

MAXINE D. — NORDHAVN



Судостроитель: NORDHAVN

Год постройки: 2001

Модель: Траулер

Цена: **ЦЕНА ЯХТЫ ПО ЗАПРОСУ**

Местонахождение: United States

Длина общая: 35' 4" (10.77m)

Ширина: 13' 2" (4.01m)

Макс. осадка: 3' 9" (1.14m)

Крейс. скорость: 6 Kts. (7 MPH)

Макс. скорость: 11 Kts. (13 MPH)

Купить **Maxine D. — NORDHAVN** а также выбрать подходящую вам яхту из нашего каталога яхт вам поможет опытный яхтенный брокер Андрей Шестаков. На сегодняшний день компания **Shestakov Yacht Sales Inc.** имеет большое количество яхт в собственном списке продаж, а также тесно сотрудничает со всеми крупными яхтенными производителями по всему миру.

Для того чтобы купить яхту **Maxine D. — NORDHAVN** а также проконсультироваться по любому вопросу связанному с покупкой, продажей, чартером яхт позвоните по телефону **+7(918)465-66-44**.

ОГЛАВЛЕНИЕ

ОГЛАВЛЕНИЕ	2
ХАРАКТЕРИСТИКИ	5
Обзор	5
Основная информация	5
Размеры	6
Скорость, вместимость и масса	6
Размещение	6
Корпус и палуба	6
Информация о двигателе	6
ПОДРОБНОЕ ОПИСАНИЕ	7
ACCOMMODATIONS & LAYOUT	7
MACHINERY, ENGINE, FUEL SYSTEM AND ENGINE ROOM EQUIPMENT	8
ELECTRICAL SYSTEM	9
PLUMBING, GALLEY AND HEAD EQUIPMENT	9
ELECTRONICS AT HELM STATION	10
DECK & HULL EQUIPMENT	11
OTHER FEATURES	12
RECENT UPGRADES AND IMPROVEMENTS	13
EXCLUSIONS	13
Disclaimer	13
Исключения	14
Отказ от ответственности	14
ФОТОГРАФИИ	15
Portside Bow	15
Underway	15
Pilothouse Exterior	15
Starboard Profile	15
Pilothouse Exterior	16

Pilothouse Exterior	16
Walkaround	16
Searchlight	16
Windlass	17
Deck	17
Exterior Hull	17
Deck	17
Salon	17
Salon	17
Salon	18
Salon	18
Salon	18
Salon	18
Salon	18
Salon	18
Salon	18
Salon	18
Galley	19
Galley	19
Galley	19
Galley	20
Head	20
Head	20
Head	21
Standup Shower	21
Stateroom	21
Stateroom	21
Stateroom	21
Stateroom	21
Stateroom	22
Stateroom	22

Electrical Panel	22
Navigation Equipment	23
Navigation Equipment	23
Navigation Equipment	23
Navigation Equipment	23
Navigation Equipment	23
Navigation Equipment	24
Navigation Equipment	24
Navigation Equipment	24
Navigation Equipment	24
Navigation Equipment	24
Engine Room	24
Engine Room	24
Engine Room	25
Engine Room	25
Engine Room	25
Engine Room	25
Engine Room	25
Engine Room	25
Engine Room	25
Engine Room	26
Engine Room	26
КОНТАКТЫ	27
Контактная информация	27
Телефоны	27
Время работы	27
Адрес	27

ХАРАКТЕРИСТИКИ

Обзор

Maxine D. was built and equipped for extended cruising for two. Her original owner kept her in a boat house in Portland, OR (on fresh water) for seven years and the second owner bought her and took her up to BC, Canada. Her current (third owner) purchased her in April, 2015, imported her back into the US and took on a few projects (like adding a watermaker) before deciding that he really wanted to have a sailboat and so she is listed for sale and back on the market after a very brief tenure, essentially making her a much easier boat for a US citizen to buy since duty has been paid and she is located in Washington now.

As hull number seven this boat took advantage of the little details and upgrades that were learned from the boats that preceded her. There is a list of over 100 improvements that were incorporated into production starting with hull 7.

Current on all engine oil and zinc changes, she is in excellent condition due to light use and diligent care. Her Yanmar 350 hp main engine has been properly broken in and ready for hundreds of adventures ahead. **Maxine D.** has been run almost exclusively in “displacement mode” rarely ever running over 8 knots or 2200 rpm. Loaded and running at wide-open throttle, 3300 rpm, she will achieve 11 knots, but her true groove is at slower speeds.

Maxine D. is an exceptional boat and an outstanding value. Her original owners made many requests during the build (including a shorter mast height to fit into the boat house) and were generous in her outfitting and care. She now awaits her next owners who want to safely and comfortably travel to remote coastal cruising grounds.

Основная информация

Тип судна: Траулер

Подкатегория: Raised Pilothouse

Модельный год: 2001

Год постройки: 2001

Страна: United States

Кубрик: Да

Размеры

Длина общая: 35' 4" (10.77m)

Длина по ватерлинии: 33' 4" (10.16m)

Ширина: 13' 2" (4.01m)

Макс. осадка: 3' 9" (1.14m)

Трапы: 19' 6" (5.94m)

Скорость, вместимость и масса

Крейс. скорость: 6 Kts. (7 MPH)

Дальность на крейсерской скорости:
400

Макс. скорость: 11 Kts. (13 MPH)

Дальность на макс. скорости: 2000 Kts.

Водоизмещение: 24000 Pounds

Вместимость воды: 165 Gallons

Вместимость сточного бака: 40 Gallons

Объем топливного бака: 590 Gallons

Размещение

Всего кают: 1

Всего ком. состава: 1

Корпус и палуба

Материал корпуса: Fiberglass

Цвет корпуса: Gray with Blue Boot Top
Stripe and Red Bottom Paint

Дизайнер корпуса: Jeff Leishman

Информация о двигателе

Двигатели: 1

Производитель: Yanmar

Модель: 6LYM-STE Turbo

Тип двигателя: Inboard

Тип топлива: Diesel

ПОДРОБНОЕ ОПИСАНИЕ

ACCOMMODATIONS & LAYOUT

The Nordhavn 35 is an ideal luxury trawler designed to be the perfect two-person yacht. Every feature was selected keeping in mind what is best for a couple. **Maxine D.** is easily single-handed (bow and stern thruster) and offers a convertible dinette bed for occasional overnight guests.

As you walk up to the 35 you will notice the pilothouse is aft with the mast placed just forward of the windscreen and dinghy rails mounted on the boat deck with a custom davit on the transom (note: dinghy is not included in sale). The cockpit is completely covered by the boat deck overhang and you can move along both sides of the pilothouse side decks up to the foredeck. There is a molded in swim platform with swim ladder and two cockpit doors, one aft and one to starboard.

Entering from the cockpit into the salon/pilothouse you pass through a commercial strength Diamond Sea/Glaze Dutch door. You will be enchanted by the exquisite teak joinery.

Maxine D. as an L-shaped dinette with fixed teak table to port and a settee to starboard with helm bench and helm controls forward. The helm station is an impressive console with the navigation communications electronics installed in a logical and easy to use and see fashion. The electrical panel includes easy to read digital meters. The single lever engine control makes traveling underway and maneuvering in close quarters a breeze; especially since the bow and stern thruster joysticks are on the same surface.

A hidden bookcase aft and to starboard in the pilothouse has a solid teak cover, which hinges down to provide a stand up chart table for paper chart navigation underway. The visibility in the pilothouse is exceptional.

Proceeding forward down four steps to the lower level you arrive first at the U-shaped galley to port. Directly opposite is the enclosed head with separate shower stall. All the way forward is the expansive master stateroom featuring a huge athwartship bed with access to and from on three sides and a wide reading seat forward. A separate chain locker with shelf lies below the anchor well and is accessed from the forward center locker master stateroom.

The interior features excellent lighting through out. There are hatches and windows in addition to foredeck dorades for superior ventilation. The amount of storage in lockers and drawers throughout has been described as “exceptional” by more than one Nordhavn 35 owner. You will be impressed with the richly varnished teak joinery, complimented in many areas by white laminate.

The engine room is located below the pilothouse level through a windowed door below the laundry machine locker in the galley. Most service and maintenance items are accessed from the easily transited starboard side, and you can crawl around to the port side of the engine too by

going around from behind. The pilothouse sole also has a huge hatch, which lifts up for impressive access.

Outside and aft is a huge cockpit with full-length overhang to keep you out of the weather. There is a molded in swim platform and ladder aft. Beneath the cockpit is a spacious lazarette. The pilothouse has walking side decks on both sides secured with 1.25" stainless steel rails. The anchor well forward is set up for two anchors with dual rollers and a secondary deck pipe (the divided chain locker is set up with a second rode ready to go). The boat deck above the pilothouse is accessed by climbing up the mast and is the perfect place for tender storage while traveling – your dinghy can rest easily on the custom cockpit davits for short jaunts. The mast was ordered about shorter than standard to allow her to more easily fit into the original owner's boat house. The mast includes a radar arch and an assortment of antennas installed up top, VHF and GPS. The boom has two winches and pivots on the gooseneck to serve as a great way to launch and retrieve the dinghy when stored on deck. The mast is also designed to hinge forward for short bridges and to facilitate long distance overland travel on a trailer.

On deck the anchor well forward contains foot controls for the Muir windlass and there is a seawater deck wash to keep the chain clean as it rides up from the bottom. The boat deck is accessed by climbing up the folding steps on the mast.

All of the stainless railing is 1.25" beautifully welded and polished. The only exterior woodwork is a richly varnished caprail above the transom. Back aft in the cockpit you have access to the lazarette through a huge hatch. Inside the lazarette is the inverter, the hydraulic steering and autopilot gear, stern thruster with separate batteries and charger, the hot water heater and house batteries. There is even a built in storage shelf for cleaning products, oil, etc. **Maxine D.** has the propane stove and two 10 gallon propane tanks are secure in the small cockpit sole locker. A fresh water spigot is located aft in the port cockpit locker.

MACHINERY, ENGINE, FUEL SYSTEM AND ENGINE ROOM EQUIPMENT

1. **Yanmar** 6LYM- STE turbo 350 HP Diesel
2. **Twin Disc** MG 5055A transmission – 2.08:1
3. **Aquatech 22** stainless steel propeller shaft
4. **PYI-PSS** drip less shaft seal
5. 5 blade bronze propeller
6. **Spurs** line cutter

7. Wet exhaust with silicon high temperature exhaust hose to muffler
8. Dual **Racor** filters with gravity fed fuel system
9. Vacuum gauges on main engine **Racors**
10. **Floscan** fuel system with polishing and timer
11. **Panda** 8 kW Generator
12. **Hynautic** Hydraulic steering with bypass and separate emergency tiller
13. **Side Power** 12V bow thruster – electric
14. **Exturn** 24V stern thruster - electric
15. Spare parts for engine and generator
16. Fuel tanks have sight glasses for level inspection
17. **Fireboy** fire suppression system (installed in engine room) with FE-241

ELECTRICAL SYSTEM

1. 8.0 kW **Panda** generator in sound enclosure (180 hours)
2. **Heart** 2500 watt inverter with built in charger
3. **Xantrex** Link 2000 battery monitoring system
4. (3) 8D AGM **Lifeline** house batteries
5. (1) 8D AGM **Lifeline** engine start battery (new March, 2015)
6. (1) 4D AGM **Lifeline** generator start battery (new March, 2015)
7. (2) Group 31 **Odyssey** AGM batteries with separate **Sleipner** charger for 24V stern thruster
8. 30 amp shore power inlet
9. 50' 30 amp shore power cords
10. Some lights upgraded to LED

PLUMBING, GALLEY AND HEAD EQUIPMENT

1. **Princess** propane three burner stove and oven
2. **NovaKool** stand up combination refrigerator and freezer
3. **Broan** trash compactor
4. **GE** Spacesaver II microwave oven
5. **Seagull IV** water purifier tap at galley
6. **Jabsco** Quiet Flush electric fresh water head – y-valve to OB or tank
7. **Sea Land** odor free hose used in holding tank system (new March, 2015)
8. **Whale** plumbing hose and fittings
9. **Jabsco** electric and **Edson** manual bilge pumps
10. **Seaward** 11 gallon hot water heater in lazarette
11. Dual basin stainless steel sink in galley
12. Soap dispensers – galley and head
13. Single lever faucets at head and galley, single lever mixer in shower
14. Plumbed for cockpit shower
15. **Whale** Gulper shower drain pump
16. Sea water wash down on foredeck
17. **Splendide** 2000 Comb-o-matic clothes washer and dryer
18. **Spectra** Ventura 200T 12V watermaker installed in master stateroom forward seat (new June, 2015)

ELECTRONICS AT HELM STATION

1. **Simrad / Robertson** AP-22 autopilot with rate compass and rudder angle indicator.
2. **Raytheon** RL 80C CRT monitor for open array radar
3. **Raytheon** C80 MFD chart plotter

4. **Raytheon** ST 60 depth
5. **Raytheon** ST 60 analog wind display
6. **Autohelm** Bi Data – depth and speed
7. **Raytheon** 300 GPS
8. **Garmin** 152 GPS receiver
9. **Horizon Spectrum** VHF radio with **Shakespeare** antenna and hailer
10. **TFT** color video monitor for **Garmin** CCTV camera mounted on aft deck
11. **Sidepower** dual thruster jog levers plus remote control with neck lanyard
12. **ACR** spotlight with touch pad at helm
13. **Floscan** fuel system with display
14. **Sony** AM FM CD (6 disc) stereo with speakers in stateroom and pilothouse
15. **Marinco** electric air horn
16. Two electric windshield wipers on starboard windscreens
17. **Ritchie** compass with Nordhavn logo
18. Red overhead light
19. Teak binocular rack
20. 12V outlets

DECK & HULL EQUIPMENT

1. Two tone deck colors, gray and white with molded in nonskid
2. LP painted **Forespar** mast and boom with forward tending struts. Includes hinge plate at mast base and radar bracket stand. Short rig for boat house.
3. **Rule** 12V electric reversing boom winches
4. **Muir** VRC 2500-A Atlantic electric reversing windlass (including manual override feature) with foredeck foot buttons and pilothouse toggle controls
5. 400 feet 5/16” high test chain

6. 60 lb. **Nordhavn** polished Stainless Steel plow anchor
7. Anchor swivel
8. Secondary rode deck pipe and divided chain locker
9. Stainless steel breast plate on bow and stem splash guard
10. Stainless steel custom fabricated dinghy deck chock mounts
11. Fresh water spigot in cockpit
12. **St. Croix** stainless steel dinghy davit lift system
13. **Scotty** down rigger mount
14. Wood slat deck (removable) at base of mast
15. **Rapala** rod holder racks in cockpit overhead
16. US ensign installed on custom varnished teak staff on caprail.
17. Coast Guard Safety equipment including: fire extinguishers, life jackets, discharge plaques, horn, bell, dock lines and fenders

OTHER FEATURES

1. **Cruisair** air conditioning
2. 18" **Toshiba** flat screen television in saloon – forward
3. Weems & Plath - clock and barometer
4. Teak and spruce soles in pilot house and master stateroom
5. **Lonseal** vinyl in galley and head soles
6. **Corian** countertops in galley and head
7. Dovetail drawers – lots of storage in lockers and drawers
8. Edge bound carpeting in saloon and stateroom
9. White mesh **Textilene** see through window coverings on pilot house windows
10. Canvas covers for windlass, hatches and boom winches

11. Canvas sun shade cover for aft cockpit
12. Canvas for hatches, windlass and boom winches
13. Custom window blinds
14. Engine room door has viewing port
15. Light brown leather upholstery with blue piping
16. Hella turbo fans
17. Exterior courtesy lights
18. Interior courtesy lights
19. **Lewmar** hatch in pilothouse

RECENT UPGRADES AND IMPROVEMENTS

1. Bottom paint done in March, 2015
2. Sanitation hose replaced in March, 2015
3. Main engine & generator start batteries replaced w/ Lifeline AGM March, 2015
4. Spectra watermaker installed in June, 2015

EXCLUSIONS

Potential purchasers should assume that items on the vessel at the time of viewing, but not specifically listed on this sheet, are not included with the sale of the yacht. These specifications are believed to be true and correct, but cannot be guaranteed. Items excluded include, but are not limited to –artwork and dinghy. All owners' personal effects and clothing will be removed prior to closing.

Disclaimer

Specifications and details of this vessel are provided in good faith for informational purposes only. Details regarding the specifications, operating characteristics and condition of the vessel have been obtained from sources believed reliable, but the owner and brokers cannot guarantee or warrant the accuracy of this information or the condition of the vessel. Buyer assumes

responsibility to verify all speeds, capacities, consumptions and other measurements contained herein and otherwise provided and agrees to instruct his/her agent or surveyor to confirm such details prior to purchase. Vessel is offered subject to prior sale, price and inventory changes and withdrawal from market without notice.

Исключения

При продаже яхты исключаются личные вещи владельца.

Отказ от ответственности

Компания предоставляет описание судна или яхты добросовестно, но не может гарантировать точность этой информации, а также не ручается за техническое состояние. Покупатель должен проинструктировать своих агентов или оценщиков исследовать представленную информацию более подробно, по собственному желанию. Продажа судна или яхты, изменение цены или снятие с продажи будет происходить без предварительного уведомления.

ФОТОГРАФИИ

Underway



Portside Bow



Starboard Profile



Pilothouse Exterior



Pilothouse Exterior



Pilothouse Exterior



Walkaround



Searchlight



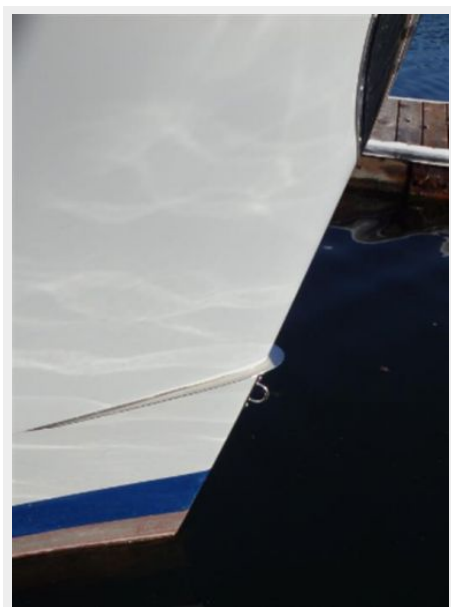
Windlass



Deck



Exterior Hull



Deck



Salon



Salon



Salon



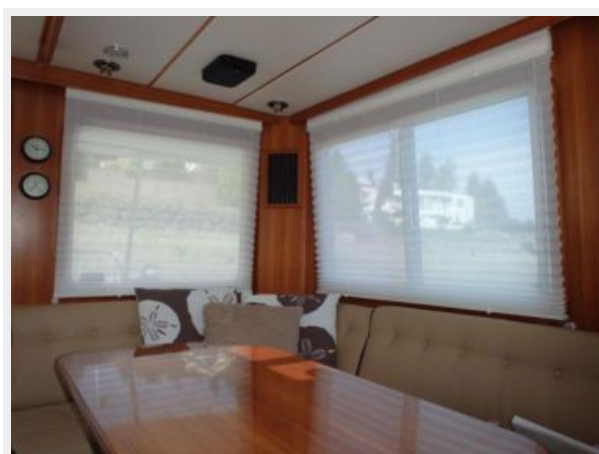
Salon



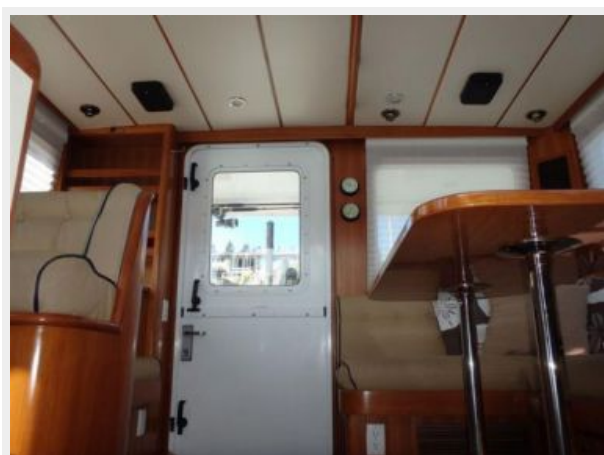
Salon



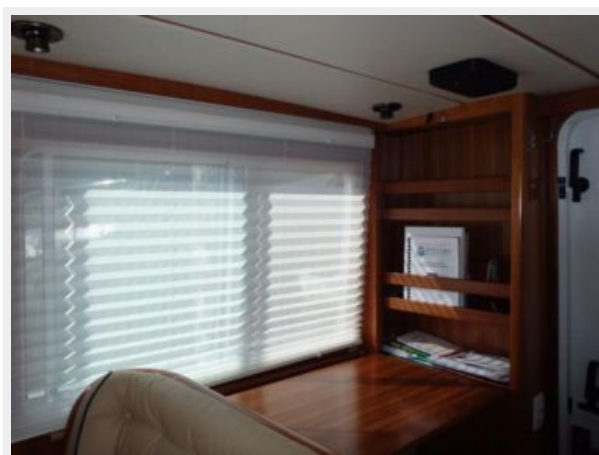
Salon

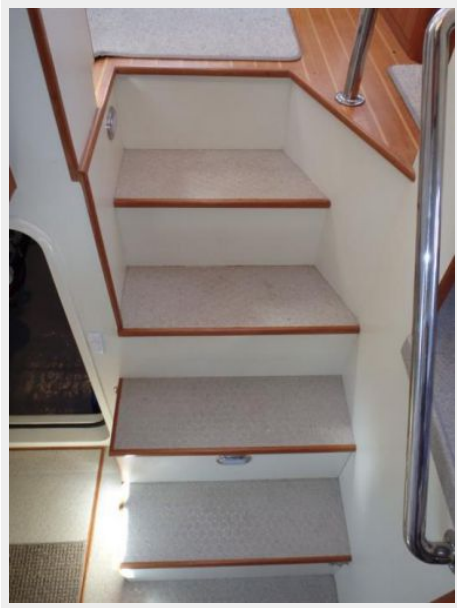


Salon



Salon





Galley



Galley



Galley



Galley

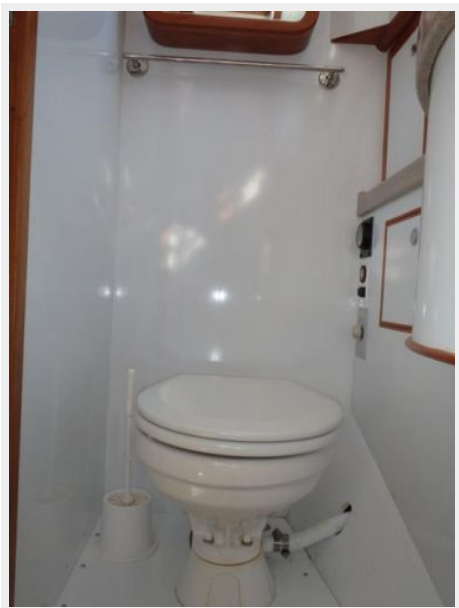


Head

Head



Head



Standup Shower



Stateroom



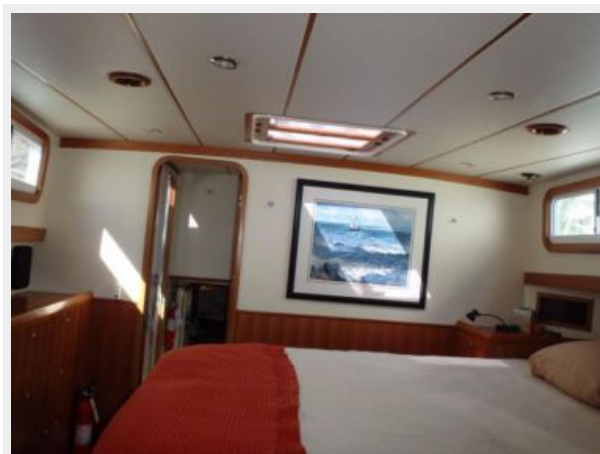
Stateroom



Stateroom



Stateroom



Stateroom



Stateroom



Electrical Panel





Navigation Equipment



Navigation Equipment

Navigation Equipment



Navigation Equipment



Navigation Equipment



Navigation Equipment



Navigation Equipment



Navigation Equipment



Navigation Equipment



Engine Room



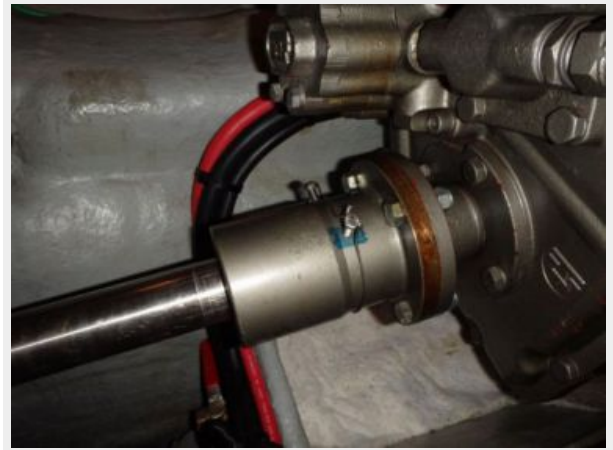
Engine Room



Engine Room



Engine Room



Engine Room



Engine Room



Engine Room



Engine Room



Engine Room



Engine Room



КОНТАКТЫ

Андрей Шестаков (Andrey Shestakov) – ведущий яхтенный брокер отдела продаж яхт и судов компании Shestakov Yacht Sales Inc. Официальный представитель Shestakov Yacht Sales Inc. для русскоговорящих клиентов в центральном офисе компании в Майами/Форт Лодердейл/Флорида/США.

Контактная информация

Email: andrey@shestakovyachtsales.com

Web: shestakovyachtsales.com

Телефоны

Краснодарский край: **+7(918)465-66-44**

США, Майами, Флорида: **+1(954)274-4435**

Время работы

Понедельник – Суббота: **9:00 - 21:00**
EDT

Воскресенье: **Закрито**

Адрес



Harbour Towne Marina, 850 NE 3rd St,
STE 213, Dania, FL 33004