

BLACK DOUGLAS — CUSTOM



Судостроитель: CUSTOM

Год постройки: 2000

Модель: Экспедиционная яхта

Цена: ЦЕНА ЯХТЫ ПО ЗАПРОСУ

Местонахождение: United States

Длина общая: 94' 0" (28.65m)

Ширина: 23' 6" (7.16m)

Мин. осадка: 6' 6" (1.98m)

Крейс. скорость: 11 Kts. (13 MPH)

Макс. скорость: 12 Kts. (14 MPH)

Купить **Black Douglas — CUSTOM** а также выбрать подходящую вам яхту из нашего каталога яхт вам поможет опытный яхтенный брокер Андрей Шестаков. На сегодняшний день компания **Shestakov Yacht Sales Inc.** имеет большое количество яхт в собственном списке продаж, а также тесно сотрудничает со всеми крупными яхтенными производителями по всему миру.

Для того чтобы купить яхту **Black Douglas — CUSTOM** а также проконсультироваться по любому вопросу связанному с покупкой, продажей, чартером яхт позвоните по телефону **+7(918)465-66-44**.

ОГЛАВЛЕНИЕ

| | |
|-------------------------------|----|
| ОГЛАВЛЕНИЕ | 2 |
| ХАРАКТЕРИСТИКИ | 5 |
| Основная информация | 5 |
| Размеры | 5 |
| Скорость, вместимость и масса | 5 |
| Размещение | 5 |
| Корпус и палуба | 6 |
| Информация о двигателе | 6 |
| ПОДРОБНОЕ ОПИСАНИЕ | 7 |
| Black Douglas | 7 |
| Walk Through Interior | 7 |
| Decks | 9 |
| Tower & Stacks | 9 |
| Boat Deck | 9 |
| Garage / Machinery Room | 10 |
| Engine Room | 10 |
| Fishing Deck / Swim Platform | 11 |
| Propulsion | 11 |
| Electrical | 12 |
| Pilot House / Navigation | 12 |
| Flybridge Station | 13 |
| Deck Equipment | 13 |
| Исключения | 13 |
| Отказ от ответственности | 14 |
| ФОТОГРАФИИ | 15 |
| Salon | 15 |
| Profile | 15 |
| Salon | 15 |

| | |
|--------------------------------|----|
| Salon | 15 |
| Salon Steps | 15 |
| Salon Aft | 15 |
| Galley | 16 |
| Galley | 16 |
| Master Stateroom | 16 |
| Master Stateroom Aft | 16 |
| Guest Stateroom | 17 |
| Guest Stateroom | 17 |
| Pilothouse | 17 |
| Pilothouse | 17 |
| Pilothouse | 17 |
| Bridge Aft | 17 |
| Bridge Forward | 18 |
| Foredeck | 18 |
| Side Deck | 18 |
| Engine Room Aft | 18 |
| Engine Room Forward | 18 |
| Engine Room Forward | 18 |
| Engine Room Port Controls | 19 |
| Engine Room Port | 19 |
| Engine Room Starboard Controls | 19 |
| Genset | 19 |
| Genset | 20 |
| Genset | 20 |
| Machine Room Electric | 20 |
| Profile | 20 |
| Side Profile | 20 |
| Side Profile | 20 |

| | |
|-----------------------|----|
| Side profile | 21 |
| Side Profile | 21 |
| Profile | 21 |
| Protective Skegs | 21 |
| Protective Skegs | 21 |
| КОНТАКТЫ | 22 |
| Контактная информация | 22 |
| Телефоны | 22 |
| Время работы | 22 |
| Адрес | 22 |

ХАРАКТЕРИСТИКИ

Основная информация

Тип судна: Экспедиционная яхта **Модельный год:** 2000
Год постройки: 2000 **Страна:** United States
Регистрационный номер: TY1001328000 **Верх:** Hardtop
Открытая палуба мостика: Да

Размеры

Длина общая: 94' 0" (28.65m) **Ширина:** 23' 6" (7.16m)
Мин. осадка: 6' 6" (1.98m)

Скорость, вместимость и масса

Крейс. скорость: 11 Kts. (13 MPH) **Макс. скорость:** 12 Kts. (14 MPH)
Макс. скорость поворота: 1800 Kts. **Вместимость воды:** 1000 Gallons
Вместимость сточного бака: 300 Gallons **Объем топливного бака:** 6200 Gallons

Размещение

Всего кают: 3 **Всего коек:** 5
Спальные места: 6 **Всего ком. состава:** 3
Каюты экипажа: 1 **Койки экипажа:** 4
Спальных мест экипажа: 2 **Комм. состав экипажа:** 1

Корпус и палуба

Материал корпуса: Steel

Дизайнер корпуса: Charles Neville Associates

Информация о двигателе

Двигатели: 2

Производитель: Luggier

Модель: Luggier 6140

Тип двигателя: Inboard

Тип топлива: Diesel

ПОДРОБНОЕ ОПИСАНИЕ

Black Douglas

Go anywhere you want, take as many or as few as you please, stay as long as you like.

***** Note: 9/15: Black Douglas has just returned from the yard with Fresh Paint and a Fresh Bottom. All 5 AC/Chillers are being replaced. Her 23 foot Custom Willinhoff aluminium Fishing Tender has just been painted. Her condition is Excellent in every way and will be kept as always until she sells.***

Black Douglas is the creation of a lifetime yachtsman. Designed by Naval Architect Charles Neville to take a cruising family anywhere in the world in safety and comfort, she was built of 3/8" Steel at the Treyworgy Yard in Florida and completed in 2000. She is constructed double plated and foam filled so she is very quiet and has no trapped air spaces for moisture to form oxidation. She is powered by 2 Commercial, Continuous Duty Lugger engines. She is very well executed and has been kept in top condition by a full time captain and an owner who loves her and can afford to keep her up with pride.

While her lines are commercial, she is Yacht-Faired in every detail and represents one of the most capable World Cruisers on the water. Designed with the ocean-going priorities of low A/B ratio, shallow draft, range, strength and sea-keeping abilities, she has taken into account all of the features of both Ocean Crossings and Island Living. From a livability design perspective she is laid out for large, family gathering areas, inside and out. She has a massive covered upper deck, oversize stowage and a crane for toys and tenders. Also a very large fishing/diving cockpit, marlin tower helm station, and two very large "Garage" spaces housing Fishing Tackle, Dive Compressors, Watermakers, and all the equipment befitting a globe-trotting family adventure.

Black Douglas is one of a very few World Capable Expedition Trawlers, specifically designed to be handled by a family and/or minimal crew. She would also make a very capable SuperYacht Support Vessel. She is simple and straightforward in her operation and maintenance, spacious and open in design and engineered and overbuilt like a battle ship.

Walk Through Interior

The Main Deck interior consists of an enormous Salon and dining area adjacent to a very large

Open/Country Galley. The entire space is surrounded by very large, bullet proof sea-glaze storm windows @ 1/2in thick, set in aluminium frames. The aft is an oversize 3/4 inch thick glass sliding door in a heavy steel frame. The light and view are impressive. There is a long settee and entertainment center to port and a very large, buffet style dining table to starboard. Forward and to starboard is the Galley. This is a chef's dream with tons of Corian counter space, 4 extra-large, stainless steel, commercial refrigerator/freezers and a large, commercial grade Jen Air stove top with oven and grill and a large hood/ventilator. The sheer volume of the stowage and food prep space is suitable to a boat twice her size.

Pilothouse: Forward of the Galley, up a step, is the full beam Pilothouse. In keeping with the design, the Pilothouse is straightforward, oversize and overbuilt. To Port is a navigators station with electrical panels and chart stowage. To Starboard is a large sea berth/settee. Port Fwd is the stairwell down to the crew quarters and laundry and storage rooms. Quick access to any part of the ship means Freeman Sea-Doors on each sidedeck and interior access to the Flybridge portside aft. Note that she was designed to be operated easily by two persons so movement both inside and out is a design priority.

Crew Quarters: Down from the Pilothouse is the forward crew quarters which has two V-Berth bunks and 2 Partially enclosed Sea Berths for additional crew and/or rough weather. Toshiba flatscreen in the crew quarters very large hanging lockers and lots of storage and a private head with enclosed shower. The space is again, large.

Staterooms:

Down a stairwell located portside forward off the main saloon is a landing opening to two large guest staterooms. Each are configured with twin beds with storage underneath and large hanging lockers. Each has an ensuite head and shower.

Master Stateroom is full beam and oversized with an office/study/library to one side and an entire wall of 8 huge hanging lockers on the other. On the aft wall is a large chest of drawers, all built in, and a head, shower and dressing area. The design plan called for sufficient stowage of proper clothes for all climates from the South Pacific to the Fiords of northern Europe. **Note that the current configuration of the master is two large but separate beds. The idea was to accommodate any family and guest possibilities. An oversize King would actually free up more space.

Decks

Foredeck is surrounded by safety bulwarks topped by heavy duty stainless railings. She holds two 320lb Bruce Anchors in separate hawses with each connected to 300 feet of 5/8 inch High Tensile Chain handled by Twin Key Power Hydraulic Windlasses powered by redundant Power Take Offs on each engine and controlled from the deck, Pilothouse or Bridge deck. The windlasses are topped by warping drums and lines secured by large bollards.

Flybridge: Up from the Pilothouse is a truly expansive flybridge area. All instrumentation is protected in a large, recessed electronics box which is covered by a steel plate actuated with hydraulic lifts. She has a very complete electronics and controls package and 3 Stidd helm seats. However the main focus of this deck is a family entertainment area. There are full length bench seats built in and a large, steel dinette table. Aft is a large stainless grill and enough open space for more than a dozen people to be together and enjoy the views. A large, steel hard top protects everyone from the sun. Once again, think large, this boat goes on and on.

Tower & Stacks

To the aft end of the bridge deck are the dry stacks. These incorporate a system by Soundown which both reduce exhaust noise, and burn off particulates and moisture in the gases to eliminate soot.

Between the stacks is, essentially, a Tuna Tower! The owner is an avid fisherman and recognizes that family time is about more than just safe passage. This boat is set up to play! The tower controls provide excellent visibility for spotting fish and birds. The design also includes a very large aft cockpit set up for fishing and a large landing platform, with a tackle room just off the cockpit. With full controls at the tower, she is a formidable fishing machine and many Tuna and world class Billfish have met their end in this giant cockpit.

Also to the aft of the bridgedeck is the operators station for the 6,000lb Hydraulic Crane. Tenders, motorcycles, heavy machinery or even a small car come aboard easily.

Boat Deck

Stepping down and aft from the bridge deck is the boat deck. Currently there is a 14 foot RIB with a 25hp engine and a customized 23 foot Fishing Launch stored here. This is a 23 foot Aluminum, Center Console fishing boat with a Yanmar Diesel connected to a Hamilton Jet Drive so she is shallow draft and almost as bullet-proof as the mothership. **** Note that this tender has also just come back from a sandblast and complete paint job and shows as new.**

The Boat Deck also has two Canister Life Rafts and a full sized Frigaboat Chest Refrigerator/Freezer which can be used for Bait or drinks for outside. There is plenty of room left on the boat deck for Jet Skis or other toys.

Stepping down from the boat deck you move aft to a very large cockpit with full bulkheads side and aft. Across the aft/transom bulkhead is a large Tuna Door. Located in the cockpit are large Hydraulic Warming Drums on port and starboard and large bollards for lines. Midships is an entrance to a garage storage area with power cords, lines and hydraulic equipment.

Garage / Machinery Room

To starboard on the boat deck is the entrance to a large Machinery Garage and through this area on to the engine room. The Garage houses main electrical panels, watermakers at 70gph, dive compressors and tank storage and work bench areas. There is also an impressive array of fishing tackle and dive equipment. Also two large Cosplich chest freezers, a washer/dryer, and two water heaters @ 20gal.ea.

Engine Room

Through the Garage is access via a second water-tight door, to the engine spaces. As you will have guessed by now, it is Large! The access is unmatched. The systems visible, and straightforward in design. Fuel Manifolds, large Sea Chests, Generators are all completely accessible. Power is twin Luggar Model 6140 Continuous Duty @ 600hp ea. Generators are 2 @ 40KW and 1 @ 20KW and all are Northern Lights Marine. **** 5 Brand New Marine Air AC Chillers.** There are twin Alfa Laval Fuel Centrifuge Polishers in addition to Racor 900 particulate filters for each engine and Generator, a Hankinson Air Dryer system, twin oil storage tanks at 60 gallons each, and a total fuel capacity of 6,200 Gallons in five tanks. A large Belly Tank, twin Wing Tanks, and twin Day Tanks at 500 Gallons each. **** This is one of the most well conceived and executed engine room spaces I have seen. A world class Ship in every way.**

Engine Room Equipment:

Koopnautic Stabilizers

40 HP Hydraulic Bow Thruster

5 fuel tanks – including 2 Day Tanks @ 500 gal ea.

Alfa Laval Centrifuge Fuel Polishers

Racor 900 for each engine and generator

Hankinson Air Dryer system

Delta T Blowers

5 AC Chillers by Marine Air

Twin Pacer Emergency Bilge Pumps

Twin Sea Chests

Twin Oil Storage tanks @ 60 Gal ea.

Oil Exchange system

Twin water heaters @ 20 gal ea.

Fishing Deck / Swim Platform

Stepping through the transom Tuna door is a very large fishing and diving platform. Protected by heavy, stainless railing, there is sufficient room for multiple hook-ups to be fought, or 6-8 divers to gear up. It is a great “beach” and boarding area for the tenders and gear.

Propulsion

Engine Make: 2 x Lugger 6140 Continuous Duty Rated @ 600 hp ea

Engine Hours: 5,800

Exhaust: Dry Stack with silencers by Soundown with manifolds and heating blankets for clean exhaust burn

PTO: Redundant Power Take Off hydraulics on each engine

Electrical

Shore Service: 100 amp 60hz

Generators: 2 X Northern Lights Marine Generators @ 40Kw each 1 X Northern Lights Marine Generator @ 20Kw

Inverters @ 3000 watts each

Pilot House / Navigation

2 X Nauticomp redundant systems with 2 x 15in screens.

Twin PC systems running Nobletec

Garmin 4212

Autocom Autopilot

Bow Thruster Control

Windlass Controls

Stidd Helm

Speich Window Circle Clear port

ICOM 602 VHF

ICOM M700 SSB

Furuno 72 Mi RADAR – Open Array

Furuno 64 Mi RADAR – Open Array

EPIRBs

Sony Entertainment System throughout

Flybridge Station

3 x Stidd Helm Seats

Covered Electronics box with hydraulic cover

Twin Garmin 4212

Furuno 64 mi RADAR

Comnav Autopilot

ICOM 602 VHF

Hydraulic Thruster Controls

Deck Equipment

Foredeck:

Twin Key Power Hydraulic Windlass

Twin Key Power Hydraulic Warping Drums

Twin Bruce Anchors @ 320 lbs in twin rollers

300 feet each of 5/8 High Tensile chain

Large Anchor Bollards

Boat Deck:

5,000 lb Hydraulic Crane

2 x Canister Liferaft 6 persons ea.

2 x Hydraulic Warping Drums

Tenders: 14 ft. RIB w/ 25HP, 23 Foot Willinhoff Aluminium Center Console Diesel Jet Drive fishing/tender

Исключения

При продаже яхты исключаются личные вещи владельца.

Отказ от ответственности

Компания предоставляет описание судна или яхты добросовестно, но не может гарантировать точность этой информации, а также не ручается за техническое состояние. Покупатель должен проинструктировать своих агентов или оценщиков исследовать представленную информацию более подробно, по собственному желанию. Продажа судна или яхты, изменение цены или снятие с продажи будет происходить без предварительного уведомления.

ФОТОГРАФИИ

Profile



Salon



Salon



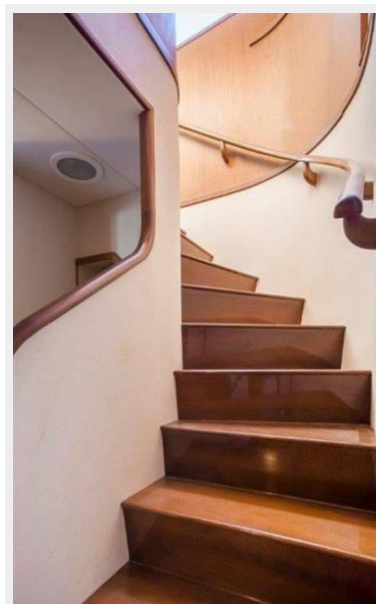
Salon



Salon Aft



Salon Steps



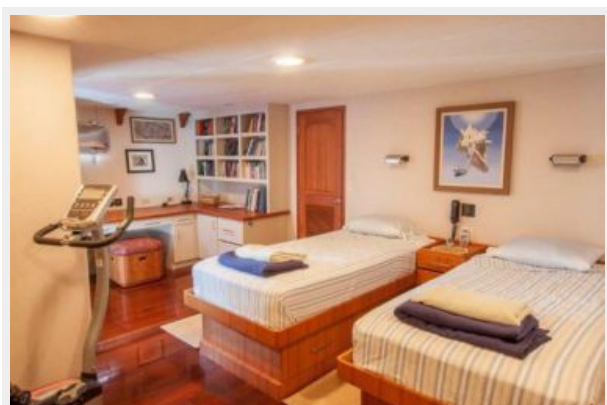
Galley



Galley



Master Stateroom



Master Stateroom Aft



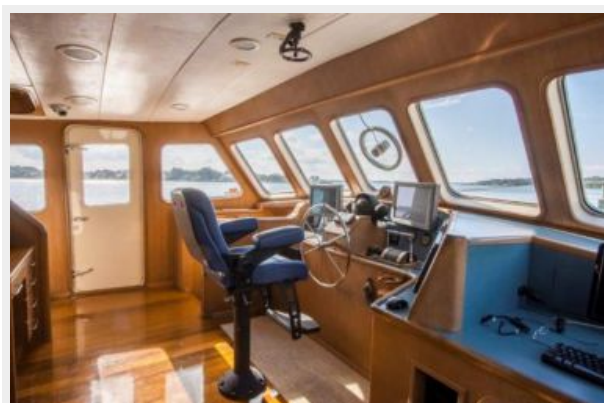
Guest Stateroom



Guest Stateroom



Pilothouse



Pilothouse



Pilothouse



Bridge Aft



Bridge Forward



Foredeck



Side Deck



Engine Room Aft



Engine Room Forward



Engine Room Forward



Engine Room Port Controls



Engine Room Port



Engine Room Starboard Controls



Genset



Genset



Genset



Machine Room Electric



Profile



Side Profile



Side Profile



Side profile



Side Profile



Profile



Protective Skegs



Protective Skegs



КОНТАКТЫ

Андрей Шестаков (Andrey Shestakov) – ведущий яхтенный брокер отдела продаж яхт и судов компании Shestakov Yacht Sales Inc. Официальный представитель Shestakov Yacht Sales Inc. для русскоговорящих клиентов в центральном офисе компании в Майами/Форт Лодердейл/Флорида/США.

Контактная информация

Email: **andrey@shestakovyachtsales.com**

Web: shestakovyachtsales.com

Телефоны

Краснодарский край: **+7(918)465-66-44**

США, Майами, Флорида: **+1(954)274-4435**

Время работы

Понедельник – Суббота: **9:00 - 21:00**
EDT

Воскресенье: **Закрето**

Адрес



Harbour Towne Marina, 850 NE 3rd St,
STE 213, Dania, FL 33004