

ZEELANDER Z68 — ZEELANDER YACHTS



Судостроитель: [Zeelander Yachts](#)

Год постройки: 2014

Модель: Моторная яхта

Цена: ЦЕНА ЯХТЫ ПО ЗАПРОСУ

Местонахождение: United States

Длина общая: 68' 0" (20.73m)

Ширина: 19' 7" (5.97m)

Макс. осадка: 5' 6" (1.68m)

Купить ZEELANDER Z68 — Zeelander Yachts а также выбрать подходящую вам яхту из нашего каталога яхт вам поможет опытный яхтенный брокер Андрей Шестаков. На сегодняшний день компания Shestakov Yacht Sales Inc. имеет большое количество яхт в собственном списке продаж, а также тесно сотрудничает со всеми крупными яхтенными производителями по всему миру.

Для того чтобы купить яхту ZEELANDER Z68 — Zeelander Yachts а также проконсультироваться по любому вопросу связанному с покупкой, продажей, чартером яхт позвоните по телефону **+7(918)465-66-44**.

ОГЛАВЛЕНИЕ

ОГЛАВЛЕНИЕ	2
ХАРАКТЕРИСТИКИ	4
Обзор	4
Основная информация	4
Размеры	4
Скорость, вместимость и масса	4
Размещение	4
Корпус и палуба	5
Информация о двигателе	5
ПОДРОБНОЕ ОПИСАНИЕ	6
Vessel Walkthrough/ Features	6
Hull	7
Superstructure	7
Deck Equipment	7
Fly Bridge	8
Platform & Garage	9
Wheelhouse/ Salon	9
Master Stateroom and Head	10
Galley	11
Day Head	11
VIP Stateroom and Head	11
Guest Staterooms	12
Engine Room & Technical Equipment	12
Safety Equipment	13
Исключения	14
Отказ от ответственности	14
ФОТОГРАФИИ	15
Aft View	15

Aft w/ Swim Platform	15
Tender / Jet-ski	15
Bow	15
Hatch	16
Aft Seating	16
Salon	16
Dining	16
Staircase to Staterooms	17
Master	17
Head	17
Head	17
Helm	17
Engine Room	17
Engine Room	18
КОНТАКТЫ	19
Контактная информация	19
Телефоны	19
Время работы	19
Адрес	19

ХАРАКТЕРИСТИКИ

Обзор

The Z68 embodies the complete ethos of Zeelander Yachts. In terms of innovative design, cutting-edge technology, unsurpassed quality and exquisite finishing, the Z68 is a class leader in the fly bridge sports cruiser line.

The elegant Z68 is offered with an array of customizing options for new owners who wish to individualize their yacht without compromising on quality.

Основная информация

Тип судна: Моторная яхта

Модельный год: 2014

Год постройки: 2014

Страна: United States

Размеры

Длина общая: 68' 0" (20.73m)

Ширина: 19' 7" (5.97m)

Макс. осадка: 5' 6" (1.68m)

Длина привального бруса: 68' 0" (20.73m)

Скорость, вместимость и масса

Водоизмещение: 125400 Pounds

Вместимость воды: 600 Gallons

Объем топливного бака: 1850 Gallons

Размещение

Всего кают: 4

Всего ком. состава: 3

Корпус и палуба

Материал корпуса: Aluminum

Информация о двигателе

Двигатели: 2

Производитель: MTU

Модель: 8V2000M93

Тип двигателя: Inboard

Тип топлива: Diesel

ПОДРОБНОЕ ОПИСАНИЕ

Vessel Walkthrough/ Features

- All decks, steps, bathing platform and cockpit with composite teak
- Flagpole w/ flag
- Oval railing
- Sundeck w/ lounge cushions
- Inside seating area for 10 persons w/ table
- Wet bar w/ refrigerator, sink, hot/cold water
- Covered seating area on aft deck
- Flat screen with surround system DVD, TV connection on electric lift
- Opening tender garage on foredeck
- Dashboard with Free Technics/Simrad navigation and monitoring equipment
- Joystick control for bow & stern thruster (FB & WH)
- Radar, chart plotter and GPS navigator (FB & WH)
- Engine monitoring (FB & WH)
- Autopilot w/ remote control (FB & WH)
- Engine monitoring (FB & WH)
- Autopilot w/ remote control (FB & WH)
- Air conditioning/heating in all accommodation areas
- Electronic speed log, depth sounder and VHF (FB & WH)
- Electric /hydraulic steering (FB & WH)
- 2xMTU lever controls (FB & WH)
- Engine start/stop buttons (FB & WH)
- Koopnautic stabilizer system
- Underwater lights
- Full option/fully equipped galley (dishwasher, microwave, cooker, instant hot water, extractor, etc)
- Refrigerator
- Custom built freezer
- Superyacht port lights (master, VIP, Guest)
- Queen beds
- Deck hatch/ventilation
- Air conditioning/chiller system w/ fan coils
- Automatically controlled heating system in each cabin
- Sauna/steam cabin in guest rooms
- Muir anchor winch w/ 70 m galvanized steel chain and polished 50 kg anchor
- Muir capstans on aft deck
- Automatic bilge pumps
- Power management system
- Traction batteries for extended operation w/out generator
- Extra quiet sound insulation

- Antifouling
- Metallic paint on hull superstructure
- Fin stabilizer system
- Hand hydraulic operated mast
- Zinc anode protection
- Tender garage w/ Ski Doo and Williams jet tender
- Hydraulic stern door with swimming ladder and passarelle

Hull

- Superyacht port lights (master, guest, VIP)
- Stainless steel engine room air inlet and outlet vents
- Protective underwater coating system w/ antifouling
- Paint system consisting of metallic base coat and clear paint
- Welded aluminum construction w/ frames and longitudinal stiffeners
- All tanks welded aluminum construction integrated into the hull construction
- Recessed zinc anodes for corrosion protection
- Welded aluminum propeller shaft tubes w/ protection skegs
- Welded keel w/ skeg for directional stability
- Welded bow thruster tunnel
- Welded stern thruster tunnel
- Underwater lights

Superstructure

- Paint system consisting of metallic base coat and clear paint
- Welded construction w/ frames and longitudinal stiffeners
- Welded seating area w/ hatches in seat bottoms
- Welded stairway to flybridge
- Welded aluminum folding mast
- Welded aluminum steering console
- All glass is double laminated and glued into the superstructure
- Mahogany window surround trim w/ stainless steel finishing rings
- Main deck full width aluminum construction
- Air operated pantograph side door w/ air seal

Deck Equipment

- All decks, steps, bathing platform and cockpit in composite teak
- Flagpole w/ flag
- Oval railing

- Mahogany capping rail
- Polished stainless steel rubbing strip
- Polished stainless steel bollards
- Bow sundeck including lounge cushions
- Muir anchor windlass w/ 70 meter galvanized chain and polished 70 kg anchor
- Muir capstan on aft deck
- Mooring lines and fenders
- Polished stainless steel fairleads
- Polished stainless steel bow roller w/ anchor stop
- Polished stainless steel bow plate
- Chain locker & fender stowage
- (4) windscreen wipers and washers
- Deck wash outlet
- Deck drain scuppers
- Escape hatch master cabin
- Escape hatch VIP cabin
- Side deck storage locker w/ fuel fill water fill and waste discharge connection
- Aft deck seating area w/ storage hatches under the cushions
- Teak adjustable and sliding table
- Cockpit and deck lighting
- Covers for all outside furniture
- Bulwark doors
- Aft seating area doors

Fly Bridge

- All decks in composite teak
- Steering console with Free Technics monitoring equipment
- Radar
- Chart plotter
- GPS navigator
- Engine monitoring
- Generator monitoring
- Bilge pump operation
- Autopilot control
- Electronic speed log, depth sounder
- Environmental information
- Compass
- Centralfi alarm system
- Simrad VHF radio
- Bow and stern thruster joystick control
- Hydraulic power steering helm
- MTU rpm and clutch control

- Leather pilot seat two seater
- Wrap around seating area with storage hatches under cushions
- Teak adjustable tables
- Wet bar w/ refrigerator and sink with hot and cold water
- Manual hydraulic operated folding arch type radar mast
- Wrap around windscreen with stainless steel railing
- air horn
- LED navigation lights
- Radar scanner unit
-

Platform & Garage

- Remote controlled hatch on foredeck
- Williams tender w/ diesel water jet
- Sea Doo RXT water craft
- Hydraulic tender crane
- Stainless steel ladder for tender access after launching
- Remote controlled stern platform
- Integrated swimming ladder in platform
- Integrated passarelle with remote control in platform
- Shower connection
- TV marina connection
- Shore power connection (AC socket)
- Under water lighting

Wheelhouse/ Salon

- 10 person seating and dining area in wheelhouse
- Three piece aft door that opens up full width of salon
- Breakfast bar w/ 5 bar stools
- Large windows offering a panoramic view
- Wood and stainless steel custom steering wheel
- Helms Mans chair integrated into salon sofa (hinged back rest)
- Flat screen TV w/ DD surround system
- Television lift
- Locker with storage for wine glasses
- Wine cooler
- Dashboard w/ Free Technics monitoring equipment
- Radar
- Chart plotter
- GPS navigator

- Engine monitoring
- Generator monitoring
- Tank level monitoring
- Bilge pump operation
- Autopilot control
- electronic speed log, depth sounder
- Environmental information
- Compass
- Central fire alarm system
- Simrad VHF radio
- Windscreen wipers
- Bow & stern thruster joystick control
- Hydraulic power steering helm
- MTU rpm and clutch control
- Air conditioning fan coils for chilled water heating and cooling system
- Main engine start and stop control buttons

Master Stateroom and Head

- Built-in flat screen TV/DVD
- Double bed
- Air conditioning fan coils for chilled water heating & cooling system
- Walk in closet w/ drawers
- Lockers/ wardrobe/ storage
- Vanity/ desktop
- Alcantara ceiling and wallcovering
- Reading lights
- Escape hatch
- Fire extinguisher
- 230v power points AC
- Teak flooring

Ensuite bathroom:

- Double sink w/ hot and cold water mix tap
- Built in soap hand pump
- Cupboard space below sink & above
- Lockers w/ mirror facing
- Teak flooring
- Tecma electric toilet w/ fresh water flush
- Bath w/ thermostatic shower
- Bidet
- Ventilation

- 230v power points AC
- Port light with blind

Galley

- Dishwasher
- Microwave
- Cook top
- Instant hot water
- Refrigerator
- Custom built freezer (on lower deck)
- Washer/dryer combined unit (on lower deck)
- Extractor fan
- Cupboards and drawers
- Sink w/ hot and cold water
- Soap dispenser
- Teak flooring
- Complete dishware
- Complete cutlery set
- Nespresso coffee machine

Day Head

- Sink w/ hot and cold water tap
- Built in soap hand pump
- Cupboard space below sink and above
- Lockers w/ mirror facing
- Teak flooring
- Tecma electric toilet w/ fresh water flush
- Sauna/ steam/ shower team cabin w/ thermostat
- Ventilation
- 230v power points AC
- Port light

VIP Stateroom and Head

- Built in flat screen TV/DVD
- Double size bed
- Air conditioning fan coils for chilled water heating and coiling system
- Closet w/ drawers
- Lockers/ wardrobe/ storage

- Alcantara ceiling and wallcovering
- Reading lights
- Escape hatch
- Fire extinguisher
- 230v power points AC
- Teak flooring

Ensuite Head with:

- Double sink w/ hot & cold water
- Built in soap hand pump
- Cupboard space below sink and above
- Lockers w/ mirror facing
- Teak flooring
- Tecma electric toilet w/ fresh water flush
- Sauna/ steam/ shower team cabin w/ thermostat
- Ventilation
- 230v power points AC
- Port light w/ blind

Guest Staterooms

- Built in flat screen TV/DVD
- Double size bed
- Air conditioning fan coils for chilled water heating and cooling system
- Closet w/ drawers
- Lockers/ wardrobe/ storage
- Alcantara ceiling and wallcovering
- Reading lights
- scape hatch
- Fire extinguisher
- 230 v powerpoints AC
- Teak flooring

Engine Room & Technical Equipment

- Silent Line sound insulation bulkheads and ceiling
- Water tight entrance door
- Two diesel engines MTU 8V2000M93 1200 hp each
- Engine exhaust silencers on resilient mounts
- Water injected stainless steel exhausts
- (2) ZF 2000 reduction gearbox
- Centa link drive coupling

- Twin propeller shafts w/ shaft seal
- Twin blade propellers
- Twin balance rudders w/ tie rod
- AC hydraulic pump
- DC backup hydraulic pump
- Kohler 23 kw generator
- Kohler 9 kw generator
- Shore power cable reel
- Power management system
- Two sea water filters w/ cross over and isolation valves
- Deck wash pump w/ flush connections to grey and black water tanks
- 220 v automatic bilge pumps connected to each accommodation area
- Double Separ fuel filters with water separators
- Algea X Magnetic fuel filters
- Water separation unit
- Automatic fuel pump
- Electric operated fuel valves controlled from steering station
- Fuel hand pump
- (3) diesel storage tanks
- Diesel day tank
- Engine Room lights
- High power engine room ventilation
- Fresh water pump
- Boiler
- Ultra violet sterilizer unit
- Desalination unit
- Grey water sump tank fore and aft
- Grey water tank w/ automatic pump
- Black water tank with automatic pump and deck discharge
- Main air conditioning chilled water unit
- Diesel powered heating unit
- Engine room ventilation fans
- Bilge lights
- Compressor air system
- All interior lights are dimmable
- Optima start batteries
- (3) Mastervolt battery charger
- Service batteries 800 amp
- (3) Mastervolt inverter
- Mastervolt isolation transformer
-

Safety Equipment

- Handheld fire extinguisher in each stateroom
- Fixed fire extinguisher system in engine room
- 10 automatic inflating life jackets
- 10 person life raft with hydrostatic release
- Hand held flares
- Fire blanket in galley

Исключения

При продаже яхты исключаются личные вещи владельца.

Отказ от ответственности

Компания предоставляет описание судна или яхты добросовестно, но не может гарантировать точность этой информации, а также не ручается за техническое состояние. Покупатель должен проинструктировать своих агентов или оценщиков исследовать представленную информацию более подробно, по собственному желанию. Продажа судна или яхты, изменение цены или снятие с продажи будет происходить без предварительного уведомления.

ФОТОГРАФИИ

Aft View



Aft w/ Swim Platform



Tender / Jet-ski



Bow



Aft Seating



Hatch



Salon



Dining



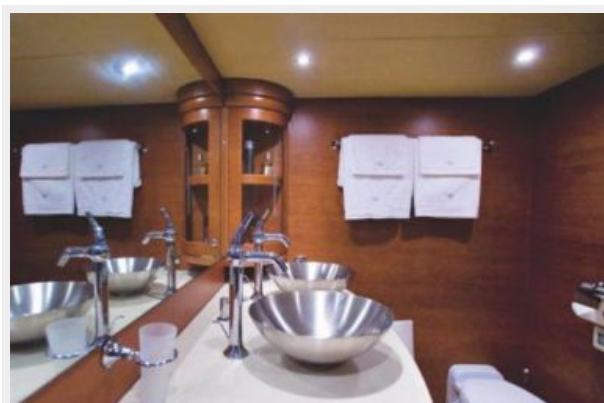
Staircase to Staterooms



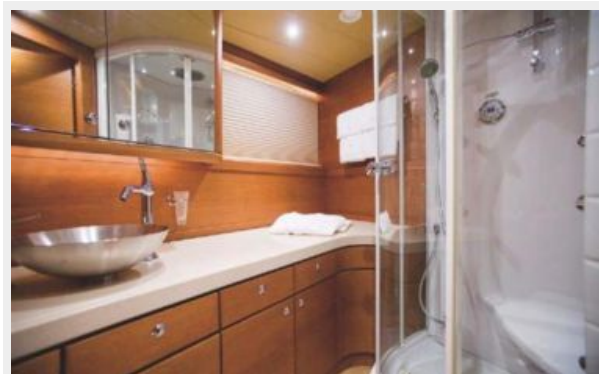
Master



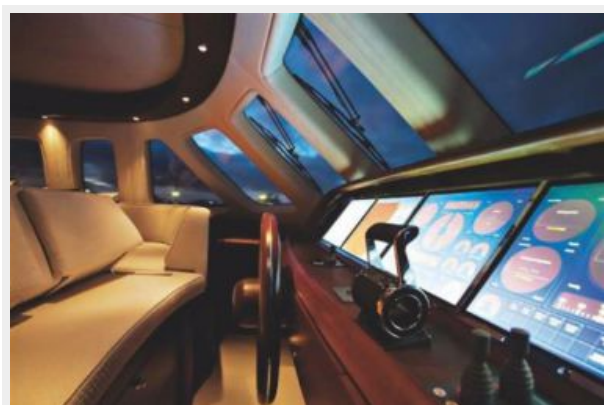
Head



Head



Helm



Engine Room



Engine Room



КОНТАКТЫ

Андрей Шестаков (Andrey Shestakov) – ведущий яхтенный брокер отдела продаж яхт и судов компании Shestakov Yacht Sales Inc. Официальный представитель Shestakov Yacht Sales Inc. для русскоговорящих клиентов в центральном офисе компании в Майами/Форт Лодердейл/Флорида/США.

Контактная информация

Email: andrey@shestakovyachtsales.com

Web: shestakovyachtsales.com

Телефоны

Краснодарский край: **+7(918)465-66-44**

США, Майами, Флорида: **+1(954)274-4435**

Время работы

Понедельник – Суббота: **9:00 - 21:00**
EDT

Воскресенье: **Закрето**

Адрес



Harbour Towne Marina, 850 NE 3rd St,
STE 213, Dania, FL 33004