

GERRY'S FERRY — HATTERAS



Судостроитель: HATTERAS

Длина общая: 64' 0" (19.51m)

Год постройки: 2006

Ширина: 20' 0" (6.10m)

Модель: Моторная яхта

Цена: ЦЕНА ЯХТЫ ПО ЗАПРОСУ

Местонахождение: United States

Купить **Gerry's Ferry — HATTERAS** а также выбрать подходящую вам яхту из нашего каталога яхт вам поможет опытный яхтенный брокер Андрей Шестаков. На сегодняшний день компания **Shestakov Yacht Sales Inc.** имеет большое количество яхт в собственном списке продаж, а также тесно сотрудничает со всеми крупными яхтенными производителями по всему миру.

Для того чтобы купить яхту **Gerry's Ferry — HATTERAS** а также проконсультироваться по любому вопросу связанному с покупкой, продажей, чартером яхт позвоните по телефону **+7(918)465-66-44**.

ОГЛАВЛЕНИЕ

ОГЛАВЛЕНИЕ	2
ХАРАКТЕРИСТИКИ	5
Обзор	5
Основная информация	5
Размеры	5
Скорость, вместимость и масса	6
Размещение	6
Корпус и палуба	6
Информация о двигателе	6
ПОДРОБНОЕ ОПИСАНИЕ	7
Vessel Walkthrough	7
Salon	7
Galley	7
Master Stateroom and Head	8
VIP Stateroom and Head	8
Port Guest Stateroom	9
Guest Head	9
Lower Helm	9
Flybridge Helm	9
Fly Bridge	10
Cockpit	10
Deck Equipment	10
Electrical Equipment	10
Engine Room and Lazzerette	10
Исключения	11
Отказ от ответственности	11
ФОТОГРАФИИ	12
Aft	12

Salon	12
Salon	12
Salon	12
Galley	13
Salon	13
Galley	13
Galley w. Wine Fridge	13
Pilothouse	14
Galley	14
Guest Stateroom	14
Master	14
Master	14
Master TV	14
Head	15
Master	15
Laundry	15
VIP	15
Head	16
Head	16
Flybridge	16
Sunbridge	16
Flybridge	16
Aft Control Station	16
Sidewalk	17
Aft	17
Onan Generator	17
Port Engine	17
Profile	17
КОНТАКТЫ	18

Контактная информация	18
Телефоны	18
Время работы	18
Адрес	18

ХАРАКТЕРИСТИКИ

Обзор

64' Hatteras Motor Yacht 2006 Meticulously Maintained Second Since New Fresh Water Northern Boat Until 11/09 Stored indoors during the summers of 2010, 2011 & 2012

Cruise in Luxury at almost 30 mph Enjoy Hatteras Quality Throughout High Gloss Grain Matched Cherry Interior Open Airy Full Beam Salon Stainless Steel Aft Sliding Doors Galley and Dinette in Raised Pilot House Excellent U-Shaped Galley Granite Counter Tops Aircraft Style Side Door Three Staterooms Three Heads Huge Amidships Master Tub & Shower in Master Head Internal Stairs to Flybridge High Gloss Varnished Cockpit Table Molded Steps to Flybridge PH and Flybridge Full Electronics Avon 360 DL Rigid Bottom CC Inflatable 40 HP Yamaha 4 Stroke OB Dingy Davit Stainless Steel Railing w/ Side Gates Walk-in Lazarette w/ Freezer & 2 Refrigerators Stand-up Engine Room Aft Controls for Docking Hydraulic Bow Thruster

The Hatteras 64 Motor Yacht features sleek, contemporary exterior styling matched to a luxurious interior finished to the industry's highest standards. The model reflects acute attention to customer input, reflected in a fresh accommodation plan and intuitive touches found throughout the vessel. High performance is assured by twin 1400 HP Caterpillar diesels. The 64 Motor Yacht incorporates Hatteras' popular convex hull shape, allowing for more interior space forward and providing for a softer ride in rough water. Propeller tunnels afford this 116,700-pound motor yacht a 4'8" draft with the heaviest engines available.

Основная информация

Тип судна: Моторная яхта

Модельный год: 2006

Год постройки: 2006

Страна: United States

Размеры

Длина общая: 64' 0" (19.51m)

Ширина: 20' 0" (6.10m)

Длина привального бруса: 64' 0"
(19.51m)

Скорость, вместимость и масса

Водоизмещение: 116700 Pounds

Вместимость воды: 265 Gallons

Объем топливного бака: 1515 Gallons

Размещение

Всего кают: 3

Всего ком. состава: 3

Корпус и палуба

Материал корпуса: Fiberglass

Информация о двигателе

Производитель: Caterpillar

Модель: 3412E

Тип двигателя: Inboard

Тип топлива: Diesel

ПОДРОБНОЕ ОПИСАНИЕ

Vessel Walkthrough

Flawless exterior paint is a Hatteras trademark. Boss Lady VI is Cloud White with an Aristo Blue boot stripe. The beautifully decorated interior is finely finished in high gloss grain matched cherry.

The raised pilot house 3 stateroom 3 head layout provides a huge, full beam master amidships; the centerline VIP forward; and the guest stateroom with twins to port. An ensuite head with tub and shower is found in the master and with a shower in the VIP stateroom. The third head with shower can be accessed from the guest cabin or the central hallway.

The full beam salon is beautifully decorated, bright, open and very spacious. Moving forward, the salon flows naturally to the raised galley, pilot house and dinette. Amtico flooring is found here and in all three heads. The large, functional U-shaped galley with granite counter tops and granite dinette table is bright, open, and great for entertaining, living aboard, and cruising. There is ample storage here and throughout the vessel. The Skylounge granite dinette, L-shaped settee, and Stidd seat are also located in the raised pilothouse which offers great views and easy access forward to the 3 staterooms and 3 heads, to the deck through the aircraft style door on the starboard side, and up to the Flybridge via the internal stairs just aft of the dinette on the port side.

From the salon, stainless steel sliding doors lead to the large cockpit with built in transom seating, high gloss varnished table, and 3 additional chairs. Under the molded stairs that lead to the fly bridge is a stairway to the engine room and lazarette. A transom gate provides access to the integral swim platform and transom door to the lazarette and engine room. The flybridge has a large L-shaped settee with a table and additional chairs, ice maker, refrigerator, Pompanette helm and mate chairs, davit and dingy.

Salon

The full beam salon is beautifully decorated, bright, open and very spacious. Moving forward, the salon flows naturally to the raised galley, pilot house and dinette.

Full Beam 190 Sq Ft Salon with Generous Headroom High Gloss Grain Matched Cherry Interior
37" Flat Screen TV High Quality Sound System Large Settee to Starboard (2) Club Chairs to Port
Sliding Stainless Steel Doors to Aft Deck

Galley

Amtico flooring is found in the galley, dinette, and pilothouse area. The large, functional U-shaped galley with granite counter tops and granite dinette table is bright, open, and great for entertaining, living aboard, and cruising. There is ample storage here and throughout the vessel.

The Skylounge granite dinette, L-shaped settee, and Stidd seat are also located in the raised pilothouse which offers great views and easy access forward to the 3 staterooms and 3 heads, to the deck through the aircraft style door on the starboard side, and up to the Flybridge via the internal stairs just aft of the dinette on the port side.

U-Shaped Galley w/Granite Counter Top Under Counter Stainless Steel Sink Sub Zero Freezer and Refrigerator Drawers w/Ice Maker GE Convection/Microwave Oven (new 2011) 4 Burner Cook Top Wine Cooler Cuisinart Grind/Brew/Thermal Coffee Maker Garbage Disposal 15" Flat Screen TV Granite Dinette Stidd Helm Seat Swivels to Dinette Ultra-leather Upholstery Aircraft Style Door to Foredeck Internal Stairs to Flybridge Generous Storage

Entertainment & Convenience Forward Shore Power Connection Aft Throttle, Clutch, & Bow Thruster Controls Central Vacuum SAT TV (5) TV's (37" in Salon) High Quality Sound System Bridge Ice Maker and Refrigerator Galley Ice Maker 76,000 BTU Reverse Cycle Heat & A/C 21.5 KW Onan Generator Subzero Lazarette Refrigerator Subzero Lazarette Freezer Magic Chef Lazarette Refrigerator w/Freezer Water Filtration System

Master Stateroom and Head

The full beam amidships master stateroom is bright and spacious due to the wide beam, a high tray ceiling, excellent lighting, and large opening ports. The king size bed runs fore and aft on the centerline. There are built in night stands, dressers, and full length cedar lines hanging lockers to starboard and port.

Full Beam Amidships Master High Tray Ceiling Tasteful Decorations (2) Large Oval Opening Ports HMC Innerspring King Mattress (new 2011) (2) Night Stands (2) Dressers (2) Full Length Cedar Hanging Lockers Ensuite Head with Tub & Shower

Master Head

The ensuite master head is spacious, comfortable and tastefully decorated.

Amtico Flooring Tub & Shower lid Surface Counter Top Under Counter Sink Single Lever Faucet Plexi Mirrored Ceiling Royal Flush Headhunter Head Exhaust Fan A/C Vent

VIP Stateroom and Head

The VIP stateroom is located forward with a centerline queen and ensuite head with shower. There is ample storage in high gloss cherry cabinetry, (2) cedar lined hanging lockers, and the centerline pedestal berth raises up on gas struts providing another large cedar lined storage area.

Ensuite Head w/Separate Shower Centerline Pedestal Berth Cedar Lined Storage Under Berth w/Gas Struts (2) Cedar Lined Hanging Lockers High Gloss Cherry Cabinetry Deck Hatch with

Screen/Shade 20" LDC TV

VIP Head

The VIP ensuite head is accessible only from the VIP Stateroom.

Large Separate Stall Shower Amtico Flooring Solid Surface Counter Top Under Counter Sink Single Lever Faucet Exhaust Fan A/C Vent Royal Flush Headhunter Head Plexi Mirrored Ceiling

Port Guest Stateroom

The guest stateroom has twin beds, a 20" LCD TV, a large cedar lined hanging locker, a mirrored bulkhead, and private access to the guest head.

A/C Controls Twin Beds Cherry Night Stand Cedar Lined Hanging Locker 20" LCD TV Full Length Mirror Mirrored Bulkhead Private Access to Head Stereo Speakers w/ Volume Control

Guest Head

The guest head has private access from the guest stateroom and also serves as a day head with a door from the hallway at the bottom of the stairway from the raised galley, dinette, helm area.

Private Access to Guest Stateroom Companionway access for Day Head Separate Shower Stall Solid Surface Counter Top Single Lever Faucet Amtico Flooring Royal Flush Headhunter Head Exhaust Vent A/C Vent Plexi Mirrored Ceiling

Lower Helm

Garmin 7200 Chart Plotters Radar Simrad AP25 Auto Pilot Full Engine Instrumentation Electronic Engine Controls Hydraulic American Bow Thruster Battery Parallel Switch ELBEX Onboard Camera Control ACR Spot Light Control Icom IC-M602 VHF (2) Raymarine ST60 Data Displays Air Horn Control

Flybridge Helm

Garmin 7200 Chart Plotters Radar Battery Parallel Switch Simrad AP25 Auto Pilot Full Engine Instrumentation Electronic Engine Controls Hydraulic American Bow Thruster ELBEX Onboard Color CCTV Camera Control ACR Spot Light Control Icom IC-M602 VHF (2) Raymarine ST60 Data Displays Air Horn Control

Fly Bridge

EPIRB L-Shaped Dinette Extra Seating (2) Pompanette Helm Chairs Refrigerator w/ Ice maker Nautical Structures Hydraulic Dinghy Davit and cradles Avon Seasport 360DL Center Consul Rigid Bottom Inflatable Yamaha 40HP 4 Stroke OB

Cockpit

Cockpit Throttle, Clutch, & Bow Thruster Controls Transom Settee High Gloss Varnished Table (3) Chairs Stainless Steel Sliding Salon Door Molded Fiberglass Stairs to Flybridge Hinged Lazarette & Engine Room Access under Flybridge Stairs Transom Gate to Integral Swim Platform Transom Door to Lazarette & Engine Room (2) Swim Platform Pop-up Dock Line Cleats (2) 50 Amp Power Cord Reels Dockside Water Connection Freshwater Wash Down

Deck Equipment

Wide side decks and stainless steel bow rails all the way to the cockpit make it very safe and easy to move around on deck. Gates in the railing and a folding gangway with fore and aft mounts make boarding easy from any dock.

Maxwell Vertical Windlass Stainless Steel Anchor 300' 5/16" Anchor Chain Foredeck Shore Power Connections Marquipt Gangway with Fore and Aft Mounting Hardware Stainless Steel Rails with Gates Sunpad w/Cover Fender Hooks Chafe Gear (8) Large Mooring Cleats T-track w/ Slides for Fenders

Electrical Equipment

21.5 KW Onan Generator w/ 1300 Hours AC Distribution Panel in Salon Forward Shore Power Connection Dual 50 AMP Cable Master Power Cord Reels Aft DC Distribution Panel in Lower Helm Area Battery & Parallel Switches in Engine Room (4) 8D AGM Batteries

Engine Room and Lazzerette

The spotlessly clean stand-up Engine room and Lazarette have conveniently located grab rails. There is plenty of room to get to equipment and all sides of both engines.

Twin CAT 3412 E 1400 HP Only 1050Hours ZF Gears Onan 21.5 KW Generator Only 1050 Hours Hydraulic American Bow Thruster Aft Deck Engine Controls 5 Way Oil Change System Fuel Transfer System Spare Fuel Transfer System Electric Main Engine Fuel Priming Pumps Racor Fuel Filters Sea Star Power Steering Rexthron Hydraulic Pump (Starboard Engine) Stand-up Headroom in Engine Room Engine Room Grab Rails Prop Puller Hitachi Air

Compressor Sea Star Power Steering (4) Remote A/C Compressors 76,000 BTU (1) Lazarrette 4.6 Cubic Foot Subzero Freezer (1) Lazarrette 4.6 Cubic Foot Subzero Refrigerator (1) Lazarrette Magic Chef Refrigerator w/Freezer Water Filtration System

Исключения

При продаже яхты исключаются личные вещи владельца.

Отказ от ответственности

Компания предоставляет описание судна или яхты добросовестно, но не может гарантировать точность этой информации, а также не ручается за техническое состояние. Покупатель должен проинструктировать своих агентов или оценщиков исследовать представленную информацию более подробно, по собственному желанию. Продажа судна или яхты, изменение цены или снятие с продажи будет происходить без предварительного уведомления.

ФОТОГРАФИИ

Aft



Salon



Salon



Salon



Salon



Galley



Galley



Galley w. Wine Fridge



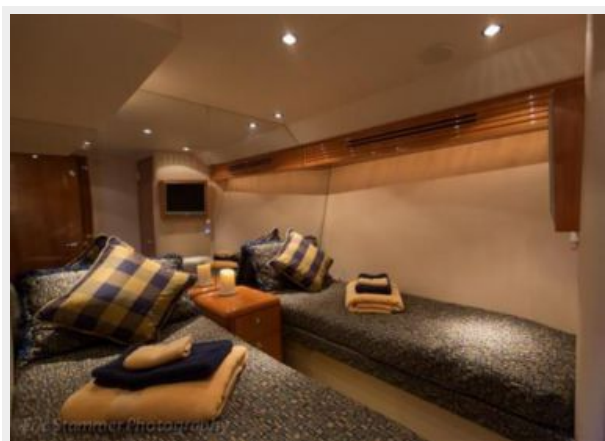
Galley



Pilothouse



Guest Stateroom



Master



Master

Master TV



Master



Head



Laundry



VIP



Head



Head



Flybridge



Sunbridge



Flybridge



Aft Control Station



Sidewalk



Aft



Onan Generator



Port Engine



Profile



КОНТАКТЫ

Андрей Шестаков (Andrey Shestakov) – ведущий яхтенный брокер отдела продаж яхт и судов компании Shestakov Yacht Sales Inc. Официальный представитель Shestakov Yacht Sales Inc. для русскоговорящих клиентов в центральном офисе компании в Майами/Форт Лодердейл/Флорида/США.

Контактная информация

Email: andrey@shestakovyachtsales.com

Web: shestakovyachtsales.com

Телефоны

Краснодарский край: **+7(918)465-66-44**

США, Майами, Флорида: **+1(954)274-4435**

Время работы

Понедельник – Суббота: **9:00 - 21:00**
EDT

Воскресенье: **Закрито**

Адрес



Harbour Towne Marina, 850 NE 3rd St,
STE 213, Dania, FL 33004