

РАРО — VIKING



Судостроитель: [VIKING](#)

Год постройки: 2008

Модель: Катер для спортивной рыбалки

Цена: **ЦЕНА ЯХТЫ ПО ЗАПРОСУ**

Местонахождение: United States

Длина общая: 74' 0" (22.56m)

Ширина: 19' 4" (5.89m)

Мин. осадка: 5' 6" (1.68m)

Макс. осадка: 6' 0" (1.83m)

Крейс. скорость: 33 Kts. (38 MPH)

Макс. скорость: 41 Kts. (47 MPH)

Купить **Раро — VIKING** а также выбрать подходящую вам яхту из нашего каталога яхт вам поможет опытный яхтенный брокер Андрей Шестаков. На сегодняшний день компания **Shestakov Yacht Sales Inc.** имеет большое количество яхт в собственном списке продаж, а также тесно сотрудничает со всеми крупными яхтенными производителями по всему миру.

Для того чтобы купить яхту **Раро — VIKING** а также проконсультироваться по любому вопросу связанному с покупкой, продажей, чартером яхт позвоните по телефону **+7(918)465-66-44**.

ОГЛАВЛЕНИЕ

ОГЛАВЛЕНИЕ	2
ХАРАКТЕРИСТИКИ	3
Основная информация	3
Размеры	3
Скорость, вместимость и масса	3
Размещение	3
Корпус и палуба	3
Информация о двигателе	4
ПОДРОБНОЕ ОПИСАНИЕ	5
Special Comments	5
Vessel Description	5
Исключения	13
Отказ от ответственности	13
ФОТОГРАФИИ	15
КОНТАКТЫ	27
Контактная информация	27
Телефоны	27
Время работы	27
Адрес	27

ХАРАКТЕРИСТИКИ

Основная информация

Тип судна: Катер для спортивной рыбалки

Подкатегория: Convertible

Модельный год: 2008

Год постройки: 2008

Страна: United States

Размеры

Длина общая: 74' 0" (22.56m)

Ширина: 19' 4" (5.89m)

Мин. осадка: 5' 6" (1.68m)

Макс. осадка: 6' 0" (1.83m)

Скорость, вместимость и масса

Крейс. скорость: 33 Kts. (38 MPH)

Макс. скорость: 41 Kts. (47 MPH)

Водоизмещение: 135000 Pounds

Вместимость воды: 385 Gallons

Объем топливного бака: 3000 Gallons

Размещение

Всего кают: 5

Всего ком. состава: 5

Каюта капитана: Да

Каюты экипажа: 1

Койки экипажа: 2

Корпус и палуба

Материал корпуса: Fiberglass

Комплектация корпуса: Deep Vee

Информация о двигателе

Двигатели: 2

Производитель: MTU

Модель: 16V2000

Тип двигателя: Inboard

Тип топлива: Diesel

ПОДРОБНОЕ ОПИСАНИЕ

Special Comments

PAPO is an exceptionally clean and well optioned 74' Viking maintained by a full time captain and mate for a long time boating family. The PAPO has reliable and low hour 16V2000 MTU's, a spotless engine room, large satin finished teak salon, the preferred 5 stateroom layout and a beautiful teak cockpit and mezzanine. Her gelcoat gleams. With a new Garmin chartplotter, oceanview nightvision camera, bulletproof Furuno radar w/ BB 1200 Sounder, KVH Satellite TV, Eskimo Ice Machine, Aquamatic Sea Recovery Watermaker, Underwater lights and Release Marine Helm Pod Fighting Chair/Helm Chair Package PAPO is turnkey and ready to go! PAPO is offered for sale by a market aware seller and will be featured at the upcoming Ft. Lauderdale International Boat Show on the SW corner of the facedock.

Vessel Description

Salon

- Hunter Douglas silhouette blinds
- Wall to wall carpeting with lead lined padding for sound absorption
- Canvas carpet runner for Salon
- Satin teak cocktail table, hi/low
- Sofa with underneath storage for rods
- Custom Amtico flooring at salon entrance
- Fixed, frameless side windows with tinted, tempered glass
- Teak mirror on aft side of galley dinette
- Home theater center with 50" Fujitsu LED TV on a vertical mechanism
- Bose Lifestyle system with custom surround sound
- Additional phone & electrical outlet inside entertainment cabinet for fax machine
- U-Line Wine cooler concealed in teak cabinetry
- Overhead Xenon lights recessed with dimmer switches
- Indirect decorative rope lighting behind valances
- Automatic sliding salon door, molded fiberglass door with window, key lock and teak finish
- Teak cabinetry with drawers and bottle storage
- Teak lambrequins with fabric embroidery
- Teak trim where Amtico floor meets carpet
- Custom fabric & teak valances
- Teak aft bulkhead
- Etched glass above dinette
- Chanel etched glass sculpture featuring a turtle, a lobster and a stone crab forward of the dinette
- Sony Blueraay player
- Lift up storage with ICOM M604 VHF radio

Galley

- (4) Sub-zero large capacity under counter refrigerator and 2 freezer under counter deep drawers
- Scottsman Clear ice machine
- (1) 110V outlet on bottom of upper cabinet above sink + one other
- Satin galley faucet
- Custom Amtico teak & holly flooring
- Dimmers on overhead halogen lights
- Custom granite galley island with refrigeration and freezers
- Granite counter tops with 6" overhang for bar stool area
- Stainless steel sink
- Satin Kenmore Elite trash compactor
- Gaggenau 4 burner cooktop
- 3 custom release bar stools with footrest

Dinette

- Dinette couch with removable cushions and storage underneath
- Companionway entrance located behind dinette
- Teak dinette table with satin finish and single pedestal, thru bolted
- Etched glass above dinette

Day Head

- **Custom aircraft latched pullout long storage drawers**
- **Forward and aft holding tank sentrys**
- **Fresh water gauge**
- **Sea Recovery touch screen watermaker control**
- **Head Hunter elongated head**
- **Granite countertop with satin fixtures**

Companionway

- Bilge areas painted with Awlgrip, access hatches and lit
- Carpeting and carpeted steps from galley through companionway
- New Ariston Washer/Dryer
- Central vacuum unit connection with accessories
- Curved staircase with banister along starboard hull side
- Laundry center with stackable washer and dryer behind teak door
- Overhead Xenon lights recessed in headliner
- Water tank level gauge and pump indicator located in sub-panel

Master Stateroom

- Custom king size mattress

- New 40
- Teak topped entry credenza w/ 4 drawers
- Teak topped end tables
- Safe and storage under lift top bed
- New Samsung 40" LCD flat screen TV w/ Bose 3/2/1 CD/DVD player with Sony Blueraу
- Additional 110V, telephone and television outlet
- Table lamps- hardwired
- Corner settee
- Large hanging locker
- Dimmer lights
- Large beveled wall mounted mirrors
- Custom fabrics
- Linen storage
- Custom fabrics
- Custom headboard
- Gardall Safe

Master Head

- Mirrored ceiling
- Large wall mounted mirrors
- One piece custom frameless shower door
- Large stall shower
- Grohe brushed nickle shower & faucet fixtures, towel bars and rings
- Corian vanity countertop with teak facing on lower vanity
- Amtico teak and holly flooring
- Magnum Opus elongated Head Hunter head
- Custom wall paper
- Exhaust fan
- Large storage closet with shelves and mirrored door

Forward Guest VIP Stateroom

- A/C and heat temperature control
- Centerline queen with pillowtop
- Upgraded orthopedic mattresses
- Sony blueray in port locker
- 35" LCD flat screen TV mounted in teak panel
- Carpeting
- Quilted bedspreads
- Teak hanging locker, maple-lined and spacious for hanging clothes
- Overhead Xenon lights and decorative rope lighting
- Separate switches for reading lights
- Stereo speakers recessed in headliner tied into TV and stereo
- Teak storage cabinets on port and starboard sides of the bed

- (4) Large storage drawers under the bed
- Teak shelf

Forward Guest VIP Head

- Mirrored ceiling
- Medicine cabinet with mirrored doors
- Amtico teak & holly flooring
- Granite vanity countertop with teak facing and mirror
- A/C and heat with register in soffit
- Exhaust fan with vent
- Shower light
- Stall shower
- Sink with Grohe faucet
- Towel bar and ring

Port Guest Stateroom and Head

- Temperature controlled a/c and heat
- Upper and lower berths
- Upgraded single custom full bed
- Quilted bedspreads
- Carpeting
- Hanging locker, maple lined
- Storage drawers located under hanging locker
- Stereo speakers recessed in soffit - tied into salon stereo
- 22" Flat screen television
- Sole DVD player
- Overhead Xenon lights and decorative rope lighting
- Teak shelf
- Mirrored ceiling
- Medicine cabinet with mirrored doors
- Amtico teak & holly flooring
- Granite vanity countertop with teak facing and mirror
- A/C and heat with register in soffit
- Exhaust fan with vent
- Shower light
- Stall shower
- Sink with Grohe faucet
- Towel bar and ring

Starboard Stateroom

- Temperature controlled a/c and heat
- Upper and lower berths

- Storage drawers located under hanging locker
- Stereo speakers recessed in soffit tied into salon stereo
- Upgraded twin mattresses
- Quilted bedspreads
- Carpeting
- Hanging locker, maple lined
- 15" Sharp flat screen TV
- Overhead Xenon lights and decorative rope lighting
- Built in overhead speakers
- Majellite wall covering

Crew Quarters and Head

- Upgraded orthopedic mattresses
- Upper & lower bunks
- Custom fabrics
- 20" LED flat screen television
- DVD player
- Access door to engine room
- Corian storage locker top
- Custom wall paper
- Stall shower
- Amtico teak and holly flooring
- Mirrored ceiling
- Brass shower & faucet fixtures, towel bars and rings
- Magnum Opus head
- Corian vanity countertop

Deck Equipment

- Bow pulpit
- Fresh water washdown on bow inside anchor locker
- Rub rail paint matches gel coat
- Lewmar RC 2500 hydraulic windlass w/ 250' rope and 25' chain
- Flybridge handrails wrap around front of bridge 18' on both sides

Cockpit

- Custom teak deck, covering and coaming boards
- Boarding box, fiberglass with nonskid, lift up top and storage
- Cable TV and telephone connections in cabinet under starboard gunwale
- Phone cable is CAT-5 to accommodate data phone systems
- Dockside electric connection in port and starboard cabinets
- Dockside water connection with pressure reducing valve
- Electric sliding salon door

- Engine room access hatch and door lock
- Extended flybridge overhang for shade
- Observation mezzanine with starboard aft facing lounge seating with covered cushions
- Hinged seats with storage under lounge area
- Tackle cabinet with pull-out drawers and large bait freezers
- New C-Worthy mezzanine seating with fabric and armrests
- Fresh water washdown with hose bib
- 2 12V outlets forward under coaming on each side
- Offset pedestal fighting chair (Release Marine)
- Reinforced stainless steel cleats
- Gaff storage on starboard side
- Electrical inlet box
- Self bailing cockpit with large scuppers
- Sidelockers
- Cockpit misters
- Recessed refrigerated chill box under-mounted in mezzanine step
- Gaskets for all lids, doors and access doors
- Grab rails at cockpit haunch
- Ladder to flybridge with teak treads
- "T" in dockside water inlet to fill water tank
- Walk-through transom door with lift gate
- Transom swim steps
- Transom mounted fishbox with drain
- Y-valve for fresh & salt water washdowns
- Eskimo ice machine w/ discharge in cockpit sole
- Livewell in cockpit box
- Saltwater supply & fitting w/ standard A/C pump for on-deck livewell
- Offshore bait solution on deck live wells (2)
- Stainless steel and flush mounted rod holders
- Indirect lighting
- Additional hose bib to make R/O water out of dock water
- Dual thermostat for cockpit freezer
- Stainless steel gas springs for fish box, as well as sole port and starboard boxes
- Additional cable master
- Fish box macerator
- Lazarette hatch with access to steering, trim tabs and drain pumps
- Circulation blowers in haunches
- Hydraulic outriggers
- Outriggers mounted on flybridge
- Upgraded 1000 GPH for transom livewell
- Custom Stamoid sun shade and full cockpit cover

Flybridge

- Cockpit ladder with teak steps to flybridge
- Custom Release Marine varnished teak helm pod
- 3 Release Marine helm chairs
- Power assist steering
- JL Audio stereo in bridge w/ speakers
- Buell horns
- Recessed Miya Epoch electric teaser reels; 24V

Electronics

- New Garmin 7616 touchscreen chart plotter
- Garmin 5008 backup chart plotter
- Garmin 5008 chart plotter in tower
- Furuno NavNet chart plotter at helm
- 4 Total GPS chart plotters 3 at helm and 1 at tower
- Dual KEP monitors port & starboard
- Furuno BB radar and sounder, NavNet chart plotter and cameras can all be shown on KEP monitors
- Custom Release Marine bow thruster controls within the single lever engine controls
- Backup bow thruster control in right lift up storage locker
- Overhead drop down electronics box with engine displays, auto pilot, RD 30 and ICOM M604 VHF
- ICOM M604/M802 VHF Radio System (2)
- SHA-5018 17.6 Galaxy 2-pc. VHF
- AUTOPILOT SYSTEM
- NavPilot500 autopilot system
- HRP11-12 HYDR rev pump set 12v

Sonar System

- Thru hull dual Furuno frequency sonar system, CH3000BB/88/155/340 24-VDC
- Furuno FCV 1200L

Radar System

- KEP 15" Monitor
- Furuno 2137S/BB 30KW S Band radar 6'
- Furuno ships remote radar control board mounted in port side lift up locker at helm

Fishfinder System

- KEP FUR-MU170C 15" color LCD monitor
- FUR-FCV1200BB black box version of the FCV1200
- CA50/200T-R99 Urethane 2KW Transducer w/ 10M cable
- Fair60 HS Fairing block

Chartplotter system

- FUR-MU170c 17" Color LCD Monitor
- Marci computer w/ Maxsea software/Nobletec
- Wireless Keyboard
- Nau-000505 Panel mount mouse

Satellite TV system

- 24" marine satellite TV antenna system HD7
- Power supply-110/220v in, 12v out, 10 amps
- 6 HD boxes for each room and Salon
- 500 VA battery backup unit
- DSS60 receiver

Stereo system

- Clarion head unit
- 3 Outside zones (Cockpit, tower and aft station)
- (6) speakers in cockpit and (2) subs
- All JL speakers and amps
- (6) Underwater lights

Tower

- Palm Beach Towers 10-step Tuna Tower for 74' Open Bridge, brushed pipe
- (4) Antenna, stand-offs & halyards
- Tower antennas and pipe finished in flat black for glare reduction
- Molded standing platform w/ coupler box on platform
- 2 Quartz lights molded 110V w/ stainless steel bezel
- Control box 60" w/ flush mounted compass
- Tower sunshade molded w/ painted oval center tube, (4) welded antenna mounts
- Antenna bracket SAT TV Dome
- Stern light molded into extended platform
- Wired Anchor light on sunshade and masthead light under control box
- Hydraulic Pipewelders 43'-4 Spreader solid aft bar
- Hydro rigger & kit Hydro locking system
- Center rigger pipewelders
- Bow thruster control on control box
- Bench seat with backrest
- (2) flag staffs under each side of platform perimeter rail
- Bond tower
- Upgraded SAT TV HD7" dome tri bands for Latin America
- Painted underside of platform & sunshade
- Maya Epoch US9 Super teaser reels in overhead recessed teaser box
- 3 VHF speakers inside teaser reel box

Engine Room

- Chilled water AC system
- Two MTU 16V2000 M93- 2400HP engines
- Awlgrip engine room
- Charles Industries PM3 voltage stabilizer transformer
- Twin 32 KW Onan generators w/ 4738hrs port, 260 hrs starboard (hr meter replaced at roughly 4400 hrs)
- Aquamatic Sea Recovery 1200 GPD watermaker with auto backflush
- Fuel transfer system, 220V AC pump with 24VDC back-up
- Separ 2000 fuel filter inline on fuel transfer pumps
- Craftsman 4-drawer toolbox
- 24V Fuel priming pumps
- Engine room entrance gauges installed into fiberglass
- Oil changing system
- Awlgrip brass thru-hulls and sea strainers
- Dual fuel filters painted snow white
- Back up sea water pump for air conditioning system
- Headhunter fresh water pump with plumbed backup Mach 5
- Hydraulic “emergency” bilge pump manifolded to forward, engine room and cockpit bilges
- Access door to crew quarters
- Shelf over generator and second generator
- Total of 3 fuel tanks
- Dual power steering pumps on port engine
- Power assist hydraulic steering
- Five-bladed Veem Nibral propellers
- Racor dual fuel/water separator filters for main engines and generators
- 2 Aquamet high-strength stainless steel shafts
- Structural steel engine beds
- Nibral struts
- Delta T engine room ventilation system
- Second fuel transfer pump in parallel as back-up
- Trim tabs, dual piston with center tabs recessed in transom
- 30 gallon electric water heater
- Octoplex breaker panels
- (3) Engine room cameras

Исключения

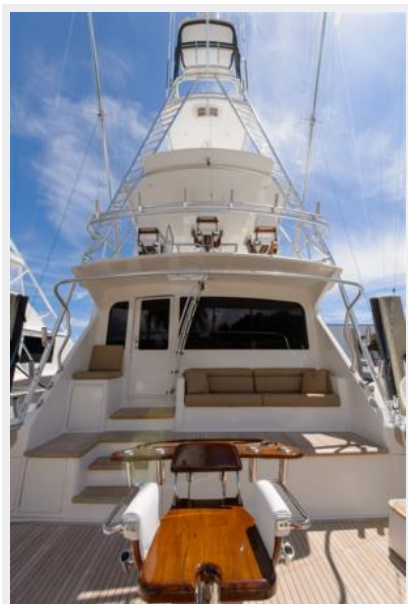
При продаже яхты исключаются личные вещи владельца.

Отказ от ответственности

Компания предоставляет описание судна или яхты добросовестно, но не может гарантировать точность этой информации, а также не ручается за техническое состояние. Покупатель должен проинструктировать своих агентов или оценщиков исследовать представленную информацию более подробно, по собственному желанию. Продажа судна или яхты, изменение цены или снятие с продажи будет происходить без предварительного уведомления.

ФОТОГРАФИИ













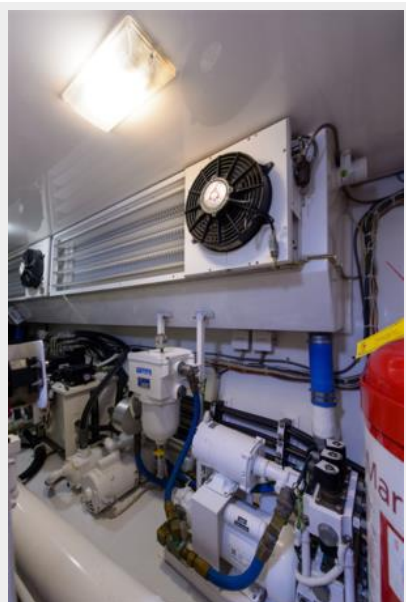












КОНТАКТЫ

Андрей Шестаков (Andrey Shestakov) – ведущий яхтенный брокер отдела продаж яхт и судов компании Shestakov Yacht Sales Inc. Официальный представитель Shestakov Yacht Sales Inc. для русскоговорящих клиентов в центральном офисе компании в Майами/Форт Лодердейл/Флорида/США.

Контактная информация

Email: andrey@shestakovyachtsales.com

Web: shestakovyachtsales.com

Телефоны

Краснодарский край: **+7(918)465-66-44**

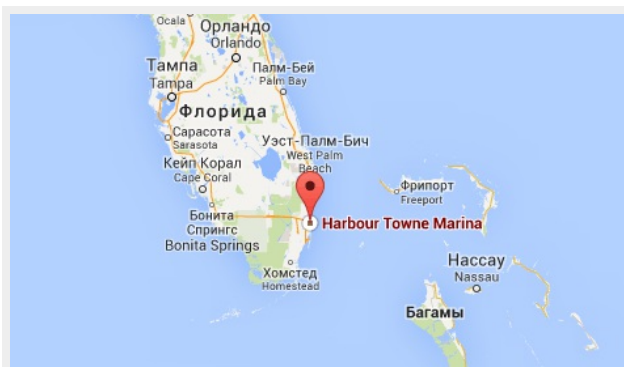
США, Майами, Флорида: **+1(954)274-4435**

Время работы

Понедельник – Суббота: **9:00 - 21:00**
EDT

Воскресенье: **Закрито**

Адрес



Harbour Towne Marina, 850 NE 3rd St,
STE 213, Dania, FL 33004