

I'M DOIN ALRIGHT — MARQUIS



Судостроитель: MARQUIS

Длина общая: 50' 0" (15.24m)

Год постройки: 2011

Модель: Крейсер

Цена: **ЦЕНА ЯХТЫ ПО ЗАПРОСУ**

Местонахождение: United States

Купить I'm Doin Alright — MARQUIS а также выбрать подходящую вам яхту из нашего каталога яхт вам поможет опытный яхтенный брокер Андрей Шестаков. На сегодняшний день компания Shestakov Yacht Sales Inc. имеет большое количество яхт в собственном списке продаж, а также тесно сотрудничает со всеми крупными яхтенными производителями по всему миру.

Для того чтобы купить яхту I'm Doin Alright — MARQUIS а также проконсультироваться по любому вопросу связанному с покупкой, продажей, чартером яхт позвоните по телефону **+7(918)465-66-44**.

ОГЛАВЛЕНИЕ

| | |
|--------------------------|----|
| ОГЛАВЛЕНИЕ | 2 |
| ХАРАКТЕРИСТИКИ | 5 |
| Основная информация | 5 |
| Размеры | 5 |
| Размещение | 5 |
| Корпус и палуба | 5 |
| Информация о двигателе | 5 |
| ПОДРОБНОЕ ОПИСАНИЕ | 6 |
| Vessel Description | 6 |
| Исключения | 7 |
| Отказ от ответственности | 7 |
| ФОТОГРАФИИ | 8 |
| Bow Profile | 8 |
| Stern Profile | 8 |
| Profile | 8 |
| Port Profile | 8 |
| Windshield | 8 |
| Forward Sun Deck | 8 |
| Forward Sun Deck | 9 |
| Stern Profile | 9 |
| Starboard House | 9 |
| Cockpit | 9 |
| Salon | 9 |
| Salon | 10 |
| Salon | 10 |
| Salon | 10 |
| Galley | 10 |
| Galley | 10 |

| | |
|-----------------------------|----|
| Bar/Bottle Storage | 10 |
| Retractable Roof | 11 |
| Helm | 11 |
| Helm | 11 |
| Helm/Galley | 11 |
| Helm | 11 |
| Helm | 11 |
| Companionway | 12 |
| Master (Forward) Stateroom | 12 |
| Master Stateroom Television | 12 |
| Master Stateroom Head | 12 |
| Port Guest Stateroom | 12 |
| Port Guest Stateroom | 12 |
| Port Guest Stateroom | 13 |
| Starboard Guest Stateroom | 13 |
| Starboard Guest Stateroom | 13 |
| Guest Stateroom Head | 13 |
| Breaker Panel | 13 |
| Generator | 13 |
| Engine Room | 14 |
| Engine Room | 14 |
| Engine Room | 14 |
| Pod Drive | 14 |
| Engine Room | 14 |
| КОНТАКТЫ | 15 |
| Контактная информация | 15 |
| Телефоны | 15 |
| Время работы | 15 |
| Адрес | 15 |

ХАРАКТЕРИСТИКИ

Основная информация

Тип судна: Крейсер

Модельный год: 2011

Год постройки: 2011

Страна: United States

Размеры

Длина общая: 50' 0" (15.24m)

Размещение

Всего кают: 3

Всего ком. состава: 2

Корпус и палуба

Материал корпуса: Fiberglass

Информация о двигателе

Двигатели: 3

Производитель: Volvo Penta

Модель: IPS-600

Тип топлива: Diesel

ПОДРОБНОЕ ОПИСАНИЕ

Vessel Description

I'M DOIN ALRIGHT is a 2011 50' Marquis that is being offered for sale by her original owner. The boat is well-equipped and has low hours on the upgraded, Volvo IPS-600 engines. I'M DOIN ALRIGHT is captain-maintained and a must-see for anyone in the 50' Marquis marketplace! Call today for more details.

Additional photos are available upon request. Salon

• L-Shaped Couch with storage under seating • Hi-Lo Coffee/Dining Table • Wine and/or Liquor Display Cabinet for Bottles & Glasses • (2) Designer Chairs • Solé 32" Flat Panel Television (on an elevator) • Remote AV Input for Television • DVD Player for Television • Clarion iPod, SAT, FM/AM, Player with MP-3 Input • 12-volt Outlet • Aft Salon Doors open wide to Cockpit (fully open) • Electric-Powered, Operated Sun Shade for the Opening Roof • Electric-Powered Opening Roof • AC/DC Electric Distribution Panels • Central Vacuum System • (3) Zones of Air Conditioning/Heat • Large Salon Windows provide great lighting • Overhead Lighting with Color Capability **Galley** • Solid Surface Counter Top with Stainless Steel Rail • Large Stainless Steel Sink • EURO-KERRA Princess, 2-Burner Ceramic Stove Top • Exhaust Fan • Large Drawer Behind Sink for Flatware • Under-Counter Contoure Convection Microwave Oven (Stainless Steel Finish) • VITRIFRIGO Refrigerator/Freezer Drawers • Under-Counter Built-in Trash Compartment • Pantry Cabinetry & Drawers for Storage • 110-volt Receptacle **Master Stateroom** • Island Queen Berth (located forward) with Storage Drawers below • Built-in Night Stands (port & starboard) • Shelving for Display & Storage Purposes • Reading Lights (2) • Port & Starboard Port Holes • Skylight Windows for Natural Light • Overhead Hatch for Ventilation and Natural Light • Large Port & Starboard Hanging Lockers • Solé Flat Screen Television • Clarion M309 FM/SAT/CD Player (with MP-3 input) • DVD player for Television • 12-volt Outlet • 110-volt Receptacle • Carbon Monoxide Detector • Air Conditioning/Heat Display • Private En-Suite Head **Master Stateroom Head** • Vanity with Glass Bowl Sink • Cabinetry & Drawer Storage • Spacious, Glass-Enclosed Shower Stall (with Spa Type Overhead Shower) • VACUFLUSH Toilet • Opening Port Hole for Natural Light and Ventilation • Exhaust Fan • 110-volt Receptacle • Blackwater Holding Tank Monitor • Skylight Opaque Window for Natural Light • Towel Rack **Port Guest Stateroom** • Queen Berth • Built-in Night Stand with Drawer • Large Window for Natural Light • Opening Port Hole for Ventilation & Natural Light • Skylight Opaque Window for Natural Light • Storage Drawers Throughout • Large Hanging Locker • Solé 15" Flat Screen Television • Clarion M309 FM/SAT/CD Player (with MP-3 player input) • DVD Player for Television • 12-volt Outlet • 110-volt Receptacle • Carbon Monoxide Detector • Air Conditioning/Heat Display • Hull Window with Blinds • Storage **Companionway Head** • Vanity with Glass Bowl Sink • Drawers Underneath Vanity • Cabinets Throughout • Spacious, Glass-Enclosed Shower Stall (with Spa Type Overhead Shower) • Opening Port Hole for Ventilation & Natural Light • VACUFLUSH Toilet • Exhaust Fan • 110-volt Receptacle • Blackwater Holding Tank Monitor • Skylight Opaque Window for Natural Light Starboard Guest Stateroom • (2) Single Berths • Built-in Night Stand

with Cabinet • Reading Lights (2) • Hanging Locker • Storage Locker • Drawers for Storage • Large Window for Natural Light • Skylight Opaque Window for Natural Light • 12-volt Outlet • 110-volt Receptacle • Carbon Monoxide Detector • Air Conditioning/Heat (shared with Port Stateroom) **Helm Area & Electronics** • Electric-Powered Helm Seating • Windshield Wipers with Washers • Electric-Powered Sunshade for Roof • (2) Raymarine E-120 with: GPS, Chart Plotter, Open-Array Radar, Depthfinder • Raymarine Ray-240 VHF Radio with Remote Speaker & Hailer • Raymarine Auto Pilot with Remote Smart Controller • GO-LIGHT, Helm-Operated Search Light • Lectro-Tab Trim Tabs • Tilt Steering Wheel • (3) Volvo-Penta, Electronic Engine Instrumentation Displays • Fuel Gauge • Volvo-Penta Engine Electronic Throttle/Shift • Volvo-Penta Joy Stick (for docking or close quarter maneuvering) • FIREBOY Engine Room Fire Extinguishing Monitor • 12-volt Outlet • DANFORTH Compass • Helm-Operated MAXWELL Windlass **Cockpit/Aft Deck Area** • Built-in Locker to Port with: Princess Electric Grill, Raritan Ice Maker, NORCOLD Refrigerator/Freezer, Sink with Water, and Bottle/Glass Storage • Teak Deck with Steps to Bow (port & starboard) • Additional Storage Lockers • Comfortable Aft Deck Seating (retracts aft to increase the size of cockpit) • Hot/Cold Cockpit Shower • Freshwater Wash Down Faucet • Clarion Player • Recessed, Overhead Lighting • Upgraded JL-Audio Sound System • Storage under Aft Seating **Hull & Deck Equipment** • Hydraulic Swim Platform with Stainless Steel Boarding Ladder • Stainless Steel Transom Gates with Plexiglass Inserts (port & starboard) • Freshwater Wash Down Faucet • MAXWELL Windlass Anchoring System with Foot & Helm-Operated Switches • Stainless Steel Handrails • Freshwater Faucet for Washing Anchor and Rode (Bow) • Bow Sun Lounge with Cushion • Sun Shade Covers for Windshield • Upgraded, JL-Audio Sound System • SAT Dome • Radar Arch • Navigation Lights • Antenna • Horn(s) • Underwater Lights **Mechanical & Electrical** • (3) Volvo IPS-600 (435hp each) with 340 hours • Kohler 23 KW Generator with Sound Shield • (2) 50-amp Shore Power Chords on Glendenning Electric Cable Reels • (2) Charles ISO-Boost 50 Transformers for Incoming Shore Power • Charles 20-amp Battery Charger • Charles 60-amp Battery Charger • REVERSO Oil Change System • Battery Switches (Port Engine, Center Engine, Starboard Engine & Generator) • Water Heater • Overboard Discharge System • 8 Batteries • FIREBOY Fire Extinguishing System **Exclusions** • Owner's Personal Belongings.

Исключения

При продаже яхты исключаются личные вещи владельца.

Отказ от ответственности

Компания предоставляет описание судна или яхты добросовестно, но не может гарантировать точность этой информации, а также не ручается за техническое состояние. Покупатель должен проинструктировать своих агентов или оценщиков исследовать представленную информацию более подробно, по собственному желанию. Продажа судна или яхты, изменение цены или снятие с продажи будет происходить без предварительного уведомления.

ФОТОГРАФИИ

Bow Profile



Stern Profile



Profile



Port Profile



Windshield



Forward Sun Deck



Forward Sun Deck



Stern Profile



Starboard House



Cockpit



Salon



Salon



Salon



Salon



Galley



Galley



Bar/Bottle Storage



Retractable Roof



Helm



Helm



Helm/Galley



Helm



Helm



Companionway



Master (Forward) Stateroom



Master Stateroom Television



Master Stateroom Head



Port Guest Stateroom



Port Guest Stateroom



Port Guest Stateroom



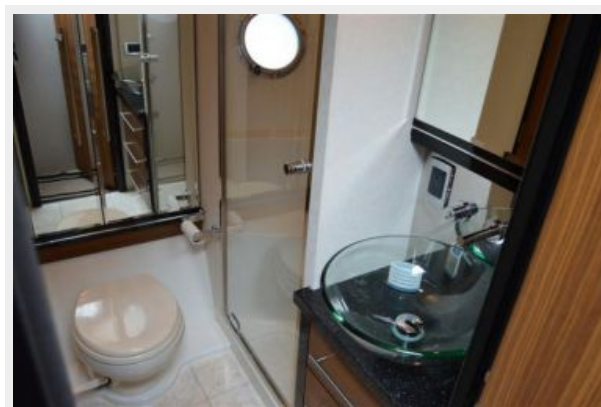
Starboard Guest Stateroom



Starboard Guest Stateroom



Guest Stateroom Head



Breaker Panel



Generator



Engine Room



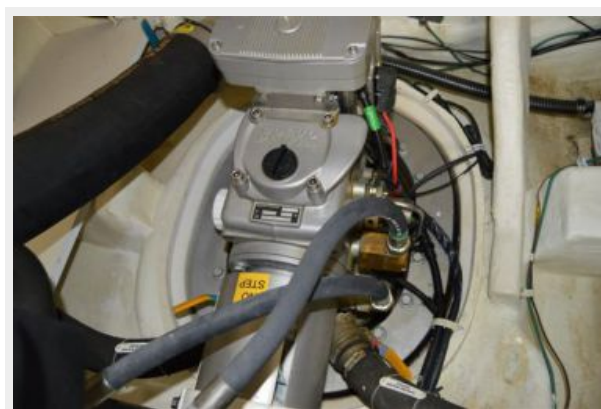
Engine Room



Engine Room



Pod Drive



Engine Room



КОНТАКТЫ

Андрей Шестаков (Andrey Shestakov) – ведущий яхтенный брокер отдела продаж яхт и судов компании Shestakov Yacht Sales Inc. Официальный представитель Shestakov Yacht Sales Inc. для русскоговорящих клиентов в центральном офисе компании в Майами/Форт Лодердейл/Флорида/США.

Контактная информация

Email: andrey@shestakovyachtsales.com

Web: shestakovyachtsales.com

Телефоны

Краснодарский край: **+7(918)465-66-44**

США, Майами, Флорида: **+1(954)274-4435**

Время работы

Понедельник – Суббота: **9:00 - 21:00**
EDT

Воскресенье: **Закрито**

Адрес



Harbour Towne Marina, 850 NE 3rd St,
STE 213, Dania, FL 33004