

SILVANA — PERINI NAVI



Builder: PERINI NAVI

Year Built: 2008

Model: Cruising Sailboat

Price: PRICE ON APPLICATION

Location: Italy

LOA: 183' 9" (56.01m)

Beam: 37' 9" (11.51m)

Max Draft: 12' 11" (3.94m)

Cruise Speed: 13 Kts. (15 MPH)

Max Speed: 15 Kts. (17 MPH)

Our experienced yacht broker, Andrey Shestakov, will help you choose and buy a yacht that best suits your needs **SILVANA — PERINI NAVI** from our catalogue. Presently, at Shestakov Yacht Sales Inc., we have a wide variety of yachts available on our sale's list. We also work in close contact with all the big yacht manufacturers from all over the world.

If you would like to buy a yacht **SILVANA — PERINI NAVI** or would like help answering any questions concerning purchasing, selling or chartering a yacht, please call **+1(954)274-4435**

TABLE OF CONTENTS

TABLE OF CONTENTS	2
SPECIFICATIONS	3
Overview	3
Basic Information	7
Dimensions	8
Speed, Capacities and Weight	8
Accommodations	8
Hull and Deck Information	8
Engine Information	8
PHOTOS	9
CONTACTS	13
Contact details	13
Telephones	13
Office hours	13
Address	13

SPECIFICATIONS

Overview

MACHINERY

ENGINES: DIESEL	2 x CAT 2,514HP ENGINE MODEL:	C32
ENGINE HOURS:	Port: 2,500hrs (11-Sep-2015) Starboard: 2,500hrs (11-Sep-2015)	
FUEL:	DIESEL	

Generators

GENERATORS: Four (4) Northern Lights Generators: Two 125 KW 380 50 Hz + one 80 KW + one 20 KW emergency generator

GENERATOR HOURS: 3250 hours each (Sep 2015) Electricity

SHORE POWER: One 100kVA shore power connection panel which allows three-phase voltage at 380V AC/50Hz.

BATTERIES: - Two 24V gel battery banks for the main engine starting circuit, located in the engine room.

- Three 24V gel battery banks for the starting circuit of the electrical generators, located in the engine room.

-One 24V– 400A/h emergency gel battery banks located under the fly bridge

-One 24V– 400A/h gel battery banks for R/T station located under the fly bridge

-One 24V – 400A/h (approx.) gel battery bank for 24V services circuit and electronics located in the engine room

-One 24V gel battery banks for emergency generator

Air Conditioning

Condaria WM 150002 (600.000 BTV/h) system

Other Machinery

One (1) Bow Thruster: American Bow Thruster 125 HP. Two (2) Kamewa feathering propellers(1,500mm diam.) Two (2) 12,000lt/24h each Idromar water-makers Heating and air conditioning throughout Jets vacuum sanitary system CO2 engine room fire-fighting system

ACCOMMODATION

Accommodation is for up to 12 guests in a total of 5 five cabins, including two doubles, two twins with pullmans and one convertable double salon, adjacent to the master suite.

Crew accommodation is for up to 12 in a total of 6 cabins **GALLEY & LAUNDRY EQUIPMENT**

Galley

Fridges and freezers of various dimensions and temperatures.

Three Ponsi stainless steel sinks with macerators

One Miele 363 microwave oven

One Nespresso coffee machine

High speed extration vent with filter

One Hatlo GR 36 food warming lamp

Laundry

Two Miele W 5425 industrial washing machines

Two Miele T 5206 drying machines

One Miele iron machine type B866 D

One Foppa Pedretti folding iron board

One standard stainless steel sink

COMMUNICATIONS, NAVIGATION & ENTERTAINMENT EQUIPMENT

Communications Equipment

One (1) FURUNO 2127 VHF in wheelhouse, fly and lazarette + remote in crew mess

32 switchboard

One (1) FURUNO FM 8500 VHF with DSC

One (1) Furuno 2127 VHF on fly bridge

One (1) Ethernet network driven by 3COM Hub

One (1) Thrane&Thrane TT3084A Fleet77 Satcom

One (1) Thrane TT3064A Mini-M standard Satcom

One (1) Felcom 15 GMDSS C Satcom

One (1) Panasonic KXT12

8 incoming lines

Navigation Equipment

Two (2) Furuno FR2107 Black Box type radars

One (1) Plath JUPITER (180mm) magnetic compass

One (1) Furuno NAX-5 Navtex receiver

One (1) NAVTEC Global 3 Epirb + 2 radar transponder

One (1) Plath Navigat X MK1 gyro compass

Two (2) TELULAR SX5E GSM

Three (3) Plath Navipilot V autopilot

Glass cockpit in the wheelhouse, with five (5) colour 19" flat monitors

Two (2) Furuno GP 90 GPS

two (2) colour transfective flat monitors on the Fly Bridge

One (1) Furuno FAX 208 MK2 weather-fax

On each monitor the user may select one of the next sources: Transas Chart 1 with Radar Overlay, Transas Chart 2, Radar 1, Radar 2, CCTV, Monitoring System

One (1) B&G Serie 2000 Hercules windstation complete with 7 FFD's, 8 analogue, and 1 Jumbo

One (1) FURUNO FCV 600L echosounder

One (1) Furuno FA100 AIS

Entertainment Equipment

Saloon

- One (1) Samsung PS50P5H plasma tv with HD system
- One (1) CSC-1205MT turner for PAL/NTSC/SECAM signal
- One (1) Rotel RDV-1060 universal, digital dvd player
- One (1) AMX MAX-MMS-04S digital server with Raid system
- One (1) Linksys WAP54G wireless access point
- One (1) HP iPAQ Pocket PC for audio/video system

Owner suite

- One (1) Samsung LCD LE40M61B HD tv
- One (1) CSC-1205MT turner for PAL/NTSC/SECAM signal
- One (1) Rotel RDV-1060 universal, digital dvd player
- One (1) Linksys WAP54G wireless access point
- One (1) HP iPAQ Pocket PC for audio/video system

Tv Room

- One (1) Samsung LCD LE40M61B HD tv
- One (1) CSC-1205MT turner for PAL/NTSC/SECAM signal
- One (1) NAD L53 amplifier with multizone dvd player
- One (1) Sony playstation 2
- One (1) Linksys WAP54G wireless access point
- One (1) HP iPAQ Pocket PC for audio/video system

Guest Cabin

- One (1) Samsung LCD LE32M61B 32" HD tv
- One (1) CSC-1205MT turner for PAL/NTSC/SECAM signal
- One (1) Linksys WAP54G wireless access point

One (1) HP iPAQ Pocket PC for audio/video system

TENDERS & WATERSPORTS EQUIPMENT

Two (2) Castoldi 21" 260Hp water jet tenders **RIGS & SAILS** Two (2) Perini Navi masts, main 58.8m above DWL, and mizzen 48.26m above DWL

Perini Navi electrical furling gear for genoa and staysails. In-boom furling for main and mizzen.

Sail area: 1560 m²

100% genoa, main, mizzen, and staysail

Thirteen (13) automatic Perini Navi winches

Two (2) self-tailing electric Harken ST 1140 winches(2 speeds)

One (1) self-tailing electric Harken ST 1110 winchRiggarr

SAFETY & SECURITY EQUIPMENT

Four (4) 12-man life rafts

Basic Information

Category: Cruising Sailboat

Model Year: 2008

Year Built: 2008

Country: Italy

Dimensions

LOA: 183' 9" (56.01m)

Beam: 37' 9" (11.51m)

Max Draft: 12' 11" (3.94m)

Speed, Capacities and Weight

Cruise Speed: 13 Kts. (15 MPH)

Max Speed: 15 Kts. (17 MPH)

Max Speed Range: 3600 Kts.

Displacement: 1114000 Pounds

Gross Tonnage: 499 Pounds

Water Capacity: 4490.924884 Gallons

Fuel Capacity: 15586.151068 Gallons

Accommodations

Total Cabins: 5

Crew Cabin: 6

Crew Sleeps: 12

Hull and Deck Information

Hull Material: Aluminum

Hull Color: BLUE

Engine Information

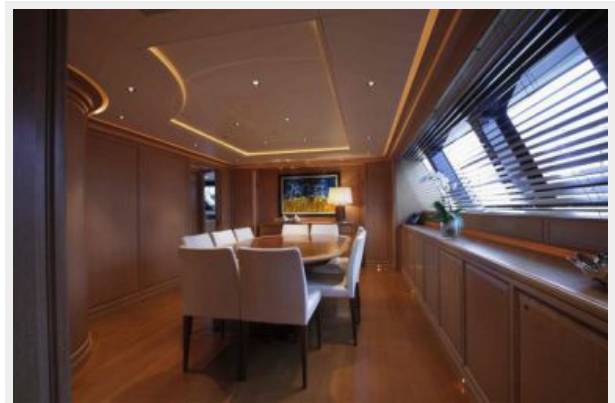
Engines: 2

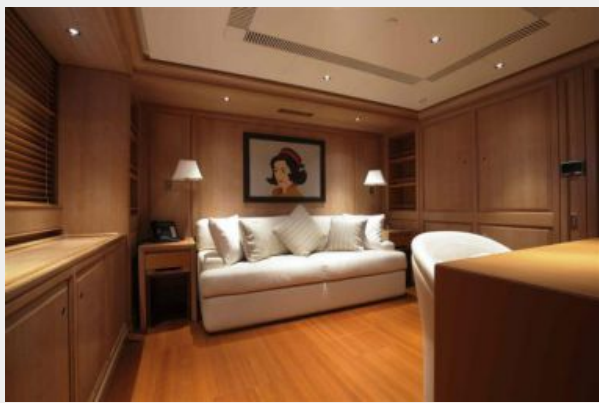
Manufacturer: Caterpillar

Model: C32 DIESEL

Fuel Type: Diesel

PHOTOS









CONTACTS

Andrey Shestakov, leading yacht broker of the sales department of Shestakov Yacht Sales Inc. Shestakov Yacht Sales Inc., the official representative of the Miami/Fort Lauderdale FL headquarters.

Contact details

Email: andrey@shestakovyachtsales.com

Web: shestakovyachtsales.com/en/

Telephones

USA: +1(954)274-4435

Office hours

Monday – Saturday: **9:00 - 21:00** EDT

Sunday: **closed**

Address



Harbour Towne Marina, 850 NE 3rd St,
STE 213, Dania, FL 33004