

SOY AMOR — BENETTI



Builder: BENETTI

Year Built: 2014

Model: Motor Yacht

Price: PRICE ON APPLICATION

Location: France

LOA: 137' 7" (41.93m)

Beam: 29' 9" (9.05m)

Min Draft: 7' 6" (2.28m)

Max Draft: 7' 6" (2.28m)

Cruise Speed: 11 Kts. (13 MPH)

Max Speed: 15 Kts. (17 MPH)

Our experienced yacht broker, Andrey Shestakov, will help you choose and buy a yacht that best suits your needs **SOY AMOR — BENETTI** from our catalogue. Presently, at Shestakov Yacht Sales Inc., we have a wide variety of yachts available on our sale's list. We also work in close contact with all the big yacht manufacturers from all over the world.

If you would like to buy a yacht **SOY AMOR — BENETTI** or would like help answering any questions concerning purchasing, selling or chartering a yacht, please call **+1(954)274-4435**

TABLE OF CONTENTS

TABLE OF CONTENTS	2
SPECIFICATIONS	5
Overview	5
Basic Information	5
Dimensions	5
Speed, Capacities and Weight	5
Accommodations	6
Hull and Deck Information	6
Engine Information	6
DETAILED INFORMATION	7
OVERVIEW	7
Detailed Information	7
Exclusions	17
Disclaimer	17
PHOTOS	18
profile	18
profile	18
profile	18
profile	18
mainsaloon	18
mainsaloon	18
mainsaloon	19
mainsaloon TV	19
lobby-guests-cabins	19
main-saloon-lobby	19
lobby-to-mastercabin	20
doublecabin-bathroom	20
master	20

master	20
master	20
master-bathroom	20
master-bathroom	21
master-dressing	21
master-lobby-dressing	21
double cabin	21
doublecabin-bathroom	22
VIP cabin	22
VIP2-bathroom	22
VIP cabin	22
VIP2-bathroom	23
twin-cabin	23
twin-bathroom	23
staircase-lobby	23
upper-saloon	24
uppersaloon-tv-chimney	24
upper-saloon-dining	24
upper-salon-dining	24
upper-saloon-bar	24
galley	24
galley	25
galley	25
wheelhouse	25
aftdeck	25
aftdeck	25
aftdeck	25
foredeck	26
upper-aft	26

upper-aft	26
upper-aft	26
sundeck	26
sundeck	26
sundeck	27
sundeck-sunloungers-aft	27
sundeck-sunpads-forward	27
sundeck-wetbar-bbq	27
swim-platform-beach	27
swim-beach	27
swim-beach-salon	28
engineroom	28
engineroom	28
engineroom	28
garage	28
garage	28
tender	29
garage-door	29
GA plan	29
CONTACTS	30
Contact details	30
Telephones	30
Office hours	30
Address	30

SPECIFICATIONS

Overview

Featuring a displacement grp hull and superstructure, Soy Amor offers her guests 4 teak decks for absolute relaxation and entertainment. She was built to ABS (American Bureau of Shipping) classification society rules and is MCA Compliant. The yacht is equipped with an ultra-modern stabilization system which reduces roll motion effect and results in a smoother and more enjoyable cruising experience underway. This luxury yacht is also fitted with 'at anchor stabilisers' that work at anchor increasing on-board comfort when the yacht is stationary, particularly in rough waters. Recently launched, the yacht boast exterior concept and design are by Stefano Righini, while the contemporary-styled interiors are by Benetti's technical department. The key features aboard the new 42-metre vessel include: a backlit marble waterfall in the main foyer, a fireplace in the upper saloon, and a garage with side door amidships that frees up space for a large beach area astern.

Basic Information

Category: Motor Yacht

Model Year: 2014

Year Built: 2014

Country: France

Dimensions

LOA: 137' 7" (41.93m)

Beam: 29' 9" (9.05m)

Min Draft: 7' 6" (2.28m)

Max Draft: 7' 6" (2.28m)

Speed, Capacities and Weight

Cruise Speed: 11 Kts. (13 MPH)

Cruise Speed Range: 4000

Max Speed: 15 Kts. (17 MPH)

Max Speed RPM: 2300 Kts.

Displacement: 1029558.76354 Pounds

Water Capacity: 2747.3893408 Gallons

Holding Tank: 3830.494754 Gallons

Fuel Capacity: 16854.1769176 Gallons

Accommodations

Total Cabins: 5

Sleeps: 10

Captain Cabin: True

Crew Cabin: 5

Crew Sleeps: 7

Hull and Deck Information

Hull Material: GRP

Deck Material: Teak

Hull Configuration: Displacement w/
Bulbous Bow

Hull Color: White

Exterior Designer: Righini Design

Interior Designer: Zuretti Interiors Designers

Engine Information

Engines: 2

Manufacturer: Caterpillar

Model: C32

Engine Type: Inboard

Fuel Type: Diesel

DETAILED INFORMATION

OVERVIEW

Featuring a displacement grp hull and superstructure, Soy Amor offers her guests 4 teak decks for absolute relaxation and entertainment. She was built to ABS (American Bureau of Shipping) classification society rules and is MCA Compliant.

The yacht is equipped with an ultra-modern stabilization system which reduces roll motion effect and results in a smoother and more enjoyable cruising experience underway. This luxury yacht is also fitted with 'at anchor stabilisers' that work at anchor increasing on-board comfort when the yacht is stationary, particularly in rough waters.

Recently launched, the yacht boast exterior concept and design are by Stefano Righini, while the contemporary-styled interiors are by Benetti's technical department. The key features aboard the new 42-metre vessel include: a backlit marble waterfall in the main foyer, a fireplace in the upper saloon, and a garage with side door amidships that frees up space for a large beach area astern.

Detailed Information

DECK EQUIPMENT

- 2x Anchors SHHP (Super High Holding Power) 219Kg
- 2x electric foot operated capstans on aft deck
- 3x telescopic retractable stern gangway 5.0 m
- 1x electro hydraulic AISI 316 stainless steel swimming ladder
- Motorized awning on the sun deck, aft of the mast
- 1x 50kg electric type dumb waiter connecting main deck, upper deck and sun deck
- 1x electro hydraulic telescopic aluminium alloy crane w remote control
- Mahogany caprail

AUXILIARY MACHINERY

- **Bow thruster** - VT Naiad Marine VT75 75 kW
- **Stabilisers** - Stabilization at anchor VT Naiad Marine
- Propellers - Two propellers with five fixed blades Benetti design
- 1x electric sea water pump for fire fighting system
- 1x electric sea water pump for bilge system
- 2x dedicated sea water ballast pumps
- 1x emergency bilge motor driven fire pump
- 2x electrical fresh water pumps
- 2x Two electrical hot water pumps

- 2x sea waters cooling pumps
- 1x electric air compressor 250-440 l/min at 6.9 bar
- Hydraulic power pack for the stern doors, the passerelle and the bathing ladder
- 2x water-heating units 250 l capacity
- 2x reverse osmosis water makers with a total nominal capacity of 14,000 liters per day
- 1x water softener
- UV system, carbon filters on fresh water pumps
- Accommodation ventilation and air Conditioning

ELECTRIC EQUIPMENT

Main power system 380 V AC, 50 Hz, 3 ph / 220 V AC, 50 Hz, 1 ph

Generators..... 2 x Kohler 125 kW 380 V, 3 ph, 50 Hz (apr. 1850 hrs)

- 1x emergency battery group of the gel type
- 24 V DC batteries
- 1x battery group for service systems
- Battery chargers
- 25 m shore power supply - 125A on transom and one 125A at bow 125A at garage
- **Night generator** Panda 38 kW (22hrs)

NAVIGATION EQUIPMENT

Bridge integrated navigation/communication system

- LCD monitors and three touch panels
- Radar
- Echosounder
- hart plotter NAVNET 3D, MAXSEA
- LOG
- GPS
- 1x IMO approved 12 kW X-band 4 ft antenna with ARPA and AIS interfaces, S-band radar 30 kw 10ft antenna
- 1x magnetic compass
- 1x gyrocompass comprising of analogic repeater
- 1x wind system with no moving parts and with GPS, air temperature and pressure sensors
- 1x meteo fax
- Autopilot comprising of NFU tiller interface, rudder angle indicator, feedback unit
- 1x VHF class D with distress capabilities
- 1x remote control unit for VHF
- 4x handheld VHF for mooring operation

- One radiotelephone SSB - 150 W with DSC MF
- GSM interface connected to the VOIP system
- V-SAT communication system for voice, fax and data
- Intercom system
- Inmarsat FB 500
- Night vision Flir Voyager 2
- 5 monitors Hatteland

ENTERTAINING EQUIPMENT

Crew mess

- 1x AV client
- 1x CD/DVD player
- 1x sintoamplifier
- 2x speakers 6,5"
- 1x TV LCD 23"
- 1x remote control
- 1x IP telephone
- 1x internet conection
- satellite TV/radio signl
- 1x TVCC control monitor
- 1x client B.E.S.T. with DVD player

Beach area

- 1x audio client
- 1x audio 2.1 amplification system
- 2x marine speakers 8"
- WiFi network coverage

Twin guest cabins

- 1x client B.E.S.T. with DVD player
- 1x sintoamplifier
- 2x speakers 6,5"
- 1x TV LCD 26"
- 1x remote control
- 1x IP telephone
- 1x internet connection
- satellite TV/radio signal
- WiFi network coverage
- domotic functions integrated on remote control

VIP cabins

- 1x client B.E.S.T. with DVD player
- 1x sintoamplifier
- 2x speakers 6.5"
- 1x TV LCD 26"
- 1x remote control
- 1x IP telephone
- 1x internet connection
- satellite TV/radio signal
- WiFi network coverage
- domotic functions integrated on remote control

Crew cabins

- Items to be considered for four cabins
- 1x audio client
- 2x speakers 6.5"
- 1X IP telephone
- 1x IP telephone

Owner's cabin

- 1x client B.E.S.T. with DVD player
- 1x sintoamplifier
- 5x speakers 6.5"
- 1x subwoofer
- 1x TV LCD 42"
- 1x remote control
- 1x IP telephone
- 2x internet connections
- 1x iPod docking station
- Satellite TV/radio signal
- Blu Ray player
- WiFi network coverage, domotic functions integrated on remote control

Galley

- 1x audio client
- 2x speakers 6.5",
- 1x IP telephone
- 1x internet conection
- 1x panel for crew calls

Main saloon

- 1x client B.E.S.T. with DVD player
- 1X sintoamplifier
- 7x speakers 6.5"
- 1x subwoofer
- 1x TV LCD 60"
- 1x remote control

- 1x IP telephone
- 2x internet connections
- 1x iPod docking station
- satellite TV/radio signal
- WiFi network coverage
- Domotic functions integrated on remote control
- Blu Ray player

Main saloon bar

- 2x speakers 6,5" with separate volume control
- WiFi network coverage

External main deck

- 4x marine speakers 8" with separate volume control
- WiFi network coverage

Wheelhouse

- 1x audio client
- 2x speakers 6,5"
- 1x IP telephone
- 1x internet connection

Captain cabin

- 1x AV client
- 1x CD/DVD player
- 1x sintoamplifier
- 2x speakers 6,5"
- 1x TV LCD 23"

- 1x IP telephone
- 1x internet connection
- satellite TV/radio signal
- WiFi network coverage

Sky lounge

- 1x client B.E.S.T. with DVD player
- 1x sintoamplifier
- 5x speakers 6,5"
- 1x subwoofer
- 1x TV LCD 55"
- 1x remote control (high)
- 1x IP telephone
- 2x internet connections
- 1x iPod docking station
- satellite TV/radio signal
- WiFi network coverage
- Domotic functions integrated on remote control
- Blu Ray player

Upper deck dining

- 2x speakers 6,5" with separate volume control
- WiFi network coverage

External upper deck aft

- 4x marine speakers 8" with separate volume control
- WiFi network coverage

External upper deck forward

- 2x marine speakers 8"
- 1x amplifier
- 1x audio socket

Sun deck

- 1x audio client
- 1x sintoamplifier
- 6x marine speakers 8"
- WiFi network coverage
- 1x foldable waterproof TV 42"

Lobby and stairs

- 2x speakers 6,5" with separate volume control

Server rack

- 1x switch managed 24 ports full gigabits
- 1x outdoor AP WiFi AWK-1100
- 1x KVM controller (keyboard, mouse, lcd)
- 1x AVoD storage system 6 Tbytes + AVoD + OAM + YAS server
- 1x LAN server + firewall +data router
- 1x VOIP gateway
- 1x VOIP server
- 1x UPS rack mount
- 1X rack for devices housing
- 1x CCTV server

TV SAT Av Distribution Rack

- 1x antenna + controller
- 1x UPS 700 VA,
- 1x magic switch multiport
- 8x WiFi access points

DOMESTIC EQUIPMENT

Main deck galley/pantry:

- 1x cooking top 90 cm,
- 1x grill top
- 1x exhaust hood
- 1x oven 90 cm
- 1x oven 60 cm
- 1x microwave
- 1x dishwasher
- 1x garbage macerator for the sink
- 1x freezer
- 1x fridge
- 1x trash compactor
- 1x wine cellar undertop type
- 1x fridge drawer
- 1x coffe system

Crew mess:

- 1x microwave
- 1x dishwasher 45 cm
- 1x fridge/freezer

Main saloon bar:

- 1x ice maker
- 1x frigobar

Owner's study:

- 1x frigobar

Guests lobby

- 1x frigobar

Sky lounge bar:

- 1x ice maker
- 1x frigobar
- 1x microwave
- 1x dishwasher

Sun deck area:

- 2x barbecue
- 1x ice maker
- 1x frigobar

Laundry:

- 2x washers
- 2x dryers

Beach area:

- 1x ice maker
- 1x frigobar

SAFETY EQUIPMENT

- 20x life jackets.
- 4x life jackets for children
- Parachute flares and smoke signals
- 2x 20 persons life rafts with hydrostatic release and survival kit (SOLAS approved package A)
- 1x 8 persons life raft on sundeck
- 2x life buoys
- Fire Alarm System
- Fire extinguishing system
- Fire hoses housing
- Fire extinguishers
- Fire hoses, Fireman axe, Fireman suit
- Breathing apparatus
- Firefighting blanket

Exclusions

Owner's personal belongings.

Disclaimer

The Company offers the details of this vessel or yacht in good faith but cannot guarantee or warrant the accuracy of this information nor warrant the condition of the vessel. A buyer should instruct his representatives, agents, or his surveyors, to investigate such details as the buyer desires validated. This vessel or yacht is offered subject to prior sale, price change, or withdrawal without notice.

PHOTOS

profile



profile



profile



profile



mainsaloon



mainsaloon



mainsaloon

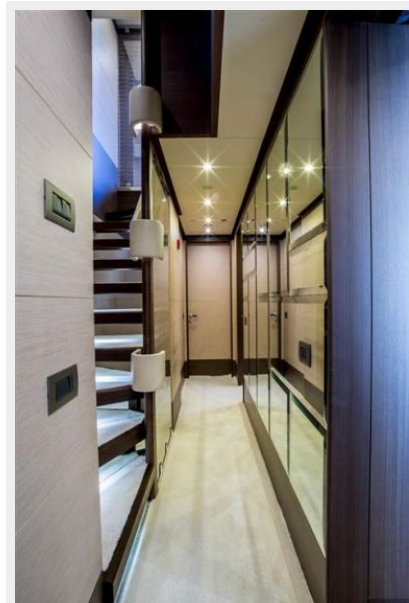


mainsaloon TV



lobby-guests-cabins

main-saloon-lobby



lobby-to-mastercabin



doublecabin-bathroom



master



master



master



master-bathroom



master-bathroom



master-dressing



master-lobby-dressing



double cabin



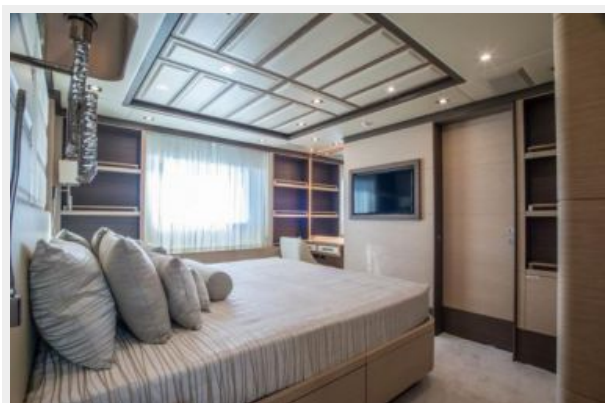
doublecabin-bathroom



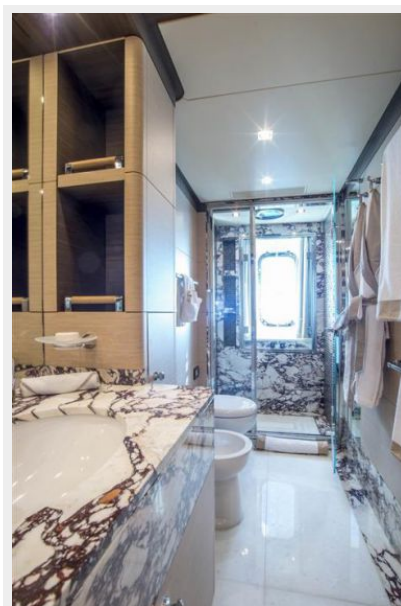
VIP cabin



VIP cabin



VIP2-bathroom



twin-cabin



VIP2-bathroom



twin-bathroom



staircase-lobby



upper-saloon



uppersaloon-tv-chimney



upper-saloon-dining



upper-salon-dining



upper-saloon-bar



galley



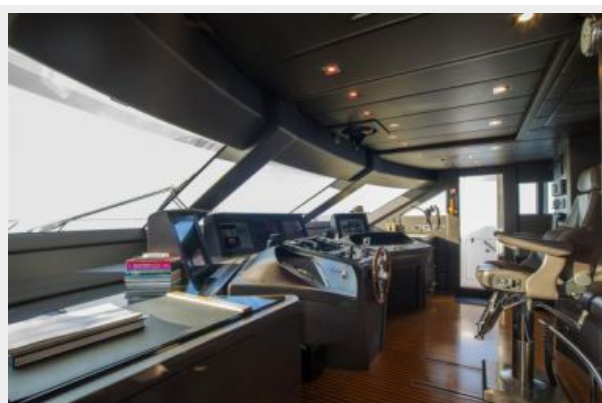
galley



galley



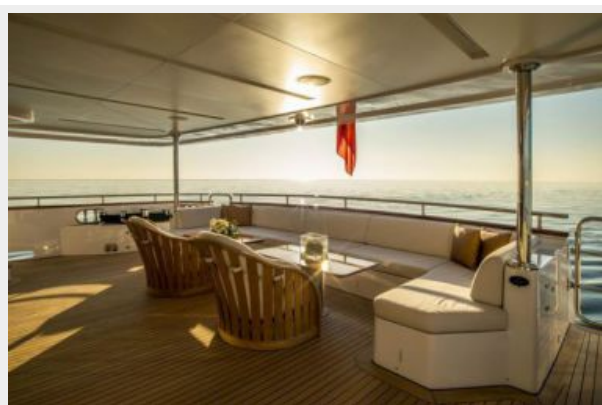
wheelhouse



aftdeck



aftdeck



aftdeck



foredeck



upper-aft



upper-aft



upper-aft



sundeck



sundeck



sundeck



sundeck-sunloungers-aft



sundeck-sunpads-forward



sundeck-wetbar-bbq



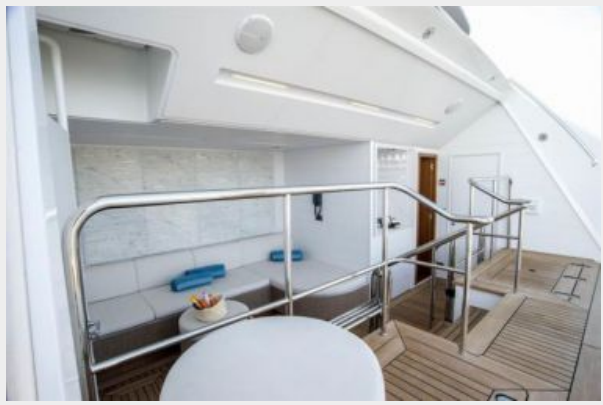
swim-platform-beach



swim-beach



swim-beach-salon



engineroom



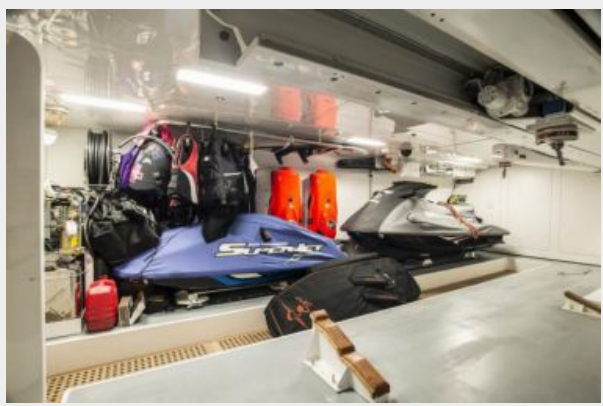
engineroom



engineroom



garage



garage



garage-door



tender



GA plan



CONTACTS

Andrey Shestakov, leading yacht broker of the sales department of Shestakov Yacht Sales Inc. Shestakov Yacht Sales Inc., the official representative of the Miami/Fort Lauderdale FL headquarters.

Contact details

Email: andrey@shestakovyachtsales.com

Web: shestakovyachtsales.com/en/

Telephones

USA: +1(954)274-4435

Office hours

Monday – Saturday: **9:00 - 21:00** EDT

Sunday: **closed**

Address



Harbour Towne Marina, 850 NE 3rd St,
STE 213, Dania, FL 33004