

SOY AMOR — BENETTI



Судостроитель: BENETTI

Год постройки: 2014

Модель: Моторная яхта

Цена: ЦЕНА ЯХТЫ ПО ЗАПРОСУ

Местонахождение: France

Длина общая: 137' 7" (41.93m)

Ширина: 29' 9" (9.05m)

Мин. осадка: 7' 6" (2.28m)

Макс. осадка: 7' 6" (2.28m)

Крейс. скорость: 11 Kts. (13 MPH)

Макс. скорость: 15 Kts. (17 MPH)

Купить **SOY AMOR — BENETTI** а также выбрать подходящую вам яхту из нашего каталога яхт вам поможет опытный яхтенный брокер Андрей Шестаков. На сегодняшний день компания **Shestakov Yacht Sales Inc.** имеет большое количество яхт в собственном списке продаж, а также тесно сотрудничает со всеми крупными яхтенными производителями по всему миру.

Для того чтобы купить яхту **SOY AMOR — BENETTI** а также проконсультироваться по любому вопросу связанному с покупкой, продажей, чартером яхт позвоните по телефону **+7(918)465-66-44**.

ОГЛАВЛЕНИЕ

ОГЛАВЛЕНИЕ	2
ХАРАКТЕРИСТИКИ	5
Обзор	5
Основная информация	5
Размеры	5
Скорость, вместимость и масса	6
Размещение	6
Корпус и палуба	6
Информация о двигателе	6
ПОДРОБНОЕ ОПИСАНИЕ	7
OVERVIEW	7
Detailed Information	7
Исключения	17
Отказ от ответственности	17
ФОТОГРАФИИ	18
profile	18
profile	18
profile	18
profile	18
mainsaloon	18
mainsaloon	18
mainsaloon	19
mainsaloon TV	19
lobby-guests-cabins	19
main-saloon-lobby	19
lobby-to-mastercabin	20
doublecabin-bathroom	20
master	20

master	20
master	20
master-bathroom	20
master-bathroom	21
master-dressing	21
master-lobby-dressing	21
double cabin	21
doublecabin-bathroom	22
VIP cabin	22
VIP2-bathroom	22
VIP cabin	22
VIP2-bathroom	23
twin-cabin	23
twin-bathroom	23
staircase-lobby	23
upper-saloon	24
uppersaloon-tv-chimney	24
upper-saloon-dining	24
upper-salon-dining	24
upper-saloon-bar	24
galley	24
galley	25
galley	25
wheelhouse	25
aftdeck	25
aftdeck	25
aftdeck	25
foredeck	26
upper-aft	26

upper-aft	26
upper-aft	26
sundeck	26
sundeck	26
sundeck	27
sundeck-sunloungers-aft	27
sundeck-sunpads-forward	27
sundeck-wetbar-bbq	27
swim-platform-beach	27
swim-beach	27
swim-beach-salon	28
engineroom	28
engineroom	28
engineroom	28
garage	28
garage	28
tender	29
garage-door	29
GA plan	29
КОНТАКТЫ	30
Контактная информация	30
Телефоны	30
Время работы	30
Адрес	30

ХАРАКТЕРИСТИКИ

Обзор

Featuring a displacement grp hull and superstructure, Soy Amor offers her guests 4 teak decks for absolute relaxation and entertainment. She was built to ABS (American Bureau of Shipping) classification society rules and is MCA Compliant. The yacht is equipped with an ultra-modern stabilization system which reduces roll motion effect and results in a smoother and more enjoyable cruising experience underway. This luxury yacht is also fitted with 'at anchor stabilisers' that work at anchor increasing on-board comfort when the yacht is stationary, particularly in rough waters. Recently launched, the yacht boast exterior concept and design are by Stefano Righini, while the contemporary-styled interiors are by Benetti's technical department. The key features aboard the new 42-metre vessel include: a backlit marble waterfall in the main foyer, a fireplace in the upper saloon, and a garage with side door amidships that frees up space for a large beach area astern.

Основная информация

Тип судна: Моторная яхта

Модельный год: 2014

Год постройки: 2014

Страна: France

Размеры

Длина общая: 137' 7" (41.93m)

Ширина: 29' 9" (9.05m)

Мин. осадка: 7' 6" (2.28m)

Макс. осадка: 7' 6" (2.28m)

Скорость, вместимость и масса

Крейс. скорость: 11 Kts. (13 MPH)

Дальность на крейсерской скорости:
4000

Макс. скорость: 15 Kts. (17 MPH)

Макс. скорость поворота: 2300 Kts.

Водоизмещение: 1029558.76354 Pounds **Вместимость воды:** 2747.3893408
Gallons

Вместимость сточного бака:
3830.494754 Gallons

Объем топливного бака: 16854.1769176
Gallons

Размещение

Всего кают: 5

Спальные места: 10

Каюта капитана: Да

Каюты экипажа: 5

Спальных мест экипажа: 7

Корпус и палуба

Материал корпуса: GRP

Материал палубы: Teak

Комплектация корпуса: Displacement w/
Bulbous Bow

Цвет корпуса: White

Дизайнер экстерьера: Righini Design

Дизайнер интерьера: Zuretti Interiors
Designers

Информация о двигателе

Двигатели: 2

Производитель: Caterpillar

Модель: C32

Тип двигателя: Inboard

Тип топлива: Diesel

ПОДРОБНОЕ ОПИСАНИЕ

OVERVIEW

Featuring a displacement grp hull and superstructure, Soy Amor offers her guests 4 teak decks for absolute relaxation and entertainment. She was built to ABS (American Bureau of Shipping) classification society rules and is MCA Compliant.

The yacht is equipped with an ultra-modern stabilization system which reduces roll motion effect and results in a smoother and more enjoyable cruising experience underway. This luxury yacht is also fitted with 'at anchor stabilisers' that work at anchor increasing on-board comfort when the yacht is stationary, particularly in rough waters.

Recently launched, the yacht boast exterior concept and design are by Stefano Righini, while the contemporary-styled interiors are by Benetti's technical department. The key features aboard the new 42-metre vessel include: a backlit marble waterfall in the main foyer, a fireplace in the upper saloon, and a garage with side door amidships that frees up space for a large beach area astern.

Detailed Information

DECK EQUIPMENT

- 2x Anchors SHHP (Super High Holding Power) 219Kg
- 2x electric foot operated capstans on aft deck
- 3x telescopic retractable stern gangway 5.0 m
- 1x electro hydraulic AISI 316 stainless steel swimming ladder
- Motorized awning on the sun deck, aft of the mast
- 1x 50kg electric type dumb waiter connecting main deck, upper deck and sun deck
- 1x electro hydraulic telescopic aluminium alloy crane w remote control
- Mahogany caprail

AUXILIARY MACHINERY

- **Bow thruster** - VT Naiad Marine VT75 75 kW
- **Stabilisers** - Stabilization at anchor VT Naiad Marine
- Propellers - Two propellers with five fixed blades Benetti design
- 1x electric sea water pump for fire fighting system
- 1x electric sea water pump for bilge system
- 2x dedicated sea water ballast pumps
- 1x emergency bilge motor driven fire pump
- 2x electrical fresh water pumps
- 2x Two electrical hot water pumps

- 2x sea waters cooling pumps
- 1x electric air compressor 250-440 l/min at 6.9 bar
- Hydraulic power pack for the stern doors, the passerelle and the bathing ladder
- 2x water-heating units 250 l capacity
- 2x reverse osmosis water makers with a total nominal capacity of 14,000 liters per day
- 1x water softener
- UV system, carbon filters on fresh water pumps
- Accommodation ventilation and air Conditioning

ELECTRIC EQUIPMENT

Main power system 380 V AC, 50 Hz, 3 ph / 220 V AC, 50 Hz, 1 ph

Generators..... 2 x Kohler 125 kW 380 V, 3 ph, 50 Hz (apr. 1850 hrs)

- 1x emergency battery group of the gel type
- 24 V DC batteries
- 1x battery group for service systems
- Battery chargers
- 25 m shore power supply - 125A on transom and one 125A at bow 125A at garage
- **Night generator** Panda 38 kW (22hrs)

NAVIGATION EQUIPMENT

Bridge integrated navigation/communication system

- LCD monitors and three touch panels
- Radar
- Echosounder
- hart plotter NAVNET 3D, MAXSEA
- LOG
- GPS
- 1x IMO approved 12 kW X-band 4 ft antenna with ARPA and AIS interfaces, S-band radar 30 kw 10ft antenna
- 1x magnetic compass
- 1x gyrocompass comprising of analogic repeater
- 1x wind system with no moving parts and with GPS, air temperature and pressure sensors
- 1x meteo fax
- Autopilot comprising of NFU tiller interface, rudder angle indicator, feedback unit
- 1x VHF class D with distress capabilities
- 1x remote control unit for VHF
- 4x handheld VHF for mooring operation

- One radiotelephone SSB - 150 W with DSC MF
- GSM interface connected to the VOIP system
- V-SAT communication system for voice, fax and data
- Intercom system
- Inmarsat FB 500
- Night vision Flir Voyager 2
- 5 monitors Hatteland

ENTERTAINING EQUIPMENT

Crew mess

- 1x AV client
- 1x CD/DVD player
- 1x sintoamplifier
- 2x speakers 6,5"
- 1x TV LCD 23"
- 1x remote control
- 1x IP telephone
- 1x internet conection
- satellite TV/radio signl
- 1x TVCC control monitor
- 1x client B.E.S.T. with DVD player

Beach area

- 1x audio client
- 1x audio 2.1 amplification system
- 2x marine speakers 8"
- WiFi network coverage

Twin guest cabins

- 1x client B.E.S.T. with DVD player
- 1x sintoamplifier
- 2x speakers 6,5"
- 1x TV LCD 26"
- 1x remote control
- 1x IP telephone
- 1x internet connection
- satellite TV/radio signal
- WiFi network coverage
- domotic functions integrated on remote control

VIP cabins

- 1x client B.E.S.T. with DVD player
- 1x sintoamplifier
- 2x speakers 6.5"
- 1x TV LCD 26"
- 1x remote control
- 1x IP telephone
- 1x internet connection
- satellite TV/radio signal
- WiFi network coverage
- domotic functions integrated on remote control

Crew cabins

- Items to be considered for four cabins
- 1x audio client
- 2x speakers 6.5"
- 1X IP telephone
- 1x IP telephone

Owner's cabin

- 1x client B.E.S.T. with DVD player
- 1x sintoamplifier
- 5x speakers 6.5"
- 1x subwoofer
- 1x TV LCD 42"
- 1x remote control
- 1x IP telephone
- 2x internet connections
- 1x iPod docking station
- Satellite TV/radio signal
- Blu Ray player
- WiFi network coverage, domotic functions integrated on remote control

Galley

- 1x audio client
- 2x speakers 6.5",
- 1x IP telephone
- 1x internet connection
- 1x panel for crew calls

Main saloon

- 1x client B.E.S.T. with DVD player
- 1X sintoamplifier
- 7x speakers 6.5"
- 1x subwoofer
- 1x TV LCD 60"
- 1x remote control

- 1x IP telephone
- 2x internet connections
- 1x iPod docking station
- satellite TV/radio signal
- WiFi network coverage
- Domotic functions integrated on remote control
- Blu Ray player

Main saloon bar

- 2x speakers 6,5" with separate volume control
- WiFi network coverage

External main deck

- 4x marine speakers 8" with separate volume control
- WiFi network coverage

Wheelhouse

- 1x audio client
- 2x speakers 6,5"
- 1x IP telephone
- 1x internet connection

Captain cabin

- 1x AV client
- 1x CD/DVD player
- 1x sintoamplifier
- 2x speakers 6,5"
- 1x TV LCD 23"

- 1x IP telephone
- 1x internet connection
- satellite TV/radio signal
- WiFi network coverage

Sky lounge

- 1x client B.E.S.T. with DVD player
- 1x sintoamplifier
- 5x speakers 6,5"
- 1x subwoofer
- 1x TV LCD 55"
- 1x remote control (high)
- 1x IP telephone
- 2x internet connections
- 1x iPod docking station
- satellite TV/radio signal
- WiFi network coverage
- Domotic functions integrated on remote control
- Blu Ray player

Upper deck dining

- 2x speakers 6,5" with separate volume control
- WiFi network coverage

External upper deck aft

- 4x marine speakers 8" with separate volume control
- WiFi network coverage

External upper deck forward

- 2x marine speakers 8"
- 1x amplifier
- 1x audio socket

Sun deck

- 1x audio client
- 1x sintoamplifier
- 6x marine speakers 8"
- WiFi network coverage
- 1x foldable waterproof TV 42"

Lobby and stairs

- 2x speakers 6,5" with separate volume control

Server rack

- 1x switch managed 24 ports full gigabits
- 1x outdoor AP WiFi AWK-1100
- 1x KVM controller (keyboard, mouse, lcd)
- 1x AVoD storage system 6 Tbytes + AVoD + OAM + YAS server
- 1x LAN server + firewall +data router
- 1x VOIP gateway
- 1x VOIP server
- 1x UPS rack mount
- 1X rack for devices housing
- 1x CCTV server

TV SAT Av Distribution Rack

- 1x antenna + controller
- 1x UPS 700 VA,
- 1x magic switch multiport
- 8x WiFi access points

DOMESTIC EQUIPMENT

Main deck galley/pantry:

- 1x cooking top 90 cm,
- 1x grill top
- 1x exhaust hood
- 1x oven 90 cm
- 1x oven 60 cm
- 1x microwave
- 1x dishwasher
- 1x garbage macerator for the sink
- 1x freezer
- 1x fridge
- 1x trash compactor
- 1x wine cellar undertop type
- 1x fridge drawer
- 1x coffe system

Crew mess:

- 1x microwave
- 1x dishwasher 45 cm
- 1x fridge/freezer

Main saloon bar:

- 1x ice maker
- 1x frigobar

Owner's study:

- 1x frigobar

Guests lobby

- 1x frigobar

Sky lounge bar:

- 1x ice maker
- 1x frigobar
- 1x microwave
- 1x dishwasher

Sun deck area:

- 2x barbecue
- 1x ice maker
- 1x frigobar

Laundry:

- 2x washers
- 2x dryers

Beach area:

- 1x ice maker
- 1x frigobar

SAFETY EQUIPMENT

- 20x life jackets.
- 4x life jackets for children
- Parachute flares and smoke signals
- 2x 20 persons life rafts with hydrostatic release and survival kit (SOLAS approved package A)
- 1x 8 persons life raft on sundeck
- 2x life buoys
- Fire Alarm System
- Fire extinguishing system
- Fire hoses housing
- Fire extinguishers
- Fire hoses, Fireman axe, Fireman suit
- Breathing apparatus
- Firefighting blanket

Исключения

При продаже яхты исключаются личные вещи владельца.

Отказ от ответственности

Компания предоставляет описание судна или яхты добросовестно, но не может гарантировать точность этой информации, а также не ручается за техническое состояние. Покупатель должен проинструктировать своих агентов или оценщиков исследовать представленную информацию более подробно, по собственному желанию. Продажа судна или яхты, изменение цены или снятие с продажи будет происходить без предварительного уведомления.

ФОТОГРАФИИ

profile



profile



profile



profile



mainsaloon



mainsaloon



mainsaloon

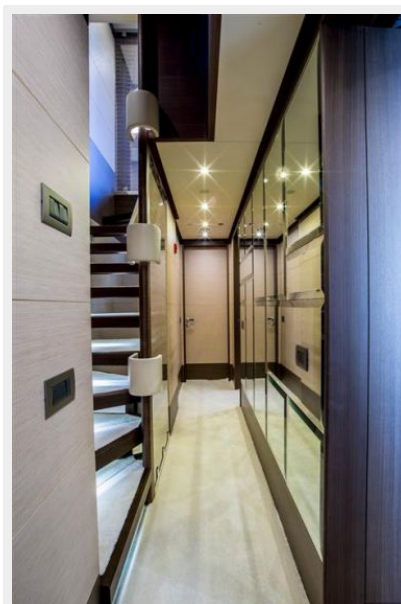


mainsaloon TV



lobby-guests-cabins

main-saloon-lobby



lobby-to-mastercabin



doublecabin-bathroom



master



master



master



master-bathroom



master-bathroom



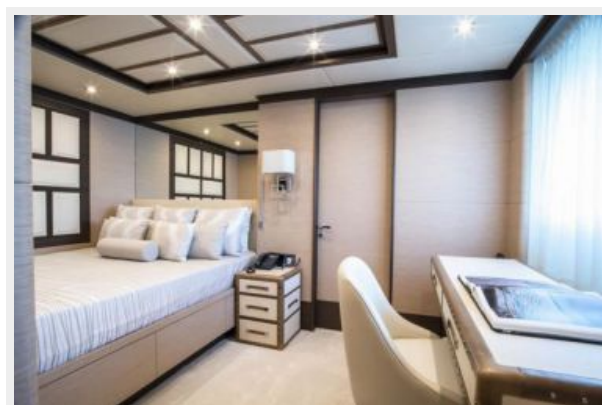
master-dressing



master-lobby-dressing



double cabin



doublecabin-bathroom



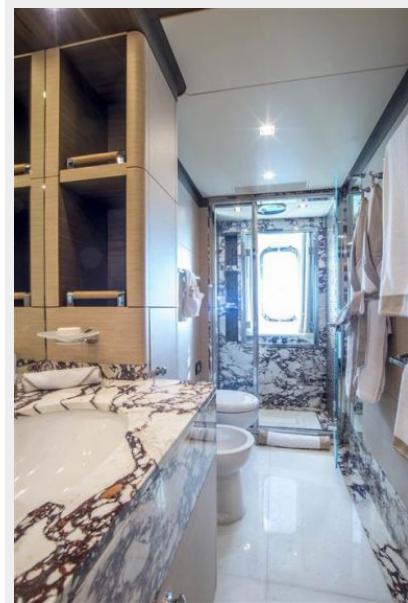
VIP cabin



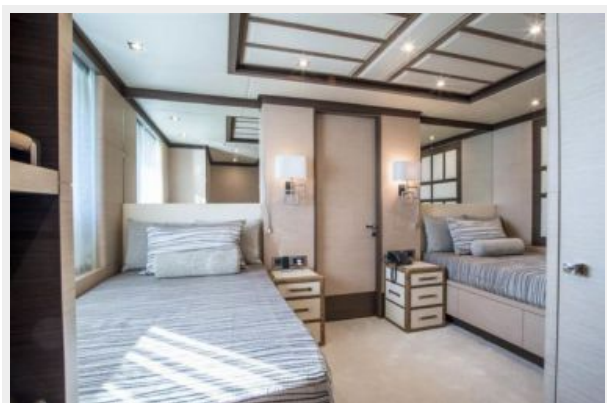
VIP cabin



VIP2-bathroom



twin-cabin



VIP2-bathroom



twin-bathroom



staircase-lobby



upper-saloon



uppersaloon-tv-chimney



upper-saloon-dining



upper-salon-dining



upper-saloon-bar



galley



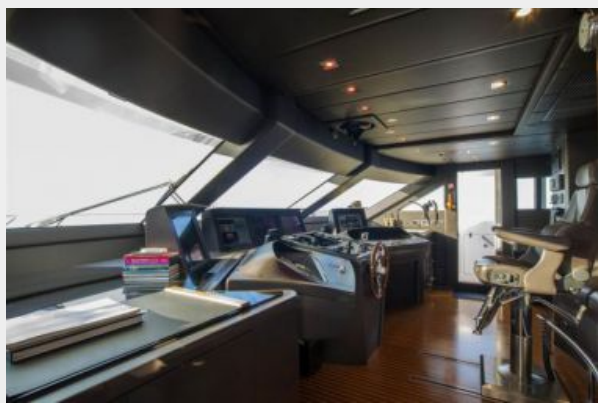
galley



galley



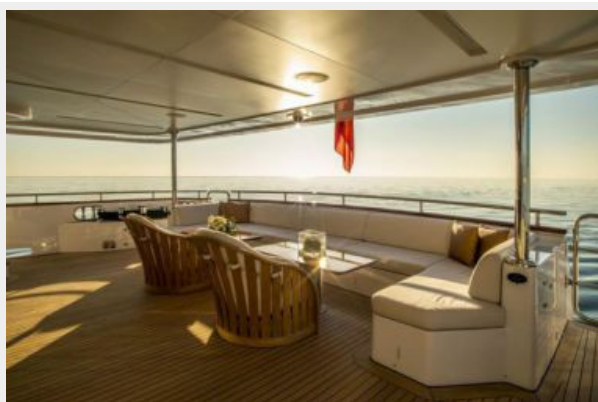
wheelhouse



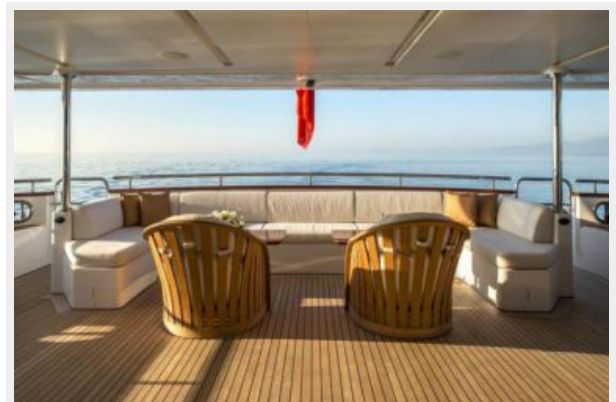
aftdeck



aftdeck



aftdeck



foredeck



upper-aft



upper-aft



upper-aft



sundeck



sundeck



sundeck



sundeck-sunloungers-aft



sundeck-sunpads-forward



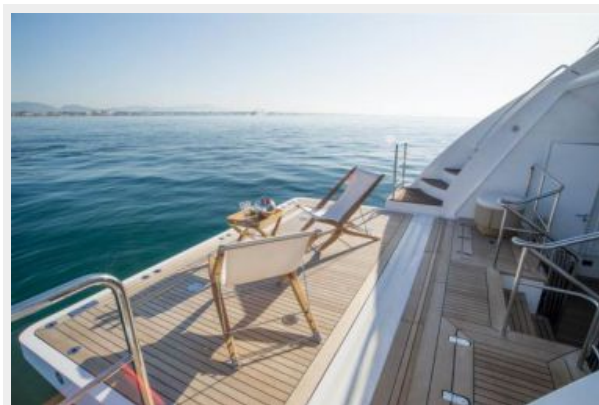
sundeck-wetbar-bbq



swim-platform-beach



swim-beach



swim-beach-salon



engineroom



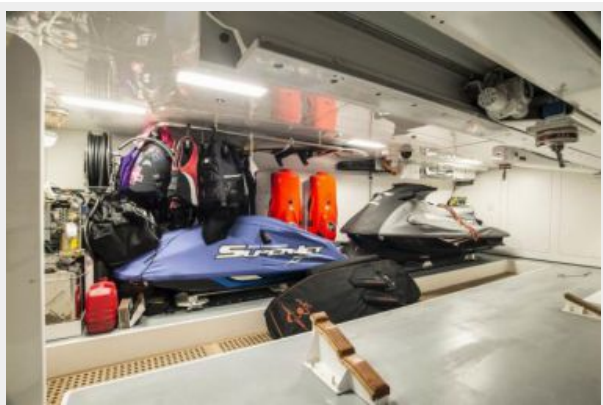
engineroom



engineroom



garage



garage



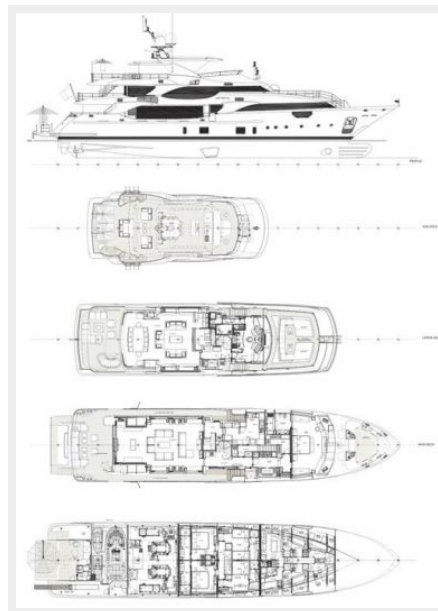
garage-door



tender



GA plan



КОНТАКТЫ

Андрей Шестаков (Andrey Shestakov) – ведущий яхтенный брокер отдела продаж яхт и судов компании Shestakov Yacht Sales Inc. Официальный представитель Shestakov Yacht Sales Inc. для русскоговорящих клиентов в центральном офисе компании в Майами/Форт Лодердейл/Флорида/США.

Контактная информация

Email: andrey@shestakovyachtsales.com

Web: shestakovyachtsales.com

Телефоны

Краснодарский край: **+7(918)465-66-44**

США, Майами, Флорида: **+1(954)274-4435**

Время работы

Понедельник – Суббота: **9:00 - 21:00**
EDT

Воскресенье: **Закрито**

Адрес



Harbour Towne Marina, 850 NE 3rd St,
STE 213, Dania, FL 33004