

SEAHORSE — AMELS



Судостроитель: AMELS

Год постройки: 1999

Модель: Моторная яхта

Цена: **ЦЕНА ЯХТЫ ПО ЗАПРОСУ**

Местонахождение: Монако

Длина общая: 170' 8" (52.00m)

Ширина: 29' 7" (9.00m)

Крейс. скорость: 12 Kts. (14 MPH)

Макс. скорость: 14 Kts. (16 MPH)

Купить **SEAHORSE — AMELS** а также выбрать подходящую вам яхту из нашего каталога яхт вам поможет опытный яхтенный брокер Андрей Шестаков. На сегодняшний день компания **Shestakov Yacht Sales Inc.** имеет большое количество яхт в собственном списке продаж, а также тесно сотрудничает со всеми крупными яхтенными производителями по всему миру.

Для того чтобы купить яхту **SEAHORSE — AMELS** а также проконсультироваться по любому вопросу связанному с покупкой, продажей, чартером яхт позвоните по телефону **+7(918)465-66-44**.

ОГЛАВЛЕНИЕ

ОГЛАВЛЕНИЕ	2
ХАРАКТЕРИСТИКИ	5
Обзор	5
Основная информация	5
Размеры	5
Скорость, вместимость и масса	5
Размещение	6
Корпус и палуба	6
Информация о двигателе	6
ПОДРОБНОЕ ОПИСАНИЕ	7
MAIN CHARACTERISTICS	7
MACHINERY	7
AUXILIARY MACHINERY & ELECTRICAL SYSTEM	7
TANKAGE (APPROXIMATE)	7
ANCILLARY EQUIPMENT	7
SAFETY & SECURITY EQUIPMENT	8
SATELLITE & GMDSS	8
NAVIGATION EQUIPMENT	9
DECK EQUIPMENT	9
AUDIOVISUAL ENTERTAINMENT SYSTEMS	9
OFFICE EQUIPMENT	9
DOMESTIC EQUIPMENT	10
OTHER EQUIPMENT	10
TENDERS & WATERSPORTS EQUIPMENT	10
ACCOMMODATION	10
Исключения	11
Отказ от ответственности	11
ФОТОГРАФИИ	12

Seahorse - Running	12
Seahorse - Running	12
Seahorse - Running	12
Seahorse - Sun Deck	12
Seahorse - Jacuzzi	12
Seahorse - Sun Deck	12
Seahorse - Sun Deck	13
Seahorse - Aft Deck Dining	13
Seahorse - Aft Deck	13
Seahorse - Upper Aft Deck	13
Seahorse - Saloon	13
Seahorse - Saloon	13
Seahorse - Saloon	14
Seahorse - Upper Saloon	14
Seahorse - Master Stateroom	14
Seahorse - Master Stateroom	14
Seahorse - Master Stateroom	14
Seahorse - Master Stateroom	14
Seahorse - Master Stateroom	15
Seahorse - Master Stateroom	15
Seahorse - Master Stateroom	15
Seahorse - Master Stateroom	15
Seahorse - Master Stateroom	15
Seahorse - VIP Cabin	15
Seahorse - VIP Cabin	15
Seahorse - Layout	16
Seahorse - Twin Cabin	16
КОНТАКТЫ	17
Контактная информация	17
Телефоны	17

Время работы	17
Адрес	17

ХАРАКТЕРИСТИКИ

Обзор

Seahorse was built by Amels Holland B.V. in 1999 and is part of the successful semi-production series called "Tigre d'Or", initially at 50 meters and then at 52 meters. In winter 2016, she went through a five-month major refit including interior and exterior styling, new tenders and jet skis, installation of brand new Quantum Zero Speed Stabilizers amongst many technical upgrades. Seahorse is completely refitted, fully certified and crewed, and absolute turnkey yacht!

Основная информация

Тип судна: Моторная яхта

Модельный год: 1999

Год постройки: 1999

Год обновления: 2016

Страна: Монако

Размеры

Длина общая: 170' 8" (52.00m)

Длина по ватерлинии: 150' 5" (45.83m)

Ширина: 29' 7" (9.00m)

Скорость, вместимость и масса

Крейс. скорость: 12 Kts. (14 MPH)

Крейсерская скорость поворота: 1500 Kts.

Дальность на крейсерской скорости: 6800

Макс. скорость: 14 Kts. (16 MPH)

Вместимость воды: 4623.01091 Gallons

Объем топливного бака: 119100.120439836 Gallons

Расход топлива: 55.47613092 Gallons

Размещение

Всего кают: 6

Всего коек: 8

Спальные места: 11

Каюта капитана: Да

Койки экипажа: 12

Спальных мест экипажа: 12

Корпус и палуба

Материал корпуса: Steel

Дизайнер экстерьера: Amels

Дизайнер интерьера: Terence Disdale
Design

Информация о двигателе

Двигатели: 2

Производитель: Cummins

Тип топлива: Diesel

ПОДРОБНОЕ ОПИСАНИЕ

MAIN CHARACTERISTICS

TYPE: Twin Screw Diesel Yacht LENGTH O.A.: 170.61ft (52.00m) LENGTH W.L.: 152.57ft (45.83m) BEAM: 29.53ft (9.00m) DRAFT (half load):10.17ft (3.20m) GROSS TONNAGE: 609 NET TONNAGE: 182 DISPLACEMENT: 590.40 YEAR BUILT: 1999 (refit 2006/7 – 2011 – 2012 – 2013 - 2015/16) BUILDER & NAVAL ARCHITECT: Amels Holland B.V. at Makkum, Holland STYLING: Terence Disdale Design, London INTERIOR DESIGNER: Terence Disdale Design, London (Interior refurbished 2007, H2 Design) CONSTRUCTION: Welded Steel Hull, Aluminium Superstructure, Teak Laid Decks CLASSIFICATION: Lloyds + 100A1 SSC YACHT (P) MONO + LMC, RINA MLC /ISM /ISPS

MACHINERY

MAIN ENGINES: 2 x 1,200hp Cummins (Holland) 12 cylinder turbo charged diesel engines type KTA 38 M2 Air starting GEAR BOXES: 2 x 4.45:1 Reintjes reverse reduction gear boxes type WAF 541 SHAFTS & PROPELLERS: 2 x Lips fixed pitch, 5 bladed propellers, Stainless steel propeller shafts SPEEDS & FUEL: Economical speed about 11 knots (at 1,200rpm) CONSUMPTIONS: Cruising speed about 12 knots (at 1,500 rpm) for a fuel consumption of about 210 litres per hour including one generator running; Maximum speed about 14 knots for a fuel consumption of about 270 litres per hour including one generator running RANGE: 6,800 NM approx. at 12 knots

AUXILIARY MACHINERY & ELECTRICAL SYSTEM

GENERATORS: 2 x Cat C9 (6Cyl) 162kw, Gen-Sets overhauled by CAT Pantropic Florida ALTERNATORS: PON CAT Denmark ELECTRICITY: 380v AC 3 phase 50 Hz, 220v AC single phase 50Hz 4 wire with neutral earth 24v DC SHORE POWER: 415/380v AC 3 phase 50 Hz 135 Amps BATTERIES: 24v DC Systems, Gel batteries with Mastervolt chargers

TANKAGE (APPROXIMATE)

FUEL: 119,100 litres (full capacity) WATER: 17,500 litres (4,630 US gallons) WATERMAKERS: 2 x HEM 30 Frame 1 type producing about, 15,000 litres per day LUB OIL: 2,170 litres (574.07 US gallons) DIRTY LUB OIL: 1,960 litres (518.50 US gallons) BILGE WATER TANK: 5200 litres (1386 US gallons) GREY WATER: 22,000 litres (5,820 US gallons) BLACK WATER: 5,450 litres (1,415 US gallons)

ANCILLARY EQUIPMENT

STEERING SYSTEM: Rolls Royce Marine Germany RUDDER ANGLE INDICATOR: Tenfjord rudder angle indicator BOW THRUSTER: ZF Marine Germany STABILIZERS: Quantum QC-1800 HD Zero Speed stabilizers FUEL FILTERS: Separ Coulescer type 361/1 fuel filters OIL/WATER SEPARATOR: Fleet Guard Bilge Boy 15 ppm oil content alarm MCA & US COAST GUARD APPROVED FIRE/BILGE PUMP: 2 x Stork FRE 50-205 fire/bilge pumps driven by 11 kw electric motors BOILERS: 2 x 12kw ACV electric boilers SEWAGE TREATMENT: Hamann Wassertechnik Chlorinator sewage treatment system (US Coast Guard approved) WC's: 14 x Evac UT 90 vacuum toilets, 5 x bidets, 2 x Hamann vacuum Pumps AIRCONDITIONING: Marine Air Systems Air Conditioning with 3 chilled water units (185000 BTU cooling capacity each), 4 x Hermetic compressors per chiller unit, Individual fan coil units for each room each fitted with electric air heater, 2 x Fresh Air Make up Units HUG FILTER SYSTEM: Nauticlean regeneration filter for generators.

SAFETY & SECURITY EQUIPMENT

SAFETY 6 x Watertight bulkheads 3 x Tebul hydraulic sliding watertight doors 25 x Immersion suits 1 x Ships towing rope 4 x Rocket Line throwing appliances 2 x Jotron 9 GHz SART 1 x JoTron type 60s 406Mhz Epirb 4 x 16 man RFD davit launched/throw overboard inflatable liferafts in glassfibre valises 8 x Lifebuoys (incl. 2 with lifelines, 2 with lights attached, 2 with Smoke/Light) 1 x Aldis Lamp 1 x Air Horn with Automatic Signal Control 1 x BNWSA 1 x LRIT 1 x Purplefinder D SASMK2 FIRE FIGHTING Engine Room Ajax Fixed automatic CO2 installation Galley Hood Fixed CO2 installation Seawater sprinkler system throughout 3 x Breathing apparatus with fireman's outfits Fire fighting Ring Main with 12 hydrants, hoses and nozzels Portable Fire Extinguishers ALARMS TYCO MX T2000 Fire alarm system Simac Deltamacs CSI 8506 Central alarm system 127 channels used for UMS system SECURITY Panasonic WJ-410 closed circuit security television (CCTV) system with 12 cameras with motion detection (cameras located - port & starboard side-decks, aft deck and engine room and mast) 3 x CCTV monitor screens located in wheelhouse and crews' mess room (each screen can be split into 6 to show pictures from all 6 cameras) Alarms on escape doors Coded locks on Port and Starboard entrance doors

SATELLITE & GMDSS

SATCOM 1 x Sailor Inmarsat C type H2096C 1 x Fleet Broad Band 150 with hand set 1 x 4009-33 Sea Tel with 16 watt BUC 1 x iDirect x5 operating OPEN AMIP for Auto Beam Switching 1 x Cisco Voice Gateway with 2 Port Analog FXS Ports 1 x DAC 2202 Sea Tel Controller for VSAT 2 x DAC 2202 Sea Tel Controller for Dual TVRO 2 x Sea Tel 4004 with Euro Quad LNB 1 x RF Switch for Dual Sea Tel TVRO CELLULAR SYSTEM: 1 x Panasonic PDA-100 PABX for Ships Voice VHF RADIOTELEPHONES: 2 x Sailor VHF radiotelephones type RT 2048 each with Sailor Compact VHF Digital Selective4 Calling (DSC) unit type RM 2042 3 x handheld Tron VHF radiotelephones (repeaters in crew mess) 10 x VHF Marine portable IC-M87 5W 97 Radios UHF RADIOTELEPHONES: 2 x Motorola Radius GM900 UHF radiotelephone SSB RADIOTELEPHONE: 1 x MF/HF SSB Telex Transreceiver (instead of radiotelephone)

WATCHKEEPING RECEIVER: Sailor R01 2182 Khz watchkeeping receiver TELEPHONE EXCHANGE Panasonic Digital Super Hybrid telephone exchange model TD 1232E, GSM, Fleet and shoreline facilities INTERCOM SYSTEM: Phontech Command Intercom System 3030

NAVIGATION EQUIPMENT

MAGNETIC COMPASS: 1 x Jupiter class 3 magnetic compass GYRO COMPASS: 2 x Navigat X MK2 AUTOMATIC PILOT: Sperry Navipilot 4000 LOG: Sperry Naviknot ECHO SOUNDER: 2 x Furuno echo sounder type FCV 582 with graphic display and 2 transducers RADAR: 1 x JRC Type JMA - 5332 – 12 – S Band; 1 x JRC Type JMA - 5322 – 7 – X Band GPS: 2 x Furuno GP 170 DUAL ECDIS SYSTEM: 2 x Transas Navisailor 4000 NAVTEX: 1 x JRC NRC 300A Navtex Receiver WIND INSTRUMENTS: 1 x Girouette Anemometre DISPLAYS: 4 x Hatteland 26" widescreen

DECK EQUIPMENT

ANCHOR WINDLASS: Christian Steen electric (380v 3 phase) anchor windlass with 2 cable gypsies and 2 warping drums AFT WARPING CAPSTANS: 2 x Christian Steen electric (380v 3 phase) aft warping capstans (2 directional) GROUND TACKLE: Anchors - 2 x Stainless Manson (360 kg) bow anchors Chains - 5 shackles (450ft/137.15 metres) both port & starboard 22mm stud-linked galvanised anchor chain type U2 BOAT CRANE & DAVITS: 2 x Yacht Tec (Aquacrane) boat cranes (one on fore deck and one on boat deck) (2,000kg lifting capacity each) MCA approved for launching rescue boat. Includes 24v DC emergency power system PASSERELLE: Aljo hydraulic (retractable) Mediterranean passerelle SIDE BOARDING GANGWAY: Multiplex Ultralight Composite Gangway 4,2m SWIMMING PLATFORM: Integral swimming platform with shower SEARCHLIGHT: Sanshin S.D. remotely operated seachlight AWNING: Removable awning on sundeck Removable awning on bridge deck aft

AUDIOVISUAL ENTERTAINMENT SYSTEMS

Flat screen TVs in all guest areas 3 x iTunes Media Servers 10 x Apple TV 10 x Crestron Processors for AV control 10 x RTI back up remote controllers 10 x Apple iPads for primary AV controls

OFFICE EQUIPMENT

IT: 1 x Kerio 3130 Firewall 2 x Cisco Catalyst PoE 48 port 2960x switches 2 x Ruckus Zone Directors 1 x Synology Network Storage for time machine and file sharing 1 x Cisco 1900 Router 12 x Ruckus Zone flex access points operating A/C/N 1 x Dell Server Running Idea Software for ships inventory 2 x Smart Power rails for remote reboot 2 x 1.5 Kva Full dual conversion UPS 1 x KVM console with selector switch 3 x Mac Pro for Officer desktop 1 x Crew Mac Air 1 x Canon

Printer for Chief Engineer 1 x Konica Minolta Printer for Chief Mate MODEMS: 2 x 3G/4G Digi Modem with Dual SIM 4 x External antennas for MIMO 2 x GSM Modems for 3G Voice lines 2 x GSM antennas for dual GSM Modem

DOMESTIC EQUIPMENT

MAIN GALLEY: 1 x Cooktec Induction Cooktop 1 x Roband deep fryer 1 x Rational oven 1 x Hobart fast wash dish washer 1 x Zanussi SL/E 901 eye level Griddle Salamander 1 x Canopy Hood stainless steel 2 x Miele small stores fridge 1 x Rational ClimaPlus Combi CPC Steamer/ convection oven with griddle above Double stainless steel sink unit 1 x food lift/ dumb waiter (100kg capacity) Fresh Filtered water outlet LAUNDRY: 1 x Tefal steamer / ironing machine 3 x Miele PT 7136 Dryers (10kg) 3 x Miele PW 6065 Washing machines (10kg) 1 x stainless steel sink unit

OTHER EQUIPMENT

PANTRY: 1 x Miele refrigerator (3/4 height) 1 x Miele professional type G8050 dishwasher 1 x Hoshizaki Ice maker 1 x Jura Impriza Coffee machine SUNDECK: 1 x Hoshizaki IM 21CNE icemaker 1 x Tepanjaki plate Miele 1 x BBQ grill Miele 1 x Draw Fridge Frigonautica 1 x Sink BRIDGE DECK AFT: 1 x Draw Fridge Frigonautica AFT PEAK: 1 x Liebherr Garbage refrigerator 1 x Brown 1055 Refuse Compactor MAIN DECK BAR: 1 x Vitrifrigo C-39 refrigerator Small stainless steel sink unit LOWER DECK: 1 x Fridina walk in fridge/freezer 2 x Liebherr wine refrigerators 1 x Miele under the counter refrigerator (crew mess room) JACUZZI SPA POOL: Sundeck SHIP'S SAFE: 1 x Ships' safe in captain's cabin 1 x Ship's safe in owner's cabin (gun safe)

TENDERS & WATERSPORTS EQUIPMENT

TENDERS Ribeye Prime six19 tender with 150 hp outboard engine Castoldi Jet JT 19 RB Solas tender WATER SPORTS EQUIPMENT 2x SeaDoo Jets skis 3 seater 2 Inflatable Kayaks 2 x Seabob F5S Underwater Jetski Sports stuff super Mabel 3 rider (Inflatable Biscuit) Hyperlite wakeboard 54" plus bindings Connelly Cayman 67" skis Master line 58" kids skis Ronix wakeskate 42" Hyperlite broadcast 5'4" wakesurfer Inflatable island Waterski helmets (2x s,m,l) Mask and snorkel (full set, s, m, l) Fins (full set, various sizes) Bouyancy aids (full set, various sizes) Misc. balls and inflatable for youngsters

ACCOMMODATION

OWNER: 1 x Double Owner's Cabin with bathroom, dressing room, lounge area and office area en suite GUESTS: 2 x Double Cabins with bathrooms and dressing areas en suite. These 2 cabins can be "opened up" to create one VIP suite with 1 double bed, large settee and 2 x en

suite bathrooms 2 x Twin cabins with shower room en suite 1 x guest/children cabin on the main deck level with shower room en suite CREW: Captain's Double Cabin with shower room en suite 6 x Twin Cabins with shower rooms en suite

Исключения

При продаже яхты исключаются личные вещи владельца.

Отказ от ответственности

Компания предоставляет описание судна или яхты добросовестно, но не может гарантировать точность этой информации, а также не ручается за техническое состояние. Покупатель должен проинструктировать своих агентов или оценщиков исследовать представленную информацию более подробно, по собственному желанию. Продажа судна или яхты, изменение цены или снятие с продажи будет происходить без предварительного уведомления.

ФОТОГРАФИИ

Seahorse - Running



Seahorse - Running



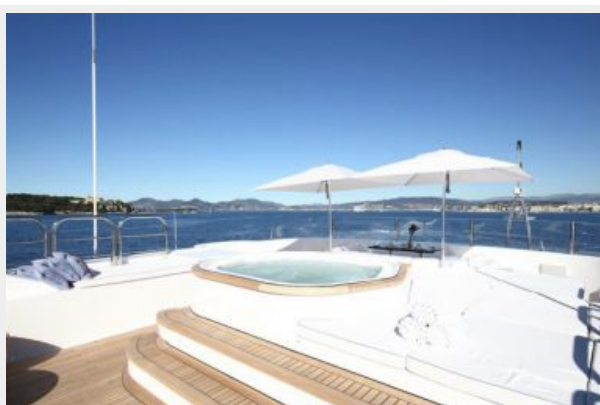
Seahorse - Running



Seahorse - Sun Deck



Seahorse - Jacuzzi



Seahorse - Sun Deck



Seahorse - Sun Deck



Seahorse - Aft Deck Dining



Seahorse - Upper Aft Deck



Seahorse - Aft Deck



Seahorse - Saloon



Seahorse - Saloon



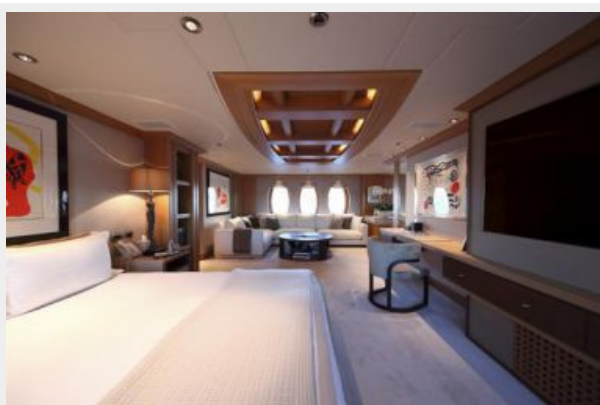
Seahorse - Saloon



Seahorse - Upper Saloon



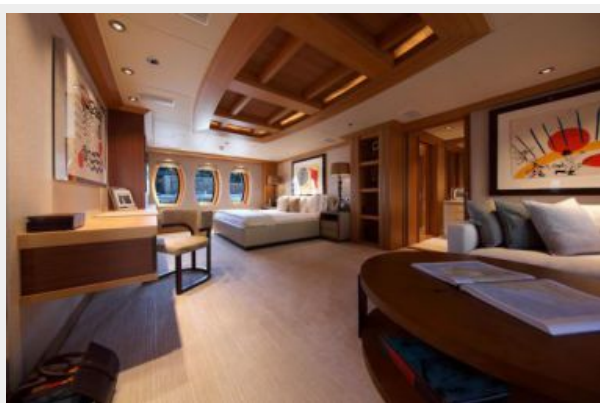
Seahorse - Master Stateroom



Seahorse - Master Stateroom



Seahorse - Master Stateroom



Seahorse - Master Stateroom



Seahorse - Master Stateroom



Seahorse - Master Stateroom



Seahorse - Master Stateroom



Seahorse - Master Stateroom



Seahorse - VIP Cabin



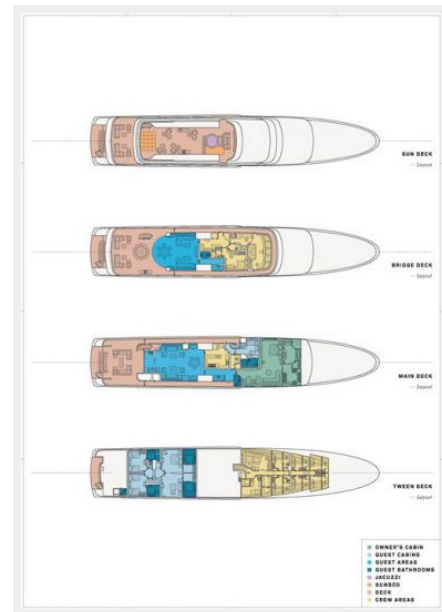
Seahorse - VIP Cabin



Seahorse - Twin Cabin



Seahorse - Layout



КОНТАКТЫ

Андрей Шестаков (Andrey Shestakov) – ведущий яхтенный брокер отдела продаж яхт и судов компании Shestakov Yacht Sales Inc. Официальный представитель Shestakov Yacht Sales Inc. для русскоговорящих клиентов в центральном офисе компании в Майами/Форт Лодердейл/Флорида/США.

Контактная информация

Email: andrey@shestakovyachtsales.com

Web: shestakovyachtsales.com

Телефоны

Краснодарский край: **+7(918)465-66-44**

США, Майами, Флорида: **+1(954)274-4435**

Время работы

Понедельник – Суббота: **9:00 - 21:00**
EDT

Воскресенье: **Закрито**

Адрес



Harbour Towne Marina, 850 NE 3rd St,
STE 213, Dania, FL 33004