

## SERENITA — OFFSHORE



**Судостроитель:** OFFSHORE

**Год постройки:** 2006

**Модель:** Моторная яхта

**Цена:** **ЦЕНА ЯХТЫ ПО ЗАПРОСУ**

**Местонахождение:** United States

**Длина общая:** 72' 0" (21.95m)

**Ширина:** 19' 3" (5.87m)

**Макс. осадка:** 5' 9" (1.75m)

**Крейс. скорость:** 17 Kts. (20 MPH)

**Макс. скорость:** 22 Kts. (25 MPH)

Купить **SERENITA — OFFSHORE** а также выбрать подходящую вам яхту из нашего каталога яхт вам поможет опытный яхтенный брокер Андрей Шестаков. На сегодняшний день компания **Shestakov Yacht Sales Inc.** имеет большое количество яхт в собственном списке продаж, а также тесно сотрудничает со всеми крупными яхтенными производителями по всему миру.

Для того чтобы купить яхту **SERENITA — OFFSHORE** а также проконсультироваться по любому вопросу связанному с покупкой, продажей, чартером яхт позвоните по телефону **+7(918)465-66-44**.

# ОГЛАВЛЕНИЕ

ОГЛАВЛЕНИЕ	2
ХАРАКТЕРИСТИКИ	5
Обзор	5
Основная информация	5
Размеры	5
Скорость, вместимость и масса	5
Размещение	6
Корпус и палуба	6
ПОДРОБНОЕ ОПИСАНИЕ	7
Remarks	7
Hull Design and Construction	7
Electrical System	8
Propulsion System	9
Equipment	9
Electronics	9
Main Deck	10
Cockpit	10
Flybridge	10
Pilothouse	11
Accommodations	11
Salon	11
Galley	12
Master Stateroom	12
Forward VIP Stateroom	12
Forward Head	13
Mid Guest Stateroom	13
Crew Cabin and Head	13
Lazarette	13

Исключения	14
Отказ от ответственности	14
ФОТОГРАФИИ	15
Main Profile	15
Starboard 3	15
Profile "SERENITA"	15
Port Side Profile	15
Port Side Profile	15
Aft Deck	15
Main Salon	16
Main Salon	16
Main Salon	16
Main Salon	16
Full Beam Master Stateroom	16
Master Head	16
Forward Guest Stateroom	17
Guest Stateroom	17
Laundry	17
Guest Head	17
Pilothouse Helm	17
Pilothouse Helm	17
Pilothouse	18
Stairs to Flybridge	18
Flybridge Helm	18
Flybrige Grill	18
Flybridge	19
Tender	19
Crew's Quarters	19
Crew's Quarters	19

---

Standup Engine Room	19
Engine Room	19
Aft Deck Controls	20
Aft Deck	20
Aft Deck	20
КОНТАКТЫ	21
Контактная информация	21
Телефоны	21
Время работы	21
Адрес	21

# ХАРАКТЕРИСТИКИ

## Обзор

Offshore's 72' Pilothouse is a proven winner. This sea kindly yacht incorporates a fresh contemporary silhouette with all the function and smooth ride expected of a William Crealock designed hull.

Thoughtful details, highest quality materials and the finest level of craftsmanship define this yacht. This magnificent 72' provides the owner and his guest with three spacious guest staterooms, separated aft crew cabin with two bunks, crew head and galley. In addition, another fantastic feature of this 72 is the walk in air conditioned engine room.

## Основная информация

<b>Тип судна:</b> Моторная яхта	<b>Модельный год:</b> 2006
<b>Год постройки:</b> 2006	<b>Страна:</b> United States
<b>Верх:</b> Open	<b>Открытая палуба мостика:</b> Да
<b>Кубрик:</b> Да	

## Размеры

<b>Длина общая:</b> 72' 0" (21.95m)	<b>Ширина:</b> 19' 3" (5.87m)
<b>Макс. осадка:</b> 5' 9" (1.75m)	

## Скорость, вместимость и масса

<b>Крейс. скорость:</b> 17 Kts. (20 MPH)	<b>Макс. скорость:</b> 22 Kts. (25 MPH)
<b>Водоизмещение:</b> 118200 Pounds	<b>Чистый вес:</b> 11820 Pounds
<b>Вместимость воды:</b> 465 Gallons	<b>Вместимость сточного бака:</b> 240 Gallons
<b>Объем топливного бака:</b> 2150 Gallons	

## Размещение

---

**Всего кают:** 3

**Спальные места:** 6

**Всего ком. состава:** 3

**Каюты экипажа:** 1

**Койки экипажа:** 2

**Комм. состав экипажа:** 1

## Корпус и палуба

---

**Материал корпуса:** Fiberglass

**Материал палубы:** Fiberglass

**Комплектация корпуса:** Semi-Displacement

**Дизайнер корпуса:** William Crealock

# ПОДРОБНОЕ ОПИСАНИЕ

## Remarks

Fresh bottom paint - June 2018 2000 hour services completed

Profile photos by: © Steven Pavlish -

## Hull Design and Construction

- Hand-laminated FRP utilizing only bi- & uni-directional material, vacuum bagged Core-Cell solid laminate below waterline with high ISO & vinylester resins
- Full-length keel increasing directional stability and propeller protection
- Putty coated bilges for smooth finish
- Port and starboard hull doors for convenient access
- Port lights recessed in hull sides for protection
- Generous flair at bow sections
- Raised chine
- Integral swim platform
- Keel extension for propeller protection
- Sealed bow compartment (crash bulkhead) with watertight hatch
- Prop pockets to reduce propeller draft
- Northern Lights 20kw diesel generator, 1400 hours, 24v start w/Whisper Sound
- 25kw Northern Lights generator with 1500 hours
- Welded stainless steel engine beds (electro polished)
- (3) Marine grade aluminum fuel tanks
- Fuel manifold system for supply & return management
- Sight gauges (marine grade w/protective guard) at fwd bulkhead
- Marine grade sea cocks for through hull skin fitting
- Groco sea strainers at all raw water intakes
- Main seawater intakes plumbed for emergency bilge pump
- Dual Racor marine filter system with vacuum gauge for single Racor marine filter system for generators
- Tank level indicator systems for fuel, water and waste tanks
- Six high output 24V bilge pumps w/ Ultra automatic switches & high water alarms
- High output Whale 40 manual bilge pump
- Delta -T engine air intake system minimizing water ingestion, recessed & color matches to exterior
- (4) Delta -T 11" 120v/AC engine room blowers
- Engine room 24 V/DC lights X 4pcs and 120v/AC fluorescent lamps X PCS
- Engine room video camera system (2 cameras)
- Fire Boy MA 1800 automatic fire extinguishing system w/engine shut down system
- Stainless steel safety rails along inboard engine stringers

- 24V Reverse fuel transfer pump
- Single Racor marine filter system with gauge for generators
- Tolling valve for twin disc engine control
- Flybridge stainless steel ladder to hard top roof ship loose
- Additional waterproof ACR searchlights controls to Flybridge console
- Double Gaggenau BBQ w/safety switches
- U-Line BI-2015SS ice maker at BBQ cabinet (electro polished)
- Pre-wire for power supplied water maker
- Fresh water wash down faucet in engine room
- Stainless floorboard frames, floorboards covered with non skid vinyl & trimmed with teak
- MAN - CR 1360 HP- ZF BW665A gears w/electronics shift 3 1/4" HS shaft
- Aquadrive stern thruster (designated pump)
- 2nd Hynautic steering pump system
- Headhunter tank monitor, Headhunter caliber back up system fresh water pump
- Marine air system, 24 BTU AC unit at engine room

## Electrical System

---

- (4) Sea Gel 8D gel cell main engine start batteries (24V)
- (2) Sea Gel 4D gel cell generator start batteries (24V)
- (8) Sea Gel 8D gel cell batteries for ships 24V system
- Battery cross-over capability for main engine and generator batteries
- Xantrex SW-40/24 4kW inverter/120amp charger with high temp shut down
- Newmar PT-24-40CE 24V ship service back-up charger with high temp shut down
- Newmar PT-24-20CE 24V engine battery charger with temp shut down
- Additional 60-amp 24V alternator on each engine for ship's service systems
- Panasonic phone/intercom system, 7 station
- Wyngard TV antenna booster & selector switch
- ACR searchlight
- 34" Plasma screen TV at Salon & Polk Audio surround speaker system at Salon
- Polk Audio speaker systems at Pilothouse, Flybridge, Aft Deck, Master, VIP and mid Guest Cabin
- 20" TV in Master Stateroom, 15" TV in VIP and mid Guest Stateroom
- Spreader lights at radar
- Camera under boat deck to look at Cockpit
- 24V & 12V back-lit distribution/circuit breaker panels w/amp & volt meters
- 120V & 240V back-lit distribution/circuit breaker panels w/amp & voltmeters
- (4) Mastervolt 20-amp converters, 24V to 12V
- Marineco shorepower 125/250V-50A, phone and TV cable inlets port and Starboard side (or forward and aft)
- Glendinning CM-7 Cable Master, 240V 50-amp w/75' cable
- Halogen overhead Cantalupi lightning w/dimmer controls throughout
- Wall sconces and reading lights in staterooms and heads



- Underwater lights
- Weems and Plath bilge counters

## Propulsion System

---

- Stainless steel #316 (w/316-L rod) exhaust risers w/zinc plugs connecting to FRP underwater system w/bypass pipes to Aqua Quiet mufflers
- 2 3/4 Aquament #22 high strength propeller shaft
- Four blade expanded ration computer designed propellers
- Dripless propeller shaft glands (Tides) with dual cooling lines
- 9' Roll fin hydraulic stabilizers and 40hp bow thruster w/hydraulic raw water cooling pump
- Twin disc electronic engine controls in Pilothouse, Flybridge and Aft Deck
- Hynautic power steering system
- Engine room start/stop panels with engine gauges
- Visual and audio alarms for engine systems at Pilothouse and Flybridge

## Equipment

---

- Hynautic 62" trim tabs with controls in Pilothouse and Flybridge
- Marine Air 90,000 BTU expansion air conditioning system
- Revereso 24V/AC oil change system with (2) 30 gallon oil tanks
- Exalto stainless articulating windshield wipers w/washer system
- 120V Headhunter holding tank discharge pump
- 24V Sealand standby macerator pump
- Deck discharge for holding tank
- (6) 24V Bilge pumps with Ultra automatic switches
- Ultra system high water bilge alarm w/warning lights at Pilothouse
- Allcraft 35 gallon 220C stainless steel hot water heater

## Electronics

---

- Furuno RD 30
- Simrad AP-20 remote for auto pilot
- ICOM 502 VHF black
- ICOM 602 VHF radio 12 VDC
- Furuno MU 155C 15" color monitor for radar, chart plotter and Furuno VX2, GP 1920CBB/NT
- KVH Trac TV 6 SAT TV antenna for Dss
- Digital 4000 cell phone Amp. wireless 50'
- KVH Dummy Dome TV 6
- Simrad AP25 Autopilot w/AC 20 CPU, RC 36 compass and RPU 80 drive for power

steering vessel

- Furuno RD 30 depth nav repeater
- (2) Furuno MU 155C 15" color monitors
- Furuno GP 1920CBB/NT VX2 Nav Net black box GPS/chart plotter w/12 channel GPS/WASS antenna
- Furuno VX-2, 1964CBB/NT 25kw 72n.m w/6' Ocean Arry black box C-Map max
- Furuno ARP II
- Furuno BBF Network Sounder DS receivers for SAT TV, RF type

## Main Deck

---

- Walkaround decks with high bulwarks midships
- Two-tone non-skid at all decks, pilothouse roof white non skid
- 1 1/4" Stainless steel hand rails and bow
- Mainship overhead hatches with Ocean Air sliding screens/shades
- Bow & stern staffs, stainless steel sockets
- Fresh and salt water wash downs at bow
- Aluminum re-enforced exterior doors, exterior covered with FRP & gel coated, interiors covered w/matching interior wood, stainless steel door frames

## Cockpit

---

- Aft deck engine & thruster controls, rudder indicator & engine start-stop switches
- Port aft deck storage cabinet with covered sink, Isotherm refrigerator & Teak ventilation grates
- Starboard aft deck storage cabinet with hatch/ladder to lazarette, crew and engine room
- Stainless steel ladder to boat deck with overhead hatch
- (2) Aft deck flood lights
- Swim platform with (4) removable stainless steel 2" diameter U-handrails
- Stainless steel pop up cleats at sport deck
- Stainless steel swim ladder at sport deck folding into storage locker
- Hand-held shower at sport deck
- Fresh water wash down at sport deck
- Poly Planar waterproof speakers in aft deck overhead with volume control
- Camera at aft deck

## Flybridge

---

- Manship door/hatch access to/from pilothouse
- Helm station with complete engine instrumentation, function alarms & rudder indicator
- Lexan Venturi windshield with stainless steel frame

- (2) Stidd helm chairs
- FRP "L" seat, storage under with Teak ventilation slats
- (2) FRP tables with stainless steel support posts
- Starboard cabinets with sink, stainless steel Isotherm 85 refrigerator & Teak ventilation grates
- Boat deck drained to waterline with integral drains and scuppers
- 1 1/4" Stainless steel handrails at boat deck w/welded stainless steel safety rail
- Fresh water wash down outlet
- Poly Planar waterproof speakers in radar arch with volume control
- FRP hardtop
- Upgraded to Steelhead 1,800 davit w/boom extension, 26" H base
- 2009 14' 360 DL Novurania with 115hp Yamaha outboard
- EZ2CY glass over fwd windshield and side curtains

---

## Pilothouse

---

- Helm station w/complete engine instrumentation, function alarms and rudder
- Vinyl wood sole
- Headhunter tank monitoring system for fuel & water levels
- Tank Watch level indicators with automatic shut down at holding tanks
- Back-lit AC & DC distribution/breaker panels
- Chart table/locker
- Halogen Cantalupi lighting with dimmer controls
- Rocker switches with indicator lights for bilge pump, light and functions, etc.
- Port and starboard FRP sliding track doors with stainless steel frames
- (2) Ventilation overhead hatches with Ocean Air sliding screens/shades
- (2) Stidd helm chairs upholstered in Ultraleather
- Raised "L" shaped seating at dining table
- Woodwork w/satin finish, recessed paneled cabinet doors
- UV protectant varnish on all console veneers
- Padded soft vinyl removable headliner
- Sub Zero under-counter refrigerator

---

## Accommodations

---

Custom features and upgraded décor throughout

---

## Salon

---

- Optional aft stairway to owner's stateroom
- Electric/air opener for aft door with fixed glass windows top & bottom

- Built-in 37" Plasma TV & Polk Audio surround speaker system
- Solid wood crown molding surrounding salon
- Lambrequins at windows
- Halogen Cantalupi lighting w/dimmer controls and (4) 120V wall sconces
- High quality carpet with sound pad
- Solid brass interior door hardware and locks
- 42" Plasma TV
- U-Line Origins wine cooler
- Coffee table with leaves on a electric/hydraulic lift
- Storage bags for Salon table leaves

## Galley

---

- Granite counter tops with overhead hanging storage cabinets
- Halogen overhead lighting with dimmer control, under cabinet lighting
- Fold-out soap tray at galley sink
- Drawers and cabinets fitted with push/pull latches & lined with formica
- Double stainless steel sink with Grohe faucet
- Grohe soap dispenser
- Insinkerator stainless steel classic garbage disposal with top switch
- GE 220V oven below cook top
- GE microwave/convection oven with exhaust fan
- Sub-Zero 700 TC refrigerator with (2) drawer freezer below
- Solid wood crown molding surrounding galley
- Vinyl Wood sole
- Broan trash compactor

## Master Stateroom

---

- King-size walk around bed with drawers & storage under
- Cedar-lined hanging lockers
- Built-in upholstered seat for vanity/desk
- Polk Audio speaker system
- Built-in LCD 20" TV with bureau drawers below
- Woodwork with satin finish, recessed paneled cabinet doors
- Cantalupi halogen over-head lighting
- (2) Manship stainless steel opening port lights powder coated to match get coat
- Safety escape hatch at overhead
- High quality carpet w/sound pad

## Forward VIP Stateroom

---

- Queen-size island bed with hinged top and drawers below
- Cedar lined hanging lockers
- Polk audio speaker system
- Built in 15" LCD TV
- Cantalupi halogen overhead lighting with dimmer control & berth lighting
- Safety escape/ventilating hatch to forward deck with Ocean Air shade/screen
- (2) Manship stainless steel opening port lights

## Forward Head

---

- Shower with frameless glass door and integral towel bar with teak grate
- Cantalupi halogen overhead lighting with dimmer control
- Ultra-quiet ventilation system

## Mid Guest Stateroom

---

- Side bunks with desk
- Cedar lined hanging locker
- Built-in 15" LCD TV
- Polk audio speaker system

## Crew Cabin and Head

---

- Two single bunks
- Hanging locker
- Formica surfaces with teak trim
- Cantalupi Halogen overhead lighting with dimmer control

Head:

- Marbleite countertop & sink with Grohe faucet
- Enclosed head "Tecma" and FRP shower
- Vinyl wood sole
- 15" TV
- (2) Manship stainless steel opening port lights powder coated to match gel
- Ultra-quiet ventilation system

## Lazarette

---

- Watertight access door to swimstep/cockpit area
- Ladder and watertight hatch to California deck

- 40 Gallon crew holding tank with monitor in Pilothouse
- Cabinets and work surfaces covered in off-white formica with teak trim
- (2) Opening port lights
- Non-skid vinyl sole
- Stainless steel sink with Grohe europlus faucet and plumbing
- Isotherm reefer
- G.E. microwave
- (2) Sub-zero drawer freezer
- Craftsman toolchest

## Исключения

---

При продаже яхты исключаются личные вещи владельца.

## Отказ от ответственности

---

Компания предоставляет описание судна или яхты добросовестно, но не может гарантировать точность этой информации, а также не ручается за техническое состояние. Покупатель должен проинструктировать своих агентов или оценщиков исследовать представленную информацию более подробно, по собственному желанию. Продажа судна или яхты, изменение цены или снятие с продажи будет происходить без предварительного уведомления.

# ФОТОГРАФИИ

**Main Profile**



**Starboard 3**



**Profile "SERENITA"**



**Port Side Profile**



**Port Side Profile**



**Aft Deck**



**Main Salon**



**Main Salon**



**Main Salon**



**Main Salon**



**Full Beam Master Stateroom**



**Master Head**





**Forward Guest Stateroom**



**Guest Stateroom**



**Guest Head**



**Laundry**



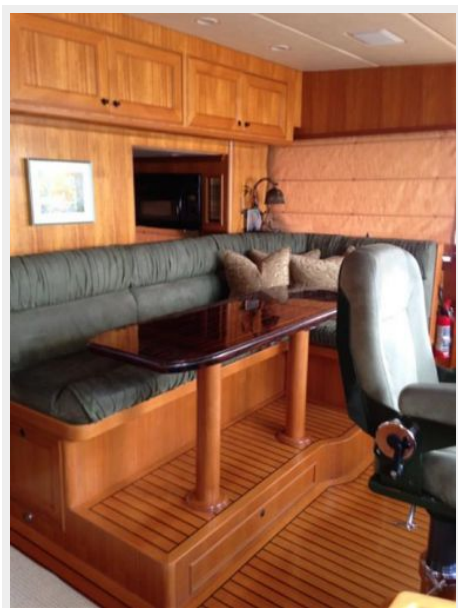
**Pilothouse Helm**



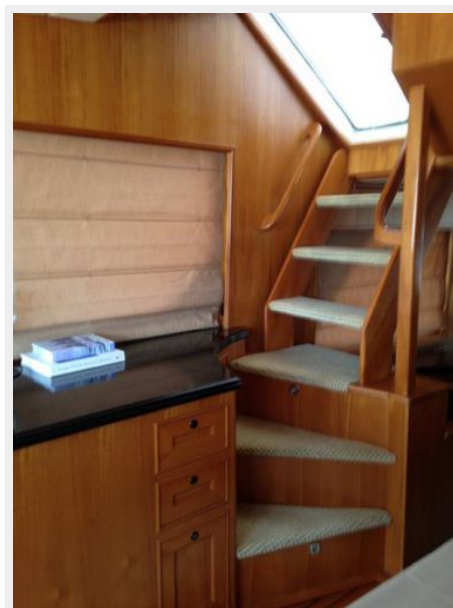
**Pilothouse Helm**



**Pilothouse**



**Stairs to Flybridge**



**Flybridge Helm**



**Flybridge Grill**



**Flybridge**



**Tender**



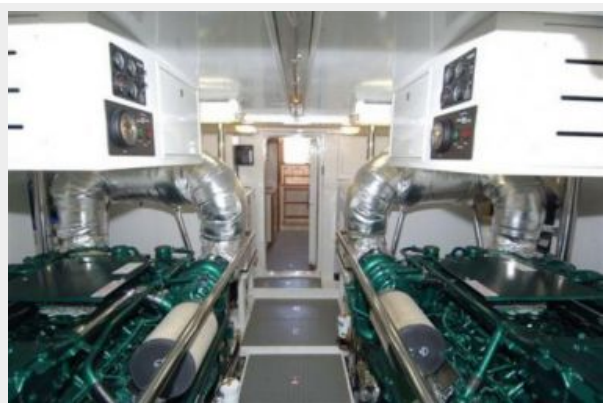
**Crew's Quarters**



**Crew's Quarters**



**Standup Engine Room**



**Engine Room**



**Aft Deck Controls**



**Aft Deck**



**Aft Deck**



# КОНТАКТЫ

---

Андрей Шестаков (Andrey Shestakov) – ведущий яхтенный брокер отдела продаж яхт и судов компании Shestakov Yacht Sales Inc. Официальный представитель Shestakov Yacht Sales Inc. для русскоговорящих клиентов в центральном офисе компании в Майами/Форт Лодердейл/Флорида/США.

## Контактная информация

---

Email: [andrey@shestakovyachtsales.com](mailto:andrey@shestakovyachtsales.com)

Web: [shestakovyachtsales.com](http://shestakovyachtsales.com)

## Телефоны

---

Краснодарский край: **+7(918)465-66-44**

США, Майами, Флорида: **+1(954)274-4435**

## Время работы

---

Понедельник – Суббота: **9:00 - 21:00**  
EDT

Воскресенье: **Закрето**

## Адрес

---



Harbour Towne Marina, 850 NE 3rd St,  
STE 213, Dania, FL 33004