

## CATERA — HARGRAVE



**Builder:** HARGRAVE

**Year Built:** 2010

**Model:** Motor Yacht

**Price:** PRICE ON APPLICATION

**Location:** United States

**LOA:** 101' 0" (30.78m)

**Beam:** 21' 0" (6.40m)

**Max Draft:** 5' 8" (1.73m)

**Cruise Speed:** 15 Kts. (17 MPH)

**Max Speed:** 20 Kts. (23 MPH)

Our experienced yacht broker, Andrey Shestakov, will help you choose and buy a yacht that best suits your needs **Catera — HARGRAVE** from our catalogue. Presently, at Shestakov Yacht Sales Inc., we have a wide variety of yachts available on our sale's list. We also work in close contact with all the big yacht manufacturers from all over the world.

If you would like to buy a yacht **Catera — HARGRAVE** or would like help answering any questions concerning purchasing, selling or chartering a yacht, please call **+1(954)274-4435**

# TABLE OF CONTENTS

TABLE OF CONTENTS	2
SPECIFICATIONS	6
Overview	6
Basic Information	6
Dimensions	6
Speed, Capacities and Weight	7
Accommodations	7
Hull and Deck Information	7
Engine Information	7
DETAILED INFORMATION	8
Recent Upgrades	8
Accommodations	8
Salon	8
Galley	9
Master Stateroom	9
Lower Foyer & Laundry Room	10
VIP Stateroom/Lower Deck Master	10
Guest Staterooms	10
Crew Staterooms	10
Electronics	11
Audio & Visual Equipment	12
Engine & Mechanical	13
Flybridge	13
Aft Deck	14
Interior Equipment	14
Exterior Equipment	14
Tender	15
Exclusions	15

Exclusions	15
Disclaimer	15
PHOTOS	17
Salon	17
Dining Area	17
Galley	17
Master Stateroom	17
Helm	17
Salon	17
Salon	18
Dining Area	18
Dining Area	18
Dining Area	18
Galley	18
Galley	18
VIP Stateroom	18
VIP Stateroom	18
VIP Stateroom	19
VIP Stateroom/VIP Head	19
VIP Shower	19
Master Stateroom	19
Master Head	19
Master Stateroom	19
Master Head	20
Guest Staterooms	20
Guest Stateroom	20
Guest Stateroom	20
Guest Head	20
Guest Head	20

Guest Shower	21
Companionway	21
Captain's Stateroom	21
Crew Quarters	21
Crew Quarters	21
Crew Lounge	21
Pilothouse	22
Pilothouse	22
Flybridge Helm	22
Flybridge Helm	22
Flybridge	22
Flybridge	22
Upper Deck Seating	22
Upper Deck Seating	22
Upper Deck Seating	23
Upper Deck Bar	23
Upper Deck Seating and Jacuzzi	23
Upper Deck	23
Upper Deck	23
Upper Deck Dining/Lounge Area	23
Flybridge	23
Flybridge	23
Tender/ Mopeds	24
Aft Deck Seating/Dining	24
Aft Deck Seating/Dining	24
Aft Deck Seating/Dining	24
Aft Deck Seating/Dining	24
Swim Platform	24
Transom	25

Transom	25
Forward Deck Seating	25
Bow Profile	25
Engine Room	25
Engine Room	25
Engine Room	26
Engine Room	26
Engine Room Entrance	26
Lazzarette	26
Layout	26
Profile Port	26
Profile Starboard	27
Profile Starboard	27
Profile Starboard	27
Profile	27
Profile Aft	27
CONTACTS	28
Contact details	28
Telephones	28
Office hours	28
Address	28

# SPECIFICATIONS

---

## Overview

---

From the moment you step aboard, you will be amazed by the abundance of space this 101 foot yacht provides. She offers an inviting atmosphere for friends and family to gather together both in celebration and in everyday living. "Catera" offers a welcoming and relaxed spirit while encompassing a modern and highly desirable lifestyle. ***This yacht features two master staterooms, one on deck and one below.*** The yacht provides ample space for entertaining guests on the aft deck, flybridge, or main salon. The ***crew quarters*** features a 3 stateroom, 3 head crew quarters with a crew lounge which you would typically see on a much larger yacht. A La Mer Inc. interior and exterior soft goods were completely updated in 2013 with a cost of over \$200,000. Call today for more information or to schedule a showing on this beautiful 101' Hargrave.

**CAT Platinum Plus Extended Service Coverage until May 2018.**

## Basic Information

---

**Category:** Motor Yacht

**Model Year:** 2010

**Year Built:** 2010

**Country:** United States

## Dimensions

---

**LOA:** 101' 0" (30.78m)

**LWL:** 91' 0" (27.74m)

**Beam:** 21' 0" (6.40m)

**Max Draft:** 5' 8" (1.73m)

**Clearance:** 32' 0" (9.75m)

**MFG Length:** 101' 0" (30.78m)

---

## Speed, Capacities and Weight

---

**Cruise Speed:** 15 Kts. (17 MPH)

**Max Speed:** 20 Kts. (23 MPH)

**Displacement:** 108000 Pounds

**Water Capacity:** 600 Gallons

**Holding Tank:** 200 Gallons

**Fuel Capacity:** 3200 Gallons

---

## Accommodations

---

**Total Cabins:** 4

---

## Hull and Deck Information

---

**Hull Material:** Fiberglass

---

## Engine Information

---

**Manufacturer:** Caterpillar

**Model:** C-32

**Engine Type:** Inboard

**Fuel Type:** Diesel

# DETAILED INFORMATION

---

## Recent Upgrades

---

- 
- Garmin 8530 with 2 GRID remotes on flybridge and pilot house
- Garmin XM weather
- Fusion audio system with remotes on fore and aft deck, all new wiring, JL audio amp and JBL marine speakers
- EZ2CY enclosure
- 5 Lumishore TIX 601 LED underwater lights
- Machinery space detailed with awlgrip paint
- Galley and passage way wood floors refinished with scratch resistant and ding proof coating
- Whisper quiet frequency drives added to master AC blower fans
- New bottom paint and propspeed on all running gear
- Fins dropped and serviced
- Watermaker membranes replaced
- Cutlass bearings replaced
- New software programming installed on all 4 chillers
- 

## Accommodations

---

The yacht easily accommodates 8 overnight guests in 4 large staterooms and creates opportunities to travel, entertain and enjoy life's adventures surrounded by family & friends. The layout features an on deck master suite, a second full beam master suite below and two guest suites. Outstanding crew quarters are below and forward w/ three cabins, three heads, walls of storage closets, separate washer dryer units and full crew lounge with refrigerator, and TV. Commercial quality galley with dual work stations and double appliances as well.

## Salon

---

The main salon features beautiful cherry gloss and camphor burl. The salon layout is designed with contemporary angled cabinetry that provides an abundance of counter space and storage. The 45 degree angles are mirrored in the main salon and dining ceiling soffits. Inside the soffits is a band of beveled mirrors that give the illusion of a much higher ceiling; not that this Hargrave needs it, as the ceiling height is over 7'. The furniture is plush with straight lines and enough room to lounge in any position. The overall mood is clean, modern and very comfortable. There is cherry gloss crown molding throughout the main salon with the A/C system streamlined



throughout, hidden using the crown molding. This salon has top brass jasmine chrome sconces, chrome Cantaluppi and Sonneman pendant island dining chandelier. The door hardware is chrome. The window treatments are Roman shades of R.M. Coco Longitude linen fabric. The port aft corner houses a 50" Sharp, Apple TV, and complete AV system including Blu Ray, DVD, and Marantz surround sound system. Salon is loaded with usable storage space, and storage for a china set for up to ten (10) guest and two (2) wine coolers. New Carpet in salon. (2) wine coolers in salon

## Galley

Forward of the main salon is the working style/commercial galley. This area was designed so that each member of the crew working in the galley has their own area specifically designed for the prep he or she is doing. There is a cooking and prep area for the chef with enough countertop space to plate 12 dinners; a prep area for the sous chef; a coffee and dessert area; and a clean up area with dishwasher. Four completely separate areas that all work together in perfect harmony for the preparation and sequence of a meal. There is a chef's sink in this prep area accessible from the cooking area or prep area. There is a second sink next to the dishwasher and across from the coffee/dessert prep area. The full height backsplash in the galley area is polished stainless steel which looks like mirror and really expands the space. The counter-tops are Black Galaxy granite, with flecks of silver, gold, and black. The cabinets are the same finish and quality as the salon, cherry gloss, and all the appliances are stainless steel. There are three separate pantries in this area providing plenty of room for food and dry goods storage.

U-Line White Fridge in Crew Quarter  
GE White Stacked Washer/Dryer in Crew Quarters  
GE White Washer in Foyer (2)  
GE White Dryer in Foyer  
U-Line Black Fridge in Foyer  
Kenmore White Freezer in Aft Crew (2)  
Sub-Zero S/S Built-In Fridge w/ Freezer Drawers in Galley (port new in 2012)  
GE Profile Cooktop & Profile S/S Oven in Galley  
Broan Hood in Galley  
Broan w/ (2) Transition in Galley  
GE Profile Oven in Galley  
GE Profile S/S Microwave in Galley  
GE Profile Dishwasher in Galley (2)  
GE Disposals in Galley  
Avanti S/S Ice Maker in Salon  
U-Line White Fridge at Aft Deck  
U-Line White Ice Maker at Aft Deck - New 2013  
U-Line White Fridge in Flybridge  
U-Line White Ice Maker in Flybridge  
Lazy Susan corner lower cabinet in galley  
Stainless backsplash above cooktop in galley (2)  
Farke stainless sinks in galley  
Instant Hot Dispenser in galley

## Master Stateroom

The on-deck master stateroom is forward of the galley and day head. As you enter this on deck master there is a walk-in closet. The king bed is positioned in the center of the room a large storage area that is accessed by opening the hidden-hinged, headboard. The 42" TV with surround sound is located centered aft on the aft wall with a DVD player, its own separate stereo system. She also has a comfortable settee on her port side.

The ensuite bath has its entrance on the port side of the vessel, opposite the starboard entrance

so there is more privacy in the bath area. The marbles are a beautiful, rich and creamy color with little fossils visible in the Pearlato Suevo and an Emperadora Light which is a mocha tone. The large bath is appointed with double classic rectangular basins with lots of counter space inbetween. There is a shower with (3) sides of glass that is bright and elegant in the corner. This spacious bath also boasts a vanity area with several drawers.

---

## Lower Foyer & Laundry Room

---

On the starboard hallway of the main deck are the stairs to the guest foyer. At the bottom of the stairs is an elegant Cherry and Camphor burl foyer console and mirror. This console cabinet splits in the middle and doubles as the doors that disguise the laundry station. The laundry room has an extra-large washer and (2) large dryers. When the guests are not on board, as in a turnover, the laundry doors are meant to be left open to increase the workspace. There is a countertop for folding and a cabinet for all of the washing necessities. The area has a special booster AC unit that keeps the laundry room from heating up the guest area.

---

## VIP Stateroom/Lower Deck Master

---

The lower deck master is a full beam stateroom with spacious walk area and a settee on the port side. His and her closets with one equipped with a combination safe. The wall behind the upholstered king headboard is mirrored with sconces at the bedside to make the open space welcoming and inviting. The portholes are large with elegant double window treatments with a combination of sheers and blackout. She has a 40" Sharp TV, DVD player, Surround sound, DVR recorder and separate stereo sys

His and her bath share a spacious shower midship. The semi-recessed curved sinks set in the Perlato Suevo marble vanity top mirror each other from port to starboard. The floor of the heads is Emperador Dark Marble slab floor with a double border in Perlato Suevo and Emperador Dark Marble.

---

## Guest Staterooms

---

The two guest suites each have convertible beds that can either be made up easily as queen beds or as two (2) beds. Each guest suite has ample storage with a hanging locker and drawers underneath. Both port and starboard staterooms have its own private shower/ensuite head and wall mounted TV.

---

## Crew Staterooms

---

Crew accommodations were uniquely designed to accommodate private and charter use. The

crew quarters allow for up to (6) crew members, as needed. Access to the crew area is forward on the port side of the galley and down a short flight of stairs. Once down these stairs, you are greeted by an outstanding crew lounge that rivals yachts of a much larger size. There is a large settee with TV, DVD player, and refrigerator for relaxing when the crew is off. This area also boasts five (5) large floor to ceiling cabinets for storage and second laundry station that has large, stacked washer/dryer for crew. There are (3) double crew staterooms each with it's own head and shower. The captain's stateroom has a queen size bed, large hanging locker, dresser, small desk, 40" Samsung TV, and Network to ships navigation system. There is also an audible anchor drag system with speakers for the crew lounge and Captain's stateroom. A hidden watertight door allows crew to easily access the lower guest accommodations. The crew area is finished in the same quality as the rest of the yacht and all heads have marble vanities and shower seats. It is hands down the most comfortable crew area of any yacht in Catera's class.

## Electronics

(4) Masters 24V power supply mounted in Lower Helm Furuno 12kW mounted in Lower Helm Furuno Target Plotter mounted in Lower Furuno DFF1 Digital Network Sounder VX2 mounted in Lower Helm Furuno 600W BRZ TH w/ Block mounted @ Hull Furuno 8 Port Ethernet Switch mounted in Lower Helm (4) Furuno Network Hub Adapter Cable mounted in Lower Helm Simrad AP 25 w/ AC20 & RPU 80 mounted in Lower Helm (2) Raymarine ST 60+ Depth Display mounted in Lower Helm (2) Raymarine Transducer B45 Long w/Fair Blk mounted @ Hull Raymarine ST 60 + Speed System mounted in Lower Helm Raymarine ST 60 \_ Wind System w/ 50M Cable mounted in Lower Helm ICOM IC-M604 Black mounted in Lower Helm ICOM Command MIC III black mounted in Lower Helm (2) Newmar Hailer Horn 60/40 mounted @ Hard Top Furuno GP DGPS+WAAS combination mounted in Lower Helm

Glass Bridge custom Master computer, 24V mounted in Lower Helm- \$7,000- Upgrade Keyboard/Mouse Interlink mounted in Lower Helm Nobeltec Admiral 9.0/ Upgraded Nor-Tech Trident \$2,000.00 Nobeltec passport Deluxe US Region Florida East Coast & Keys Nobeltec Passport Deluxe Bahamas Reg-9 Brother MFC color fax, printer, scanner Pelco 2 CAM system 1 PTZ @ ER fixed @ Aft Deck- Security Recorder for all Cameras (200) Pelco Simon CAM Cable PTZ @ ER fixed @ Aft Deck - Security Recorder for all Cameras Furuno FA 150 AIS system mounted in Lower Helm Digital 500 Series 4' Marine AIS mounted @ Hard Top Furuno FA 150 ANT Ext 15M mounted @ Hard Top ACR RCL 100B 24V Spotlight system Lower Helm & Upper Helm Furuno 15" LCD Color Display mounter in Upper Helm - PIP to Cameras Furuno 1934 CBB NT Radar/Plotter mounted in Upper Helm Anchor Alarm Installed in Crew Quarters Simrad AP 25 Second Station mounted in Upper Helm Raymarine ST60+Depth Display mounted in Upper Helm Raymarine ST60+Graphic Display mounted in Upper Helm ICOM IC-M604 Black mounted in Upper Helm ICOM Command MIC III Black mounted in Upper Helm Furuno 15" LCD Color Display mounted in Upper Helm for Radar & Master Computer Nauticomp Mouse, Panel Mount mounted in Upper Helm ACR Second Station Control Kit mounted in Upper Helm Panasonic PH 824 Adv Hybrid KSU Panasonic PH 824 Ext Card Panasonic Ph 824 Fax Detect/ OGM Card (8) Panasonic PH T-7731-B Speaker Phone (2)

Panasonic PH Cordless Multiline(11) Panasonic PH Programming chargeKVH Tracphone  
 F33KVH M7 Control Panel- Upgrade for US/Caribbean(2) Tropica 5" KVH T4/G4 Tower  
 MountNewmar 32-12 converter 50 AMP

## Audio & Visual Equipment

- 50" Sharp TV wall mounted in salon
- Apple TV network to Salon TV
- Marantz SR5002 7.1 Home Theater mounted in Salon
- Zone 2 Amp 235W mounted in Salon
- (6) Sonance Symphony TL 621R Thinline Ceiling mounted in Salon overhead
- Sonance son of Sub 10" SW mounted in Salon
- Sharp LCD Blu Ray Player mounted in Salon
- Direct TV HD DSS Receivers - USA/Caribbean Independently Wired to all Recievers through-out the yacht-\$22,000 Upgrade
- APC 500VA Smart Rack mount UPS mounted in Salon
- IR Expansion mounted in Salon
- Middle Atlantic Sliding Rail Rack mounted in Salon
- Sonance SS6VC 6 Pr. Speaker Volume Selector Audio @ Dining, Galley, and Pilothouse
- Vimar 110V outlet waterproof mounted @ Aft Deck
- Vimar Composite outlet waterproof mounted @ Aft Deck
- Sonance Symphony TL 621R Thinline ceiling mounted in Dining area
- Vimar volume control w/ Chrome bezel mounted in Dining area
- Sonance Symphony TL 621R Thinline ceiling mounted in Pilothouse
- Vimar volume control with Chrome Bezel mounted in Pilothouse
- Sonance Symphony TL 621R Thinline ceiling mounted in Galley
- Vimar volume control with Chrome Bezel mounted in Galley
- Vimar volume control with Chrome Bezel mounted in @Flybridge
- Vimar 110V outlet waterproof mounted @ Flybridge
- Vimar Composite outlet waterproof mounted @ Flybridge
- (2) Sharp LCD 42" bottom speakers mounted in Master & On Deck Master
- (2) Peerless Universal Mount mounted in Master & On Deck Master
- (2) Direct TV HD DSS, DVR receivers mounted in Master & On Deck Master
- NAD L54 DVD/CD receiver mounted in Master & On Deck Master
- (2) IR expansion mounted in Master & On Deck Master Full Surround Sound system with IPOD docking in Master
- (3) Sonance Symphony TL 621R Thinline ceiling mounted in Master & On Deck Master - Master Stereo System
- (5) Sharp LCD 20" TV Slim Black mounted in Port SR, Starboard SR, Crew -Lounge, Crew Starboard SR and Port Quarters SR.
- 40" Samsung TV, DVD, Blu-Ray and Network to Navigation to Stateroom system in Captains Stateroom
- (5) Direct TV DSS receiver mounted in Captain, Guests & Crew - Caribbean/USA

- (5) 110V DVD player mounted in Captain, Guests & Crew
- (5) IR expansion mounted in Captain, Guests, & Crew
- TV distribution board
- (7) RG6 for TV system
- Vizio 32" on Flybridge - Feb 2015
- LG 42" on Aft Deck - Feb 2015

## Engine & Mechanical

Twin Caterpillar C-32 1675HPCAT Platinum Plus Extended Service Contract until May 2018  
 Fresh water filling faucet in Engine room  
 230v, 115v and 60Hz Electrical System  
 Color coded wiring throughout  
 (8) 200 amp/hr batteries for engine & ship power - Deka D-8  
 Batteries  
 Separate 120 amp/hr batteries (2) for generators - Gel Cell Batteries  
 All batteries in FRP battery boxes  
 Main electrical panel w/ separate AC Power control and circuit breaker panel  
 AC Cruise Air Chilled Water System 12 tons- Upgrade Soft Start System  
 Dolphin 24v AC/DC light transformer 100 AMP (3)  
 Mufflers for Main Engine By-Pass  
 Double insulated engine room  
 Naiad stabilizer system Model 302 with 12 sq ft. fins- serviced Aug 2015  
 Multisea II Control System  
 Double steering backup pump on PTO of port & starboard engine  
 Naiad 16ht Proportional Hydraulic Bow Thruster  
 Delta T System

Sea Fire Automatic Fire Extinguisher System  
 Phazer 40 kW 60Hz Generators (2) with soundshield water drop exhaust- Port 5,255 hours, Starboard 5,168 (read 10/6/16)  
 Maxwell VC3500 Stern Winch (2) NEW 2012  
 Double Racor filters on main engines  
 Hot Circulating Water Pump  
 Water Tank capacity - 600 gal.  
 Water Heaters - 30 Gallons each (2)  
 Sea Recovery Inc. Aquamatic 1800 PD water maker - membranes replaced 4/15  
 Anchor 250lb in hull w/ mounted Maxwell VWC 4000 DC Windlass (1) with Freshwater washdown  
 (2) Glendinning CM-8 100Amp Cablemasters port and starboard  
 100 amp shorepower plugs (2) at transom and (1) forward.  
 Glendinning controls upper and lower station with two remotes and a hand held remote station at stern.  
 Tide Seal Dripless Rudder Logs and shaft  
 Jabsco Emergency Bilge Pump 18330  
 Mastervolt battery chargers: 1-80Amp (24V) / 1-30Amp (24V) / 1-30Amp (12V)  
 Safety Handrails around perimeter of main engines  
 Reverso Oil Change Pump for engines, transmissions and generators  
 Leeson 24V Fuel Transfer Pump (C4D17FK9B)- DC back-up pump

•

## Flybridge

The Flybridge features everything! Both the huge horseshoe seating area on the port side and the bar with its teak edged light marble top and seating for four at the bar gives plenty of open space to gather during the day or the evening to enjoy your time on the water. There is a sunpad for sunbathing next to the jacuzzi. The convertible ceiling/top that electronically opens on sunny days and starry nights only enhance the spaciousness of this outdoor living area. There are two teak cocktail tables with sun dial inlays and cross-grained patterns in front of the horseshoe

seating area. There is a ton (11') of storage on the starboard side of the F/B and a large gas grill to port aft of the sunpad. Two front gate lounge chairs with covers and all upholstery re-done with quick dry foam a \$60,000 upgrade.

## Aft Deck

---

The aft deck easily can handle a big crowd. The fabrics are in shades of aqua, light green and blue. The beautiful teak dining table has curved sides and straight ends, a very modern twist for the aft deck. Seating for 8 -10 people around a teak table with full covers for the table and chairs. She also has NEW 42" LG TV with cover, U-Line Icemaker, and fridge and LED dimming lighting.

## Interior Equipment

---

Columns (2) in Salon Columns (2) under soffit and (2) half round columns to bed in deck  
Master Kohler Caxton Biscuit sinks in On Deck Master, Port & Starboard, Master (2), Capt, Crew and Day head  
Awlgrip finish in shower stalls 6- cherry frame w/ mirror for forward console top in salon  
Granite floors in day head & On Deck Master guest head  
Marble Shower seat in starboard guest

Marble bathroom floor in starboard guest  
Marble Shower seat in port guest  
Marble bathroom floor in port guest  
Marble Shower walls in On Deck Master head  
Marble Shower seat in On Deck Master guest  
Marble bathroom floor in On Deck Master guest  
Marble Shower seat in starboard crew  
Marble Shower seat in port crew  
Marble Shower seat in Captain  
Marble bathroom floor in Lower Deck Master  
Marble floor behind the bar in Main Salon  
Marble on shower walls, seat & floor in Lower Master Head  
Marble/Granite on forward console top in Salon  
Split berths slide together in starboard and port guest cabins to make full sized bed (10)  
Headhunter heads throughout with 2 x 110 volt pumps and 24v pump  
Vimar Electrical switches with (9) dimmers- 3 NEW Aft Deck Dimmers added  
Nutone central vacuum system w/ 8 outlets  
Owner safe in master cabin  
Grohe plumbing fixtures and hardware (8)  
Sconces in main salon  
Interior stairway with handrails from Pilothouse to flybridge  
Majilite upholstered walls in specified areas.  
Frameless Glass Shower doors in Port and Starboard Guest and On Deck Master  
Mirror wall in Day Head  
Mirror ceiling in Day Head  
Mirror ceiling in On Deck Master  
Mirror ceiling in Master Bath  
Table on slides in crew area (2)  
Bar stools in crew area  
Crown molding in Lower Foyer, Port Guest, Starboard Guest, On Deck Master, Master Day head, Pilothouse, & Salon  
Concealed doors in lower foyer with laundry center hidden behind (2)  
storage lockers under stairway in foyer  
Clear glass shelves with chrome supports in Salon  
Glass top for Main Salon cocktail table  
Bottle storage in Main Salon  
Pneumatic sliding hatch powered by air compressor from Pilothouse to Flybridge  
Flybridge starboard counter top is teak with high gloss finish

## Exterior Equipment

---

Painted flybridge decks with nonskidFiberglass hardtop with retractable roof and mast openingSingle masthead light on hard topHargrave style mastMarble Bar top on FlybridgeCompass roses for Flybridge tablesHi-Lo table bases for Flybridge tablesCustom wet barAft Deck table on slide

Aft deck seating(5) aft deck teak chairsLocker for boarding ladderU-shaped hand rails on Swim PlatformU-shaped hand rails in FlybridgeAccess hatch on aft deck to crew pull down w/ ladderEnlarged aft deck hawasers openings with rollersStainless corner hawse pipe with roller and cleat at port & starboard side of aft deckKahlendberg air hornQuartz floor lightsFRP BBQ cabinet with gas grillGFI at /Helm console and BBQ on FlybridgeJacuzzi on flybridgeQuick dry foam seating/sunpadWet Bar on Flybridge with (4) bar stools - New Upholstery 2013Additional wet bar for fridge and ice maker in Flybridge(8) Bow deck lights, waterproofStainless steel watertight Engine Room doorHarness tracks installed on hard top for crew maintenanceFresh water washdown for anchor and chain system rinses as you retractZodiac 8 man new 6/14Winslow 6 manMarquipt Sea Stairs 7 stepsQuick Lift 2000 lb. davit w/ rotationHeadhunter waste treatment system

## Tender

16' Nautica tenderHigh Octane Yamaha 60HP 4 StrokeGarmin 541 GPSVHF Standard HorizonSkeg GuardTowing BracketCustom Stainless Steel Seat HingesLED LightsCover

## Exclusions

- **Owner's Personal Effects**
- **(2) 2015 Yamaha scooters**
- **White lounge chairs on upper aft deck**
- **Umbrella**
- **Bicycles in engine room**
- **Life raft**

## Exclusions

Owner's personal belongings.

## Disclaimer

The Company offers the details of this vessel or yacht in good faith but cannot guarantee or warrant the accuracy of this information nor warrant the condition of the vessel. A buyer should instruct his representatives, agents, or his surveyors, to investigate such details as the buyer desires validated. This vessel or yacht is offered subject to prior sale, price change, or withdrawal

without notice.



# PHOTOS

## Salon



## Dining Area



## Galley



## Master Stateroom



## Helm



## Salon

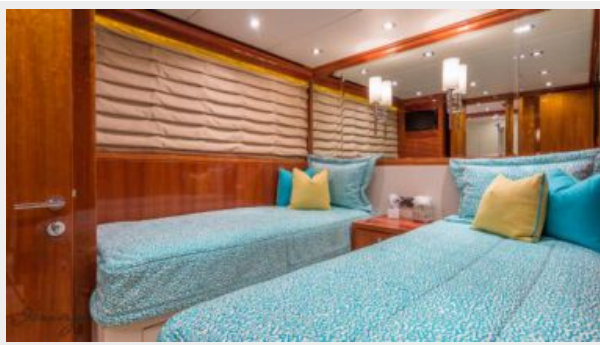




**Salon****Dining Area****Dining Area****Dining Area****Galley****Galley****VIP Stateroom****VIP Stateroom**

**VIP Stateroom****VIP Stateroom/VIP Head****VIP Shower****Master Stateroom****Master Head****Master Stateroom**



**Master Head****Guest Staterooms****Guest Stateroom****Guest Stateroom****Guest Head****Guest Head**

**Guest Shower**



**Companionway**



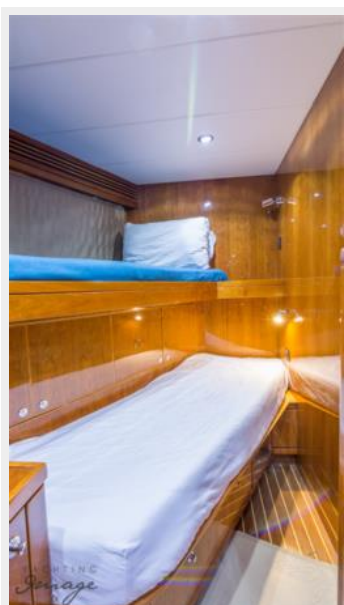
**Captain's Stateroom**



**Crew Quarters**



**Crew Quarters**



**Crew Lounge**





**Pilothouse**



**Pilothouse**



**Flybridge Helm**



**Flybridge Helm**



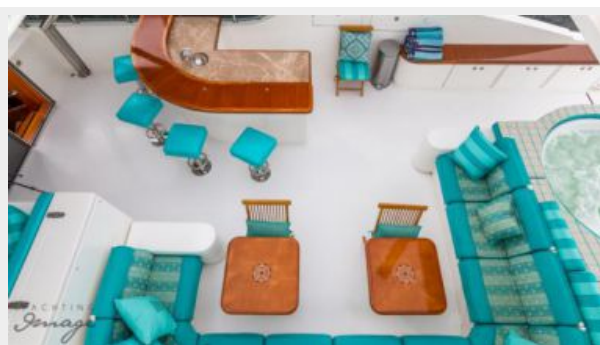
**Flybridge**



**Flybridge**

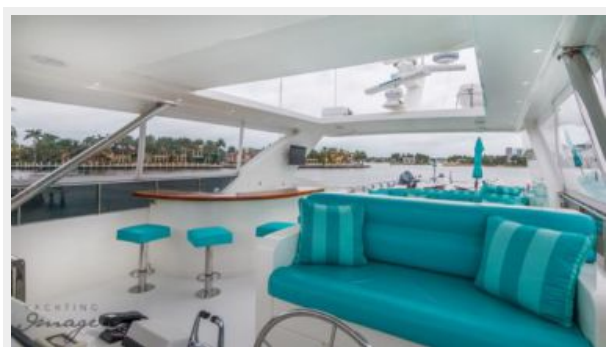


**Upper Deck Seating**



**Upper Deck Seating**



**Upper Deck Seating****Upper Deck Bar****Upper Deck Seating and Jacuzzi****Upper Deck****Upper Deck****Upper Deck Dining/Lounge Area****Flybridge****Flybridge**



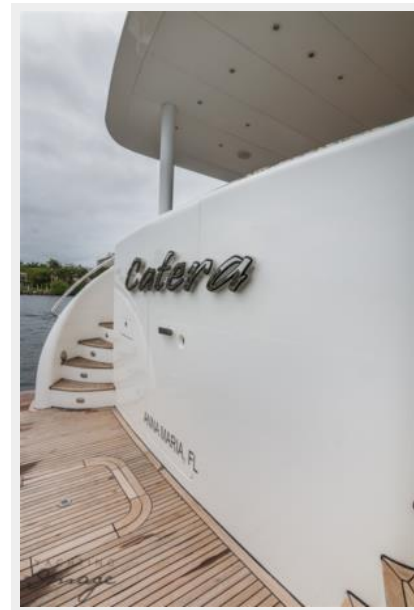
**Tender/ Mopeds****Aft Deck Seating/Dining****Aft Deck Seating/Dining****Aft Deck Seating/Dining****Aft Deck Seating/Dining****Swim Platform**



**Transom**



**Transom**



**Forward Deck Seating**



**Bow Profile**



**Engine Room**



**Engine Room**



Engine Room



Engine Room



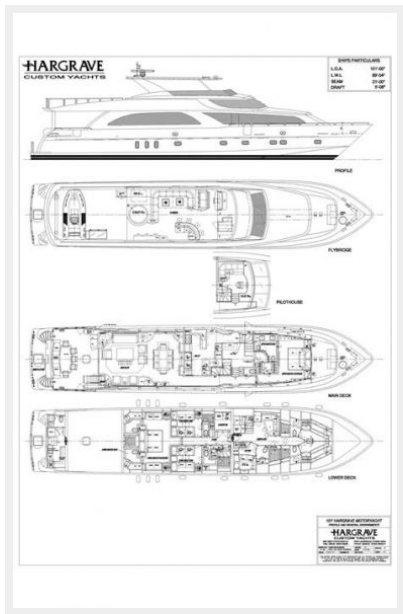
Engine Room Entrance



Lazarette



Layout



Profile Port





**Profile Starboard****Profile Starboard****Profile Starboard****Profile****Profile Aft**

# CONTACTS

---

Andrey Shestakov, leading yacht broker of the sales department of Shestakov Yacht Sales Inc. Shestakov Yacht Sales Inc., the official representative of the Miami/Fort Lauderdale FL headquarters.

## Contact details

---

Email: **andrey@shestakovyachtsales.com**

Web: [shestakovyachtsales.com/en/](http://shestakovyachtsales.com/en/)

## Telephones

---

USA: **+1(954)274-4435**

## Office hours

---

Monday – Saturday: **9:00 - 21:00 EDT**

Sunday: **closed**

## Address

---



Harbour Towne Marina, 850 NE 3rd St,  
STE 213, Dania, FL 33004