

## CATERA — HARGRAVE



**Судостроитель:** HARGRAVE

**Год постройки:** 2010

**Модель:** Моторная яхта

**Цена:** ЦЕНА ЯХТЫ ПО ЗАПРОСУ

**Местонахождение:** United States

**Длина общая:** 101' 0" (30.78m)

**Ширина:** 21' 0" (6.40m)

**Макс. осадка:** 5' 8" (1.73m)

**Крейс. скорость:** 15 Kts. (17 MPH)

**Макс. скорость:** 20 Kts. (23 MPH)

Купить **Catera — HARGRAVE** а также выбрать подходящую вам яхту из нашего каталога яхт вам поможет опытный яхтенный брокер Андрей Шестаков. На сегодняшний день компания **Shestakov Yacht Sales Inc.** имеет большое количество яхт в собственном списке продаж, а также тесно сотрудничает со всеми крупными яхтенными производителями по всему миру.

Для того чтобы купить яхту **Catera — HARGRAVE** а также проконсультироваться по любому вопросу связанному с покупкой, продажей, чартером яхт позвоните по телефону **+7(918)465-66-44**.

# ОГЛАВЛЕНИЕ

---

ОГЛАВЛЕНИЕ	2
ХАРАКТЕРИСТИКИ	6
Обзор	6
Основная информация	6
Размеры	6
Скорость, вместимость и масса	7
Размещение	7
Корпус и палуба	7
Информация о двигателе	7
ПОДРОБНОЕ ОПИСАНИЕ	8
Recent Upgrades	8
Accommodations	8
Salon	8
Galley	9
Master Stateroom	9
Lower Foyer & Laundry Room	10
VIP Stateroom/Lower Deck Master	10
Guest Staterooms	10
Crew Staterooms	10
Electronics	11
Audio & Visual Equipment	12
Engine & Mechanical	13
Flybridge	13
Aft Deck	14
Interior Equipment	14
Exterior Equipment	14
Tender	15
Exclusions	15

Исключения	15
Отказ от ответственности	15
ФОТОГРАФИИ	17
Salon	17
Dining Area	17
Galley	17
Master Stateroom	17
Helm	17
Salon	17
Salon	18
Dining Area	18
Dining Area	18
Dining Area	18
Galley	18
Galley	18
VIP Stateroom	18
VIP Stateroom	18
VIP Stateroom	19
VIP Stateroom/VIP Head	19
VIP Shower	19
Master Stateroom	19
Master Head	19
Master Stateroom	19
Master Head	20
Guest Staterooms	20
Guest Stateroom	20
Guest Stateroom	20
Guest Head	20
Guest Head	20

Guest Shower	21
Companionway	21
Captain's Stateroom	21
Crew Quarters	21
Crew Quarters	21
Crew Lounge	21
Pilothouse	22
Pilothouse	22
Flybridge Helm	22
Flybridge Helm	22
Flybridge	22
Flybridge	22
Upper Deck Seating	22
Upper Deck Seating	22
Upper Deck Seating	23
Upper Deck Bar	23
Upper Deck Seating and Jacuzzi	23
Upper Deck	23
Upper Deck	23
Upper Deck Dining/Lounge Area	23
Flybridge	23
Flybridge	23
Tender/ Mopeds	24
Aft Deck Seating/Dining	24
Aft Deck Seating/Dining	24
Aft Deck Seating/Dining	24
Aft Deck Seating/Dining	24
Swim Platform	24
Transom	25

---

Transom	25
Forward Deck Seating	25
Bow Profile	25
Engine Room	25
Engine Room	25
Engine Room	26
Engine Room	26
Engine Room Entrance	26
Lazarette	26
Layout	26
Profile Port	26
Profile Starboard	27
Profile Starboard	27
Profile Starboard	27
Profile	27
Profile Aft	27
<b>КОНТАКТЫ</b>	<b>28</b>
Контактная информация	28
Телефоны	28
Время работы	28
Адрес	28

# ХАРАКТЕРИСТИКИ

## Обзор

From the moment you step aboard, you will be amazed by the abundance of space this 101 foot yacht provides. She offers an inviting atmosphere for friends and family to gather together both in celebration and in everyday living. "Catera" offers a welcoming and relaxed spirit while encompassing a modern and highly desirable lifestyle. ***This yacht features two master staterooms, one on deck and one below.*** The yacht provides ample space for entertaining guests on the aft deck, flybridge, or main salon. The ***crew quarters*** features a 3 stateroom, 3 head crew quarters with a crew lounge which you would typically see on a much larger yacht. A La Mer Inc. interior and exterior soft goods were completely updated in 2013 with a cost of over \$200,000. Call today for more information or to schedule a showing on this beautiful 101' Hargrave.

**CAT Platinum Plus Extended Service Coverage until May 2018.**

## Основная информация

Тип судна: Моторная яхта

Модельный год: 2010

Год постройки: 2010

Страна: United States

## Размеры

Длина общая: 101' 0" (30.78m)

Длина по ватерлинии: 91' 0" (27.74m)

Ширина: 21' 0" (6.40m)

Макс. осадка: 5' 8" (1.73m)

Трапы: 32' 0" (9.75m)

Длина привального бруса: 101' 0"  
(30.78m)

## Скорость, вместимость и масса

---

**Крейс. скорость:** 15 Kts. (17 MPH)

**Макс. скорость:** 20 Kts. (23 MPH)

**Водоизмещение:** 108000 Pounds

**Вместимость воды:** 600 Gallons

**Вместимость сточного бака:** 200 Gallons **Объем топливного бака:** 3200 Gallons

## Размещение

---

**Всего кают:** 4

## Корпус и палуба

---

**Материал корпуса:** Fiberglass

## Информация о двигателе

---

**Производитель:** Caterpillar

**Модель:** C-32

**Тип двигателя:** Inboard

**Тип топлива:** Diesel

---

# ПОДРОБНОЕ ОПИСАНИЕ

---

## Recent Upgrades

---

- 
- Garmin 8530 with 2 GRID remotes on flybridge and pilot house
- Garmin XM weather
- Fusion audio system with remotes on fore and aft deck, all new wiring, JL audio amp and JBL marine speakers
- EZ2CY enclosure
- 5 Lumishore TIX 601 LED underwater lights
- Machinery space detailed with awlgrip paint
- Galley and passage way wood floors refinished with scratch resistant and ding proof coating
- Whisper quiet frequency drives added to master AC blower fans
- New bottom paint and propspeed on all running gear
- Fins dropped and serviced
- Watermaker membranes replaced
- Cutlass bearings replaced
- New software programming installed on all 4 chillers
- 

## Accommodations

---

The yacht easily accommodates 8 overnight guests in 4 large staterooms and creates opportunities to travel, entertain and enjoy life's adventures surrounded by family & friends. The layout features an ondeck master suite, a second full beam master suite below and two guest suites. Outstanding crew quarters are below and forward w/three cabins, three heads, walls of storage closets, separate washer dryer units and full crew lounge with refrigerator, and TV. Commercial quality galley with dual work stations and double appliances as well.

## Salon

---

The main salon features beautiful cherry gloss and camphor burl. The salon layout is designed with contemporary angled cabinetry that provides an abundance of counter space and storage. The 45 degree angles are mirrored in the main salon and dining ceiling soffits. Inside the soffits is a band of beveled mirrors that give the illusion of a much higher ceiling; not that this Hargrave needs it, as the ceiling height is over 7'. The furniture is plush with straight lines and enough room to lounge in any position. The overall mood is clean, modern and very comfortable. There is cherry gloss crown molding throughout the main salon with the A/C system streamlined



throughout, hidden using the crown molding. This salon has top brass jasmine chrome sconces, chrome Cantaluppi and Sonneman pendant island dining chandelier. The door hardware is chrome. The window treatments are Roman shades of R.M. Coco Longitude linen fabric. The port aft corner houses a 50" Sharp, Apple TV, and complete AV system including Blu Ray, DVD, and Marantz surround sound system. Salon is loaded with usable storage space, and storage for a china set for up to ten (10) guest and two (2) wine coolers. New Carpet in salon. (2) wine coolers in salon

## Galley

Forward of the main salon is the working style/commercial galley. This area was designed so that each member of the crew working in the galley has their own area specifically designed for the prep he or she is doing. There is a cooking and prep area for the chef with enough countertop space to plate 12 dinners; a prep area for the sous chef; a coffee and dessert area; and a clean up area with dishwasher. Four completely separate areas that all work together in perfect harmony for the preparation and sequence of a meal. There is a chef's sink in this prep area accessible from the cooking area or prep area. There is a second sink next to the dishwasher and across from the coffee/dessert prep area. The full height backsplash in the galley area is polished stainless steel which looks like mirror and really expands the space. The counter-tops are Black Galaxy granite, with flecks of silver, gold, and black. The cabinets are the same finish and quality as the salon, cherry gloss, and all the appliances are stainless steel. There are three separate pantries in this area providing plenty of room for food and dry goods storage.

U-Line White Fridge in Crew Quarter  
 GE White Stacked Washer/Dryer in Crew Quarters  
 GE White Washer in Foyer (2)  
 GE White Dryer in Foyer  
 U-Line Black Fridge in Foyer  
 Kenmore White Freezer in Aft Crew (2)  
 Sub-Zero S/S Built-In Fridge w/ Freezer Drawers in Galley (port new in 2012)  
 GE Profile Cooktop w/ Profile S/S Oven in Galley  
 Broan Hood in Galley  
 Broan w/ (2) Transition in Galley  
 GE Profile Oven in Galley  
 GE Profile S/S Microwave in Galley  
 GE Profile Dishwasher in Galley (2)  
 GE Disposals in Galley  
 Avanti S/S Ice Maker in Salon  
 U-Line White Fridge at Aft Deck  
 U-Line White Ice Maker at Aft Deck - New 2013  
 U-Line White Fridge in Flybridge  
 U-Line White Ice Maker in Flybridge  
 Lazy Susan corner lower cabinet in galley  
 Stainless backsplash above cooktop in galley (2)  
 Farke stainless sinks in galley  
 Instant Hot Dispenser in galley

## Master Stateroom

The on-deck master stateroom is forward of the galley and day head. As you enter this on deck master there is a walk-in closet. The king bed is positioned in the center of the room a large storage area that is accessed by opening the hidden-hinged, headboard. The 42" TV with surround sound is located centered aft on the aft wall with a DVD player, its own separate stereo system. She also has a comfortable settee on her port side.

The ensuite bath has its entrance on the port side of the vessel, opposite the starboard entrance

so there is more privacy in the bath area. The marbles are a beautiful, rich and creamy color with little fossils visible in the Pearlato Suevo and an Emperadora Light which is a mocha tone. The large bath is appointed with double classic rectangular basins with lots of counter space inbetween. There is a shower with (3) sides of glass that is bright and elegant in the corner. This spacious bath also boasts a vanity area with several drawers.

---

## Lower Foyer & Laundry Room

---

On the starboard hallway of the main deck are the stairs to the guest foyer. At the bottom of the stairs is an elegant Cherry and Camphor burl foyer console and mirror. This console cabinet splits in the middle and doubles as the doors that disguise the laundry station. The laundry room has an extra-large washer and (2) large dryers. When the guests are not on board, as in a turnover, the laundry doors are meant to be left open to increase the workspace. There is a countertop for folding and a cabinet for all of the washing necessities. The area has a special booster AC unit that keeps the laundry room from heating up the guest area.

---

## VIP Stateroom/Lower Deck Master

---

The lower deck master is a full beam stateroom with spacious walk area and a settee on the port side. His and her closets with one equipped with a combination safe. The wall behind the upholstered king headboard is mirrored with sconces at the bedside to make the open space welcoming and inviting. The portholes are large with elegant double window treatments with a combination of sheers and blackout. She has a 40" Sharp TV, DVD player, Surround sound, DVR recorder and separate stereo sys

His and her bath share a spacious shower midship. The semi-recessed curved sinks set in the Perlato Suevo marble vanity top mirror each other from port to starboard. The floor of the heads is Emperador Dark Marble slab floor with a double border in Perlato Suevo and Emperador Dark Marble.

---

## Guest Staterooms

---

The two guest suites each have convertible beds that can either be made up easily as queen beds or as two (2) beds. Each guest suite has ample storage with a hanging locker and drawers underneath. Both port and starboard staterooms have its own private shower/ensuite head and wall mounted TV.

---

## Crew Staterooms

---

Crew accommodations were uniquely designed to accommodate private and charter use. The

crew quarters allow for up to (6) crew members, as needed. Access to the crew area is forward on the port side of the galley and down a short flight of stairs. Once down these stairs, you are greeted by an outstanding crew lounge that rivals yachts of a much larger size. There is a large settee with TV, DVD player, and refrigerator for relaxing when the crew is off. This area also boasts five (5) large floor to ceiling cabinets for storage and second laundry station that has large, stacked washer/dryer for crew. There are (3) double crew staterooms each with it's own head and shower. The captain's stateroom has a queen size bed, large hanging locker, dresser, small desk, 40" Samsung TV, and Network to ships navigation system. There is also an audible anchor drag system with speakers for the crew lounge and Captain's stateroom. A hidden watertight door allows crew to easily access the lower guest accommodations. The crew area is finished in the same quality as the rest of the yacht and all heads have marble vanities and shower seats. It is hands down the most comfortable crew area of any yacht in Catera's class.

## Electronics

(4) Masters 24V power supply mounted in Lower Helm  
 Furuno 12kW mounted in Lower Helm  
 Furuno Target Plotter mounted in Lower Helm  
 Furuno DFF1 Digital Network Sounder VX2 mounted in Lower Helm  
 Furuno 600W BRZ TH w/ Block mounted @ Hull  
 Furuno 8 Port Ethernet Switch mounted in Lower Helm  
 (4) Furuno Network Hub Adapter Cable mounted in Lower Helm  
 Simrad AP 25 w/ AC20 & RPU 80 mounted in Lower Helm  
 (2) Raymarine ST 60+ Depth Display mounted in Lower Helm  
 (2) Raymarine Transducer B45 Long w/Fair Blk mounted @ Hull  
 Raymarine ST 60 + Speed System mounted in Lower Helm  
 Raymarine ST 60 \_ Wind System w/ 50M Cable mounted in Lower Helm  
 ICOM IC-M604 Black mounted in Lower Helm  
 ICOM Command MIC III black mounted in Lower Helm  
 (2) Newmar Hailer Horn 60/40 mounted @ Hard Top  
 Furuno GP DGPS+WAAS combination mounted in Lower Helm

Glass Bridge custom Master computer, 24V mounted in Lower Helm- \$7,000-  
 Upgrade Keyboard/Mouse Interlink mounted in Lower Helm  
 Nobeltec Admiral 9.0/ Upgraded Nor-Tech Trident \$2,000.00  
 Nobeltec passport Deluxe US Region Florida East Coast & Keys  
 Nobeltec Passport Deluxe Bahamas Reg-9  
 Brother MFC color fax, printer, scanner  
 Pelco 2 CAM system 1 PTZ @ ER fixed @ Aft Deck- Security Recorder for all Cameras  
 (200) Pelco Simon CAM Cable PTZ @ ER fixed @ Aft Deck - Security Recorder for all Cameras  
 Furuno FA 150 AIS system mounted in Lower Helm  
 Digital 500 Series 4' Marine AIS mounted @ Hard Top  
 Furuno FA 150 ANT Ext 15M mounted @ Hard Top  
 ACR RCL 100B 24V Spotlight system Lower Helm & Upper Helm  
 Furuno 15" LCD Color Display mounter in Upper Helm - PIP to Cameras  
 Furuno 1934 CBB NT Radar/Plotter mounted in Upper Helm  
 Anchor Alarm Installed in Crew Quarters  
 Simrad AP 25 Second Station mounted in Upper Helm  
 Raymarine ST60+Depth Display mounted in Upper Helm  
 Raymarine ST60+Graphic Display mounted in Upper Helm  
 ICOM IC-M604 Black mounted in Upper Helm  
 ICOM Command MIC III Black mounted in Upper Helm  
 Furuno 15" LCD Color Display mounted in Upper Helm for Radar & Master Computer  
 Nauticomp Mouse, Panel Mount mounted in Upper Helm  
 ACR Second Station Control Kit mounted in Upper Helm  
 Panasonic PH 824 Adv Hybrid KSU  
 Panasonic PH 824 Ext Card  
 Panasonic Ph 824 Fax Detect/ OGM Card  
 (8) Panasonic PH T-7731-B Speaker Phone  
 (2)

Panasonic PH Cordless Multiline(11) Panasonic PH Programming chargeKVH Tracphone  
 F33KVH M7 Control Panel- Upgrade for US/Carribbean(2) Tropica 5" KVH T4/G4 Tower  
 MountNewmar 32-12 converter 50 AMP

## Audio & Visual Equipment

- 50" Sharp TV wall mounted in salon
- Apple TV network to Salon TV
- Marantz SR5002 7.1 Home Theater mounted in Salon
- Zone 2 Amp 235W mounted in Salon
- (6) Sonance Symphony TL 621R Thinline Ceiling mounted in Salon overhead
- Sonance son of Sub 10" SW mounted in Salon
- Sharp LCD Blu Ray Player mounted in Salon
- Direct TV HD DSS Receivers - USA/Carribbean Independently Wired to all Recievers through-out the yacht-\$22,000 Upgrade
- APC 500VA Smart Rack mount UPS mounted in Salon
- IR Expansion mounted in Salon
- Middle Atlantic Sliding Rail Rack mounted in Salon
- Sonance SS6VC 6 Pr. Speaker Volume Selector Audio @ Dining, Galley, and Pilothouse
- Vimar 110V outlet waterproof mounted @ Aft Deck
- Vimar Composite outlet waterproof mounted @ Aft Deck
- Sonance Symphony TL 621R Thinline ceiling mounted in Dining area
- Vimar volume control w/ Chrome bezel mounted in Dining area
- Sonance Symphony TL 621R Thinline ceiling mounted in Pilothouse
- Vimar volume control with Chrome Bezel mounted in Pilothouse
- Sonance Symphony TL 621R Thinline ceiling mounted in Galley
- Vimar volume control with Chrome Bezel mounted in Galley
- Vimar volume control with Chrome Bezel mounted in @Flybridge
- Vimar 110V outlet waterproof mounted @ Flybridge
- Vimar Composite outlet waterproof mounted @ Flybridge
- (2) Sharp LCD 42" bottom speakers mounted in Master & On Deck Master
- (2) Peerless Universal Mount mounted in Master & On Deck Master
- (2) Direct TV HD DSS, DVR receivers mounted in Master & On Deck Master
- NAD L54 DVD/CD receiver mounted in Master & On Deck Master
- (2) IR expansion mounted in Master & On Deck Master Full Surround Sound system with IPOD docking in Master
- (3) Sonance Symphony TL 621R Thinline ceiling mounted in Master & On Deck Master - Master Stereo System
- (5) Sharp LCD 20" TV Slim Black mounted in Port SR, Starboard SR, Crew -Lounge, Crew Starboard SR and Port Quarters SR.
- 40" Samsung TV, DVD, Blu-Ray and Network to Navigation to Stateroom system in Captains Stateroom
- (5) Direct TV DSS receiver mounted in Captain, Guests & Crew - Caribbean/USA

- (5) 110V DVD player mounted in Captain, Guests & Crew
- (5) IR expansion mounted in Captain, Guests, & Crew
- TV distribution board
- (7) RG6 for TV system
- Vizio 32" on Flybridge - Feb 2015
- LG 42" on Aft Deck - Feb 2015

## Engine & Mechanical

Twin Caterpillar C-32 1675HPCAT Platinum Plus Extended Service Contract until May 2018  
 Fresh water filling faucet in Engine room  
 230v, 115v and 60Hz Electrical System  
 Color coded wiring throughout  
 (8) 200 amp/hr batteries for engine & ship power - Deka D-8 Batteries  
 Separate 120 amp/hr batteries (2) for generators - Gel Cell Batteries  
 All batteries in FRP battery boxes  
 Main electrical panel w/ separate AC Power control and circuit breaker panel  
 AC Cruise Air Chilled Water System 12 tons- Upgrade Soft Start System  
 Dolphin 24v AC/DC light transformer 100 AMP (3)  
 Mufflers for Main Engine By-Pass  
 Double insulated engine room  
 Naiad stabilizer system Model 302 with 12 sq ft. fins- serviced Aug 2015  
 Multisea II Control System  
 Double steering backup pump on PTO of port & starboard engine  
 Naiad 16ht Proportional Hydraulic Bow Thruster  
 Delta T System

Sea Fire Automatic Fire Extinguisher System  
 Phazer 40 kW 60Hz Generators (2) with soundshield water drop exhaust- Port 5,255 hours, Starboard 5,168 (read 10/6/16)  
 Maxwell VC3500 Stern Winch (2) NEW 2012  
 Double Racor filters on main engines  
 Hot Circulating Water Pump  
 Water Tank capacity - 600 gal.  
 Water Heaters - 30 Gallons each (2)  
 Sea Recovery Inc. Aquamatic 1800 PD water maker - membranes replaced 4/15  
 Anchor 250lb in hull w/ mounted Maxwell VWC 4000 DC Windlass (1) with Freshwater washdown  
 (2) Glendinning CM-8 100Amp Cablemasters port and starboard  
 100 amp shorepower plugs (2) at transom and (1) forward.  
 Glendinning controls upper and lower station with two remotes and a hand held remote station at stern.  
 Tide Seal Dripless Rudder Logs and shaft  
 Jabsco Emergency Bilge Pump 18330  
 Mastervolt battery chargers: 1-80Amp (24V) / 1-30Amp (24V) / 1-30Amp (12V)  
 Safety Handrails around perimeter of main engines  
 Reverso Oil Change Pump for engines, transmissions and generators  
 Leeson 24V Fuel Transfer Pump (C4D17FK9B)- DC back-up pump

•

## Flybridge

The Flybridge features everything! Both the huge horseshoe seating area on the port side and the bar with its teak edged light marble top and seating for four at the bar gives plenty of open space to gather during the day or the evening to enjoy your time on the water. There is a sunpad for sunbathing next to the jacuzzi. The convertible ceiling/top that electronically opens on sunny days and starry nights only enhance the spaciousness of this outdoor living area. There are two teak cocktail tables with sun dial inlays and cross-grained patterns in front of the horseshoe

seating area. There is a ton (11') of storage on the starboard side of the F/B and a large gas grill to port aft of the sunpad. Two front gate lounge chairs with covers and all upholstery re-done with quick dry foam a \$60,000 upgrade.

## Aft Deck

---

The aft deck easily can handle a big crowd. The fabrics are in shades of aqua, light green and blue. The beautiful teak dining table has curved sides and straight ends, a very modern twist for the aft deck. Seating for 8 -10 people around a teak table with full covers for the table and chairs. She also has NEW 42" LG TV with cover, U-Line Icemaker, and fridge and LED dimming lighting.

## Interior Equipment

---

Columns (2) in Salon  
Columns (2) under soffit and (2) half round columns to bed in deck  
Master  
Kohler Caxton Biscuit sinks in On Deck Master, Port & Starboard, Master (2), Capt, Crew and Day head  
Awlgrip finish in shower stalls  
6- cherry frame w/ mirror for forward console top in salon  
Granite floors in day head & On Deck Master guest head  
Marble Shower seat in starboard guest

Marble bathroom floor in starboard guest  
Marble Shower seat in port guest  
Marble bathroom floor in port guest  
Marble Shower walls in On Deck Master head  
Marble Shower seat in On Deck Master guest  
Marble bathroom floor in On Deck Master guest  
Marble Shower seat in starboard crew  
Marble Shower seat in port crew  
Marble Shower seat in Captain  
Marble bathroom floor in Lower Deck Master  
Marble floor behind the bar in Main Salon  
Marble on shower walls, seat & floor in Lower Master Head  
Marble/Granite on forward console top in Salon  
Split berths slide together in starboard and port guest cabins to make full sized bed  
(10) Headhunter heads throughout with 2 x 110 volt pumps and 24v pump  
Vimar Electrical switches with (9) dimmers- 3 NEW Aft Deck Dimmers added  
Nutone central vacuum system w/ 8 outlets  
Owner safe in master cabin  
Grohe plumbing fixtures and hardware  
(8) Sconces in main salon  
Interior stairway with handrails from Pilothouse to flybridge  
Majilite upholstered walls in specified areas.  
Frameless Glass Shower doors in Port and Starboard Guest and On Deck Master  
Mirror wall in Day Head  
Mirror ceiling in Day Head  
Mirror ceiling in On Deck Master  
Mirror ceiling in Master Bath  
Table on slides in crew area  
(2) Bar stools in crew area  
Crown molding in Lower Foyer, Port Guest, Starboard Guest, On Deck Master, Master Day head, Pilothouse, & Salon  
Concealed doors in lower foyer with laundry center hidden behind  
(2) storage lockers under stairway in foyer  
Clear glass shelves with chrome supports in Salon  
Glass top for Main Salon cocktail table  
Bottle storage in Main Salon  
Pneumatic sliding hatch powered by air compressor from Pilothouse to Flybridge  
Flybridge  
Flybridge starboard counter top is teak with high gloss finish

## Exterior Equipment

---

Painted flybridge decks with nonskid Fiberglass hardtop with retractable roof and mast opening  
Single masthead light on hard top  
Hargrave style mast  
Marble Bar top on Flybridge  
Compass roses for Flybridge tables  
Hi-Lo table bases for Flybridge tables  
Custom wet bar  
Aft Deck table on slide

Aft deck seating (5) aft deck teak chairs  
Locker for boarding ladder  
U-shaped hand rails on Swim Platform  
U-shaped hand rails in Flybridge  
Access hatch on aft deck to crew pull down w/ ladder  
Enlarged aft deck hawasers openings with rollers  
Stainless corner hawse pipe with roller and cleat at port & starboard side of aft deck  
Kahlendberg air horn  
Quartz floor lights  
FRP BBQ cabinet with gas grill  
GFI at Helm console and BBQ on Flybridge  
Jacuzzi on flybridge  
Quick dry foam seating/sunpad  
Wet Bar on Flybridge with (4) bar stools - New Upholstery 2013  
Additional wet bar for fridge and ice maker in Flybridge  
(8) Bow deck lights, waterproof  
Stainless steel watertight Engine Room door  
Harness tracks installed on hard top for crew maintenance  
Fresh water washdown for anchor and chain system rinses as you retract  
Zodiac 8 man new 6/14  
Winslow 6 man  
Marquipt Sea Stairs 7 steps  
Quick Lift 2000 lb. davit w/ rotation  
Headhunter waste treatment system

---

## Tender

16' Nautica tender  
High Octane Yamaha 60HP 4 Stroke  
Garmin 541 GPS  
VHF Standard Horizon  
Skeg Guard  
Towing Bracket  
Custom Stainless Steel Seat Hinges  
LED Lights  
Cover

---

## Exclusions

- **Owner's Personal Effects**
- **(2) 2015 Yamaha scooters**
- **White lounge chairs on upper aft deck**
- **Umbrella**
- **Bicycles in engine room**
- **Life raft**

---

## Исключения

При продаже яхты исключаются личные вещи владельца.

---

## Отказ от ответственности

Компания предоставляет описание судна или яхты добросовестно, но не может гарантировать точность этой информации, а также не ручается за техническое состояние. Покупатель должен проинструктировать своих агентов или оценщиков исследовать представленную информацию более подробно, по собственному желанию.

Продажа судна или яхты, изменение цены или снятие с продажи будет происходить без предварительного уведомления.



# ФОТОГРАФИИ

**Salon**



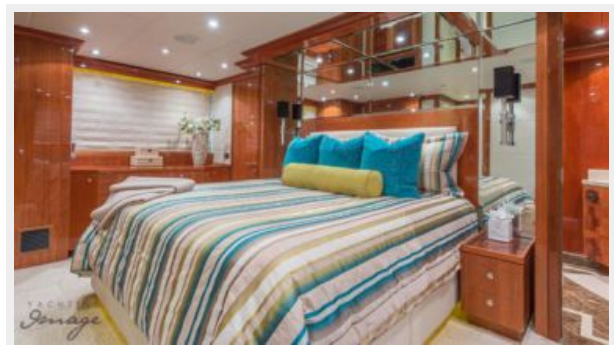
**Dining Area**



**Galley**



**Master Stateroom**



**Helm**



**Salon**



Salon



Dining Area



Dining Area



Dining Area



Galley



Galley



VIP Stateroom



VIP Stateroom



**VIP Stateroom**



**VIP Stateroom/VIP Head**



**VIP Shower**



**Master Stateroom**



**Master Head**



**Master Stateroom**



**Master Head**



**Guest Staterooms**



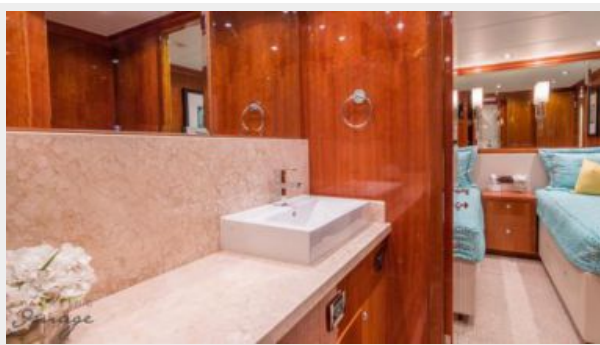
**Guest Stateroom**



**Guest Stateroom**



**Guest Head**



**Guest Head**



**Guest Shower**



**Companionway**



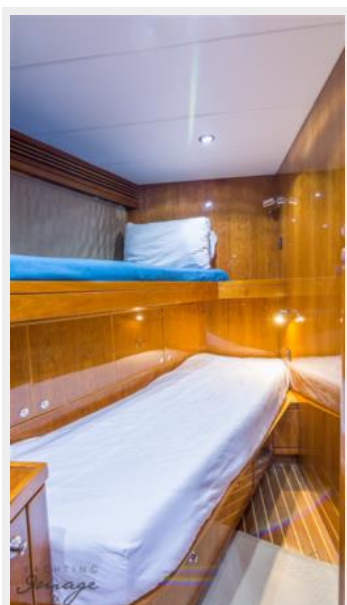
**Captain's Stateroom**



**Crew Quarters**



**Crew Quarters**



**Crew Lounge**



**Pilothouse**



**Pilothouse**



**Flybridge Helm**



**Flybridge Helm**



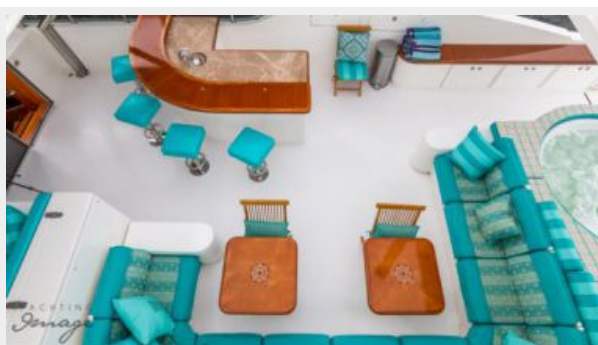
**Flybridge**



**Flybridge**



**Upper Deck Seating**



**Upper Deck Seating**



**Upper Deck Seating**



**Upper Deck Bar**



**Upper Deck Seating and Jacuzzi**



**Upper Deck**



**Upper Deck**



**Upper Deck Dining/Lounge Area**



**Flybridge**



**Flybridge**



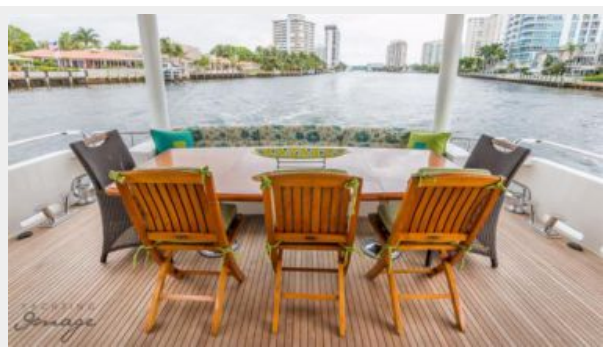
**Tender/ Mopeds**



**Aft Deck Seating/Dining**



**Aft Deck Seating/Dining**



**Aft Deck Seating/Dining**



**Aft Deck Seating/Dining**



**Swim Platform**





**Transom**



**Transom**



**Forward Deck Seating**



**Bow Profile**



**Engine Room**



**Engine Room**



**Engine Room**



**Engine Room**



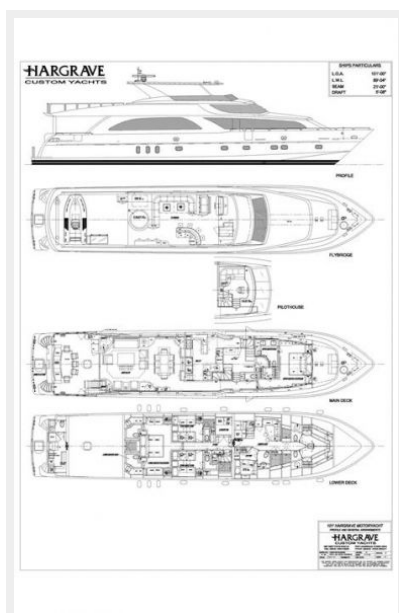
**Engine Room Entrance**



**Lazzaretto**



**Layout**



**Profile Port**



**Profile Starboard**



**Profile Starboard**



**Profile Starboard**



**Profile**



**Profile Aft**



# КОНТАКТЫ

---

Андрей Шестаков (Andrey Shestakov) – ведущий яхтенный брокер отдела продаж яхт и судов компании Shestakov Yacht Sales Inc. Официальный представитель Shestakov Yacht Sales Inc. для русскоговорящих клиентов в центральном офисе компании в Майами/Форт Лодердейл/Флорида/США.

## Контактная информация

---

Email: [andrey@shestakovyachtsales.com](mailto:andrey@shestakovyachtsales.com)

Web: [shestakovyachtsales.com](http://shestakovyachtsales.com)

## Телефоны

---

Краснодарский край: **+7(918)465-66-44**

США, Майами, Флорида: **+1(954)274-4435**

## Время работы

---

Понедельник – Суббота: **9:00 - 21:00**  
EDT

Воскресенье: **Закрито**

## Адрес

---



Harbour Towne Marina, 850 NE 3rd St,  
STE 213, Dania, FL 33004