

TABATA — AZIMUT



Builder: [AZIMUT](#)

Year Built: 2009

Model: Motor Yacht

Price: PRICE ON APPLICATION

Location: United States

LOA: 75' 3" (22.94m)

Beam: 18' 4" (5.59m)

Max Draft: 5' 10" (1.78m)

Our experienced yacht broker, Andrey Shestakov, will help you choose and buy a yacht that best suits your needs **Tabata — AZIMUT** from our catalogue. Presently, at Shestakov Yacht Sales Inc., we have a wide variety of yachts available on our sale's list. We also work in close contact with all the big yacht manufacturers from all over the world.

If you would like to buy a yacht **Tabata — AZIMUT** or would like help answering any questions concerning purchasing, selling or chartering a yacht, please call **+1(954)274-4435**

TABLE OF CONTENTS

TABLE OF CONTENTS	2
SPECIFICATIONS	4
Basic Information	4
Dimensions	4
Speed, Capacities and Weight	4
Accommodations	4
Hull and Deck Information	4
Engine Information	4
DETAILED INFORMATION	5
Engines	5
Tanks	5
Salon	5
Galley	5
Master Stateroom	5
Master Bath	6
VIP Stateroom (forward)	6
VIP Head	6
Guest Stateroom	6
Guest Head	7
FLYBRIDGE	7
Crew cabin	7
Cockpit	7
Additional options	7
Exclusions	8
Disclaimer	8
PHOTOS	9
CONTACTS	18
Contact details	18

Telephones	18
Office hours	18
Address	18

SPECIFICATIONS

Basic Information

Category: Motor Yacht

Model Year: 2009

Year Built: 2009

Country: United States

Dimensions

LOA: 75' 3" (22.94m)

Beam: 18' 4" (5.59m)

Max Draft: 5' 10" (1.78m)

Speed, Capacities and Weight

Displacement: 121254 Pounds

Water Capacity: 303 Gallons

Holding Tank: 108 Gallons

Fuel Capacity: 1585 Gallons

Accommodations

Total Berths: 8

Total Heads: 4

Hull and Deck Information

Hull Material: Fiberglass

Engine Information

Engines: 2

Manufacturer: MAN

Model: V12 Common Rail

Engine Type: Inboard

Fuel Type: Diesel

DETAILED INFORMATION

Engines

Total Power: 2720 HP Engine 1: Engine Brand: MAN Engine Model: V12 Common Rail Engine Type: Inboard Engine/Fuel Type: Diesel Location: Starboard Engine Hours: 700 Engine Power: 1360 HP Engine 2: Engine Brand: MAN Engine Model: V12 Common Rail Engine Type: Inboard Engine/Fuel Type: Diesel Location: Port Engine Hours: 700 Engine Power: 1360 HP

Tanks

Fresh Water Tanks: (303 Gallons) Fuel Tanks: (1585 Gallons) Holding Tanks: (108 Gallons)

Salon

- Two sofas (one on each side)
- Two armchairs
- Coffee table
- TV cabinet with Hi-Lo.
- Lower cabinets on both sides of the port side sofa
- Dining are forward with table and sitting for 8
- Dishware and cutlery storage
- Curtains, leather upholstery and carpet

Galley

- Working top with cooking top and sink.
- Miele four burner electric range with hood and fan
- Convection/microwave oven
- SS refrigerator/freezer
- Dishwasher
- Trash compactor

Master Stateroom

- Big windows on each side.
- Opening porthole on starboard side.
- King bed with mattress, bedspread and pillows
- Drawers under the bed
- Arm chairs and table on starboard side.

- Minibar with refrigerator
- Wardrobe on aft bulkhead

Master Bath

- Shower with bench
- Bidet
- Two Basins
- Mirror, side shelves, cabinet under the basins and side lamps
- Shower with glass door
- Lights on ceiling and in shower
- Opening porthole

VIP Stateroom (forward)

- Bed with mattress, bedspread and pillows
- Drawers under the bed
- Nightstand with drawers
- Wardrobe with drawers
- Wide windows on both sides
- Curtains and carpet

VIP Head

- Sink
- Mirror with side lamps
- Cabinet under the sink
- Shower with glass door
- Lights on ceiling and in shower
- Opening porthole
- Wooden blinds in wood

Guest Stateroom

- Twin berths with mattress, bedspread and pillows
- Drawers under the berths
- One nightstand with drawers
- Indirect lighting on ceiling
- Wardrobe with drawers
- Opening porthole.

- Curtains and carpet

Guest Head

- Sink
- Mirror with side lamps
- Cabinet under the sink
- Shower with glass door
- Lights on ceiling and in shower
- Opening porthole
- Venetian blinds in wood

FLYBRIDGE

- Windscreen
- Pilot console includes: steering wheel, main engines controls, bow thruster control, forward anchor winch control
- Helm seat with storage inside
- Sunbathing area next to helm seat
- C shaped sofa with storage inside
- Bar with sink, fridge and barbeque, storage and trash bin
- Area for tender (max tender length: 4.2m; max tender weight: 500kg/1100lb)
- Electro-hydraulic davit

Crew cabin

- Access hatch on swim platform.
- Crew head with shower.

Cockpit

- Hydraulic hi-low mechanism for the cockpit table.
- Teak table in cockpit.
- Foldable chairs in cockpit.
- Teak laid cockpit and sidewalks.
- Wetbar with fridge.

Additional options

- Hydraulic bow thruster.

-
- hydraulic stern thruster.
 - Kohler generator 22 KW.
 - AC in all cabins and salons.
 - Dimmers for external lights (cockpit and fly)

Exclusions

Owner's personal belongings.

Disclaimer

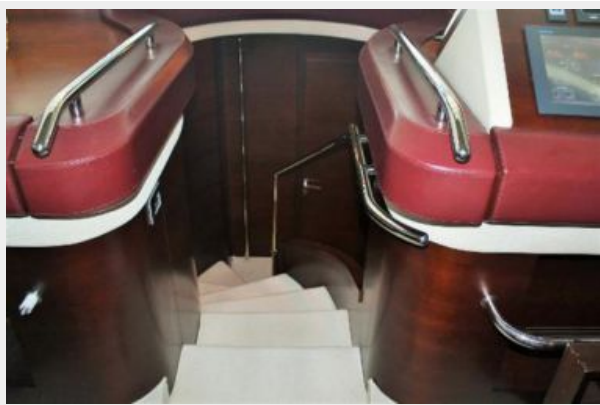
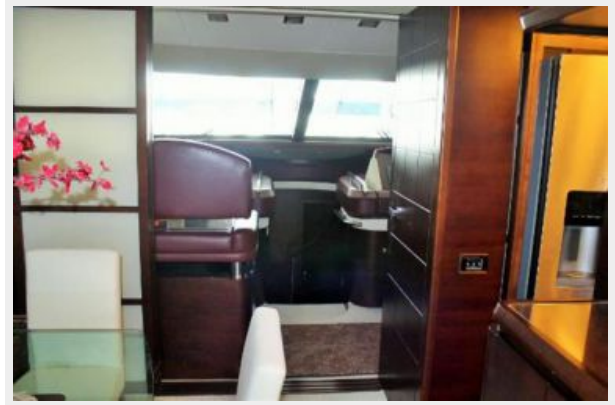
The Company offers the details of this vessel or yacht in good faith but cannot guarantee or warrant the accuracy of this information nor warrant the condition of the vessel. A buyer should instruct his representatives, agents, or his surveyors, to investigate such details as the buyer desires validated. This vessel or yacht is offered subject to prior sale, price change, or withdrawal without notice.

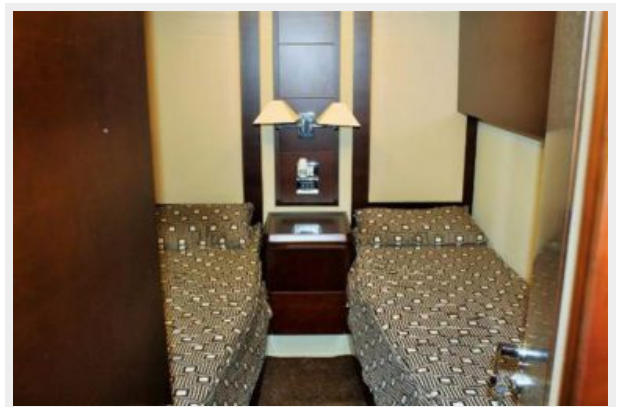
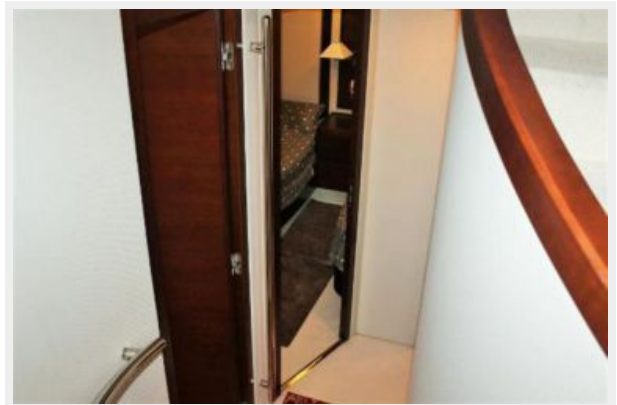
PHOTOS

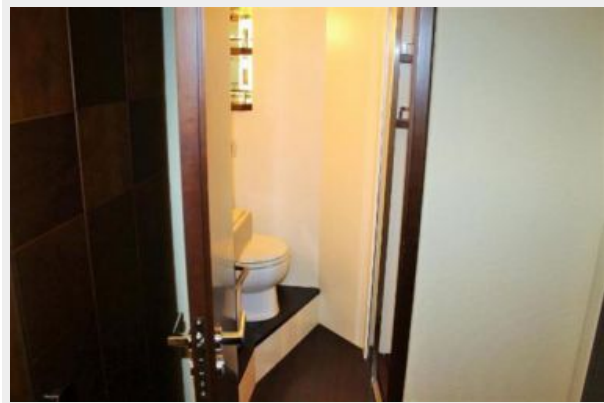


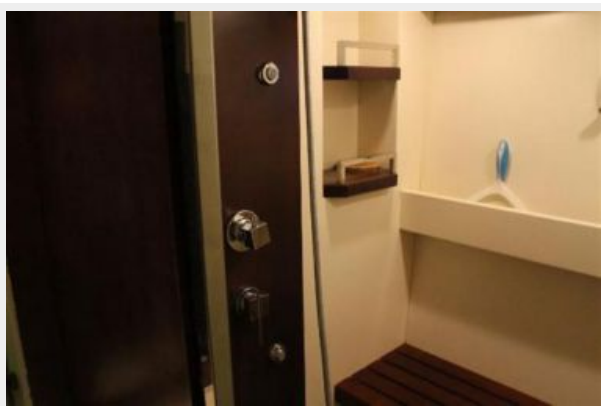


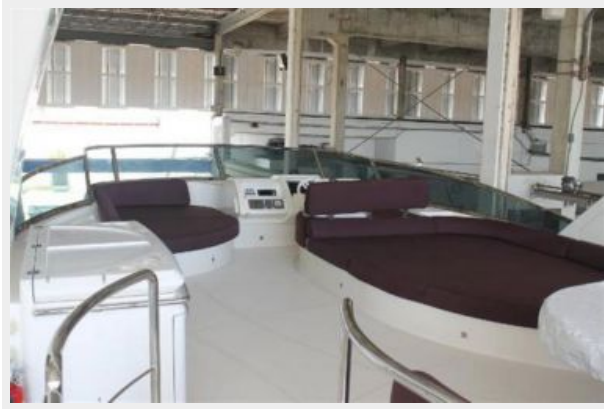














CONTACTS

Andrey Shestakov, leading yacht broker of the sales department of Shestakov Yacht Sales Inc. Shestakov Yacht Sales Inc., the official representative of the Miami/Fort Lauderdale FL headquarters.

Contact details

Email: andrey@shestakovyachtsales.com

Web: shestakovyachtsales.com/en/

Telephones

USA: +1(954)274-4435

Office hours

Monday – Saturday: **9:00 - 21:00** EDT

Sunday: **closed**

Address



Harbour Towne Marina, 850 NE 3rd St,
STE 213, Dania, FL 33004