

BARTENDER — TANSU YACHTS



Builder: [Tansu Yachts](#)

Year Built: 2011

Model: Motor Yacht

Price: PRICE ON APPLICATION

Location: Italy

LOA: 119' 0" (36.27m)

Beam: 24' 3" (7.39m)

Min Draft: 7' 10" (2.39m)

Cruise Speed: 12 Kts. (14 MPH)

Max Speed: 16 Kts. (18 MPH)

Our experienced yacht broker, Andrey Shestakov, will help you choose and buy a yacht that best suits your needs **BARTENDER — Tansu Yachts** from our catalogue. Presently, at Shestakov Yacht Sales Inc., we have a wide variety of yachts available on our sale's list. We also work in close contact with all the big yacht manufacturers from all over the world.

If you would like to buy a yacht **BARTENDER — Tansu Yachts** or would like help answering any questions concerning purchasing, selling or chartering a yacht, please call **+1(954)274-4435**

TABLE OF CONTENTS

TABLE OF CONTENTS	2
SPECIFICATIONS	4
Overview	4
Basic Information	4
Dimensions	4
Speed, Capacities and Weight	5
Accommodations	5
Hull and Deck Information	5
Engine Information	5
DETAILED INFORMATION	6
General	6
Exclusions	6
Disclaimer	6
PHOTOS	7
Owner cabin	9
guest cabin	9
twin guest cabin	9
Guest cabin 2	9
owner bathroom detail	9
Guest bathroom	9
Galley 1	10
Galley 2	10
Crew dinette	10
Utility room	10
Bolier room	10
Engine Room	10
Plans	11
CONTACTS	12

Contact details	12
Telephones	12
Office hours	12
Address	12

SPECIFICATIONS

Overview

The 119-foot (36.4m) custom expedition motor yacht BARTENDER for sale with Northrop & Johnson was built in 2011 by Tansu, which also was responsible for the yacht's rugged, but chic exterior and a luxuriously modern interior. BARTENDER features open, flowing spaces with exceptional interior volume. Large windows further enhance the openness of the interior and chic décor helps set a relaxing and comfortable atmosphere. Five luxurious staterooms, including one owner's suite, two double staterooms and two twin staterooms, are able to accommodate up to 10 guests in world-class style. A crew of seven is able to provide five-star service on BARTENDER. On deck, BARTENDER's open, flowing spaces continue. Aft, a lazarette is able to store an array of equipment, including diving gear and toys. The tenders are exposed, allowing crew easy launching access. When removed, the deck is open and able to be used for sun lounging. The main deck aft offers a comfortable two comfortable alfresco dining tables, one to port and one to starboard, with built-in seating. The upper deck features built-in sunpad seating, which can be covered, and a built-in bar/DJ booth. Well suited for both exploration and luxury living, BARTENDER is a sleek, custom full-displacement yacht with modern stabilization systems, a steel hull and aluminum superstructure. BARTENDER complies with MCA and RINA standards. Awards & Nominations Showboats Design Awards 2012 Interior Design Award: Displacement Motor Yachts 100'-199' Winner Showboats Design Awards 2012 Exterior Design & Styling Award: Displacement Motor Yachts 100'-199' Finalist

Basic Information

Category: Motor Yacht

Sub Category: Expedition

Model Year: 2011

Year Built: 2011

Country: Italy

Dimensions

LOA: 119' 0" (36.27m)

LWL: 115' 5" (35.18m)

Beam: 24' 3" (7.39m)

Min Draft: 7' 10" (2.39m)

Speed, Capacities and Weight

Cruise Speed: 12 Kts. (14 MPH)

Cruise Speed Range: 3000

Max Speed: 16 Kts. (18 MPH)

Water Capacity: 3302.15065 Gallons

Fuel Capacity: 11095.226184 Gallons

Accommodations

Total Cabins: 5

Sleeps: 10

Crew Sleeps: 7

Hull and Deck Information

Hull Material: Steel

Hull Designer: Kerim Acar

Interior Designer: B&B Italy

Engine Information

Engines: 2

Manufacturer: Caterpillar

Model: C32

Fuel Type: Diesel

DETAILED INFORMATION

General

ENGINE MAXIMUM SPEED 15,8 knots CRUISING SPEED 12,5 knots RANGE 3,000 nm @ 12 knots **TANKAGE** FUEL 42,000 litres / 11,095 US gallons FRESH WATER 12,000 litres / 3,170 US gallons GREY/BLACK WATER 9,200 litres / 2,430 US gallons WATER MAKERS Two units 195 litres per hour / 51.5 US gallons per hour **ACCOMMODATION** OWNER AND GUEST 10 x Guests in 5 cabins - 1 x Master, 2 x Double, 2 x Twin CREW 7 x Crew in four cabins plus Captain's cabin **MECHANICAL EQUIPMENT** ENGINES 2 x 1,300 HP CAT C32 Engine hours Port 2001 hours Starboard 1997 hours – at Sept 2015 PROPELLERS Radice STABILISERS Trac Zero Speed 440 BOWTHRUSTER 1 x Trac PUMPS/VALVES/FANS G&R **GENERATORS/ELECTRICITY** 2 x 50 kW Northern Lights Generator hours Gen 1 4260 hours Gen 2 3370 hours –at Sept 2015 SEWAGE SYSTEM Hamann WATERMAKER 2 x Aquamiser (4,680 litres/day) AIR CONDITIONING Marine Air Fresh air ventilation system - Marine Fresh air system 10 units **NAVIGATION & COMMUNICATION EQUIPMENT** NAVIGATION/ELECTRONICS Raymarine SEARCHLIGHTS Sanshin HRX-150 NIGHT VISION SYSTEM FLIR LOUDHAILER Kahlenberg HELM CHAIRS by Crown Ltd **DECK EQUIPMENT** PASSERELLE by Opacmare DOORS AND HATCHES by Freeman CRANES : 2 x Marquipt 2,000 lb **GALLEY & LAUNDRY EQUIPMENT** GALLEY Zanussi INTERIOR/EXTERIOR LIGHTS by Cantalupi **TENDERS & WATERSPORTS EQUIPMENT** 1 x 6.36m RIB with 115 Hp 4-stroke outboard See a video of BARTENDER (ex Nomade) here: <https://youtu.be/SF-0c27KjfA>

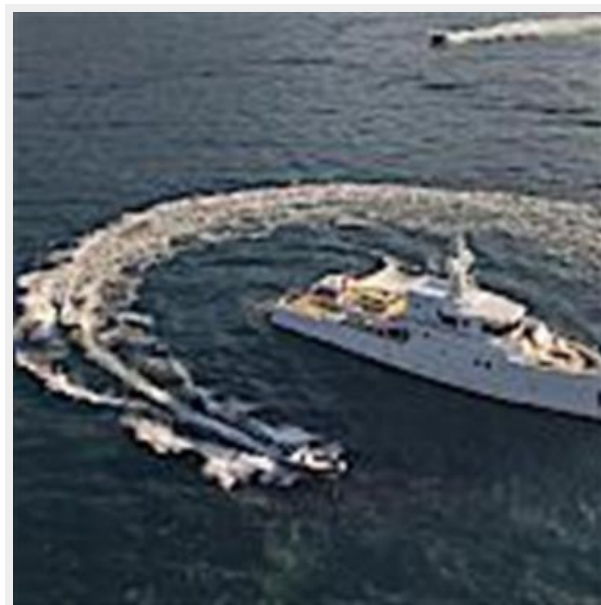
Exclusions

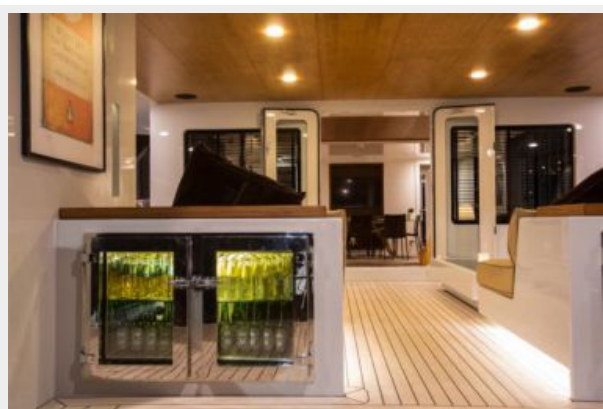
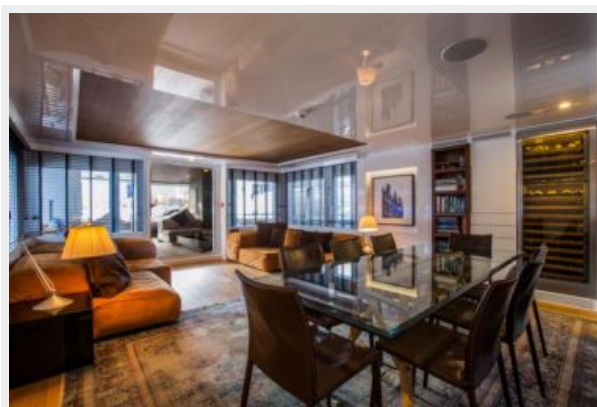
Owner's personal belongings.

Disclaimer

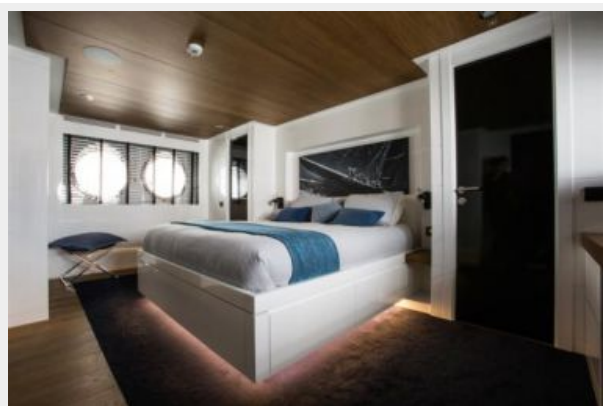
The Company offers the details of this vessel or yacht in good faith but cannot guarantee or warrant the accuracy of this information nor warrant the condition of the vessel. A buyer should instruct his representatives, agents, or his surveyors, to investigate such details as the buyer desires validated. This vessel or yacht is offered subject to prior sale, price change, or withdrawal without notice.

PHOTOS





Owner cabin



guest cabin



twin guest cabin



Guest cabin 2



Guest bathroom



owner bathroom detail



Galley 1



Galley 2



Crew dinette



Utility room



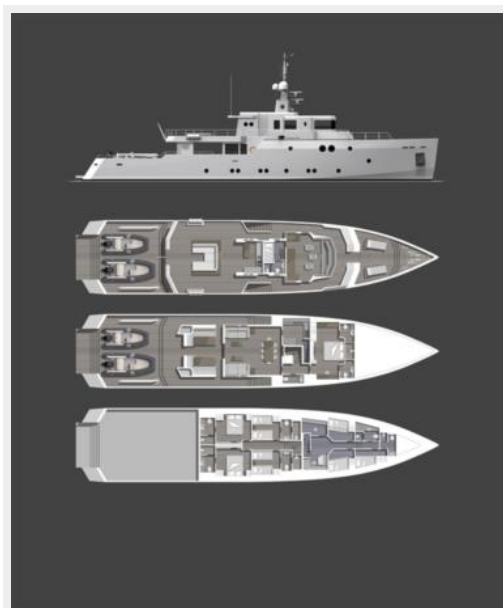
Bolier room



Engine Room



Plans



CONTACTS

Andrey Shestakov, leading yacht broker of the sales department of Shestakov Yacht Sales Inc. Shestakov Yacht Sales Inc., the official representative of the Miami/Fort Lauderdale FL headquarters.

Contact details

Email: **andrey@shestakovyachtsales.com**

Web: shestakovyachtsales.com/en/

Telephones

USA: **+1(954)274-4435**

Office hours

Monday – Saturday: **9:00 - 21:00 EDT**

Sunday: **closed**

Address



Harbour Towne Marina, 850 NE 3rd St,
STE 213, Dania, FL 33004