

## EOS — SELENE



**Builder:** SELENE

**Year Built:** 2007

**Model:** Trawler

**Price:** PRICE ON APPLICATION

**Location:** United States

**LOA:** 47' 0" (14.33m)

**Beam:** 15' 8" (4.78m)

**Min Draft:** 5' 8" (1.73m)

**Cruise Speed:** 8 Kts. (9 MPH)

**Max Speed:** 10 Kts. (12 MPH)

Our experienced yacht broker, Andrey Shestakov, will help you choose and buy a yacht that best suits your needs **EOS — SELENE** from our catalogue. Presently, at Shestakov Yacht Sales Inc., we have a wide variety of yachts available on our sale's list. We also work in close contact with all the big yacht manufacturers from all over the world.

If you would like to buy a yacht **EOS — SELENE** or would like help answering any questions concerning purchasing, selling or chartering a yacht, please call **+1(954)274-4435**

# TABLE OF CONTENTS

TABLE OF CONTENTS	2
SPECIFICATIONS	4
Overview	4
Basic Information	9
Dimensions	9
Speed, Capacities and Weight	10
Accommodations	10
Hull and Deck Information	10
Engine Information	10
PHOTOS	11
At dock	11
Cockpit	11
Cockpit door	11
Saloon	11
Stereo cabinet	11
Saloon2	11
Galley	12
Galley2	12
Stairs to cabins	12
Stairs to Saloon & Engine room	12
Alternator	12
Engine room	12
Engine room2	13
Engine room3	13
Guest Head	13
Guest	13
Guest Shower	14
Master	14

---

Master aftport	14
Master aft stbd	14
Master Head	15
Master Head2	15
Pilothouse	15
Pilothouse2	15
Pilothouse3	15
Bow	15
Forward	16
Bow2	16
Bow railing	16
Pilothouse aft	16
At Anchor side	16
Prop	16
Prop Rudder	17
CONTACTS	18
Contact details	18
Telephones	18
Office hours	18
Address	18

---

---

# SPECIFICATIONS

---

## Overview

---

NEW Special BOAT SHOW Price for the ANACORTES Boat Show!!! (April 8, 9, & 10; Cap Sante Marina in Anacortes, WA)

This 2007 Selene 47' is being offer for sale by the original owners. It has many upgrades and is ready to take you cruising this Spring & Summer. **EOS** has electric Bow & Stern thrusters, KEYPOWER hydraulic stabilizers, KABOLA Hydronic diesel heat, 2 cabins, 2 heads, "L" shaped settee on the flybridge, center galley configuration, flopper stoppers. So many more custom details. She will not last long! This is the best equipped Selene 47 on the market. Come to ANACORTES to see her. **Saloon:**

- Dark brown leather upholstery on settee
- Two EKORNES Stressless recliner chairs each with separate ottomans
- Expandable table
- Teak venetian blinds with custom window curtains
- 32" LED/LCD TV with custom roll down door built into galley counter
- Surround sound entertainment system with Blu-Ray player and satellite radio
- Custom wide stereo cabinet w/glass door
- Custom fitting carpets over teak & holly floors
- Tinted windows; (4) opening
- Dutch door to Cockpit

### Galley & Commissary:

Center line galley.

- Three burner FORCE-10 stove / oven with (2) REGASCO composite propane cylinders
- GE convection / microwave oven
- SEA FREEZE JT-26 refrigerator / top freezer with teak doors
- FRIGOBOAT freezer in Commissary (no cold plates and uses mini keel cooler)
- Double stainless steel sink with GROHE fixtures
- Granite counter tops and backsplash
- Pull out shelves for added storage
- Overhead cabinets
- BRAUN trash compactor
- Large open one level counter top / work area
- Custom Spice rack
- Custom cookbook storage
- (2) deep pull out pantry drawers in companionway to Pilothouse
- (12) bottle built-in wine rack in Commissary

LOTS of storage in Commissary

### **Pilothouse:**

- (4) steps up from the Saloon on the starboard side is the Pilothouse.
- Centered settee in dark brown leather
- Center table
- Overhead opening hatch with OCEAN-AIR shade / bug screen
- Custom dashboard cover
- RITCHIE compass
- Separate entertainment system with satellite radio, CD, and multiple speakers
- Extendable Pilot berth behind settee
- (2) Dutch doors to full walk around decks
- (2) opening windows
- Carpets over teak & holly floors
- (5) Stairs to Flybridge

### **Electronics and Navigation:**

- (2) RAYMARINE radars 4kW open array & 2kW dome
- RAYMARINE C-120 display dedicated to the open array scanner
- RAYMARINE E-120 multifunction display/chart plotter
- RAYMARINE ST 8002 autopilot with flux gate compass
- ICOM M604 VHF radio with remote microphone control on flybridge and MSR
- ICOM M802 SSB/Ham radio with remote head in office
- RAYMARINE ST-40 displays for speed and depth
- RAYMARINE DSM-300 fish finder/extended range depth sounder
- RAYMARINE GPS-125 receiver, networked
- SEA-CAS AIS receiver
- ECHO PILOT Platinum forward scan sonar with dedicated display
- MARETRON NMEA 2000 network with:
  - DSM-250 color display in pilot house
  - (2) DSM monochrome displays: flybridge and master stateroom
- GPS-200 receiver
- WSO-100 wind and weather unit at masthead
- DST-100 depth/speed/water temperature
- J-1939 interface with CUMMINS data
- USB-100 interface for laptop computer
- Climate and Water Systems

### **Flybridge & Boat Deck:**

(5) steps up from the Pilothouse is the Flybridge and Boat Deck.

- RAYMARINE E-80 multifunction display/chart plotter
- MARETRON monochrome display with: DSM-200
- ICOM HM-162-S VHF remote microphone with Hailer
- Bow & Stern Thruster controls
- Windless controls
- AUTO ANCHOR AA550RD digital display, (chain counter)
- L-shaped settee and table with storage
- Upgraded FORESPAR Mast & Boom
- MAGMA Rocker Stoppers for comfort at anchor
- NORTH SAILS riding sail
- Boom with electric winches to lower & raise the Dinghy to either side
- Folding mast
- Kayak brackets
- Shade umbrella
- Stainless steel railing with SUNBRELLA enclosure
- Bimini with Lexan and top quality vinyl window enclosures
- AB Lamina AL-10 RIB (10.5') Dinghy with removable beach wheels
- 20hp HONDA electric start & power tilt
- WINSLOW ORC 6-man double floor & canopy Life raft in valise case
- The Bridge Clearance with the Mast up is 32 feet 6 inches and Mast down is 14 feet.

### **Master Cabin & Head:**

(5) steps down from the Saloon on the port side is the companionway to the Engine room, Cabins & Heads.

- Island queen bed with custom 10" mattress
- Lots of cabinet storage
- RAYMARINE DMS-200 monochrome display
- ICOM 602 VHF remote mic
- 20" LG TV with DVD / CD / FM
- stereo speakers
- (2) HELLA fans
- "Closet Loops" in hanging lockers from KABOLA heater
- OCEAN-AIR shade & bug screen on hatch
- (2) opening port lights
- TECMA fresh water head with macerator
- bathtub / shower combo
- granite flooring & CORIAN countertop
- Custom overhead shelving
- (1) opening port light

### **Guest Cabin & Head:**

- Custom designed double bunks

- Custom designed office desk & storage
- ICOM M802 SSB/ham radio remote head
- CANDLEPOINT 4G LTE modem WIFI router
- (2) opening port lights
- "Closet Loops" in hanging locker from KABOLA heater
- Storage
- TECMA fresh water head with macerator
- Shower
- granite flooring & CORIAN countertop
- Custom overhead shelving
- Custom cabinet over the head
- (1) opening port light

Combo washer / vented dryer in Companionway from the Galley

### Mechanical:

- CUMMINS QSL9 M-3 330hp (1977 hrs)
- NORTHERN LIGHTS generator (292 hrs)
- upgraded engine exhaust (8")
- KEYPOWER Hydraulic Stabilizers (7.5 sq.ft.)
- Electric Bow & Stern thrusters
- REVERSO oil change system
- Fuel Transfer System
- KABOLA B-tap hydronic diesel heat system with tubing in lockers
- CRUISE- AIR reverse cycle heat / air conditioning (2 compressors)
- VILLAGE MARINE TECH 800 GPD reverse osmosis water maker
- 20 gal hot water heater
- Line Cutter

**Electrical:** This vessel was designed to be able to sit at anchor for 2 or 3 days without the need to run the generator. With only 292 hours on the generator, the goal was achieved. The AC capacity of the inverter give the flexibility to run the watermaker or the washer/ dryer.

- NORTHERN LIGHTS 12Kw generator (292 hours) w/ AIR-SEP exhaust
- MASTERVOLT battery chargers with RC-6 digital control panel
- MAGNUM 4024 inverter / charger (24vDC)
- BALMAR 98 series alternator on the engine (rated 220amp)
- with a BALMAR 624 programmable regulator
- (8) LIFELINE 16-LT (800 Amp hr) AGM batteries (**NEW 2012**) with LINK 10 system
- 4D AGM batteries for the thrusters (4, **NEW 2015** Stern), main engine (2, **NEW 2015**) & generator starters (2)
- CUMMINS alternator as a backup charging system
- LED lights for many of the fixtures

## Hull & Decks:

The aft cockpit area has room for (4) chairs and a small table. Opening half of the round teak table, which is secured to the transom, provides an area for a quiet dinner. The aft cockpit cabinet has (4) drawers, a locker, and a CORIAN countertop.

- Dual MUIR 3500 vertical capstan/gypsy windlass
- AUTO ANCHOR with digital chain counter (P/H & F/B)
- ROCNA 110 pound primary bow anchor with 400' G-4 3/8" chain
- DELTA 55 pound secondary bow anchor with 200' G-4 3/8" chain and 250' 3/4" line
- FORTRESS FX-37 stern anchor with 50' G-4 5/16" chain and 350' 3/4" 12 plait nylon line
- Hand held windlass controller at bow
- SOLAIRE infrared BBQ & propane tank
- Stereo speakers
- Cockpit storage cabinet w/ (4) drawers
- Sun shade window covers
- SUNBRELLA cap rail covers
- The Bridge Clearance with the Mast up is 32 feet 6 inches and Mast down is 14 feet.

## Safety Equipment:

- WINSLOW ORC 6-person double floor & canopy Life raft in valise case
- MOM-8 module (man overboard)
- ACR EPIRB with GPS (**NEW** battery in 2015)
- LIFESLING
- PARA-TECH 18' diameter para-anchor with 300' of 1" rode
- Ditch Bag with survival supplies, water, & packaged food
- CO2 & smoke alarms, CG approved Life Jackets, & required signaling equipment
- Fire Extinguishers
- Line Cutter forward of prop

## ADDITIONAL Information:

Actual fuel burn:

1050 RPM, 8.5 knots; flat water, fully charged batteries and stabilizers off = 3.9-4.0 GPH  
 1100 RPM, rough out, alternator working hard, stabilizers working = about 4.2 GPH

**NEW (Sept. 2015)** Zincs throughout, engine & underwater!

Ceiling heights:

- Saloon & Galley: 6 feet 7 inches
- Pilothouse: 6 feet 6 inches
- Master: 6 feet 7 inches



- Guest Shower: 6 feet 3 inches
- Master Head: 6 feet 1 inch

#### Bunk Lengths:

- Guest cabin: 6 feet 8 inches
- Master: 6 feet 8 inches

#### Exclusions:

Only the items listed on this spec sheet are included in the sale of this vessel. The following items are specifically excluded from the sale of this vessel:

All Clothing, personal belongings & tools, Art work, Kayaks, dishes & other Galley ware, Desktop computer from office, Brass clock from Saloon, Safety harnesses, jack lines, and selected sailing gear, HOME PHONECONNECT system from VERIZON.

**Disclaimer** The Company offers the details of this vessel in good faith but cannot guarantee or warrant the accuracy of this information nor warrant the condition of the vessel. A buyer should instruct his agents, or his surveyors, to investigate such details as the buyer desires validated. This vessel is offered subject to prior sale, price change, or withdrawal without notice.

## Basic Information

---

**Category:** Trawler

**Sub Category:** Raised Pilothouse

**Model Year:** 2007

**Year Built:** 2007

**Country:** United States

**Fly Bridge:** Yes

**Cockpit:** Yes

## Dimensions

---

**LOA:** 47' 0" (14.33m)

**LWL:** 45' 5" (13.84m)

**Beam:** 15' 8" (4.78m)

**Min Draft:** 5' 8" (1.73m)

**Clearance:** 14' 0" (4.27m)

**MFG Length:** 51' 6" (15.70m)

---

## Speed, Capacities and Weight

---

**Cruise Speed:** 8 Kts. (9 MPH)

**Cruise Speed RPM:** 1050 Kts.

**Max Speed:** 10 Kts. (12 MPH)

**Water Capacity:** 210 Gallons

**Holding Tank:** 60 Gallons

**Fuel Capacity:** 1000 Gallons

**Fuel Consumption:** 4 Gallons

---

## Accommodations

---

**Total Cabins:** 2

**Total Berths:** 4

**Sleeps:** 5

**Total Heads:** 2

---

## Hull and Deck Information

---

**Hull Material:** Fiberglass

**Hull Configuration:** Semi-Displacement

**Hull Color:** Cream

---

## Engine Information

---

**Engines:** 1

**Manufacturer:** Cummins

**Model:** QSL9 M-3

**Engine Type:** Inboard

**Fuel Type:** Diesel

# PHOTOS

**At dock**



**Cockpit**



**Cockpit door**



**Saloon**



**Stereo cabinet**



**Saloon2**



**Galley**



**Galley2**



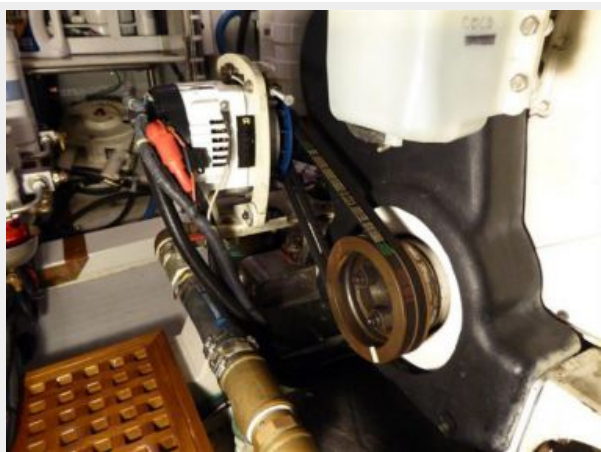
**Stairs to cabins**



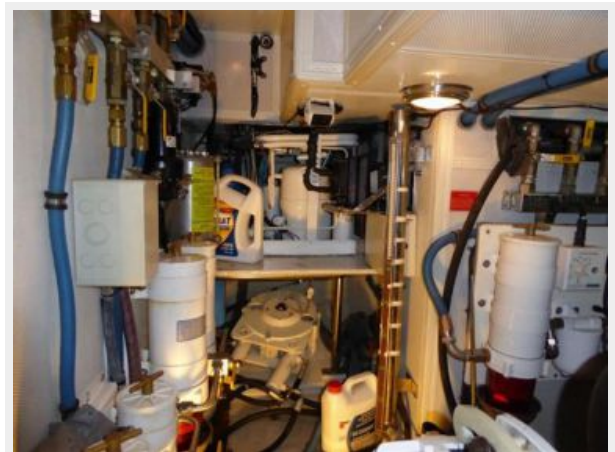
**Stairs to Saloon & Engine room**



**Alternator**



**Engine room**



**Engine room2**



**Engine room3**



**Guest Head**



**Guest**



**Guest Shower**



**Master**



**Master aftport**



**Master aft stbd**



**Master Head**



**Master Head2**



**Pilothouse**



**Pilothouse2**



**Pilothouse3**



**Bow**



**Forward**



**Bow2**



**Bow railing**



**Pilothouse aft**



**At Anchor side**



**Prop**





## Prop Rudder



# CONTACTS

---

Andrey Shestakov, leading yacht broker of the sales department of Shestakov Yacht Sales Inc. Shestakov Yacht Sales Inc., the official representative of the Miami/Fort Lauderdale FL headquarters.

## Contact details

---

Email: [andrey@shestakovyachtsales.com](mailto:andrey@shestakovyachtsales.com)

Web: [shestakovyachtsales.com/en/](http://shestakovyachtsales.com/en/)

## Telephones

---

USA: +1(954)274-4435

## Office hours

---

Monday – Saturday: **9:00 - 21:00** EDT

Sunday: **closed**

## Address

---



Harbour Towne Marina, 850 NE 3rd St,  
STE 213, Dania, FL 33004