

## SOMEWHERE IN TIME — SEA RAY



**Судостроитель:** SEA RAY

**Год постройки:** 2007

**Модель:** Крейсер

**Цена:** **ЦЕНА ЯХТЫ ПО ЗАПРОСУ**

**Местонахождение:** United States

**Длина общая:** 60' 0" (18.29m)

**Ширина:** 16' 9" (5.11m)

**Макс. осадка:** 4' 9" (1.45m)

Купить **Somewhere In Time — SEA RAY** а также выбрать подходящую вам яхту из нашего каталога яхт вам поможет опытный яхтенный брокер Андрей Шестаков. На сегодняшний день компания **Shestakov Yacht Sales Inc.** имеет большое количество яхт в собственном списке продаж, а также тесно сотрудничает со всеми крупными яхтенными производителями по всему миру.

Для того чтобы купить яхту **Somewhere In Time — SEA RAY** а также проконсультироваться по любому вопросу связанному с покупкой, продажей, чартером яхт позвоните по телефону **+7(918)465-66-44**.

# ОГЛАВЛЕНИЕ

---

ОГЛАВЛЕНИЕ	2
ХАРАКТЕРИСТИКИ	4
Обзор	4
Основная информация	4
Размеры	5
Скорость, вместимость и масса	5
Размещение	5
Корпус и палуба	5
Информация о двигателе	5
ПОДРОБНОЕ ОПИСАНИЕ	6
Manufacturer Provided Description	6
Helm	6
Vessel Walkthrough	6
Salon	7
Galley	7
Master Stateroom	7
VIP Stateroom	7
Guest Stateroom	8
Cockpit	8
Deck	8
Electronics	8
Electrical	9
Disclaimer	9
Исключения	9
Отказ от ответственности	10
ФОТОГРАФИИ	11
КОНТАКТЫ	17
Контактная информация	17

---

Телефоны	17
Время работы	17
Адрес	17

---

---

# ХАРАКТЕРИСТИКИ

---

## Обзор

---

This 60 Sea Ray Sundancer is immaculate and completely turn key. Her gel-coat shows as new and she is maintained with an open check book.

- Raymarine night vision camera 2014
- Yacht Controller- remote control docking system 2014
- Bow and stern thrusters
- Raymarine E140 w touch screen plotter 2012
- Dingy w/ hydraulic platform
- Satellite TV (upgraded HD7 dome 2014)
- Raymarine E120 plotter
- Raymarine 4' open array radar
- Autopilot
- Sea Ray navigator
- New PSS shaft seals 2015
- Heat exchangers serviced July 2014

The 60 Sundancer features an enclosed helm/sunroom area with two retractable sunroofs. Open the stainless framed sliding glass door, and the cockpit and helm become one. She runs quiet and smooth thanks to the enclosed helm and her MAN V-10 common rail power (1030 hrs). Equipped with every option you will need, including teak cockpit, teak cockpit table and chairs, cockpit grill, satellite TV, and upgraded electronics. She also features a 2008 Novurania dingy with a 30hp Honda four-stroke.

Below she features a plush full beam master stateroom, with six large portlights. The forward VIP stateroom is comparable to most masters, and features private access to the day head. The third stateroom features over and under bunks.

If you are considering any express in the 60' range, take a look at this one, you will not be disappointed.

---

## Основная информация

---

**Тип судна:** Крейсер

**Модельный год:** 2007

**Год постройки:** 2007

**Страна:** United States

## Размеры

---

**Длина общая:** 60' 0" (18.29m)

**Ширина:** 16' 9" (5.11m)

**Макс. осадка:** 4' 9" (1.45m)

## Скорость, вместимость и масса

---

**Водоизмещение:** 60200 Pounds

**Вместимость воды:** 200 Gallons

**Объем топливного бака:** 900 Gallons

## Размещение

---

**Всего кают:** 3

## Корпус и палуба

---

**Материал корпуса:** Fiberglass

## Информация о двигателе

---

**Двигатели:** 2

**Производитель:** MAN

**Модель:** v-10

**Тип двигателя:** Inboard

**Тип топлива:** Diesel

---

# ПОДРОБНОЕ ОПИСАНИЕ

---

## Manufacturer Provided Description

---

On the 60 Sundancer the wow-features are endless, beginning with an upper-deck sunroom with two retractable sun roofs, teak flooring and a 360-degree panoramic view. Sea Ray has included an elegant salon with state-of-the-art entertainment center, three luxurious staterooms and a wealth of gracious amenities throughout.

## Helm

---

- Ultra-leather upholstery
- Fiberglass hardtop w/retractable roof
- Adjustable Stidd leather chair at the helm
- Adjustable Stidd double helm seat inboard of helm chair
- Hydraulic power assisted steering w/ a wood accented tilt wheel
- MAN digital engine displays
- Remote spotlight
- Bow & stern thruster
- Teak flooring throughout
- SubZero refrigerator
- Matterhorn countertop
- Wet bar
- Wine chiller
- 27" flat screen pop-up LCD HDTV w/remote DVD player
- Bose Lifestyle 48 system w/Acousticmass speakers
- Custom matching upper salon/cockpit table
- Factory hardtop w/electric skylights
- Curved glass & SS cockpit doors

## Vessel Walkthrough

---

- Three stateroom layout
- Full beam master stateroom is aft, VIP stateroom is forward and Guest stateroom is located to starboard forward
- 2 heads w/separate stall showers
- Innerspring pillow-top mattresses
- Dark cherry interior throughout
- State-of-the-art entertainment center

---

## Salon

---

- Central vac system
- Deluxe entertainment center w/32" flat screen TV
- Dark cherry wood throughout
- Washer/dryer
- Wood blinds
- Sconce lighting

---

## Galley

---

- Wrap-around bar/counter top
- Stainless steel convection microwave
- Stainless steel SubZero freezer & icemaker
- Stainless steel sink
- Water filtration system
- Ample storage throughout
- Rope lighting galley floor
- Solid surface countertops
- Wood galley floor

---

## Master Stateroom

---

- Full beam
- Queen-size bed
- Deluxe entertainment system
- Ample storage
- Inner spring pillow-top mattress
- Cedar-lined closets
- Master head
- Vacuflush Sealand head system
- Separate stall shower
- Wood blinds

---

## VIP Stateroom

---

- Inner spring pillow-top mattress
- Deluxe entertainment system
- Ample storage
- Cedar-lined closets
- V-berth add 2 drawers port hanging

- Closet & shelving
- Wood blinds

---

## Guest Stateroom

---

- Bunk beds
- Cedar-lined closets
- Wood blinds
- Additional robe hooks to back of head doors

---

## Cockpit

---

- BBQ grill
- Gloss teak cockpit table with cushioned teak chairs
- Teak flooring
- Wet bar sink/refrigerator
- Sink port side
- Refrigerator to starboard side
- Ice-maker to port side
- Matterhorn counter top

---

## Deck

---

- Refrigerator
- Wetbar
- Remote control windlass w/SS anchor
- Teak decking in cockpit
- Bow & stern thrusters
- Foredeck sunpad
- Remote control spotlight
- Hydraulic swim platform
- Black Sunbrella exterior covers

---

## Electronics

---

- Yacht Controller remote docking system 2013
- Raymarine night vision camera 2013
- VHF radio
- Raymarine E120 GPS/plotter/radar w/integrated 4kw open array
- Raymarine E140 Wide color plotter (New 2012)



- Sea Ray Navigator
- Raymarine autopilot
- KVH TracVision 4 SAT TV
- Northstar VHF
- Bow and Stern Thrusters
- Bose system w/Acousticmass speakers

---

## Electrical

---

- ONAN 21kw generator in sound box
- Dual 110V & 240V shore power Cablemasters
- Automatic 12V & 24V battery chargers
- 240V shore power/generator system
- Shore power is boost transformer
- Automatic Halon fire suppression system
- AC/heating w/generator
- Macerator w/seacock interlock system

---

## Disclaimer

---

The Company offers the details of this vessel in good faith but cannot guarantee or warrant the accuracy of this information nor warrant the condition of the vessel. A buyer should instruct his agents, or his surveyors, to investigate such details as the buyer desires validated. This vessel is offered subject to prior sale, price change, or withdrawal without notice. While we attempt to display current and accurate data, this listing may not reflect the most recent transactions or may contain occasional data entry errors. Selling agent makes no warranties, express or implied, regarding the content or availability of the products described herein. All inventory listed is subject to availability and prior sale. Please consult selling agent for details. Prices are quoted for the USA only and may not include transportation, taxes, or other applicable charges. Photographs may be representative only and may vary somewhat from the actual items offered for sale. We will not be responsible for inaccurate data obtained from our site. Please check with your local dealer to ensure that you have the latest information available. Information on this web site could include technical inaccuracies or typographical errors. Changes may be periodically made to the information or the products herein. Questions or comments regarding these policies may be directed to website hosting agent.

---

## Исключения

---

При продаже яхты исключаются личные вещи владельца.

---

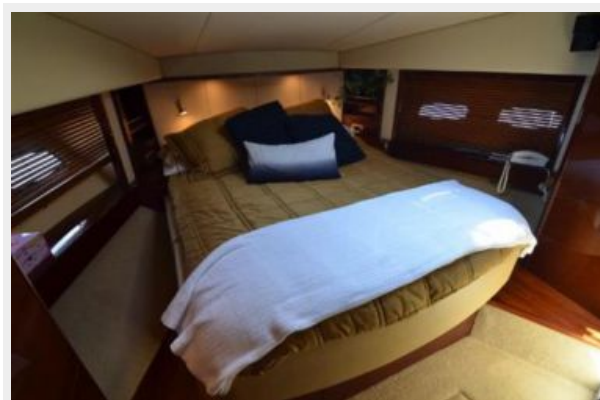
## Отказ от ответственности

---

Компания предоставляет описание судна или яхты добросовестно, но не может гарантировать точность этой информации, а также не ручается за техническое состояние. Покупатель должен проинструктировать своих агентов или оценщиков исследовать представленную информацию более подробно, по собственному желанию. Продажа судна или яхты, изменение цены или снятие с продажи будет происходить без предварительного уведомления.

# ФОТОГРАФИИ

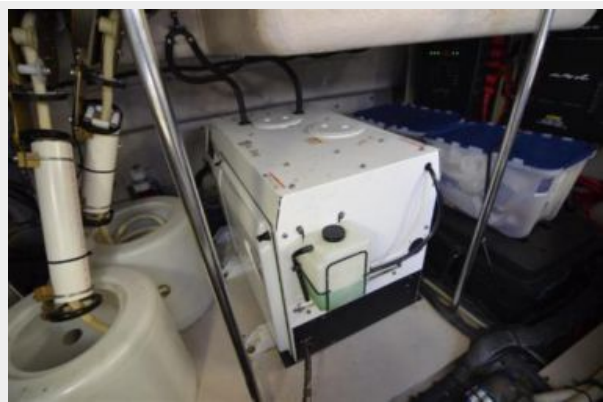














# КОНТАКТЫ

---

Андрей Шестаков (Andrey Shestakov) – ведущий яхтенный брокер отдела продаж яхт и судов компании Shestakov Yacht Sales Inc. Официальный представитель Shestakov Yacht Sales Inc. для русскоговорящих клиентов в центральном офисе компании в Майами/Форт Лодердейл/Флорида/США.

## Контактная информация

---

Email: [andrey@shestakovyachtsales.com](mailto:andrey@shestakovyachtsales.com)

Web: [shestakovyachtsales.com](http://shestakovyachtsales.com)

## Телефоны

---

Краснодарский край: **+7(918)465-66-44**

США, Майами, Флорида: **+1(954)274-4435**

## Время работы

---

Понедельник – Суббота: **9:00 - 21:00**  
EDT

Воскресенье: **Закрито**

## Адрес

---



Harbour Towne Marina, 850 NE 3rd St,  
STE 213, Dania, FL 33004