

VERITAS — TIDAL CREEKS BOATWORKS



Builder: [Tidal Creeks Boatworks](#)

Year Built: 2008

Model: Sport Fisherman

Price: PRICE ON APPLICATION

Location: United States

LOA: 35' 0" (10.67m)

Beam: 11' 0" (3.35m)

Max Draft: 3' 0" (0.91m)

Cruise Speed: 30 Kts. (35 MPH)

Max Speed: 35 Kts. (40 MPH)

Our experienced yacht broker, Andrey Shestakov, will help you choose and buy a yacht that best suits your needs Veritas — Tidal Creeks Boatworks from our catalogue. Presently, at Shestakov Yacht Sales Inc., we have a wide variety of yachts available on our sale's list. We also work in close contact with all the big yacht manufacturers from all over the world.

If you would like to buy a yacht Veritas — Tidal Creeks Boatworks or would like help answering any questions concerning purchasing, selling or chartering a yacht, please call +1(954)274-4435

TABLE OF CONTENTS

TABLE OF CONTENTS	2
SPECIFICATIONS	4
Basic Information	4
Dimensions	4
Speed, Capacities and Weight	4
Accommodations	4
Hull and Deck Information	4
Engine Information	5
DETAILED INFORMATION	6
2008 35 Tidal Creeks Boatworks	6
Exclusions	9
Disclaimer	9
PHOTOS	10
Anchor Locker	10
Bow	10
Cockpit Storage	10
Cockpit	10
Livewell	11
Cockpit Controls	11
Tackle Center	11
Tackle Center	11
Drink Box	11
Cockpit	11
Transom Door	12
Helm Deck	12
Helm Deck	12
Helm Deck	12
Transom	12

Helm	12
Engine Room	13
Engine Room	13
Engine Room	13
Engine Room	13
Engine Room	13
Engine Room	13
Engine Room	14
Engine Room	14
Engine Room	14
Engine Room	14
Forward Berth	14
Forward Berth	14
Head	15
Galley	15
Head	15
Radio	15
Cabin	16
Hard Top	16
Swim Platform	16
CONTACTS	17
Contact details	17
Telephones	17
Office hours	17
Address	17

SPECIFICATIONS

Basic Information

Category: Sport Fisherman

Sub Category: Express

Model Year: 2008

Year Built: 2008

Country: United States

Cockpit: Yes

Dimensions

LOA: 35' 0" (10.67m)

Beam: 11' 0" (3.35m)

Max Draft: 3' 0" (0.91m)

Speed, Capacities and Weight

Cruise Speed: 30 Kts. (35 MPH)

Max Speed: 35 Kts. (40 MPH)

Water Capacity: 40 Gallons

Fuel Capacity: 300 Gallons

Accommodations

Total Cabins: 1

Hull and Deck Information

Hull Material: Fiberglass

Engine Information

Engines: 2

Manufacturer: Yanmar

Model: 6LYA2-STP

Engine Type: Inboard

Fuel Type: Diesel

DETAILED INFORMATION

2008 35 Tidal Creeks Boatworks

This boat was custom built by Tidal Creeks Boatworks on Nantucket. It is a very high quality boat and has top of the line finish work. The hull is 2002 35 Blackwell that Tidal Creeks bought. The hull was shipped to Nantucket and built and finished there. She runs very well with 28-30 kt. Cruise. She is a must see Express.

ELECTRONICS

15" Northstar 6100i GPS

10" Northstar 6100i GPS

Northstar 64 mi. Radar

Northstar 491 Echo Sounder

1KW Transducer

Northstar 3300 Auto Pilot

Northstar NS 100SS VHF

ACR Remote Spot Light

Clarion CMD4A AM/FM/CD Satellite Stereo System with 4 Poly-Planar Speakers

2 Halogen Underwater Lights

Fuel Floscan System with Digital Tachometers

5" Ritchie Compass with Blue Card and Powerdamp

MECHANICAL

Twin Yanmar 6LYA2- STP 440 Horsepower

Main Engines with ZF 280A-1 Marine Transmissions with 1.75 to 1 gear ratio

Manual Trolling Valves

K3-6.5 Phasor 6.5KW Generator

Fireboy Automatic Fire Suppression System

4 Diaphragm Style Automatic Bilge Pumps

Kobelt 2 Station Electronic Control System with Synchronizer and Manual Back Up System

Marine Air 16,000 BTU Two Zone Air-Conditioning System

5 Valve Reverso Oil Changing System

Strong Dripless Main Shaft and Rudder Packing Boxes

SeaStar Hydraulic Steering System

Racor Dual Element Fuel Filters

Remote mounted Main Engine Oil Filters

Isotemp 6 Gallon Hot Water Heater

Guest Two-Bank Automatic Battery Charger

2 High Water Alarms

Remote Hydraulic Engine Hatch Lifter

Lenco Trim Tabs

INTERIOR FEATURES

Custom Grain Matched Satin Finished Mahogany Interior

GALLEY

Microwave

2 Burner Electric Cook Top

12V/120V Refrigerator

S/S Sink

Three Food Storage Cabinets

CABIN

Generous Over/Under Bunks with Flip Down Couch and Leather Cushions

Throw Pillows

Large Cedar-lined

Closets to Port and Starboard

HEAD

Stand-Up Head/Shower Forward with High Gloss Awlgrip finish

Teak and Holly Sole.

WHEELHOUSE FEATURES

High-Gloss Bright Finished Mahogany Center Helm Pod with S/S Steering Wheel

Control Levers and Gauge Bezel

Un-cluttered Electronics Layout that includes 2 Air­ Conditioning Ducts and Compass

Scopinich Helmsmans Chair with Deluxe Cushions and Footrest

Unique Passenger seating that includes Scopinich Chair Backrests with custom mounting brackets that allow forward facing or aft facing seating position

Starboard Bench includes Storage Forward and a 32 Quart Refrigerated Compartment Aft

Port seat includes a large storage area beneath an "L" shaped bench

Stereo Speakers to Port and Starboard

Teak Decking throughout

COCKPIT FEATURES

Starboard Locker features a 2nd Station Control Head with Storage below

Port features a Bait Prep Station with Hot and Cold Freshwater and a 3-Drawer Teak Tackle Station below

Removable Swim Platform

Cockpit to Wheelhouse step has storage below

Both Freshwater and Saltwater spigots to Port and Starboard respectively

4 *S/S* Rod Holders in Teak Covering Boards surrounding cockpit

Large, Walk-Through Gate Door

30 Gallon Circulating Livewell

Large In-Deck Removable Fish Box with Overboard Discharge

Custom High Gloss Finished Mahogany Rocket Launcher with 4 *S/S* Rod Holders and Storage Tray

Teak Decks throughout

OTHER FEATURES

Custom Fiberglass Hard Top with 3 Sided EZ2CY Enclosure

Rupp Outriggers

Custom Antenna Mast

Forward Anchor Location and Storage

Every surface of this boat has been Faired and Sprayed with High Gloss Awlgrip Finish allowing for easy clean-up and maintenance

Exclusions

Owner's personal belongings.

Disclaimer

The Company offers the details of this vessel or yacht in good faith but cannot guarantee or warrant the accuracy of this information nor warrant the condition of the vessel. A buyer should instruct his representatives, agents, or his surveyors, to investigate such details as the buyer desires validated. This vessel or yacht is offered subject to prior sale, price change, or withdrawal without notice.

PHOTOS

Anchor Locker



Bow



Cockpit Storage



Cockpit



Livewell



Cockpit Controls



Tackle Center



Tackle Center



Drink Box



Cockpit



Transom Door



Helm Deck



Helm Deck



Helm Deck



Helm



Transom



Engine Room



Engine Room



Engine Room



Engine Room



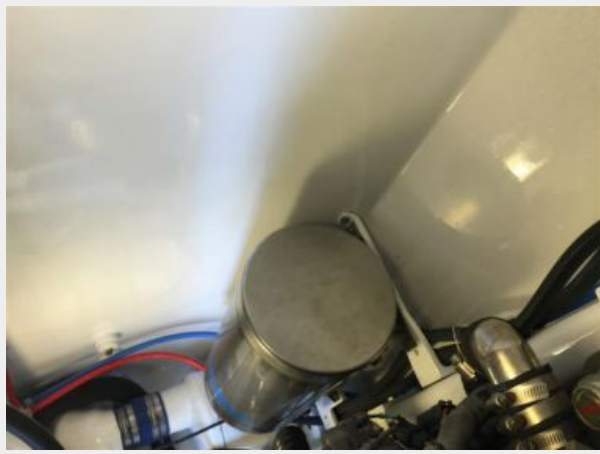
Engine Room



Engine Room



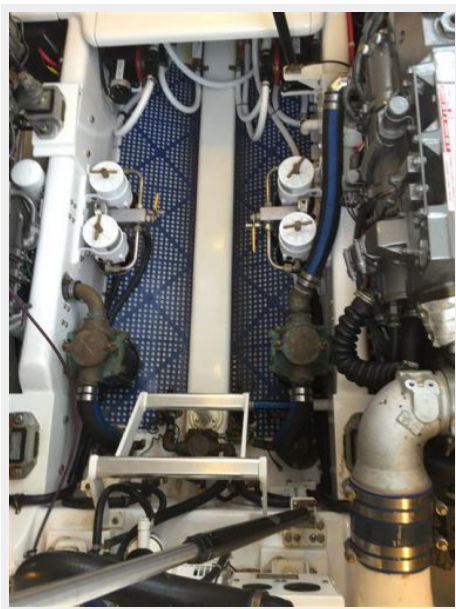
Engine Room



Engine Room



Engine Room



Engine Room



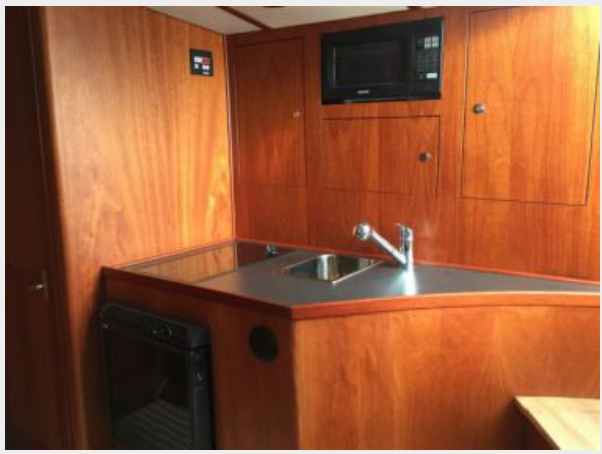
Forward Berth



Forward Berth



Galley



Head



Head



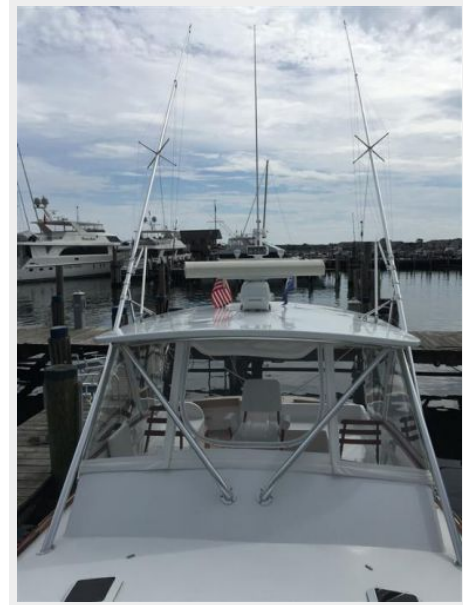
Radio



Cabin



Hard Top



Swim Platform



CONTACTS

Andrey Shestakov, leading yacht broker of the sales department of Shestakov Yacht Sales Inc. Shestakov Yacht Sales Inc., the official representative of the Miami/Fort Lauderdale FL headquarters.

Contact details

Email: andrey@shestakovyachtsales.com

Web: shestakovyachtsales.com/en/

Telephones

USA: +1(954)274-4435

Office hours

Monday – Saturday: **9:00 - 21:00** EDT

Sunday: **closed**

Address



Harbour Towne Marina, 850 NE 3rd St,
STE 213, Dania, FL 33004