

CRISTINA — HATTERAS



Builder: HATTERAS

Year Built: 1971

Model: Motor Yacht

Price: PRICE ON APPLICATION

Location: United States

LOA: 53' 0" (16.15m)

Beam: 15' 10" (4.83m)

Max Draft: 4' 0" (1.22m)

Our experienced yacht broker, Andrey Shestakov, will help you choose and buy a yacht that best suits your needs **Cristina — HATTERAS** from our catalogue. Presently, at Shestakov Yacht Sales Inc., we have a wide variety of yachts available on our sale's list. We also work in close contact with all the big yacht manufacturers from all over the world.

If you would like to buy a yacht **Cristina — HATTERAS** or would like help answering any questions concerning purchasing, selling or chartering a yacht, please call **+1(954)274-4435**

TABLE OF CONTENTS

TABLE OF CONTENTS	2
SPECIFICATIONS	3
Overview	3
Basic Information	4
Dimensions	5
Speed, Capacities and Weight	5
Accommodations	5
Hull and Deck Information	5
Engine Information	5
PHOTOS	6
CONTACTS	19
Contact details	19
Telephones	19
Office hours	19
Address	19

SPECIFICATIONS

Overview

ESTATE SALE, REASONABLE OFFERS ENCOURAGED!!

“Cristina” is a fine example of the Classic Hatteras 53 Motor Yacht, a timeless design and an extremely popular cruising yacht whose comfortable ride and generous accommodations were seldom equaled. Two decades in production, she quickly became the standard by which other motor yachts in her size-range were measured! She offers a great 3 stateroom / 3 head layout with a full galley and breakfast nook down and a large salon with walkout to the spacious aft deck where entertaining is made easy. Pilot house entry doors are located on either side along with aft deck wing doors to provide safe walk-around access. Her running gear is in good working order and her efficient 6-92 TI twin Detroit's run very well.

She will make an excellent live-aboard!

Boat Name "Cristina" **Specs** Builder: Hatteras Yachts Designer: J. Hargrave Flag of Registry: United States **Dimensions** LOA: 53 ft 0 in Beam: 15 ft 10 in LWL: 47 ft 3 in Maximum Draft: 4 ft 0 in Displacement: 55000 lbs Bridge Clearance: 17 ft 0 in **Engines** Engine 1: Engine Brand: Detroit J&T Year Built: 1990 Engine Model: 6 92TI Engine Type: Inboard Engine/Fuel Type: Diesel Location: Starboard Drive Type: Direct Drive Engine Power: 550 HP Engine 2: Engine Brand: Detroit J&T Year Built: 1990 Engine Model: 6 92TI Engine Type: Inboard Engine/Fuel Type: Diesel Location: Port Drive Type: Direct Drive Engine Power: 550 HP **Tanks** Fresh Water Tanks: Fiberglass (300 Gallons) Fuel Tanks: Fiberglass (600 Gallons) Holding Tanks: Plastic (50 Gallons) **Accommodations** Number of single berths: 2 Number of twin berths: 2 Number of double berths: 1 Number of heads: 3 **Outside Equipment/Extras** Electric windlass

Vessel Specifications

ACCOMODATIONS: “Cristina” has a two deck layout which is perfect for cruising, living aboard and entertaining. The upper deck has a large and airy salon (with the lower helm station), and double-doors leading to the large fully-enclosed aft deck which is a great place to enjoy the view. On the lower-deck (moving from bow aft) you have a spacious stateroom in the bow, with the head & vanity compartment to port, to starboard is a cabinet with the Maytag washer and dryer units. Next is the galley to port, with a breakfast nook to starboard, the steps down from the salon are just aft of this. Down from the galley is a corridor leading aft (with an engine room on either side) to port is another stateroom with twin berths, to starboard a guest head. Further aft is the master head compartment, with a large shower enclosure (which is shared with the guest head). The master suite is full-width and features a queen-size bed, dresser, night-stands, and an ample clothes closet. • **FORWARD GUEST CABIN:** • 32V & 110V fixtures • Over/Under Bunk beds • Forward Raritan Head with Vanity Sink • **VIP GUEST STATEROOM:** • Side-by-side twin berths • Large Clothes Closet • 32V & 110V lighting fixtures • Full Guest Head with Full Shower • Raritan 32V china toilet • **MASTER STATEROOM:** • Master Head with Shower: •

Queen-size platform bed • Night Stands • Wood Shutter-Style Cabinets • Cedar-lined closet
• **SALON:** • Lower Helm Station • Carpeting Throughout • Couch with End Tables and Lamps •
Two Wicker Swivel Tub Chairs with Lamp Table • **AFT DECK:** • Hard Top and Eisenglas
Enclosure • Abundant Comfortable Seating and Cocktail table • Varnished Wood Wing Doors •
Cabinet with Daewoo Refrigerator & Separate Ice-Maker

GALLEY: The U-shaped down galley is large, with good counter space and convenient to the
salon via a curved stairway. • KitchenMaid four burner electric cooktop • Mica counter-tops with
teak trim • Frigidaire refrigerator/freezer • Frigidaire microwave convection oven and LG
microwave over stove • Whirlpool trash compactor • Instant Hot Water System

ELECTRONICS & ELECTRICAL: • (2) Gensets-KiloPak 12KW and Phasor 12.5 KW • 2 banks
32 volt batteries, (5) 12 volt batteries • (1) Raritan, (1) Sea Ranger & (1) Guest Battery chargers •
(1) SMR 550 & (1) Standard Horizon VHF's • Raymarine RP650 Autopilot • (2) Garmin 4208
Chartplotters • (2) Hummingbird 153 Depth Sounders • VDO/Standard log/speed indicators, (2)
Danforth compass's • Furuno Radar (unoperable) • Kenwood stereo • 50 amp shore-power cord

MECHANICAL: Each engine is housed in its own engine-room on either side of the companion-
way leading to the aft staterooms. • Twin Detroit Diesel 6 92TI's • Fuel management system •
Marine Air/Cruisair A/C units • CO2 75# fire suppression system • Two spare props, & one shaft
• Morse controls • AC Delco air compressor • (5) electric & (2) manual bilge-pumps • Hydraulic
Steering system

DECK: The flybridge/upper helm is large with ample seating for entertaining. The side-decks
are wide for ease of access to the bow. There is bow seating for several people. The aft deck is
fully-enclosed. • Swim-platform • Vetus Elite electric windlass • Upper helm station • Varnished
railings • (3) anchors-FX 55 Fortress/60H Danforth/60# Plow

• Fresh exterior Awlgrip 2012 • Fresh annual bottom paint 2015 • Two deck boxes on forward
deck, Marquipt Boarding Stairs • 110 volt dingy davit • 2009 Walker Bay 11'2" Rigid bottom
inflatable w/ Tohatsu 15 HP four stroke outboard engine

Basic Information

Category: Motor Yacht

Model Year: 1971

Year Built: 1971

Country: United States

Dimensions

LOA: 53' 0" (16.15m)

Beam: 15' 10" (4.83m)

Max Draft: 4' 0" (1.22m)

Clearance: 17' 0" (5.18m)

Speed, Capacities and Weight

Displacement: 55000 Pounds

Water Capacity: 300 Gallons

Holding Tank: 50 Gallons

Fuel Capacity: 600 Gallons

Accommodations

Total Cabins: 3

Total Berths: 3

Sleeps: 5

Total Heads: 3

Hull and Deck Information

Hull Material: Fiberglass

Hull Finish: Fiberglass

Engine Information

Engines: 2

Manufacturer: Detroit Diesel / Johnson & Towers

Model: 6 92TI

Engine Type: Inboard

Fuel Type: Diesel

PHOTOS











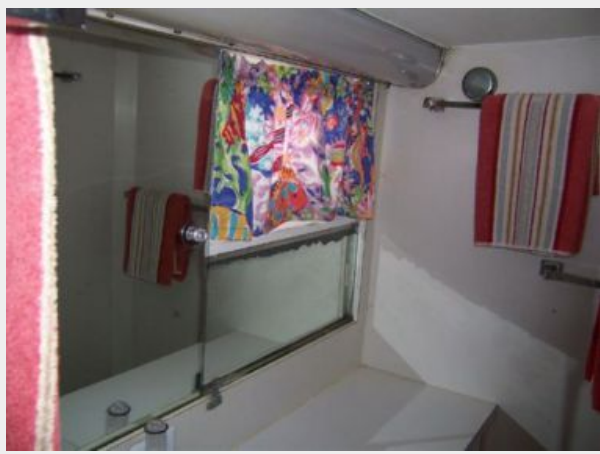


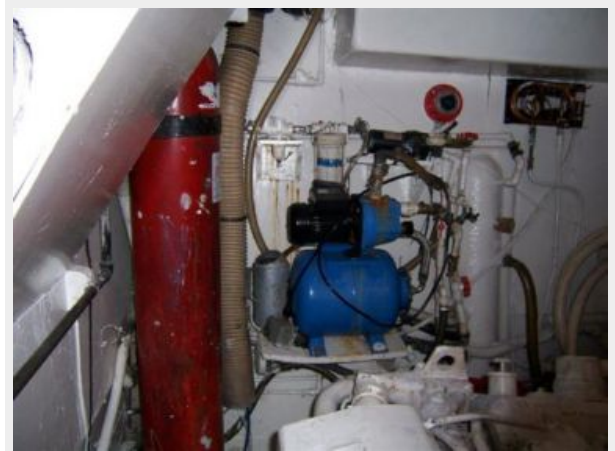














CONTACTS

Andrey Shestakov, leading yacht broker of the sales department of Shestakov Yacht Sales Inc. Shestakov Yacht Sales Inc., the official representative of the Miami/Fort Lauderdale FL headquarters.

Contact details

Email: andrey@shestakovyachtsales.com

Web: shestakovyachtsales.com/en/

Telephones

USA: +1(954)274-4435

Office hours

Monday – Saturday: **9:00 - 21:00** EDT

Sunday: **closed**

Address



Harbour Towne Marina, 850 NE 3rd St,
STE 213, Dania, FL 33004