

## CRISTINA — HATTERAS



**Судостроитель:** HATTERAS

**Год постройки:** 1971

**Модель:** Моторная яхта

**Цена:** **ЦЕНА ЯХТЫ ПО ЗАПРОСУ**

**Местонахождение:** United States

**Длина общая:** 53' 0" (16.15m)

**Ширина:** 15' 10" (4.83m)

**Макс. осадка:** 4' 0" (1.22m)

Купить **Cristina — HATTERAS** а также выбрать подходящую вам яхту из нашего каталога яхт вам поможет опытный яхтенный брокер Андрей Шестаков. На сегодняшний день компания **Shestakov Yacht Sales Inc.** имеет большое количество яхт в собственном списке продаж, а также тесно сотрудничает со всеми крупными яхтенными производителями по всему миру.

Для того чтобы купить яхту **Cristina — HATTERAS** а также проконсультироваться по любому вопросу связанному с покупкой, продажей, чартером яхт позвоните по телефону **+7(918)465-66-44**.

# ОГЛАВЛЕНИЕ

---

ОГЛАВЛЕНИЕ	2
ХАРАКТЕРИСТИКИ	3
Обзор	3
Основная информация	4
Размеры	5
Скорость, вместимость и масса	5
Размещение	5
Корпус и палуба	5
Информация о двигателе	5
ФОТОГРАФИИ	6
КОНТАКТЫ	19
Контактная информация	19
Телефоны	19
Время работы	19
Адрес	19

# ХАРАКТЕРИСТИКИ

## Обзор

### ESTATE SALE, REASONABLE OFFERS ENCOURAGED!!

“Cristina” is a fine example of the Classic Hatteras 53 Motor Yacht, a timeless design and an extremely popular cruising yacht whose comfortable ride and generous accommodations were seldom equaled. Two decades in production, she quickly became the standard by which other motor yachts in her size-range were measured! She offers a great 3 stateroom / 3 head layout with a full galley and breakfast nook down and a large salon with walkout to the spacious aft deck where entertaining is made easy. Pilot house entry doors are located on either side along with aft deck wing doors to provide safe walk-around access. Her running gear is in good working order and her efficient 6-92 TI twin Detroit's run very well.

**She will make an excellent live-aboard!**

**Boat Name** "Cristina" **Specs** Builder: Hatteras Yachts Designer: J. Hargrave Flag of Registry: United States **Dimensions** LOA: 53 ft 0 in Beam: 15 ft 10 in LWL: 47 ft 3 in Maximum Draft: 4 ft 0 in Displacement: 55000 lbs Bridge Clearance: 17 ft 0 in **Engines** Engine 1: Engine Brand: Detroit J&T Year Built: 1990 Engine Model: 6 92TI Engine Type: Inboard Engine/Fuel Type: Diesel Location: Starboard Drive Type: Direct Drive Engine Power: 550 HP Engine 2: Engine Brand: Detroit J&T Year Built: 1990 Engine Model: 6 92TI Engine Type: Inboard Engine/Fuel Type: Diesel Location: Port Drive Type: Direct Drive Engine Power: 550 HP **Tanks** Fresh Water Tanks: Fiberglass (300 Gallons) Fuel Tanks: Fiberglass (600 Gallons) Holding Tanks: Plastic (50 Gallons) **Accommodations** Number of single berths: 2 Number of twin berths: 2 Number of double berths: 1 Number of heads: 3 **Outside Equipment/Extras** Electric windlass

### Vessel Specifications

**ACCOMODATIONS:** “Cristina” has a two deck layout which is perfect for cruising, living aboard and entertaining. The upper deck has a large and airy salon (with the lower helm station), and double-doors leading to the large fully-enclosed aft deck which is a great place to enjoy the view. On the lower-deck (moving from bow aft) you have a spacious stateroom in the bow, with the head & vanity compartment to port, to starboard is a cabinet with the Maytag washer and dryer units. Next is the galley to port, with a breakfast nook to starboard, the steps down from the salon are just aft of this. Down from the galley is a corridor leading aft (with an engine room on either side) to port is another stateroom with twin berths, to starboard a guest head. Further aft is the master head compartment, with a large shower enclosure (which is shared with the guest head). The master suite is full-width and features a queen-size bed, dresser, night-stands, and an ample clothes closet. • **FORWARD GUEST CABIN:** • 32V & 110V fixtures • Over/Under Bunk beds • Forward Raritan Head with Vanity Sink • **VIP GUEST STATEROOM:** • Side-by-side twin berths • Large Clothes Closet • 32V & 110V lighting fixtures • Full Guest Head with Full Shower • Raritan 32V china toilet • **MASTER STATEROOM:** • Master Head with Shower: •

Queen-size platform bed • Night Stands • Wood Shutter-Style Cabinets • Cedar-lined closet  
 • **SALON:** • Lower Helm Station • Carpeting Throughout • Couch with End Tables and Lamps •  
 Two Wicker Swivel Tub Chairs with Lamp Table • **AFT DECK:** • Hard Top and Eisenglas  
 Enclosure • Abundant Comfortable Seating and Cocktail table • Varnished Wood Wing Doors •  
 Cabinet with Daewoo Refrigerator & Separate Ice-Maker

**GALLEY:** The U-shaped down galley is large, with good counter space and convenient to the  
 salon via a curved stairway. • KitchenMaid four burner electric cooktop • Mica counter-tops with  
 teak trim • Frigidaire refrigerator/freezer • Frigidaire microwave convection oven and LG  
 microwave over stove • Whirlpool trash compactor • Instant Hot Water System

**ELECTRONICS & ELECTRICAL:** • (2) Gensets-KiloPak 12KW and Phasor 12.5 KW • 2 banks  
 32 volt batteries, (5) 12 volt batteries • (1) Raritan, (1) Sea Ranger & (1) Guest Battery chargers •  
 (1) SMR 550 & (1) Standard Horizon VHF's • Raymarine RP650 Autopilot • (2) Garmin 4208  
 Chartplotters • (2) Hummingbird 153 Depth Sounders • VDO/Standard log/speed indicators, (2)  
 Danforth compass's • Furuno Radar (unoperable) • Kenwood stereo • 50 amp shore-power cord

**MECHANICAL:** Each engine is housed in its own engine-room on either side of the companion-  
 way leading to the aft staterooms. • Twin Detroit Diesel 6 92TI's • Fuel management system •  
 Marine Air/Cruisair A/C units • CO2 75# fire suppression system • Two spare props, & one shaft  
 • Morse controls • AC Delco air compressor • (5) electric & (2) manual bilge-pumps • Hydraulic  
 Steering system

**DECK:** The flybridge/upper helm is large with ample seating for entertaining. The side-decks  
 are wide for ease of access to the bow. There is bow seating for several people. The aft deck is  
 fully-enclosed. • Swim-platform • Vetus Elite electric windlass • Upper helm station • Varnished  
 railings • (3) anchors-FX 55 Fortress/60H Danforth/60# Plow

• Fresh exterior Awlgrip 2012 • Fresh annual bottom paint 2015 • Two deck boxes on forward  
 deck, Marquipt Boarding Stairs • 110 volt dingy davit • 2009 Walker Bay 11'2" Rigid bottom  
 inflatable w/ Tohatsu 15 HP four stroke outboard engine

## Основная информация

**Тип судна:** Моторная яхта

**Модельный год:** 1971

**Год постройки:** 1971

**Страна:** United States

## Размеры

---

**Длина общая:** 53' 0" (16.15m)

**Ширина:** 15' 10" (4.83m)

**Макс. осадка:** 4' 0" (1.22m)

**Трапы:** 17' 0" (5.18m)

## Скорость, вместимость и масса

---

**Водоизмещение:** 55000 Pounds

**Вместимость воды:** 300 Gallons

**Вместимость сточного бака:** 50 Gallons

**Объем топливного бака:** 600 Gallons

## Размещение

---

**Всего кают:** 3

**Всего коек:** 3

**Спальные места:** 5

**Всего ком. состава:** 3

## Корпус и палуба

---

**Материал корпуса:** Fiberglass

**Отделка корпуса:** Fiberglass

## Информация о двигателе

---

**Двигатели:** 2

**Производитель:** Detroit Diesel / Johnson & Towers

**Модель:** 6 92TI

**Тип двигателя:** Inboard

**Тип топлива:** Diesel

# ФОТОГРАФИИ













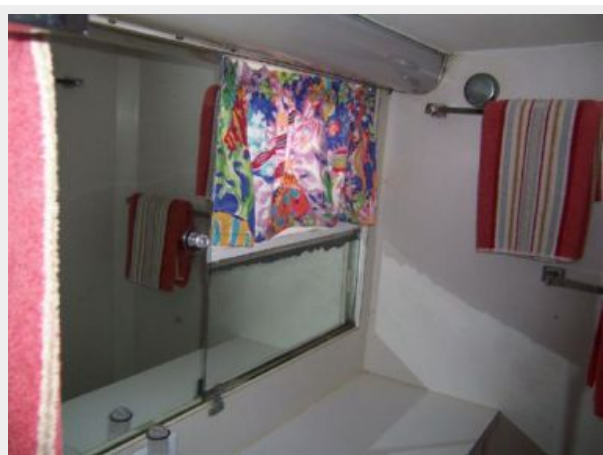




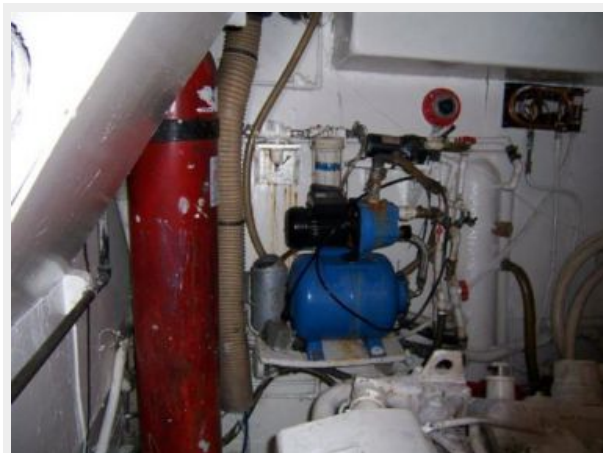














# КОНТАКТЫ

---

Андрей Шестаков (Andrey Shestakov) – ведущий яхтенный брокер отдела продаж яхт и судов компании Shestakov Yacht Sales Inc. Официальный представитель Shestakov Yacht Sales Inc. для русскоговорящих клиентов в центральном офисе компании в Майами/Форт Лодердейл/Флорида/США.

## Контактная информация

---

Email: [andrey@shestakovyachtsales.com](mailto:andrey@shestakovyachtsales.com)

Web: [shestakovyachtsales.com](http://shestakovyachtsales.com)

## Телефоны

---

Краснодарский край: **+7(918)465-66-44**

США, Майами, Флорида: **+1(954)274-4435**

## Время работы

---

Понедельник – Суббота: **9:00 - 21:00**  
EDT

Воскресенье: **Закрито**

## Адрес

---



Harbour Towne Marina, 850 NE 3rd St,  
STE 213, Dania, FL 33004