

CRICKET — DONZI



Builder: DONZI

Year Built: 2001

Model: Sport Fisherman

Price: PRICE ON APPLICATION

Location: United States

LOA: 80' 0" (24.38m)

Beam: 21' 5" (6.53m)

Min Draft: 6' 0" (1.83m)

Max Draft: 6' 5" (1.96m)

Cruise Speed: 25 Kts. (29 MPH)

Our experienced yacht broker, Andrey Shestakov, will help you choose and buy a yacht that best suits your needs **Cricket — DONZI** from our catalogue. Presently, at Shestakov Yacht Sales Inc., we have a wide variety of yachts available on our sale's list. We also work in close contact with all the big yacht manufacturers from all over the world.

If you would like to buy a yacht **Cricket — DONZI** or would like help answering any questions concerning purchasing, selling or chartering a yacht, please call **+1(954)274-4435**

TABLE OF CONTENTS

TABLE OF CONTENTS	2
SPECIFICATIONS	4
Overview	4
Basic Information	4
Dimensions	4
Speed, Capacities and Weight	5
Accommodations	5
Hull and Deck Information	5
Engine Information	5
DETAILED INFORMATION	6
Vessel Walkthrough	6
Salon	6
Dinette	6
Galley	7
Master Stateroom	7
Master Head	8
Port Guest Stateroom	8
Forward VIP Stateroom	9
Guest Head for Port Guest Stateroom	9
Helm	9
Enclosed Flybridge	10
Electronics	11
Electrical System	12
Mechanical Equipment	12
Engine Room	12
Aft Deck	13
Cockpit	13
Decks	14

Hull	14
Tuna Tower	15
Crew Quarters	15
Exclusions	15
Broker's Remarks	15
Exclusions	16
Disclaimer	16
PHOTOS	17
CONTACTS	31
Contact details	31
Telephones	31
Office hours	31
Address	31

SPECIFICATIONS

Overview

This boat is absolutely amazing. It is undoubtedly one of the most well kept and mechanically maintained vessels offered for sale. If you are seeking a large comfortable sport fishing yacht, Cricket is the boat for you. With a yacht styled interior, she is just as capable as a cruising yacht that allows you to occasionally pursue the pleasure of catching your own dinner.

Her accommodations are spacious, featuring three stateroom, crew's quarters, a huge salon and galley. The enclosed flybridge is unique in that the helm is aft with comfortable skylounge seating forward. The enormous cockpit features an observation mezzanine with seating and all of the amenities of a serious sport fishing machine. She'll cruise at 25 knots with a range in excess of 400 miles for those extended fishing expeditions.

Come see Cricket and you will not be disappointed. She is priced competitively and ready to go!

Basic Information

Category: Sport Fisherman

Sub Category: Convertible

Model Year: 2001

Year Built: 2001

Country: United States

Vessel Top: Full / Tuna Tower

Fly Bridge: Yes

Cockpit: Yes

Dimensions

LOA: 80' 0" (24.38m)

Beam: 21' 5" (6.53m)

Min Draft: 6' 0" (1.83m)

Max Draft: 6' 5" (1.96m)

Speed, Capacities and Weight

Cruise Speed: 25 Kts. (29 MPH)

Cruise Speed RPM: 1850 Kts.

Displacement: 125000 Pounds

Gross Tonnage: 114 Pounds

Water Capacity: 350 Gallons

Holding Tank: 150 Gallons

Fuel Capacity: 3200 Gallons

Accommodations

Total Cabins: 3

Total Berths: 4

Sleeps: 6

Total Heads: 1

Crew Cabin: 1

Crew Berths: 2

Crew Sleeps: 2

Crew Heads: 1

Hull and Deck Information

Hull Material: Fiberglass

Engine Information

Engines: 2

Manufacturer: MTU

Model: 16V2000

Engine Type: Inboard

Fuel Type: Diesel

DETAILED INFORMATION

Vessel Walkthrough

As you enter the salon you'll find the large sofa to port and hi/lo dining table. Forward to port is the gourmet galley. To starboard are access stairs to the enclosed fly bridge, entertainment center, and dinette. Down the companionway you find the large owner's stateroom, guest bunk stateroom, and centerline VIP stateroom forward. The enclosed flybridge features the aft main helm with a comfortable forward lounge and forward docking station.

Salon

Air conditioned

Sofa

Electric hi/lo table

Occasional chair

TV, flat screen

Entertainment center

Custom wool carpeting

Staircase to enclosed bridge

Storage beneath sofa

Entry from mezzanine deck

LED lighting

SAT TV, KVH M5

Canvas carpet covers

AC/DC electrical central panel

VHF Radio

Dinette

"U" Shaped dinette

Seating for 6

Storage beneath seating

Custom table top

Galley

Custom dual level Corian counter tops

Dual stainless under the refrigerators

Over sized microwave/convection oven

Ample storage cabinets

Trash compactor

Dual sinks

Four leather bar stools

All new appliances

New teak & holly flooring

Garbage disposal

Thermador glass cooktop

U-line ice maker

Master Stateroom

Oversized queen berth

Night stands

Flush mounted TV

Two large closets

Ample storage drawers

Air conditioning

LED lighting

Mirrored vanity

Chest of drawers

Custom wool carpeting

En suite head

Totally private

Settee

Bedside lamps

Built-in safe

Master Head

Spacious

Large stall shower

Sink

Mirrored vanity

Head, Headhunter Royal Flush

LED lighting

Storage cabinets

Storage drawers

Port Guest Statroom

Two large athwartship bunks

Ladder for upper berth

LED lighting

Storage drawers

TV

Private access to head

Forward VIP Stateroom

Center line queen

Storage beneath berth

Drawer storage

LED lighting

Air conditioning

Closet

Private en suite with Headhunter toilet, sink, mirrored vanity, stall shower, storage cabinets

Guest Head for Port Guest Stateroom

Head, Headhunter Royal Flush

Sink

Mirrored vanity

Cabinets

Storage

Circular stall shower Note: This head also serves as the day head with a private entry from the companionway

Helm

Main:

Located aft in Enclosed Bridge

Steering system (recently rebuilt)

Teak pod with single level controls

Custom mounted electronics

Custom leather helm & companion seats

Switches & gauges

Storage locker

Ritchie compass

Separate Forward Helm:

Controls

Jog stick steering

Gauges

Switches

Engine monitors

Hidden under tambour door

Enclosed Flybridge

Spacious

Aft main helm

Forward docking helm

Aft exterior helm for fishing and docking

TV, flatscreen

Storage lockers

Sofa, forward

Decorative lamps

Stairs to salon

Barrel chairs (2)

Pneumatic double door to aft deck

Ideal for entertaining

Serves as a second salon or sky lounge

Air conditioned

LED lighting

Incredible electronics array

Ottoman

Leather helm & companion seats

Upgraded wiper/washer system

Electronics

Gyro compass, Sperry

Electronic DDC Engine monitors

(2) 19" Hatteland display screens

(1) 15" Hatteland display screen

Furuno Navnet 30 plotter

Furuno 100nm Radar w/ 6' antenna

Navnet Vx2 plotter/radar w/ 4' antenna

ICOM M504 VHF Radio

ICOM M506 VHF Radio with AIS

(1) FLIR night vision facing forward

(1) FLIR night vision facing aft

NAIAD bow thruster

Garmin 6212 color plotter

Chirp transducer for sounder

Furuno RD30 depth, speed water temp

Anshultz Autopilot Star D

Anshultz Rudder angle indicator

Datamarine digital depth sounder

Thrane SAT phone/ Fax

KVH SAT TV

Camera monitors through out boat

Electrical System

12/24 DC volt service

240/120V AC, 100 amp shore power

6, 8D batteries, 3 banks

2, 8D batters for windlass

2, 32kw Northern Lights generators, both with approximately 4500 hrs.

2, Dolphin 80 amp, 12/24 battery charge

2, Acme shorepower transformers

Mechanical Equipment

Alfa Laval fuel polishing system

Chilled water AC system w/ three chillers

Sea Recovery water maker

Eskimo ice machine

Rigid 110V, air compressor

Oil change system for engines and generators

Dual cylinders electric trim tabs

Naiad Hydraulic bow thruster

(2) E man Switlik emergency life rafts

Manual back up steering system

Manual backup clutch & throttles system

Nutone central vacuum system

Engine Room

Twin MTU, 16V2000, 1800 HP engines - Port 2500 hrs, Starboard 4500 hrs

Twin disc 2:09 to 1 reduction gears

Engine Stop, starts, DDC monitors

(2) Fire suppression systems

Tides Marine dripless shaft seals

Naiad hydraulic PRO on both main engines for bow thruster

Sea Star hydraulic steering systems

Varnished teak & holly flooring

Access door from cockpit

120V, 20 gal water heater

Dual Racor fuel filters

Emergency engine driven bulge pump

CRS 300 Engine coolant recovery system

Access door from crew quarters

Engine room blowers

Aft Deck

Observation mezzanine

Seating port and starboard

Teak decking

Freezers beneath mezzanine seats

High gloss varnished aft bulkhead

Cockpit

Teak sole

Transom baitwell with windows

Teak covering boards

Murray Brothers fighting chair

Transom door

Hot/cold shower, hand held

Saltwater washdown

Fresh water washdown

Twin refrigerators/freezers

Varnished teak transom

Eskimo ice machine outlet port and starboard tackle drawers

Rod holder

8 Underwater lights Cockpit canvas fly cover

Decks

Non-skid foredeck and side decks

Aluminum bow rail

Aluminum safety rails, aft bridge deck and mezzanine

24V, Wesmar Windless

Bow pulpit w/ 110lb stainless plow anchor

Painted, 2013

Anchor rode: 50' chain, 400' line

Varnished teak toe rail

Spare propellers

Hull

Painted, 2013

Port lights

Tuna Tower

Pipewelders Tuna tower

Tower sunshade

Control box

Controls & steering Twin DDC engine monitors

Naiad bow thruster control

Furuno Navnet 3D monitor

Ritchie compass

VHF radio

Two, ACR spotlights

Rupp outriggers - 41' (new 2013)

8 Food lights

Crew Quarters

Captains berth, port

Crew upper/lower bunks, starboard

TV's in each berth

Miele washer & dryer

Deep freeze, large custom built

Access door to engine room

Twin crew heads shower stall

Exclusions

Owner and crews personal effects, fishing rods, tackle, gear, tools, spare parts

Broker's Remarks

A detailed ships log is available for buyers inspection. Many electrical and mechanical systems have had redundant systems added. Every part of this vessel is in above average condition, having been maintained by a professional captain. Your personal inspection will show you that this is the best available vessel of her size and vintage

Exclusions

Owner's personal belongings.

Disclaimer

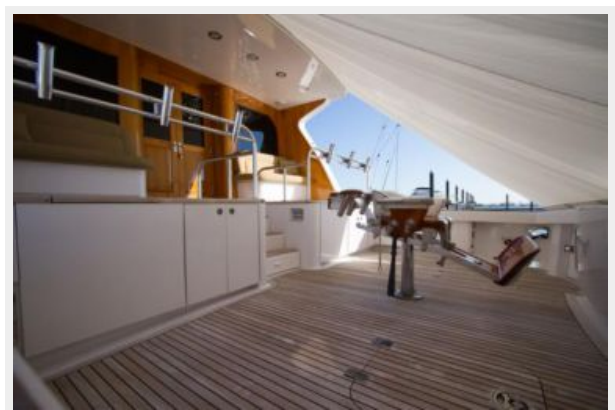
The Company offers the details of this vessel or yacht in good faith but cannot guarantee or warrant the accuracy of this information nor warrant the condition of the vessel. A buyer should instruct his representatives, agents, or his surveyors, to investigate such details as the buyer desires validated. This vessel or yacht is offered subject to prior sale, price change, or withdrawal without notice.

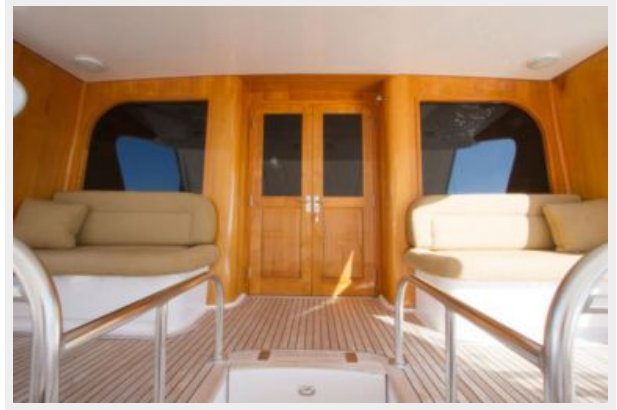
PHOTOS

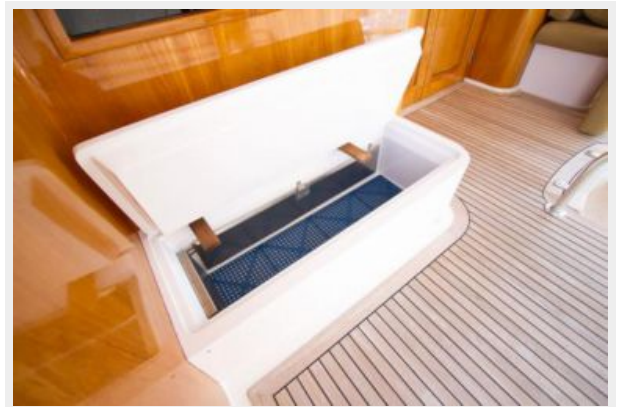


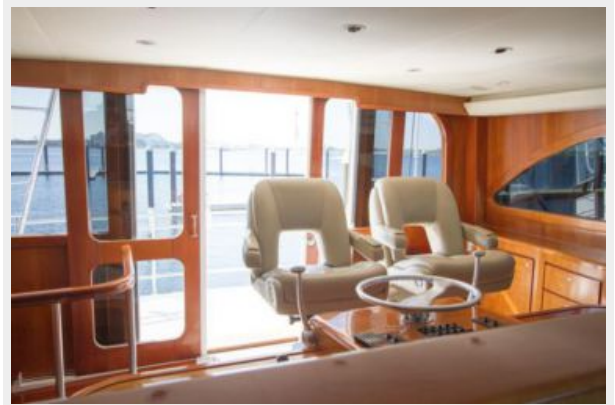


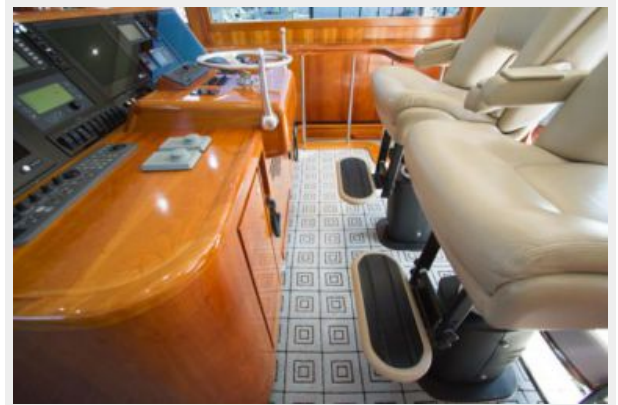
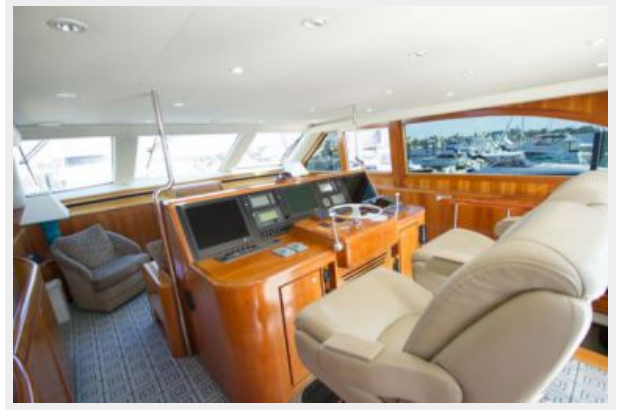
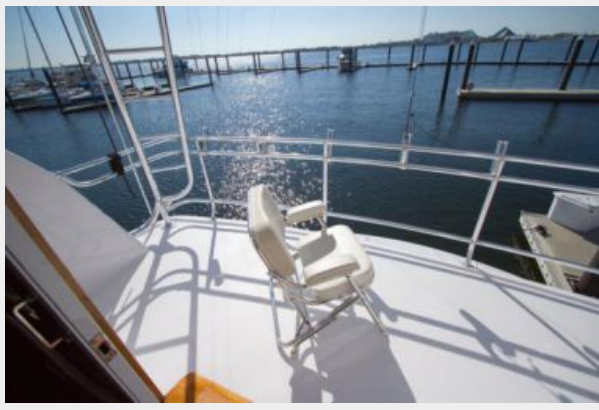


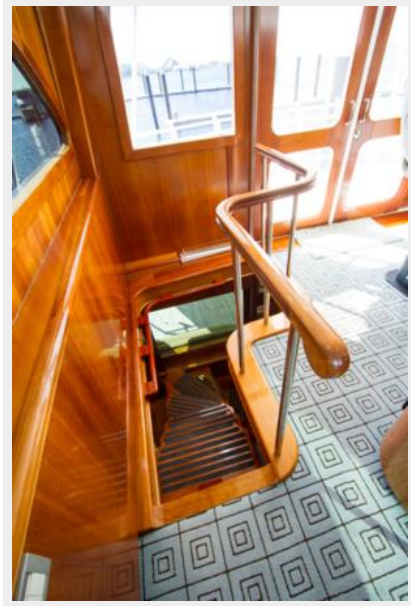


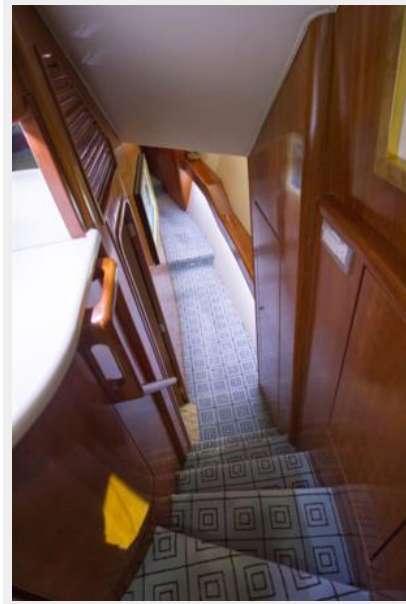




















CONTACTS

Andrey Shestakov, leading yacht broker of the sales department of Shestakov Yacht Sales Inc. Shestakov Yacht Sales Inc., the official representative of the Miami/Fort Lauderdale FL headquarters.

Contact details

Email: andrey@shestakovyachtsales.com

Web: shestakovyachtsales.com/en/

Telephones

USA: +1(954)274-4435

Office hours

Monday – Saturday: **9:00 - 21:00** EDT

Sunday: **closed**

Address



Harbour Towne Marina, 850 NE 3rd St,
STE 213, Dania, FL 33004