

## CRICKET — DONZI



**Судостроитель:** DONZI

**Год постройки:** 2001

**Модель:** Катер для спортивной рыбалки

**Цена:** **ЦЕНА ЯХТЫ ПО ЗАПРОСУ**

**Местонахождение:** United States

**Длина общая:** 80' 0" (24.38m)

**Ширина:** 21' 5" (6.53m)

**Мин. осадка:** 6' 0" (1.83m)

**Макс. осадка:** 6' 5" (1.96m)

**Крейс. скорость:** 25 Kts. (29 MPH)

Купить Cricket — DONZI а также выбрать подходящую вам яхту из нашего каталога яхт вам поможет опытный яхтенный брокер Андрей Шестаков. На сегодняшний день компания Shestakov Yacht Sales Inc. имеет большое количество яхт в собственном списке продаж, а также тесно сотрудничает со всеми крупными яхтенными производителями по всему миру.

Для того чтобы купить яхту Cricket — DONZI а также проконсультироваться по любому вопросу связанному с покупкой, продажей, чартером яхт позвоните по телефону **+7(918)465-66-44**.

# ОГЛАВЛЕНИЕ

---

ОГЛАВЛЕНИЕ	2
ХАРАКТЕРИСТИКИ	4
Обзор	4
Основная информация	4
Размеры	4
Скорость, вместимость и масса	5
Размещение	5
Корпус и палуба	5
Информация о двигателе	5
ПОДРОБНОЕ ОПИСАНИЕ	6
Vessel Walkthrough	6
Salon	6
Dinette	6
Galley	7
Master Stateroom	7
Master Head	8
Port Guest Stateroom	8
Forward VIP Stateroom	9
Guest Head for Port Guest Stateroom	9
Helm	9
Enclosed Flybridge	10
Electronics	11
Electrical System	12
Mechanical Equipment	12
Engine Room	12
Aft Deck	13
Cockpit	13
Decks	14

---

Hull	14
Tuna Tower	15
Crew Quarters	15
Exclusions	15
Broker's Remarks	15
Исключения	16
Отказ от ответственности	16
ФОТОГРАФИИ	17
КОНТАКТЫ	31
Контактная информация	31
Телефоны	31
Время работы	31
Адрес	31

# ХАРАКТЕРИСТИКИ

## Обзор

This boat is absolutely amazing. It is undoubtedly one of the most well kept and mechanically maintained vessels offered for sale. If you are seeking a large comfortable sport fishing yacht, Cricket is the boat for you. With a yacht styled interior, she is just as capable as a cruising yacht that allows you to occasionally pursue the pleasure of catching your own dinner.

Her accommodations are spacious, featuring three stateroom, crew's quarters, a huge salon and galley. The enclosed flybridge is unique in that the helm is aft with comfortable skylounge seating forward. The enormous cockpit features an observation mezzanine with seating and all of the amenities of a serious sport fishing machine. She'll cruise at 25 knots with a range in excess of 400 miles for those extended fishing expeditions.

Come see Cricket and you will not be disappointed. She is priced competitively and ready to go!

## Основная информация

**Тип судна:** Катер для спортивной рыбалки

**Подкатегория:** Convertible

**Модельный год:** 2001

**Год постройки:** 2001

**Страна:** United States

**Верх:** Full / Tuna Tower

**Открытая палуба мостика:** Да

**Кубрик:** Да

## Размеры

**Длина общая:** 80' 0" (24.38m)

**Ширина:** 21' 5" (6.53m)

**Мин. осадка:** 6' 0" (1.83m)

**Макс. осадка:** 6' 5" (1.96m)

## Скорость, вместимость и масса

---

**Крейс. скорость:** 25 Kts. (29 MPH)

**Крейсерская скорость поворота:** 1850 Kts.

**Водоизмещение:** 125000 Pounds

**Чистый вес:** 114 Pounds

**Вместимость воды:** 350 Gallons

**Вместимость сточного бака:** 150 Gallons

**Объем топливного бака:** 3200 Gallons

## Размещение

---

**Всего кают:** 3

**Всего коек:** 4

**Спальные места:** 6

**Всего ком. состава:** 1

**Каюты экипажа:** 1

**Койки экипажа:** 2

**Спальных мест экипажа:** 2

**Комм. состав экипажа:** 1

## Корпус и палуба

---

**Материал корпуса:** Fiberglass

## Информация о двигателе

---

**Двигатели:** 2

**Производитель:** MTU

**Модель:** 16V2000

**Тип двигателя:** Inboard

**Тип топлива:** Diesel

---

# ПОДРОБНОЕ ОПИСАНИЕ

---

## Vessel Walkthrough

---

As you enter the salon you'll find the large sofa to port and hi/lo dining table. Forward to port is the gourmet galley. To starboard are access stairs to the enclosed fly bridge, entertainment center, and dinette. Down the companionway you find the large owner's stateroom, guest bunk stateroom, and centerline VIP stateroom forward. The enclosed flybridge features the aft main helm with a comfortable forward lounge and forward docking station.

## Salon

---

Air conditioned

Sofa

Electric hi/lo table

Occasional chair

TV, flat screen

Entertainment center

Custom wool carpeting

Staircase to enclosed bridge

Storage beneath sofa

Entry from mezzanine deck

LED lighting

SAT TV, KVH M5

Canvas carpet covers

AC/DC electrical central panel

VHF Radio

## Dinette

---

"U" Shaped dinette

---

Seating for 6

Storage beneath seating

Custom table top

## **Galley**

---

Custom dual level Corian counter tops

Dual stainless under the refrigerators

Over sized microwave/convection oven

Ample storage cabinets

Trash compactor

Dual sinks

Four leather bar stools

All new appliances

New teak & holly flooring

Garbage disposal

Thermador glass cooktop

U-line ice maker

## **Master Stateroom**

---

Oversized queen berth

Night stands

Flush mounted TV

Two large closets

Ample storage drawers

Air conditioning

LED lighting

---

Mirrored vanity

Chest of drawers

Custom wool carpeting

En suite head

Totally private

Settee

Bedside lamps

Built-in safe

## Master Head

---

Spacious

Large stall shower

Sink

Mirrored vanity

Head, Headhunter Royal Flush

LED lighting

Storage cabinets

Storage drawers

## Port Guest Statroom

---

Two large athwartship bunks

Ladder for upper berth

LED lighting

Storage drawers

TV

Private access to head



---

## Forward VIP Stateroom

---

Center line queen

Storage beneath berth

Drawer storage

LED lighting

Air conditioning

Closet

Private en suite with Headhunter toilet, sink, mirrored vanity, stall shower, storage cabinets

---

## Guest Head for Port Guest Stateroom

---

Head, Headhunter Royal Flush

Sink

Mirrored vanity

Cabinets

Storage

Circular stall shower Note: This head also serves as the day head with a private entry from the companionway

---

## Helm

---

### Main:

Located aft in Enclosed Bridge

Steering system (recently rebuilt)

Teak pod with single level controls

Custom mounted electronics

Custom leather helm & companion seats

Switches & gauges

Storage locker

Ritchie compass

### **Separate Forward Helm:**

Controls

Jog stick steering

Gauges

Switches

Engine monitors

Hidden under tambour door

## **Enclosed Flybridge**

---

Spacious

Aft main helm

Forward docking helm

Aft exterior helm for fishing and docking

TV, flatscreen

Storage lockers

Sofa, forward

Decorative lamps

Stairs to salon

Barrel chairs (2)

Pneumatic double door to aft deck

Ideal for entertaining

Serves as a second salon or sky lounge

Air conditioned

LED lighting

Incredible electronics array

Ottoman

Leather helm & companion seats

Upgraded wiper/washer system

---

## Electronics

---

Gyro compass, Sperry

Electronic DDC Engine monitors

(2) 19" Hatteland display screens

(1) 15" Hatteland display screen

Furuno Navnet 30 plotter

Furuno 100nm Radar w/ 6' antenna

Navnet Vx2 plotter/radar w/ 4' antenna

ICOM M504 VHF Radio

ICOM M506 VHF Radio with AIS

(1) FLIR night vision facing forward

(1) FLIR night vision facing aft

NAIAD bow thruster

Garmin 6212 color plotter

Chirp transducer for sounder

Furuno RD30 depth, speed water temp

Anshultz Autopilot Star D

Anshultz Rudder angle indicator

Datamarine digital depth sounder

Thrane SAT phone/ Fax

KVH SAT TV

---

Camera monitors through out boat

## Electrical System

---

12/24 DC volt service

240/120V AC, 100 amp shore power

6, 8D batteries, 3 banks

2, 8D batters for windlass

2, 32kw Northern Lights generators, both with approximately 4500 hrs.

2, Dolphin 80 amp, 12/24 battery charge

2, Acme shorepower transformers

## Mechanical Equipment

---

Alfa Laval fuel polishing system

Chilled water AC system w/ three chillers

Sea Recovery water maker

Eskimo ice machine

Rigid 110V, air compressor

Oil change system for engines and generators

Dual cylinders electric trim tabs

Naiad Hydraulic bow thruster

(2) E man Switlik emergency life rafts

Manual back up steering system

Manual backup clutch & throttles system

Nutone central vacuum system

## Engine Room

---

---

Twin MTU, 16V2000, 1800 HP engines - Port 2500 hrs, Starboard 4500 hrs

Twin disc 2:09 to 1 reduction gears

Engine Stop, starts, DDC monitors

(2) Fire suppression systems

Tides Marine dripless shaft seals

Naiad hydraulic PRO on both main engines for bow thruster

Sea Star hydraulic steering systems

Varnished teak & holly flooring

Access door from cockpit

120V, 20 gal water heater

Dual Racor fuel filters

Emergency engine driven bulge pump

CRS 300 Engine coolant recovery system

Access door from crew quarters

Engine room blowers

## **Aft Deck**

---

Observation mezzanine

Seating port and starboard

Teak decking

Freezers beneath mezzanine seats

High gloss varnished aft bulkhead

## **Cockpit**

---

Teak sole

Transom baitwell with windows

Teak covering boards

Murray Brothers fighting chair

Transom door

Hot/cold shower, hand held

Saltwater washdown

Fresh water washdown

Twin refrigerators/freezers

Varnished teak transom

Eskimo ice machine outlet port and starboard tackle drawers

Rod holder

8 Underwater lights Cockpit canvas fly cover

## Decks

---

Non-skid foredeck and side decks

Aluminum bow rail

Aluminum safety rails, aft bridge deck and mezzanine

24V, Wesmar Windless

Bow pulpit w/ 110lb stainless plow anchor

Painted, 2013

Anchor rode: 50' chain, 400' line

Varnished teak toe rail

Spare propellers

## Hull

---

Painted, 2013

Port lights

---

## Tuna Tower

---

Pipewelders Tuna tower

Tower sunshade

Control box

Controls & steering Twin DDC engine monitors

Naiad bow thruster control

Furuno Navnet 3D monitor

Ritchie compass

VHF radio

Two, ACR spotlights

Rupp outriggers - 41' (new 2013)

8 Food lights

---

## Crew Quarters

---

Captains berth, port

Crew upper/lower bunks, starboard

TV's in each berth

Miele washer & dryer

Deep freeze, large custom built

Access door to engine room

Twin crew heads shower stall

---

## Exclusions

---

Owner and crews personal effects, fishing rods, tackle, gear, tools, spare parts

---

## Broker's Remarks

---

A detailed ships log is available for buyers inspection. Many electrical and mechanical systems have had redundant systems added. Every part of this vessel is in above average condition, having been maintained by a professional captain. Your personal inspection will show you that this is the best available vessel of her size and vintage

---

## **Исключения**

---

При продаже яхты исключаются личные вещи владельца.

---

## **Отказ от ответственности**

---

Компания предоставляет описание судна или яхты добросовестно, но не может гарантировать точность этой информации, а также не ручается за техническое состояние. Покупатель должен проинструктировать своих агентов или оценщиков исследовать представленную информацию более подробно, по собственному желанию. Продажа судна или яхты, изменение цены или снятие с продажи будет происходить без предварительного уведомления.



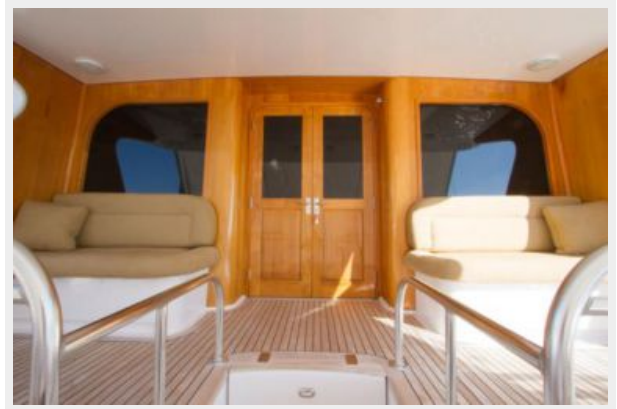
# ФОТОГРАФИИ

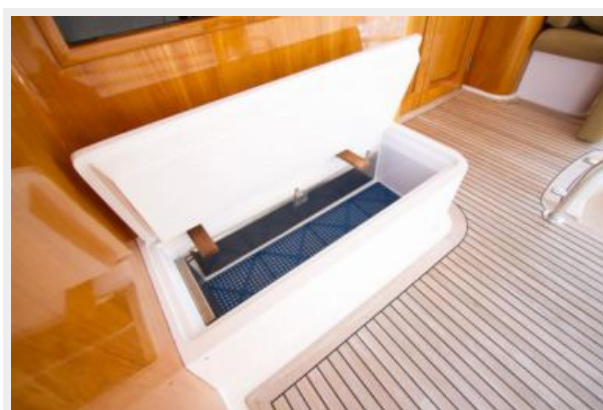
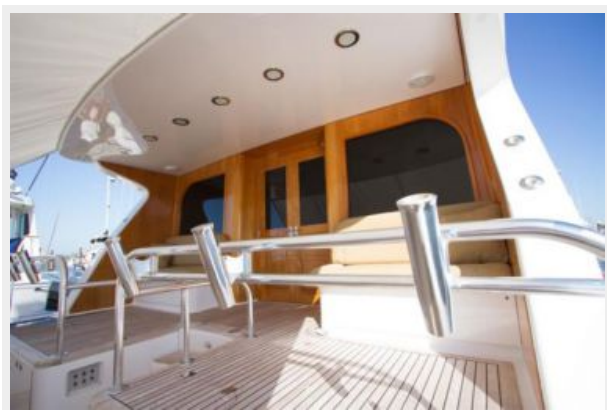


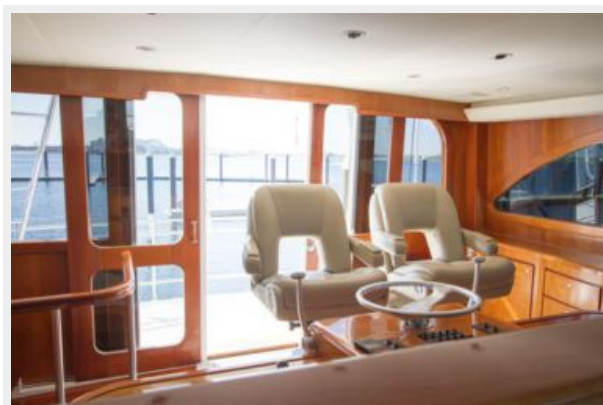


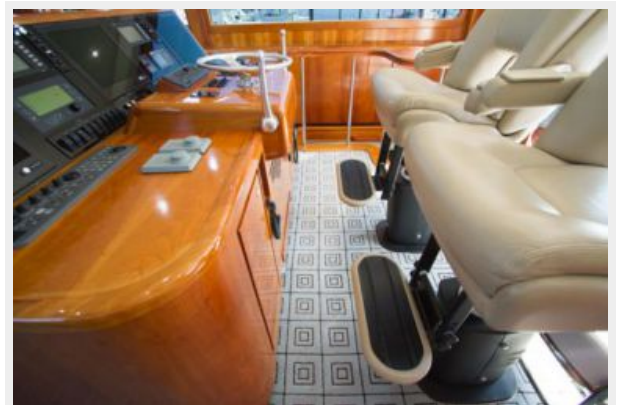
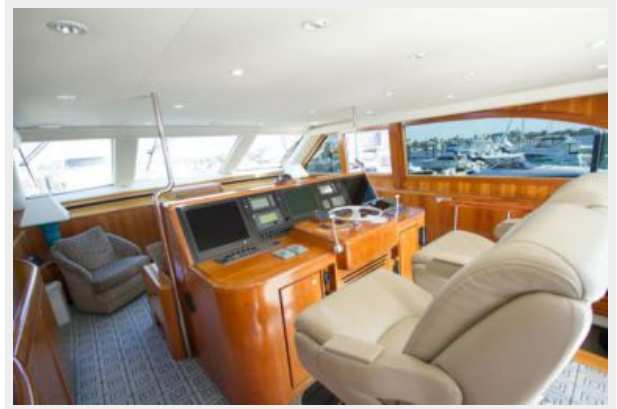




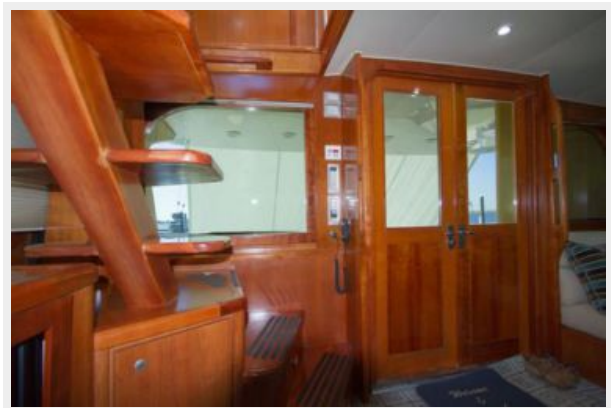
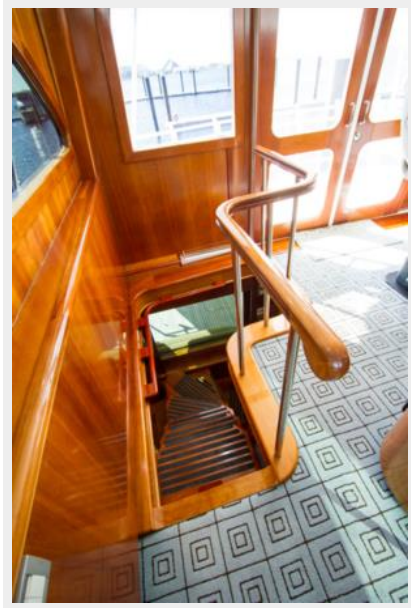


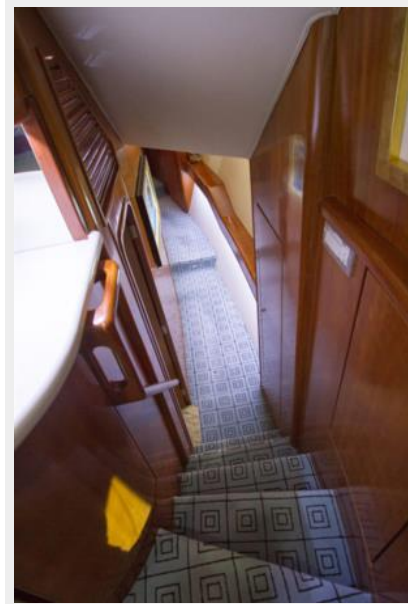




















# КОНТАКТЫ

---

Андрей Шестаков (Andrey Shestakov) – ведущий яхтенный брокер отдела продаж яхт и судов компании Shestakov Yacht Sales Inc. Официальный представитель Shestakov Yacht Sales Inc. для русскоговорящих клиентов в центральном офисе компании в Майами/Форт Лодердейл/Флорида/США.

## Контактная информация

---

Email: [andrey@shestakovyachtsales.com](mailto:andrey@shestakovyachtsales.com)

Web: [shestakovyachtsales.com](http://shestakovyachtsales.com)

## Телефоны

---

Краснодарский край: **+7(918)465-66-44**

США, Майами, Флорида: **+1(954)274-4435**

## Время работы

---

Понедельник – Суббота: **9:00 - 21:00**  
EDT

Воскресенье: **Закрито**

## Адрес

---



Harbour Towne Marina, 850 NE 3rd St,  
STE 213, Dania, FL 33004