

EXOCET — PDQ



Судостроитель: PDQ

Год постройки: 2005

Модель: Катамаран

Цена: **ЦЕНА ЯХТЫ ПО ЗАПРОСУ**

Местонахождение: United States

Длина общая: 34' 0" (10.36m)

Ширина: 16' 10" (5.13m)

Макс. осадка: 2' 4" (0.71m)

Купить **EXOCET — PDQ** а также выбрать подходящую вам яхту из нашего каталога яхт вам поможет опытный яхтенный брокер Андрей Шестаков. На сегодняшний день компания **Shestakov Yacht Sales Inc.** имеет большое количество яхт в собственном списке продаж, а также тесно сотрудничает со всеми крупными яхтенными производителями по всему миру.

Для того чтобы купить яхту **EXOCET — PDQ** а также проконсультироваться по любому вопросу связанному с покупкой, продажей, чартером яхт позвоните по телефону **+7(918)465-66-44**.

ОГЛАВЛЕНИЕ

ОГЛАВЛЕНИЕ	2
ХАРАКТЕРИСТИКИ	3
Обзор	3
Основная информация	5
Размеры	5
Скорость, вместимость и масса	6
Размещение	6
Корпус и палуба	6
Информация о двигателе	6
ФОТОГРАФИИ	7
КОНТАКТЫ	15
Контактная информация	15
Телефоны	15
Время работы	15
Адрес	15

ХАРАКТЕРИСТИКИ

Обзор

EXOCET is a **one owner** PDQ 34 Powercat that shows pride of ownership throughout. Well equipped with the best equipment; including twin economical 75 hp Yanmar diesels (1000hrs!), Northern Lights Genset, dual air-conditioning, Village Marine water maker, two Raymarine E series radar/chartplotters, Freedom inverter, Bimini top and window coverings, and more.

This is the perfect boat for the Great Loop or Bahamas cruising and packs an unmatched amount of living, entertainment, and storage space in a rugged and seaworthy 34' package.

The PDQ 34's economy, ease of operation and maintenance, combined with her Canadian craftsmanship build quality have made her the most popular power catamaran in her class.

EXOCET is as nice an example of this design as you will find on the market, and easy to see in beautiful St Augustine, FL. Make plans to come and see her today!

Boat Name EXOCET **Specs** Hull Shape: Catamaran **Dimensions** LOA: 34 ft 6 in Beam: 16 ft 10 in LWL: 33 ft 11 in Maximum Draft: 2 ft 4 in Bridge Clearance: 12 ft 3 in Dry Weight: 15000 lbs **Engines** Engine 1: Engine Brand: Yanmar Engine Type: Inboard Engine/Fuel Type: Diesel Engine Hours: 1000 Engine Power: 75 HP Engine 2: Engine Brand: Yanmar Engine Type: Inboard Engine/Fuel Type: Diesel Engine Hours: 1000 Engine Power: 75 HP **Tanks** Fresh Water Tanks: (80 Gallons) Fuel Tanks: (184 Gallons) **Accommodations** Number of double berths: 3 Number of cabins: 2 Number of heads: 1

Equipment and Specifications

SPEED AND FUEL EFFICIENCY: At a Cruising Speed of 11-13 knots, this boat uses under 5 gal/ per hr., and draws just 2'4".

ENGINES; Twin 75 Yanmar Turbo Diesels w/ approx. 1,000 hrs.,

New heat exchangers on both engines

ELECTRONICS

- 2- Raymarine Radar/Chartplotters- E120 at upper helm and E80 at lower helm
- Raymarine ST 6001 Smartpilot
- Raymarine depth and knotmeter
- Standard Horizon Quest+ VHF at lower helm with RAM mike at upper helm
- Sony stereo

ELECTRICAL & MECHANICAL

- 5 kw Northern Lights Generator 725 hrs
- Xantrex Freedom 20 Inverter
- 4-US2200XC house batteries plus separate engine start and genset batteries
- Rule bilge pumps with auto/manual switches at helm
- 3- windshield wipers

COMFORT & CONVENIENCE

- 2-MarineAir reverse cycle AC units with SMX electronic controls
- Village Marine Tech Water Maker with Remote control panel
- Like New Cushions & Upholstery on Both Interior and Exterior Seating.
- Solstice Window Covers.
- 2- Hella 3- speed fans in salon
- Soft touch interior lighting controls with dimmers
- Interior courtesy lights
- 12v electric plugs at upper helm and in staterooms

GALLEY & HEAD

- Side by side over counter Refrigerator/Freezer,
- Two Burner Gas Stove,
- Deep Stainless Steel Sinks
- Microwave
- Jabsco Electric Freshwater Toilet,
- Separate Walk-in Shower with smoked plexiglass door
- Plate and glass storage racks

DECK & CANVAS

- Custom Bimini Top & Canvas Window Covers,
- Built in cooler storage on flybridge
- Double tank vented propane storage on flybridge
- Quick electric windlass
- CQR anchor with chain and rode
- Danforth backup anchor
- Line and fenders
- Stainless steel dinghy davits
- Folding swim ladder mounted on port sugar scoop.

Accommodations

LOWER HELM: Adjacent to a seating area & stowaway chart table, the lower helm is visible to

the Salon & Dining Table, (which generously seats six) and Galley, with convertible pass-thru.

GALLEY is forward on the port side and open to the salon. Galley features 12v side by side refrigerator/freezer, 2 burner propane range, deep SS sink, microwave, and generous counter and storage space

TWO SPACIOUS CABINS: Offering QUEEN BEDS, and loads of easy access storage, including hanging closets. (For additional overnight guests, the salon table converts into a third queen bunk.) Terrific ventilation and views from large aft facing hatches and sidelights.

HEAD is forward on the starboard side and features electric toilet, separate walk-in shower with plexiglass door, and integrated wash basin

UPPER HELM AND DECK: Fully equipped, the upper helm is accessed by steps (instead of a ladder) and has room for six (or more) passengers, built in cooler storage, and plenty of storage for supplies and life vests.

THE MAIN DECK: Touted for it's wide two-person pass-ways & safety railings, this PDQ also offers a roomy bow for lounging, and 4 forward compartments to store dive gear, fenders, folding chairs and more. Forward of the DINGHY DAVITS there is a cushioned bench seat w/ backrest.

STEP-STYLE TRANSOMS provide easy access to the dock, and water - with a port side dive ladder and gear lockers .

EXTRA STORAGE space abounds in the PDQ 34: two large deck lockers fwd, on the transom and flybridge; and cavernous spaces under the settees and companion way floors.

Основная информация

Тип судна: Катамаран

Подкатегория: Крейсер

Модельный год: 2005

Год постройки: 2005

Страна: United States

Размеры

Длина общая: 34' 0" (10.36m)

Ширина: 16' 10" (5.13m)

Макс. осадка: 2' 4" (0.71m)

Трапы: 12' 3" (3.73m)

Скорость, вместимость и масса

Водоизмещение: 15000 Pounds

Вместимость воды: 80 Gallons

Объем топливного бака: 184 Gallons

Размещение

Всего кают: 2

Всего коек: 3

Спальные места: 6

Всего ком. состава: 7

Корпус и палуба

Материал корпуса: Fiberglass

Комплектация корпуса: Катамаран

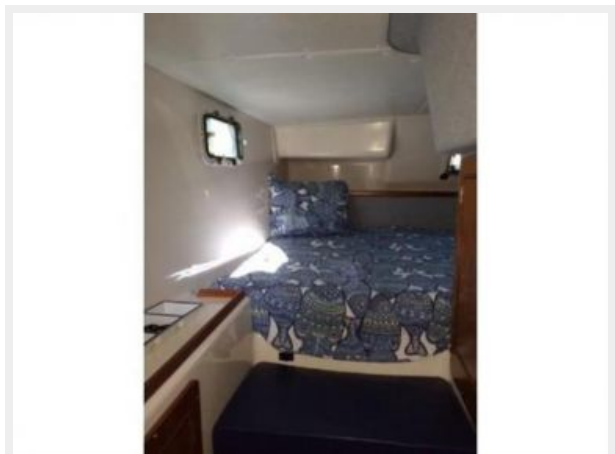
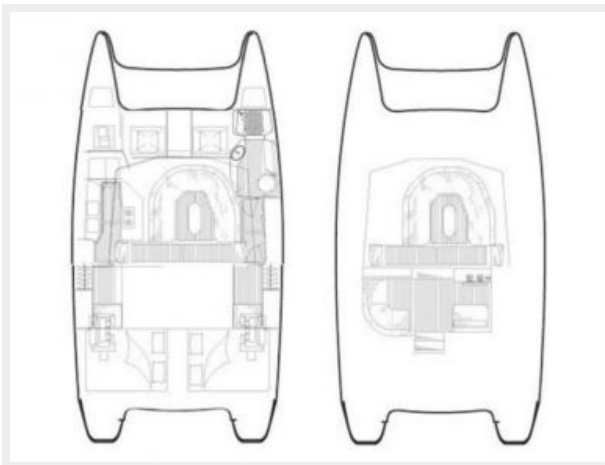
Информация о двигателе

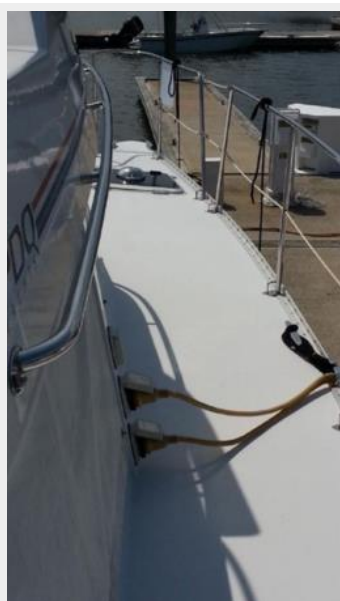
Производитель: Yanmar

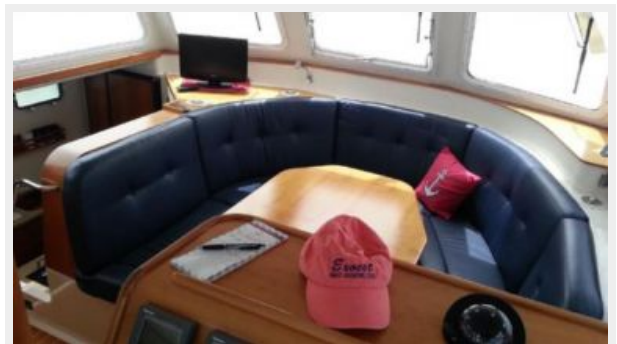
Тип двигателя: Inboard

Тип топлива: Diesel

ФОТОГРАФИИ

















КОНТАКТЫ

Андрей Шестаков (Andrey Shestakov) – ведущий яхтенный брокер отдела продаж яхт и судов компании Shestakov Yacht Sales Inc. Официальный представитель Shestakov Yacht Sales Inc. для русскоговорящих клиентов в центральном офисе компании в Майами/Форт Лодердейл/Флорида/США.

Контактная информация

Email: andrey@shestakovyachtsales.com

Web: shestakovyachtsales.com

Телефоны

Краснодарский край: **+7(918)465-66-44**

США, Майами, Флорида: **+1(954)274-4435**

Время работы

Понедельник – Суббота: **9:00 - 21:00**
EDT

Воскресенье: **Закрито**

Адрес



Harbour Towne Marina, 850 NE 3rd St,
STE 213, Dania, FL 33004