

## B.I.G. — GEMINI CATAMARANS



**Builder:** GEMINI CATAMARANS

**LOA:** 34' 0" (10.36m)

**Year Built:** 2003

**Beam:** 14' 0" (4.27m)

**Model:** Catamaran

**Price:** PRICE ON APPLICATION

**Location:** Puerto Rico

Our experienced yacht broker, Andrey Shestakov, will help you choose and buy a yacht that best suits your needs B.I.G. — GEMINI CATAMARANS from our catalogue. Presently, at Shestakov Yacht Sales Inc., we have a wide variety of yachts available on our sale's list. We also work in close contact with all the big yacht manufacturers from all over the world.

If you would like to buy a yacht B.I.G. — GEMINI CATAMARANS or would like help answering any questions concerning purchasing, selling or chartering a yacht, please call +1(954)274-4435

# TABLE OF CONTENTS

---

TABLE OF CONTENTS	2
SPECIFICATIONS	3
Overview	3
Basic Information	5
Dimensions	5
Speed, Capacities and Weight	5
Accommodations	6
Hull and Deck Information	6
Engine Information	6
PHOTOS	7
CONTACTS	9
Contact details	9
Telephones	9
Office hours	9
Address	9

---

# SPECIFICATIONS

---

## Overview

---

Owner forced to sell!

Already in the best cruising ground in the world!

- New! Standing rigging replaced 7/2017!
- New! Bottom paint new 7/2017!

The Gemini 105MC by Performance Cruising is one of the most popular and affordable cruising catamarans available. This 2003 model incorporates all the updates in later models that made the boat sail faster and better B.I.G. is also in Puerto Rico, one of the best places to start a cruise to the Caribbean, Bahamas and US east coast. It is a US manufactured boat registered in the US. The toughest challenge in cruising the Caribbean Sea, the best cruising ground in the world, is sailing to windward to get to Puerto Rico. B.I.G. is already there! There is no sales tax to buy the boat in Puerto Rico and Puerto Rico is a great place to get your new boat ready for cruising. All US provisioning is available, all US companies ship to Puerto Rico at reasonable rates, all marine services are available and chandleries like West Marine have fully stocked stores.

Unfortunately, health challenges are forcing the seller to give up his beloved boat. His misfortune is your good luck. Don't wait. This boat will go fast.

**Boat Name** B.I.G. **Specs** Builder: Performance Cruising Inc. Flag of Registry: Puerto Rico (US) Keel: Centerboard **Dimensions** LOA: 34 ft 0 in Beam: 14 ft 0 in Displacement: 8600 lbs **Engines** Engine 1: Engine Brand: Westerbeke Year Built: 2003 Engine Model: 30 B Three Engine Type: Inboard Engine/Fuel Type: Diesel Engine Hours: 1429 Propeller: 3 blade propeller Drive Type: Other Engine Power: 27 HP **Tanks** Fresh Water Tanks: (60 Gallons) Fuel Tanks: (36 Gallons) Holding Tanks: (18 Gallons) **Accommodations** Number of double berths: 3 Number of cabins: 3 Number of heads: 1 **Electronics** Radio Autopilot Plotter VHF Depthsounder CD player **Sails** Battened mainsail Genoa **Rigging** Steering wheel **Inside Equipment** Manual bilge pump Marine head Battery charger Air conditioning Hot water Refrigerator Electric bilge pump Microwave oven Heating Oven **Electrical Equipment** Inverter Shore power inlet **Outside Equipment/Extras** Davits Solar panel **Covers** Mainsail cover Genoa cover

## Accommodations

A sliding glass door leads from the cockpit into a central saloon. The saloon features a large U-shaped settee around a dining table. Down to starboard is a spacious galley with ample storage and counter space. Forward is the owner's cabin with a queen berth. Aft of the galley is guest cabin with double berth. A VIP cabin with another queen berth is in the port hull. Forward of the VIP cabin is the nav station and storage. A large head and shower occupies the forward end of the port hull.

- Private owner's cabin with queen berth
- Two private double cabins for guests
- 16,000 btu Mermaid air conditioner
- Galley down arrangement keeps galley clutter out of sight of guests
- Numerous large forward facing opening hatches provide lots of light and ventilation
- U-shaped settee/dinette serves 6 and offers comfortable places to sit back and read a book or watch TV
- 360 degree view from the saloon
- Electric space heater

## Galley

- Voyager 2 burner propane stove with oven and broiler
- Double stainless steel sink
- Large refrigerator - 110 vac/propane powered
- Microwave oven
- Ample counter space
- Lots of handy storage space in galley

## Engine and Mechanical

- Westerbeke 30 B Three 27 hp diesel engine
- Sillette Sonic leg
- Sonic leg can be steered for excellent maneuverability
- Sonic leg can be raised out of the water for corrosion protection and reduced drag
- 6 gallon 110vac/engine heated water heater

## Electronics & Electrical

- Raymarine wheel mounted autopilot
- President VHF radio
- Handheld VHF radio
- **Hummingbird depth sounder - NEW 2015!**
- Sony remote controlled stereo with CD player
- 2 BPsolar 50 watt 2.9 amp solar panels
- 2 Sunsaver 10 solar controllers
- 1500 watt inverter

## Deck & Hull

- Horizon 600 electric windlass
- Delta 35# anchor with 30' chain and 50' rope rode
- Fortress FX 16 anchor with 30' chain and 50' rope rode
- Foldup 3.5# dinghy anchor with 25' 1/2" rope rode

- Dinghy davits
- Twin centerboards
- Kick-up rudders

## Sails & Rigging

- Selden fractional rig with a single adjustable back stay
- Optional 200% roller screecher mounted on a curved track between the bows can be pulled to windward for maximum efficiency
- Screecher can be rolled in and out as an easily handled spinnaker substitute
- 340 sq ft main w/ slab reefing
- Two (2) #40 AST Ocean Primary Winches

## Basic Information

**Category:** Catamaran

**Sub Category:** Catamaran

**Model Year:** 2003

**Year Built:** 2003

**Country:** Puerto Rico

## Dimensions

**LOA:** 34' 0" (10.36m)

**Beam:** 14' 0" (4.27m)

## Speed, Capacities and Weight

**Displacement:** 8600 Pounds

**Water Capacity:** 60 Gallons

**Holding Tank:** 18 Gallons

**Fuel Capacity:** 36 Gallons

## Accommodations

---

Total Cabins: 3	Total Berths: 3
Sleeps: 6	Total Heads: 1

## Hull and Deck Information

---

Hull Material: Fiberglass	Hull Configuration: Catamaran
---------------------------	-------------------------------

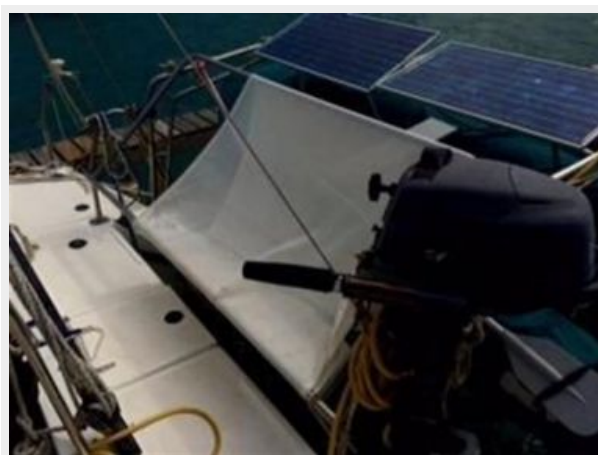
## Engine Information

---

Engines: 1	Manufacturer: Westerbeke
Model: 30 B Three	Engine Type: Inboard
Fuel Type: Diesel	

# PHOTOS







# CONTACTS

---

Andrey Shestakov, leading yacht broker of the sales department of Shestakov Yacht Sales Inc. Shestakov Yacht Sales Inc., the official representative of the Miami/Fort Lauderdale FL headquarters.

## Contact details

---

Email: **andrey@shestakovyachtsales.com**

Web: [shestakovyachtsales.com/en/](http://shestakovyachtsales.com/en/)

## Telephones

---

USA: **+1(954)274-4435**

## Office hours

---

Monday – Saturday: **9:00 - 21:00 EDT**

Sunday: **closed**

## Address

---



Harbour Towne Marina, 850 NE 3rd St,  
STE 213, Dania, FL 33004