

JUST AN ILLUSION — HATTERAS



Builder: HATTERAS

Year Built: 2003

Model: Sport Fisherman

Price: PRICE ON APPLICATION

Location: United States

LOA: 54' 0" (16.46m)

Beam: 17' 3" (5.26m)

Max Draft: 4' 2" (1.27m)

Cruise Speed: 31 Kts. (36 MPH)

Max Speed: 38 Kts. (44 MPH)

Our experienced yacht broker, Andrey Shestakov, will help you choose and buy a yacht that best suits your needs **JUST AN ILLUSION — HATTERAS** from our catalogue. Presently, at Shestakov Yacht Sales Inc., we have a wide variety of yachts available on our sale's list. We also work in close contact with all the big yacht manufacturers from all over the world.

If you would like to buy a yacht **JUST AN ILLUSION — HATTERAS** or would like help answering any questions concerning purchasing, selling or chartering a yacht, please call **+1(954)274-4435**

TABLE OF CONTENTS

TABLE OF CONTENTS	2
SPECIFICATIONS	5
Overview	5
Basic Information	5
Dimensions	5
Speed, Capacities and Weight	5
Accommodations	6
Hull and Deck Information	6
Engine Information	6
DETAILED INFORMATION	7
Overview	7
Salon	7
Galley	7
Master Stateroom	8
VIP Guest Stateroom	8
Guest Stateroom	9
Electronics & Navigation Equipment	9
Flybridge	9
Cockpit	10
Deck Equipment	10
Engine Room & Mechanical Equipment	11
Electrical Equipment	12
Hull & Construction	12
Exclusions	12
Disclaimer	12
PHOTOS	13
Cockpit Forward	13
Profile	13

Cockpit	13
Salon Forward	13
Salon Settee	13
Dinette	13
Galley	14
Galley	14
Galley	14
Master Stateroom	14
Master Head	15
Master Stateroom Forward	15
Guest Stateroom	15
Guest Stateroom Forward	15
Guest / Day Head	16
VIP Guest Stateroom	16
VIP Guest Stateroom Forward	16
Flybridge Aft	16
Helm	16
Helm	16
Flybridge Port Side Seating	17
Helm	17
Flybridge Forward Seating	17
Engine Room	17
Port Outboard	17
Port Engine	17
Starboard Outboard	18
Starboard Engine	18
General Arrangement	18
Performance	18
CONTACTS	19

Contact details	19
Telephones	19
Office hours	19
Address	19

SPECIFICATIONS

Overview

- Air Conditioned Flybridge with New EZ2CY Enclosure
- Low Hour Cat 1550 hp C-30's\, 30+ Knot Cruise
- Upgraded Electronics
- Equipped to Fish or Cruise

Basic Information

Category: Sport Fisherman

Sub Category: Convertible

Model Year: 2004

Year Built: 2003

Country: United States

Vessel Top: Hardtop

Fly Bridge: Yes

Cockpit: Yes

Dimensions

LOA: 54' 0" (16.46m)

LWL: 46' 0" (14.02m)

Beam: 17' 3" (5.26m)

Max Draft: 4' 2" (1.27m)

MFG Length: 54' 0" (16.46m)

Speed, Capacities and Weight

Cruise Speed: 31 Kts. (36 MPH)

Cruise Speed RPM: 1850 Kts.

Max Speed: 38 Kts. (44 MPH)

Max Speed RPM: 2300 Kts.

Displacement: 63347 Pounds

Water Capacity: 180 Gallons

Holding Tank: 91 Gallons

Fuel Capacity: 1250 Gallons

Accommodations

Total Cabins: 3

Total Berths: 4

Sleeps: 6

Total Heads: 2

Hull and Deck Information

Hull Material: Fiberglass

Deck Material: Fiberglass

Hull Configuration: Modified V-Hull

Hull Color: White

Hull Finish: Fiberglass

Hull Designer: Hatteras

Engine Information

Engines: 2

Manufacturer: Caterpillar

Model: C30

Engine Type: Inboard

Fuel Type: Diesel

DETAILED INFORMATION

Overview

JUST AN ILLUSION is a well maintained, extremely clean 54 Hatteras Convertible that spent her first five years exclusively in fresh water. Since then, she has been modestly fished and used primarily as a cruiser. Maintained to the highest standards, this 54 has received many upgrades, including **new Garmin 5215** touch screen plotter, **(4) new LED blue underwater lights**, **new EZ2CY** fly bridge enclosure, **new Handcraft custom mattress** in the master stateroom, **new flat screen TV** in the salon, and many more extras and custom items. The **air conditioned flybridge** features two Stidd helm chairs, bench seating port and forward and a well-equipped electronics package. Three spacious, well-appointed staterooms provide comfortable accommodations for six guests. Joinerwork throughout is done in high gloss American cherry wood.

Low hour 1550 HP CAT C-30s provide a comfortable cruise speed of 30+ knots and a top speed of 38 knots.

Salon

- L-shaped Ultra Leather sofa w/rod storage beneath
- Burlled maple & cherry block cocktail table w/compass rose inlaid removable top & interior storage
- U-Line ice maker
- Sharp Aquos 37" LCD TV
- DirecTV receiver
- Yamaha RX-V1300, 6 channel receiver
- Yamaha DV-C6480, 5 disc DVD/CD changer
- (5) Polk flush mount ceiling speakers
- Deep tinted safety glass windows
- Hunter Douglas Duette window shades
- Vinyl interior window covers
- Whisperwall paneled headliner & wallcoverings
- Fluted cherry wood valences
- Smoke detector
- Carpet runner, salon, (3) steps & companionway

Galley

- (2) Sub Zero 700BR under counter refrigerator drawers

- (2) Sub Zero 700BF under counter freezer drawers
- Sharp Carousel microwave/convection oven
- Kitchen Aid (4) burner ceran cooktop
- Granite countertops & backsplash
- Under-mount stainless steel sink
- Garbage disposal
- Amtico vinyl teak & holly sole
- (6) 36" wide storage drawers
- Overhead & under counter storage cabinets
- Electric water tank level gauge
- L-shaped dinette settee w/ storage beneath & rectangular granite top table

Master Stateroom

- Queen size berth w/custom Hand Craft mattress & cedar lined storage beneath
- Custom fitted bed spread, pillows & shams
- Built-in night stands w/(3) drawers each
- (2) table lamps w/shades
- Sharp Aquos 20" LCD TV
- Panasonic 6 disc DVD/CD changer
- Polk overhead stereo speakers
- Double cedar lined hanging locker w/auto light
- (3) cherry wood hull side storage cabinets
- Built-in dresser w/ (4) drawers & storage cabinet
- Full length mirror
- Smoke detector
- Aft bulkhead mirror
- En-suite head w/stall shower, granite top vanity, Headhunter toilet, medicine cabinet, linen locker, mirrored ceiling, exhaust fan

VIP Guest Stateroom

- Queen size berth w/cedar lined storage beneath
- Custom fitted bed spread, pillows & shams
- Built-in night stand counters, port & starboard
- Cedar lined hanging locker
- Overhead storage lockers, port & starboard
- Overhead hatch w/screen & shade
- Sharp Aquos 15" LCD TV
- Clarion DVD/CD receiver
- Polk overhead speakers
- Full length mirror

- Private access to forward guest/day head w/stall shower, Headhunter toilet, vanity w/mirror, medicine cabinet, exhaust fan
- Whirlpool "Thin Twin" stacked washer & dryer
- Linen locker

Guest Stateroom

- Twin berths w/storage beneath
- Custom fitted bed spreads w/pillows & shams
- Night stand w/(2) drawers
- Table lamp w/shade
- Aft mirrored bulkhead
- Double cedar lined hanging locker
- Whisperwall paneled headliner & wall coverings
- Sharp Aquos 15" LCD TV
- Smoke detector

Electronics & Navigation Equipment

- (2) Furuno day light display 15" LCD monitors
- Furuno FR2115BB 12kW, 120 nm black box color radar w/6.5' open array antenna
- Garmin GPSMAP 5212 multi-function display
- Raymarine E80 GPS chart plotter, multi function display
- Raymarine DSM300 digital sounder module w/1 kW transducer
- XM Sirius weather module
- Simrad AP22 autopilot
- (2) Icom IC M602 VHF transceivers w/hailer & (2) Shakespeare antennas
- Vetus joystick bow thruster control
- ACR RCL100 remote search light control
- (2) Caterpillar Marine Power Displays
- Engine synchronization control
- Clarion CMD 5 AM/FM/CD receiver w/Ipod connectivity
- Sturdy back-up engine controls
- Hatteras alarm system
- ACR EPIRB
- KVH Tracvision 4 Satellite TV system
- Ritchie compass w/dimmable light
- Electric fuel gauges

Flybridge

- (2) Stidd Admiral helm chairs w/ Luxury stainless steel/chrome package & covers
- Dedicated 24,000 BTU Cruisair reverse cycle air conditioning system
- (3) side EZ2CY enclosure w/aft roll-up Stratoglas enclosure
- Pipewelders custom hardtop
- Power actuated electronics console
- Fiberglass "Palm Beach" pod console w/custom stainless steel wheel & single lever controls
- Polished anodized welded aluminum rails & stanchions
- (6) rod rocket launcher
- Powder coated grab rails
- Top loading insulated drink box
- Cushioned bench seating, port & forward w/rod storage beneath

Cockpit

- 149 square foot molded fiberglass cockpit
- ISO standard scuppers in cockpit & cockpit hatches
- Polished anodized aluminum ladder to flybridge w/acrylic steps
- Tansom door
- Raw water & fresh water wash down outlets w/Hatteras quick disconnects
- Dockside water connection w/Hatteras quick disconnect
- Bait & tackle station w/sink, cutting board & tackle storage drawers
- 80" removable fish box w/macerator, flush in deck
- 40 gallon livewell, in deck
- Refrigerated step box
- Bait freezer
- Raymarine camera
- Step box w/storage
- Release Marine 4 rod rocket launcher on stainless steel pedestal
- Varnished teak table w/inlaid compass rose
- (4) Pompanette stainless steel flush mount rod holders
- Gaff storage
- Stamoid snow white full cockpit cover (2015)
- Cockpit courtesy lighting
- Glendinning Cablemaster w/75' cord
- Telephone CATV inlet
- Stereo speakers w/volume control
- Hatch & lockable door to engine room

Deck Equipment

- Fiberglass bow pulpit w/polished stainless steel anchor chute & roller

- Fortress FX55, 32 lb aluminum anchor
- Maxwell electric vertical windlass
- Polished stainless steel anchor cleat
- Polished anodized aluminum welded bow rail
- (2) stainless steel bow cleats w/chocks & chafing strips
- (4) polished stainless steel spring line cleats w/chafing strips
- (2) stainless steel stern cleats & hawse pipes
- Pipewelders 38' triple spreader outriggers
- Powder coated grab rails on cabin sides
- Dual electric air horns
- International navigation lights
- ACR RCL100 remote search light

Engine Room & Mechanical Equipment

- Twin Caterpillar C30, 1550 SAE hp diesel engines w/1380 hrs.
- ZF 2150A transmissions w/2.92:1 reduction ratios & trolling valves
- Hynautic hydraulic steering w/power assist
- Sturdy electronic engine controls
- Dual Racor 1000 fuel filters each engine
- Racor 500 fuel filter for generator
- Dripless shaft & rudder seals
- 39" x 75", 7 blade nibral propellers
- 3" Aquamet 22 stainless steel shafts
- Hydraulic trim tabs
- Reverso oil exchange system
- Reverso fuel priming pump
- (2) fuel transfer pumps
- FM200 fire suppression system w/automatic & remote manual pulls
- Jabsco Par Max 7.0, 24V DC fresh water pump w/expansion tank (2015)
- Headhunter Mach 5 AC fresh water pump (new accumulator tank, 2015)
- Reverse Osmosis of South Florida, water purification system
- Hot water heater
- Cruisair air conditioning system, 4 compressors, 67,000 BTU total (Salon:24k, VIP & Guest: 12k, Master: 7k, Flybridge: 24k)
- (2) air conditioning pumps
- Headhunter Royal Flush sanitation system
- Sewage holding tank w/24V pump, plumbed for dockside pump out
- 24V Exhaust blower fans
- Forced air induction system for engine combustion
- Automatic 24V bilge & sump pumps

Electrical Equipment

- 17 kW Onan generator w/1850 hrs.
- 12V/24V DC electrical system
- 120V/240V AC electrical system
- (2) 24V banks 8D Lifeline AGM batteries
- Mastervolt 40 amp 24V automatic battery charger (2015)
- (2) 4D Lifeline AGM batteries for 24V bow thruster (2015)
- Bow thruster bank battery charger
- Battery parallel switch
- (2) 50 amp 125/250V shore power lines, cockpit Glendinning retrieval system & port side bow pulpit
- (2) Jefferson Electric isolation transformers
- Central bonding system
- AC & DC distribution panels, salon & engine room
- Recessed LED overhead lighting throughout

Hull & Construction

The Hatteras 54 Convertible is designed specifically to deliver a smooth ride and excellent handling while operating at high speed. The convexity in the hull bottom helps make this hull immensely strong. The slight outward curvature (viewed from keel to chine) reduces impact accelerations and contributes to an incredibly smooth head-sea ride. Two tooled in spray rails per side cut down on the spray usually associated with a heavy boat. Deadrise varies from 20 degrees at amidships to about 2 degrees at the transom. Prop tunnels reduce shaft angle and draft. The bottom is solid fiberglass with no coring while hull sides, decks and the superstructure use Nonabsorbent Divinycell PVC foam coring. The engine beds are mounted to steel plates fully encapsulated in fiberglass stringers.

The exterior is finished with Awlcraft 2000 polyurethane paint.

Exclusions

Owner's personal belongings.

Disclaimer

The Company offers the details of this vessel or yacht in good faith but cannot guarantee or warrant the accuracy of this information nor warrant the condition of the vessel. A buyer should instruct his representatives, agents, or his surveyors, to investigate such details as the buyer desires validated. This vessel or yacht is offered subject to prior sale, price change, or withdrawal without notice.

PHOTOS

Profile



Cockpit Forward



Cockpit



Salon Forward



Salon Settee



Dinette



Galley



Galley



Galley



Master Stateroom



Master Stateroom Forward



Master Head



Guest Stateroom



Guest Stateroom Forward



Guest / Day Head



VIP Guest Stateroom



VIP Guest Stateroom Forward



Flybridge Aft



Helm



Helm



Helm



Flybridge Port Side Seating



Flybridge Forward Seating



Engine Room



Port Outboard



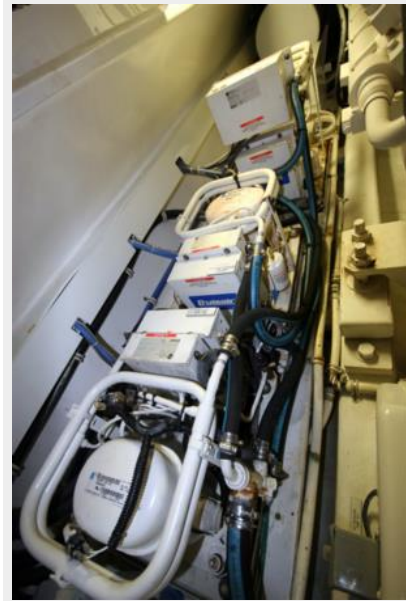
Port Engine



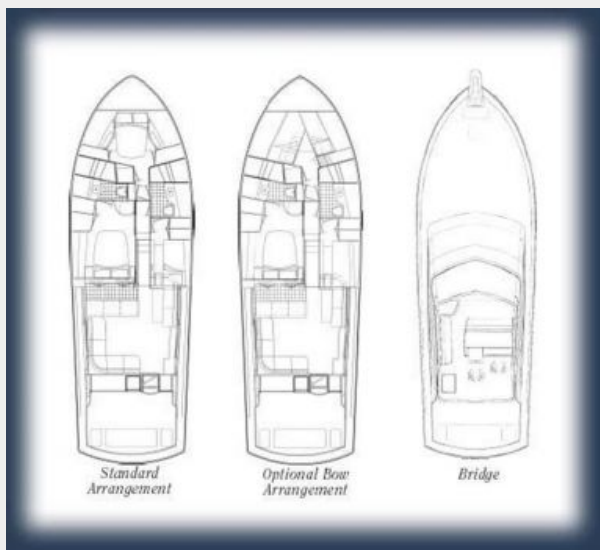
Starboard Engine



Starboard Outboard



General Arrangement



Performance

pmv tested: Hatteras 54 Convertible

HP	WPM (knots)	WPM (mph)	WPM (km/h)	WPM (miles)	WPM (nautical)	WPM (kilometers)
750	11.5 (13.0)	12	8.94 (10.0)	1,078	938	78
1000	12.6 (14.5)	13	9.43 (10.7)	1,144	1,000	81
1350	13.5 (15.7)	14	9.92 (11.3)	1,210	1,066	92
1700	14.4 (16.7)	15	10.41 (11.9)	1,276	1,132	99
2050	15.3 (17.8)	16	10.90 (12.5)	1,342	1,198	107
2400	16.2 (18.9)	17	11.39 (13.0)	1,408	1,264	115
2750	17.1 (20.0)	18	11.88 (13.6)	1,474	1,330	123
3100	18.0 (21.1)	19	12.37 (14.2)	1,540	1,396	131
3450	18.9 (22.2)	20	12.86 (14.8)	1,606	1,462	139
3800	19.8 (23.3)	21	13.35 (15.4)	1,672	1,528	147
4150	20.7 (24.4)	22	13.84 (16.0)	1,738	1,594	155
4500	21.6 (25.5)	23	14.33 (16.6)	1,804	1,660	163
4850	22.5 (26.6)	24	14.82 (17.2)	1,870	1,726	171
5200	23.4 (27.7)	25	15.31 (17.8)	1,936	1,792	179

Conditions: Temperature 80°; Humidity 10%; Wind 10 mph; Sea: calm; Fuel: 1.00 gal./hr.; 100 gal. tank; 8 persons; 100 lbs. gear. Speeds are two-way averages measured in 1/4-mile or mile runs. RPM measured with Corbin Electronic Fuel Monitoring System. Range 10% of observed fuel capacity. Speeds measured on 6 runs, 81-88 in the best of several consecutive. All measurements taken with two side-balls deployed.

Specifications:
 Length overall: 54'7"
 Waterline length: 46'7"
 Beam: 17'7"
 Draft: 4'7"
 Weight dry: 43,240 lbs.
 Fuel capacity: 2,230 gal.
 Max. capacity: 100 gal.
 Fuel engines: 2 x 1,700hp C20 Caterpillar diesel engines
 Transmission: Volvo Penta 27130A/75121
 Prop: 21x27, 21 Blade Volvo
 Steering: Volvo hydraulic
 Gearbox: Volvo engine-driven
Optional equipment: see boat book - original catalog
 Acc. gear-mounted VHF/DSC radio, 4 Phosphor bronze wing board and ladder, Murray Brothers lighting deck, full equipment case
 Price as tested: \$1,930,750

Reprinted with permission from the March 2003 issue of Power & Motoryacht © Copyright 2003, PRIMEA INC. All rights reserved. For more information about captions from Power & Motoryacht, contact Wright's Reports at 817-682-0266

CONTACTS

Andrey Shestakov, leading yacht broker of the sales department of Shestakov Yacht Sales Inc. Shestakov Yacht Sales Inc., the official representative of the Miami/Fort Lauderdale FL headquarters.

Contact details

Email: andrey@shestakovyachtsales.com

Web: shestakovyachtsales.com/en/

Telephones

USA: +1(954)274-4435

Office hours

Monday – Saturday: **9:00 - 21:00** EDT

Sunday: **closed**

Address



Harbour Towne Marina, 850 NE 3rd St,
STE 213, Dania, FL 33004