

NEW 92 VIKING ENCLOSED BRIDGE (VK92-103) — VIKING



Судостроитель: VIKING

Год постройки: 2016

Модель: Катер для спортивной рыбалки

Цена: ЦЕНА ЯХТЫ ПО ЗАПРОСУ

Местонахождение: United States

Длина общая: 92' 0" (28.04m)

Ширина: 24' 1" (7.34m)

Макс. осадка: 5' 11" (1.80m)

Купить **NEW 92 Viking Enclosed Bridge (VK92-103) — VIKING** а также выбрать подходящую вам яхту из нашего каталога яхт вам поможет опытный яхтенный брокер Андрей Шестаков. На сегодняшний день компания **Shestakov Yacht Sales Inc.** имеет большое количество яхт в собственном списке продаж, а также тесно сотрудничает со всеми крупными яхтенными производителями по всему миру.

Для того чтобы купить яхту **NEW 92 Viking Enclosed Bridge (VK92-103) — VIKING** а также проконсультироваться по любому вопросу связанному с покупкой, продажей, чартером яхт позвоните по телефону **+7(918)465-66-44**.

ОГЛАВЛЕНИЕ

ОГЛАВЛЕНИЕ	2
ХАРАКТЕРИСТИКИ	5
Обзор	5
Основная информация	5
Размеры	6
Скорость, вместимость и масса	6
Размещение	6
Корпус и палуба	6
Информация о двигателе	6
ПОДРОБНОЕ ОПИСАНИЕ	7
Overview	7
Decor	7
Salon	8
Galley	9
Day Head	9
Companionway	10
Master Stateroom	10
Master Stateroom Head	11
Forward Stateroom	11
Forward Stateroom Head	12
Port Stateroom	12
Port Head	12
Starboard Stateroom	12
Starboard Head	13
Captain's Stateroom/Head	13
Crew Stateroom	14
Crew Head	14
Enclosed Flybridge	14

Skybridge	16
Cockpit and Mezzanine	16
Aft Deck	17
Deck/Ext	18
Hull	18
Engine Room & Mechanical	18
Electrical Equipment	20
Atlantic Marine Electronics Package	20
Palm Beach Tower	24
Construction	24
Исключения	25
Отказ от ответственности	25
ФОТОГРАФИИ	26
Salon	26
Salon	26
Salon	26
Dinette	26
Galley	26
Galley	26
Galley	27
Salon/Galley	27
Master Stateroom	27
Master Stateroom	27
Master Stateroom	27
Master Stateroom	28
Master Head	28
Forward Stateroom	28
Forward Stateroom	28
Starboard Stateroom	28

Captain's Stateroom	29
Port Stateroom	29
Crew Quarters	30
Crew Quarters	30
Crew Head	30
Crew Laundry	30
Helm	31
Enclosed Bridge	31
Enclosed Bridge	31
Aft Bridge Seating	31
Aft Helm Station	32
Skybridge Helm	32
Skybridge Seating	32
Skybridge Seating	32
Skybridge Seating	32
Upper Mezzanine	32
Upper Mezzanine	33
Cockpit	33
Fighting Chair	33
Cockpit	33
Engine Room	33
Engine Room	33
Engine Room	34
Engine Room	34
КОНТАКТЫ	35
Контактная информация	35
Телефоны	35
Время работы	35
Адрес	35

ХАРАКТЕРИСТИКИ

Обзор

This 92 Viking enclosed bridge specifications were created by Team Galati with numerous well thought out options compiled from several demo Vikings over many years to create the ultimate sportfishing machine. She is also the first 92 to feature the new MTU joystick with dynamic positioning. The skybridge on the 92 offers an amazing sight line to the cockpit while fishing. With a retail price of \$10,990,477 she is equipped with everything you could imagine. VK92-103 is a new boat with full factory warranties. Call today to learn more about this amazing opportunity to own a turn key 92 Viking without the wait of a build!

The Viking 92 Convertible has a stunning profile with several motor yacht cues including dual mezzanine decks; one in the cockpit and the second on the main level after deck. The latter mezzanine offers both rear facing lounge seating, along with a second seating area and a table for al fresco dining. An outside galley and grilling area are included for added convenience and ambiance.

The yacht's interior is a showpiece of elegance and luxury. The 23-foot beam not only opens the salon but transforms it into a majestic living room with built-in furniture and plush appointments like a 60-inch flat screen television that rises on a lift out of the teak cabinetry. An L-shape island in the galley complements the work area. A pair of walk-in pantries and a full day head are forward and characterize an excellent use of space. Nearby, a formal dining area accommodates eight guests.

The 92 Convertible has five staterooms, each with its own private head and shower and crew quarters are aft with access from the cockpit. The full beam master suite features a king size walk around bed, a walk-in closet, a dressing table, and his and her private facilities. The full beam area includes a head with a shower, a small galley area, and upper and lower berths in a private cabin.

The communication, navigation and entertainment electronic package was designed and installed with a state of the art Atlantic Marine Electronics package.

Основная информация

Тип судна: Катер для спортивной рыбалки

Подкатегория: Convertible

Модельный год: 2016

Год постройки: 2016

Страна: United States

Размеры

Длина общая: 92' 0" (28.04m)

Длина по ватерлинии: 81' 10" (24.94m)

Ширина: 24' 1" (7.34m)

Макс. осадка: 5' 11" (1.80m)

Скорость, вместимость и масса

Водоизмещение: 205000 Pounds

Вместимость воды: 485 Gallons

Вместимость сточного бака: 330 Gallons **Объем топливного бака:** 4000 Gallons

Размещение

Всего кают: 5

Каюты экипажа: 1

Корпус и палуба

Материал корпуса: Fiberglass

Информация о двигателе

Производитель: MTU

Модель: 2000V16 M96L

Тип топлива: Diesel

ПОДРОБНОЕ ОПИСАНИЕ

Overview

This 92 Viking enclosed bridge specifications were created by Team Galati with numerous well thought out options compiled from several demo Vikings over many years to create the ultimate sportfishing machine. She is also the first 92 to feature the new MTU joystick with dynamic positioning. The skybridge on the 92 offers an amazing sight line to the cockpit while fishing. With a retail price of \$10,866,967 she is equipped with everything you could imagine. VK92-103 is a new boat with full factory warranties. Call today to learn more about this amazing opportunity to own a turn key 92 Viking without the wait of a build!

The Viking 92 Convertible has a stunning profile with several motor yacht cues including dual mezzanine decks; one in the cockpit and the second on the main level after deck. The latter mezzanine offers both rear facing lounge seating, along with a second seating area and a table for al fresco dining. An outside galley and grilling area are included for added convenience and ambiance.

The yacht's interior is a showpiece of elegance and luxury. The 23-foot beam not only opens the salon but transforms it into a majestic living room with built-in furniture and plush appointments like a 60-inch flat screen television that rises on a lift out of the teak cabinetry. An L-shape island in the galley complements the work area. A pair of walk-in pantries and a full day head are forward and characterize an excellent use of space. Nearby, a formal dining area accommodates eight guests.

The 92 Convertible has five staterooms, each with its own private head and shower and crew quarters are aft with access from the cockpit. The full beam master suite features a king size walk around bed, a walk-in closet, a dressing table, and his and her private facilities. The full beam area includes a head with a shower, a small galley area, and upper and lower berths in a private cabin.

The communication, navigation and entertainment electronic package was designed and installed with a state of the art Atlantic Marine Electronics package.

Decor

- Prestige decor
- Galley accessories with service for 8
- Accessory décor kit
- Sofa, upgraded style picture frame topstitching to all seats and backs and nail heads to sofa arms and base
- Custom wallpaper material
- Custom wallpaper installation

- Custom headliner material throughout boat majilite, finesse legend pearl eggshell
- Carpet throughout fabrica radiance brilliant
- Mezzanine seating: aft bridge bench seating:(off of enclosed bridge): in (ultraleather) brisa distressed outdoor-buckskin- channel quilted sunbrella sailcloth-sahara
- Sconces, reading lights throughout
- Double carpet padding throughout
- Satin finish throughout
- Walnut interior wood
- Designer bedspreads and shams for all beds
- Designer fabrics
- Fabrica carpet, nylon fibers with Scotchgard protection and stain release
- Headliner, Majilite, Baby Ostrich, upgraded throughout
- Throw pillows throughout including designer cords and fringes
- Towel bars and ring - satin nickel
- Ultraleather sofas in salon and master stateroom and dinette
- Upgraded window panel fabric and trim
- Viking Prestige Décor package

Salon

- Carpet runner for salon
- Wood face forward above dinette seats
- Large U-shaped salon sofa with storage underneath
- Dinette with 3 decorator supplied chairs
- Bar stools with backs and wood pedestals
- Pantry: flooring: custom amtico
- Countertop la dolce vita, leather finish
- Salon bar: top la dolce vita, leather finish
- Storage ottoman; in Ultraleather brisa-bark
- (2) Recliners
- Air conditioning with reverse cycle heat that circulates from concealed registers behind the valances to maximize comfort while minimizing noise and drafts –individual temperature control
- Blinds for desired natural lighting and additional privacy
- Cocktail tables, wood inlay, high gloss finish, hi-lo
- Doors, salon, electric sliding - molded fiberglass with frameless window and interior
- Flooring, custom Amtico at salon entrance and wall- to-wall carpeting with lead lined double padding for sound absorption
- Home theater center with 65" flat screen TV on a raise and lower mechanism with antenna or cable hook-up, and Bose system with custom surround sound
- Indirect decorative rope lighting behind valances, 24V/120V
- Lambrequins, fabric upholstered-inlaid in walnut frames
- Lighting, overhead LED lights recessed in headliner with dimmer switches

- Lounges, L-shaped (2), divided by storage cabinet and storage underneath
- Pillows, decorative throws for lounges
- Upholstery and window treatments
- Valances custom walnut
- Wet bar with sink and ice maker
- Windows, fixed, frameless side windows with tinted, tempered glass for style, natural lighting, and privacy

Galley

- Custom Amtico flooring in galley
- 110v outlet in room forward of galley
- Countertop la dolce vita, leather finish
- Conventional oven
- Electric range, 4-burner cook top, surface mounted
- Exhaust fan, high velocity
- Flooring, custom Amtico
- Garbage disposal in sink
- Lambrequins, fabric upholstered-inlaid in walnut frames
- Large wrap around galley with refrigeration and freezers, custom granite, level 1 countertop and bar stools with overhang for bar stool area
- LED lighting-backsplash
- Lighting, overhead lights recessed in headliner
- Microwave/convection oven located in upper galley cabinet
- Refrigerator and freezer, Sub-Zero, large capacity, deep-drawer under-counter style with walnut faces (4) refrigerator drawers, (2) freezer drawers
- Sink, stainless steel, single bowl under mounted in countertop with satin nickel galley faucet
- Storage cabinets in upper galley
- Storage cabinets and drawers in lower galley
- Table, dining, free standing with chairs, seating for up to 6 guests
- Touch screen control monitor with audible and visible alarms: fire, engine room temperature, high bilge water, high exhaust temperature, generator and tank monitors as well as confirming correct system operation
- Trash compactor lower galley

Day Head

- Air conditioning/heat with register in soffit
- Countertop, custom granite
- Exhaust fan with vent in soffit
- Flooring, custom Amtico

- Lights, overhead LED lights recessed in soffit and ceiling
- Lower vanity with walnut face
- Port side forward of dinette
- Sink with satin nickel faucet

Companionway

- Companionway, costa, canvas carpet runner w/ step covers
- Walls: top: majilite, finesse legend pearl eggshell; center: majilite, roseus-regatta sparkling sand; bottom: majilite, finesse legend pearl eggshell
- Access to pantry forward of galley
- Access hatches to forward bilge and machinery areas
- Access to day head forward of dining area
- Awlgrip bilge areas snow white and lighted for easier maintenance and cleaning
- Central vacuum unit connection with accessories
- Flooring, carpeted steps from galley through companionway
- Headliner, Majilite, natural color
- Laundry center with full size stackable washer and dryer behind door
- Lighting, overhead LED lights recessed in headliner with dimmer switches
- Staircase with banister for access to lower level and forward staterooms
- Utility closet
- Wall panels, natural style vinyl headliner individually installed with Velcro backing for easy maintenance

Master Stateroom

- Air conditioning with reverse cycle heat with temperature control
- Bed, king-size, walk-around fore and aft with Handcraft Viking Slumber #8 innerspring with pillow top mattress
- Bedspread – quilted, designer style with pillow shams (2)
- Closet, large, walk in with safe and mirror on inside wall
- Credenza forward of king-size bed with drawer storage
- Decorative indirect rope lighting from underneath bed platform and behind valances
- Drawer storage under bed, (2) large drawers
- End tables at port and starboard ends of bed with drawer and door storage
- Entertainment center, FM/DVD surround sound system with subwoofer
- Flooring, carpet with double pad
- Headboard, upholstered
- Lighting, overhead LED on lights recessed in headliner
- Lounge seat on port side with removable cushions for storage
- Starboard closet, walk in, maple-lined with walnut doors
- Port and starboard port lights

- Port and starboard side credenza with drawer storage
- Reading lights, overhead with separate switches
- TV, 65" flat screen
- Vanity/desk area with stool
- Locking door stops for door to head
- Costa, black out inserts for windows in master
- Dresser top, nightstand tops and panels above: cambria fairbourne

Master Stateroom Head

- His and her heads with separate entrance
- Mirror ceiling
- His/hers vanity tops and backsplash: cambria laneshaw with flat polished edge
- Cabinets: cambria fairbourne with flat polished edge
- Shower floor: border: cambria
- Shower walls: cambria
- (His and hers) flooring: cambria; upgrade
- Shampoo shelf and soap bar holder in shower
- Exhaust fans with vent in soffit
- Flooring, custom Amtico
- His and Her head and vanity areas with separate toilets, sinks and access from stateroom
- Large shower with glass enclosure and access from both port and starboard head areas with satin nickel hardware and molded fiberglass seat
- Linen storage
- Lower vanity
- Lighting, overhead LED lights recessed in soffit and in ceiling
- Medicine cabinets with mirrored doors
- Mirror around upper vanity insert
- Receptacle, 120V - GFCI
- Shower light
- Towel bar and ring – satin nickel

Forward Stateroom

- VIP centerlined queen
- Bedkeeper- (majilite) roseus regatta sparkling sand
- Handcraft Viking Slumber #6 innerspring and lift up top with gas pistons and cedar-lined storage underneath
- Bedspread – quilted, designer style with pillow shams (2)
- Decorative indirect rope lighting from underneath bed platform and behind valances
- Flooring, carpet
- Hanging locker, walnut, maple-lined

- Lighting, overhead LED lights recessed in headliner
- Private head with stall shower
- Reading lights with separate switches
- Stereo speakers recessed in soffit tied into salon stereo with remote control
- Storage drawers under bed, (2) large drawers
- TV, flat screen with DVD player
- Upper port and starboard storage lockers outboard
- Walnut shelf

Forward Stateroom Head

- Mirror ceiling
- Custom Amtico flooring
- Vanity top and backsplash: cambria halstead
- Additional border for flooring: custom Amtico

Port Stateroom

- Air conditioning/heat with temperature control
- Bed, side by side bunks with storage underneath, separated by night stand
- Nightstand top and back and bed keeper: wood
- Bedspread – quilted, designer style with pillow shams (2)
- Decorative indirect rope lighting from underneath bed platform and behind valances
- Flooring, double pad carpet
- Hanging locker, walnut, maple-lined
- Lighting, overhead LED lights recessed in headliner
- Mattress, Handcraft Viking Slumber #6 innerspring
- Private head with stall shower
- Reading lights with separate switches
- Stereo speakers recessed in headliner tied into salon stereo with remote control
- Storage drawers under bed, (2) large drawers
- TV, flat screen

Port Head

- Mirror ceiling
- Custom Amtico flooring
- Vanity top and backsplash: cambria halstead

Starboard Stateroom

- Bed, queen-size walk-around with Handcraft Viking Slumber #6 innerspring and lift up top with gas pistons and cedar-lined storage underneath
- Bedspread – quilted, designer style with pillow shams (2)
- Nightstand tops and backs: cambria fairbourne with flat polished edge
- Bedkeeper - (72) novasuede sable
- Sconces (2)
- Air conditioning/heat with temperature control
- Bedspread – quilted, designer style with pillow shams (2)
- Credenza with drawer storage forward
- Flat screen TV on forward bulkhead
- Flooring, carpet with double pad
- Hanging locker, maple-lined with bar for hanging clothes
- Lighting, overhead LED lights
- Private head with stall shower
- Stereo speakers recessed in headliner tied into salon stereo with remote control

Starboard Head

- Mirror ceiling
- Custom Amtico flooring
- Exhaust fan vent in shower
- Addition border for flooring: custom Amtico
- Forward vanity backsplash cambria fairbourne
- Outboard backsplash and vanity top cambria halstead

Captain's Stateroom/Head

- Air conditioning/heat with register in soffit
- Bed, full size athwartship with Handcraft Viking Slumber #6 innerspring and lift up top with gas pistons and cedar-lined storage underneath
- Bedspread - quilted, designer style with pillow shams (2)
- Countertop in head, custom granite
- Decorative indirect rope lighting from underneath bed platform and behind valances
- Flooring, carpet
- Hanging locker, walnut, maple-lined
- Lighting, overhead LED lights recessed in soffit and in ceiling
- Private head with stall shower
- Reading lights with separate switches
- Stereo speakers recessed in headliner tied into salon stereo with remote control
- Storage drawers under bed, (2) large drawers
- TV, flat screen
- Upper port and starboard storage lockers outboard

Crew Stateroom

- Upper and lower bunks to port
- Head to starboard
- W/D combo unit
- Microwave convection oven
- Refrigerator/freezer
- Common area: flooring: custom Amtico flooring
- Sleeping area only-Carpet: fabrica donegal
- Reading lights: audrey wall satin chrome 12v
- Common area: cambria bellingham
- Access via mezzanine and machinery room with weather tight swing door
- Air conditioning/heat with temperature control
- Bedspread-quilted, designer style with pillow shams (2)
- Engine room access door with window
- 3/4 Hanging locker, walnut, maple-lined
- Lighting, overhead LED lights recessed in headliner
- Main electrical panel with AC and DC selector breakers, monitoring and touch screen control
- Overhead escape hatch to aft deck lounge
- Reading lights with separate switches
- Storage drawers
- TV, flat screen with DVD player

Crew Head

- Custom Amtico flooring
- Exhaust fan vent in shower
- Vanity top and backsplash: cambria bellingham
- Sink, stall shower, and linen storage

Enclosed Flybridge

- Enclosed flybridge
- Window tinting
- Tri color lights in aft overhang
- Remote control panel for watermaker at helm
- TV, extend sofa forward
- Extend bench seat at overhang by 1' and make seat back as possible
- Air conditioning vents under aft station and also inside on inboard armrest of aft bridge seat
- Molded-in quartz lights in flybridge overhang
- Custom Amtico flooring

- Stair landing: flooring: custom Amtico flooring
- Faux paint inside of enclosed bridge door, walnut
- 12V stereo with CD/DVD player
- Additional 6 ton chiller unit provided with Enclosed Bridge
- Aft control station - console style with full engine controls, radio box for switches and recessed electronics. Custom pod with single lever controls and stainless steel steering wheel
- Aft facing jump seat for observation of cockpit
- Air conditioning aft bridge deck
- Air conditioning with reverse cycle heat, temperature control and dehumidification mode
- Cabinetry and furniture manufactured of walnut hardwood and veneers with furniture finish
- Central vacuum unit connection with hose fittings
- Cocktail table – walnut, fixed pedestal mounted
- Companion seats, Stidd, port and starboard jump seats with footrests and storage underneath seats
- Defoggers
- Door, exterior, weatherproof and lockable
- Flooring, carpet
- Forward control station with all necessary control switches, lighted instruments and engine controls
- Hatch above helm chair
- Hatch in overhang with powder-coated ladder and access to hardtop
- Headliner, baby ostrich, gelato
- Helm chair, Stidd, black, ultra-leather, adjustable with footrest
- Large under helm area for easy access and added storage
- Lounge, L-shaped with storage underneath
- Overhead recessed LED lighting
- Powder-coated aluminum aft railing and flybridge ladder
- Quartz lights, molded-into aft overhang
- Raised, wrap-around helm console with black ultra-leather surfaces and visor to reduce glare and access to all electronics components
- Seating on starboard side
- Staircase, interior from salon
- Steering wheel, top mounted, stainless steel
- Touch screen control monitor with audible and visible alarms: fire, engine room temperature, high bilge water, high exhaust temperature, high coolant temperature, low oil pressure, generator and tank monitors as well as confirming correct system operation
- TV, flat screen on lift mechanism
- Upholstered overhead wiper box with switches mounted centerline
- Upholstered valances, baby ostrich headliner
- Windshield, laminated, curved, safety glass
- Windshield wipers, electric with intermittent controls, washers
- Windows, fixed side and aft, custom tint

Skybridge

- Release Marine Trillion helm chair
- Single lever controls with bow thruster buttons in levers
- Refrigerated drink box
- Palm Beach Tower hardtop
- Hydraulic outriggers
- Joystick helm for MTU dynamic positioning system
- Release teak helm pod
- Speakers wired to stereo in enclosed bridge
- Costa, bolstered style cushions for bench seats
- Dodger shield in front of helm
- Freshwater washdown
- 10 amp breaker on ac bridge panel for Palm Beach Tower supplied 120v

Cockpit and Mezzanine

- Cruisair "cool breeze" mezzanine air system
- Plumb transom box as live well without window and light
- Livewell in stbd side mezzanine box
- Refrigerate mezzanine livewell box
- (2) Additional rod holders
- (2) 24v outlets forward under coaming, one on each side (20 amp max)
- Cockpit freezer bait trays
- Release Marine Trillion fighting chair with DC lights
- Tri color rope lights under coaming
- Scuppers threaded for ondeck livewell drain
- Costa, cockpit fly
- Costa, cockpit sunshade with stainless poles
- Rod holders release marine boltless rod holders
- Rod holders swivel rod holders with backing plates for aft (2)
- 12v outlets for lp reels
- Ultraleather upgrade for aft deck / mezzanine cushions
- Teak cockpit sole, aft deck and mezzanine
- Starboard mezzanine box refrigerated
- Ice machine to discharge into starboard sole fishbox
- Air conditioning vents on sides and back of mezzanine seat
- Removable tuna tubes in transom fishbox
- Haunch and rails
- Mezzanine cushions 2" deeper and have lumber support, costa
- Mezzanine AC discharge vents in top of mezzanine armrests
- Access hatch to aft mechanical room, weather tight crew quarter door and engineroom
- Boarding box, fiberglass with nonskid, lift up top and storage

- Cable TV and telephone connections in cabinet under starboard forward gunwale and wired to a home run
 - RG6 TV cable to accommodate satellite system
 - Phone cable is two-pair to accommodate current data phone systems
- Cabinet with storage for gaffs and or other accessories under port and starboard gunwale
- Dockside electric connection – (2) 100 amp
- Dockside water connection with pressure reducing and valve to fill tank in cabinet under gunwale
- Drop-in in deck storage boxes (1) port and (1) starboard
- Freshwater wash down with hose bib located in cabinet in port and starboard side lockers
- Gaskets for all lids and access doors
- Glendinning Cablemasters in forward port and starboard cabinets under gunwales
- Indirect rope LED lighting underneath the coaming
- Lazarette hatch with access to steering, trim tabs, drain pumps
- Lower mezzanine storage - Large freezer (port), refrigerated under mount box for ice storage, insulated live well (stbd)
- Molded nonskid deck
- Molded fiberglass stairs port and starboard for access to mezzanine and upper lounge deck
- Observation mezzanine with centerline aft facing lounge seating with Sunbrella covered cushions, hinged seats with storage under lounge area
- Refrigerated drink box under mounted at top of stairs, port and starboard
- Reinforced recessed, stainless steel cleats and corner hawse pipes
- Rounded cockpit coaming for comfort
- Seawater wash down
- Self bailing cockpit with large scuppers
- Stainless steel gas springs on all hatches and lids
- Stereo speakers tied into salon stereo with remote control
- Tackle cabinets with pullout drawers port and starboard of bench seating
- Transom swim steps at transom door
- Transom mounted fishbox, plumbed for live well with drain
- Y-valve fresh and salt water wash down

Aft Deck

- Ladder to bridge powdercoated white stainless
- TV at aft deck overhang
- (2) Larger air conditioning vents above aft seating
- Grill
- Exterior aft salon deck bench seating: in (ultraleather brisa distressed outdoor-buckskin); with insert on back and seat, channel quilted-sunbrella sailcloth, sahara
- Release marine teak table with removable leaf and stainless pedestal

- Air conditioning supply in overhead
- Doors, salon, electric sliding - molded fiberglass with frameless window and teak interior
- Escape hatch for aft crew stateroom
- Extended flybridge overhang for shade
- Large lounge seating with removable cushions and storage underneath
- Lighting, recessed LED lights in flybridge overhang
- Removable cushions and storage below
- Stairs located port and starboard for access to mezzanine and cockpit

Deck/Ext

- Salon forward window black mask, (no warranty on cosmetic finish)
- All aluminum polished brushed
- Chafe guards outboard of cleats
- Sliding fender track from transom to forward spring cleat
- Faux painted teak transom and toe rail

Hull

- Additional fuel tank forward for a total of four tanks
- Custom hull color- gelcoat stars & stripes blue
- Bottom paint- Offshore (black)
- Seakeeper gyro 35000
- Performance package
- Custom non-metallic boot stripe

Engine Room & Mechanical

- MTU series 2000- V16 M96I 2635mhp
- (2) 1800 gpd watermakers with auto backflush
- (2) Generators 55kw
- Addl f/w pump for exterior Wash down with crossover valve for backup pump
- Headhunter fresh water pump
- Sonar tube
- Eskimo ice chipper (1000 lb per day) with discharge into cockpit sole
- Hydraulic system and bow thruster for MTU dynamic positioning system
- Scott pump in lazarette to feed tuna tubes
- Air conditioning – chilled water, 12 tons (two 6 ton units), zoned with reverse cycle heat for complete climate control throughout the interior and with individual temperature controls for staterooms and salon
- Air conditioning chiller system for aft crew quarter with chiller system, 2 tons make up pair

- Bilge pumps with clean out pumps linked into monitoring system and connected to float switches for automatic and manual operation
- Bow thruster hydraulic with controls in single lever handles on open flybridge or joy stick on enclosed flybridge
- Centralized seawater system w/ dual pumps
- “Delta T” engine room ventilation system with thermostatically controlled supply and discharge fans for proper fresh air circulation and water intrusion suppression
- “Delta T” pneumatically controlled engine room ventilation dampers, integrated into fire suppression system
- Dual stage variable speed 110V AC freshwater system with on deck freshwater fill and cockpit dockside supply inlet with pressure reducing valve
- Fire suppression system, automatically and manually operated and tied into main engine and generator ignition systems, aft mechanical compartment with override
- Freshwater supply in engine room for general maintenance and cleaning
- Fuel and oil lines, flexible, steel reinforced USCG approved, aircraft type
- Fuel priming pumps for main engines, electric
- Fuel transfer and management system, 220V AC pump w/24V DC backup pump controlled through control panels
- Fuel/water separator filters, Racor, for main engines and generator, “dual” filters for main engines, clear bowl type, top loading for convenient replacing - Awlgrip snow white
- Hour meters on main engines and generator
- Hydraulic bilge pump with manifold to forward, engine room, and cockpit bilges
- Internal sea strainers for generator
- Linear exhaust system with oval transom outlet
- Mufflers – generators, underwater gas/water separators
- Oil changing system, gear type pump for main engines, transmissions, and generator with pump out line run to cockpit locker
- PEX plumbing, freshwater system with manifold system to isolate individual areas
- Propellers, class “S” pitch tolerance (ISO 484/2 and dynamic balancing), advance design cambered blade sections for optimum performance. Nibral alloy for maximum durability
- Rudders, stainless steel, composite rudder bearing with dripless seal laminated into hull
- Seacocks, bronze, ball-type sea valves for all thru- hulls below the water line - Awlgrip white
- Shafts – 2 Aquamet high-strength stainless steel, double-taper with machined keyway and custom thrust plate at main engine couplings
- Struts – thru-water, Nibral with composite bearings
- Tides Marine water lubricated dripless shaft seals with crossover water supply from both engines
- Trim tabs, with center, port and starboard tabs recessed in transom, individual controls with fiberglass covers
- VIPER - (Viking Independent Programmable Electro- hydraulic Rudder) steering system with electronic interface for additional stations and future Auto Pilot
- Wash down pump 110V dedicated
- Water heater – (2) 40 gallons 208V, dual element for quick recovery

Electrical Equipment

- 24V DC ship's service throughout
- 240/120V Single phase AC power supply available throughout
- 110V outlet in engineroom on aft bulkhead
- Anchor light/navigation lights
- ASEA Power Systems Shore power converter capable of receiving 3 Phase, single phase 50Hz and 60Hz shore power connection to supply clean AC power throughout boat
- Batteries, (3) independent 24V and (1) 12V banks mounted in fiberglass storage boxes, maintenance free
- Battery chargers, (4) with thermal cutoff and switching system for complete integration
- Battery distribution panel with battery cutoff and charging system breakers
- Battery parallel system for main engines and generator start
- Bonded electrical system with ground plate
- Color-coded, labeled and numbered wiring system with corresponding drawings
- Dimmers, DC interior LED lighting throughout excluding the companionway
- Engine room lights, recessed AC and DC with switch at engine room entrance
- Generators, Diesel – (2) 55 kw Onan E-QD (electronic quiet diesel) Series, user-friendly with electronic governing allowing voltage and electronic frequency control (R)
- Glendinning cablemaster (2) with 3 wire grounded cord
- Individual switching for shore (1), shore (2) or generator supply located in aft crew stateroom
- Instrument panel lights for flybridge and main electric panel
- Lighting, overhead LED lights recessed in ceiling and rope style décor lights concealed by walnut valances, 24V DC
- Magnetic switches for bilge lights
- Master electrical control provided via Power Distribution System utilizing a Can Bus control for AC/DC remote breaker electrical systems. Complete system control and monitoring provided by 3 integrated touch screen controls - (1) located at galley/dinette (1) at flybridge and (1) main in crew area
- Receptacles, 120V duplex with GFCI throughout

Atlantic Marine Electronics Package

RADAR

- 1 FURUNO FAR2127BB/DC 25KW W/24RPM RADAR 20,125.00 GEARBOX SYSTEM WILL BE OUTPUT TO VIDEO MATRIX
- 1 RADAR ARRAY 8' FURUNO #XN24AF/8

RADAR2

- 1 GARMIN GMR24xHD 4KW HIGH DEF 24" DOME

PLOTTER

- 1 FURUNO NAVNET 3D MFDBB PROCESSOR 9,795.00 SYSTEM WILL BE OUTPUT TO VIDEO MATRIX SYSTEM SECONDARY KEYPAD CONNECTED ON SKYBRIDGE 2127 AVAILABLE AS RADAR SOURCE
- 2 KEPMGB-22" LCD GLASS BRIDGE DISPLAY 25,600.00 TFT MONITOR 1000NIT

PLOTTER 2

- 1 GARMIN GPSMAP8530 BLACK BOX SYSTEM PRELOADED CHARTS SYSTEM OUTPUT TO VIDEO MATRIX SYSTEM
- 1 KEPMGB-22" LCD GLASS BRIDGE DISPLAY TFT MONITOR 1000NIT

NAVIGATION PERIPHERALS

- 1 FURUNO NAVNET 3D HUB101
- 1 FURUNO FA50 12/24VDC AIS BLACK BOX PHANTOM SWITCH INCLUDED CONNECTED TO SHAKESPEARE 6018 ANTENNA LISTED IN VHF SECTION

SOUNDER

- 1 FURUNO FCV1200BB SOUNDER W/LANDSCAPE CONTROL SYSTEM OUTPUT TO VIDEO MATRIX SYSTEM
- 1 FURUNO CA28BL-6HR FRP 2kW 28KHZ TRANSDUCER
- 1 KEPMGB-22" LCD GLASS BRIDGE DISPLAY TFT MONITOR 1000NIT
- 1 SOUNDER INTERFACE UNIT FURUNO IF8000DS COMBINER BOX FOR DUAL STATION

SOUNDER 2

- 1 GARMIN GSD-26 CHIRP VIDEO SOUNDER MODULE
- 1 AIRMAR PM275LHW 1KW TRANSDUCER 42KHZ-65KHZ/150KHZ-250KHZ-WIDE BEAM

SONAR

- 1 SONAR FURUNO CH250BB/150/340 150KHZ SYSTEM OUTPUT TO VIDEO MATRIX SYSTEM
- 1 SONAR TUBE FURUNO F1918 CH300 1.8M
- 1 KEPMGB-22" LCD GLASS BRIDGE DISPLAY TFT MONITOR 1000NIT

AUTOPILOT

- 1 GARMIN GHP20 VIPER AUTOPILOT WITH GHC20

VHF

- 2 ICOM IC-M604 BLACK VHF RADIO TOTAL OF 3 RADIOS, 2 AT HELM, ONE ON

SKYBRIDGE

- 4 COMROD AV90/2BI 16' VHF ANTENNA

STEREO

- 1 JL AUDIO MHD600/4 24V AMPLIFIER ENCLOSED BRIDGE AND AFT DECK SPEAKERS

SATCOM

- 1 KVH TRACPHONE V7-IP RACK MOUNT ICM
- 1 PORT & STBD SATELLITE DOME POD 29"D X 7" POD 309 A & B

CAMERA

- 6 GOST PM-MINI IR BALL CAMERA
 - 3 FOR ENGINE ROOM (FWD FACING AFT)
 - 1 CAMERA FOR COCKPIT
 - 1 CAMERA FOR SALON
 - 1 CAMERA LOOKING FWD AT BOW

THERMAL IMAGING

- 1 FLIR M625L DUAL PAYLOAD THERM/LOW LIGHT VIEW FLIR AT HELM, SALON & MSR CONTROL WITH GARMIN
- 1 MINI-MAST: FLIR M-SERIES/ACR SPOTLIGHT

SPOTLIGHT

- 1 ACR RCL300A SPOTLIGHT

SAT TV

- 1 KVH TRACVISION TV6 IP TRI AMERICAS 24" TV ANTENNA SYSTEM DIRECT TV US AND LA IN PLACE OF HD7 DIRECTV US LIMITATIONS WITH TRACKING SINGLE SAT SELECTED CHANNEL AVAILABILITY
- 1 KVH MATCHING DOME KIT 72-0501-01 TV6 TO V7IP
- 2 DIRECTTV HR24 HD/DVR DSS RECEIVER SALON & MSTR
- 9 DIRECTTV LATIN AMERICA RECEIVER
- 3 KVH DIRECTV H25 HD DSS RECEIVER AFT DECK & STBD VIP STRM, ENC FLYBRIDGE

VIDEO DISTRIBUTION SYSTEM

- 1 CISCO SG-300-52P 52PORT POE SWITCH

- 6 JAP VBS-HDMI-408 2G POE POE TRANSMITTER FAR2127, NAVNET3D (2), GARMIN 8530, FCV1200, CH250
- 3 JAP VBS-HDMI-449A 2G+ 3-INPUT RACKMOUNT TRANSMITTER
 - #1 - FLIR VIS/IR, FLIR IR ONLY, ER CAMERAS
 - #2 - COCKPIT CAM, SALON CAM, FWD LOOKING CAM
 - #3 - DTV US H25 RECEIVER#1, DTV US H25 RECEIVER#2
- JAP VBS-HDMI-208POE 2G POE RECEIVER SALON, CREW, PORT AFT, SKYBRIDGE(3), AFT STA(2) HELM(5), ENC FB TV, MSR, FWD SR, STBD SR, PORT SR AFT DECK TV

SALON

- 1 URC DMS-AV RECEIVER
- 1 AMINA EVOLUTION INVISIBLE LOUDSPEAKERS AIW550EP PAIR W/HIGH PASS FILTER/LIMITER
- 1 CUSTOM AV RACK MAIN AV RACK TO BE IN STBD PANTRY. RACK TO FACE AFT & ALLOW CLEARANCE FOR PRINTER TO FIT ON TOP OF CABINET

SAFETY

- 1 GOST NAVTRACKER EVOLUTION 2.0

AFT STATION

- 2 MONITOR 17" LCD GLASS BRIDGE MARINE KEP

SKYBRIDGE

- 1 JL AUDIO MHD900/5-24V AMPLIFIER
- 1 GARMIN GPSMAP8212 - 12" TS MFD MOUNT IN DROP-DOWN BOX LARGER DROP BOX APPROVED BY CAPTAIN
- 3 KEP MGB-15 GLASS BRIDGE LCD 15" MONITOR
- 1 KEYPAD FURUNO NAVNET 3D BLACKBOX MCU-001 SKYBRIDGE
- 1 SOUNDER CONTROL LANDSCAPE FURUNO#CVI202 SKYBRIDGE

COCKPIT

- 2 JL AUDIO MHD600/4 24V AMPLIFIER COCKPIT
- 3 JL AUDIO M650-CCX-W STEREO SPEAKER COCKPIT

MISC

- 1 KEYLESS ENTRY SYSTEM, VIPER 211HV 1-WAY
- 1 EARTECH THREE USER WIRELESS MIC PACKAGE

UNDERWATER LIGHTS

- 1 LUMISHORE TIX801-CCP-FF-2 COLOR CHANGE TWO FF UWL LIGHTS W/ E.O.S CONTROLLER 2- DOWN
- 10 LUMISHORE TIX801-CCP-FF COLOR CHANGE SINGLE FF UNDERWATER LIGHT 4-TRANSOM,3-PORT,3 STBD

Palm Beach Tower

- Custom Molded Hardtop Top w/ polished pipe frame traditional style aft legs
- (6) Hardtop Lights, Lumitec tri-color w/ fiberglass recess (Not hooked up)
- Radar Pod Large Oval Style w/ sliding teaser reel door,
- Molded 3-in-1 Lumitec LED Spreader Lights
- Molded single LED spreader light forward
- Bridge Rail 3 Sided Double Aft with lower safety rail leg to leg
- L shaped rail around ladder opening
- (2) 51' Rupp Outriggers, "Bigg Riggs HD" 51" 4 Spreader Bridge Release
- Rupp hydraulic rigger system single action layout only with auto locking 120V
- Rupp Center Rigger
- (2) Recessed Teaser Reels Electric Miya EpochUS9 HD 24v
- Drop Down overhead electronics box in skybridge (Power actuated)
- Molded SAT Dome Mount
- S/S teaser line grommets underside of hardtop
- (2) Welded teaser line thru fittings welded to perimeter rails
- Costa Clear hard glass panel front of skybridge center helm
- Removable cockpit shade with custom s/s inserts fit in side of cabinets

Construction

- Ablative/Copolymer anti-fouling bottom paint (2 coats),using "Interlux Interprotected epoxy primer system"
- Aluminum mounting plate laminated into cockpit deck for fighting chair
- Awlgrip brass thru hulls and sea strainers
- Awlgrip engine room, lazarette, forward bilge and anchor locker for enhanced visibility and easier maintenance
- Blister resistant modified vinylester resin in entire hull skin
- Custom blended polyester resin used in structural laminates, topsides, bridges, and hardtops
- DuPont high gloss polyurethane bootstripe
- Fiberglass holding tank with dockside and overboard pumpout
- Fiberglass side thru-hulls
- Hatches, one (1) Bomar, foredeck hatches,with Ocean Air screen shade system

- High gloss walnut interior finish throughout
- High performance isophthalic gelcoat npg superior gloss, flexibility and outstanding weathering characteristics
- Hull interior—isophthalic gelcoat top-coated with a durable high gloss polyurethane coating
- Hull infused using Baltek end-grain balsa, Airex foam core with Aramid and E-Glass Hybrid fiberglass laminates
- Infused fiberglass fuel,water and holding tanks,with fiberglass baffles inside and balsa coring on sides for stiffness, sealed to hull with resin foam
- Molded fiberglass salon and galley floors with foam core for acoustical and thermal insulation
- Propeller pockets to reduce draft
- Stringers, fiberglass encapsulated foam
- Transducer location molded into hull
- Vacuum bagged composite structural bulkheads

Исключения

При продаже яхты исключаются личные вещи владельца.

Отказ от ответственности

Компания предоставляет описание судна или яхты добросовестно, но не может гарантировать точность этой информации, а также не ручается за техническое состояние. Покупатель должен проинструктировать своих агентов или оценщиков исследовать представленную информацию более подробно, по собственному желанию. Продажа судна или яхты, изменение цены или снятие с продажи будет происходить без предварительного уведомления.

ФОТОГРАФИИ

Salon



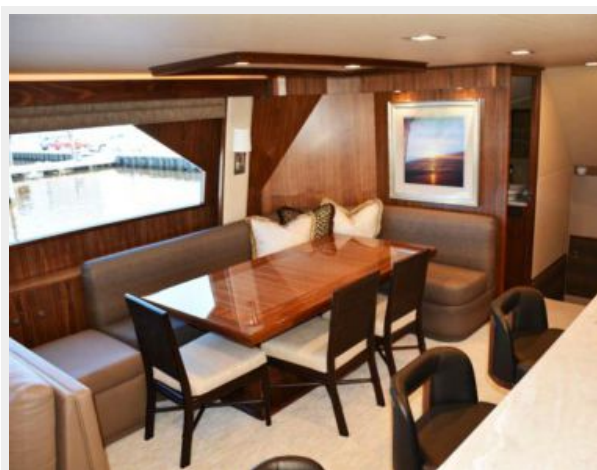
Salon



Salon



Dinette



Galley



Galley



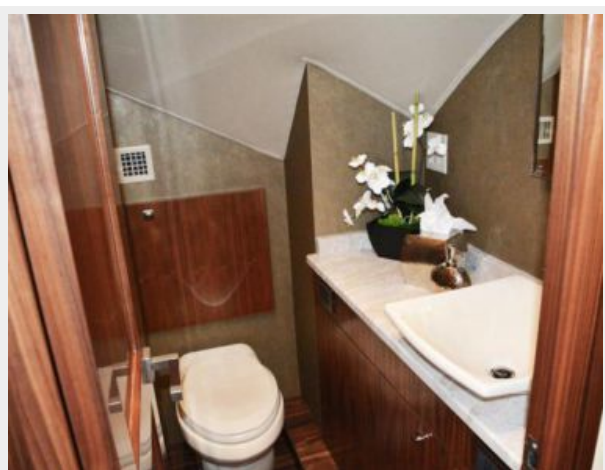
Galley



Salon/Galley



Master Stateroom



Master Stateroom



Master Stateroom



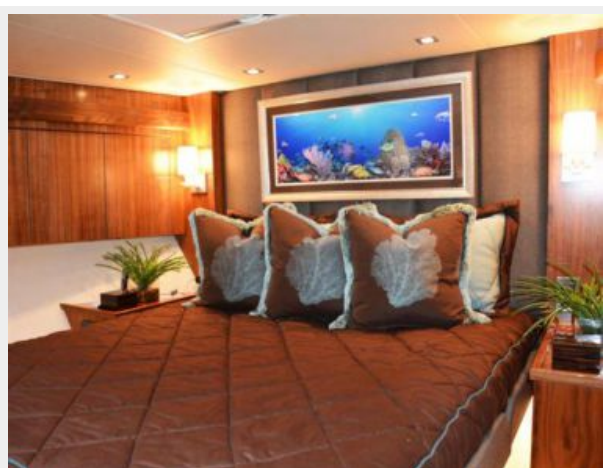
Master Stateroom



Master Head



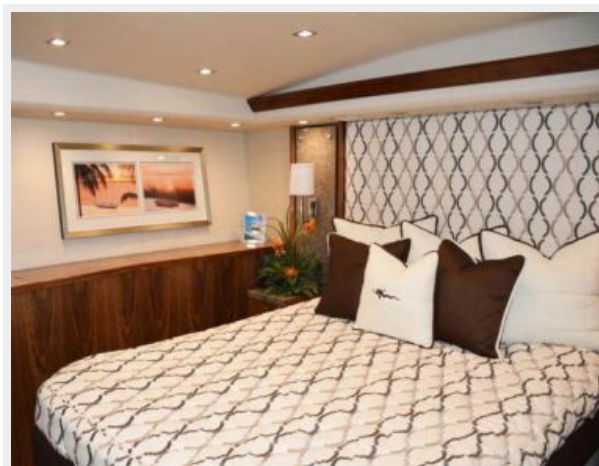
Forward Stateroom



Forward Stateroom



Starboard Stateroom





Captain's Stateroom



Port Stateroom



Crew Quarters



Crew Quarters



Crew Head



Crew Laundry





Helm



Enclosed Bridge



Enclosed Bridge



Aft Bridge Seating



Aft Helm Station



Skybridge Helm



Skybridge Seating



Skybridge Seating



Skybridge Seating



Upper Mezzanine



Upper Mezzanine



Cockpit



Fighting Chair



Cockpit



Engine Room



Engine Room



Engine Room



Engine Room



КОНТАКТЫ

Андрей Шестаков (Andrey Shestakov) – ведущий яхтенный брокер отдела продаж яхт и судов компании Shestakov Yacht Sales Inc. Официальный представитель Shestakov Yacht Sales Inc. для русскоговорящих клиентов в центральном офисе компании в Майами/Форт Лодердейл/Флорида/США.

Контактная информация

Email: andrey@shestakovyachtsales.com

Web: shestakovyachtsales.com

Телефоны

Краснодарский край: **+7(918)465-66-44**

США, Майами, Флорида: **+1(954)274-4435**

Время работы

Понедельник – Суббота: **9:00 - 21:00**
EDT

Воскресенье: **Закрето**

Адрес



Harbour Towne Marina, 850 NE 3rd St,
STE 213, Dania, FL 33004