

DESPERADO — BERTRAM



Builder: BERTRAM

Year Built: 1988

Model: Sport Fisherman

Price: PRICE ON APPLICATION

Location: United States

LOA: 37' 0" (11.28m)

Beam: 13' 3" (4.04m)

Cruise Speed: 24 Kts. (28 MPH)

Max Speed: 29 Kts. (33 MPH)

Our experienced yacht broker, Andrey Shestakov, will help you choose and buy a yacht that best suits your needs **Desperado — BERTRAM** from our catalogue. Presently, at Shestakov Yacht Sales Inc., we have a wide variety of yachts available on our sale's list. We also work in close contact with all the big yacht manufacturers from all over the world.

If you would like to buy a yacht **Desperado — BERTRAM** or would like help answering any questions concerning purchasing, selling or chartering a yacht, please call **+1(954)274-4435**

TABLE OF CONTENTS

TABLE OF CONTENTS	2
SPECIFICATIONS	3
Overview	3
Basic Information	3
Dimensions	3
Speed, Capacities and Weight	3
Accommodations	4
Hull and Deck Information	4
Engine Information	4
DETAILED INFORMATION	5
Notable Additions and Upgrades	5
General Features	6
Mechanical	6
Electrical Equipment	7
Accommodations	7
Cockpit	9
Fly Bridge	9
Exclusions	9
Disclaimer	9
PHOTOS	11
CONTACTS	22
Contact details	22
Telephones	22
Office hours	22
Address	22

SPECIFICATIONS

Overview

1988 37-foot Bertram Convertible powered by twin 6V92TA 450 HP Detroit Diesels with approximately 115 operating hours since major overhaul (SMOH). Desperado shows beautifully and is available because owner is ready to move up to a larger boat. Desperado has recently been compounded and waxed and looks terrific. Please read full specs for important upgrades and improvements.

Desperado has had only 2 owners and the current owner has enjoyed her for each of the past 15 years traveling the East Coast and to the Bahamas. Owner is eager to sell!

Basic Information

Category: Sport Fisherman

Model Year: 1988

Year Built: 1988

Country: United States

Fly Bridge: Yes

Dimensions

LOA: 37' 0" (11.28m)

Beam: 13' 3" (4.04m)

Clearance: 28' 0" (8.53m)

Speed, Capacities and Weight

Cruise Speed: 24 Kts. (28 MPH)

Max Speed: 29 Kts. (33 MPH)

Water Capacity: 100 Gallons

Holding Tank: 40 Gallons

Fuel Capacity: 498 Gallons

Accommodations

Total Cabins: 1

Hull and Deck Information

Hull Material: Fiberglass

Engine Information

Engines: 2

Manufacturer: Detroit Diesel

Model: 6V92TA

Engine Type: Inboard

Fuel Type: Diesel

DETAILED INFORMATION

Notable Additions and Upgrades

GENERAL

- Pipe Welders tower and Hard top
- 4-sided Flybridge Enclosure, 2013
- New Salon Air Conditioning Un in 2015
- Spare 3 Bladed Propellers
- New Aft canvas 2014
- New Bottom paint 1/15
- Emergency Life Raft
- Teak cockpit
- New raisers 8/15

SALON

- New Salon Sofa
- New Teak Table
- Sharp TV
- New headliner throughout vessel
- New Cabinet Doors
- New Carpet

GALLEY

- New Sub Zero Refrigerator/Freezer, 2010
- Frigidaire Microwave

MECHANICAL

Both Engines Majored by Detroit Diesel Representative, 2009 in Fort Lauderdale, FL

Major Overhaul Included:

- New Cylinder Kits
- Heads
- New Fuel Injectors
- High Pressure Hoses Replaced with New
- Turbocharger Serviced
- After Coolers Serviced

- Engine Room Detailed

General Features

- Air conditioning, reverse cycle (3rd unit in Salon)
- Air Horn, 12V
- Alarm system, fire, bilge, oil pressure, engine temp, gear oil temp, exhaust cooling
- Anchor Chocks and deck pipe hinged to anchor locker
- Anchor Line
- Bow Pulpit with Rail
- Bow Rail, aluminum with burgee staff
- Chocks, Stern
- Cleats, 8
- Combination bow chock and navigation light
- Dock Lines
- Ensign Pole and Socket
- Fire Extinguishers
- Fog Bell
- Generator
- Life Jackets
- Navigation Lights, international
- Ring Buoy
- Thermal and Acoustical insulation
- Windows, Tinted-Tempered Glass

Mechanical

- Ball seacocks on all thru-hull fittings
- Bilge pumps (4), automatic
- Dual lever engine controls
- Engine air breather collectors
- Engine Compartment blowers (3)
- Flush Mounted Strut and Rudder ports
- Fresh water cooling, main engines and diesel generator
- Fuel filters/water separators
- Fuel shut-off valves
- Halon fire extinguisher system, dual- (1) auto/ manual, (1) manual only
- Hot water heater, 120V AC, 20 gallons
- Hydraulic steering
- Manganese bronze underwater hardware
- Mufflers, fiberglass
- Propeller shafts, s.s.

- Raw water sea strainers
- Smoke detector
- Transom zincs
- Trim tabs, flush mount, electro hydraulic
- Vibration mounts, all engines
- Water box for transducer installation
- Water inlet, dockside supply
- Water pressure system, electric

Electrical Equipment

- Batteries, (4) diesel, w /paralleling device
- 120V AC 50 amp shore service Inlet and 50' shore cord, P&S
- Converter, automatic, 40 amp
- Copper ground screen
- Engine room DC lighting
- Electrical bonding system
- Electronics power panel, Flybridge 12V, 60 amp, 10 circuit
- Shoreline galvanic isolator

Accommodations

- Carpeting throughout
- Fiberglass soles throughout
- Foam-backed vinyl covered bulkheads w /oak trim
- Micro blinds

Deckhouse:

- AC & DC lighting, AC outlets (2)
- Aft bulkhead w/ hinged door
- Cocktail table w/ benches
- Convertible lounge, L-shaped
- Electrical distribution panel
- Headliner, foam-backed suede
- Rod locker in overhead
- Screens on side windows
- Stereo, AM/FM cassette w/speakers
- TV

Galley:

- Cooktop, 2 burner
- AC outlet (1), GFI
- Dish locker
- Freezer, AC, under counter
- Microwave oven
- Refrigerator, AC, under counter
- Single-lever hot and cold faucet
- Sink, Stainless Steel

Guest Stateroom:

- Berths, upper& lower, w/ coverlets and shams
- DC lighting
- Entrance from companionway w/ sliding door
- Hanging locker, cedar lined
- Overhead suede

Head:

- China sink w/ single-lever faucet
- Circulating fan
- DC lighting, AC outlet, GFI
- Shower stall w/ folding door and seat.
- Automatic Sump pump
- Toilet, Galley Maid
- Vanity w /locker storage under sink and mirrored cabinet

Owner's Stateroom:

- DC lighting, AC outlet
- Double berth w/ coverlets and shams
- Drawer storage under berth
- Hanging locker, cedar lined
- Padded suede hullsides w/shelves
- Rope locker
- Stereo w/ speakers
- TV
- Vanity w/ mirror
- Ventilating hatch and skylight, w/ screen

Cockpit

- Coaming padding
- Cockpit boarding lights, D/C
- Cockpit sole, Teak w/ dogged hatches
- Cockpit step box, portable
- Overhead lighting, D/C
- Cockpit Prep Center with Sink
- Reinforcement for fighting chair
- Scuppers thru hullside
- Stowage lockers, P & S w /hinged doors
- Teak step pads, covering board
- Transom door and gate
- Transom step
- Cockpit Freezer
- Blue water full sizes teak fighting chair

Fly Bridge

- Compass, 5"
- Electronics and/or storage lockers(2)
- Full instrument console w/ weather-protected gauges and switches
- Blue water teak Helm and companion seats
- Hinged Plexiglas cover on chart flat
- Padded coaming
- Rail and ladder, aluminum
- Seating for four
- Stereo speakers w /volume control
- Tinted Plexiglas spray shield

Exclusions

Owner's personal belongings.

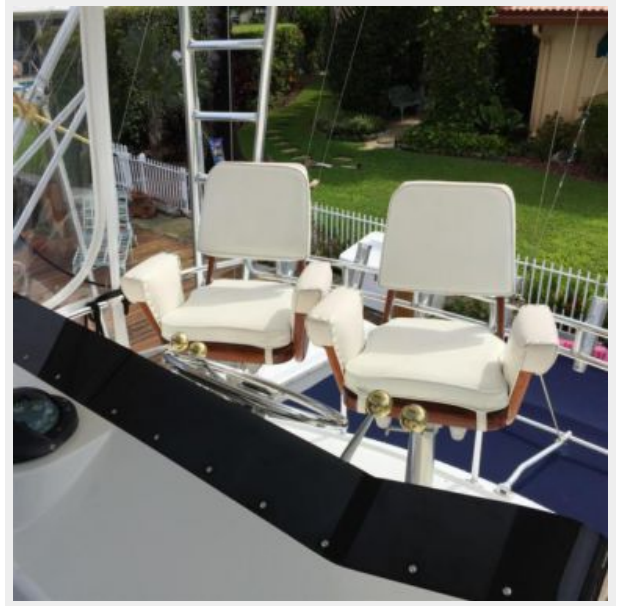
Disclaimer

The Company offers the details of this vessel or yacht in good faith but cannot guarantee or warrant the accuracy of this information nor warrant the condition of the vessel. A buyer should instruct his representatives, agents, or his surveyors, to investigate such details as the buyer desires validated. This vessel or yacht is offered subject to prior sale, price change, or withdrawal

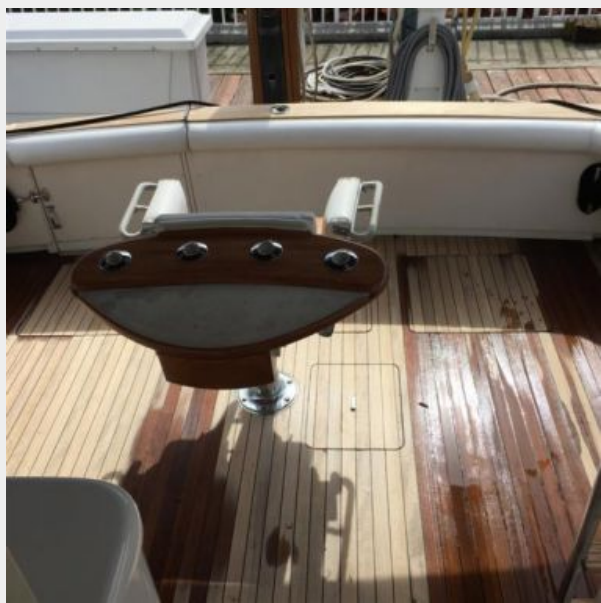
without notice.

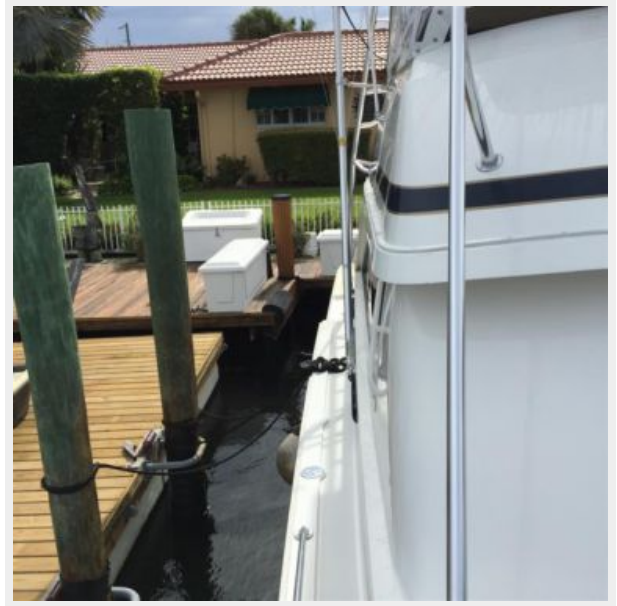
PHOTOS



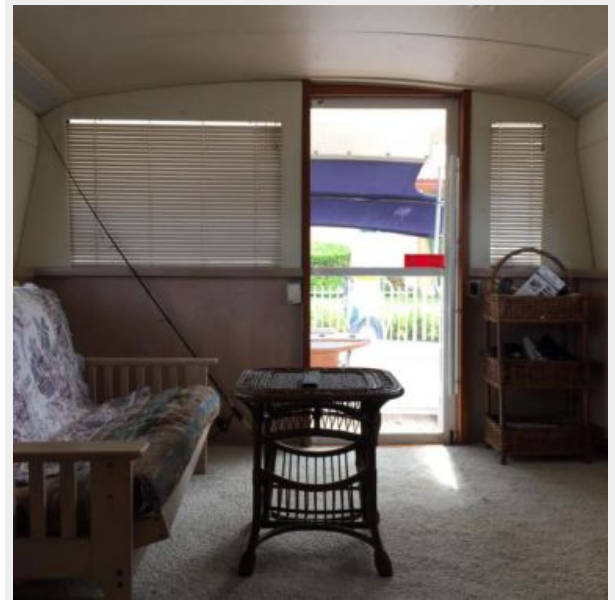


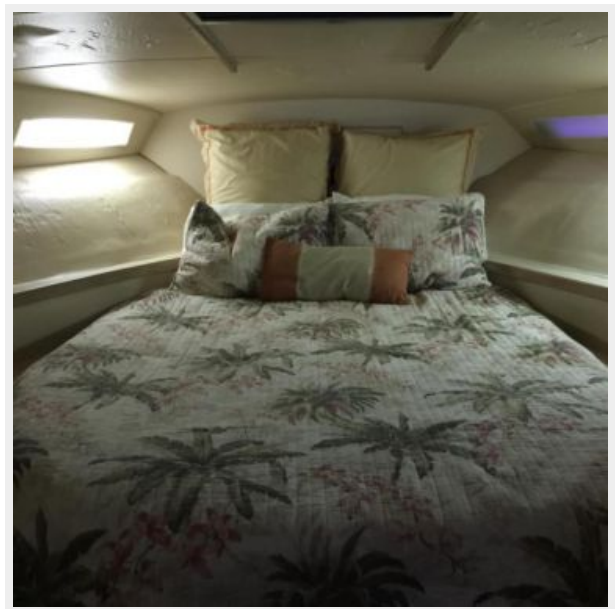


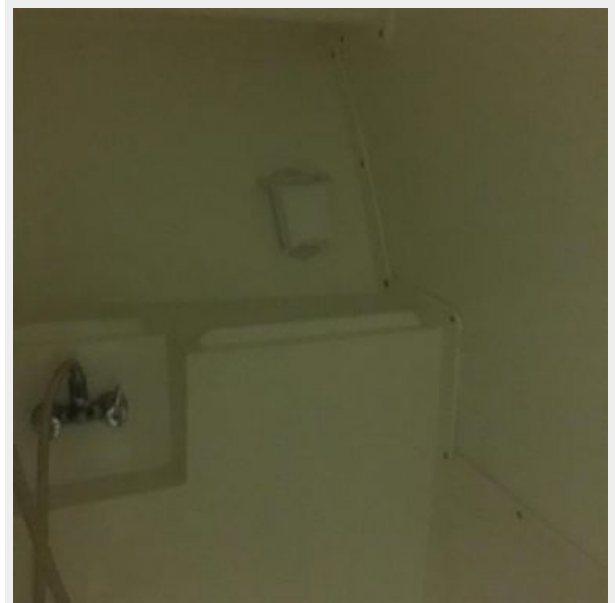
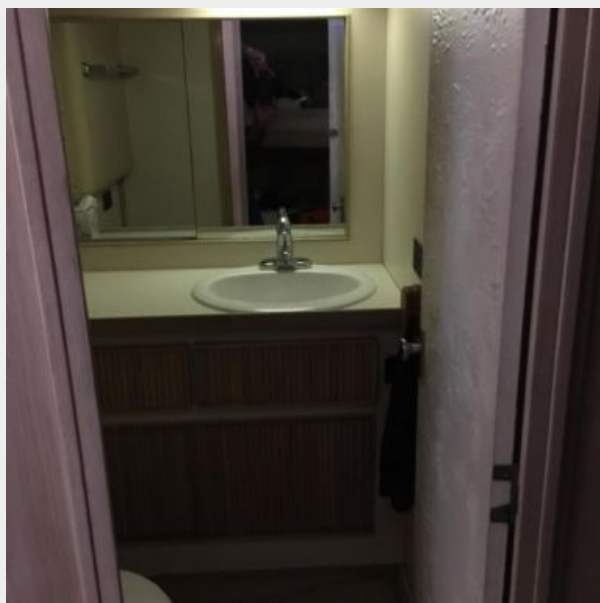


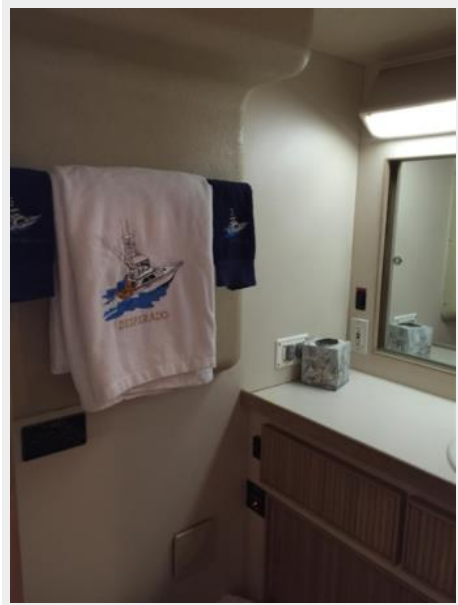
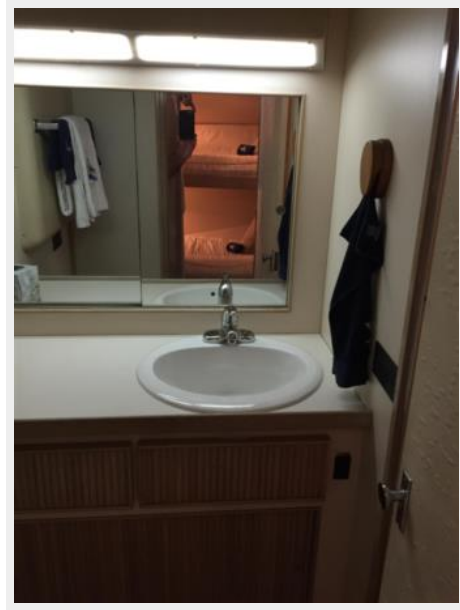














CONTACTS

Andrey Shestakov, leading yacht broker of the sales department of Shestakov Yacht Sales Inc. Shestakov Yacht Sales Inc., the official representative of the Miami/Fort Lauderdale FL headquarters.

Contact details

Email: andrey@shestakovyachtsales.com

Web: shestakovyachtsales.com/en/

Telephones

USA: +1(954)274-4435

Office hours

Monday – Saturday: **9:00 - 21:00** EDT

Sunday: **closed**

Address



Harbour Towne Marina, 850 NE 3rd St,
STE 213, Dania, FL 33004