

## KNOT SO FAST — AMERICAN TUG



**Судостроитель:** AMERICAN TUG

**Год постройки:** 2008

**Модель:** Траулер

**Цена:** **ЦЕНА ЯХТЫ ПО ЗАПРОСУ**

**Местонахождение:** United States

**Длина общая:** 41' 0" (12.50m)

**Ширина:** 15' 10" (4.83m)

**Мин. осадка:** 4' 10" (1.47m)

**Макс. осадка:** 4' 10" (1.47m)

**Крейс. скорость:** 8 Kts. (9 MPH)

**Макс. скорость:** 14 Kts. (16 MPH)

Купить **Knot So Fast — AMERICAN TUG** а также выбрать подходящую вам яхту из нашего каталога яхт вам поможет опытный яхтенный брокер Андрей Шестаков. На сегодняшний день компания **Shestakov Yacht Sales Inc.** имеет большое количество яхт в собственном списке продаж, а также тесно сотрудничает со всеми крупными яхтенными производителями по всему миру.

Для того чтобы купить яхту **Knot So Fast — AMERICAN TUG** а также проконсультироваться по любому вопросу связанному с покупкой, продажей, чартером яхт позвоните по телефону **+7(918)465-66-44**.

# ОГЛАВЛЕНИЕ

ОГЛАВЛЕНИЕ	2
ХАРАКТЕРИСТИКИ	6
Обзор	6
Основная информация	6
Размеры	6
Скорость, вместимость и масса	6
Размещение	7
Корпус и палуба	7
Информация о двигателе	7
ПОДРОБНОЕ ОПИСАНИЕ	8
41' American Tug Overview	8
41' American Tug Vessel Walkthrough	8
41' American Tug Accommodations	8
41' American Tug Salon	8
41' American Tug Galley	8
41' American Tug Dining	9
41' American Tug Master Stateroom	9
41' American Tug Guest Stateroom	9
41' American Tug Laundry	9
41' American Tug Raised Pilothouse	9
41' American Tug Flybridge	10
41' American Tug Aftdeck	10
41' American Tug Audio/Visual Equipment	10
41' American Tug Electronics	10
41' American Tug Electrical System	11
41' American Tug Engine/Mechanical Equipment	11
41' American Tug Deck Equipment	12
41' American Tug Tender	12

41' American Tug Safety & Fire Protection	12
41' American Tug Exclusions	13
41' American Tug Disclaimer	13
Исключения	13
Отказ от ответственности	13
<b>ФОТОГРАФИИ</b>	<b>14</b>
41' American Tug starboard forward profile	14
41' American Tug port aft profile	14
41' American Tug anchor windlass	14
41' American Tug starboard aft profile	14
41' American Tug foredeck	15
41' American Tug foredeck aft	15
41' American Tug port side deck photo1	15
41' American Tug port side deck photo2	15
41' American Tug starboard side deck photo1	16
41' American Tug starboard side deck photo2	16
41' American Tug flybridge forward photo1	16
41' American Tug flybridge forward photo2	16
41' American Tug flybridge aft	17
41' American Tug flybridge port	17
41' American Tug flybridge starboard	17
41' American Tug flybridge helm	17
41' American Tug flybridge hinged arch	17
41' American Tug tender	17
41' American Tug tender davit	18
41' American Tug aftdeck port	18
41' American Tug aftdeck starboard	18
41' American Tug BBQ grill	18
41' American Tug lazarette access	18

---

41' American Tug swimplatform	18
41' American Tug salon aft	19
41' American Tug salon forward	19
41' American Tug salon port	19
41' American Tug salon port seating	19
41' American Tug salon starboard forward	19
41' American Tug salon starboard	19
41' American Tug salon starboard seating photo1	20
41' American Tug salon starboard seating photo2	20
41' American Tug galley photo1	20
41' American Tug galley photo2	20
41' American Tug pilothouse forward	20
41' American Tug pilothouse port	20
41' American Tug pilothouse starboard	21
41' American Tug pilothouse helm photo1	21
41' American Tug pilothouse helm photo2	21
41' American Tug pilothouse seating	21
41' American Tug pilothouse freezer	21
41' American Tug pilothouse icemaker	21
41' American Tug pilothouse overhead	22
41' American Tug master stateroom	22
41' American Tug master stateroom forward	22
41' American Tug master stateroom aft	22
41' American Tug master stateroom head	23
41' American Tug master stateroom starboard	23
41' American Tug master stateroom shower	23
41' American Tug guest stateroom	23
41' American Tug guest stateroom head	24
41' American Tug guest stateroom shower	24

---

---

41' American Tug washer-dryer	24
41' American Tug engine room forward	24
41' American Tug engine room aft	25
41' American Tug main engine	25
41' American Tug Racor fuel filters	25
41' American Tug oil change system	25
41' American Tug watermaker	25
41' American Tug water heater	25
41' American Tug central vacuum system	26
41' American Tug electrical panel	26
41' American Tug inverter	26
41' American Tug generator	26
41' American Tug layout	27
<b>КОНТАКТЫ</b>	<b>28</b>
Контактная информация	28
Телефоны	28
Время работы	28
Адрес	28

# ХАРАКТЕРИСТИКИ

## Обзор

Knot So Fast is a 2008 41' American Tug flybridge trawler in excellent condition. She offers a 2 stateroom 2 head layout, beautiful Sapele wood interior, raised pilothouse, flybridge, single Volvo-Penta main engine, low-hour Northern Lights generator, bow & stern thrusters and a very nice electronics package. Knot So Fast has a hinged Radar arch, and she is a Great Loop veteran.

## Основная информация

<b>Тип судна:</b> Траулер	<b>Подкатегория:</b> Tug
<b>Модельный год:</b> 2008	<b>Год постройки:</b> 2008
<b>Страна:</b> United States	<b>Регистрационный номер:</b> TQG41033J708
<b>Верх:</b> Enclosed Pilothouse	<b>Открытая палуба мостика:</b> Да

## Размеры

<b>Длина общая:</b> 41' 0" (12.50m)	<b>Длина по ватерлинии:</b> 37' 9" (11.51m)
<b>Ширина:</b> 15' 10" (4.83m)	<b>Мин. осадка:</b> 4' 10" (1.47m)
<b>Макс. осадка:</b> 4' 10" (1.47m)	<b>Трапы:</b> 16' 0" (4.88m)

## Скорость, вместимость и масса

<b>Крейс. скорость:</b> 8 Kts. (9 MPH)	<b>Макс. скорость:</b> 14 Kts. (16 MPH)
<b>Водоизмещение:</b> 30000 Pounds	<b>Вместимость воды:</b> 210 Gallons
<b>Вместимость сточного бака:</b> 84 Gallons	<b>Объем топливного бака:</b> 640 Gallons

## Размещение

---

**Всего кают:** 2

**Всего коек:** 3

**Спальные места:** 4

**Всего ком. состава:** 2

## Корпус и палуба

---

**Материал корпуса:** Fiberglass

**Материал палубы:** Composite Fiberglass

**Комплектация корпуса:** Semi-Displacement

**Цвет корпуса:** Blue

**Отделка корпуса:** Aluminum

**Дизайнер корпуса:** Tomko Marine Group **Дизайнер интерьера:** Lynn Senour

## Информация о двигателе

---

**Двигатели:** 1

**Производитель:** Volvo Penta

**Модель:** D9

**Тип двигателя:** Inboard

**Тип топлива:** Diesel

---

# ПОДРОБНОЕ ОПИСАНИЕ

---

## 41' American Tug Overview

---

Knot So Fast is a 2008 41' American Tug flybridge trawler in excellent condition. She offers a 2 stateroom 2 head layout, beautiful Sapele wood interior, raised pilothouse, flybridge, single Volvo-Penta main engine, low-hour Northern Lights generator, bow & stern thrusters and a very nice electronics package. Knot So Fast has a hinged Radar arch, and she is a Great Loop veteran.

## 41' American Tug Vessel Walkthrough

---

Entering the salon from the covered aftdeck, you will find L-shaped seating/berth with hilo folding Mahogany table to starboard, lounge chair to port, galley port forward, entertainment center starboard forward. Step up into the pilothouse and you will find wing doors to each side deck, helmseat, benchseat and table aft. Starboard forward is the companionway to the staterooms with the master stateroom amidship and the guest stateroom forward. Engine room access is via salon sole hatches.

## 41' American Tug Accommodations

---

Knot So Fast offers a master stateroom amidships with a queen size berth and ensuite head with enclosed shower and a guest stateroom forward with a double size berth below and a single berth above and an ensuite head with enclosed shower. The salon seating also converts to a double size berth.

## 41' American Tug Salon

---

The salon offers L-shaped seating that converts to a double size berth and hi/lo folding Mahogany table to starboard, lounge chair to port, carpet, opening side and aft windows with screens and United Shade day/night blinds, storage cabinets, fold-up table port forward and a Diamond Seaglaze water tight door aft.

## 41' American Tug Galley

---

The galley is located port forward in the salon.

- Nova Kool refrigerator/freezer
- Sharp Carousel Grill2 convection/microwave oven



- Princess 3-burner electric ceramic cooktop and oven
- Storage drawers and cabinets
- Granicote solid-surface countertop with molded-in double sinks
- Vinyl teak & holly sole
- Nova Kool freezer in the pilothouse
- Sea Freeze icemaker in the pilothouse

---

## 41' American Tug Dining

---

Dining space is available at the salon hi/lo folding Mahogany table, the salon fold-up table and the pilothouse table.

---

## 41' American Tug Master Stateroom

---

The master stateroom is amidships and offers a queen size berth, nightstands, reading lights, 2 portlights, fans, storage drawers and cabinets, Cedar-lined hanging locker, shelf, carpet, full-length mirror and ensuite head with enclosed shower.

---

## 41' American Tug Guest Stateroom

---

The guest stateroom is forward and offers a double size berth below, a single berth above, carpet, 2 portlights, overhead hatch, storage cabinets and drawers, reading lights and an ensuite head with enclosed shower.

---

## 41' American Tug Laundry

---

- Bosch Axxis washer
- Bosch Axxis dryer

---

## 41' American Tug Raised Pilothouse

---

The raised pilothouse offers wing doors to each side deck, a full console forward, a Stidd helm benchseat, a benchseat and table aft, opening side and aft windows, fold-up table starboard aft, storage, Sea Freeze icemaker, Nova Kool freezer and carpet.

---

## 41' American Tug Flybridge

---

The flybridge offers a non-skid deck, bimini, hinged stainless steel Radar arch, full helm forward with storage, 2 helmseats and benchseats on each side. Tender storage is aft and there is a stainless steel ladder and hatch to the aftdeck.

---

## 41' American Tug Aftdeck

---

The covered aftdeck offers a non-skid deck, transom door, storage, stainless steel ladder and hatch to the flybridge, molded-in steps to each side deck, mooring line hooks, hot/cold fresh water shower and a Dickinson stainless steel BBQ grill.

---

## 41' American Tug Audio/Visual Equipment

---

- KVH Tracvision M3 satellite TV system
- Tracvision interface box in the salon
- DirecTV+ HD DVR in the salon
- Samsung flat screen TV in the salon
- Aquatec AV stereo/CD/sat ready player in the salon
- Insignia flat screen TV in the master stateroom
- Polyplaner speakers

---

## 41' American Tug Electronics

---

- Raymarine super HD Digital Radar
- Raymarine Ray218 VHF on the flybridge and in the pilothouse
- Raymarine G-Series multi-function system with 17" displays on the flybridge and in the pilothouse
- Raymarine ST8002 SmartPilot autopilot with remote in the pilothouse
- Ritchie Powerdamp magnetic compass in the pilothouse
- Raymarine AIS250 AIS receiver
- Great Loop charts

---

## 41' American Tug Electrical System

---

- Northern Lights M753W2 8 kW generator with approximately 478 hours
- Magnum 2812 inverter/charger with remote panel
- Blue Seas electrical panel
- Xantrex battery monitor panel
- 12vdc outlets in the pilothouse
- Smart Alternator V3 regulator
- ProMariner ProSafe galvanic isolator
- 50 amp shore cord
- Glendinning Cablemaster shore cord system

---

## 41' American Tug Engine/Mechanical Equipment

---

- Volvo Penta D9 575 hp main engine with approximately 2265 hours
- Twin Disc MG 5075-A gearboxes
- Volvo Penta electronic engine controls
- Volvo Penta engine control panels
- New Providence Marine systems monitor panel
- Groco ARG-2000 sea strainer
- Racor 75900 MAX dual fuel filters with vacuum gauge
- Reverso oil change system
- Sidepower bow & stern thrusters
- Teleflex Capilano hydraulic steering system
- Marine Air systems reverse cycle air conditioning/heating system
- King electric heating system
- Village Marine Tec SPW watermaker
- Seaward 11 gallon water heater (2013)

- Intervac central vacuum system
- Vacuflush heads
- Sealand Sanigard holding tank vent filters
- Hull bottom painted in 2015
- New holding tanks in 2013 (84 gallons total)

---

## **41' American Tug Deck Equipment**

---

- Lofrens Tigres TG014285 anchor windlass with foot controls and remote controls at each helm
- Double stainless steel anchor rollers
- Sea Hook 30 kg anchor
- Non-skid decks
- Stainless steel rails
- Stainless steel deck hardware
- Washdowns forward and aft
- Windshield cover
- Dockwater connection
- Hot/cold fresh water shower aft
- Fiberglass swimplatform
- Stainless steel swim ladder

---

## **41' American Tug Tender**

---

- Rigid tender
- Yamaha 15 hp 4-stroke outboard
- Steelhead Marine WD800 davit

---

## **41' American Tug Safety & Fire Protection**

---

- Fireboy FE241 engine room fire suppression system
- Fireboy engine emergency shutdown system
- Rule bilge pumps
- Rule bilge high water alarm
- ACR searchlight
- Raymarine security camera in the engine room and on the aftdeck

---

## 41' American Tug Exclusions

---

- Sellers' personal belongings
- Artwork
- Tools

---

## 41' American Tug Disclaimer

---

The Company offers the details of this vessel in good faith but cannot guarantee or warrant the accuracy of this information nor warrant the condition of the vessel. A buyer should instruct his agents, or his surveyors, to investigate such details as the buyer desires validated. This vessel is offered subject to prior sale, price change, or withdrawal without notice.

---

## Исключения

---

При продаже яхты исключаются личные вещи владельца.

---

## Отказ от ответственности

---

Компания предоставляет описание судна или яхты добросовестно, но не может гарантировать точность этой информации, а также не ручается за техническое состояние. Покупатель должен проинструктировать своих агентов или оценщиков исследовать представленную информацию более подробно, по собственному желанию. Продажа судна или яхты, изменение цены или снятие с продажи будет происходить без предварительного уведомления.

# ФОТОГРАФИИ

41' American Tug starboard forward profile



41' American Tug port aft profile



41' American Tug anchor windlass



41' American Tug starboard aft profile



**41' American Tug foredeck**



**41' American Tug foredeck aft**



**41' American Tug port side deck photo1**



**41' American Tug port side deck photo2**



41' American Tug starboard side deck photo1



41' American Tug starboard side deck photo2



41' American Tug flybridge forward photo1



41' American Tug flybridge forward photo2





**41' American Tug flybridge aft**



**41' American Tug flybridge port**



**41' American Tug flybridge starboard**



**41' American Tug flybridge helm**



**41' American Tug flybridge hinged arch**



**41' American Tug tender**



**41' American Tug tender davit**



**41' American Tug aftdeck port**



**41' American Tug aftdeck starboard**



**41' American Tug BBQ grill**



**41' American Tug lazarette access**



**41' American Tug swimplatform**



**41' American Tug salon aft**



**41' American Tug salon forward**



**41' American Tug salon port**



**41' American Tug salon port seating**



**41' American Tug salon starboard forward**



**41' American Tug salon starboard**



41' American Tug salon starboard seating photo1



41' American Tug salon starboard seating photo2



41' American Tug galley photo1



41' American Tug galley photo2



41' American Tug pilothouse forward



41' American Tug pilothouse port



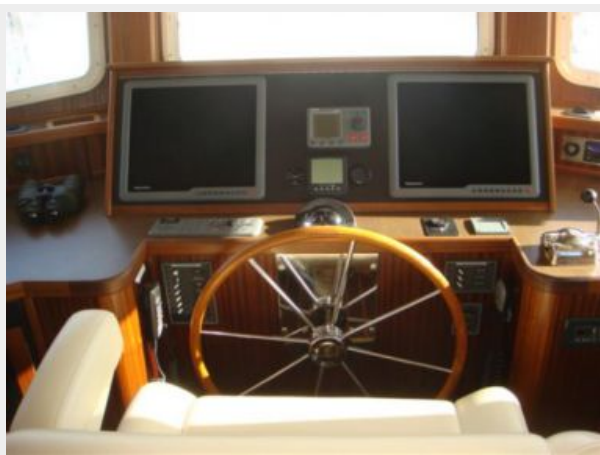
**41' American Tug pilothouse starboard**



**41' American Tug pilothouse helm photo1**



**41' American Tug pilothouse helm photo2**



**41' American Tug pilothouse seating**



**41' American Tug pilothouse freezer**



**41' American Tug pilothouse icemaker**



**41' American Tug pilothouse overhead**



**41' American Tug master stateroom**



**41' American Tug master stateroom  
forward**



**41' American Tug master stateroom aft**



**41' American Tug master stateroom starboard**



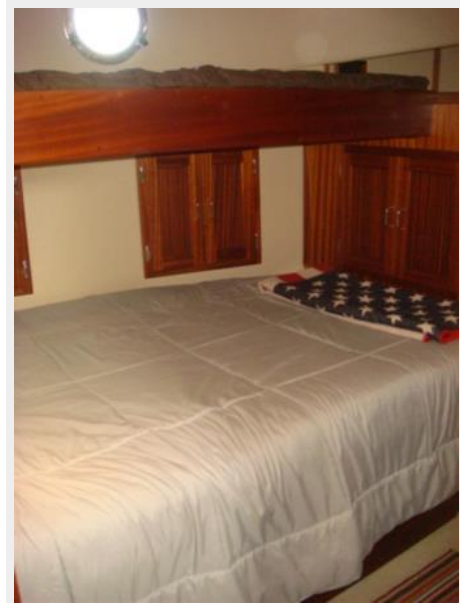
**41' American Tug master stateroom head**



**41' American Tug master stateroom shower**



**41' American Tug guest stateroom**



41' American Tug guest stateroom head



41' American Tug guest stateroom shower



41' American Tug washer-dryer

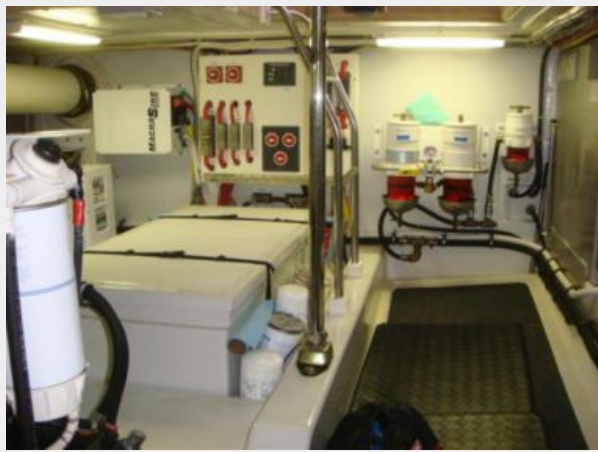


41' American Tug engine room forward





41' American Tug engine room aft



41' American Tug main engine



41' American Tug Racor fuel filters



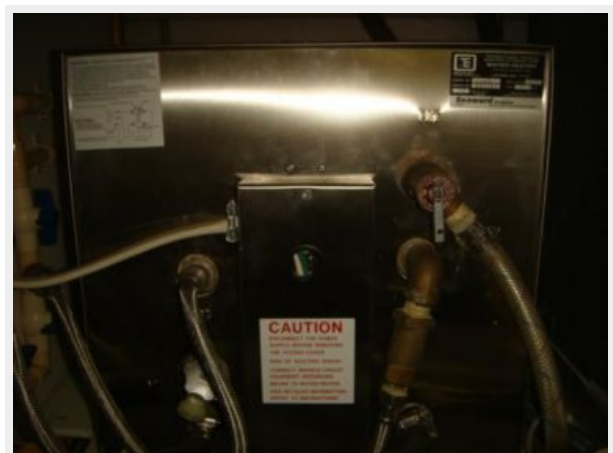
41' American Tug oil change system



41' American Tug watermaker



41' American Tug water heater



41' American Tug central vacuum system



41' American Tug electrical panel



41' American Tug inverter



41' American Tug generator



### 41' American Tug layout



# КОНТАКТЫ

---

Андрей Шестаков (Andrey Shestakov) – ведущий яхтенный брокер отдела продаж яхт и судов компании Shestakov Yacht Sales Inc. Официальный представитель Shestakov Yacht Sales Inc. для русскоговорящих клиентов в центральном офисе компании в Майами/Форт Лодердейл/Флорида/США.

## Контактная информация

---

Email: [andrey@shestakovyachtsales.com](mailto:andrey@shestakovyachtsales.com)

Web: [shestakovyachtsales.com](http://shestakovyachtsales.com)

## Телефоны

---

Краснодарский край: **+7(918)465-66-44**

США, Майами, Флорида: **+1(954)274-4435**

## Время работы

---

Понедельник – Суббота: **9:00 - 21:00**  
EDT

Воскресенье: **Закрито**

## Адрес

---



Harbour Towne Marina, 850 NE 3rd St,  
STE 213, Dania, FL 33004