

MIGHTY PAWN — RODMAN



Судостроитель: RODMAN

Год постройки: 2004

Модель: Моторная яхта

Цена: **ЦЕНА ЯХТЫ ПО ЗАПРОСУ**

Местонахождение: United States

Длина общая: 57' 0" (17.37m)

Ширина: 16' 0" (4.88m)

Мин. осадка: 4' 6" (1.37m)

Крейс. скорость: 27 Kts. (31 MPH)

Макс. скорость: 37 Kts. (43 MPH)

Купить **Mighty Pawn — RODMAN** а также выбрать подходящую вам яхту из нашего каталога яхт вам поможет опытный яхтенный брокер Андрей Шестаков. На сегодняшний день компания **Shestakov Yacht Sales Inc.** имеет большое количество яхт в собственном списке продаж, а также тесно сотрудничает со всеми крупными яхтенными производителями по всему миру.

Для того чтобы купить яхту **Mighty Pawn — RODMAN** а также проконсультироваться по любому вопросу связанному с покупкой, продажей, чартером яхт позвоните по телефону **+7(918)465-66-44**.

ОГЛАВЛЕНИЕ

| | |
|-------------------------------|----|
| ОГЛАВЛЕНИЕ | 2 |
| ХАРАКТЕРИСТИКИ | 4 |
| Обзор | 4 |
| Основная информация | 4 |
| Размеры | 4 |
| Скорость, вместимость и масса | 5 |
| Размещение | 5 |
| Корпус и палуба | 5 |
| Информация о двигателе | 5 |
| ПОДРОБНОЕ ОПИСАНИЕ | 6 |
| Accommodations | 6 |
| Salon | 6 |
| Galley | 6 |
| Master Stateroom | 7 |
| Guest Stateroom 1 | 7 |
| VIP Stateroom 1 | 7 |
| Entertainment System | 7 |
| Electronics | 8 |
| Cockpit | 8 |
| Electrical Equipment | 8 |
| Hull and Deck | 9 |
| Fly Bridge | 9 |
| Lazarette | 10 |
| Construction | 10 |
| Other Features | 10 |
| Исключения | 10 |
| Отказ от ответственности | 11 |
| ФОТОГРАФИИ | 12 |

| | |
|-----------------------|----|
| КОНТАКТЫ | 20 |
| Контактная информация | 20 |
| Телефоны | 20 |
| Время работы | 20 |
| Адрес | 20 |

ХАРАКТЕРИСТИКИ

Обзор

Rodman is serious. With yards in Vigo, Santo Antonia, and Moana, Spain, there are many models in Europe. The company has been building commercial ships since 1974 and has delivered more than 10,000 vessels, many for the Spanish Navy as well as other military and commercial applications. After 10 years since construction one can peer into the hard to reach areas of this vessel and find NO sign of the slightest moisture. Rodmans are tanks and she is a must see with her low hour, very efficient Volvo D 12's. Original tests reported WOT speed of 37.4 mph, with the twin 715-hp Volvo D12 diesels turning 2350 rpm. Backed off to 2000 rpm she can make 27-30mph.

Originally purchased new by a very knowledgable yachtsman who researched the best of the best motor yachts on the market before deciding on the Rodman. Why? His years of owning the top US, Taiwanese, and European yachts led him to Rodman polyships. Mighty Pawn is a beautiful 3 Stateroom 2 head layout. Beautiful lines and designed with the elegance of the finer euro motor yachts. Loaded with equipment and extras as well as being in superb condition. A must see for anyone desiring this type of Motor yacht. Offered for sale by her 2nd owner. She is properly maintained.

Основная информация

Тип судна: Моторная яхта

Модельный год: 2004

Год постройки: 2004

Страна: United States

Размеры

Длина общая: 57' 0" (17.37m)

Ширина: 16' 0" (4.88m)

Мин. осадка: 4' 6" (1.37m)

Скорость, вместимость и масса

Крейс. скорость: 27 Kts. (31 MPH)

Макс. скорость: 37 Kts. (43 MPH)

Вместимость воды: 205 Gallons

Вместимость сточного бака: 205 Gallons

Объем топливного бака: 740 Gallons

Размещение

Всего кают: 3

Всего ком. состава: 2

Корпус и палуба

Материал корпуса: Fiberglass

Информация о двигателе

Производитель: Volvo Penta

Модель: D-12

Тип топлива: Diesel

ПОДРОБНОЕ ОПИСАНИЕ

Accommodations

This is a great entertaining / family and cruising boat with all the amenities you could ask for. On deck, there is plenty of seating, sunbathing areas and the flybridge is fully equipped for outdoor entertaining. She features a 3 stateroom layout with two heads, finished in hi-gloss cherry wood and accented with teak and holly flooring.

Salon

Entering from the cockpit through double stainless steel sliding doors you will find the open and airy saloon with large windows that will allow natural light as well panoramic views. To starboard is large U Shaped settee with storage below accompanied with a glass top/cherry table. Aft to port is a cabinet housing the entertainment equipment, storage for dishes, etc and a glass front glass rack. Next there is a love seat settee, and another cabinet, which has pullout glass and bottle storage. Atop this you will find the staircase to the flybridge. To starboard is the Euro-Style galley down 3 steps- completely equipped for the most demanding chef. Forward is the command station with full instrumentation w/ twin adjustable seating.

Opposite to port is the dinette with a large oval Cherry table. The living quarters are down four steps with the vessels main breaker panel to starboard as you are headed forward to the Master Stateroom with new drapes.

Galley

- Double sided stainless steel sink with pull out faucet
- Tile backsplash
- Bosch refrigerator / freezer
- Bosch Four-burner cook top w/ hood and fan with exhaust to the outside
- Panasonic micro/convection oven
- Isotherm ice maker
- Teak and holly floor
- Cherry cabinetry
- Storage in floor
- Galley is loaded with cabinets and drawers

Master Stateroom

Forward with queen centerline berth with large storage beneath, upholstered headboard, 2 hanging lockers, storage port and starboard outboard of the bed. This stateroom features new décor, drapers and bed cove. Rodman 57 Write up Storage cabinet with drawers to port with TV, VCR and stereo. Large overhead hatch with built in screen with privacy covers. Private ensuite head with separate shower stall with door and tile backsplash.

Guest Stateroom 1

Forward with queen centerline berth with large storage beneath, upholstered headboard, 2 hanging lockers, storage port and starboard outboard of the bed. This stateroom features new décor, drapers and bed cove. Rodman 57 Write up Storage cabinet with drawers to port with TV, VCR and stereo. Large overhead hatch with built in screen with privacy covers. Private ensuite head with separate shower stall with door and tile backsplash.

-

VIP Stateroom 1

The VIP guest stateroom is located to port and aft of the second head and has a queen size berth, upholstered headboard, and storage beneath. Drawer's outboard on both sides. Drapes, high-gloss cherry wood accents, movable vanity/makeup table with mirror and a large hanging locker. Also included TV, VCR and stereo. There is new decor, bed cover, drapes, and headboard.

Entertainment System

- KVH G4 Trac Vision satellite tracker
- 20" Sharp LC 20B2UB TV in salon, New
- 15" Sharp LC 15B2UB TV in master
- 15" Sharp LC 15B2UB TV in VIP
- 15" Sharp LC 15B2UB TV in Guest
- Satellite receivers in salon
- Bose Lifestyle 35 Entertainment System with 2 separate controls to separately control sound in the salon and the bridge.
- (4) RCA VCRs
- (3) Audiovox, AM/FM, CD

Electronics

- VHF Radios
- Raymarine 230 on bridge
- Raymarine 230 w/ hailer and intercom at lower station
- Raymarine ST 60 Depth and speed w/ repeater on flybridge
- Raymarine RL 80 CRC X2 for charts & radar on flybridge
- Raymarine DSM 300 digital sounder
- Raymarine RL 70 CRC x2 for charts & radar on flybridge
- Raymarine 5S 48" 4KW open array radar
- Sea Fire suppression model FD850M
- Epirb class 1 ACR model 406
- KVH g4 Trac Vision Sat tracker

Cockpit

- Self draining cockpit with upholstered seating
- Entrance to Lazerette at aft seating area with cover
- Teak cockpit deck, swim platform and flybridge steps
- Fresh water shore connection
- Hot and cold deck shower
- Foldaway stainless swim ladder
- Electric winches port and starboard for aft mooring lines
- Staircase to bridge
- Glendinning Cablemaster
- Transom gate
- Boarding steps
- Davit, Nautical structures 800lb, New

Electrical Equipment

- Off Shore Marine watermaker (not proven)
- 17 KW Onan generator
- Mastervolt battery charger
- Mastervolt inverter
- Max Power Series 100 bow thruster 12V, 8.9 HP

- AC 125/240V 50 amps 60 HZ electrical system
- Main battery switch w/ remote control panel at helm station
- Parallel battery switch
- Shore power cable 75'
- 100 Amp battery charger
- 110V receptacles throughout vessel
- DC 24V ship's electrical system

Hull and Deck

- Anchor
- Vertical electric windlass 2,500W w/controls at deck, helm station, and flybridge
- Vetus pressurized water system
- Teak decks
- Glendenning Cable Master w/hand held remote - 75' cable
- Davit, Nautical Structures 800lb, New
- Charles Marine Isoboost
- A/C Cruisair DX (direct expansion) w/ SMXII controls
- Offshore Marine Labs watermaker SE-380C (pickled not proven)
- Deck wash downs
- Anchor wash down
- Self draining chain locker
- Shore water connection
- Shore power cable 125/250 V
- Emergency bilge system
- All deck fittings in 316L stainless steel
- Stainless steel pulpit and handrails
- Large stainless steel cleats
- Textaline front and side window covers in black, New 2013
- Bottom paint and service, Black, 2014
- New boot top, black, 2014
- Hull waxed, March 2014

-

Fly Bridge

- Bosch barbeque grill
- Sink and refrigerator beneath, all under cover
- Bimini top

- Access hatch to salon
- Twin helmsman seat with backrest and seat cover
- Full engine instrumentation
- Anchor windlass controls
- Stainless steel arch for radar antenna and nav lights
- Full duplication electronics
- Compass
- Autopilot ST 7001 repeater
- Large sunbathing area
- U-shaped upholstered settee with table w/ cover

Lazzarette

- Bosch Washer/Dryer
- Danby Freezer
- Custom Ladder Entrance

Construction

- Hand laid fiberglass construction built to Lloyd's specs
- Hull with molded spray rails
- Deep "V" At bow and 17' dead rise at stern
- Laminated GRP frames, girders
- Reinforced propeller strut attachments
- Optimized propeller tunnels increasing propeller efficiency

Other Features

Class "A" Lloyds certified construction

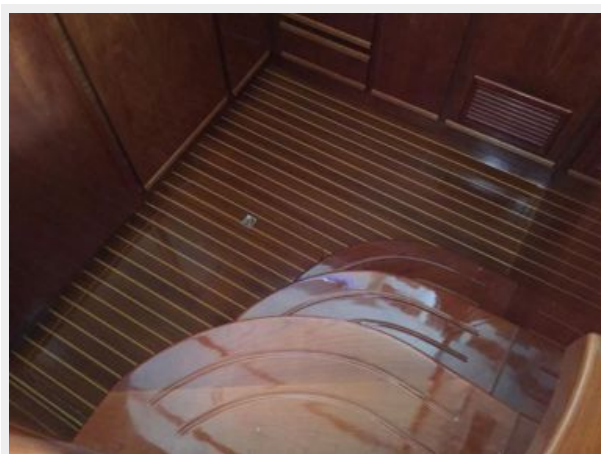
Исключения

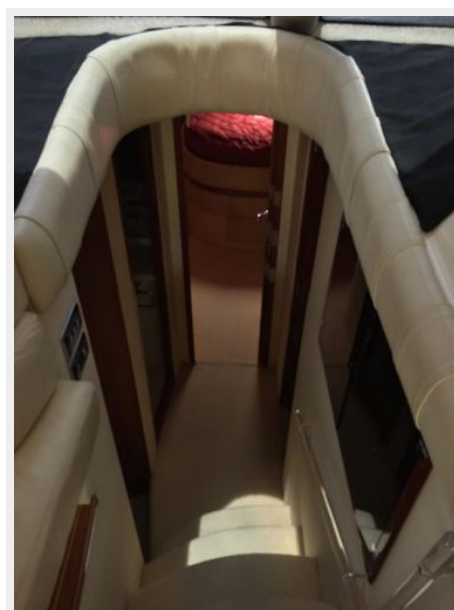
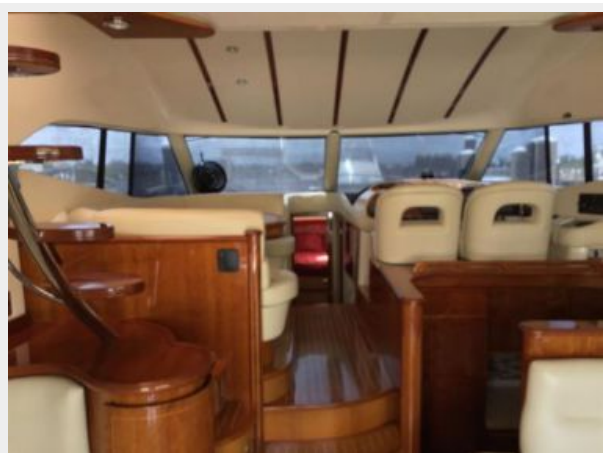
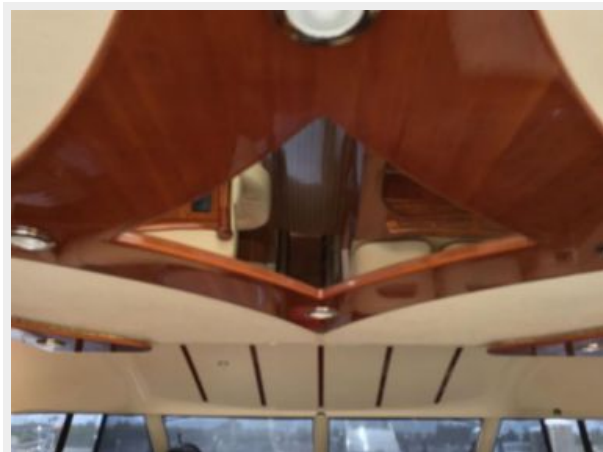
При продаже яхты исключаются личные вещи владельца.

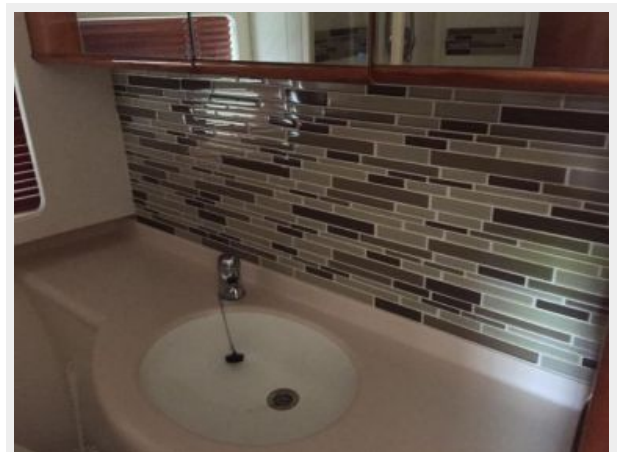
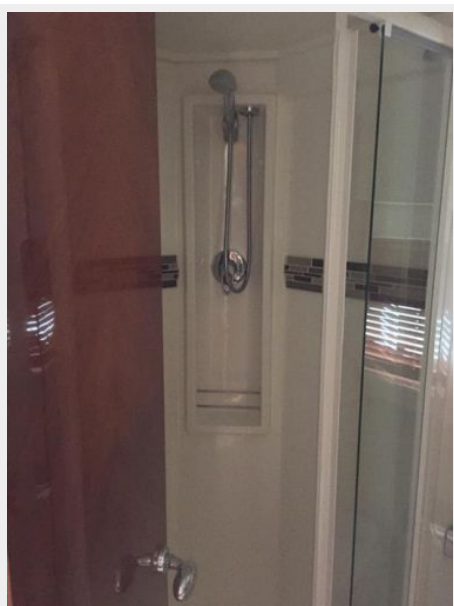
Отказ от ответственности

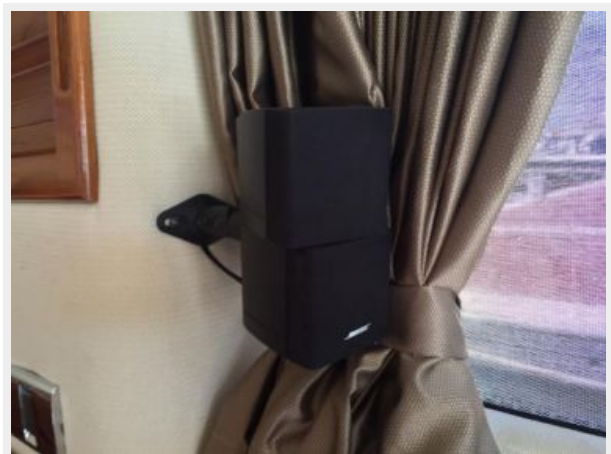
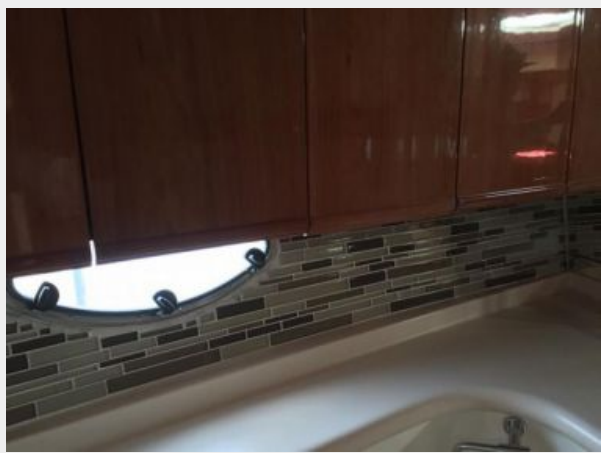
Компания предоставляет описание судна или яхты добросовестно, но не может гарантировать точность этой информации, а также не ручается за техническое состояние. Покупатель должен проинструктировать своих агентов или оценщиков исследовать представленную информацию более подробно, по собственному желанию. Продажа судна или яхты, изменение цены или снятие с продажи будет происходить без предварительного уведомления.

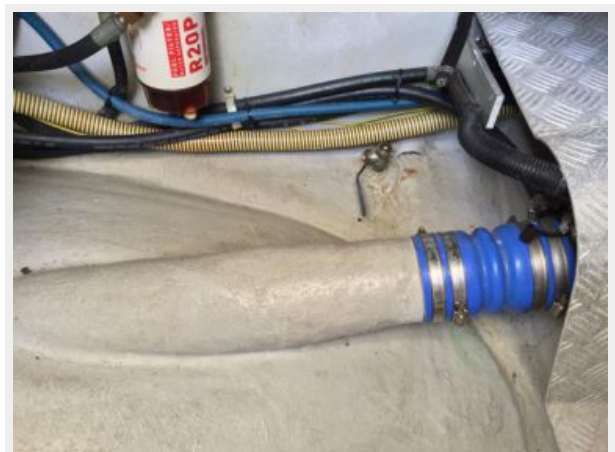
ФОТОГРАФИИ

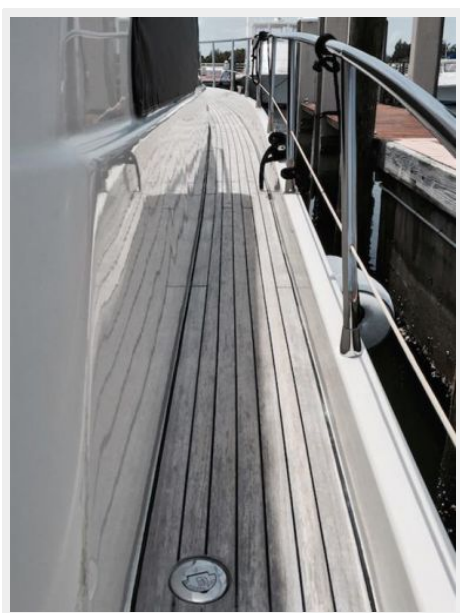
















КОНТАКТЫ

Андрей Шестаков (Andrey Shestakov) – ведущий яхтенный брокер отдела продаж яхт и судов компании Shestakov Yacht Sales Inc. Официальный представитель Shestakov Yacht Sales Inc. для русскоговорящих клиентов в центральном офисе компании в Майами/Форт Лодердейл/Флорида/США.

Контактная информация

Email: andrey@shestakovyachtsales.com

Web: shestakovyachtsales.com

Телефоны

Краснодарский край: **+7(918)465-66-44**

США, Майами, Флорида: **+1(954)274-4435**

Время работы

Понедельник – Суббота: **9:00 - 21:00**
EDT

Воскресенье: **Закрето**

Адрес



Harbour Towne Marina, 850 NE 3rd St,
STE 213, Dania, FL 33004