

MEMBERS ONLY — OCEAN YACHTS



Builder: [Ocean Yachts](#)

Year Built: 1987

Model: Sport Fisherman

Price: PRICE ON APPLICATION

Location: United States

LOA: 48' 0" (14.63m)

Beam: 15' 2" (4.62m)

Max Draft: 3' 6" (1.07m)

Our experienced yacht broker, Andrey Shestakov, will help you choose and buy a yacht that best suits your needs **Members Only — Ocean Yachts** from our catalogue. Presently, at Shestakov Yacht Sales Inc., we have a wide variety of yachts available on our sale's list. We also work in close contact with all the big yacht manufacturers from all over the world.

If you would like to buy a yacht **Members Only — Ocean Yachts** or would like help answering any questions concerning purchasing, selling or chartering a yacht, please call **+1(954)274-4435**

TABLE OF CONTENTS

TABLE OF CONTENTS	2
SPECIFICATIONS	5
Basic Information	5
Dimensions	5
Speed, Capacities and Weight	5
Accommodations	5
Hull and Deck Information	5
Engine Information	5
DETAILED INFORMATION	6
Overview	6
Specifications	6
Salon/Galley	6
Master Stateroom	6
Master Head-Ensuite	6
Guest Stateroom	7
Guest Head	7
Flybridge	7
Electronics and Navigational Equipment	7
Fishing Equipment	7
Cockpit	7
Engine and Mechanical	7
Updates/Features	8
Exclusions	8
Disclaimer	8
PHOTOS	9
Salon	9
Salon	9
Salon	9

Salon	9
Salon	9
Salon	9
Salon	10
Salon	10
Galley	10
Galley	10
Master Stateroom	11
Galley	11
Master Stateroom	11
Master Stateroom	11
Master Head	12
Guest Stateroom	12
Guest Stateroom	12
Guest Stateroom	12
Guest Stateroom	13
Guest Head	13
Flybridge	13
Flybridge	13
Flybridge	13
Flybridge	13
Flybridge	14
Flybridge	14
Flybridge	14
Flybridge	14
Flybridge	14
Flybridge	15
Flybridge	15
Flybridge	15
Flybridge	15

Cockpit	16
Cockpit	16
Cockpit	16
Cockpit	16
Cockpit	16
Cockpit	16
Engine Room	17
Engine Room	17
Engine Room	17
Engine Room	17
CONTACTS	18
Contact details	18
Telephones	18
Office hours	18
Address	18

SPECIFICATIONS

Basic Information

Category: Sport Fisherman

Model Year: 1987

Year Built: 1987

Country: United States

Dimensions

LOA: 48' 0" (14.63m)

Beam: 15' 2" (4.62m)

Max Draft: 3' 6" (1.07m)

Speed, Capacities and Weight

Displacement: 40000 Pounds

Accommodations

Total Cabins: 2

Hull and Deck Information

Hull Material: Fiberglass

Engine Information

Manufacturer: Detroit Diesel

Model: 692

DETAILED INFORMATION

Overview

The Ocean Yacht 48 SS was the best-selling 48' sportfish in her class. There were a total of 167 built between 1986 and 1990. "Members Only" features the two bedroom two head layout with galley down. The current owners have performed many upgrades since her purchase from the original owner to include but not limited to: Full paint job, electronic controls were added, sat T.V, Flat screen T.V's, new enclosure, and updated electronics. She has a beautiful teak deck and covering boards as well as varnished trim around the house. Her very strong Detroit 692's have just 600 hours on them (SMOH). Please do not miss your opportunity to see this well maintained very popular boat! Please call or email to schedule your showing today.

Specifications

•Length Overall: 48' •Beam: 15' 2" •Headroom: 6' 6" •Deadrise Aft: 2 degrees •Displacement, Weight: 40,000 lbs •Draft: 3' 6" •Bridge Clearance: 13' 3" (Hardtop) •Water Capacity: 150 U.S. Gal. •Fuel Capacity: 580 U.S. Gal. •Engines: Detroit Diesel 692 •Engine Hours: 600 SMOH •Engine Horsepower: 530 HP •Propellers: 4 blade

Salon/Galley

•(4) Burner stove with oven •Microwave •Instant hot water •Walnut sole (Galley) •Fire extinguisher •Stainless sink with faucet •New refrigerator •Large 6 cu. Ft. freezer •(4) Overhead cabinets •(4) Slide out drawers •Large storage under sink •Garbage •Water tank gauge •Wet bar with automated drink dispenser •Ice maker •End table with drawer storage below •Rod storage under port sofa •Sat TV with custom built cabinet •Dinette to starboard •Love seat •Window treatments •AC/DC electrical panel •Engine room access

Master Stateroom

•Walk around queen bed •(2) Night stands with storage beneath •Overhead storage above bed •Large opening hatch •Sat TV •AC •Queen bed with (2) drawers below •Hanging closet •Ensuite head and shower

Master Head-Ensuite

•Freshwater vacuum Head •Hot/Cold Shower •Holding Tank Level indicator Lights •Linen storage •Medicine cabinet •Overhead hatch

Guest Stateroom

•(2) Single berths •A.C. •Flat screen Sat TV •Night stand •Hanging closet •Large overhead storage •Slide drawer storage under berths •Reading lamp •Large mirror •Ensuite head and shower

Guest Head

•Freshwater vacuum head •Linen storage •Storage cabinetry below sink •Hot/Cold shower •Holding tank indicator lights •110V Outlet •Medicine cabinet •Overhead hatch

Flybridge

•New enclosure 2014 •Cushions •(2) Helm Chairs •Forward Bench Seating with storage below •Starboard bench seating with storage below •L-Shaped Overhead grab Rail •(2) Large storage compartments on port side helm •Forward Brow Storage •Speakers

Electronics and Navigational Equipment

•(2) Garmin 7212 GPS, Plotter, Sounder, Radar •Clarion 12V Stereo XM,CD, AM,FM •1 KW Transducer •Autopilot •Icom VHF radio •Open array radar •Dytek digital temp •KVH Tracvision Sat •Ritchie 3" Compass •Horn •International Navigation lights •Overhead electronics box •Helm gauges •Bennet trim tabs •Electronic controls •Spotlight •(2) KVH Receivers

Fishing Equipment

•Rupp triple Spreader Outriggers •Center rigger •(4) Rod Holders in Covering Boards •(6) Rod Holders on Flybridge •(4) Rod holders on ladders •Aft Freshwater sink and rigging station •Tackle center in cockpit •In deck insulated fish box •Live well •Freezer •Aft Cockpit Controls •Transom Door and Lift Gate •Electric reels in hardtop

Cockpit

•Teak deck and covering boards •Rod/Gaff storage under gunwales •Aft cockpit controls •Tackle center •Freezer •Sink/water tank fill •Fish box •Fresh/Saltwater rinse down •Fighting chair •Transom door with lift gate •Overhead courtesy lights •Wrap around combing bolsters

Engine and Mechanical

•(2) Aft spreader lights •Glendenning Cable master •Pro Mariner 30 amp battery charger •High

water bilge alarm •Courtesy light overhead (2) •Racor fuel/water separators (Mains and Gen)
•Hynautic hydraulic steering •Oil X Change oil change system •Westerbeke 8KW generator 4553
hours

Updates/Features

- New enclosure 2014 •Engines have 600 hours SMOH •Heat exchangers serviced 2014
- Topsides painted •Recently varnished

Exclusions

Owner's personal belongings.

Disclaimer

The Company offers the details of this vessel or yacht in good faith but cannot guarantee or warrant the accuracy of this information nor warrant the condition of the vessel. A buyer should instruct his representatives, agents, or his surveyors, to investigate such details as the buyer desires validated. This vessel or yacht is offered subject to prior sale, price change, or withdrawal without notice.

PHOTOS

Salon



Salon



Salon



Salon



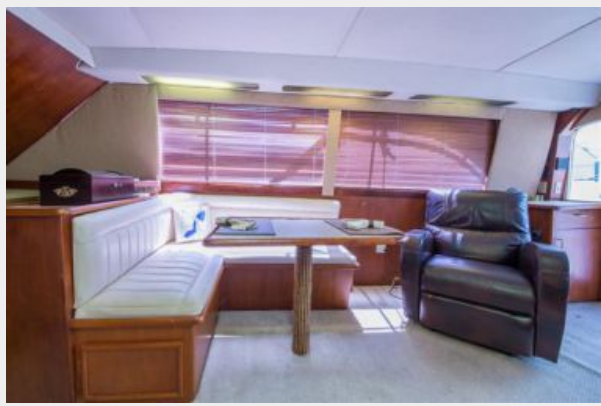
Salon



Salon



Salon



Salon



Galley



Galley



Galley



Master Stateroom



Master Stateroom



Master Stateroom



Master Head



Guest Stateroom



Guest Stateroom



Guest Stateroom



Guest Stateroom



Guest Head



Flybridge



Flybridge



Flybridge



Flybridge



Flybridge



Flybridge



Flybridge

Flybridge



Flybridge



Flybridge



Flybridge

Flybridge



Cockpit



Cockpit



Cockpit



Cockpit



Cockpit



Cockpit



Engine Room



Engine Room



Engine Room



Engine Room



CONTACTS

Andrey Shestakov, leading yacht broker of the sales department of Shestakov Yacht Sales Inc. Shestakov Yacht Sales Inc., the official representative of the Miami/Fort Lauderdale FL headquarters.

Contact details

Email: andrey@shestakovyachtsales.com

Web: shestakovyachtsales.com/en/

Telephones

USA: +1(954)274-4435

Office hours

Monday – Saturday: **9:00 - 21:00** EDT

Sunday: **closed**

Address



Harbour Towne Marina, 850 NE 3rd St,
STE 213, Dania, FL 33004