

CHANGE ORDER — PRINCESS YACHTS



Судостроитель: PRINCESS YACHTS

Год постройки: 2010

Модель: Моторная яхта

Цена: **ЦЕНА ЯХТЫ ПО ЗАПРОСУ**

Местонахождение: United States

Длина общая: 78' 0" (23.77m)

Ширина: 18' 6" (5.64m)

Макс. осадка: 5' 6" (1.68m)

Крейс. скорость: 34 Kts. (39 MPH)

Макс. скорость: 39 Kts. (45 MPH)

Купить **Change Order — PRINCESS YACHTS** а также выбрать подходящую вам яхту из нашего каталога яхт вам поможет опытный яхтенный брокер Андрей Шестаков. На сегодняшний день компания **Shestakov Yacht Sales Inc.** имеет большое количество яхт в собственном списке продаж, а также тесно сотрудничает со всеми крупными яхтенными производителями по всему миру.

Для того чтобы купить яхту **Change Order — PRINCESS YACHTS** а также проконсультироваться по любому вопросу связанному с покупкой, продажей, чартером яхт позвоните по телефону **+7(918)465-66-44**.

ОГЛАВЛЕНИЕ

ОГЛАВЛЕНИЕ	2
ХАРАКТЕРИСТИКИ	5
Обзор	5
Основная информация	5
Размеры	5
Скорость, вместимость и масса	6
Размещение	6
Корпус и палуба	6
Информация о двигателе	6
ПОДРОБНОЕ ОПИСАНИЕ	7
Standard Equipment	7
Cockpit	7
Salon/ Dining	8
Helm	9
Galley	9
Master Stateroom	9
VIP Stateroom	10
Port Guest Stateroom	10
Bunk Stateroom to Starboard	11
Engine Room and Mechanical Equipment	11
Deck Fittings	11
Electrical Equipment	12
Fuel System	12
Water System	12
Broker Comments	12
Исключения	13
Отказ от ответственности	13
ФОТОГРАФИИ	14

Change Order	14
Aft View	14
Aft Deck	14
Aft Controls	14
Aft Deck	14
Wet Bar	14
Aft Seating	15
Aft Sun Pads	15
Bow Sunpads	15
Bow	15
Engine Room	15
Engine Room	15
Crew	16
Crew	16
Dining/ Salon	16
Salon	16
Dining	16
Galley	16
Helm	17
Helm	17
Helm	17
Laundry	17
Master	17
Master	17
Master Vanity	18
Master Head	18
Guest Stateroom	18
Guest Head	18
Guest Stateroom with Bunks	18

Guest Head	18
VIP	19
VIP Head	19
КОНТАКТЫ	20
Контактная информация	20
Телефоны	20
Время работы	20
Адрес	20

ХАРАКТЕРИСТИКИ

Обзор

Change Order was purchased in May of 2015 in Europe.

This yacht has been professionally and fully converted by a licensed/bonded Marine electrician to accept USA 110/220 volt 60 HZ electric in June of 2015. Here are a few of the upgrades:

1. (2) New Glendenning Cablemasters 7/2015
2. All Interior outlets are 110v 60 HZ and all of the appliances have all been replaced or professionally adapted to run on USA 60HZ 110/220V power as required.
3. Wireless Yacht Controller allows joystick style, wireless yacht maneuvering. New 8/2015
4. All new exterior Cushions. We used the same fabric and color pattern as is utilized on some of the New Princess yachts. 6/2015
5. CAT Full Warranty on the C 32 Acerts
6. Recent Hull and Machinery surveys. All surveyors recommendations complied with as of 6/2015.
7. Both helm Chairs have been recovered with new, premium leather. 6/2015
8. All new audio/visual systems at costs exceeding \$50,000.00 USD.
9. Only 725 HRS since new.
10. Speeds of a BLISTERING 38 Knots at W.O.T.
11. Duel engine pump supplied Hydraulic Bow and Stern Thrusters.
12. Replacement cost of this vessel is approaching 5 Million USD. (Depending on Options).

Основная информация

Тип судна: Моторная яхта

Модельный год: 2010

Год постройки: 2010

Страна: United States

Размеры

Длина общая: 78' 0" (23.77m)

Длина по ватерлинии: 76' 4" (23.27m)

Ширина: 18' 6" (5.64m)

Макс. осадка: 5' 6" (1.68m)

Длина привального бруса: 78' 2"
(23.83m)

Скорость, вместимость и масса

Крейс. скорость: 34 Kts. (39 MPH)

Макс. скорость: 39 Kts. (45 MPH)

Водоизмещение: 104179 Pounds

Размещение

Всего кают: 4

Всего коек: 6

Спальные места: 8

Каюты экипажа: 1

Койки экипажа: 2

Спальных мест экипажа: 2

Комм. состав экипажа: 1

Корпус и палуба

Материал корпуса: Fiberglass

Информация о двигателе

Двигатели: 2

Производитель: Caterpillar

Модель: C32 Acert

Тип двигателя: Inboard

Тип топлива: Diesel

ПОДРОБНОЕ ОПИСАНИЕ

Standard Equipment

- Power-assisted electro-hydraulic steering system
- Hydraulic Bow thruster 240 kgf- lty
- 24v DC/240v AC electrical system
- 240v shore power with 2 x 80-amp float battery chargers
- 220v/240v diesel generator (22.5 kw)
- Full air conditioning
- Remote control electric anchor winch
- Electro-hydraulic trim tabs with indicators
- Autopilot
- VHF with DSC R/T
- 2 Furuna Navnet 3D Rada with scanner and GPS/chart plotter (twin displays)
- Speed and distance log
- Remote control searchlight
- Combination microwave/conventional oven/grill
- Refrigerator (full height with deep freeze)
- Icemaker
- Dishwasher
- Cockpit wetbar with sink, top loading coolbox and electric barbecue
- Vacuflush toilets with holding tank
- Saloon LCD TV/DVD with surround-sound system
- Teak-laid transom platform/cockpit deck/steps to side decks
- Cockpit sunbed and cushions
- Double opening stainless steel framed saloon door with drop window
- Hard top with electrically operated sliding sunroof
- Electro-hydraulically opening garage with storage for tender or wet bike
- Transom door
- Transom platform with electro-hydraulic raise/lower mechanism'Hot and cold transom shower
- Tonneau cover

Cockpit

The aft cockpit produces a welcoming area to enter the boat and a great lounge while at the dock or under weigh. U-shaped seating around a teak table and L-shaped sofa to starboard. To port is the wet bar, refrigerated drink box and grill.

Further aft is a large sunpad.. The passerelle extends from under the step for Mediterranean docking.

• Teak decking • U-shaped seating/dining area with folding table and additional L-shaped seating area w/ storage forward to starboard • Cockpit wetbar with stainless steel sink, top loading coolbox, electric barbecue, waste bin and storage • (3) Paneled sunbed aft with new cushions & electric hatch with storage area • Storage garage for dinghy/jet ski and general stowage with electro-hydraulic aft door and electric winch system for dinghy/jet ski retrieval • Life raft storage (for 2 x 8 man) • Access door to crew cabin • 220/240v shore support inlet • Storage lockers- port & stbd • Stainless-steel grabrails • Cockpit lighting • Cockpit speakers are linked to salon surround sound system with local control. Infinity speakers & 2 JL audio speakers (2012) • Twin cockpit gates with clear Lexan. The aft deck and leads to the hydraulic bathing platform, hot and cold transom shower, foldaway swimming ladder. • Aft deck hard top to aft rail cover • Markilux electric cockpit sunshade • Swim platform with hydraulic power lift for easy water access for your jet-ski or tender. (400 kg capacity)

Salon/ Dining

Through the triple sliding glass doors into the saloon. White leather sofas, wenge floors, and the beautiful high gloss walnut wood paneling finish compliment this area. Extra full length large windows to port and starboard further adds an airy, open feeling. The opening aft bulkhead window and sliding stainless steel framed doors gives you a huge open space from the aft deck all the way forward to the windshield.

The hidden TV with Satellite and Bose Lifestyle 5.1 systems offers entertainment and adds music to the atmosphere or you can watch movies. There is a drink fridge forward with glass and bottle storage.

Forward to port is formal dining for eight with white leather covered L-shape sofa and 4 matching chairs surrounding a beautiful high gloss walnut dining table.

Overhead is an opening hardtop skyroof. It is the width of the saloon and almost 8' long.

• U-shaped white leather sofa with coffee table to starboard • White leather sofa to port • Bar unit incorporating refrigerator, bottle and glass storage to starboard • Entertainment centre incorporating LeD TV/DVD/radio/MP3 with power lift linked to bose surround sound system • L-shaped dining table- Fwd to port w/ white leather L shaper settee & 4 white leather chairs • All windows have safety glass • Electric opening window to starboard and aft • Blinds, curtains or sunscreens on all windows and doors • Overhead down lighters and concealed lighting • Electrically operated opening sunroof • Double opening stainless-steel framed saloon door with drop window to starboard • Cruisair A/C w/ digital control • 42" Samsung flatscreen TV - is hidden and has a power lift system • Bose DVD/CD, MP3/ iPhone speaker surround sound • Wenge wood sole w/ white carpet in salon area • Aft deck, salon, galley, and master stateroom all have cool LED lighting • Large opening hardtop sunroof with custom panels that cover the 3 clear windows overhead when desired

Helm

The helm is well designed for the captain with all gauges and instruments are easily accessed and operated. The twin captain's chairs with electronic operation for raising, lowering and sliding. The side door gives the captain immediate access to the side deck.

Electronic CAT engine controls, Digital CAT displays, Bennett trim tabs, Furuno GPS/Radar/Autopilot, Electronic CAT engine displays

Hydraulic sidepower- Bow and stern thrusters

Eplex electronic touchscreen for complete systems control.

- 2 helm seats with electric controls- leather treatment 2014 • Ac/Dc control systems panel • Door to side deck • VDO Instrument panel • VDO Fuel gauges • Hydraulic Power-assisted steering • VDO rudder position indicator • Bennett electro-hydraulic trim tab controls with indicators • 2 Furuno 12" Navnet 3D Displays • Furuno Navpilot • Plastimo high-speed compass • Furuno speed log • Furuno echo sounder with alarm • Simrad RS87 VHF • Anchor winch remote control • Chart area • 3 Windscreen wipers with freshwater wash rinse • 3 Bilge pump controls with visual 'pump running' indicators • Fuel contamination alarm system • Air-conditioning outlets. • 12v outlet • Red night lighting and white overhead light • Oceanview night vision camera • 1 Sidedeck water tight door • Furuno AIS system display • Princess leather wrapped tilt steering wheel

Galley

Down the stairs to starboard is the galley finely appointed with beautiful white marble countertops. The full galley has Vitrifrigo refrigerator and 2-drawer freezer along with a Vitrifrigo icemaker; twin stainless steel sinks with Hansgrohe faucet; Neff four-zone cooktop; Neff dishwasher; Panasonic microwave/convection oven; Bosch Exxcel washer/dryer combi unit.

- Granite counter-tops • Four-zone ceramic hob w/ exhaust hood & light • Combination microwave/conventional oven with grill • Ice maker • Dishwasher • Stainless-steel sinks with Monobloc mixer taps • Full height fridge/freezer • Storage cupboards, drawers and lockers • Waste bin • Combination Bosch washer/dryer and storage in companionway • Cruisair Air-conditioning control • Abundant drawer and cabinet storage

Master Stateroom

Moving aft is the Master Suite running the full beam of the yacht amidships. Large portlights bring in the light outside and keep bed this area bright and open. The island king sits on the forward bulkhead and with bedside nightstands on each side. The dressing table and walk in closet are to port. Starboard under the side windows is the leather chaise lounge. All the way aft

is the Master bath with beautiful white marble floors and vanities. The towel warmer exemplifies the class this yacht represents

- Large King size bed on center-line • Dressing table with chair and multiple storage drawers. • A Samsung flat screen 42" TV and SAT TV with Bose 3.2.1 sound system. • Walk-in wardrobe
- Built-in safe • Chaise lounge • Drawers, cupboards and storage lockers • Overhead LED lights and individual berth lights • 2- black and chrome reading lamps • DVD/radio/ MP3 with surround sound system en-suite bathroom: • Twin white marble washbasins with Samuel Heath mixer taps • Separate shower cubicle with automatic shower pump-out • Extractor fan • Mirror • Storage lockers • Large stall shower w/ Hansgrohe fixture & white marble floors • Dometica Vacuflush head • This cabin is light and open with light-fabric paneled walls

VIP Stateroom

Forward at the bow is the private VIP Stateroom with Ensuite Head. This nice, warm bedroom gives your guests privacy and comfort. The opening double skylight has an electric shade and there are opening portlights to bring outside light.

Island berth with hanging lockers to port and starboard provides your guests with a very nice place to retire to after a day on the water. A Samsung 19' TV with Kenwood DVD and a Bose 3.2.1 sound system adds to their comfort. The ensuite head has beautiful light marble vanity and a large enclosed shower.

- Large double bed • Vanity unit with storage • Wardrobe with shelves • Drawers, cupboards and storage lockers • LED TV/DVD/radio/MP3 • Overhead and individual berth lights • Deck hatch with fly screen and blind en-suite bathroom: • Washbasin with Monobloc mixer tap • separate shower cubicle with automatic shower pump-out • extractor fan • Mirror • storage lockers

Port Guest Stateroom

To port is the 2nd guest stateroom. This room has twin berths with drawer space and a hanging locker. There is entry to the third day head. Marble floor and vanity with separate shower. Entry from the hall sees this head double as the day head aft.

- Two full-size single berths- side by side • Wardrobe with shelf and hanging locker • Storage lockers • Downlighters and individual berth lights • Ensuite bathroom w/ stall shower • Washbasin with Samuel Heath mixer tap • Separate shower cubicle with automatic shower pump-out • Extractor fan • Mirror • Storage locker. • Separate access from passageway as well as from cabin • 2 Opening port lights • Wood venetian blinds • 1 Kenwood CD/DVD/MP3 player
- 1 Samsung 19" flatscreen TV

Bunk Stateroom to Starboard

To starboard is the 3rd guest stateroom. This room has twin berths with drawer space and a hanging locker. There is entry to the third day head. Marble floor and vanity with separate shower. Entry from the hall sees this head double as the day head aft.

- Two full-size single berths
- Wardrobe with shelf and hanging locker
- Storage lockers
- Downlighters and individual berth lights
- Ensuite bathroom w/ stall shower
- Washbasin with Samuel Heath mixer tap
- Separate shower cubicle with automatic shower pump-out
- Extractor fan
- Mirror
- Storage locker
- Separate access from passageway as well as from cabin
- 2 Opening port lights
- Wood venetian blinds
- 1 Kenwood CD/DVD/MP3 player
- 1 Samsung 19" flatscreen TV

Engine Room and Mechanical Equipment

2x 1825HP Caterpillar C32 Acerts . Bow and stern thrusters make close quarter maneuvering a breeze. Redundant hydraulic power from either motor for safety. Five blade veem propellers.

The engine compartment is roomy and tall with engine access even over the tops of the motors. The Onan 27kW generator is aft in a hush box (2000 hrs). Further aft is the doghouse/electrical room housing the A/C units and electrical panels.

- Engine room soundproofed
- High-volume air intakes
- 2 engine room extractor fan with electronic time delay
- Engine exhaust silencers and water-cooled exhausts
- Engine beds integrally moulded with hull for strength and vibration absorption
- Forward and aft engine-room bulkheads integrally bonded
- Engines flexibly mounted
- Automatic fire extinguisher with remote override control
- Automatic and manual bilge pumps
- Engine-room lighting
- Propeller shafts w/ prop speed
- Veem 5-bladed propellers
- High-speed balanced rudders
- Cathodic protection for sterngear
- Sterngear, engines, fuel tank fillers, etc all electrically bonded
- Power-assisted electro-hydraulic steering system
- CAT single-lever electronic engine controls
- Freshwater outlet point in engine room
- Dripless shaft seals
- Dual Separ Fuel water separator- port and stbd engines

Deck Fittings

The Aft sunpad, foward sunpad, teak deck, all have storage fore and aft. Stainless steel handrails from bow to stern with stainless steel grabrails on the deckhouse. The forward sunpad has an electric raising back.

Teak decks in the cockpit and along the sidedecks all the way to the bow. Self stowing anchor with 290 feet of chain and windlass with bow and helm controls.

- Lewmar reversible hydraulic anchor winch with foredeck and helm controls
- Self-stowing

50kg/110lb Delta anchor with 290 feet chain • 2 Bow anchor lockers- port & stbd • Anchor fresh water washdown • Stainless steel stemhead roller with automatic anchor launch and retrieve • Stainless-steel bow, stern and spring cleats (8) • Stainless-steel fairlead and guardrails • Two Lewmar 24V electric stern line winches • Stainless-steel coach roof handrails • Forward sunbed area with new cushions 11/ 2014 • Twin lockers for storage of fenders, ropes and sunbed cushions- forward • Fore deck hatch to VIP cabin • PVC rubbing band with stainless-steel insert • Full set of iMcO navigation lights • Running light • Twin electric horns • Опасные electro-hydraulic telescopic passerelle (4.4m) with remote control • Stern docking lights • Foredeck sunbed with electrically adjustable headboard w/ new cushions (2015)

Electrical Equipment

The 27kW Onan generator (2200 hrs. approx.) is the larger upgraded genset.

24 volt: • 4 x heavy duty batteries for engine starting • 6 x heavy duty auxiliary batteries • engine alternators charge both banks of batteries via automatic switch charging system • 2 x 80amp battery chargers charge both banks of batteries via an automatic switch charging system • Battery paralleling system with remote control at helm position • Remote battery master switches with control switch at main panel • Circuit breakers on all circuits. • 24-12v converter for certain navigation and radio circuits 220/240 volt: • Shore support inlets • Generator/shore support change-over system • Power points in saloon, galley (double), owner's stateroom, guest and crew cabins • Polarity check system • Earth leakage safety trip

Fuel System

Twin fuel tanks with interconnection system giving 1457 US gallons • Fuel fillers on both side decks • 2 High-capacity dual Separ fuel filters/water traps with changeover valves and visual contamination warning at console • Remote fuel shut offs in helm locker • Fuel gauges on helm console

Water System

Water tank totaling 240 Us gallons plus 54 Us gallon hot water heater • Automatic water pump with filter • Main circuit breaker at switch panel • Water level gauge • Deck filler • Electric quietflush Wc system with/106 Us gallon/holding tank, gauge and electric overboard discharge with 2- macerator back-up system as well as dockside discharge system

Broker Comments

Change Order was purchased in May of 2015 in Europe.

This yacht has been professionally and fully converted by a licensed/bonded Marine electrician to accept USA 110/220 volt 60 HZ electric in June of 2015. Here are a few of the upgrades:

1. (2) New Glendenning Cablemasters 7/2015
2. All Interior outlets are 110v 60 HZ and all of the appliances have all been replaced or professionally adapted to run on USA 60HZ 110/220V power as required.
3. Wireless Yacht Controller allows joystick style, wireless yacht maneuvering. New 8/2015
4. All new exterior Cushions. We used the same fabric and color pattern as is utilized on some of the New Princess yachts. 6/2015
5. CAT Full Warrantly on the C 32 Acerts
6. Recent Hull and Machinery surveys. All surveyors recommendations complied with as of 6/2015.
7. Both helm Chairs have been recovered with new, premium leather. 6/2015
8. All new audio/visual systems at costs exceeding \$50,000.00 USD.
9. Only 725 HRS since new.
10. Speeds of a BLISTERING 38 Knots at W.O.T.
11. Dual engine pump supplied Hydraulic Bow and Stern Thrusters.
12. Replacement cost of this vessel is approaching 5 Million USD. (Depending on Options).

Исключения

При продаже яхты исключаются личные вещи владельца.

Отказ от ответственности

Компания предоставляет описание судна или яхты добросовестно, но не может гарантировать точность этой информации, а также не ручается за техническое состояние. Покупатель должен проинструктировать своих агентов или оценщиков исследовать представленную информацию более подробно, по собственному желанию. Продажа судна или яхты, изменение цены или снятие с продажи будет происходить без предварительного уведомления.

ФОТОГРАФИИ

Change Order



Aft View



Aft Deck



Aft Controls



Aft Deck



Wet Bar



Aft Seating



Aft Sun Pads



Bow Sunpads



Bow



Engine Room



Engine Room



Crew



Crew



Dining/ Salon



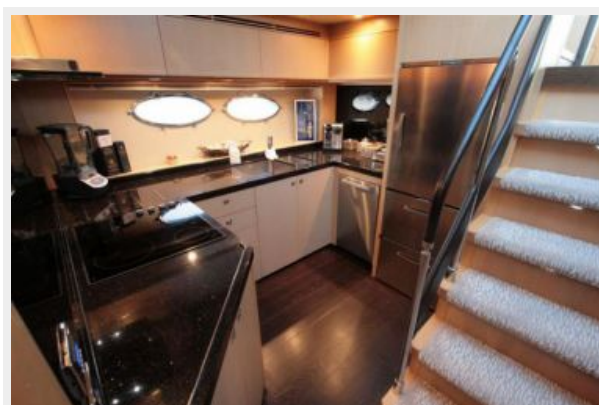
Salon



Dining



Galley



Helm



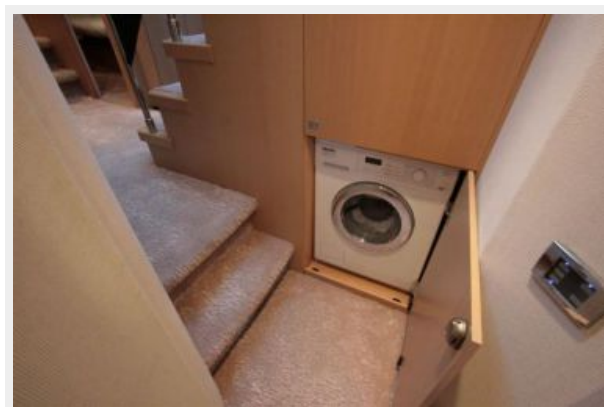
Helm



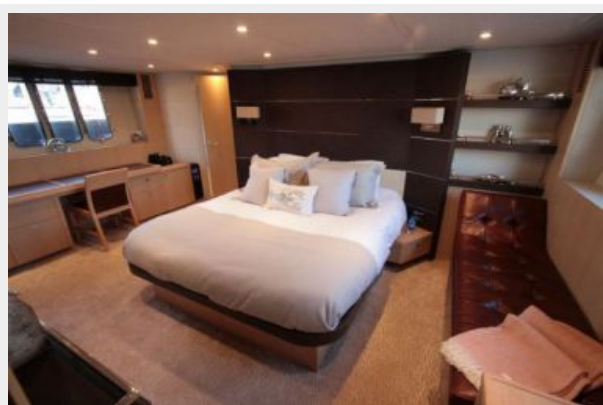
Helm



Laundry



Master



Master



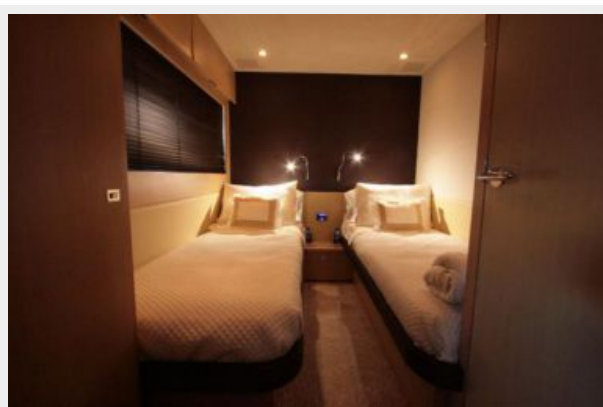
Master Vanity



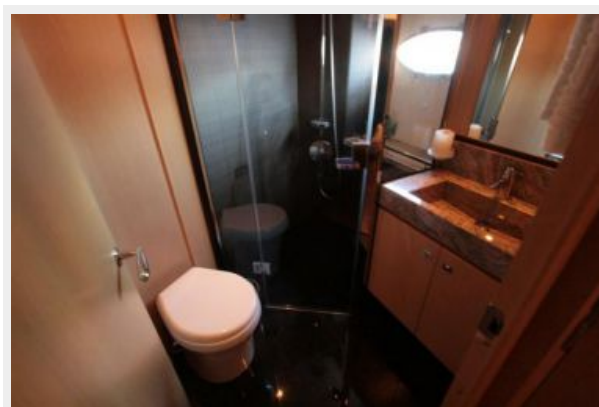
Master Head



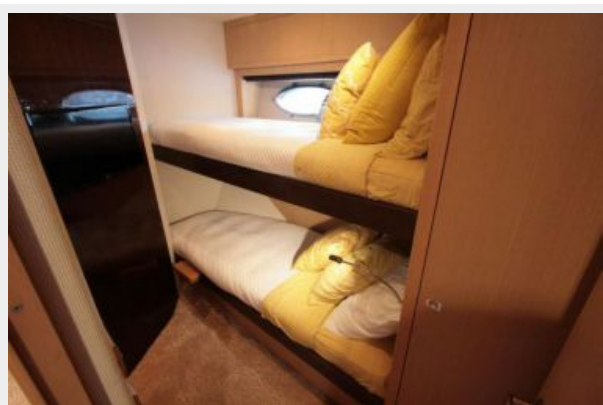
Guest Stateroom



Guest Head



Guest Stateroom with Bunks



Guest Head



VIP



VIP Head



КОНТАКТЫ

Андрей Шестаков (Andrey Shestakov) – ведущий яхтенный брокер отдела продаж яхт и судов компании Shestakov Yacht Sales Inc. Официальный представитель Shestakov Yacht Sales Inc. для русскоговорящих клиентов в центральном офисе компании в Майами/Форт Лодердейл/Флорида/США.

Контактная информация

Email: andrey@shestakovyachtsales.com

Web: shestakovyachtsales.com

Телефоны

Краснодарский край: **+7(918)465-66-44**

США, Майами, Флорида: **+1(954)274-4435**

Время работы

Понедельник – Суббота: **9:00 - 21:00**
EDT

Воскресенье: **Закрето**

Адрес



Harbour Towne Marina, 850 NE 3rd St,
STE 213, Dania, FL 33004