

## BAZINGA — BOSTON WHALER



**Судостроитель:** BOSTON WHALER

**Длина общая:** 42' 0" (12.80m)

**Год постройки:** 2015

**Модель:** Яхты с центральной консолью

**Цена:** ЦЕНА ЯХТЫ ПО ЗАПРОСУ

**Местонахождение:** United States

Купить BaZinga — BOSTON WHALER а также выбрать подходящую вам яхту из нашего каталога яхт вам поможет опытный яхтенный брокер Андрей Шестаков. На сегодняшний день компания Shestakov Yacht Sales Inc. имеет большое количество яхт в собственном списке продаж, а также тесно сотрудничает со всеми крупными яхтенными производителями по всему миру.

Для того чтобы купить яхту BaZinga — BOSTON WHALER а также проконсультироваться по любому вопросу связанному с покупкой, продажей, чартером яхт позвоните по телефону **+7(918)465-66-44**.

# ОГЛАВЛЕНИЕ

---

ОГЛАВЛЕНИЕ	2
ХАРАКТЕРИСТИКИ	4
Основная информация	4
Размеры	4
Размещение	4
Корпус и палуба	4
Информация о двигателе	4
ПОДРОБНОЕ ОПИСАНИЕ	5
Options	5
Deck/ Cockpit	5
Helm Console	6
Open Windshield Hardtop System	6
Deluxe Leaning Post/ Bait Prep Center	7
Exterior Seating	7
Storage Exterior	8
Storage Interior	8
Cabin Interior	8
Galley	9
Enclosed Head Compartment	9
Mechanical	10
Исключения	11
Отказ от ответственности	11
ФОТОГРАФИИ	12
КОНТАКТЫ	18
Контактная информация	18
Телефоны	18
Время работы	18
Адрес	18



# ХАРАКТЕРИСТИКИ

## Основная информация

Тип судна: Яхты с центральной консолью Модельный год: 2015

Год постройки: 2015

Страна: United States

Верх: Hardtop

## Размеры

Длина общая: 42' 0" (12.80m)

## Размещение

Всего кают: 1

## Корпус и палуба

Материал корпуса: Fiberglass

## Информация о двигателе

Двигатели: 4

Производитель: Mercury

Модель: JOYSTICK WHT 300 L6

Тип топлива: Gas

# ПОДРОБНОЕ ОПИСАНИЕ

---

## Options

---

- Q-300 White L6 VDO - Joystick Piloting
- White Rubrail w/ SS insert
- Bow Table w/ Filler Cushion
- Bow Sunshade
- Underwater Lighting (Multi Color/Changing)
- Receptacles 12V at Transom for Reels/ Downriggers (2)
- Engine Water Separator/ Fuel Filters
- Boston Whaler Dishware Set w/ dedicated storage
- Freezer plates in Stbd Fishbox
- White Hardtop Enclosure Curtains
- Theft Deterrence System (subscription required)
- Premium Audio Package
- 15" Raymarine Dual GS165 Electronics / Nav
- 15" GS165 Addt' 1 Display
- Open Array Radar w/ Satellite Weather
- Canvas Cover Package
- Bottom Paint
- 

## Deck/ Cockpit

---

- 10" stainless steel cleats (stern cockpit with gunnel board hawse pipe (2), anchor locker (1))
- 10" stainless steel pull-up cleats (bow (2), spring line (2), cross tie cleats at transom)
- (2) 28" interior free board
- Acrylic transom door with stainless steel latch
- Anchor roller davit – stainless steel thru hull
- Boarding ladder at transom
- Bow tow eye – heavy duty polished stainless steel
- Chrome Boston Whaler logo/model designator
- Drink holders – stainless steel (4 in bow, 2 in hawse pipes, 6 at helm, 2 at console lounge, 2 at leaning post)
- Full coaming bolsters
- Heavy-duty rub rail
- Lighting – LED courtesy lighting in cockpit (blue)
- Livewell – pressurized insulated (24 gallons) in aft port corner with clear lid, blue interior and red and white LED lights
- Molded fiberglass boarding/dive door port side with removable stainless steel dive ladder with dedicated storage

- Rails – cockpit toe rails – stainless steel
- Rails – hand rails; companion way, boarding ladders, prep station – welded stainless steel
- Rails – low profile interior bow rails – welded stainless steel
- Rod holders – gunnel mounted (bow (4), aft cockpit starboard (4), port (1))
- Rod holders – transom mounted (5)
- Rod holders – under gunnel (3)
- Self-bailing cockpit sole
- Ship's bell
- Under gunnel storage shelf with downrigger weight holders (2 per side)
- White rub-rail with stainless steel insert
- Windlass with 400' rode and chain with handheld remote control, stainless steel swivel and polished stainless steel anchor (44 lbs)

## Helm Console

---

### HELM CONSOLE

- A/C vents (2)
- Center helm layout
- Compass
- Dash visor
- Drink holders (2)
- Electrical switch panel with stainless steel switches with illuminated text
- Electronics mounting surface with space for triple 15" displays
- Footrest – port side passenger fold-down footrest
- Footrest molded into console with fold-down standing platform and maintenance free, antifatigue synthetic surface
- Lockable acrylic sliding entry door with translucent skylight inset at the top of door for natural light Lockable glove box with 12-V receptacles and USB charging port
- Mercury DTS dual binnacle controls with integrated engine trim controls
- Mercury SmartCraft Vessel View 7" color LCD
- Display (network connections to Raymarine with Navigation Package)
- Rails – grab rail – stainless steel
- Steering wheel – cast stainless steel with knob and tilt helm
- Stereo – FUSION® full function remote control
- Switches – remote ignition key switches in cabin with push button start/stop at helm
- Windshield defogger with remote shutoff control

## Open Windshield Hardtop System

---

- Custom powder coated frame integrated into the deck providing clean unobstructed

### walkways

- Electronics box with locking latch above helm
- Ladder access to hardtop integrated into hardtop frame, port side
- Lighting – LED flood lights bow (1), cockpit (2)
- Lighting – LED navigation lights
- Lighting – LED overhead courtesy/chart light (red and white)
- Lighting – LED overhead lighting (blue)
- Open tempered side glass with upper removable rigid acrylic canvas curtain
- Outrigger ready
- Rod holders integrated onto hardtop supports (6)
- Sunshade for cockpit – telescoping polished stainless steel frame retracts and deploys electrically (black Sunbrella® canvas)
- Windshield – full tempered glass, full height with electric actuated center vent
- Windshield wipers – (1) stainless steel pantograph with wash-system

## Deluxe Leaning Post/ Bait Prep Center

---

- 120-V outlets (2)
- Bait prep area with cutting board
- Drink holders (2)
- Electric grill with hinged solid surface lid over grill providing counter surface when not in use
- Freshwater sink with hot and cold water
- Leaning post cushion on forward side of prepstation that also converts to a 3 person bench seat providing a second row of seating
- Lighting – LED task lighting
- Livewell – pressurized with viewing window, clear lid, blue interior and red and white LED lights (Insulated 40 gallons)
- Pump switch panel with 12-V outlet
- Rail – grab rail – stainless steel
- Refrigerator/freezer – stainless steel drawer
- 12-V/120-V (2.3 cubic ft) (starboard side)
- Solid surface countertop
- Storage lid with tool holders, storage nets and leader holders Tackle storage drawers (3) (port side)

## Exterior Seating

---

- Flip-up backrest at forward end of lounge providing wraparound seating
- Fold-away stern bench seat
- Forward console lounge with fold-down armrests, drink holders (4), backrests and removable cushion

- Forward port and starboard seats with folding backrests and drink holders (4) with stereo remote and 12-V receptacle on port side
- Helm and companion bolster style seats (3) with fold-down armrests (center seat is electrically actuated) (port and starboard seats rotate to rear facing seat)
- Leaning post cushion on forward side of the prep station that also converts to 3 person bench seat providing a second row of seating behind the helm

---

## Storage Exterior

---

- Bilge storage aft
- Bow anchor locker with drains
- Coaming storage pockets with acrylic doors in port and starboard fore deck area
- Coaming storage pockets with net retainers in port and starboard helm deck area
- Forward lounge storage – miscellaneous gear, fender storage or optional dive tank storage
- Insulated built-in storage/cooler compartment at forward end of the console lounge
- Insulated in-floor fishboxes with drains, helm deck (2)
- Insulated in-floor storage/fishbox with drains, fore deck (2)
- Insulated in-floor storage/fishboxes with pump-out, cockpit (2)
- Lifejacket or weather curtain storage in overhead hardtop storage compartment
- Lighting – LED lighting in storage compartments
- Lockable electronics box in hardtop
- Lockable glove box
- Prep station side pocket
- Prep station storage drawers
- Storage under bow seating

---

## Storage Interior

---

- Companionway hanging locker
- Galley – cabinet aft of microwave
- Galley – hinged lid integrated into countertop providing access to storage compartment
- Galley – pull-out waste receptacle and dish storage
- Head cabinetry
- Storage under interior seating

---

## Cabin Interior

---

- 120-V receptacle – port side
- 12-V USB charging ports – port and starboard sides
- 28" flat screen HDTV
- Air conditioner (12,000 BTU)



- Carbon monoxide detector
- Central vacuum system with hose and attachments with dedicated storage
- Console side windows with (2) opening port lights with shades
- Convertible double berth with filler cushion; comes with fitted sheet, comforter and two regular size pillowcases
- Convertible pull-out settee
- Digital vessel control; iPad with inductive charging case, CZone App
- Easy to clean interior materials
- Hanging locker
- Hardwood cabin sole
- Hull side windows with shades
- Lighting – LED diffused courtesy lights (blue)
- Lighting – LED diffused overhead lights (white)
- Lighting – LED reading lights (2)
- Rod storage (4)
- Skylight with integrated shade system
- Stereo includes the following: (FUSION® integration into Raymarine with Navigation Package)
- FUSION® stereo DVD/CD/AMFM/VHF, USB AUX input iPod / iPhone / Android compatible via integrated Bluetooth Sirius XM option ready Stereo remote controls – helm and bow MP3/Aux input
- JL Audio waterproof speakers – exterior, 7.7”aft cockpit (2), helm deck (4), bow (2),
- 10” subwoofer, helm deck (2)
- JL Audio amplifiers (2)
- JL Audio speakers – interior, 6.5” cabin (4)
- Table – wood table that lowers to support filler cushion for forward double berth
- Throw pillows (3)

## Galley

---

- 120-V receptacle
- 12-V receptacle
- Dedicated dish storage in pull-out drawer below sink and in a cabinet above the sink
- Microwave
- Pull-out waste receptacle
- Rail – hand rail – stainless steel
- Refrigerator/freezer – stainless steel 12–V/120-V (1.7 cubic ft)
- Sink filler – solid surface matching countertop with integral cutting board
- Sink with faucet and solid surface countertop

## Enclosed Head Compartment

---

- Accent wall
- Electric Vacu-Flush® toilet, holding tank with vent filter, overboard discharge, dockside pump-out and tank level indicator
- Enclosed shower – rain shower head with hot and cold faucet and shower curtain providing protection of vanity area
- Flooring – solid surface tile
- Lighting – LED overhead light
- Mirror; full-length
- Opening port light
- Rail – hand rail – stainless steel
- Shower sump
- Solid surface pull-out countertop forward of vanity
- Toilet paper holder
- Vanity storage
- Vanity with sink, polished chrome faucet and backlit mirror

## Mechanical

---

- 300 L6 DTS quad Mercury® Verado Four Stroke engines with power steering and Shadow Mode Technology
- ACR spotlight (premium)
- Advanced battery management system; in cabin electric switches and charging relays with remote paralleling
- Air conditioner (cabin) (12,000 BTU) reverse cycle
- Air conditioner (helm deck) (12,000 BTU) reverse cycle
- Battery trays (7)
- Bilge pump – high water bilge pump with alarm (2,000 GPH)
- Bilge pumps – automatic (1,100 GPH forward, 2,000 GPH aft)
- Bonding system for underwater through hull fittings
- Bow thruster (6 kW) with dedicated battery bank and charging system (not available with Joystick Piloting)
- Dockside cable TV inlet
- Dual 30-amp shore power inlets with battery chargers, isolation transformers and 50' shore power cords
- Dual sounder transducer mount area
- Electric dual trumpet horn
- Electric trim tabs with indicator (auto glide, dynamic running surface, dual ram)
- Engine fuel / water separators (4)
- Freshwater anchor washdown with integrated coiled hose system
- Freshwater hot and cold water system with dockside hookup and tank level indicator integrated into
- VesselView
- Freshwater pull-out hot and cold transom shower

- Freshwater system with 60-gallon tank
- Freshwater washdown hot and cold retractable hose reel at mid-ship
- Fuel tanks – dual 300-gallon aluminum fuel tanks
- Generator – low CO gas (10 kW) 120-V 60 Hz with fire suppression system, automatic with manual override
- Lighting – LED cockpit and machinery space lighting
- Manifold plumbing system with individual valve per circuit
- Raw-water washdown with retractable hose reel at mid-ship
- Stainless steel propellers
- Thru hulls – cast bronze thru hulls (below waterline)
- Thru hulls – cast stainless steel thru hulls (above waterline)
- Water heater

## Исключения

---

При продаже яхты исключаются личные вещи владельца.

## Отказ от ответственности

---

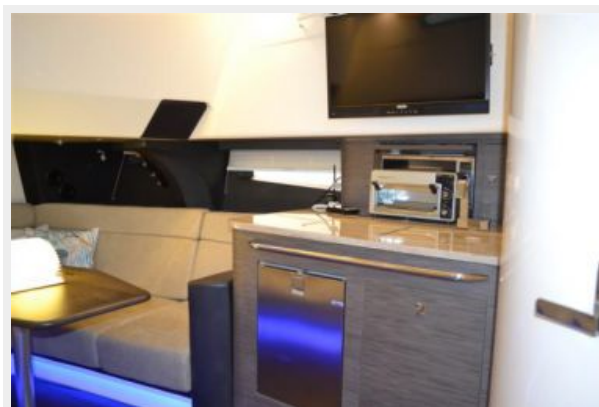
Компания предоставляет описание судна или яхты добросовестно, но не может гарантировать точность этой информации, а также не ручается за техническое состояние. Покупатель должен проинструктировать своих агентов или оценщиков исследовать представленную информацию более подробно, по собственному желанию. Продажа судна или яхты, изменение цены или снятие с продажи будет происходить без предварительного уведомления.

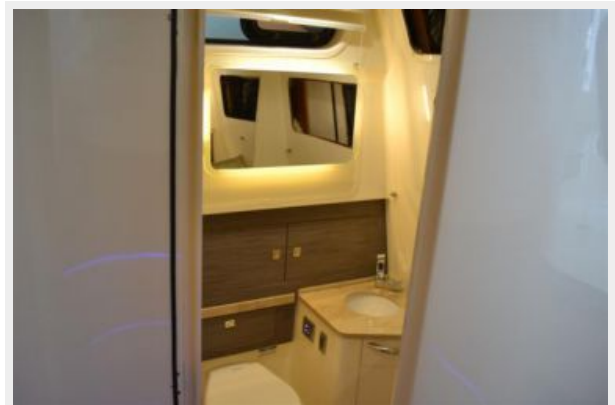
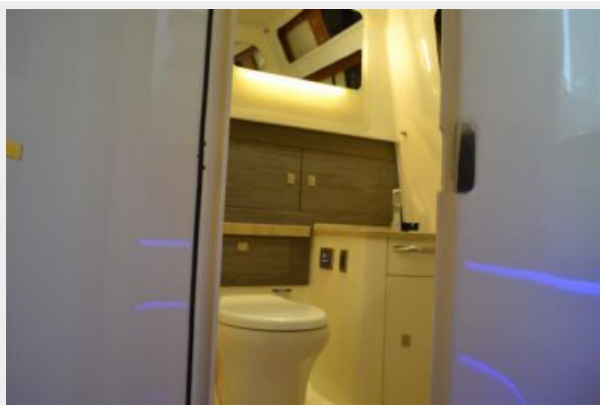
# ФОТОГРАФИИ



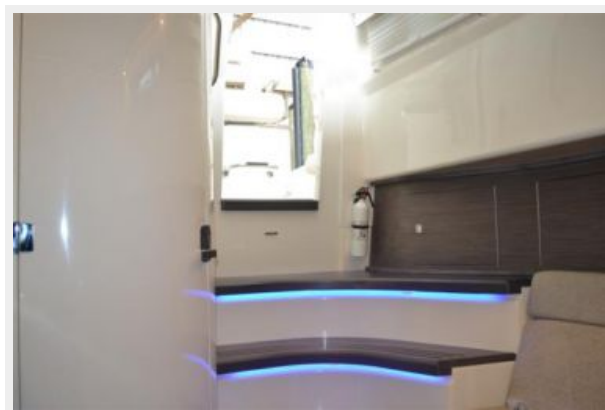
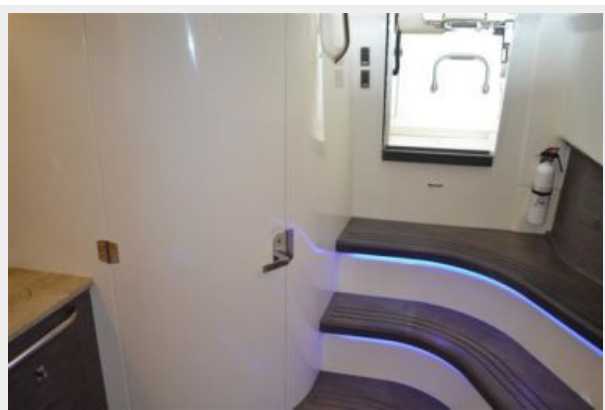












# КОНТАКТЫ

---

Андрей Шестаков (Andrey Shestakov) – ведущий яхтенный брокер отдела продаж яхт и судов компании Shestakov Yacht Sales Inc. Официальный представитель Shestakov Yacht Sales Inc. для русскоговорящих клиентов в центральном офисе компании в Майами/Форт Лодердейл/Флорида/США.

## Контактная информация

---

Email: [andrey@shestakovyachtsales.com](mailto:andrey@shestakovyachtsales.com)

Web: [shestakovyachtsales.com](http://shestakovyachtsales.com)

## Телефоны

---

Краснодарский край: **+7(918)465-66-44**

США, Майами, Флорида: **+1(954)274-4435**

## Время работы

---

Понедельник – Суббота: **9:00 - 21:00**  
EDT

Воскресенье: **Закрето**

## Адрес

---



Harbour Towne Marina, 850 NE 3rd St,  
STE 213, Dania, FL 33004