

## SOO TOO — FERRETTI



**Builder:** FERRETTI

**Year Built:** 2012

**Model:** Motor Yacht

**Price:** PRICE ON APPLICATION

**Location:** United States

**LOA:** 69' 2" (21.08m)

**Beam:** 18' 2" (5.54m)

**Min Draft:** 5' 6" (1.68m)

**Max Draft:** 5' 7" (1.70m)

**Cruise Speed:** 30 Kts. (35 MPH)

**Max Speed:** 33 Kts. (38 MPH)

Our experienced yacht broker, Andrey Shestakov, will help you choose and buy a yacht that best suits your needs **SOO TOO — FERRETTI** from our catalogue. Presently, at Shestakov Yacht Sales Inc., we have a wide variety of yachts available on our sale's list. We also work in close contact with all the big yacht manufacturers from all over the world.

If you would like to buy a yacht **SOO TOO — FERRETTI** or would like help answering any questions concerning purchasing, selling or chartering a yacht, please call **+1(954)274-4435**

# TABLE OF CONTENTS

TABLE OF CONTENTS	2
SPECIFICATIONS	5
Overview	5
Basic Information	5
Dimensions	5
Speed, Capacities and Weight	5
Accommodations	6
Hull and Deck Information	6
Engine Information	6
DETAILED INFORMATION	7
Overview	7
Vessel Walkthrough	7
Galley	9
Salon/Dining Area	9
Electronics & Navigation Equipment	10
Master Stateroom	10
Master Bathroom	11
Guest Stateroom Starboard	11
Guest Stateroom Port	12
Guest/Day Bathroom	12
VIP Guest Stateroom	12
VIP Guest Bathroom	12
Crew Quarters	13
Deck Equipment	13
Engine Room & Mechanical Equipment	15
Electrical System & Equipment	15
Exclusions	16
Disclaimer	16

PHOTOS	17
Port Bow Running	17
Starboard Bow Running	17
Bow Running	17
Overhead Running	17
Running Starboard Profile	17
Stern Running	17
Galley	18
Aft Deck Galley Pass Thru	18
Beverage Refrigerator	18
Galley	18
Salon Starboard Settee	19
Salon Forward	19
Dining Area	19
Lower Helm Station	19
Desk	19
MasterStateroom	19
Master Stateroom Forward	20
MasterStateroom	20
Master Closet	20
Master Bathroom	20
Starboard Guest Stateroom	20
Master Bathroom	20
Guest/Day Bath	21
Port Guest Stateroom	21
VIP Guest Stateroom	21
VIP Guest Stateroom Forward	21
VIP Guest Bathroom	21
Flybridge	21

Flybridge	22
Flybridge Helm	22
Foredeck	22
Starboard Side Deck	22
Hydraulic Swim Step	22
Passerelle	22
Tender Davit System	23
Passerelle Extended	23
Engine Room	23
Profile	23
Upper Deck	23
Main Deck	23
Lower Deck	24
CONTACTS	25
Contact details	25
Telephones	25
Office hours	25
Address	25

# SPECIFICATIONS

## Overview

- **ZERO SPEED GYRO STABILIZER**
- **1268 HP COMMON RAIL MTU's**
- **UPGRADED TROPICAL AIR CONDITIONING**
- **WATERMAKER and MORE!**

## Basic Information

**Category:** Motor Yacht

**Sub Category:** Flybridge

**Model Year:** 2013

**Year Built:** 2012

**Country:** United States

**Vessel Top:** Bimini Top

**Fly Bridge:** Yes

**Cockpit:** Yes

## Dimensions

**LOA:** 69' 2" (21.08m)

**LWL:** 57' 1" (17.40m)

**Beam:** 18' 2" (5.54m)

**Min Draft:** 5' 6" (1.68m)

**Max Draft:** 5' 7" (1.70m)

**Clearance:** 19' 0" (5.79m)

**MFG Length:** 69' 0" (21.03m)

## Speed, Capacities and Weight

**Cruise Speed:** 30 Kts. (35 MPH)

**Cruise Speed Range:** 300

**Max Speed:** 33 Kts. (38 MPH)

**Max Speed RPM:** 2450 Kts.

**Displacement:** 93035 Pounds

**Water Capacity:** 262 Gallons

**Holding Tank:** 90 Gallons

**Fuel Capacity:** 977 Gallons

## Accommodations

Total Cabins: 4	Total Berths: 6
Sleeps: 8	Total Heads: 3
Crew Cabin: 1	Crew Berths: 2
Crew Sleeps: 2	Crew Heads: 1

## Hull and Deck Information

Hull Material: Fiberglass	Deck Material: Teak and Fiberglass
Hull Configuration: Modified V-Hull	Hull Color: White
Hull Designer: Advanced Yacht Technology	Exterior Designer: Studio Zuccon International Project
Interior Designer: Studio Zuccon International Project	

## Engine Information

Engines: 2	Manufacturer: MTU
Model: 8V 2000 M94	Engine Type: Inboard
Fuel Type: Diesel	

---

# DETAILED INFORMATION

---

## Overview

---

This lightly used Ferretti 690 is in like new condition. Her equipment list includes a Mitsubishi Anti Rolling Gyro stabilizer system, an A/SEA Power Systems shore power converter, watermaker, jet tender, bow & stern thrusters, second generator and more!

Featuring a large open salon, four staterooms plus crew's quarters, sleek exterior lines and jaw dropping performance, the 690 may be the perfect blend of form and function. Her 1268 m.h.p. MTU's with common rail fuel injection provide a comfortable and quiet 30+ knot cruise. Ferretti has gone to great lengths and added innovative features to make this yacht driver-friendly. An example is an electric differential steering system which independently varies the angle of each rudder, preventing the yacht from heeling too steeply into a turn. And the list goes on.

The interior is finished in oak wood combined with neutral fabrics which creates a textured effect and an overall impression of light airiness and casual elegance.

**This is a unique offering, priced MILLIONS UNDER REPLACEMENT. She is fully serviced and ready to cruise. An opportunity not to be missed!**

## Vessel Walkthrough

---

Beginning aft, boarding the vessel from the stern, there is a hydraulic swim step just aft of the swim platform that lowers to create a surface below the water for swimming or diving. Launching the tender is also made easier by lowering the platform. The tender is stored on the swim platform just forward of the swim step. Another innovative feature is the tender davit is housed in a dedicated compartment with an electric opening hatch at the top of the transom. A teak and stainless Besenzone boarding gangway/passerelle retracts into a hatch above the boarding stairs from the platform to port. A stainless steel gate is located at the top of the stairs for safety, along with the controls for the passerelle, davit compartment, lazarette hatch and swim step.

The aft deck, side decks, and foredeck are laid teak over fiberglass. There is a cushioned bench seat at the transom with a rectangular teak dining table forward and folding deck chairs providing seating for eight. Engine room access is located through a large deck hatch forward of the table. Port and starboard, aft are compartments with hinged lids that contain stern cleats, wells for lines, and a sink with hot and cold pressure water. An aft deck docking station is located on the starboard pilaster for ease of docking. The aft salon bulkhead contains a stainless framed sliding glass door, with a pop up window to open the galley to the aft deck to port. Below the window is a cabinet with a removable teak serving tray on top, and an ice maker beneath. A door leading to crew's quarters is to starboard..

Moving up to the bow, there is an anchor roller system with double opening anchor lockers which

conceal the all chain rode, and storage for docklines and fenders. There is a Quick windlass on deck. Stainless railings, cleats, and stanchions line the decks. A Bomar opening hatch is located on the foredeck, and a large sunpad with cover is aft. Windshield and side windows are tinted glass, with Textilene covers. There are opening boarding gates on the side decks, and high bulwarks for safety while transiting decks. A pantograph water tight opening door for access to salon and lower helm is located on the starboard side. There is a storage locker located in the port aft section of the house for cleaning supplies, and a fuel fill locker to starboard.

Continuing up to the flybridge from the port side aft deck stairway, all the way forward is a large cushioned sun pad beneath the plexiglas windscreen. To starboard is the helm station with pop up dash and helm bench seating for three. Opposite to port is additional seating. Behind the helm station is a large cushioned U shaped settee surrounding a dining/cocktail table. A molded fiberglass cabinet containing an electric barbecue grill, sink and refrigerator is opposite to port. Aft, is a radar mast mounted on centerline and KVH domes which are mounted in recessed wells, port and starboard.

Entering the lower main salon area from the aft deck, to starboard is oak wood storage cabinetry containing the audio video components, and a slide out refrigerator drawer. The counter tops are covered in hand stitched off white leather, and wall coverings are beige. The salon soles are done in stained oak laminate. Opposite to port is the fully appointed galley with a pop up window that opens up to the aft deck for passing food and drinks to the outside dining table. The galley can also be closed from the salon with sliding screens and a sliding door.

One step up to the upper salon area, there is a leather upholstered settee to port with an expandable glass dining table and chairs. Another leather upholstered settee is to starboard. with a glass coffee table. Decorative throw pillows accent the settee's. The TV is mounted to port just forward of the galley making it visible from all seating positions. Moving forward, the lower helm station is to starboard with a leather helm seat on a cabinet concealing an air handler and antenna equipment beneath. The tinted glass windshield is forward. A watertight pantograph door to starboard allows access to the side deck. Opposite to port is a desk area with leather ottoman, storage cabinet, chart storage and storage drawer.

The four owner and guest staterooms are accessed down a port side curved stairway forward of the desk area. All the way aft is the full beam master stateroom with king size berth. There are port and starboard large hull side windows with two opening portholes on each side for natural light and ventilation. Electric shades and black out shades lower for privacy. A large bathroom with glass enclosed shower is aft of the bed to starboard. A walk-in closet with shelves, mirror and the ship's safe is to port. Moving forward up two steps are the twin berth guest staterooms, port and starboard. Both have independent entertainment systems and large side windows with opening port holes. Just forward on the starboard side is the large guest/day head which is accessible from the companionway or the starboard guest stateroom. The en suite VIP guest stateroom with queen size island berth is all the forward. It also has port and starboard opening portholes and an overhead hatch with a sliding shade.



---

## Galley

---

- Wooden & glass fold-away partition between galley and salon
- Aft awning window w/stainless steel frame to aft deck
- Bosch refrigerator & freezer
- Bosch microwave/convection oven
- Bosch Schott (4) burner ceran cooktop
- Exhaust fan
- Bosch dishwasher
- Moulinex Subito coffee maker
- Quartz resin counter top
- Stainless steel sink w/drain board, hot/cold faucet
- Garbage disposal
- Overhead storage cabinets
- Under counter storage drawers & cabinets w/shelves
- Sliding door to salon
- Laminate sole
- Tableware for 12
- Table cloths
- Place mats
- Venetian mini-blinds

---

## Salon/Dining Area

---

- Aft glass sliding door w/stainless steel frame
- Starboard cabinet w/Frigonautica stainless steel drawer refrigerator
- China cabinet
- Entertainment center
- Bose 3-2-1 GS Series III stereo system
- DSS receiver
- Ipod docking station
- Sharp Aquos 32" LCD/LED thin screen TV
- Leather settee w/loose back cushions, throw pillows, starboard
- Glass cocktail table
- Leather settee w/loose back cushions, port
- Glass dining table w/self-storing leaf
- (3) chrome dining chairs w/leather cushions
- Opening port side window
- Electric Roman style window shades
- (2) table lamps
- Starboard forward side pantograph door
- Starboard forward helm station w/cushioned helm chair
- Port side forward glass top desk w/storage cabinets, drawer, chart compartment & leather

ottoman

---

## Electronics & Navigation Equipment

---

### Lower Helm:

- (2) Simrad NSS12, GPS chartplotters/multifunction 12" displays
- Simrad 4 kW HD digital radar
- Simrad AP24 autopilot
- Simrad IS20 Combi Instrument (boat speed, SOG, distance log, depth)
- Simrad DST800V echosounder
- Simrad IS20 wind instrument display
- Simrad RS82 VHF radio
- Airmar 110 WX weather station
- Livewire FB10 internet access controller
- Rudder angle indicator
- Mitsubishi Anti Roll Gyro controls
- Side-Power 8940G bow & stern thruster controls
- Trim Tab controls w/ Ferretti recommended setting indicator
- ZF electronic engine controls
- Thrane & Thrane Sailor 150 Inmarsat FleetBroadband sat phone, internet terminal
- KVH TracVision M7 satellite television system
- Ferretti systems monitor
- Ferretti fuel per mile consumption meter
- Riviera Urania Genoa compass
- Barigo tide clock, barometer, hygrometer/thermometer

### Flybridge Helm:

- Simrad NSE12 multifunction display
- Simrad AP24 autopilot control head
- Simrad IS20 Combi Instrument
- Simrad RS82 VHF radio
- VDO rudder angle indicator
- Fusion MS-AV600 AM/FM/CD/DVD Ipod ready marine stereo w/speakers
- Side-Power bow & stern thruster controls
- ZF electronic engine controls

---

## Master Stateroom

---

- King size island berth w/pillows, bedspreads, sheets
- Built-in nightstands
- Drawers beneath bed

- Upholstered paneled aft bulkhead
- (2) LED flexible goose neck reading lights
- (2) aft sconce lamps w/shades
- Port side leather settee w/loose back cushions
- (2) cabinets w/(2) drawers each, port side
- Port & starboard hull side windows w/(2) portholes each, electric shades & black out shades
- Walk-in closet w/full length mirror, shelf & safe
- Sharp Aquos 32" LCD/LED thin screen TV
- Fusion MS-AV600 AM/FM/CD/DVD receiver w/Ipod docking station
- DSS receiver
- Starboard side leather top cabinetry w/lift-up dressing table w/mirror, shelf & leather ottoman
- Fitted bound edge carpeted sole

---

## Master Bathroom

- Tecma fresh water electric head
- Stainless steel porthole w/ wooden blinds
- Heated glass towel rack
- Large walk-in shower w/tempered glass door
- Overhead lockers w/shelves
- Corian counter top w/wash basin
- Mirror
- Laminate oak sole

---

## Guest Stateroom Starboard

- Twin berths w/pillows, bedspread & sheets
- Drawers beneath beds
- Built-in nightstand w/drawer
- (2) flexible goose neck LED reading lights
- Hull side window w/(2) stainless steel opening portholes
- Electric opaque shades & black out shades
- Fitted bound edge carpeted sole
- Hanging locker w/full length mirror
- Direct entry to guest bathroom
- Sharp Aquos 19" LCD/LED thin screen TV
- DSS receiver
- Fusion MS-AV600 AM/FM/CD/DVD Ipod ready marine stereo w/speakers

---

## Guest Stateroom Port

---

- Twin berths w/pillows, bedspread & sheets
- Drawers beneath beds
- Built-in nightstand w/drawer
- (2) flexible goose neck LED reading lights
- Hull side window w/(2) stainless steel opening portholes
- Electric opaque shades & black out shades
- Fitted bound edge carpeted sole
- Hanging locker w/full length mirror
- Sharp Aquos 19" LCD/LED thin screen TV
- DSS receiver
- Fusion MS-AV600 AM/FM/CD/DVD Ipod ready marine stereo w/speakers

---

## Guest/Day Bathroom

---

- Tecma fresh water electric head
- Stainless steel porthole w/ wooden blinds
- Shower w/tempered glass sliding door
- Overhead lockers w/shelves
- Corian counter top w/wash basin
- Mirror
- Laminate oak sole

---

## VIP Guest Stateroom

---

- Queen size island berth w/bedspread, pillows, sheets, & drawers beneath
- Upholstered paneled headboard
- Built-in nightstands
- (2) flexible goose neck LED reading lights
- Hull side windows w/stainless steel opening portholes
- Electric opaque shades & black out shades
- Overhead hatch w/shade & screen
- Sharp Aquos 19" LCD/LED TV
- DSS receiver
- Fusion MS-AV600 AM/FM/CD/DVD Ipod ready marine stereo w/speakers
- Fitted bound edge carpeted sole
- Port side hanging locker w/full length mirror
- Starboard side locker w/shelves

---

## VIP Guest Bathroom

---

- Tecma fresh water electric head
- Stainless steel porthole w/ wooden blinds
- Shower w/sliding tempered glass door
- Overhead lockers w/shelves
- Corian counter top w/wash basin
- Mirror
- Laminate oak sole

## Crew Quarters

---

- Upper & Lower berths w/pillows & bedspreads
- Bedside cabinet/closet
- Sharp Aquos 19" LCD/LED TV
- DSS receiver
- Stainless steel openable porthole
- Hanging locker
- Fitted bound edge carpeted sole
- Bosch refrigerator
- Hoover combination washer/dryer
- En Suite head w/Tecma electric fresh water head, stainless steel porthole, mirror, sink & vanity, storage cabinets, laminate wood sole

## Deck Equipment

---

### General:

- Avon Seasport Jet 330 tender w/98 HP 4-stroke jet engine
- Custom chocks on swim platform for tender storage
- Telescopic electro-hydraulic davit (875 lb capacity) hidden in upper stern compartment
- Besenzoni stainless steel & teak gangway (passerelle) w/remote controls & automatic stanchions
- Hydraulic swim step/platform w/foldaway ladder
- Hand-held hot/cold shower on swim platform
- Teak over fiberglass decks
- Stainless steel handrails & stanchions
- Stainless steel deck hardware
- (2) windshield wipers w/washers
- Textilene mesh windshield cover
- Remote Sanshin 50W xenon searchlight
- International LED navigation lights
- (6) cylindrical fenders, (2) ball fenders
- Mooring lines

**Foredeck:**

- 30 kg Bruce galvanized anchor w/250' 1/2" chain
- Stainless steel anchor roller
- Quick 24V windlass w/foot controls
- Raw water washdown for anchor chain
- Stainless steel bow rail & stanchions
- Cushioned sun lounge pad on cabin top w/canvas cover
- (2) Deck hatches

**Aft Deck:**

- Teak aft deck table w/self storing leaf
- Stern cushioned bench seat w/storage beneath
- (4) folding deck chairs
- Port & starboard mooring stations w/hinged fiberglass covers
- Overhead recessed lighting
- Isotherm icemaker
- Port side cabinet w/removable teak top & storage below
- Stainless steel framed awning lift-up window for galley access
- Engine room access hatch
- Molded fiberglass stairway w/teak steps & stainless steel handrail to flybridge
- Access door to stairwell down to crew's quarters
- Starboard aft deck control station
- Aft Textilene mesh roll-up shade
- Port side aft stainless steel gate to step down access to swim platform

**Flybridge:**

- Plexiglass Venturi wrap-around windshield
- Forward sun lounge pad w/cushions
- Starboard side helm station w/electric pop-up instrument board, stainless steel wheel
- Helm bench seat w/cushion
- Fiberglass non-skid deck
- Bimini top w/stainless steel frame
- (2) Arimar six person life rafts
- Wet bar w/hinged lid, molded sink, spray head on hose & faucet w/storage below
- Gaggenau VR421 electric barbecue grill
- Isotherm CR50 refrigerator/freezer
- U-shaped cushioned settee w/storage beneath
- Pedestal mounted table
- Covers for helm console, helm bench seat, settee, bar cabinet
- Fiberglass radar arch w/antennas, recessed led lights & signal mast
- (2) KVH satellite antenna domes in molded fiberglass wells, port & starboard
- LED courtesy lights

---

## Engine Room & Mechanical Equipment

---

- Twin MTU 8V 2000 M94 1268 mhp Common Rail diesel engines
- ZF 665V V drive transmissions w/ 2.517:1 reduction gear ratios
- ZF Mathers electronic controls
- MTU electronic engine control boxes
- Dual Racor 1000 primary fuel filters each engine
- (2) Racor 500 fuel filters, one for each generator
- Mitsubishi MSM-4000 Anti Rolling Gyro
- Side-Power 24V, 13 HP bow & stern thrusters
- Electric independent rudder power steering system
- (3) Condaria PCWM/FCL 3 chilled water air conditioning compressors, 90,000 BTU's w/ Condaria Chiller Organizer
- Idromar 800 gpd watermaker
- Ariston 13 gallon hot water heater
- Dripless shaft seals
- (4) electric automatic bilge pumps
- High water alarm
- (2) 24V fresh water pressure pumps
- Grey water pump
- Black water pump
- Multipurpose 24V pump to manifold (bilge, grey water, black water)
- Tecma marine sanitation system
- Sea Fire FM200, 23.6 kg cylinder automatic fire suppression system w/manual pulls
- (3) electric/hydraulic packs (trim tabs, tender lift, passarelle)
- Electric air compressor
- Engine room blowers
- Engine room fresh water outlet

---

## Electrical System & Equipment

---

- Cummins Onan QD, 19 kW generator @1500 rpm w/705 hours
- Cummins Onan QD 9.5 kW generator @ 1800 rpm w/638 hours
- ASEA Power Systems AC18, 18kVA shore power converter
- 115V/230V AC electrical system
- 100 amp 60 Hz shore power hook up w/75' cord
- Charles Smart Y adapter, 100 amp to (2) 50 amp 125/250V plugs
- 12V/24V DC electrical system
- 24V battery bank for domestic load
- 24V battery bank for engine starting
- Battery disconnect switches, mechanical and electronic
- (4) AGM batteries for thrusters
- Mastervolt 24V, 2.5 kW/60 amp inverter/charger, house batteries

- Mastervolt 24V, 75 amp battery charger, engine batteries
- Mastervolt 24V, 1500 watt inverter for galley refrigerator
- Vimar switches & outlets throughout
- (2) LED underwater lights
- LED lighting throughout
- Central bonding system

## Exclusions

---

Owner's personal belongings.

## Disclaimer

---

The Company offers the details of this vessel or yacht in good faith but cannot guarantee or warrant the accuracy of this information nor warrant the condition of the vessel. A buyer should instruct his representatives, agents, or his surveyors, to investigate such details as the buyer desires validated. This vessel or yacht is offered subject to prior sale, price change, or withdrawal without notice.



# PHOTOS

## Port Bow Running



## Starboard Bow Running



## Bow Running



## Overhead Running



## Running Starboard Profile



## Stern Running



**Aft Deck Galley Pass Thru**



**Galley**



**Galley**



**Beverage Refrigerator**



**Salon Forward**



**Salon Starboard Settee**



**Dining Area**



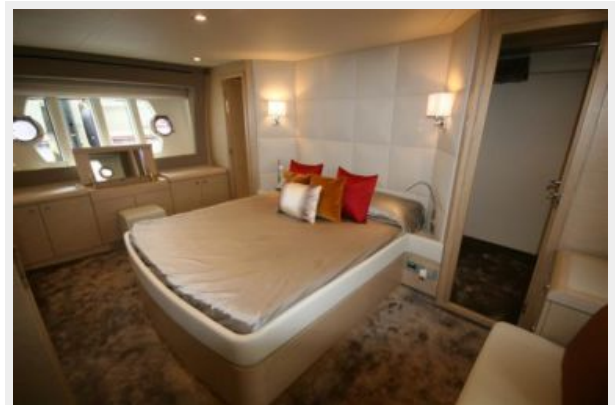
**Lower Helm Station**



**Desk**



**MasterStateroom**





**Master Stateroom Forward**



**Master Stateroom**



**Master Closet**



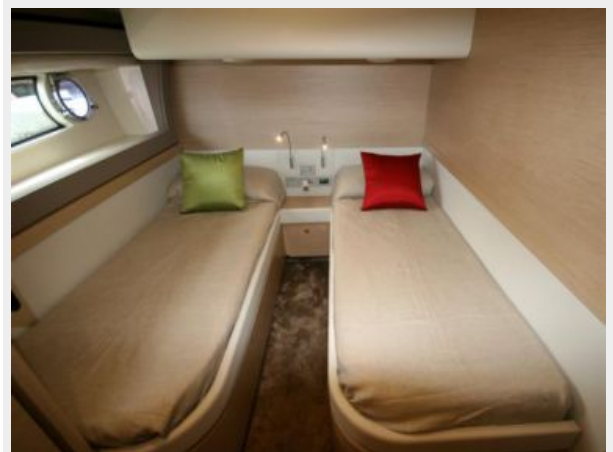
**Master Bathroom**



**Master Bathroom**



**Starboard Guest Stateroom**



**Guest/Day Bath**



**Port Guest Stateroom**



**VIP Guest Stateroom**



**VIP Guest Stateroom Forward**



**VIP Guest Bathroom**



**Flybridge**



**Flybridge Helm**



**Flybridge**



**Foredeck**



**Starboard Side Deck**



**Hydraulic Swim Step**



**Passerelle**





**Passerelle Extended**



**Tender Davit System**



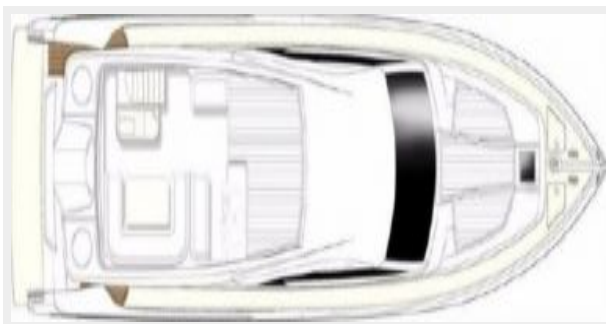
**Engine Room**



**Profile**



**Upper Deck**



**Main Deck**



## Lower Deck





# CONTACTS

---

Andrey Shestakov, leading yacht broker of the sales department of Shestakov Yacht Sales Inc. Shestakov Yacht Sales Inc., the official representative of the Miami/Fort Lauderdale FL headquarters.

## Contact details

---

Email: **andrey@shestakovyachtsales.com**

Web: [shestakovyachtsales.com/en/](http://shestakovyachtsales.com/en/)

## Telephones

---

USA: **+1(954)274-4435**

## Office hours

---

Monday – Saturday: **9:00 - 21:00 EDT**

Sunday: **closed**

## Address

---



Harbour Towne Marina, 850 NE 3rd St,  
STE 213, Dania, FL 33004