

MOONDANCE — MAINSHIP



Судостроитель: MAINSHIP

Год постройки: 2001

Модель: Траулер

Цена: **ЦЕНА ЯХТЫ ПО ЗАПРОСУ**

Местонахождение: United States

Длина общая: 43' 0" (13.11m)

Ширина: 15' 5" (4.70m)

Мин. осадка: 3' 5" (1.04m)

Макс. осадка: 3' 10" (1.17m)

Крейс. скорость: 9 Kts. (10 MPH)

Макс. скорость: 15 Kts. (17 MPH)

Купить **Moondance — MAINSHIP** а также выбрать подходящую вам яхту из нашего каталога яхт вам поможет опытный яхтенный брокер Андрей Шестаков. На сегодняшний день компания **Shestakov Yacht Sales Inc.** имеет большое количество яхт в собственном списке продаж, а также тесно сотрудничает со всеми крупными яхтенными производителями по всему миру.

Для того чтобы купить яхту **Moondance — MAINSHIP** а также проконсультироваться по любому вопросу связанному с покупкой, продажей, чартером яхт позвоните по телефону **+7(918)465-66-44**.

ОГЛАВЛЕНИЕ

ОГЛАВЛЕНИЕ	2
ХАРАКТЕРИСТИКИ	6
Обзор	6
Основная информация	6
Размеры	6
Скорость, вместимость и масса	6
Размещение	7
Корпус и палуба	7
Информация о двигателе	7
ПОДРОБНОЕ ОПИСАНИЕ	8
43' Mainship Overview	8
43' Mainship Vessel Walkthrough	8
43' Mainship Accommodations	8
43' Mainship Salon	8
43' Mainship Galley	8
43' Mainship Dining	9
43' Mainship Master Stateroom	9
43' Mainship Forward Guest Stateroom	9
43' Mainship Port Guest Stateroom	9
43' Mainship Lower Helm	9
43' Mainship Laundry	10
43' Mainship Flybridge	10
43' Mainship Trunk Cabin	10
43' Mainship Cockpit	10
43' Mainship Audio/Visual Equipment	10
43' Mainship Electronics	10
43' Mainship Electrical System	11
43' Mainship Engine/Mechanical System	11

43' Mainship Deck Equipment	12
43' Mainship Safety & Fire Protection	13
43' Mainship Exclusions	13
43' Mainship Disclaimer	14
Исключения	14
Отказ от ответственности	14
ФОТОГРАФИИ	15
43' Mainship starboard forward profile photo1	15
43' Mainship starboard forward profile photo2	15
43' Mainship port forward profile	15
43' Mainship port aft profile	15
43' Mainship aft profile	16
43' Mainship forward profile	16
43' Mainship anchor windlass	16
43' Mainship at anchor	16
43' Mainship foredeck	17
43' Mainship foredeck aft	17
43' Mainship port side deck photo1	17
43' Mainship port side deck photo2	17
43' Mainship starboard side deck photo1	18
43' Mainship starboard side deck photo2	18
43' Mainship flybridge forward	18
43' Mainship flybridge aft	18
43' Mainship flybridge port	18
43' Mainship flybridge starboard	18
43' Mainship flybridge helm	19
43' Mainship flybridge helmseat	19
43' Mainship flybridge port seating photo1	19
43' Mainship flybridge port seating photo2	19

43' Mainship flybridge starboard seating	19
43' Mainship trunk cabin	19
43' Mainship cockpit	20
43' Mainship cockpit port	20
43' Mainship cockpit starboard	20
43' Mainship swimplatform	20
43' Mainship salon forward	20
43' Mainship salon aft	20
43' Mainship salon port	21
43' Mainship salon starboard	21
43' Mainship salon desk	21
43' Mainship salon port seating	21
43' Mainship galley photo1	21
43' Mainship galley photo2	21
43' Mainship lower helm photo2	22
43' Mainship lower helm photo1	22
43' Mainship master stateroom	22
43' Mainship master stateroom port	22
43' Mainship master stateroom starboard	22
43' Mainship master stateroom forward	22
43' Mainship master stateroom head	23
43' Mainship master stateroom aft	23
43' Mainship master stateroom shower	23
43' Mainship forward guest stateroom	23
43' Mainship forward guest stateroom starboard	24
43' Mainship forward guest stateroom port	24
43' Mainship guest head	24
43' Mainship port guest stateroom	24
43' Mainship washer-dryer	25

43' Mainship guest shower	25
43' Mainship engine room forward	25
43' Mainship engine room aft	25
43' Mainship port Racor fuel filter	26
43' Mainship port main engine	26
43' Mainship starboard Racor fuel filter	26
43' Mainship starboard main engine	26
43' Mainship oil change system	27
43' Mainship electrical panel	27
43' Mainship generator	27
43' Mainship inverter	27
43' Mainship battery isolator	27
43' Mainship battery charger	27
43' Mainship layout	28
КОНТАКТЫ	29
Контактная информация	29
Телефоны	29
Время работы	29
Адрес	29

ХАРАКТЕРИСТИКИ

Обзор

Mondance is a very well-maintained 2001 43' Mainship aft cabin trawler offering a 3 stateroom, 2 head layout, twin Yanmar 300 hp main engines, Freedom Lift hydraulic tender davit system and new galley equipment and inverter. She just completed the Great Loop, so she's ready to keep cruising with new owners.

Основная информация

Тип судна: Траулер

Подкатегория: Aft Cabin

Модельный год: 2001

Год постройки: 2001

Страна: United States

Регистрационный номер:
MPTSM045K001

Верх: Bimini Top

Открытая палуба мостика: Да

Кубрик: Да

Размеры

Длина общая: 43' 0" (13.11m)

Ширина: 15' 5" (4.70m)

Мин. осадка: 3' 5" (1.04m)

Макс. осадка: 3' 10" (1.17m)

Трапы: 18' 0" (5.49m)

Скорость, вместимость и масса

Крейс. скорость: 9 Kts. (10 MPH)

Макс. скорость: 15 Kts. (17 MPH)

Водоизмещение: 36000 Pounds

Вместимость воды: 250 Gallons

Вместимость сточного бака: 82 Gallons **Объем топливного бака:** 500 Gallons

Размещение

Всего кают: 3

Всего коек: 5

Спальные места: 6

Всего ком. состава: 2

Корпус и палуба

Материал корпуса: Fiberglass

Материал палубы: Composite Fiberglass

Комплектация корпуса: Modified V-Hull

Цвет корпуса: White

Отделка корпуса: Aluminum

Информация о двигателе

Двигатели: 2

Производитель: Yanmar

Модель: 6LP-STE-97

Тип двигателя: Inboard

Тип топлива: Diesel

ПОДРОБНОЕ ОПИСАНИЕ

43' Mainship Overview

Moondance is a very well-maintained 2001 43' Mainship aft cabin trawler offering a 3 stateroom, 2 head layout, twin Yanmar 300 hp main engines, Freedom Lift hydraulic tender davit system and new galley equipment and inverter. She just completed the Great Loop, so she's ready to keep cruising with new owners.

43' Mainship Vessel Walkthrough

Entering the boat from the swimplatform, you walk through the transom door into the cockpit and then walk onto either side deck or step down into the master stateroom through the private access door. From either side deck, you can step up onto the trunk cabin and then step up to the flybridge or walk further forward and walk into the salon. From port, you walk into the galley forward and find a U-shaped settee port aft, a desk starboard aft, a lounge chair and entertainment center to starboard and the lower helm starboard forward. Forward there is a bow guest stateroom and one to port and the guest head is to starboard. The master stateroom is aft and is accessed from the salon or cockpit. The engine room is accessed through a salon sole hatch or forward through a lift-up door.

43' Mainship Accommodations

Moondance offers a full beam master stateroom aft with an ensuite head with enclosed shower, a guest stateroom forward with a v-berth, a guest stateroom to port with side by side berths and a guest head with enclosed shower to starboard.

43' Mainship Salon

The salon offers a built-in U-shaped settee and hi/lo folding table to port, a desk starboard aft and lounge chair, entertainment center and book shelf to starboard. There is a door to the sundeck aft and side deck access doors on each side forward. The sole is teak & holly. The large side windows keep this area very light and airy.

43' Mainship Galley

The galley is located port forward in the salon.

- Princess Euro-Kera ceramic 3-burner electric cooktop (2012)
- Contour convection/microwave oven (2012)

- Black & Decker toaster oven
- U-Line under counter refrigerator (2009)
- Freezer under the helm seat
- Double stainless steel sinks with a filtered water faucet
- Storage cabinets and doors
- Corian countertop
- Side deck access door
- Teak & Holly sole

43' Mainship Dining

Dining space is available at the salon settee and table and the flybridge port seating and table.

43' Mainship Master Stateroom

The aft master stateroom offers a queen size berth, hanging locker, storage drawers and cabinets, an aft entrance from the cockpit, carpet, 4 portlights, curtains, nightstands, reading lights, fan and an ensuite head with enclosed shower.

43' Mainship Forward Guest Stateroom

The forward guest stateroom offers a v-berth, 3 portlights, overhead hatch with screen, carpet, 2 hanging lockers, shelves and storage drawers. The guest head is starboard aft of this stateroom.

43' Mainship Port Guest Stateroom

The port guest stateroom offers side by side berths, reading lights, hanging locker, book shelf, overhead hatch, portlight and carpet. The guest head is to starboard.

43' Mainship Lower Helm

The lower helm is starboard forward in the salon and offers a full helm, side deck access door and helm benchseat.

43' Mainship Laundry

- Spendide 2000 combo washer/dryer

43' Mainship Flybridge

The flybridge offers a bimini top, Eisenglass enclosure, helm benchseat, built-in L-shaped seating (with storage underneath) and table to port, built-in seating to starboard with storage underneath and nonskid deck.

43' Mainship Trunk Cabin

The sundeck offers aluminum rails, deck chairs, non-skid deck, deck storage box, outboard storage bracket, molded-in steps to each side deck, molded-in steps to the flybridge and sliding door to the salon.

43' Mainship Cockpit

The cockpit offers a transom door to the fiberglass swimplatform, access to each side deck, lazarette access, non-skid deck, dock water connection, hot/cold fresh water shower and shore power connections.

43' Mainship Audio/Visual Equipment

- Seawatch HDTV antenna
- Insignia flat screen TV in the salon
- Alpine CDE-SXM445-BT stereo/CD/sat ready player in the salon (2015)
- Alpine surround sound speakers (2015)

43' Mainship Electronics

- Raymarine HD 4 kW Radar (2010)
- Raymarine 500 AIS transceiver (2009)
- Ritchie magnetic compass at both helms
- Raymarine C90 multi-function display at each helm with XM weather service (2010)

- Raymarine P70R autopilot (2014) and Raytheon RayPilot RP650 autopilot slave on the flybridge and a Smart Pilot remote at the lower helm
- Raytheon ST60 Tridata display on the flybridge and ST60 Multi display at the lower helm
- Uniden ES UM525 VHF on the flybridge and a wireless remote at the lower helm
- Raytheon Ray 45 VHF at the lower helm
- Weems & Plath ship's clock, barometer and hygrometer
- Aft docking camera (2013)
- Digital cell phone signal booster

43' Mainship Electrical System

- Kohler 8EOZ 8 kW generator with approximately 4,338.5 hours (4,000 hour service completed in 2015)
- Mastervolt Mass Combi 12/2500-100 inverter
- Charles IMC battery charger
- ProMariner ProCharge 130-2-4 battery isolator
- Perko battery switches
- 2 X Lifeline AGM GPL-8DA main engine start batteries (2013)
- 2 X Lifeline AGM GPL-8DA inverter batteries (2014)
- Group 24 generator start battery (2014)
- Denso alternators
- 50 amp shore cord
- Shore power connections fore and aft
- 12vdc outlet on the flybridge

43' Mainship Engine/Mechanical System

- Twin Yanmar 6LP-STE-97 300 hp main engines with approximately 3,212 hours
- ZF Hurth gearboxes

- Teleflex engine controls
- Glendinning synchronizer
- VDO gauges
- Racor 1000 MA fuel filters with vacuum gauges
- Oil-X-Changer oil change system
- Capilano steering system
- Bennett trim tabs
- Marine Air Systems reverse cycle air conditioning/heating system (Salon unit new in 2010 and master stateroom unit new in 2012)
- Seaward 20 gallon water heater
- Central vacuum system
- Jabsco electric heads
- Tankwatch 4 holding tank level monitoring system
- Maintenance logs

43' Mainship Deck Equipment

- Lewmar anchor windlass with foot controls and remote controls at each helm (2014)
- Delta anchor
- 200' 5/16" anchor chain and 200' 9/16" nylon anchor rode
- Pulpit with stainless steel anchor roller
- Aluminum rails
- Stainless steel deck hardware
- Non-skid decks
- Windshield cover
- Spreader lights
- Boarding gates each side aft

- Boarding ladder
- 8 rod holders
- Fiberglass swimplatform with stainless steel pop-up cleats
- Aluminum swim ladder
- Freedom Lift hydraulic tender davit system
- Dock water connection
- Washdown
- Hot/cold fresh water shower aft
- Built-in swimplatform storage box
- Deck storage box on the trunk cabin

43' Mainship Safety & Fire Protection

- Sea-Fire Halon 1301 engine room fire suppression system
- Sea-Fire emergency engine shut down system
- Fire extinguishers
- GoLight searchlight
- Rule bilge pumps
- Bilge high water alarms
- Nighthawk smoke and carbon monoxide detectors
- ACR EPIRB
- Aft security camera (2013)
- Kahlenberg air horn

43' Mainship Exclusions

- Sellers' personal belongings

43' Mainship Disclaimer

The Company offers the details of this vessel in good faith but cannot guarantee or warrant the accuracy of this information nor warrant the condition of the vessel. A buyer should instruct his agents, or his surveyors, to investigate such details as the buyer desires validated. This vessel is offered subject to prior sale, price change, or withdrawal without notice.

Исключения

При продаже яхты исключаются личные вещи владельца.

Отказ от ответственности

Компания предоставляет описание судна или яхты добросовестно, но не может гарантировать точность этой информации, а также не ручается за техническое состояние. Покупатель должен проинструктировать своих агентов или оценщиков исследовать представленную информацию более подробно, по собственному желанию. Продажа судна или яхты, изменение цены или снятие с продажи будет происходить без предварительного уведомления.

ФОТОГРАФИИ

43' Mainship starboard forward profile photo1



43' Mainship starboard forward profile photo2



43' Mainship port forward profile



43' Mainship port aft profile



43' Mainship forward profile



43' Mainship aft profile



43' Mainship at anchor



43' Mainship anchor windlass



43' Mainship foredeck



43' Mainship foredeck aft



43' Mainship port side deck photo1



43' Mainship port side deck photo2



43' Mainship starboard side deck photo1



43' Mainship starboard side deck photo2



43' Mainship flybridge forward



43' Mainship flybridge aft



43' Mainship flybridge port



43' Mainship flybridge starboard



43' Mainship flybridge helm



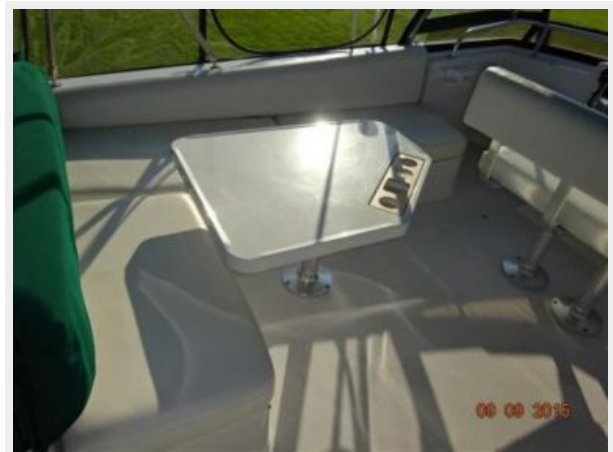
43' Mainship flybridge helmseat



43' Mainship flybridge port seating photo1



43' Mainship flybridge port seating photo2



43' Mainship flybridge starboard seating



43' Mainship trunk cabin



43' Mainship cockpit



43' Mainship cockpit port



43' Mainship cockpit starboard



43' Mainship swimplatform



43' Mainship salon forward



43' Mainship salon aft



43' Mainship salon port



43' Mainship salon starboard



43' Mainship salon desk



43' Mainship salon port seating



43' Mainship galley photo1



43' Mainship galley photo2



43' Mainship lower helm photo1



43' Mainship lower helm photo2



43' Mainship master stateroom



43' Mainship master stateroom port



43' Mainship master stateroom starboard



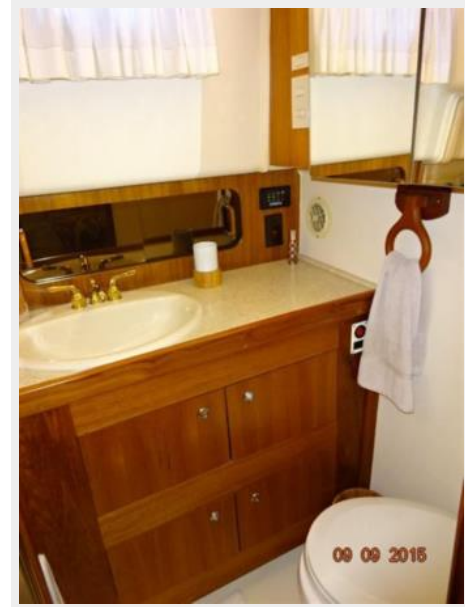
43' Mainship master stateroom forward



43' Mainship master stateroom aft



43' Mainship master stateroom head



43' Mainship master stateroom shower



43' Mainship forward guest stateroom



43' Mainship forward guest stateroom port



43' Mainship forward guest stateroom starboard



43' Mainship port guest stateroom



43' Mainship guest head



43' Mainship guest shower



43' Mainship washer-dryer



43' Mainship engine room forward



43' Mainship engine room aft



43' Mainship port main engine



43' Mainship port Racor fuel filter



43' Mainship starboard main engine



43' Mainship starboard Racor fuel filter



43' Mainship oil change system



43' Mainship electrical panel



43' Mainship generator



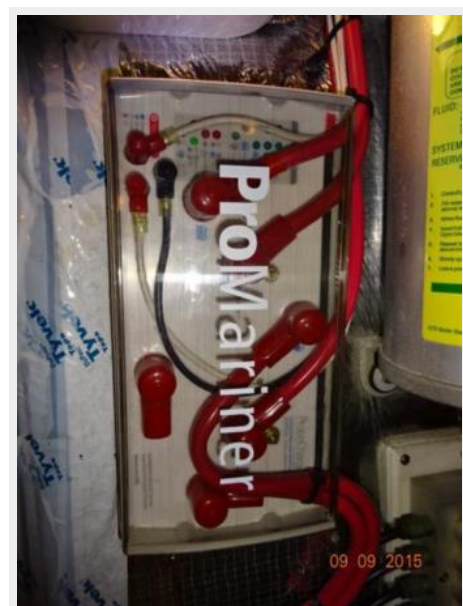
43' Mainship inverter



43' Mainship battery charger



43' Mainship battery isolator



43' Mainship layout



КОНТАКТЫ

Андрей Шестаков (Andrey Shestakov) – ведущий яхтенный брокер отдела продаж яхт и судов компании Shestakov Yacht Sales Inc. Официальный представитель Shestakov Yacht Sales Inc. для русскоговорящих клиентов в центральном офисе компании в Майами/Форт Лодердейл/Флорида/США.

Контактная информация

Email: andrey@shestakovyachtsales.com

Web: shestakovyachtsales.com

Телефоны

Краснодарский край: **+7(918)465-66-44**

США, Майами, Флорида: **+1(954)274-4435**

Время работы

Понедельник – Суббота: **9:00 - 21:00**
EDT

Воскресенье: **Закрето**

Адрес



Harbour Towne Marina, 850 NE 3rd St,
STE 213, Dania, FL 33004