

## TWO LIKE ONE — CHANTIER DE L'ESTEREL



**Судостроитель:** [Chantier de L'Esterel](#)

**Год постройки:** 1965

**Модель:** Моторная яхта

**Цена:** ЦЕНА ЯХТЫ ПО ЗАПРОСУ

**Местонахождение:** Italy

**Длина общая:** 81' 11" (24.97m)

**Ширина:** 16' 4" (4.98m)

**Мин. осадка:** 6' 0" (1.83m)

**Крейс. скорость:** 14 Kts. (16 MPH)

**Макс. скорость:** 18 Kts. (21 MPH)

Купить TWO LIKE ONE — Chantier de L'Esterel а также выбрать подходящую вам яхту из нашего каталога яхт вам поможет опытный яхтенный брокер Андрей Шестаков. На сегодняшний день компания Shestakov Yacht Sales Inc. имеет большое количество яхт в собственном списке продаж, а также тесно сотрудничает со всеми крупными яхтенными производителями по всему миру.

Для того чтобы купить яхту TWO LIKE ONE — Chantier de L'Esterel а также проконсультироваться по любому вопросу связанному с покупкой, продажей, чартером яхт позвоните по телефону **+7(918)465-66-44**.

# ОГЛАВЛЕНИЕ

ОГЛАВЛЕНИЕ	2
ХАРАКТЕРИСТИКИ	4
Обзор	4
Основная информация	4
Размеры	4
Скорость, вместимость и масса	4
Размещение	4
Корпус и палуба	5
Информация о двигателе	5
ПОДРОБНОЕ ОПИСАНИЕ	6
Broker's Comments	6
Owner's Comments	6
Construction	6
Machinery	6
Electrical Systems	7
Plumbing Systems	8
Tankage	8
Navigation Equipment	9
Domestic Equipment	9
Accommodation	10
Deck Equipment	12
Исключения	13
Отказ от ответственности	13
ФОТОГРАФИИ	14
КОНТАКТЫ	19
Контактная информация	19
Телефоны	19
Время работы	19

---

Адрес

19

# ХАРАКТЕРИСТИКИ

## Обзор

Superbly presented classic mahogany gentleman's motor-yacht from 1965 with 2006 major refit and engine re-conditions in 2004. 9 guests, 3 crew, Chantier L'Esterel at its finest!

## Основная информация

Тип судна: Моторная яхта

Подкатегория: Водоизмещение

Модельный год: 1965

Год постройки: 1965

Страна: Italy

## Размеры

Длина общая: 81' 11" (24.97m)

Ширина: 16' 4" (4.98m)

Мин. осадка: 6' 0" (1.83m)

## Скорость, вместимость и масса

Крейс. скорость: 14 Kts. (16 MPH)

Макс. скорость: 18 Kts. (21 MPH)

Водоизмещение: 155999.0965912  
Pounds

Вместимость воды: 396.258078 Gallons

Объем топливного бака: 1320.86026  
Gallons

## Размещение

Всего кают: 6

Всего коек: 12

Всего ком. состава: 3

## Корпус и палуба

---

**Материал корпуса:** Wood

**Материал палубы:** Teak

**Дизайнер корпуса:** Andre Mauric

## Информация о двигателе

---

**Двигатели:** 2

**Производитель:** GM

**Модель:** Detroit 12V51

**Тип двигателя:** Inboard

**Тип топлива:** Diesel

---

# ПОДРОБНОЕ ОПИСАНИЕ

---

## Broker's Comments

---

Stunning lines, four cabin layout and a contemporary re-working make this mahogany 1965 a modern classic. Re-worked in 2006, she will turn heads wherever she goes and has versatile accommodation to suit both family cruising MCA charter (she is compliant).

## Owner's Comments

---

“Two Like One” is an exceptional sea-boat from the renowned French yachtbuilder L’Esterel, near Nice. The shipyard has also built many commercial boats – for the French Navy and other institutions.

She is built in triple-lined mahogany, with a beamy, open fly bridge deck, and has been continually improved in her current ownership. With reverse-cycle air-conditioning, modern refrigeration and updated navigation electronics, she is a very rare mix of the classic and the modern.

## Construction

---

*RCD Status: Our understanding is that the yacht is exempt from the essential safety requirements of Directive 94/25EC (Recreational Craft Directive) as she was built and placed into use within the EU prior to 1998.*

### *Hull, Deck & Superstructure Construction:*

- Built in mahogany by French yard Chantier de l'Estérel
- She was delivered in 1965 and has since been updated to make her fully MCA compliant.
- A refit in 2006 gave her interior a fresh lease of life and she now has a contemporary, welcoming ambience.
- The main deck area is all in teak.

## Machinery

---

### *Engine & Gearboxes:*

- 2 x 500hp GM 12V71N Detroit diesel engines.
- Normally-aspirated, two-cycle, twelve cylinder ( V-formation ) diesel engine.

#### *Maintenance & Performance:*

- Cruising Speed: 14 knots.
- Maximum Speed: 18 knots.
- Range of c. 1100Nm at fast cruise of c. 16 knots.
- Engines were reconditioned in 2004, and since 1500h running time recorded.

#### *Propulsion & Steering:*

- 230 Kw bowthruster.

---

## **Electrical Systems**

---

#### *Voltage Systems:*

- 24V electrical system.

#### *Battery Banks:*

- 2 x new 200A motor batteries.
- 2 x 100A generator batteries.
- 16 x 120A service batteries.

#### *Battery Chargers:*

- 2 x 24V Battery charger.
- 1 x 12V Battery charger.

#### *Alternators:*

- Engine-driven alternator to each unit

#### *Generator:*

- 12/24V – 220V Kohler 19 Kw generator.
- Kohler 6.5 Kw generator.

#### *Shore Power:*

- Fitted with cable

---

## **Plumbing Systems**

---

#### *Fresh Water & Water Heating System:*

- Pressurised electric freshwater system

#### *Watermaker:*

- Marinco 70 litre/hour watermaker.

#### *Bilge Pumps:*

- 1 x Bilge pump with 5 areas covered.
- 5 x Independent pumps.

---

## **Tankage**

---

#### *Fuel:*

- Total capacity of 5,000 litres.

#### *Fresh water:*

- Total capacity of 1,500 litres.



---

## Navigation Equipment

---

- Raytheon R80 radar.
- Furuno GPS navigator.
- Maxsea 12 electronic chart card.
- Simrad AP20 Autopilot.
- Vetus Combi-6 sounder.
- Computer system with printer.
- VHF Navicom ASN.
- VHF Shipmate RS 8300.
- Navicom waterproof RT 350 Gyro and magnetic compasses.

---

## Domestic Equipment

---

### *Galley:*

- 7 large refrigerated storage drawers.
- 2 hob Airlux electric stovetop.
- De Dietrich double convection oven/microwave.
- Fager dishwasher.
- Nespresso Magimix.
- Additionally, situated in the crew area is a Whirlpool freezer and a Faure washer/dryer.

### *Heads/Showers:*

- 3 toilet compartment, with showers to each: Ensuites to VIP and master cabins, shared facilities for port guest cabins.

### *Heating & Ventilation:*

- Reversible heating/air conditioning system (cooling and heating).

*Entertainment:*

- LG TV and DVD/DVX player in master cabin.
- Philips TV and VCR and an X-Box 360 in VIP cabin.
- Saloon - Philips HD Flat Screen TV (on electric up and down mount); Satellite receiver; Kenwood stereo tuner T-92L; Kenwood stereo amplifier A-62; Kenwood CD player DP-320; Philips DVP 3040 DVD.
- Yamaha U1 piano – black.

*Lighting:*

- 24V lighting system

## Accommodation

---

*Summary of Accommodation:*

- Accommodation is for up to nine guests in four staterooms.
- The master suite is full beam amidships with an en-suite bathrooms and the spacious en-suite VIP stateroom comes with a double bed and a single berth, making it ideal for a child.
- Two twin cabins lie to port and starboard, sharing an en suite bathroom.
- The extensive open saloon has two large settees and plenty of dining space.
- Casual dining is available at an American-style breakfast bar.

*Description of layout:**Master Cabin:*

- The master cabin is forward midships.
- It is full beam with plenty of light through large windows.
- There is a great deal of drawer and cupboard space, a king size bed and a writing table.

- The ensuite W.C. has wood finishing and marble counters with an exceptionally large shower area.

#### *VIP Cabin:*

- The full beam VIP stateroom has a double and a single bed, ideal for children.
- Plenty of cupboard and drawer space, good lighting and parquet flooring.
- The ensuite W.C. has a shower, toilet and sink, good arrangements with wood finishing and marble counters.

#### *Guest Cabins:*

- There are two identical guest cabins midships port and starboard.
- They are well appointed for cupboard and drawer space and have perpendicular bunks.
- The two cabins share a portside W.C. which has wood finishing and a marble sink counter.

#### *Saloon:*

- The saloon has a very open feeling and since refitted in 2006 has a fresh, contemporary style. There are two large sofas and plenty of space for interior dining.
- The arrangements for storage are ample and practical.
- The saloon also incorporates an American style breakfast bar/bar which in turn incorporates the galley.
- Saloon sofas designed by Antonio Citerio, Charles for B&B. Washable very easily at 40° C.

#### *Galley/Laundry:*

- The galley is effectively incorporated within the saloon, ideal for direct service into the saloon or onto the deck.
- It has an American style breakfast bar with a large marble counter and a large preparation area.
- A multitude of cupboard and drawer space accommodates the storage of goods and utensils.

## Deck Equipment

---

### *General:*

- The flybridge is accessed by a ladder from the aft deck and provides an expansive area for sunbathing and relaxing.
- Forward there is a cushioned sunbathing area which is perfect for use while cruising as it is sheltered from the wind.
- There are two tables with cushioned benches and teak deck chairs for recreation, dining or drinks which can be sheltered by the bimini and more bench space aft.
- The benches also serve as practical storage for deck and safety equipment.
- On the aft deck there is plenty of space allowing for a teak dining table that can accommodate up to 8 guests for al fresco dining.
- Forward there is a dedicated sunbathing area with cushioned space for up to 6 and a 4 person sofa.
- There is a passarelle ladder for boarding the tender starboard, a hydraulic passarelle aft and a swim platform with ladder aft.

### *Anchoring & Mooring Equipment:*

- 100kg anchor.
- 80m 'diamond' chain.

### *Covers, Canvas & Cushions:*

- Forward there is a cushioned sunbathing area which is perfect for use while cruising as it is sheltered from the wind.
- There are two tables with cushioned benches and teak deck chairs for recreation, al fresco dining or drinks sheltered by the Bimini top.

### *Tender & Outboard:*

- 500 Kg davit crane.

- Zodiac 360 with 80HP waterjet engine.
- Yamaha 155HP Waverunner.

#### *Safety Equipment:*

- Lifejackets.
- 2 x 8 person liferafts (require servicing).

#### *Fire-fighting equipment:*

- Fixed CO<sup>2</sup> engine room fire control system with automatic ventilation and exterior control 6 Powder fire extinguishers.

## **Исключения**

---

При продаже яхты исключаются личные вещи владельца.

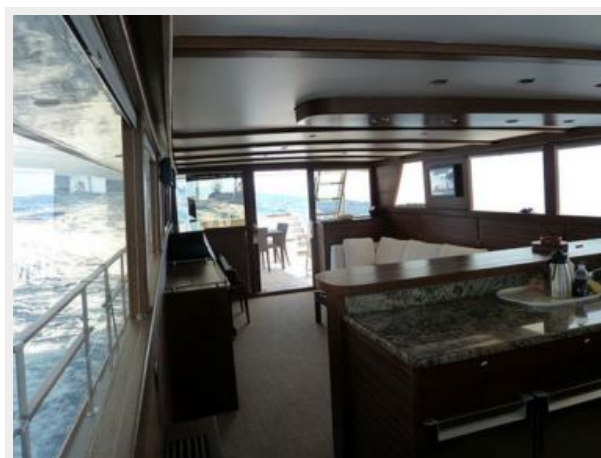
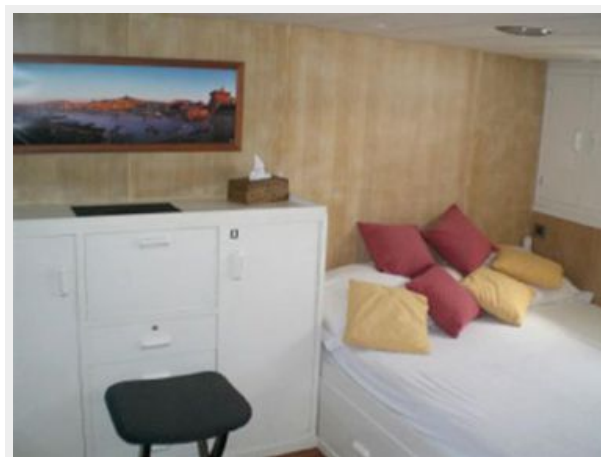
## **Отказ от ответственности**

---

Компания предоставляет описание судна или яхты добросовестно, но не может гарантировать точность этой информации, а также не ручается за техническое состояние. Покупатель должен проинструктировать своих агентов или оценщиков исследовать представленную информацию более подробно, по собственному желанию. Продажа судна или яхты, изменение цены или снятие с продажи будет происходить без предварительного уведомления.

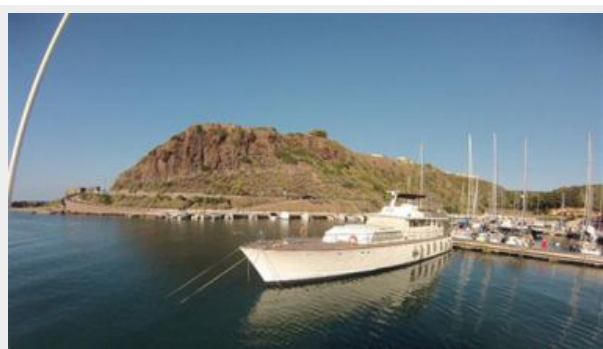
# ФОТОГРАФИИ













# КОНТАКТЫ

Андрей Шестаков (Andrey Shestakov) – ведущий яхтенный брокер отдела продаж яхт и судов компании Shestakov Yacht Sales Inc. Официальный представитель Shestakov Yacht Sales Inc. для русскоговорящих клиентов в центральном офисе компании в Майами/Форт Лодердейл/Флорида/США.

## Контактная информация

Email: [andrey@shestakovyachtsales.com](mailto:andrey@shestakovyachtsales.com)

Web: [shestakovyachtsales.com](http://shestakovyachtsales.com)

## Телефоны

Краснодарский край: **+7(918)465-66-44**

США, Майами, Флорида: **+1(954)274-4435**

## Время работы

Понедельник – Суббота: **9:00 - 21:00**  
EDT

Воскресенье: **Закрито**

## Адрес



Harbour Towne Marina, 850 NE 3rd St,  
STE 213, Dania, FL 33004