

## DIFFERENT DRUMMER II — LAZZARA



**Судостроитель:** LAZZARA

**Год постройки:** 1997

**Модель:** Моторная яхта

**Цена:** **ЦЕНА ЯХТЫ ПО ЗАПРОСУ**

**Местонахождение:** United States

**Длина общая:** 80' 0" (24.38m)

**Ширина:** 19' 1" (5.82m)

**Мин. осадка:** 4' 6" (1.37m)

Купить **DIFFERENT DRUMMER II — LAZZARA** а также выбрать подходящую вам яхту из нашего каталога яхт вам поможет опытный яхтенный брокер Андрей Шестаков. На сегодняшний день компания **Shestakov Yacht Sales Inc.** имеет большое количество яхт в собственном списке продаж, а также тесно сотрудничает со всеми крупными яхтенными производителями по всему миру.

Для того чтобы купить яхту **DIFFERENT DRUMMER II — LAZZARA** а также проконсультироваться по любому вопросу связанному с покупкой, продажей, чартером яхт позвоните по телефону **+7(918)465-66-44**.

# ОГЛАВЛЕНИЕ

ОГЛАВЛЕНИЕ	2
ХАРАКТЕРИСТИКИ	6
Основная информация	6
Размеры	6
Скорость, вместимость и масса	6
Размещение	6
Корпус и палуба	6
Информация о двигателе	6
ПОДРОБНОЕ ОПИСАНИЕ	7
80' Lazzara Motor Yacht DIFFERENT DRUMMER II	7
Vessel Walkthrough	7
Pilothouse	8
Boat Deck	8
Galley and Dinette	8
Forward Accommodations/ Crew Area	9
Master Stateroom	9
VIP Staterooms	9
Salon	9
Lower Aft Deck	9
Cockpit	10
Engine Room	10
Bow and Deck	10
Additional Equipment	11
Исключения	11
Отказ от ответственности	11
ФОТОГРАФИИ	12
Profile	12
Transom	12

Forward	12
Foredeck	12
Upper Deck	12
Upper Deck	12
Upper Deck Seating	13
Upper Deck Tender Storage	13
Aft Deck	13
Aft Deck	13
Aft Deck Wet Bar	13
Aft Deck Seating	13
Helm	14
Helm	14
Skyounge	14
Skyounge	14
Skyounge Seating	14
Skyounge Pop Up TV	14
Skyounge Desk	15
Skyounge	15
Salon	15
Salon	15
Salon	15
Salon	15
Salon	16
Salon	16
Dining	16
Dining	16
Day Head	16
Galley	16
Galley	17

Galley	17
Galley	17
Dinette	17
Dinette	17
Master Stateroom	17
Master Stateroom	18
Master Stateroom	18
Master Stateroom	18
Master Stateroom	18
Master Stateroom	18
Master Stateroom	18
Master Bathroom	18
Master Bathroom	19
Master Bathroom	19
Master Bath Tub	19
VIP Starboard	19
VIP Starboard	19
Guest Bathroom	19
Guest Bathroom	20
VIP Port	20
VIP Port	20
Guest Bathroom	20
Guest Bathroom	20
Office	20
Office	21
Captain Forward	21
Captain Bathroom	21
Crew Quarters	21
Crew Bathroom	22
Crew Bathroom	22

---

Laundry	22
Companionway	22
Cockpit	23
Cockpit	23
Engine Room	23
Engine Room	23
Engine Room	23
Generator	23
Generator	24
Battery Charger	24
Watermaker	24
Dive Compressor	24
КОНТАКТЫ	25
Контактная информация	25
Телефоны	25
Время работы	25
Адрес	25

# ХАРАКТЕРИСТИКИ

## Основная информация

Тип судна: Моторная яхта

Модельный год: 1997

Год постройки: 1997

Страна: United States

## Размеры

Длина общая: 80' 0" (24.38m)

Ширина: 19' 1" (5.82m)

Мин. осадка: 4' 6" (1.37m)

## Скорость, вместимость и масса

Водоизмещение: 115000 Pounds

Вместимость воды: 350 Gallons

Вместимость сточного бака: 150 Gallons Объем топливного бака: 2150 Gallons

## Размещение

Всего кают: 5

Всего ком. состава: 6

## Корпус и палуба

Материал корпуса: Fiberglass

## Информация о двигателе

Двигатели: 2

Производитель: MTU

Модель: 12V183TE93

Тип двигателя: Inboard

Тип топлива: Diesel

---

# ПОДРОБНОЕ ОПИСАНИЕ

---

## 80' Lazzara Motor Yacht DIFFERENT DRUMMER II

---

This 80' Lazzara Skylounge Motor Yacht DIFFERENT DRUMMER II combines truly spacious accommodations, unsurpassed cruising comfort, and a cockpit ready for fishing action and water toy fun. Full Beam salon, home-size galley, settee, formal dining area, day head, lavish master suite, two VIP cabins with queen beds and private baths. Two crew cabins with private baths, den/office. Panoramic Skylounge, huge upper aft deck, large foredeck with sunpads, lower aft deck with hard top and the addition of a cockpit making her a luxury yacht capable of serious sportfishing or diving. Many recent upgrades throughout, including new interior overhead and wall panels. Don't miss the opportunity to see this gorgeous and versatile yacht.

### Vessel Walkthrough

---

This Lazzara 80' features a master stateroom and two VIP staterooms located amidships with two additional cabins forward that can be used for guests or crew. The Skylounge has an automatic reclining sleeper sofa. Each stateroom onboard has a full ensuite head. A dayhead is conveniently located on the starboard side of the vessel between the salon and galley. The main salon is a large and beautifully appointed area with formal dining accommodations and a large U shaped sofa with a coffee table to port and a sofa to starboard, built in counters with cabinet storage below are on all sides. The aft starboard corner features a custom wood entertainment center with flat screen TV and A/V equipment. Located between the salon and galley is a beautiful buffet area with china, bottle and glass storage. The large spacious galley features a new full size refrigerator, new dishwasher, new trash compactor and richly appointed features usually reserved for much larger vessels. The open layout is great for entertaining and conversing with guests seated at the large L-shaped dinette table forward of the galley nestled below the large forward house windows. Port and starboard wing doors offer perfect access to the bow for sunbathing and lounging. Forward of the galley and dinette area is the study and additional guest or crew accommodations. Equipped with a large desk/office area and private laundry facilities, two heads and two staterooms with sleeping for four, this area is completely isolated from the owner and guest staterooms. Located on the starboard side of the forward salon, a spiral staircase leads down to a very large landing area accessing the master stateroom aft and two very comfortable VIP staterooms forward. The landing area houses an additional refrigerator, washer/dryer, huge storage spaces and closets. The Master Suite is luxuriously appointed and very spacious and comfortable. This inviting space is the perfect getaway after a fun filled day. There are full size his and her dressers, night stands and chairs on both sides of the very large king size berth. Ample storage and a huge walk-in closet leave plenty of space for all the clothing and apparel an owner could ask for. The bulkhead in front of the bed houses a TV and entertainment system. The master head is very large and features a huge Jacuzzi tub/shower, freshwater toilet, dual vanity, linen closet, marble flooring and countertops. Forward of the landing area are the two large VIP staterooms, each with spacious ensuite head. Each stateroom offers a queen size berth, generous drawer and closet storage and TV's with

entertainment systems. The Skylounge, accessed via a staircase from the galley/dinette area is an inviting space with convertible sofa sleeper, pop-up TV, entertainment system and sliding door accessing the aft boat deck. Walking aft outside onto the boat deck, the vessel houses two 1100# cranes ingeniously integrated as part of the cabin sides. A large hard-bottom center console RIB and wave runner. An electric grill, sink and seating area with table offers another great outdoor space. The lower aft deck features a wet bar, seating area, and tables to both port and starboard. Access to the salon is via a sliding stainless steel frame door. The cockpit is located down a staircase from the lower aft deck and features all the fishing amenities of a sport fisher. Rod holders, fighting chair, bait well, huge fish boxes, etc. While you can relax and lounge in total comfort and luxury almost anywhere on this beautiful yacht, the cockpit is reserved and set up for fishing action and on the water fun!

---

## Pilothouse

---

- Bow thruster controls
- Electric sub panel for bridge equipment and electronics
- Garmin GPS Map 8000 Touch Screen Chart Plotter and Sounder
- Garmin GPS Map 5208 Touch Screen Chart plotter
- Robertson AP300X Autopilot with remote
- Simrad Radar
- ISIS 700C Integrated shipboard information system with flat screen display
- Independent Cruisair heat/AC system
- Refrigerator
- Dual helm chairs with electric automated adjustments
- Datamarine Electronic compass
- Pop-up TV
- Large L shaped settee with storage and electrically converts to a berth
- Desk/office area

---

## Boat Deck

---

- SS Electric BBQ
- 2x 1100 pound capacity davit
- 13' Inflatable w/ 40hp Yamaha
- Fresh and Salt water washdowns
- Speakers
- Halogen deck lighting and courtesy lights

---

## Galley and Dinette

---

- Port and stbd sliding doors for side-deck access



- Large L-shaped dinette forward of galley with storage above and below
- Recently upgraded Galley Appliances: New side-by-side refrigerator/freezer New Trash compactor New Dishwasher Electric 4-burner cooktop with stove Microwave
- SS Galley sink
- Kitchen TV
- AC DC Electrical panels to port between galley and dinette
- Large high and low storage cabinets

---

## Forward Accommodations/ Crew Area

---

- Office area with desk
- Stackable washer/dryer
- Crew cabin with dual bunks TV and private separate head/shower to stbd
- Forward captain's cabin with TV and private head/shower
- Full size bed with storage below and to port and starboard

---

## Master Stateroom

---

Full beam master stateroom with king bed, huge walk-in closet, his and her dressers, vanity area and seating. TV and entertainment system. Huge master bath with double vanity sinks, marble floors and countertop. Jacuzzi tub with shower. Companionway between master and guest accommodations: Huge storage areas with refrigerator, linen closets, storage closet, washer/dryer.

---

## VIP Staterooms

---

2 guest staterooms with queen beds, storage lockers and private full baths with shower.

---

## Salon

---

- Bar on stbd side with large wine and bottle storage
- Large dining table with chairs for formal dining
- Large u-shaped sofa to port
- Love seat to stbd
- 42" Flat Screen TV and entertainment system

---

## Lower Aft Deck

---

- Wet bar with sink and compact refrigerator/ice maker
- Large L-shaped dinette to stbd with additional table and seating to port

- Large SS frame sliding salon door
- Teak decks
- Storage

## Cockpit

---

- Fighting Chair
- Tackle center with storage
- Engine room access door
- Transom door
- Large storage lockers
- 3 large in-deck lazarette fish boxes
- Rod holders
- Swim platform
- Fresh and saltwater wash-downs

## Engine Room

---

- Sea Recovery Aquamatic 600 GPD watermaker
- 2x 20KW generators
- Battery selector switches
- Twin MTU series 92 1100hp turbo diesel engines Overhauled in 2014
- ZF Microcommander control boxes
- Fireboy Halon System
- 3x Charles 9000 series C-Chargers battery chargers
- Glendenning Shore Power Retrieval System
- Oil Change System
- Fuel Transfer Pump
- Racor fuel filters
- Bauer Dive Compressor
- CCTV Camera
- Tides Marine shaft seals
- New Lighting and fans
- Work benches

## Bow and Deck

---

- Large padded Lounge area with cover
- Trunk Cabin Storage Compartments
- Deck Hatch over Crew area
- Maxwell vertical anchor windlass

- 110 lb. claw anchor
- Marine speakers
- Deck lights and flood lights
- Horn

## Additional Equipment

---

- Bow Thruster
- Active Fin stabilizer control system
- Trim Tabs
- Remote steering control

## Исключения

---

При продаже яхты исключаются личные вещи владельца.

## Отказ от ответственности

---

Компания предоставляет описание судна или яхты добросовестно, но не может гарантировать точность этой информации, а также не ручается за техническое состояние. Покупатель должен проинструктировать своих агентов или оценщиков исследовать представленную информацию более подробно, по собственному желанию. Продажа судна или яхты, изменение цены или снятие с продажи будет происходить без предварительного уведомления.

# ФОТОГРАФИИ

**Profile**



**Transom**



**Forward**



**Foredeck**



**Upper Deck**



**Upper Deck**



**Upper Deck Seating**



**Upper Deck Tender Storage**



**Aft Deck**



**Aft Deck**



**Aft Deck Wet Bar**



**Aft Deck Seating**



**Helm**



**Helm**



**Skylounge**



**Skylounge**



**Skylounge Seating**



**Skylounge Pop Up TV**



**Skyounge Desk**



**Skyounge**



**Salon**



**Salon**



**Salon**



**Salon**



Salon



Salon



Dining



Dining



Day Head



Galley





**Galley**



**Galley**



**Galley**



**Dinette**



**Dinette**



**Master Stateroom**



**Master Stateroom**



**Master Stateroom**



**Master Stateroom**



**Master Stateroom**



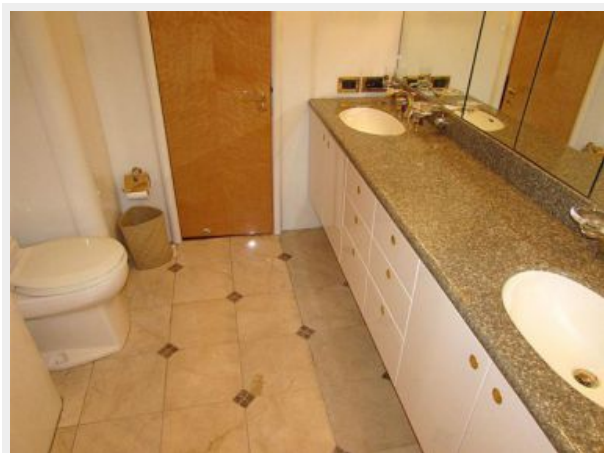
**Master Stateroom**



**Master Bathroom**



**Master Bathroom**



**Master Bathroom**



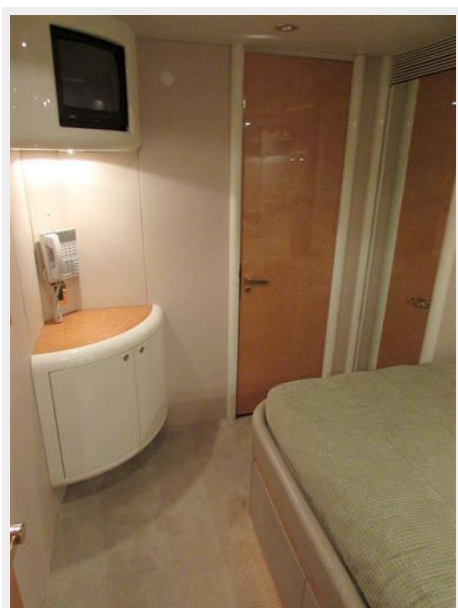
**Master Bath Tub**



**VIP Starboard**



**VIP Starboard**



**Guest Bathroom**



**Guest Bathroom**



**VIP Port**



**VIP Port**



**Guest Bathroom**



**Guest Bathroom**



**Office**



**Office**



**Captain Forward**



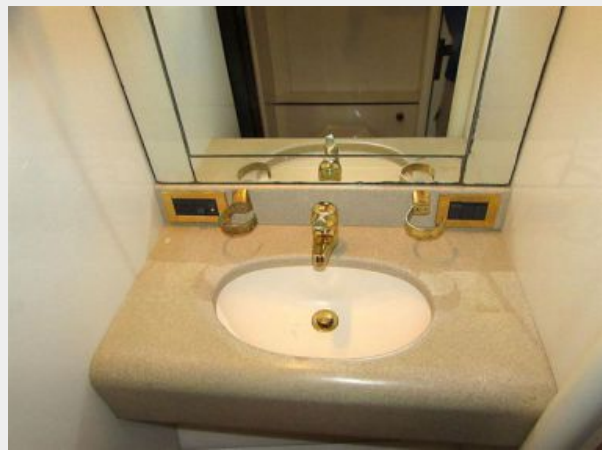
**Captain Bathroom**



**Crew Quarters**



**Crew Bathroom**



**Crew Bathroom**



**Laundry**



**Companionway**



**Cockpit**



**Cockpit**



**Engine Room**



**Engine Room**



**Engine Room**



**Generator**



**Generator**



**Battery Charger**



**Watermaker**



**Dive Compressor**





# КОНТАКТЫ

---

Андрей Шестаков (Andrey Shestakov) – ведущий яхтенный брокер отдела продаж яхт и судов компании Shestakov Yacht Sales Inc. Официальный представитель Shestakov Yacht Sales Inc. для русскоговорящих клиентов в центральном офисе компании в Майами/Форт Лодердейл/Флорида/США.

## Контактная информация

---

Email: [andrey@shestakovyachtsales.com](mailto:andrey@shestakovyachtsales.com)

Web: [shestakovyachtsales.com](http://shestakovyachtsales.com)

## Телефоны

---

Краснодарский край: **+7(918)465-66-44**

США, Майами, Флорида: **+1(954)274-4435**

## Время работы

---

Понедельник – Суббота: **9:00 - 21:00**  
EDT

Воскресенье: **Закрито**

## Адрес

---



Harbour Towne Marina, 850 NE 3rd St,  
STE 213, Dania, FL 33004