

SPIRIT — HINCKLEY



Судостроитель: HINCKLEY

Год постройки: 1979

Модель: Крейсерская яхта

Цена: **ЦЕНА ЯХТЫ ПО ЗАПРОСУ**

Местонахождение: United States

Длина общая: 50' 7" (15.42m)

Ширина: 13' 0" (3.96m)

Мин. осадка: 5' 6" (1.68m)

Макс. осадка: 10' 0" (3.05m)

Купить **SPIRIT — HINCKLEY** а также выбрать подходящую вам яхту из нашего каталога яхт вам поможет опытный яхтенный брокер Андрей Шестаков. На сегодняшний день компания **Shestakov Yacht Sales Inc.** имеет большое количество яхт в собственном списке продаж, а также тесно сотрудничает со всеми крупными яхтенными производителями по всему миру.

Для того чтобы купить яхту **SPIRIT — HINCKLEY** а также проконсультироваться по любому вопросу связанному с покупкой, продажей, чартером яхт позвоните по телефону **+7(918)465-66-44**.

ОГЛАВЛЕНИЕ

ОГЛАВЛЕНИЕ	2
ХАРАКТЕРИСТИКИ	4
Обзор	4
Основная информация	4
Размеры	4
Скорость, вместимость и масса	4
Размещение	4
Корпус и палуба	5
Информация о двигателе	5
ПОДРОБНОЕ ОПИСАНИЕ	6
Broker's Comments	6
Construction	6
Machinery	6
Electrical Systems	7
Plumbing Systems	8
Tankage	8
Navigation Equipment	8
Domestic Equipment	9
Accommodation	10
Deck Equipment	11
Исключения	13
Отказ от ответственности	13
ФОТОГРАФИИ	14
КОНТАКТЫ	20
Контактная информация	20
Телефоны	20
Время работы	20
Адрес	20

ХАРАКТЕРИСТИКИ

Обзор

Spirit is hull number 15 of the impressive Sou'wester 50 Yawl series. Constantly upgraded and maintained, in true offshore ready condition. Spirit has safely cruised with her current owner to many places on the eastern seaboard and beyond! The paint sparkles, the sails are fresh, electronics are state of the art. If you want a safe, solid boat, ready to go anywhere, then Spirit should be at the top of your list!

Основная информация

Тип судна: Крейсерская яхта

Модельный год: 1979

Год постройки: 1979

Страна: United States

Размеры

Длина общая: 50' 7" (15.42m)

Длина по ватерлинии: 36' 5" (11.10m)

Ширина: 13' 0" (3.96m)

Мин. осадка: 5' 6" (1.68m)

Макс. осадка: 10' 0" (3.05m)

Скорость, вместимость и масса

Водоизмещение: 35999.28276198

Pounds

Размещение

Всего кают: 3

Всего коек: 7

Корпус и палуба

Материал корпуса: GRP

Материал палубы: GRP

Дизайнер корпуса: H.R. Hinckley

Информация о двигателе

Двигатели: 1

Производитель: Yanmar

Модель: 4LHTE

Тип двигателя: Inboard

Тип топлива: Diesel

ПОДРОБНОЕ ОПИСАНИЕ

Broker's Comments

Spirit is hull number 15 of the impressive Sou'wester 50 Yawl series. Constantly upgraded and maintained, in true offshore ready condition. Spirit has safely cruised with her current owner to many places on the eastern seaboard and beyond! The paint sparkles, the sails are fresh, and electronics are state of the art. If you want a safe, solid boat, ready to go anywhere, then Spirit should be at the top of your list!

Construction

Hull, Deck & Superstructure Construction:

- Solid fiberglass hull.
- White awlgrip.
- White awlgripped deck with contrasting non-skid.
- Un-varnished solid teak toerail, cockpit coaming and other exterior trim.
- Manually operated centreboard with worm gear, operated from cabin.

Machinery

Engine & Gearboxes:

- 1 x Yanmar 4LHTE 100hp diesel engine.

Maintenance & Performance:

- Engine Hours: c. 3,185.

Propulsion & Steering:

- Wheel steering.
- Bow thruster (Sidepower, 12v electric).

Other Mechanical:

- Extensive engine and system spares onboard.

Electrical Systems

Voltage Systems:

- Bass electrical panel with digital volt and amp meters.

Battery Banks:

- 4 x D AGM house batteries.
- AGM engine and separate generator start battery.

Battery Chargers:

- Mastervolt 2kW inverter charger.

Alternators:

- 200 amp Balmar alternator.
- 60 amp alternator for engine and gen batteries.

Generator:

- Northern Lights 7.7kW generator. c. 1,171 hours.

Shore Power:

- 220v/110v shore power.

Other Electrical:

- Isolating transformer.

- 2KW Mastervolt inverter.

Plumbing Systems

Fresh Water & Water Heating System:

- Whale on demand water pump.
- Seagull water filter.

Watermaker:

- Sea Recovery 600 GPD 110v watermaker.

Tankage

Fuel:

- Total capacity of 180 gallons.

Fresh water:

- Total capacity of 280 gallons.

Grey/Blackwater holding tanks:

- Total capacity of 25 gallons.

Navigation Equipment

- Furuno MFD 12 navnet at chart table.
- Furuno MFD 8 nav net display outside.
- Maretron DSM250 digital guage readouts (nmea 200).
- Icom ICM710 SSB.
- Icom ICM504 VHF.
- Vetus meteo line barograph.
- Furuno NX300 Navtex.
- B&G Hydra system with performance processor.

- B&G Hercules pilot display at chart table and cockpit.
- Multiple B&G readouts in the cockpit.
- Samsung monitor at chart table.
- Dell Zinio computer, keyboard and mouse.
- XM weather receiver.
- Macsea software.
- Echopilot forward looking depth sounder.
- Danforth constellation compass.

Domestic Equipment

Galley:

- Force 10 stove.
- Deep stainless sink.
- Fresh, Salt and Filtered water with manual back up.
- Seafrust AC/DC refrigeration, top loaded.

Heads/Showers:

- Electric fresh water WCs.

Heating & Ventilation:

- 2 x Air conditioning units.
- 12v fans throughout yacht.

Entertainment:

- Infinity speakers in saloon.
- Bose speakers in cockpit.
- Alpine stereo am/fm/cd/DVD.
- XM radio.
- LG LCD TV mounted on saloon bulkhead (connected to nav. electronics).
- RR TV antenna.

Lighting:

- LED interior lights.
- LED navigation lights (Lopolights).

Accommodation

Summary of Accommodation:

- Headroom: 6'4".

Description of layout from forwards:

- Beautifully finished in true Hinckley fashion in varnished oak, with solid teak and holly cabin soles.
- The forward cabin has a Vee berth with infill, hanging lockers, drawers and shelves.
- Overhead hatch with opaque lexan.
- Ensuite access to the head and stall shower to port.
- Next aft to starboard is a passageway cabin with a raised double bed, with a privacy curtain.
- Ample storage underneath.
- Two directors chairs are stowed on the centerline bulkhead (for use around the saloon table).
- Aft of this cabin is a day head with a vanity sink, electric head, and hand held shower.
- Opposite, to port is a guest cabin with upper and lower bunks, and ensuite access to the head and shower, forward (shared with the vee berth cabin).
- On the centerline bulkhead is a fold down desk top, and aft of the berths is a hanging locker.
- The main cabin is light and airy, and is raised slightly from the forward accommodation.
- To port is an L shaped settee in burgundy ultrasuede, a drop leaf table, and storage cabinets outboard.
- To starboard is the L shaped galley, with good countertop space, a Force 10 stove, deep stainless sink, Fresh, Salt and Filtered water with manual back up. Seafrst refrigeration, top

loaded.

- To port of the companionway is the L shaped nav table, with swivel seat.
- Full compliment of modern nav electronics , including a computer and flat screen monitor.

Deck Equipment

Rig:

- Hood electric stowaway mast (in mast furling).
- Twin harken furlers - Headstay and staysail.
- Hood stoway mizzen mast. Manually operated.
- White painted spars.
- Carbon mast mounted whisker pole.
- Wire standing rigging.
- Navtec hydraulic backstay for main mast.
- Garhuer custom genoa tracks, turning blocks.
- Harken main traveller.

Winches:

- Harken electric 2 speed primary winches.
- Bariant electric secondary winches.

Sails:

- North mainsail.
- North 130% genoa.
- North staysail (on furler).
- Mizzen.
- Mizzen staysail.
- Gennaker with sock.
- Second mainsail.

General:

- Double cockpit lockers.
- Lazarette.

- Stainless dorade vents on teak boxes.
- Cockpit table.

Anchoring & Mooring Equipment:

- Ideal anchor windlass – power up/down.
- Massive stemhead fitting with double rollers.
- CQR and Danforth anchors stowed on the stemhead.
- Fenders with fabric covers.
- Lines.
- Fortress anchor.

Covers, Canvas & Cushions:

- Bimini.
- Dodger.
- Cockpit enclosure.
- Wheel cover.
- Cockpit cushions.

Tender & Outboard:

- Yamaha 15hp outboard.
- 5hp outboard.
- Inflatable dinghy.

Safety Equipment:

- Lifeline gates.
- 2 x EPIRBS 406.

- Avon 6-person liferaft.
- Lifesling.
- Coastguard safety equipment.

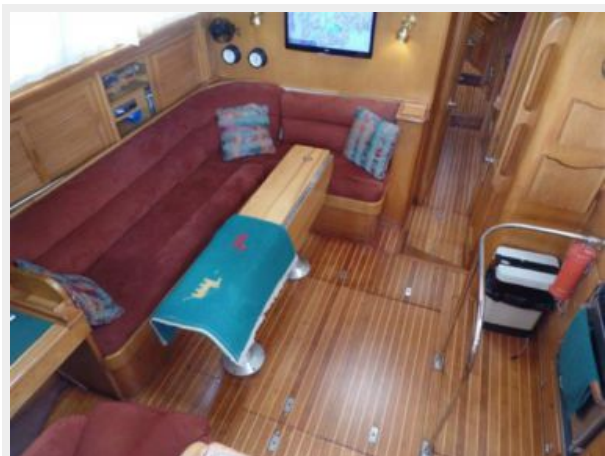
Исключения

При продаже яхты исключаются личные вещи владельца.

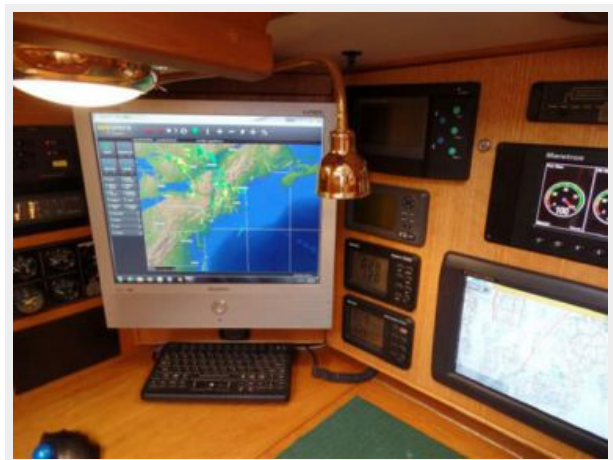
Отказ от ответственности

Компания предоставляет описание судна или яхты добросовестно, но не может гарантировать точность этой информации, а также не ручается за техническое состояние. Покупатель должен проинструктировать своих агентов или оценщиков исследовать представленную информацию более подробно, по собственному желанию. Продажа судна или яхты, изменение цены или снятие с продажи будет происходить без предварительного уведомления.

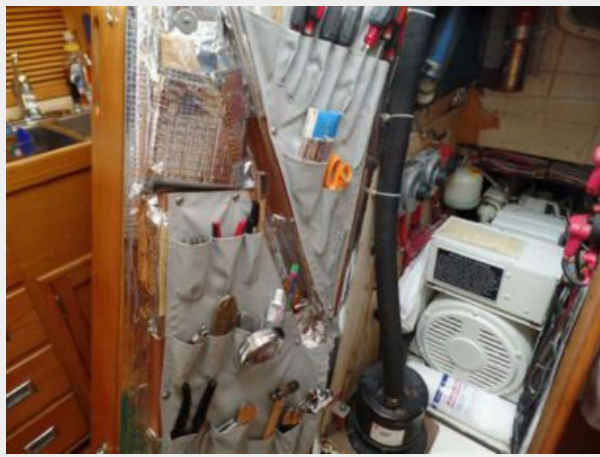
ФОТОГРАФИИ

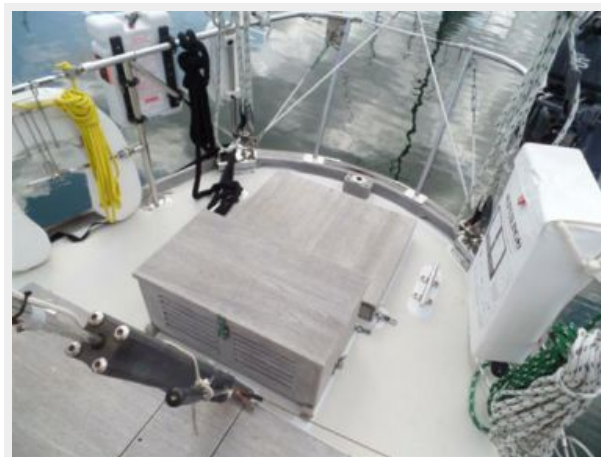
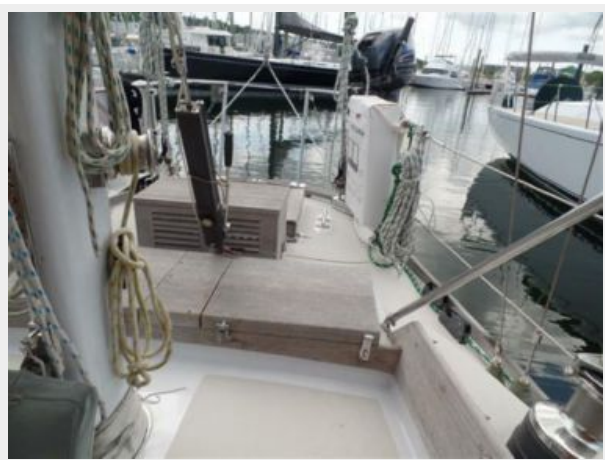












КОНТАКТЫ

Андрей Шестаков (Andrey Shestakov) – ведущий яхтенный брокер отдела продаж яхт и судов компании Shestakov Yacht Sales Inc. Официальный представитель Shestakov Yacht Sales Inc. для русскоговорящих клиентов в центральном офисе компании в Майами/Форт Лодердейл/Флорида/США.

Контактная информация

Email: andrey@shestakovyachtsales.com

Web: shestakovyachtsales.com

Телефоны

Краснодарский край: **+7(918)465-66-44**

США, Майами, Флорида: **+1(954)274-4435**

Время работы

Понедельник – Суббота: **9:00 - 21:00**
EDT

Воскресенье: **Закрето**

Адрес



Harbour Towne Marina, 850 NE 3rd St,
STE 213, Dania, FL 33004