

THE LOAN SHARK — SUNSEEKER



Судостроитель: SUNSEEKER

Год постройки: 2012

Модель: Моторная яхта

Цена: ЦЕНА ЯХТЫ ПО ЗАПРОСУ

Местонахождение: United States

Длина общая: 63' 0" (19.20m)

Ширина: 16' 10" (5.13m)

Макс. осадка: 5' 3" (1.60m)

Крейс. скорость: 25 Kts. (29 MPH)

Макс. скорость: 33 Kts. (38 MPH)

Купить The Loan Shark — SUNSEEKER а также выбрать подходящую вам яхту из нашего каталога яхт вам поможет опытный яхтенный брокер Андрей Шестаков. На сегодняшний день компания Shestakov Yacht Sales Inc. имеет большое количество яхт в собственном списке продаж, а также тесно сотрудничает со всеми крупными яхтенными производителями по всему миру.

Для того чтобы купить яхту The Loan Shark — SUNSEEKER а также проконсультироваться по любому вопросу связанному с покупкой, продажей, чартером яхт позвоните по телефону **+7(918)465-66-44**.

ОГЛАВЛЕНИЕ

ОГЛАВЛЕНИЕ	2
ХАРАКТЕРИСТИКИ	3
Обзор	3
Основная информация	3
Размеры	4
Скорость, вместимость и масса	4
Размещение	4
Корпус и палуба	4
Информация о двигателе	5
ПОДРОБНОЕ ОПИСАНИЕ	6
Overview	6
Salon	6
Accommodations	6
Fly Bridge	7
Pilothouse	8
Galley	8
Deck	8
Mechanical	9
Исключения	9
Отказ от ответственности	9
ФОТОГРАФИИ	10
КОНТАКТЫ	26
Контактная информация	26
Телефоны	26
Время работы	26
Адрес	26

ХАРАКТЕРИСТИКИ

Обзор

LOAN SHARK is a full-time captain maintained mint condition example of Sunseeker's popular Manhattan series. She boasts very impressive spaces for her size, with luxurious accommodations for up to 8 guests plus an oversized 5th crew cabin option. She also features the high performing and efficient joystick controlled IPS Drive option, along with a beautiful blue hull. The owner spared no expense and loaded this yacht with a jaw-dropping list of every available factory option and beyond! The yacht is currently available for inspection in Miami Beach, FL.

Sleek aggressive lines, oversized panoramic windows, rich satin cherry wood interior with wood flooring on deck and beige carpet below, granite countertops, and the latest in Navigational & Audio Visual Equipment follow guests in all areas. A major highlight is that the owner recently installed an extra strength upgraded custom Hardtop with a power sunroof Bimini, LED lighting and Sunseeker styled fiberglass side wings. If you are searching for the best-equipped late model 4 stateroom flying bridge Sunseeker on the market, look no further!

*All recent upgrades and optional equipment highlighted in red.

Manufacturer Provided Description

The Manhattan 63 is a perfect example of a boat that packs innovation, luxury and performance into an exceptionally graceful frame. The hull form has been specifically designed for IPS drives which produces fantastic results in performance, handling and economy. Upper deck galley, four staterooms with a midships full-beam master and very large hull-side windows. Saloon and entertainment space has been increased and enlarged and panoramic superstructure windows ensure a feeling of openness.

Основная информация

Тип судна: Моторная яхта

Подкатегория: Flybridge

Модельный год: 2012

Год постройки: 2012

Страна: United States

Открытая палуба мостика: Да

Размеры

Длина общая: 63' 0" (19.20m)

Ширина: 16' 10" (5.13m)

Макс. осадка: 5' 3" (1.60m)

Скорость, вместимость и масса

Крейс. скорость: 25 Kts. (29 MPH)

Дальность на крейсерской скорости:
270

Макс. скорость: 33 Kts. (38 MPH)

Водоизмещение: 75900 Pounds

Вместимость воды: 215 Gallons

Вместимость сточного бака: 70 Gallons

Объем топливного бака: 776 Gallons

Размещение

Всего кают: 4

Всего коек: 8

Спальные места: 8

Всего ком. состава: 3

Каюты экипажа: 1

Койки экипажа: 2

Спальных мест экипажа: 2

Комм. состав экипажа: 1

Корпус и палуба

Материал корпуса: Fiberglass

Комплектация корпуса: Deep Vee

Цвет корпуса: Blue

Дизайнер корпуса: Sunseeker

Дизайнер экстерьера: Sunseeker

Информация о двигателе

Двигатели: 2

Производитель: Volvo

Модель: IPS 1200

Тип двигателя: Inboard

Тип топлива: Diesel

ПОДРОБНОЕ ОПИСАНИЕ

Overview

LOAN SHARK is a full-time captain maintained mint condition example of Sunseeker's popular Manhattan series. She boasts very impressive spaces for her size, with luxurious accommodations for up to 8 guests plus an oversized 5th crew cabin option. She also features the high performing and efficient joystick controlled IPS Drive option, along with a beautiful blue hull. The owner spared no expense and loaded this yacht with a jaw-dropping list of every available factory option and beyond! The yacht is currently available for inspection in Miami Beach, FL.

Sleek aggressive lines, oversized panoramic windows, rich satin cherry wood interior with wood flooring on deck and beige carpet below, granite countertops, and the latest in Navigational & Audio Visual Equipment follow guests in all areas. A major highlight is that the owner installed an extra strength upgraded custom Hardtop with a power sunroof Bimini, LED lighting and Sunseeker styled fiberglass side wings. If you are searching for the best-equipped late model 4 stateroom flying bridge Sunseeker on the market, look no further!

Manufacturer Provided Description

The Manhattan 63 is a perfect example of a boat that packs innovation, luxury and performance into an exceptionally graceful frame. The hull form has been specifically designed for IPS drives which produces fantastic results in performance, handling and economy. Upper deck galley, four staterooms with a midships full-beam master and very large hull-side windows. Saloon and entertainment space has been increased and enlarged and panoramic superstructure windows ensure a feeling of openness *All recent upgrades and optional equipment highlighted in red.

Salon

Satin Cherry Wood Interior Tattletale Alarm System Flatscreen Samsung 55" HD 3D TV Linked to GPS input Satellite TV & Samsung Blu Ray Player Blu-ray Player Bose DVD Lifestyle Surround Sound Granite Vanity tops throughout Roman Blinds Hardwood Flooring Fusion AUX Bluetooth Sounds controls Additional Fridge/ Ice Maker installed in Salon Teak Flooring with Satin finish to galley staircase in lower lobby. Additional Sockets Large dining table for 8 fixed outboard and loose inboard chairs Lower saloon seating premium leather Coffee table Drinks cabinet Stainless steel sliding cockpit door to aft deck DVD cinema surround system iPod radio for external speakers Overhead halogen lighting 24v Ambient lighting 2 x double AC socket Main switch panel (AC/DC) with circuit breaker protection and generator controls Scatter cushions Fitted carpet

Accommodations

Master Cabin, Aft: Premium Mattress Samsung 40" 3D HD TV Sat TV Samsung Blu Ray Player. Bose Lifestyle Surround Sound System. Roman Blinds Extra Sockets Digital Safe Double berth 2 reading lights 24v Bedside and outboard cupboards Settee Halogen overhead lighting 24v Panoramic side windows with opening portholes and curtains Double AC socket x 2 Fitted carpet Walk-in hanging wardrobe with mirror Door to en suite toilet/shower Master EnSuite Head: Rain Shower Electric toilet Granite counter top with soap dispenser Mirrored vanity unit Washbasin and tap Hot and cold water Toothbrush and glass holder Towel ring, towel rail and towels Separate shower compartment Extractor fan Halogen overhead light 24v Ambient lighting Opening porthole with mosquito screen and blind Shaver socket 240/110v VIP Forward Stateroom: Double berth Drawers and storage beneath Wardrobe Halogen overhead lights 24v 2 x reading lights 24v 2 x opening portholes with mosquito screens and curtains Deck hatch with screen Double 240v AC socket Flatscreen Samsung television with SAT TV Fitted carpet Door to ensuite toilet/shower Forward Ensuite Head: Shower and Toilet Electric toilet Granite counter top with soap dispenser Mirrored vanity unit Washbasin and tap Hot and cold water Toothbrush and glass holder Towel ring, towel rail and towels Separate shower compartment Extractor fan Halogen overhead light 24v Opening porthole with mosquito screen and blind Shaver socket 240/110v Starboard Guest Cabin: Custom Game Console AUX plugins. 2 single berths Bedside table with drawer 2 reading lights Under-berth stowage Full hanging mirrored wardrobe Overhead halogen lights Opening porthole with mosquito screen and curtain Double AC socket Door to en suite shower room Flatscreen television with SAT TV Fitted carpet Door to en suite toilet/shower Starboard Guest Shower and Toilet/Day Head: Electric toilet Granite counter top with soap dispenser Mirrored vanity unit Washbasin and tap Hot and cold water Toothbrush and glass holder Towel ring, towel rail and towels Separate shower compartment Extractor fan Halogen overhead light 24v Opening porthole with mosquito screen and blind Shaver socket 240/110v Port Guest Cabin: 2 single Pullman berths Bedside table locker with drawer 2 reading lights Under-berth stowage Full hanging mirrored wardrobe Overhead halogen lights Opening porthole with mosquito screen and curtain Double AC socket Flatscreen television with SAT TV Fitted carpet Crew Accommodations: Extra Large Crew Cabin options to be used as 5th Stateroom Crew Cabin w double bed, SAT TV, panoramic window, air conditioning. Additional storage cabinets installed. Miele Washer and Dryer

Fly Bridge

Twin Furuno Navnet 3D GPS Plotter. Custom Hardtop with electric sunroof installed by PB Towers. Helm Position with Twin mesh bolster seats. Cannister life raft mounted. Upgraded Gaggenau Grill, Fridge & Ice maker. Teak Decks Deflecting front screen Hydraulic steering Chrome steering wheel Duplicate engine controls and instrumentation Compass Trim tab control Echo sounder and speed log repeaters Bow thruster control Autopilot and GPS navigator controls 12v socket Instrument cover Upholstered seating Storage below seats Folding backrest upgraded Sunbathing area forward Stainless steel guard rails and grab rails Glass holders Radio/CD remote control External Marine Speakers. Low-level courtesy lights

Pilothouse

Twin Besenconi adjustable Leather electric helm seat FLIR Night Vision Thermal Camera Rearview LED Camera. 2 x Furuno NavNet 3D Radar/Plotter Volvo 7 inch dual station color displays. Volvo Penta DPS Dynamic positioning with GPS transponder and low speed joystick function. Simrad Autopilot AP28 Raymarine VHF radio dual station Airhorn upgrade to twin Kahlenberg. Sanchin Seachlight controls. Console with burl walnut type fascia Hydraulic steering Leather rimmed chrome steering wheel Analogue and digital engine instrumentation Electric speed and Raymarine depth sounder Rudder indicator Ritchie Compass Bow thruster control Windscreen wipers and washers Trim tab controls Cigar lighter 12v Hydraulic Opening helm side door Glass holders Hand-held fire extinguisher

Galley

Granite Countertops Miele Dishwasher. Sink and drainer Hot and cold water Electric refrigerator Second Fridge upgraded. Electric freezer Ceramic hob Hob extractor fan Microwave combination oven Rubbish bin 6 place crockery set 6 place cutlery set Cupboard and drawer storage Double AC socket x 2 Hand-held fire extinguisher First aid

Deck

Construction: Hand-laid GRP Gel coat including stripes Isophthalic polyester skin coat with powder bound mat Stitched multi-axial reinforced single-skin bottom Balsa-cored hull topsides and deck Hull stiffened with longitudinal stringers supported by transverse bulkheads and floors Deck: Dual Boarding ladder metal plate installations behind fiberglass. Epirb Delta anchor and 90m chain (galvanized) Dinghy Inflator and socket. Hydraulic Swim Platform w Flush Mounted Chocks installed for Tender Custom Mounting brackets installed on bow railing for paddleboards. Deck wash fresh water forward and aft. Additional pair of 10" Mooring cleats aft. Gunwale lighting Fittings all in stainless steel 8 deck cleats in stainless steel Electric winch and capstan 24v with deck and cockpit controls 24v Stemhead roller and anchor stop Self-draining chain locker-fender stowage Pulpit and cockpit rails in stainless steel Stainless steel fendering with rubber insert IMCO navigation lights 3 pantograph wipers 24v, windscreen washers Ensign staff and socket 6 fenders and 4 warps Remote spotlight 24v Curved safety glass windscreen Fresh water marina connection Dockside AC shore power connection Hot and cold swimming shower Teak-laid bathing platform Foldaway stainless steel swimming ladder 4 Aft Cockpit Toolkit Boat hook Mooring ropes x 4 Fenders x 6 Cockpit & Bow: Teak Folding Table telescopic w 4 Foldable Teak Chairs Exterior Sunbrite TV Boarding ladder mounting and door on both port and stbd. Upgraded electric BBQ Grill External Fusion marine speakers Forward sunbathing cushions with foldable backrests Fusion Speaker system added to forward / bow area. Canvas Package in Sunbrella Material Bow hose bib. Moulded staircase to flybridge with Carbon Fiber Hatch Transom storage locker Upholstered seating Transom safety gates Engine room access hatch Overhead lighting 24v Low-level courtesy lighting 24v Teak-laid cockpit and steps Boat hook Hand-held fire extinguishers Self-draining

Mechanical

Engine Compartment: Twin engines with 2 x separate fuel filters water separators 1 x fuel tank with electric sender unit Fresh water engine top-up hose Sound insulation throughout engine room Automatic fire extinguisher 2 x automatic bilge pumps 1 x automatic flood pump Bilge water high-level alarm Extractor fans 24v Manual bilge pump Electrical System: Cummins Onan 21.5KW Generator with underwater silent exhaust AC dockside connection Main DC and AC electrical circuits protected by re-settable circuit breakers Systems monitoring panel Galvanic isolator 6 batteries for engine starting 24v circuit 6 batteries for domestic power 24v circuit 2 batteries for generator starting 12v circuit Battery coupling system Battery switches controlled from locker in cockpit Alternator split charging system Battery charger for 24v circuits Battery charger for 12v circuits Water heater extra capacity AC outlet sockets throughout the boat 24v hand light and cable Spare bulbs and fuses 4 x towel sets Underwater Gear: 8 underwater lights. IPS Pod Drives for exceptional control and fuel efficiency. Rope Cutters added to front of the Propellers. High-performance bronze rudders and struts Seawater strainers x 2 main engines/ 1 x generator Seacocks on all underwater fittings Bow thruster 24v Stainless steel trimtabs (hydraulic) Full cathodic bonding system to zinc anodes Systems: Glendening Cablemaster Additional Holding Tank Capacity Additional Hot Water heater tank. Aluminium fresh water tank 24v fresh water pressure system Hot water tank 24v electric toilet system

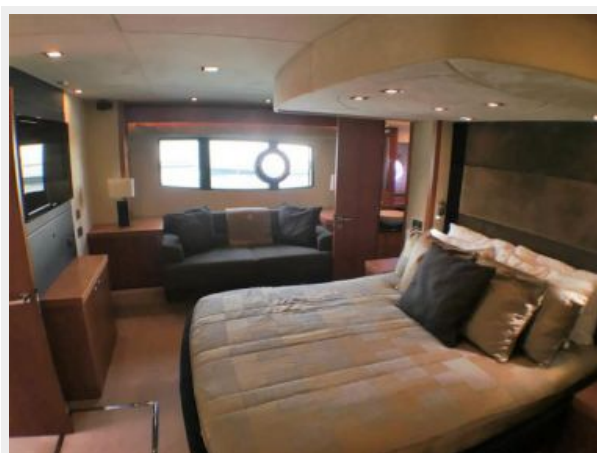
Исключения

При продаже яхты исключаются личные вещи владельца.

Отказ от ответственности

Компания предоставляет описание судна или яхты добросовестно, но не может гарантировать точность этой информации, а также не ручается за техническое состояние. Покупатель должен проинструктировать своих агентов или оценщиков исследовать представленную информацию более подробно, по собственному желанию. Продажа судна или яхты, изменение цены или снятие с продажи будет происходить без предварительного уведомления.

ФОТОГРАФИИ

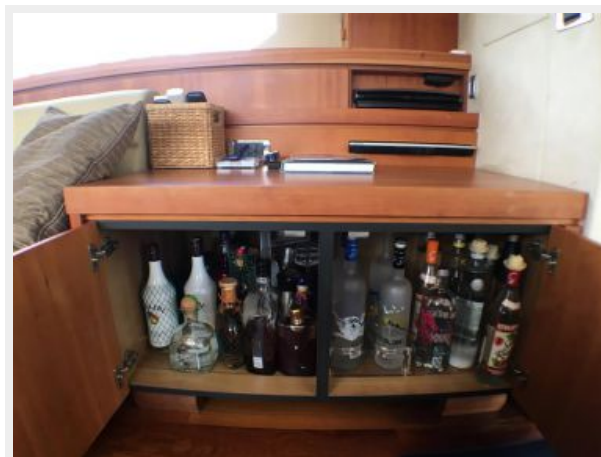




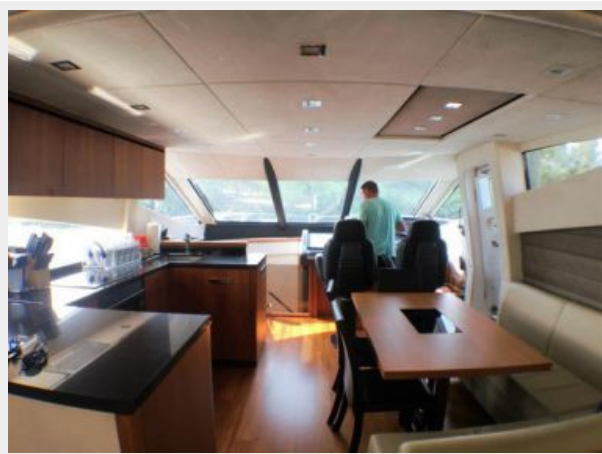


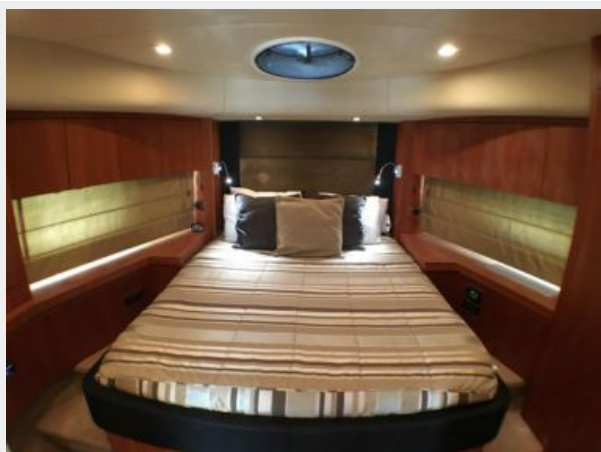
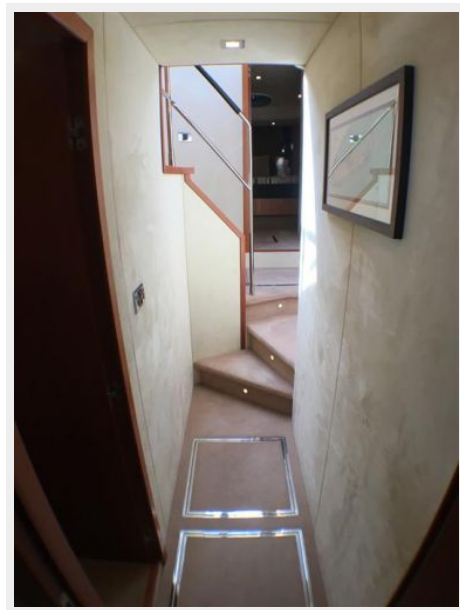
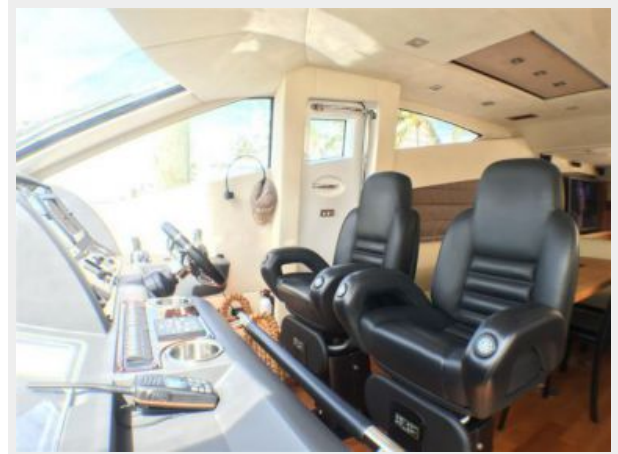




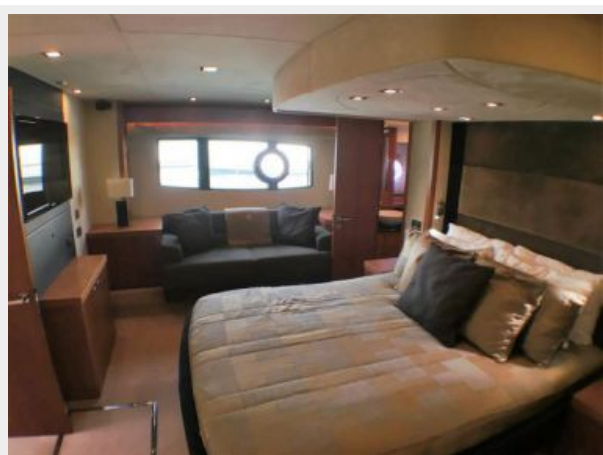


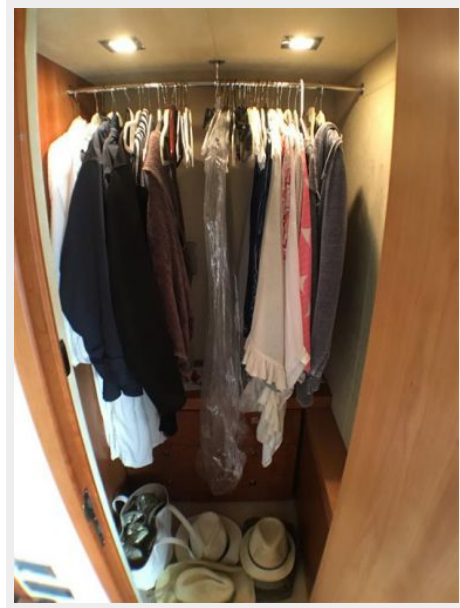


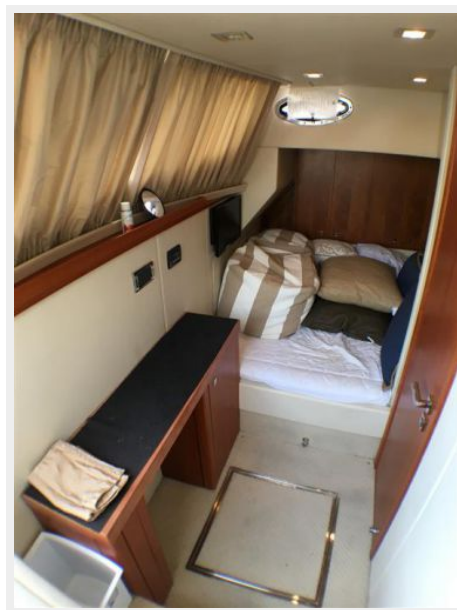


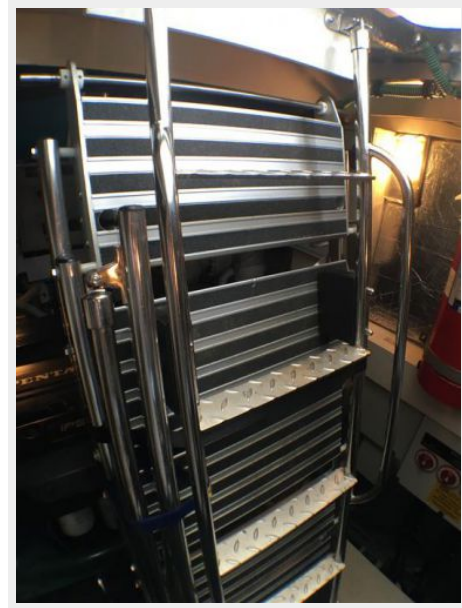
















КОНТАКТЫ

Андрей Шестаков (Andrey Shestakov) – ведущий яхтенный брокер отдела продаж яхт и судов компании Shestakov Yacht Sales Inc. Официальный представитель Shestakov Yacht Sales Inc. для русскоговорящих клиентов в центральном офисе компании в Майами/Форт Лодердейл/Флорида/США.

Контактная информация

Email: andrey@shestakovyachtsales.com

Web: shestakovyachtsales.com

Телефоны

Краснодарский край: **+7(918)465-66-44**

США, Майами, Флорида: **+1(954)274-4435**

Время работы

Понедельник – Суббота: **9:00 - 21:00**
EDT

Воскресенье: **Закрито**

Адрес



Harbour Towne Marina, 850 NE 3rd St,
STE 213, Dania, FL 33004