

MY GOUMADA — EGG HARBOR



Builder: EGG HARBOR

Year Built: 1990

Model: Sport Fisherman

Price: PRICE ON APPLICATION

Location: United States

LOA: 42' 2" (12.85m)

Beam: 15' 0" (4.57m)

Max Draft: 3' 10" (1.17m)

Cruise Speed: 17 Kts. (20 MPH)

Max Speed: 21 Kts. (24 MPH)

Our experienced yacht broker, Andrey Shestakov, will help you choose and buy a yacht that best suits your needs **My Goumada — EGG HARBOR** from our catalogue. Presently, at Shestakov Yacht Sales Inc., we have a wide variety of yachts available on our sale's list. We also work in close contact with all the big yacht manufacturers from all over the world.

If you would like to buy a yacht **My Goumada — EGG HARBOR** or would like help answering any questions concerning purchasing, selling or chartering a yacht, please call **+1(954)274-4435**

TABLE OF CONTENTS

| | |
|------------------------------|---|
| TABLE OF CONTENTS | 2 |
| SPECIFICATIONS | 4 |
| Overview | 4 |
| Basic Information | 4 |
| Dimensions | 5 |
| Speed, Capacities and Weight | 5 |
| Accommodations | 5 |
| Hull and Deck Information | 5 |
| Engine Information | 5 |
| DETAILED INFORMATION | 6 |
| Disclaimer | 6 |
| Exclusions | 6 |
| Disclaimer | 6 |
| PHOTOS | 7 |
| Bow View | 7 |
| Cockpit | 7 |
| Scopinich Chair | 7 |
| Tuna Door | 7 |
| Tackle & Prep Station | 7 |
| Locker | 7 |
| Flybridge | 8 |
| Pompanette Chairs | 8 |
| Helm | 8 |
| Flybridge Sink | 8 |
| Overhead Box | 8 |
| Flybridge Bench | 8 |
| Foredeck | 9 |
| Pulpit | 9 |

| | |
|------------------------|----|
| Salon | 9 |
| Port Salon | 9 |
| Icemaker | 9 |
| Galley | 9 |
| Starboard Salon 1 | 10 |
| Starboard Salon 2 | 10 |
| Additional AC | 10 |
| Master SR | 10 |
| Guest SR | 10 |
| Head with Stall Shower | 10 |
| Raritan Hotwater | 11 |
| Charger | 11 |
| 6-71ti Engines | 11 |
| Onan Genset | 11 |
| CONTACTS | 12 |
| Contact details | 12 |
| Telephones | 12 |
| Office hours | 12 |
| Address | 12 |

SPECIFICATIONS

Overview

This 42 Golden Egg Convertible is a nicely equipped and updated proven fish raiser, with large cockpit and comfortable roomy interior layout. Her notable features include:

- Pompanette helm seats
- Flybridge with sink and forward padded bench
- Updated Garmin 3210 and 740 electronics
- Large 100 square foot cockpit with awning
- Teak cover boards and tuna door
- Scopinich fighting chair
- Tournament outriggers
- Twin Detroit Diesel 6-71TI 485hp engine package (1290 hours)
- Onan 8kW generator (1536 hours)
- Additional LG air conditioning and GE dehumidifier units
- Updated salon with new coverings and pleated blinds
- 2 staterooms and 1 head layout
- Mid-level fully equipped galley
- ...and so much more!

She is turnkey and ready to fish or cruise the islands.

Basic Information

Category: Sport Fisherman

Sub Category: Convertible

Model Year: 1990

Year Built: 1990

Country: United States

Registration #: FL0016PA

Vessel Top: Half Tower

Fly Bridge: Yes

Cockpit: Yes

Dimensions

LOA: 42' 2" (12.85m)

Beam: 15' 0" (4.57m)

Max Draft: 3' 10" (1.17m)

Speed, Capacities and Weight

Cruise Speed: 17 Kts. (20 MPH)

Max Speed: 21 Kts. (24 MPH)

Displacement: 36300 Pounds

Water Capacity: 120 Gallons

Holding Tank: 30 Gallons

Fuel Capacity: 600 Gallons

Accommodations

Total Cabins: 2

Total Berths: 4

Sleeps: 6

Total Heads: 1

Hull and Deck Information

Hull Material: Fiberglass

Hull Configuration: Modified Deep Vee

Hull Color: White

Hull Finish: Plastic

Engine Information

Engines: 2

Manufacturer: Detroit Diesel

Model: 6-71ti

Engine Type: Inboard

Fuel Type: Diesel

DETAILED INFORMATION

Disclaimer

The Company and agent offer the details of this vessel in good faith but cannot guarantee or warrant the accuracy of this information nor warrant the condition of the vessel. A buyer should instruct his agents, or his surveyors, to investigate such details as the buyer desires validated. This vessel is offered subject to prior sale, price change, or withdrawal without notice.

Exclusions

Owner's personal belongings.

Disclaimer

The Company offers the details of this vessel or yacht in good faith but cannot guarantee or warrant the accuracy of this information nor warrant the condition of the vessel. A buyer should instruct his representatives, agents, or his surveyors, to investigate such details as the buyer desires validated. This vessel or yacht is offered subject to prior sale, price change, or withdrawal without notice.

PHOTOS

Bow View



Cockpit



Scopinich Chair



Tuna Door



Tackle & Prep Station



Locker



Flybridge



Pompanette Chairs



Helm



Flybridge Sink



Overhead Box



Flybridge Bench



Foredeck



Pulpit



Salon



Port Salon



Icemaker



Galley



Starboard Salon 1



Starboard Salon 2



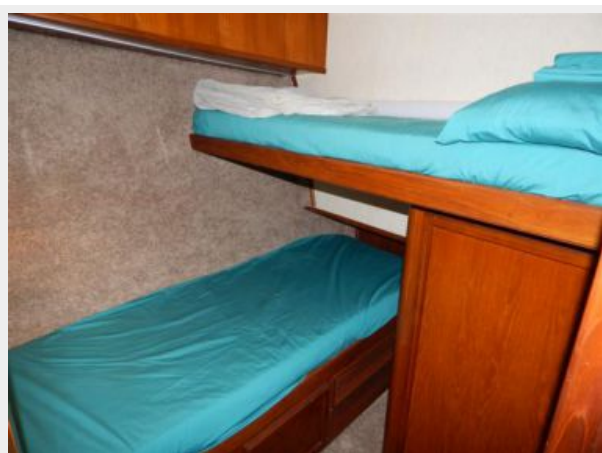
Additional AC



Master SR



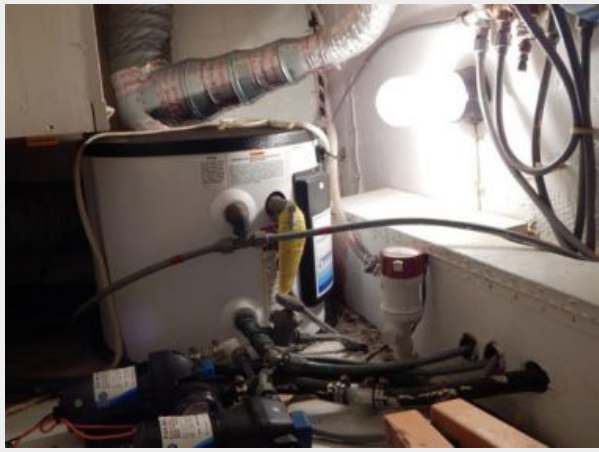
Guest SR



Head with Stall Shower



Raritan Hotwater



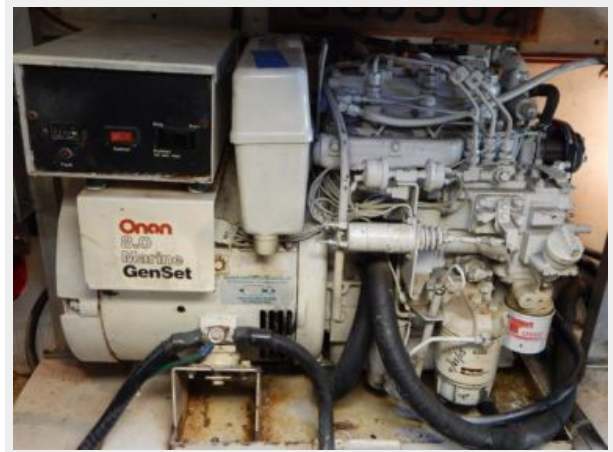
Charger



6-71ti Engines



Onan Genset



CONTACTS

Andrey Shestakov, leading yacht broker of the sales department of Shestakov Yacht Sales Inc. Shestakov Yacht Sales Inc., the official representative of the Miami/Fort Lauderdale FL headquarters.

Contact details

Email: andrey@shestakovyachtsales.com

Web: shestakovyachtsales.com/en/

Telephones

USA: +1(954)274-4435

Office hours

Monday – Saturday: **9:00 - 21:00** EDT

Sunday: **closed**

Address



Harbour Towne Marina, 850 NE 3rd St,
STE 213, Dania, FL 33004