

WASTIN' AWAY — VIKING



Builder: VIKING

Year Built: 1996

Model: Cruiser

Price: PRICE ON APPLICATION

Location: United States

LOA: 43' 0" (13.11m)

Beam: 15' 3" (4.65m)

Max Draft: 4' 3" (1.30m)

Cruise Speed: 24 Kts. (28 MPH)

Max Speed: 31 Kts. (36 MPH)

Our experienced yacht broker, Andrey Shestakov, will help you choose and buy a yacht that best suits your needs **Wastin' Away — VIKING** from our catalogue. Presently, at Shestakov Yacht Sales Inc., we have a wide variety of yachts available on our sale's list. We also work in close contact with all the big yacht manufacturers from all over the world.

If you would like to buy a yacht **Wastin' Away — VIKING** or would like help answering any questions concerning purchasing, selling or chartering a yacht, please call **+1(954)274-4435**

TABLE OF CONTENTS

TABLE OF CONTENTS	2
SPECIFICATIONS	3
Overview	3
Basic Information	3
Dimensions	3
Speed, Capacities and Weight	3
Accommodations	3
Hull and Deck Information	4
Engine Information	4
DETAILED INFORMATION	5
Mechanical and Engine Room	5
Navigation and Electronics	5
Interior Features	5
Exterior Features	5
Exclusions	5
Disclaimer	6
PHOTOS	7
CONTACTS	12
Contact details	12
Telephones	12
Office hours	12
Address	12

SPECIFICATIONS

Overview

New to the Market!

Basic Information

Category: Cruiser

Sub Category: Express

Model Year: 1996

Year Built: 1996

Country: United States

Vessel Top: Hardtop W/Tower

Dimensions

LOA: 43' 0" (13.11m)

Beam: 15' 3" (4.65m)

Max Draft: 4' 3" (1.30m)

Speed, Capacities and Weight

Cruise Speed: 24 Kts. (28 MPH)

Max Speed: 31 Kts. (36 MPH)

Gross Tonnage: 35000 Pounds

Water Capacity: 75 Gallons

Fuel Capacity: 550 Gallons

Accommodations

Total Cabins: 1

Sleeps: 2

Total Heads: 1

Hull and Deck Information

Hull Material: Fiberglass

Deck Material: Fiberglass

Hull Configuration: Modified V-Hull

Engine Information

Engines: 2

Manufacturer: Detroit Diesel

Model: 6V92TA

Engine Type: Inboard

Fuel Type: Diesel

DETAILED INFORMATION

Mechanical and Engine Room

Detroit Diesel 6V92TA 550 HP 900 Hours SMOH (2682 total hours) Twin Disc MG 506 gears with trolling valves Onan 8KW generator (3205 hours) Engine sync Cutlass bearings 1 year old Oil change system Emergency bilge pump plumbing Vacuflush head Premier garbage disposal Hot water heater Cable master ALL new fire extinguishers New epirb New bilge pumps and switches 50Amp service

Navigation and Electronics

Trac Vision Sat TV Northstar 6100I Simrad auto pilot AP20 Icon IC-302 VHF Icon IC-502 VHF "TWO" Garmin 7212 GPS with Chirp Transducer (NEW) Garmin XHD 4' radar antenna (NEW) Two Richie Compass (NEW) Sea 156 VHF/FM radio/telephone Clarion Marine CD/Radio with helm remote Sony Digital Audio surround sound receiver JL Audio speakers/subwoofer/amp (NEW) Seawatch FM antenna Seiki LED TV

Interior Features

TWO 12,000 BTU cabin AC's New GE fridge Ceran Princess stove top Frigidaire microwave New mattress

Exterior Features

Lewmar Windless (rebuilt) Jabsco Search light (NEW) Wolo Air horns (NEW) All new marker lights Ridgid LED Spreader lights (NEW) Revere 6 person life raft (NEW) Blue LED cockpit/step and helm lights TWO 18,000 BTU helm AC's Hynautic Shifter and throttle controls All new isinglass New cockpit cover New cockpit bolsters New upper and lower helm covers New tower seats and bolster Tower full gauge cluster start and stop buttons New rod holders Rupp outriggers Salt water wash down (new pump) Fresh water pump (new) Live well (new pump) Fish Box Transom door Swim platform Tackle box Cockpit sink Cockpit freezer (new pump) New wiper motor

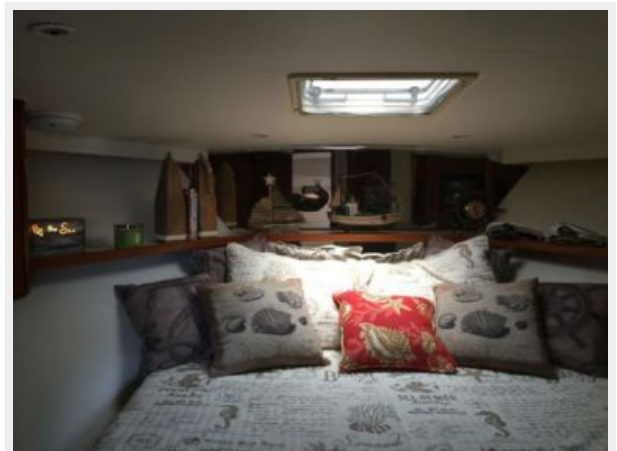
Exclusions

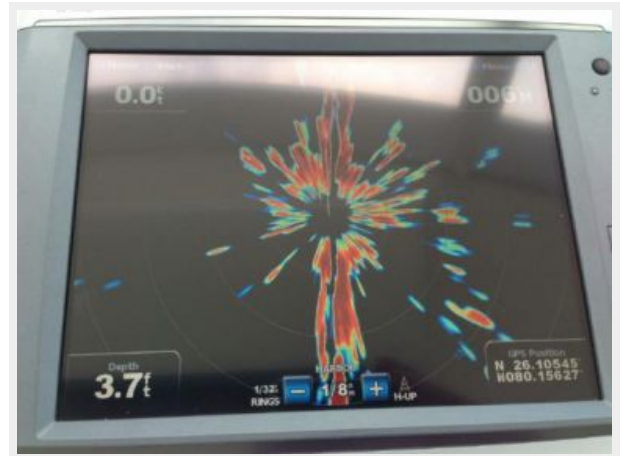
Owner's personal belongings.

Disclaimer

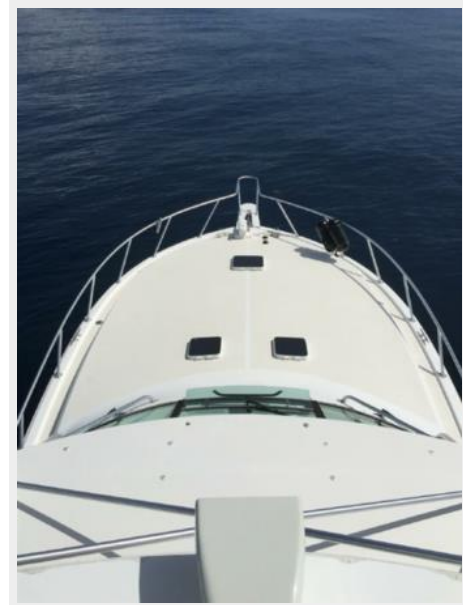
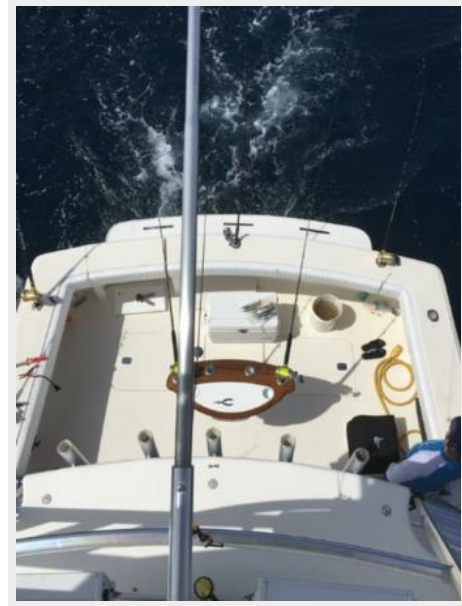
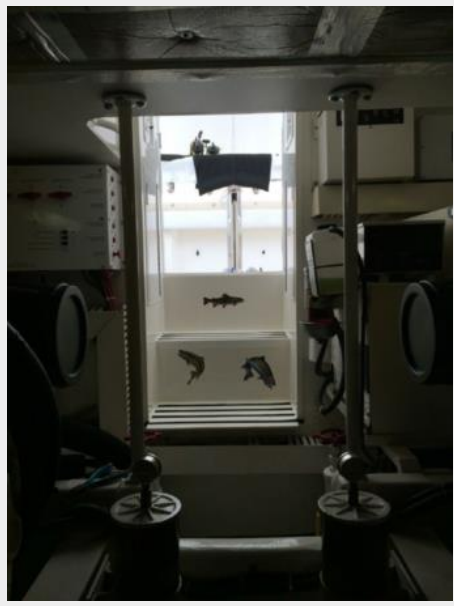
The Company offers the details of this vessel or yacht in good faith but cannot guarantee or warrant the accuracy of this information nor warrant the condition of the vessel. A buyer should instruct his representatives, agents, or his surveyors, to investigate such details as the buyer desires validated. This vessel or yacht is offered subject to prior sale, price change, or withdrawal without notice.

PHOTOS











CONTACTS

Andrey Shestakov, leading yacht broker of the sales department of Shestakov Yacht Sales Inc. Shestakov Yacht Sales Inc., the official representative of the Miami/Fort Lauderdale FL headquarters.

Contact details

Email: andrey@shestakovyachtsales.com

Web: shestakovyachtsales.com/en/

Telephones

USA: +1(954)274-4435

Office hours

Monday – Saturday: **9:00 - 21:00** EDT

Sunday: **closed**

Address



Harbour Towne Marina, 850 NE 3rd St,
STE 213, Dania, FL 33004