

DIALI-SI — HATTERAS



Builder: HATTERAS

Year Built: 2005

Model: Sport Fisherman

Price: PRICE ON APPLICATION

Location: Puerto Rico

LOA: 54' 0" (16.46m)

Beam: 17' 0" (5.18m)

Max Draft: 4' 2" (1.27m)

Cruise Speed: 30 Kts. (35 MPH)

Max Speed: 37 Kts. (43 MPH)

Our experienced yacht broker, Andrey Shestakov, will help you choose and buy a yacht that best suits your needs **Diali-si — HATTERAS** from our catalogue. Presently, at Shestakov Yacht Sales Inc., we have a wide variety of yachts available on our sale's list. We also work in close contact with all the big yacht manufacturers from all over the world.

If you would like to buy a yacht **Diali-si — HATTERAS** or would like help answering any questions concerning purchasing, selling or chartering a yacht, please call **+1(954)274-4435**

TABLE OF CONTENTS

TABLE OF CONTENTS	2
SPECIFICATIONS	3
Overview	3
Basic Information	3
Dimensions	3
Speed, Capacities and Weight	3
Accommodations	3
Hull and Deck Information	4
Engine Information	4
DETAILED INFORMATION	5
Interior Features	5
Electrical Equipment	5
Electronics	5
Outside Equipment and Extras	6
Exclusions	6
Disclaimer	6
PHOTOS	7
CONTACTS	15
Contact details	15
Telephones	15
Office hours	15
Address	15

SPECIFICATIONS

Overview

This vessel features a STD arrangement w/ 3 staterooms, 2 heads

Full Pipe welders Tuna Tower with molded tops and LED Blue/White/Red Lights

RUPP Triple Spreader Outriggers and Center Rigger

(2) Drawer style Sub Zero Freezers and Refrigerators

Basic Information

Category: Sport Fisherman

Model Year: 2005

Year Built: 2005

Country: Puerto Rico

Dimensions

LOA: 54' 0" (16.46m)

LWL: 46' 0" (14.02m)

Beam: 17' 0" (5.18m)

Max Draft: 4' 2" (1.27m)

Speed, Capacities and Weight

Cruise Speed: 30 Kts. (35 MPH)

Max Speed: 37 Kts. (43 MPH)

Water Capacity: 200 Gallons

Holding Tank: 100 Gallons

Fuel Capacity: 1250 Gallons

Accommodations

Total Cabins: 3

Total Heads: 2

Hull and Deck Information

Hull Material: Fiberglass

Engine Information

Engines: 1

Manufacturer: CAT

Model: C-30

Engine Type: Inboard

Fuel Type: Diesel

DETAILED INFORMATION

Interior Features

Seawater pump

Air conditioning

Electric bilge pump

Heating

Washing machine

Microwave oven

Refrigerator

Deep freezer

Battery charger

Hot water

Electric head

Water maker Satellite antenna

Esquimo machine

Autopilot

Electrical Equipment

Shore power inlet

Generator 17kw Onan

Electrical Circuit: 220V Inverter

Electronics

DVD player

CD player

Radio

Icom VHF

Depth sounder

Radar

Navigation center

Garmin GPS

Clarion stereo

Outside Equipment and Extras

Swimming ladder

Cockpit shower

Life raft

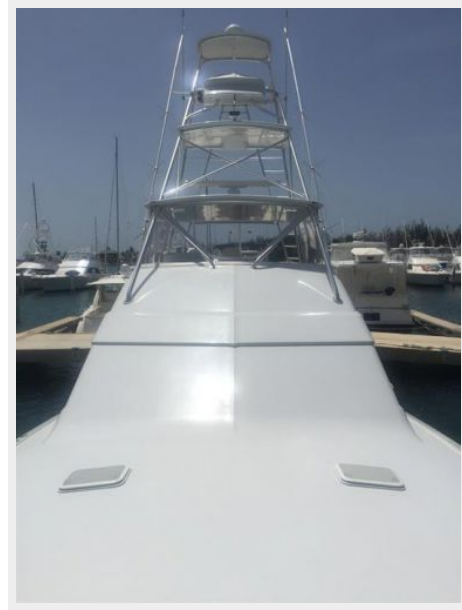
Exclusions

Owner's personal belongings.

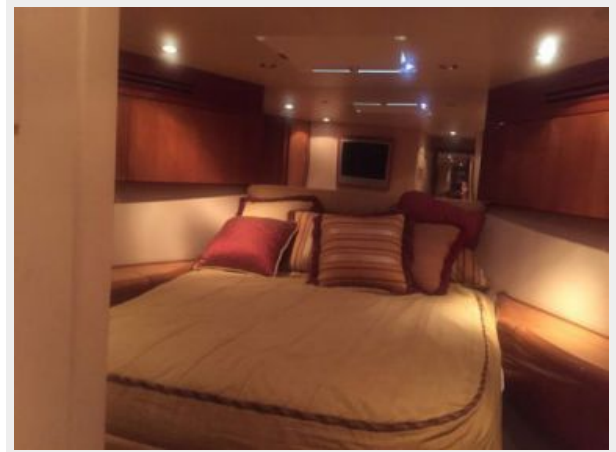
Disclaimer

The Company offers the details of this vessel or yacht in good faith but cannot guarantee or warrant the accuracy of this information nor warrant the condition of the vessel. A buyer should instruct his representatives, agents, or his surveyors, to investigate such details as the buyer desires validated. This vessel or yacht is offered subject to prior sale, price change, or withdrawal without notice.

PHOTOS

















CONTACTS

Andrey Shestakov, leading yacht broker of the sales department of Shestakov Yacht Sales Inc. Shestakov Yacht Sales Inc., the official representative of the Miami/Fort Lauderdale FL headquarters.

Contact details

Email: andrey@shestakovyachtsales.com

Web: shestakovyachtsales.com/en/

Telephones

USA: +1(954)274-4435

Office hours

Monday – Saturday: **9:00 - 21:00** EDT

Sunday: **closed**

Address



Harbour Towne Marina, 850 NE 3rd St,
STE 213, Dania, FL 33004