

INDIGO — SUNSEEKER



Builder: SUNSEEKER

Year Built: 2013

Model: Motor Yacht

Price: PRICE ON APPLICATION

Location: United States

LOA: 48' 0" (14.63m)

Beam: 14' 1" (4.29m)

Min Draft: 3' 0" (0.91m)

Max Draft: 2' 8" (0.81m)

Cruise Speed: 28 Kts. (32 MPH)

Max Speed: 34 Kts. (39 MPH)

Our experienced yacht broker, Andrey Shestakov, will help you choose and buy a yacht that best suits your needs **Indigo — SUNSEEKER** from our catalogue. Presently, at Shestakov Yacht Sales Inc., we have a wide variety of yachts available on our sale's list. We also work in close contact with all the big yacht manufacturers from all over the world.

If you would like to buy a yacht **Indigo — SUNSEEKER** or would like help answering any questions concerning purchasing, selling or chartering a yacht, please call **+1(954)274-4435**

TABLE OF CONTENTS

TABLE OF CONTENTS	2
SPECIFICATIONS	3
Overview	3
Basic Information	5
Dimensions	5
Speed, Capacities and Weight	5
Accommodations	5
Hull and Deck Information	5
Engine Information	6
PHOTOS	7
CONTACTS	21
Contact details	21
Telephones	21
Office hours	21
Address	21

SPECIFICATIONS

Overview

Combining space with pace, the Portofino 48 achieves a remarkable interior plan, with a full-beam owner's aft suite with huge windows to either side. Forward, there's a clever VIP suite in which the double bed cunningly swings apart to create twin single berths. The central saloon sits at the heart of the accommodation and enjoys a mix of grain, bold lacquers and deep glass options. The boat's profile is sleek with a long expanse of foredeck topped by cantilevering sunpads. The cockpit screen rises fairly well aft in a smooth and neatly engineered radius, behind which is a helm station with pilot seating, wetbar and full dining arrangement. **Boat Name** Indigo **Dimensions** LOA: 51 ft 8 in Beam: 14 ft 0 in LWL: 32 ft 5 in Minimum Draft: 3 ft 0 in Maximum Draft: 2 ft 8 in Dry Weight: 36445 lbs **Engines** Engine Brand: Volvo Engine Model: IPS 600 Drive Type: Other Cruising Speed: 28 knots Maximum Speed: 34 knots **Tanks** Fresh Water Tanks: (85 Gallons) Fuel Tanks: (349 Gallons) **Accommodations** Number of cabins: 2 Number of heads: 2 **Moulding**

- Deck: White
- Hull Band: Navy Blue
- Boot Top Line: Navy Blue
- Hull Below Waterline: White
- Bussell and Platform: White
- Platform: Hydraulic Lifting Platform with maximum lifting capacity of 300kg
- Hard Top Installation

Cockpit

- Electric canopy for aft cockpit
- Volvo Penta DPS: Dynamic positioning system including 7" color display, GPS transponder, engine software upgrade and the Joystick plus with low speed function
- Fresh water deck wash system with outlets forward and aft including deck wash hose kit
- Tender recovery roller system
- Cleats: Additional pair 10" Mooring Cleats fitted to the aft lower edge of the hull band facing aft
- Bose second zone. Two forward Speakercraft Aim8-Five Speakers and two aft Speakercraft Aim7-Two Speakers with two Bose SA3 Amplifiers Aux 3.5mm MP3 Socket and Bose remote control
- Marine electric BBQ grill
- Low level LED side deck lights - 6 per side, fitted to the coach roof facing the side deck
- Icemaker - Raritan fitted in wetbar
- Waeco Coolmatic

Saloon

- Oak Satin wood finishes

- Air conditioning Tropical satisfaction
- DVD Blu-ray CD - Bose Lifestyle V35 Surround entertainment System with Samsung Blu-ray player and Bose iPod dock
- Fridge Coolmatic - fitted under saloon companionway
- Teak Cabin Stair Treads

Forward Cabin

- Oak Satin wood finishes
- Air conditioning Tropical specification
- Fusion DVD/CD/MP3 Radio tuner linked to TV with stereo speakers with Apple iPod dock
- Roman blinds

Master Aft Cabin

- Oak Satin Wood Finish
- Air conditioning Tropical specification
- Roman Blinds
- Samsung 32" LED Television
- Fusion DVD/CD/MP3/Radio tuner linked to TV with stereo speakers with Apple iPod dock
- Key lock for master aft cabin door
- Safe- 2 brick - with digital lock

Console

- Volvo Penta DPS - Dynamic positioning system including 7" color display, GPS transponder, engine software upgrade and the Joystick plus with low speed function
- Raymarine E120W - 12.1" Widescreen Colour Radar Chartplotter with Raystar 125 GPS Diff receiver and 4kw 48" open scanner
- Raymarine E120W - 12.1" Widescreen additional color display on main console
- Raymarine Autopilot system ST70 color display
- Raymarine ST70 color Speed and Depth multi functional display
- Sanshin Twin Beam remote controlled Searchlight HR-1012
- Carbon fiber effect console panels
- Volvo Penta single 7" color display for IPS engines
- VHF with DSC - Icom IC-M604 VHF

Engine Room

- Underwater lights: Aqualuma LED wide angle x 4
- Diesel FuelMag conditioning system for engines and generator
- Generator Upgraded to Onan 11.5kw 60Hz
- BUILT TO US COAST GUARD REGULATIONS & SPECIFICATIONS

Disclaimer

The Company offers the details of this vessel in good faith but cannot guarantee or warrant the

accuracy of this information nor warrant the condition of the vessel. A buyer should instruct his agents, or his surveyors, to investigate such details as the buyer desires validated. This vessel is offered subject to prior sale, price change, or withdrawal without notice.

Seabob and Paddleboard not included in price

THIS VESSEL IS NOT DUTY PAID AND CANNOT BE SOLD TO US RESIDENTS IN US WATERS.

Basic Information

Category: Motor Yacht

Model Year: 2013

Year Built: 2013

Country: United States

Dimensions

LOA: 48' 0" (14.63m)

LWL: 32' 5" (9.88m)

Beam: 14' 1" (4.29m)

Min Draft: 3' 0" (0.91m)

Max Draft: 2' 8" (0.81m)

Speed, Capacities and Weight

Cruise Speed: 28 Kts. (32 MPH)

Max Speed: 34 Kts. (39 MPH)

Water Capacity: 85 Gallons

Fuel Capacity: 349 Gallons

Accommodations

Total Cabins: 2

Total Heads: 2

Hull and Deck Information

Hull Material: Fiberglass

Engine Information

Engines: 2

Manufacturer: Volvo Penta

Model: IPS 600

Fuel Type: Diesel

PHOTOS











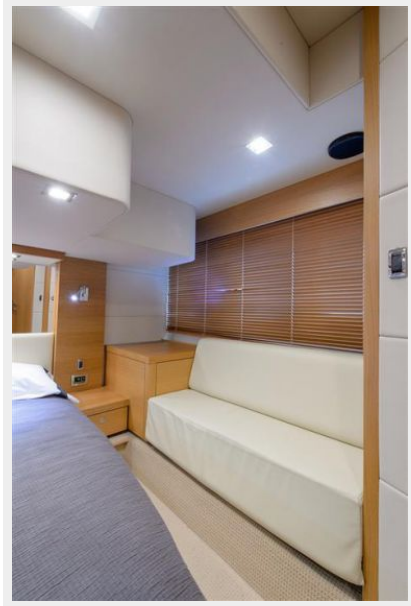


















CONTACTS

Andrey Shestakov, leading yacht broker of the sales department of Shestakov Yacht Sales Inc. Shestakov Yacht Sales Inc., the official representative of the Miami/Fort Lauderdale FL headquarters.

Contact details

Email: andrey@shestakovyachtsales.com

Web: shestakovyachtsales.com/en/

Telephones

USA: +1(954)274-4435

Office hours

Monday – Saturday: **9:00 - 21:00** EDT

Sunday: **closed**

Address



Harbour Towne Marina, 850 NE 3rd St,
STE 213, Dania, FL 33004