

## POWER PLAY — SUNSEEKER



**Builder:** SUNSEEKER

**Year Built:** 2011

**Model:** Cruiser

**Price:** PRICE ON APPLICATION

**Location:** United States

**LOA:** 64' 0" (19.51m)

**Beam:** 16' 3" (4.95m)

**Min Draft:** 4' 10" (1.47m)

**Cruise Speed:** 28 Kts. (32 MPH)

**Max Speed:** 35 Kts. (40 MPH)

Our experienced yacht broker, Andrey Shestakov, will help you choose and buy a yacht that best suits your needs **Power Play — SUNSEEKER** from our catalogue. Presently, at Shestakov Yacht Sales Inc., we have a wide variety of yachts available on our sale's list. We also work in close contact with all the big yacht manufacturers from all over the world.

If you would like to buy a yacht **Power Play — SUNSEEKER** or would like help answering any questions concerning purchasing, selling or chartering a yacht, please call **+1(954)274-4435**

---

# TABLE OF CONTENTS

---

TABLE OF CONTENTS	2
SPECIFICATIONS	3
Overview	3
Basic Information	3
Dimensions	3
Speed, Capacities and Weight	3
Accommodations	4
Hull and Deck Information	4
Engine Information	4
DETAILED INFORMATION	5
Cockpit	5
Salon	5
Galley	5
Master Head	5
Forward Guest Cabin	6
Starboard Guest Cabin	6
Mechanical & Electrical	6
Electronics & A/V equipment	7
Exclusions	7
Exclusions	7
Disclaimer	7
PHOTOS	8
CONTACTS	16
Contact details	16
Telephones	16
Office hours	16
Address	16

---

# SPECIFICATIONS

---

## Overview

---

A classic example of Sunseeker design ingenuity, the Predator 64 offers luxury accommodations to suit every style. Entertain your guests in secluded luxury or thrill to the high-speed open air exhilaration provided by the sliding saloon roof. At full speed, the 35 knots from twin CAT C-18's (@1100 hp each) gets you wherever you want to go – fast. While the ride thrills, the Sunseeker designed hull and deck provide an impressive soft ride sensation, insuring guests enjoy sunpad relaxation under way as well as at rest.

## Basic Information

---

**Category:** Cruiser

**Sub Category:** Express

**Model Year:** 2011

**Year Built:** 2011

**Country:** United States

**Vessel Top:** Electronic Sunroof

**Cockpit:** Yes

## Dimensions

---

**LOA:** 64' 0" (19.51m)

**Beam:** 16' 3" (4.95m)

**Min Draft:** 4' 10" (1.47m)

## Speed, Capacities and Weight

---

**Cruise Speed:** 28 Kts. (32 MPH)

**Max Speed:** 35 Kts. (40 MPH)

**Displacement:** 63800 Pounds

**Water Capacity:** 185 Gallons

**Fuel Capacity:** 793 Gallons

---

## Accommodations

---

**Total Cabins:** 3

**Total Heads:** 3

---

## Hull and Deck Information

---

**Hull Material:** Fiberglass

**Hull Configuration:** Deep Vee

---

## Engine Information

---

**Engines:** 2

**Manufacturer:** Caterpillar

**Model:** C-18

**Engine Type:** Inboard

**Fuel Type:** Diesel

---

## DETAILED INFORMATION

---

### Cockpit

---

- Centerline bench seat w/sunpad aft
- Fold out table
- Bench seat to starboard
- Black canvas electric canopy for aft cockpit
- Gaggenau lava coal electric BBQ grill
- Alpine Cockpit speaker system : Alpine 6 disc CD/MP3 Autochanger, 4 waterproof Alpine 80 Watt 2 way marine speakers w/Alpine 4 channel amp. One 10" Alpine Sub woofer with amp
- Teak Deck

### Salon

---

- L-settee w/dining table
- Window mullions
- Port Side bench settee
- Helm chair
- Helm bench seat
- Sliding Door Curtain
- Scatter Cushions
- Bar storage
- 16000 BTU Tropical spec A/C
- Bose Lifestyle 48 DVD/CD surround sound system
- Wenge satin floor finish

### Galley

---

- Storage cabinets
- SS Sink
- Cooktop
- Refrigerator and freezer
- Miele Intregrated Slimline G818 SCVi dishwasher
- Microwave oven

### Master Head

---

- Amidship, full beam

- Centerline walk around queen berth
- Night stands
- Vanity w/stool
- Carpeting
- Venetian blinds
- Outboard shelving
- TV w/Bose 321 series II CD/DVD Cinema Surround sound system
- En Suite head w/shower

---

## Forward Guest Cabin

---

- Centerline double berth w/drawer storage below
- Outboard shelving and lockers
- Hanging locker
- En Suite head w/shower

---

## Starboard Guest Cabin

---

- Over/under twin berths
- Hanging locker
- Drawer storage
- En Suite head w/shower

---

## Mechanical & Electrical

---

- Sleipner 10.7 hp 24V bow & stern thrusters
- Sanshin HR-1012 twin beam remote controlled searchlight
- 3 x 16,000 BTU Tropical spec A/C
- 8,000 BTU A/C for crew cabin aft
- Electric BBQ Grill - Gaggenau lava coal
- Dimmer switches on interior lighting
- Low level white LED side deck lights 8 per side
- Additional AC 110v double socket in the Deck Salon
- Additional AC 110v double socket in the Galley
- Fire and bilge flood monitoring alarm system 6 zone
- 4 x Aqualuma white LED wide angle Series 6 white LED underwater lighting
- Lewmar Anchor winch
- Glendinning Cablemaster - 1 x power feed and recovery of AC shorepower cable
- Diesel FuelMag conditioning system for engines FM1500 and generator FM500

---

## Electronics & A/V equipment

---

- Furuno Navnet 3D 12" color radar/plotter w/4' 6kW open scanner and GPS 330 antenna
- Bose Lifestyle 48 DVD/CD Surround System
- Bose 321 series II CD/DVD Cinema Surround sound system linked to master cabin TV
- Alpine Cockpit speaker system upgrade
- Alpine 6 disc CD/MP3 Autochanger
- 4 Waterproof Alpine 80 Watt 2 way marine speakers with Alpine 4 channel amp
- 10" Alpine Sub woofer with amp

---

## Exclusions

---

- Two outside chairs
- Dinghy boat in Garage
- Yacht controllers
- Frigid cooler
- Linens and pillows
- Marquipt ladder
- Tide slider at deck
- KVH HD 7 HD marine satellite system

---

## Exclusions

---

Owner's personal belongings.

---

## Disclaimer

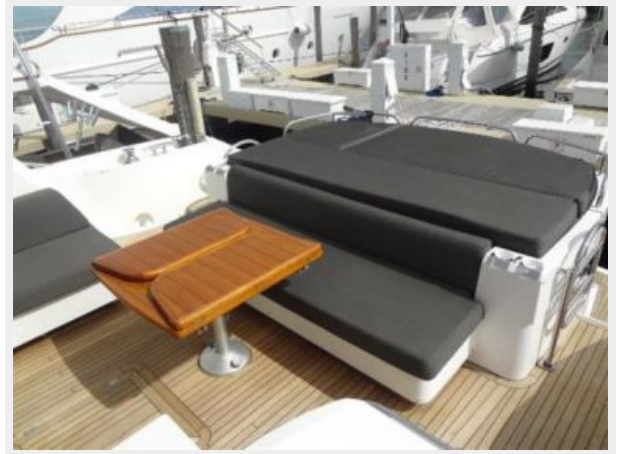
---

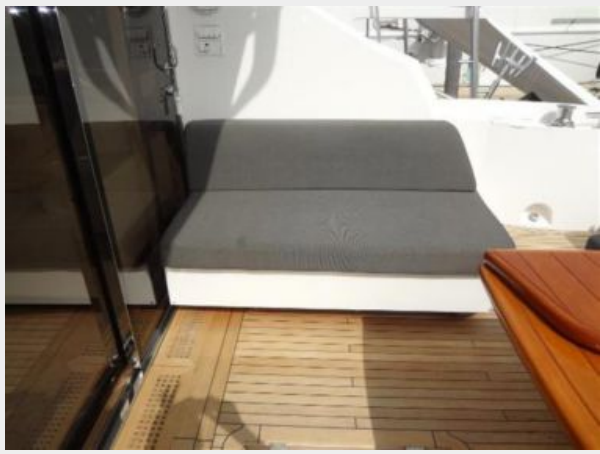
The Company offers the details of this vessel or yacht in good faith but cannot guarantee or warrant the accuracy of this information nor warrant the condition of the vessel. A buyer should instruct his representatives, agents, or his surveyors, to investigate such details as the buyer desires validated. This vessel or yacht is offered subject to prior sale, price change, or withdrawal without notice.

# PHOTOS





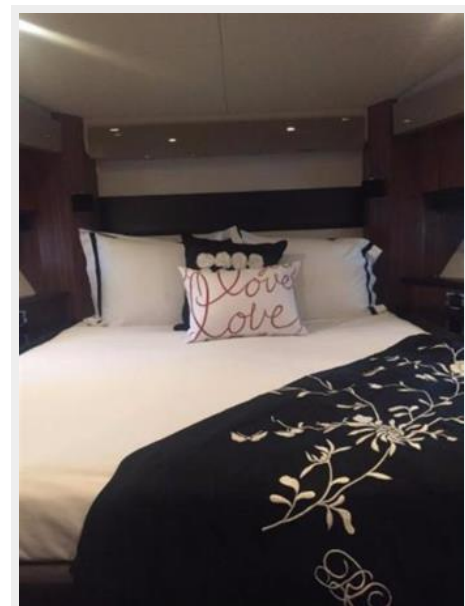


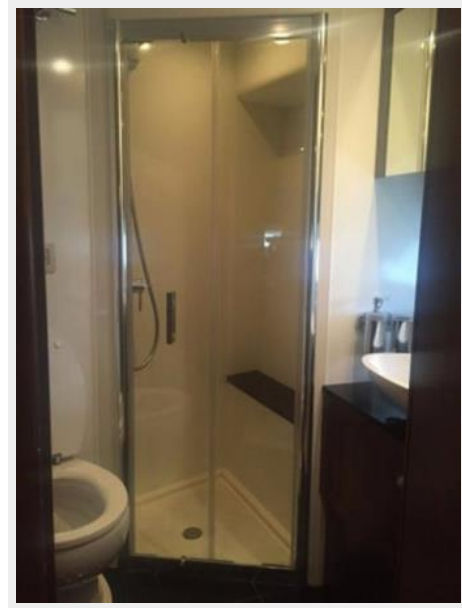












# CONTACTS

---

Andrey Shestakov, leading yacht broker of the sales department of Shestakov Yacht Sales Inc. Shestakov Yacht Sales Inc., the official representative of the Miami/Fort Lauderdale FL headquarters.

## Contact details

---

Email: [andrey@shestakovyachtsales.com](mailto:andrey@shestakovyachtsales.com)

Web: [shestakovyachtsales.com/en/](http://shestakovyachtsales.com/en/)

## Telephones

---

USA: +1(954)274-4435

## Office hours

---

Monday – Saturday: **9:00 - 21:00** EDT

Sunday: **closed**

## Address

---



Harbour Towne Marina, 850 NE 3rd St,  
STE 213, Dania, FL 33004