

AZIMUT 43S — AZIMUT



Builder: [AZIMUT](#)

Year Built: 2008

Model: Motor Yacht

Price: PRICE ON APPLICATION

Location: Mexico

LOA: 43' 10" (13.36m)

Beam: 13' 10" (4.22m)

Max Draft: 3' 9" (1.14m)

Cruise Speed: 29 Kts. (33 MPH)

Max Speed: 33 Kts. (38 MPH)

Our experienced yacht broker, Andrey Shestakov, will help you choose and buy a yacht that best suits your needs **Azimut 43S — AZIMUT** from our catalogue. Presently, at Shestakov Yacht Sales Inc., we have a wide variety of yachts available on our sale's list. We also work in close contact with all the big yacht manufacturers from all over the world.

If you would like to buy a yacht **Azimut 43S — AZIMUT** or would like help answering any questions concerning purchasing, selling or chartering a yacht, please call **+1(954)274-4435**

TABLE OF CONTENTS

TABLE OF CONTENTS	2
SPECIFICATIONS	3
Overview	3
Basic Information	3
Dimensions	3
Speed, Capacities and Weight	3
Accommodations	3
Hull and Deck Information	3
Engine Information	4
DETAILED INFORMATION	5
Accommodations	5
Galley	5
Salon	5
Wheelhouse	5
Master Stateroom	6
Guest Stateroom	6
Electrical	6
Electronics & Navigation	6
Disclaimer	6
Exclusions	6
Disclaimer	6
PHOTOS	8
CONTACTS	14
Contact details	14
Telephones	14
Office hours	14
Address	14

SPECIFICATIONS

Overview

2008 Azimut 43S @ Cancun Quintana Roo

Basic Information

Category: Motor Yacht

Model Year: 2008

Year Built: 2008

Country: Mexico

Dimensions

LOA: 43' 10" (13.36m)

Beam: 13' 10" (4.22m)

Max Draft: 3' 9" (1.14m)

Speed, Capacities and Weight

Cruise Speed: 29 Kts. (33 MPH)

Max Speed: 33 Kts. (38 MPH)

Displacement: 33069.3393 Pounds

Water Capacity: 132 Gallons

Holding Tank: 35 Gallons

Fuel Capacity: 290 Gallons

Accommodations

Total Cabins: 2

Total Berths: 2

Sleeps: 4

Total Heads: 2

Hull and Deck Information

Hull Material: GRP

Engine Information

Engines: 2

Manufacturer: Volvo

Model: D6 IPS

Engine Type: Inboard

Fuel Type: Diesel

DETAILED INFORMATION

Accommodations

Sport yacht that has a great package in a contained size. It has two staterooms, a full galley, two heads, a beautiful salon w/an incredible sunroof and a cockpit to die for, as well as, a sunbathing area at the bow. Bow Thruster Plataforma Hidráulica Scala Opacmare

Galley

A fully equipped Galley in the incomparable Italian style, sunbathed in natural light. Among its many features are: - Extraction hood beneath wall cabinet - wooden flooring - opening porthole - steel top - Appliances include: large sink, triple-burner cook top with railing, garbage bin, microwave oven+grill & 130 litre fridge/freezer.

Salon

Italian design and luxury bathes the Saloon. With generous use of wood and rich fabrics, a sophisticated atmosphere is created to cuddle the owner and friends. Special mention deserves the enormous sunroof that bathes the Saloon in sunlight and creates an incredible inside-outside feeling. The Saloon has two sofas facing each other: one is an L-shaped sofa and the other one is love-seat. In the centre there is a wood table that opens out for six people. Among the features there are: - Aft port side unit for TV, dishes, cutlery & glasses - Radio & CD player w/remote control connected to 2 speakers + 2 more in the cockpit - Ceiling lamps - Curtains and carpeting

Wheelhouse

There isn't another vessel in this size that can boast of a more beautiful helm station than this one. The pilot console is fashioned in crystal, steel and high technology. Features: - Double seat w/manual 2-position back rest - Adjustable helm wheel - Engine check - manoeuvring joystick - navigation instruments - electrical panel - engine indicators - compass - trim angle indicator - trim tab indicators - water level indicator - fuel level indicator - 12V socket - chain metre counter - carpeting - wheelhouse cabinet w/charts table in crystal glass Switches for: - horn - chain washdown - wipers - trim tabs - alarm silencer - windscreen - alarms test - navigation lights - engine room ventilators Controls for: - bilges - shore power sockets - blowers - navigation lights Alarms for: - bilges - high level waters (grey & black) - low battery level - water in fuel - engine alarms

- helm seat lighting

Master Stateroom

Natural fabric and Wengé wood paneling embody a new taste in sporty elegance. Located towards the bow, it features a double bed w/ key/change trays integrated into the headboard and two reading lights. Natural light pours through the windows located at both sides, gifting the owner with a splendid ocean view. Among the features are: - Emergency hatch in ceiling - 2 show lockers at bed side - starboard wardrobe w/interior lights and hanging rail - cedar interior - drawer unit + 2 drawers under bed - ceiling lamp w/indirect lighting - port wardrobe w/shelves & interior mirror - carpeting & curtains

Guest Stateroom

Sensible, thoughtful design shows itself in the sliding beds and wide windows. Features: - 2 reading lamps - ceiling lamps - built-in wardrobe w/shelves & hanging rail & cedar interior - 2 drawers under sliding bed - opening porthole plus 4-fixed square windows - carpeting & curtains

Electrical

- Electrical system 220/110V - 60Hz - 220/110V - 50A shore power inlet - 220/110V - 60Hz generator (13Kw) - Tropical A/C Webasto w/controls (40,000BTU) - double racor fuel filters for generator

Electronics & Navigation

- VHF radio - Raymarine ST6002 plus Autopilot - Raymarine ST60 TRIDATA depth & speed indicator - Raystar 120 differential LP-ST GPS mast - Raymarine Autopilot System

Disclaimer

The Company offers the details of this vessel in good faith but cannot guarantee or warrant the accuracy of this information nor warrant the condition of the vessel. A buyer should instruct his agents, or his surveyors, to investigate such details as the buyer desires validated. This vessel is offered subject to prior sale, price change, or withdrawal without notice.

Exclusions

Owner's personal belongings.

Disclaimer

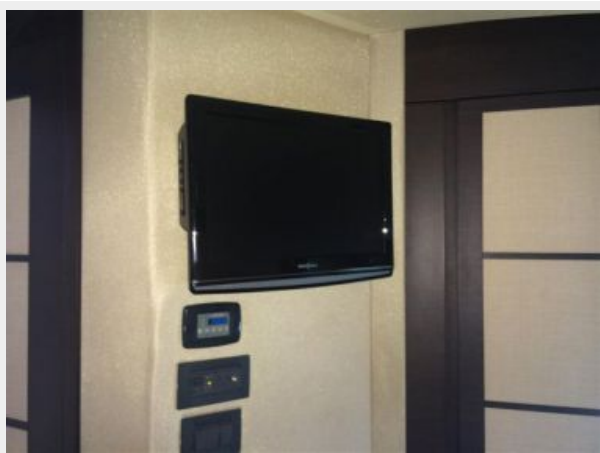
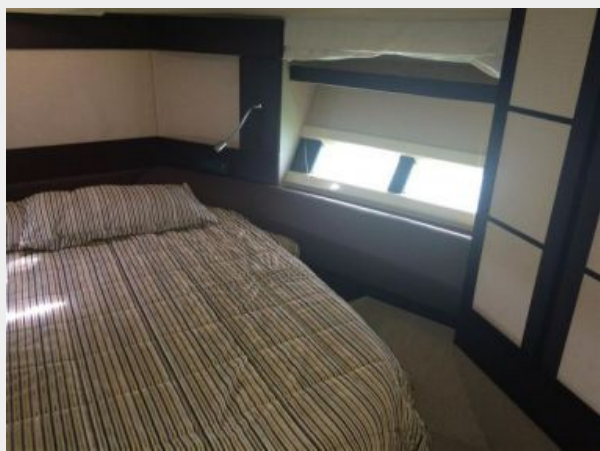
The Company offers the details of this vessel or yacht in good faith but cannot guarantee or warrant the accuracy of this information nor warrant the condition of the vessel. A buyer should instruct his representatives, agents, or his surveyors, to investigate such details as the buyer desires validated. This vessel or yacht is offered subject to prior sale, price change, or withdrawal without notice.

PHOTOS













CONTACTS

Andrey Shestakov, leading yacht broker of the sales department of Shestakov Yacht Sales Inc. Shestakov Yacht Sales Inc., the official representative of the Miami/Fort Lauderdale FL headquarters.

Contact details

Email: andrey@shestakovyachtsales.com

Web: shestakovyachtsales.com/en/

Telephones

USA: +1(954)274-4435

Office hours

Monday – Saturday: **9:00 - 21:00** EDT

Sunday: **closed**

Address



Harbour Towne Marina, 850 NE 3rd St,
STE 213, Dania, FL 33004