

## GUNGNIR OTTAVA — CANTIERI DI PISA



**Builder:** CANTIERI DI PISA

**Year Built:** 1996

**Model:** Motor Yacht

**Price:** PRICE ON APPLICATION

**Location:** France

**LOA:** 106' 4" (32.40m)

**Beam:** 23' 8" (7.19m)

**Max Draft:** 6' 5" (1.95m)

**Cruise Speed:** 25 Kts. (29 MPH)

**Max Speed:** 28 Kts. (32 MPH)

Our experienced yacht broker, Andrey Shestakov, will help you choose and buy a yacht that best suits your needs **GUNGNIR OTTAVA — CANTIERI DI PISA** from our catalogue. Presently, at Shestakov Yacht Sales Inc., we have a wide variety of yachts available on our sale's list. We also work in close contact with all the big yacht manufacturers from all over the world.

If you would like to buy a yacht **GUNGNIR OTTAVA — CANTIERI DI PISA** or would like help answering any questions concerning purchasing, selling or chartering a yacht, please call **+1(954)274-4435**

---

# TABLE OF CONTENTS

---

TABLE OF CONTENTS	2
SPECIFICATIONS	3
Overview	3
Basic Information	3
Dimensions	3
Speed, Capacities and Weight	3
Accommodations	4
Hull and Deck Information	4
Engine Information	4
DETAILED INFORMATION	5
Overview	5
Accommodation	5
Communications and navigational equipment	5
Mechanical, propulsion and engine room equipment	6
Exclusions	6
Disclaimer	6
PHOTOS	7
CONTACTS	10
Contact details	10
Telephones	10
Office hours	10
Address	10

---

# SPECIFICATIONS

---

## Overview

---

GUNGNIR OTTAVA is is the last Cantieri Di Pisa Akhir 32S custom built wooden hull with very little use over the years. Her extremely low engine hours under 600hrs, spacious layout and flybridge make her a very attractive proposal. She received a full new paintjob in 2014, is constructed to Lloyds Class and her VAT is paid. Very attractively priced and the Owner is a keen seller.

## Basic Information

---

**Category:** Motor Yacht

**Sub Category:** Raised Pilothouse

**Model Year:** 1996

**Year Built:** 1996

**Refit Year:** 2013

**Refit Type:** Full hull & superstructure paintjob, Hull sanding, Gearbox revision, Aircoditioning revision

**Country:** France

**Vessel Top:** Raised Pilothouse

**Fly Bridge:** Yes

## Dimensions

---

**LOA:** 106' 4" (32.40m)

**Beam:** 23' 8" (7.19m)

**Max Draft:** 6' 5" (1.95m)

## Speed, Capacities and Weight

---

**Cruise Speed:** 25 Kts. (29 MPH)

**Cruise Speed Range:** 500

**Max Speed:** 28 Kts. (32 MPH)

**Displacement:** 231485.3751 Pounds

**Gross Tonnage:** 188 Pounds

**Water Capacity:** 792.516156 Gallons

**Holding Tank:** 264.172052 Gallons

**Fuel Capacity:** 3962.58078 Gallons

---

## Accommodations

---

**Total Cabins:** 4

**Sleeps:** 8

**Total Heads:** 7

**Crew Cabin:** 3

**Crew Berths:** 4

**Crew Sleeps:** 4

**Crew Heads:** 2

---

## Hull and Deck Information

---

**Hull Material:** Mahogany

**Deck Material:** Teak

**Hull Configuration:** Planing

**Hull Finish:** Plastic

**Exterior Designer:** DESIGN STUDIO  
SPADOLINI

**Interior Designer:** Pier-Luigi Spadolini

---

## Engine Information

---

**Engines:** 2

**Manufacturer:** MTU

**Model:** 12V 396 TE94

**Engine Type:** Inboard

**Fuel Type:** Diesel

---

# DETAILED INFORMATION

---

## Overview

---

GUNGNIR OTTAVA is the last Cantieri Di Pisa Akhir 32S custom built wooden hull with very little use over the years. Her extremely low engine hours under 600hrs, spacious layout and flybridge make her a very attractive proposal. She received a full new paintjob in 2014, is constructed to Lloyds Class and her VAT is paid. Very attractively priced and the Owner is a keen seller.

## Accommodation

---

The Main salon welcomes you through an electric sliding door. Once inside, two U-shaped sofas with a free form coffee table greet you upon entry to starboard with the entertainment center to port. Just aft of the galley, the 10 guest dining salon is private. The owner's suite houses a king sized bed and is flanked by night tables of ample size and there is built-in cabinetry that wraps around the port side bulkhead. There is a vanity table with stool and ample closet space. The ensuite bath area has mostly wooden flooring and white marble countertops. On the inboard side is a full size jacuzzi tub. To starboard is a double sink with a large mirror. The VIP stateroom has a built-in closet, settee, and an ensuite bathroom. The bed has night tables and sconce type wall lighting on each side. There is burl wood cabinetry to port and starboard and a make-up vanity / desk. There are two port lights on either side of the sleeping area and one port light on each side of the head. Two Twin Guest staterooms both have two single berths that share a night stand. The ensuite heads have a vanity with mirror, a plexiglass front stand-up shower. The flooring and countertops are marble with inlays. There is one opening port light in the head. In the crew quarters, aft to port is the captain's cabin which has an oversized berth, desk, hanging locker, and ensuite with shower and toilet. The captain's area has an opening port and is fully air conditioned. The aft cabin of the crew quarters consists of an upper and lower berth on the starboard side. There is an opening port light in the head and in the berth area. On the starboard side is another crew cabin with one berth. Aft and down 2 steps is the head with a vanity sink with mirror, a toilet and a telephone shower.

## Communications and navigational equipment

---

Furuno video depth sounder Furuno autopilot 72mi Furuno radar Furuno GP3100 Mark II GPS plotter Furuno FS1550 IT SSB radio Robertson trip log ( speed and distance log ) speed/time/leg indicator Panasonic closed circuit monitor security system Furuno SM7000 VHF radio Panasonic 1232 telephone system Magnetic compass 360 degree wind speed indicator Windshield washer and wiper system with 3 wipers 2 Sanshin spot lights with controllers Clock & barometer Just aft of the dining salon but below the pilothouse are the on-deck AC and DC power panels.

## Mechanical, propulsion and engine room equipment

2 x MTU 12V 396 TE94 have logged under 600 hours 2) Racor 1000 (sets of 3) separator fuel filters with a 208 V fuel transfer pump Stainless steel fold-down sink Fuel shut-off valve Fuel gauge for 2 tanks G & R bilge pump Air conditioning electronic controller Rule 3700 24V DC bilge pumps with float switches throughout boat Bow thruster with 12" tube Work benches over port & starboard generators G&R fire pump w/hand held extinguishers fire control system (pump has various outlets) Water softener / water filtration system 2 Raw water sea strainers and intakes for generators Smoke alarm 2 Raw water sea strainers and intakes for main engines Small air compressor w/accumulator tank and drain High water alarm Hydraulic wheel steering (pilothouse / flybridge) Main engine exhaust system ZF transmission Water intake manifold 2 18" x 78" trim tabs each w/2 hydraulic cylinders AC powered fuel transfer pump with control panel Pick-up for engine driven bilge pump Marinco watermaker 12 Vetus batteries w/disconnects for engines & generators 24V DC & hand transfer of priming pump for fuel to day tank AC & DC lighting system switches Hydraulic pump Hydraulic system board indicator panel Heat exchanger for hydraulic fluid w/circulating pump for raw water Port & starboard generator control panel 2 24V DC waste water pumps Natural air induction system w/shutdown dampener Hot water (circulating) pump Engine temperature alarm AC & DC fresh water pump w/large accumulator tank CO2 fire alarm with panel Circuit breaker panel for engine room Engine room / bilge blower (port & stbd. ER system w/fan control boxes) 1 ONAN 40kw generator 2 ONAN 20kw generators Cruisair control panel for tempered water system 8 Section electrical panels 2 AGF battery chargers Circuit breaker panel for garage electrical equipment Glendenning dockside electrical cable retrieval system Control panel for davits, swim ladder, transom Dockside switch Bilge valving control panel Steering pump panel 2 Large transformers

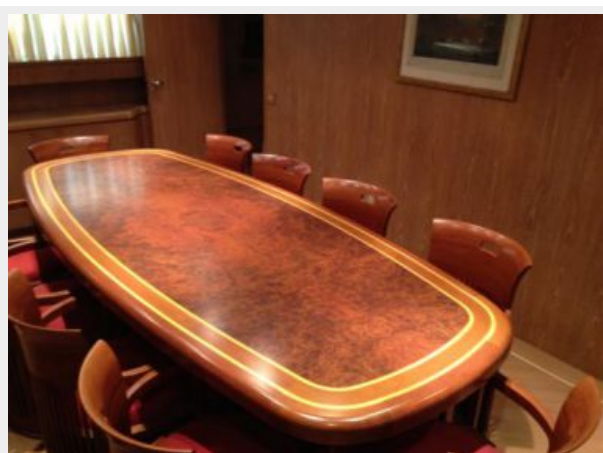
## Exclusions

Owner's personal belongings.

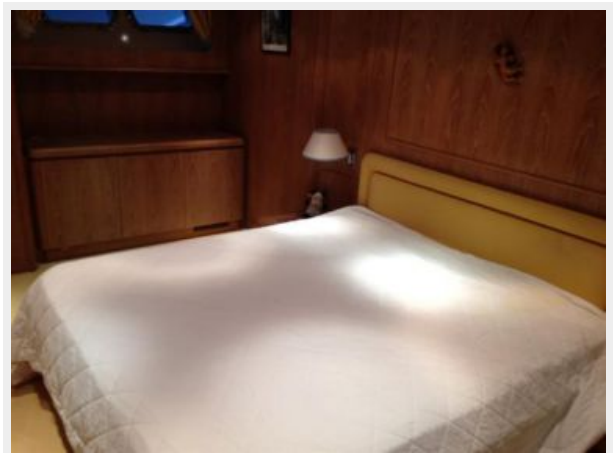
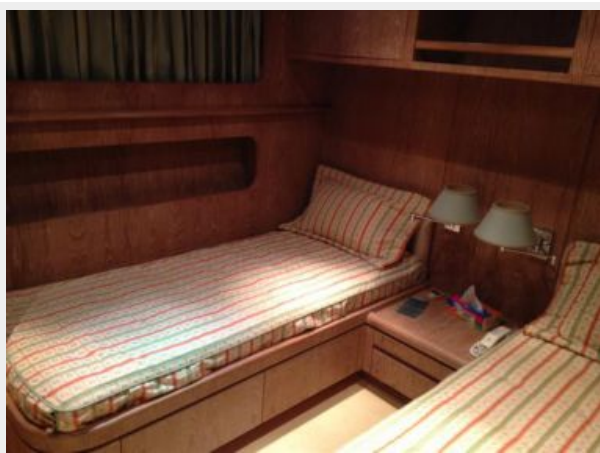
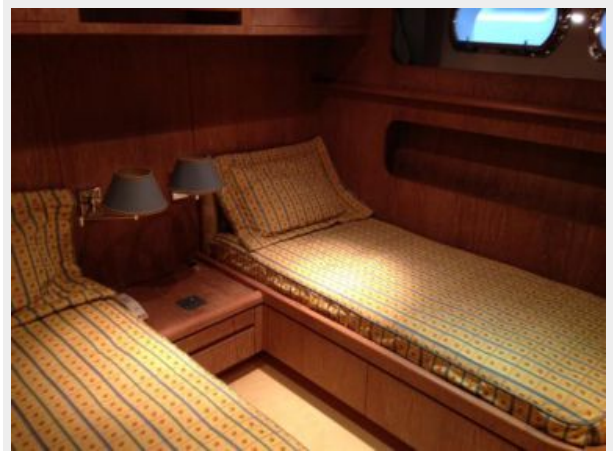
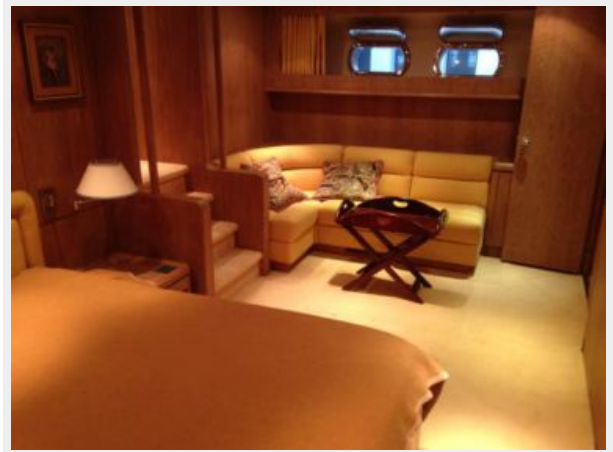
## Disclaimer

The Company offers the details of this vessel or yacht in good faith but cannot guarantee or warrant the accuracy of this information nor warrant the condition of the vessel. A buyer should instruct his representatives, agents, or his surveyors, to investigate such details as the buyer desires validated. This vessel or yacht is offered subject to prior sale, price change, or withdrawal without notice.

# PHOTOS











# CONTACTS

---

Andrey Shestakov, leading yacht broker of the sales department of Shestakov Yacht Sales Inc. Shestakov Yacht Sales Inc., the official representative of the Miami/Fort Lauderdale FL headquarters.

## Contact details

---

Email: [andrey@shestakovyachtsales.com](mailto:andrey@shestakovyachtsales.com)

Web: [shestakovyachtsales.com/en/](http://shestakovyachtsales.com/en/)

## Telephones

---

USA: +1(954)274-4435

## Office hours

---

Monday – Saturday: **9:00 - 21:00** EDT

Sunday: **closed**

## Address

---



Harbour Towne Marina, 850 NE 3rd St,  
STE 213, Dania, FL 33004