

ROMEA — ABEKING & RASMUSSEN



Builder: ABEKING & RASMUSSEN

Year Built: 2015

Model: Mega Yacht

Price: PRICE ON APPLICATION

Location: Monaco

LOA: 268' 5" (81.80m)

Beam: 41' 5" (12.60m)

Max Draft: 11' 4" (3.45m)

Cruise Speed: 14 Kts. (16 MPH)

Max Speed: 17 Kts. (20 MPH)

Our experienced yacht broker, Andrey Shestakov, will help you choose and buy a yacht that best suits your needs **RoMEA — ABEKING & RASMUSSEN** from our catalogue. Presently, at Shestakov Yacht Sales Inc., we have a wide variety of yachts available on our sale's list. We also work in close contact with all the big yacht manufacturers from all over the world.

If you would like to buy a yacht **RoMEA — ABEKING & RASMUSSEN** or would like help answering any questions concerning purchasing, selling or chartering a yacht, please call **+1(954)274-4435**

TABLE OF CONTENTS

TABLE OF CONTENTS	2
SPECIFICATIONS	3
Overview	3
Basic Information	3
Dimensions	4
Speed, Capacities and Weight	4
Accommodations	4
Hull and Deck Information	4
Engine Information	4
PHOTOS	5
RoMEA - VIP cabin	5
RoMEA - Upper deck salon	5
RoMEA - Water sports	5
RoMEA - Beach club	5
RoMEA - Spa	5
CONTACTS	6
Contact details	6
Telephones	6
Office hours	6
Address	6

SPECIFICATIONS

Overview

IMPERIAL introduces RoMEA, brand new 81.8m mega yacht completed in collaboration with the German shipyard ABEKING & RASMUSSEN, exclusively for sale through our services. The call of the sea is as old as mankind : this irresistible pull has led the most brilliant engineering minds to create better and better vessels and seafaring technologies. These compelling energies and the pure joy of the sea are nowhere more intense, more exhilarating than on an exclusive, state-of-the-art megayacht such as RoMEA.

Designed by the sought-after architect Terence Disdale, RoMEA invites you to enter a world of unsurpassed luxury, entertainment and fascination. Her stately lines evoke the majestic power and grace of a vessel that is equally at home swiftly cruising far out at sea or calmly navigating fjords, inlets and fashionable ports. Step on board and you will be transported to a new level of aesthetic refinement and yachting pleasure. Pool, sundecks, observation decks and al fresco dining, as well as tenders and a fully array of watersports, spa facility and equipments, RoMEA boasts the best to seduce her guests. Unveiled for the very first time during the Monaco Yacht Show 2015, RoMEA has surpassed all the limits by offering the ultimate super yacht experience.

Her interiors, also the work of the highly experienced Terence Disdale, offers different spaces for every mood and activity – from grand salons, elegant lounges and multimedia entertainment areas. All these spaces share an exquisite sense of balance and design purity, and bespoke furnishings or unique works of art round off this magnificent picture. From the magnificent Owner suite with private sun deck, additional cabin for children and office, to the 6 staterooms on the Main Deck, running through the magnificent two salons and the huge Cinema, or the relaxing Spa area and the Beach club, RoMEA looks like no other vessel : her exclusivity, her luxurious amenities and the high\$end finishing are making all the differences. She offers a yachting experience second to none...

Basic Information

Category: Mega Yacht

Model Year: 2015

Year Built: 2015

Country: Monaco

Fly Bridge: Yes

Cockpit: Yes

Dimensions

LOA: 268' 5" (81.80m)**LWL:** 242' 8" (73.94m)**Beam:** 41' 5" (12.60m)**Max Draft:** 11' 4" (3.45m)

Speed, Capacities and Weight

Cruise Speed: 14 Kts. (16 MPH)**Cruise Speed Range:** 5750**Max Speed:** 17 Kts. (20 MPH)**Gross Tonnage:** 2312 Pounds**Water Capacity:** 60000 Gallons**Fuel Capacity:** 210000 Gallons

Accommodations

Total Cabins: 7**Total Berths:** 16**Captain Cabin:** True**Crew Berths:** 23

Hull and Deck Information

Hull Material: Steel**Deck Material:** Teak**Hull Configuration:** Displacement w/
Bulbous Bow**Hull Color:** White**Hull Designer:** Abeking & Rasmussen**Exterior Designer:** Terence Disdale**Interior Designer:** Terence Disdale

Engine Information

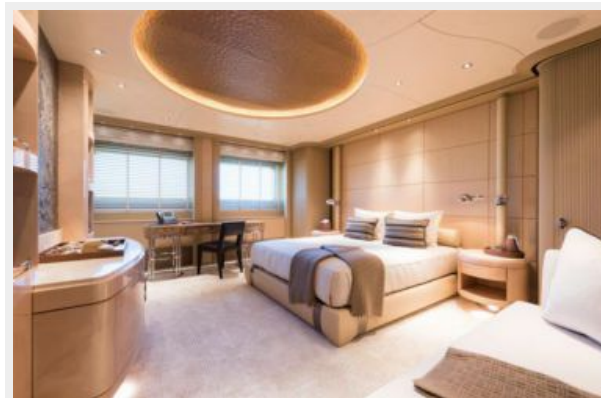
Engines: 2**Manufacturer:** CAT**Model:** 3516C**Engine Type:** Inboard**Fuel Type:** Diesel

PHOTOS

RoMEA - Upper deck salon



RoMEA - VIP cabin



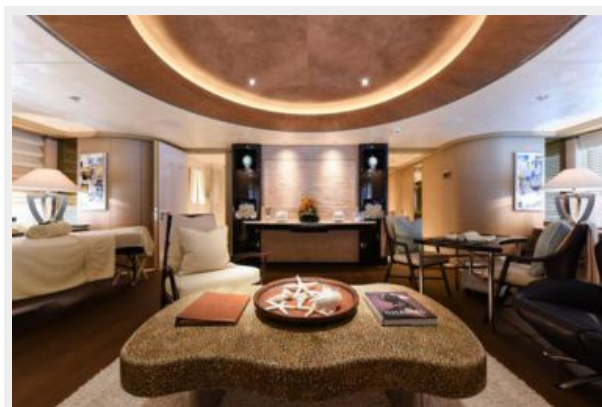
RoMEA - Water sports



RoMEA - Beach club



RoMEA - Spa



CONTACTS

Andrey Shestakov, leading yacht broker of the sales department of Shestakov Yacht Sales Inc. Shestakov Yacht Sales Inc., the official representative of the Miami/Fort Lauderdale FL headquarters.

Contact details

Email: andrey@shestakovyachtsales.com

Web: shestakovyachtsales.com/en/

Telephones

USA: +1(954)274-4435

Office hours

Monday – Saturday: **9:00 - 21:00** EDT

Sunday: **closed**

Address



Harbour Towne Marina, 850 NE 3rd St,
STE 213, Dania, FL 33004