

QUICK STEP — SABRE YACHTS



Builder: SABRE YACHTS

LOA: 42' 0" (12.80m)

Year Built: 2013

Beam: 14' 0" (4.27m)

Model: Cruiser

Min Draft: 3' 4" (1.02m)

Price: PRICE ON APPLICATION

Location: United States

Our experienced yacht broker, Andrey Shestakov, will help you choose and buy a yacht that best suits your needs **Quick Step — SABRE YACHTS** from our catalogue. Presently, at Shestakov Yacht Sales Inc., we have a wide variety of yachts available on our sale's list. We also work in close contact with all the big yacht manufacturers from all over the world.

If you would like to buy a yacht **Quick Step — SABRE YACHTS** or would like help answering any questions concerning purchasing, selling or chartering a yacht, please call **+1(954)274-4435**

TABLE OF CONTENTS

TABLE OF CONTENTS	2
SPECIFICATIONS	3
Overview	3
Basic Information	3
Dimensions	3
Speed, Capacities and Weight	3
Accommodations	4
Hull and Deck Information	4
Engine Information	4
DETAILED INFORMATION	5
Hull	5
Deck	5
Mechanical	5
Electrical Equipment	5
Plumbing	5
Salon/Helm Deck	5
Mid-Level Galley	6
Cabins	6
Electronics	6
Exclusions	7
Disclaimer	7
PHOTOS	8
CONTACTS	26
Contact details	26
Telephones	26
Office hours	26
Address	26

SPECIFICATIONS

Overview

Less noise, better fuel efficiency, increased maneuverability..... many of the things that make a boating experience exceptional.

At Sabre, we consider our owners and potential owners to be valued members of the Sabre Design Team. The Sabre 42 is the result of our understanding that our clients want to enjoy the same levels of personal luxury and comfort that they now expect in their homes and in their automobiles. We have developed a new style, the Salon Express, available with or without a fly bridge, that allows owners to operate from the comfort of the yacht's interior or from the openness of an optional fly bridge. Technology is advancing rapidly and our owners have come to expect that when there is a new technology available, Sabre will employ it in all new designs.

We have dramatically changed the way we build our yachts, as well as the way in which they are propelled. Traditional values such as elegant interiors, fine craftsmanship and great looks remain, as our owners have come to expect, but below the surface things are state-of-the-art.

Basic Information

Category: Cruiser

Sub Category: Downeast

Model Year: 2013

Year Built: 2013

Country: United States

Vessel Top: Hardtop

Dimensions

LOA: 42' 0" (12.80m)

Beam: 14' 0" (4.27m)

Min Draft: 3' 4" (1.02m)

Speed, Capacities and Weight

Water Capacity: 140 Gallons

Holding Tank: 60 Gallons

Fuel Capacity: 380 Gallons

Accommodations

Total Cabins: 2

Total Berths: 2

Total Heads: 1

Hull and Deck Information

Hull Material: Fiberglass

Engine Information

Engines: 2

Manufacturer: Cummins

Model: QSB

Engine Type: Inboard

Fuel Type: Diesel

DETAILED INFORMATION

Hull

Modern planning V-Hull VIP Resin infused laminate SAN Corecell foam coring Knitted bi-axial structural reinforcements Foam/Plywood stringer system Swim platform with under mounted ladder PVC rub rail with stainless steel cap LP painted boot strip Gold cove stripe

Deck

VIP resin infused laminate Molded in anti-skid surfaces Anodized Aluminum framed windows Large diameter stainless steel perimeter rails Herreshoff bow, stern and spring cleats Hawse pipes aft for mooring lines Low profile opening hatches with shades and screens Low profile pilot hatches in hard top Stainless steel anchor roller L-shaped cockpit seating hinged for pod access

Mechanical

Cummins QSB engines @380 hp with Zeus pod drives (approx. 100 hours on each) Cummins Zeus controls and Smartcraft display Joy stick for low speed maneuvers Triple windshield wipers with washers 9Kw gen set in sound shield (159 hours) Reverse cycle heat and air conditioning Zeus auto trim tab system Anchor windlass with rope/chain gipsy

Electrical Equipment

50 Amp 50 foot shore power cord with cord reel Galvanic isolator Illuminated circuit breaker panel opposite galley 120v outlets throughout interior and in engine room Galley and head receptacles are GFI protected (2) Dedicated AGM 31 engine start batteries (2) AGM Group 4D house batteries LED overhead and reading lights 50 Amp 3-bank battery charger Tinned wire used throughout

Plumbing

Single Polyethylene 140usg. water tank 11 usg. stainless steel hot water tank Stainless sink in galley Fresh water flush MSD w/holding tank and macerator Shower stall in head with curved acrylic enclosure Solid surface material and galley and head countertops Marelon sea valves on all below waterline fittings (3) bilge pumps with high water alarms

Salon/Helm Deck

2) Stidd 500N series helm seats Stazo wooden steering wheel Ultraleather wrap on helm/

navigation pod L-settee to port with inlaid, folding salon table Two person settee to starboard with storage under LED television on electric lift Stainless steel aft bulkhead with bi-fold door Drop down windows port and starboard Elegant inlaid main salon table

Mid-Level Galley

Solid surface countertop Stainless steel sink and faucet Convection microwave oven Ceramic two burner cook top Two drawer stainless steel fridge AC/DC Separate freezer compartment Slide out spice locker Storage in galley lockers and below galley sole Opening stainless steel portlight over galley

Cabins

Master stateroom forward with Queen size island berth LED televisions in both cabins Storage below berth and in shelf lockers Dovetailed drawers throughout Hanging lockers with cedar lining Overhead hatches and opening portlights Guest cabin to starboard with pocket door enclosure Optional dinette layout converts to double berth Reverse cycle heat and air conditioning Private access to head compartment from master cabin

Electronics

2 Garmin GPSMAP 5208 8" GPS/Chartplotters
Garmin GMR 18HD 18" RADOME radar
Garmin GM51XM Weather Radar module
Garmin VUS011R Blue Chart Florida west coast
Garmin GC10 Aft deck reverse image marine camera
Garmin AIS 600 Transceiver
Garmin VHS 300 Black Box VHF Radio
Garmin VHF wireless hand held remote
Garmin Black Box Sounder
Garmin bronze thru-hull depth/speed/temp
4 Garmin GM110 Displays
Airmar Smart Depth/temp

Wave WIFI EC-AP-ER

IRIS DVR for recording video

Intellian 12 USHD satellite tv antenna

Intellian empty dome for matching

DirecTV receiver

Glomex air antenna for local channels

Airmar PB200 Annamometer

Xantrex XPower 3000 Inverter

Flat screen TVs in salon; dinette; and master

Shakespeare 5225-XT 6DB Galaxy VHF antnnas

Mercruiser/vessel interface to Garmin

Exclusions

Owner's personal belongings.

Disclaimer

The Company offers the details of this vessel or yacht in good faith but cannot guarantee or warrant the accuracy of this information nor warrant the condition of the vessel. A buyer should instruct his representatives, agents, or his surveyors, to investigate such details as the buyer desires validated. This vessel or yacht is offered subject to prior sale, price change, or withdrawal without notice.

PHOTOS







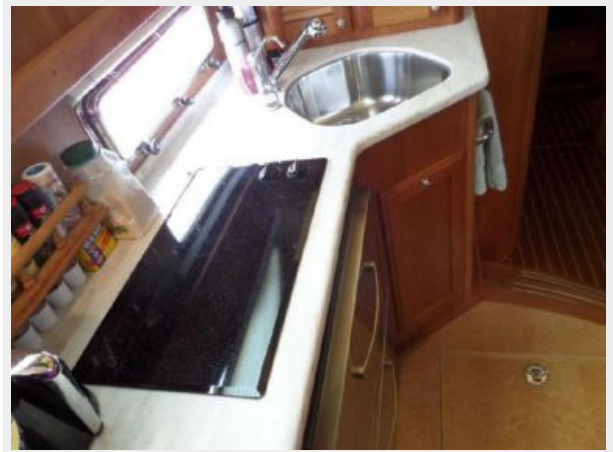




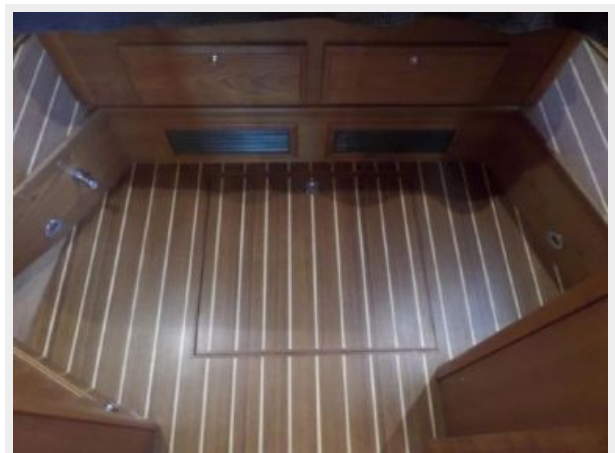
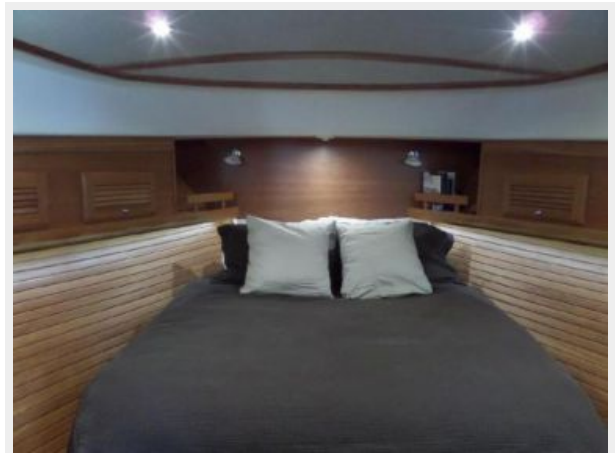


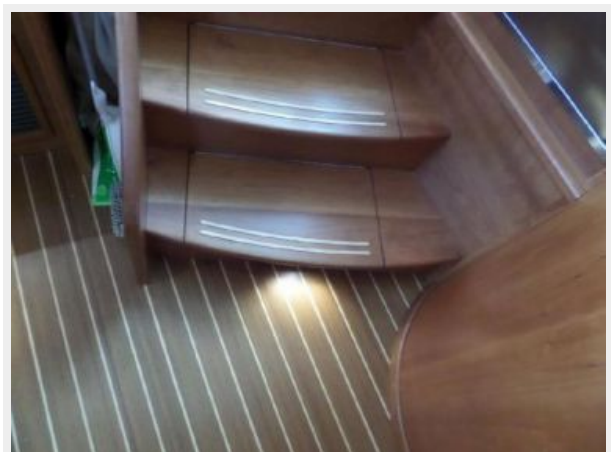




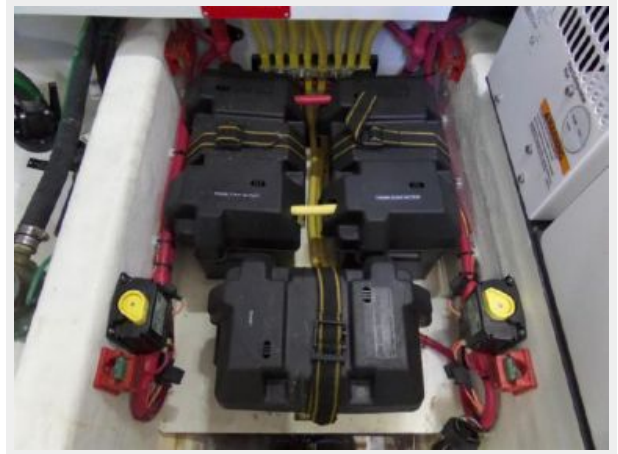


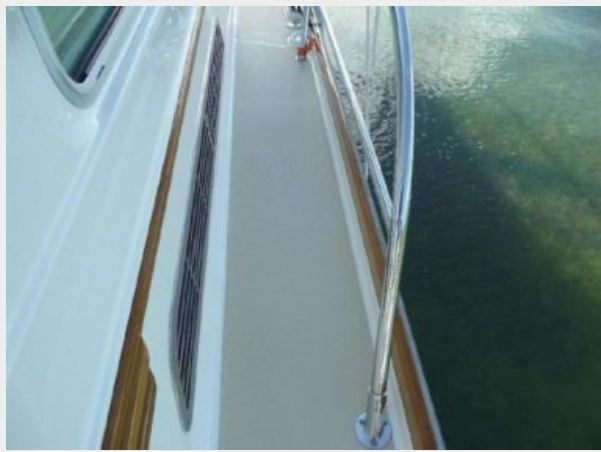


















CONTACTS

Andrey Shestakov, leading yacht broker of the sales department of Shestakov Yacht Sales Inc. Shestakov Yacht Sales Inc., the official representative of the Miami/Fort Lauderdale FL headquarters.

Contact details

Email: andrey@shestakovyachtsales.com

Web: shestakovyachtsales.com/en/

Telephones

USA: +1(954)274-4435

Office hours

Monday – Saturday: **9:00 - 21:00** EDT

Sunday: **closed**

Address



Harbour Towne Marina, 850 NE 3rd St,
STE 213, Dania, FL 33004