

## N/A — HAMPTON YACHTS



**Builder:** [Hampton Yachts](#)

**Year Built:** 2009

**Model:** Motor Yacht

**Price:** PRICE ON APPLICATION

**Location:** United States

**LOA:** 72' 0" (21.95m)

**Beam:** 18' 5" (5.61m)

**Max Draft:** 5' 7" (1.70m)

**Cruise Speed:** 12 Kts. (14 MPH)

**Max Speed:** 16 Kts. (18 MPH)

Our experienced yacht broker, Andrey Shestakov, will help you choose and buy a yacht that best suits your needs **N/A — Hampton Yachts** from our catalogue. Presently, at Shestakov Yacht Sales Inc., we have a wide variety of yachts available on our sale's list. We also work in close contact with all the big yacht manufacturers from all over the world.

If you would like to buy a yacht **N/A — Hampton Yachts** or would like help answering any questions concerning purchasing, selling or chartering a yacht, please call **+1(954)274-4435**

# TABLE OF CONTENTS

|  |    |
|--|----|
| TABLE OF CONTENTS                      | 2  |
| SPECIFICATIONS                         | 5  |
| Overview                               | 5  |
| Basic Information                      | 5  |
| Dimensions                             | 5  |
| Speed, Capacities and Weight           | 5  |
| Accommodations                         | 6  |
| Hull and Deck Information              | 6  |
| Engine Information                     | 6  |
| DETAILED INFORMATION                   | 7  |
| Accommodations, Furnishings and Layout | 7  |
| Galley and Laundry                     | 8  |
| Electronics & Navigation Equipment     | 8  |
| Deck Equipment                         | 8  |
| Electrical System                      | 9  |
| Mechanical Equipment & Engine Details  | 9  |
| Disclaimer                             | 9  |
| Exclusions                             | 9  |
| Disclaimer                             | 10 |
| PHOTOS                                 | 11 |
| Profile                                | 11 |
| Profile                                | 11 |
| Profile                                | 11 |
| Profile                                | 11 |
| Stern view                             | 11 |
| Stern view                             | 11 |
| Saloon                                 | 12 |
| Saloon                                 | 12 |

|                     |    |
|---------------------|----|
| Galley              | 12 |
| Dinette             | 12 |
| Stairs to stateroom | 12 |
| Stateroom           | 12 |
| Stateroom           | 13 |
| Stateroom           | 13 |
| Stateroom           | 13 |
| Head                | 13 |
| Head                | 13 |
| Head                | 13 |
| Twin cabin          | 14 |
| Twin cabin          | 14 |
| Twin cabin          | 14 |
| Twin cabin          | 14 |
| Stern               | 14 |
| Stern               | 14 |
| Stern               | 15 |
| Stern               | 15 |
| Flybridge           | 15 |
| Flybridge           | 15 |
| Flybridge           | 15 |
| Flybridge           | 15 |
| Flybridge           | 16 |
| Flybridge           | 16 |
| Helm station        | 16 |
| Helm station        | 16 |
| Starboard side      | 16 |
| Bow                 | 16 |
| Bow                 | 17 |

---

|                 |    |
|-----------------|----|
| Bow             | 17 |
| Engine room     | 17 |
| Engine room     | 17 |
| Engine room     | 17 |
| Engine room     | 17 |
| Engine room     | 18 |
| CONTACTS        | 19 |
| Contact details | 19 |
| Telephones      | 19 |
| Office hours    | 19 |
| Address         | 19 |

---

# SPECIFICATIONS

---

## Overview

---

New Trade

Open to trade-ins. Financing is available.

The Hampton 72 Motoryacht was designed for owners who are looking for a level of luxury that is not commonly found in its class and size. The Hampton is fitted with top of the line mechanical equipment which combined with a traditional style and modern feel puts this gorgeous motoryacht a class of its own. The interior design features quality soft goods with granite, marble & onyx tops and the satin finished raised panel Makore cherry creates a stunning feel throughout the vessel.

## Basic Information

---

**Category:** Motor Yacht

**Sub Category:** Flybridge

**Model Year:** 2009

**Year Built:** 2009

**Country:** United States

**Fly Bridge:** Yes

## Dimensions

---

**LOA:** 72' 0" (21.95m)

**Beam:** 18' 5" (5.61m)

**Max Draft:** 5' 7" (1.70m)

**MFG Length:** 72' 0" (21.95m)

## Speed, Capacities and Weight

---

**Cruise Speed:** 12 Kts. (14 MPH)

**Max Speed:** 16 Kts. (18 MPH)

**Displacement:** 95200 Pounds

**Water Capacity:** 150 Gallons

**Fuel Capacity:** 1453 Gallons

---

## Accommodations

---

**Total Cabins:** 3

**Total Berths:** 4

**Sleeps:** 6

**Total Heads:** 2

---

## Hull and Deck Information

---

**Hull Material:** Fiberglass

---

## Engine Information

---

**Engines:** 2

**Manufacturer:** Cummins

**Model:** QSM11

**Engine Type:** Inboard

**Fuel Type:** Diesel

---

# DETAILED INFORMATION

---

## Accommodations, Furnishings and Layout

---

- Number of owner & guests that can sleep in staterooms: 6
- Number of owner & guest staterooms on vessel: 3
- Master Stateroom Amidship has head, shower with king
- (2) Guest heads
- (2) Guest showers
- (1) Additional captain & crew Berth
- Separate Captain's Quarters
- (1) Crew shower
- Carpeting
- Drapes

### Master:

- Full beam master
- King size bed
- Walk in closet
- Onyx counter tops
- Teak & holly flooring
- Sharp Aquos LCD TV
- Stereo system
- Custom soft goods
- LED lighting
- Large stall shower

### VIP:

- Queen Bed
- Custom soft goods
- LED Lighting
- Teak & Holy flooring
- Onyx counter tops
- Revana toilet
- large stall shower
- Stereo system

### Guest / Office:

- Upper & Lower bunks
- LED lighting
- Stereo system
- Custom soft goods

---

## Galley and Laundry

---

- Galley is down
- Bosch refrigeratorw/ freezer
- Microwave Oven
- (4) Bosh Stove Burner
- Water Heater
- Sicao wine cooler
- Granite counter tops
- Dual stainless steal sink
- Bosh dishwasher

---

## Electronics & Navigation Equipment

---

- (1) Compass
- Raymarine 24OE VHF (Primary)
- Raymarine 24OE VHF ( Secondary)
- (3) Raymarine E120
- Raymarine GPS
- Raymarine Radar
- Raymarine ST 70 Autopilot
- NEC VOX- LCD monitor
- Raymarine ST70 log/speed/depthsounder
- (2) Cummins smart craft display

---

## Deck Equipment

---

- (1) Anchor
- AXE- PLOW
- Bow Pulpit & Rails
- Cover s & Curtains
- Bimini Top
- Teak
- Coast Guard Approved Safety Package
- Deck wash Down System: Freshwater and Saltwater
- Fenders and Lights
- Navigation Lights
- Single electric Search lights
- Maxwell 3500 electric windlass
- **Vetus bow thruster**



---

## Electrical System

---

- (12) Batteries
- Auto Battery Charger
- Dockside Electrical Cable
- Generator ( Primary) : Onan 21.5 K.W w/ 48 hours
- Generator ( Secondary): Onan 21.5 K.W w/ 65 hours
- Electrical System : 24 V; AC-110V
- Centaur 24 Volts 80 AMP Charger
- Vitron Energy 12 Volts 30 AMP Charger
- Vitron Energy 24 Volts , 5000 VA 120 volts/ Inverter

---

## Mechanical Equipment & Engine Details

---

- Vico Air conditioner, Climma Air
- Vetus bow thrusters
- Engine Alarm
- Emergency engine stop
- Fire extinguishing system: Halon; Auto
- Fresh water cooling system
- Fuel filters
- Fuel shut off valve: engines
- Head type:holding;electric
- Sea star hydraulic steering
- Synchronizers
- Trim tabs
- ZF 300 A transmission
- Sea recovery watermaker
- Dual racor filters
- Sea fire FM-200

---

## Disclaimer

---

The Company offers the details of this vessel in good faith but cannot guarantee or warrant the accuracy of this information nor warrant the condition of the vessel. A buyer should instruct his agents, or his surveyors, to investigate such details as the buyer desires validated. This vessel is offered subject to prior sale, price change, or withdrawal without notice.

---

## Exclusions

---

Owner's personal belongings.

---

## Disclaimer

---

The Company offers the details of this vessel or yacht in good faith but cannot guarantee or warrant the accuracy of this information nor warrant the condition of the vessel. A buyer should instruct his representatives, agents, or his surveyors, to investigate such details as the buyer desires validated. This vessel or yacht is offered subject to prior sale, price change, or withdrawal without notice.

# PHOTOS

**Profile**



**Profile**



**Profile**



**Profile**



**Stern view**



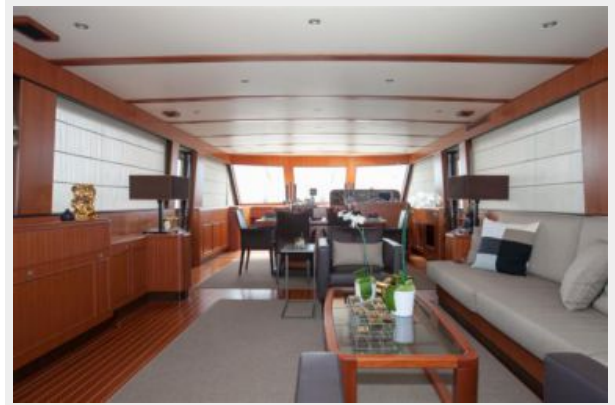
**Stern view**



**Saloon**



**Saloon**



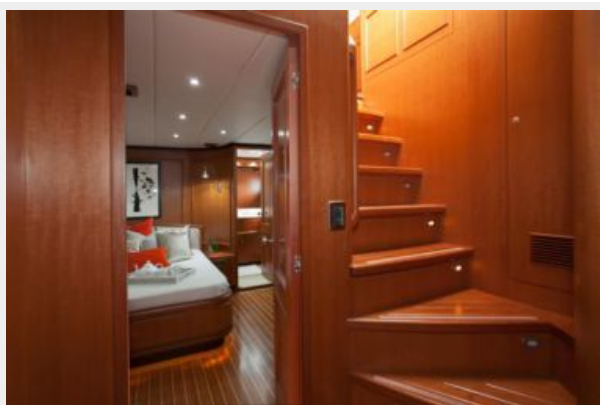
**Galley**



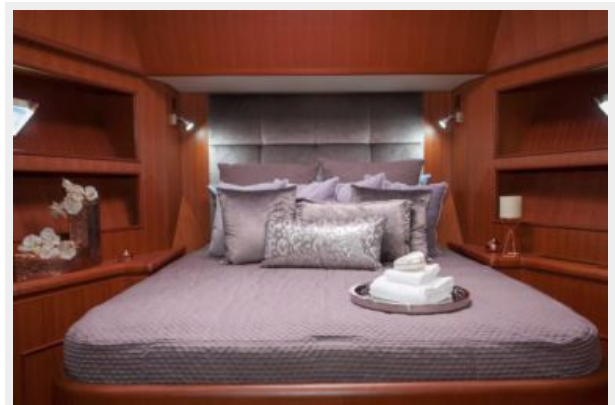
**Dinette**



**Stairs to stateroom**



**Stateroom**



**Stateroom**



**Stateroom**



**Stateroom**



**Head**



**Head**



**Head**



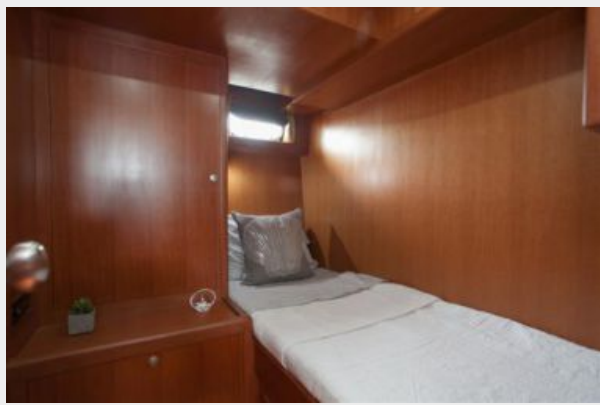
**Twin cabin**



**Twin cabin**



**Twin cabin**



**Twin cabin**



**Stern**



**Stern**



**Stern**



**Stern**



**Flybridge**



**Flybridge**



**Flybridge**



**Flybridge**



**Flybridge**



**Flybridge**



**Helm station**



**Helm station**



**Starboard side**



**Bow**





**Bow**



**Bow**



**Engine room**



**Engine room**



**Engine room**



**Engine room**



## Engine room



# CONTACTS

---

Andrey Shestakov, leading yacht broker of the sales department of Shestakov Yacht Sales Inc. Shestakov Yacht Sales Inc., the official representative of the Miami/Fort Lauderdale FL headquarters.

## Contact details

---

Email: [andrey@shestakovyachtsales.com](mailto:andrey@shestakovyachtsales.com)

Web: [shestakovyachtsales.com/en/](http://shestakovyachtsales.com/en/)

## Telephones

---

USA: +1(954)274-4435

## Office hours

---

Monday – Saturday: **9:00 - 21:00** EDT

Sunday: **closed**

## Address

---



Harbour Towne Marina, 850 NE 3rd St,  
STE 213, Dania, FL 33004