

NERO — SUNSEEKER



Builder: SUNSEEKER

Year Built: 2007

Model: Motor Yacht

Price: PRICE ON APPLICATION

Location: Malta

LOA: 57' 5" (17.50m)

Beam: 16' 4" (4.97m)

Min Draft: 5' 1" (1.54m)

Max Draft: 5' 1" (1.54m)

Max Speed: 31 Kts. (36 MPH)

Our experienced yacht broker, Andrey Shestakov, will help you choose and buy a yacht that best suits your needs **NERO — SUNSEEKER** from our catalogue. Presently, at Shestakov Yacht Sales Inc., we have a wide variety of yachts available on our sale's list. We also work in close contact with all the big yacht manufacturers from all over the world.

If you would like to buy a yacht **NERO — SUNSEEKER** or would like help answering any questions concerning purchasing, selling or chartering a yacht, please call **+1(954)274-4435**

TABLE OF CONTENTS

TABLE OF CONTENTS	2
SPECIFICATIONS	3
Overview	3
Basic Information	3
Dimensions	3
Speed, Capacities and Weight	3
Accommodations	3
Hull and Deck Information	4
Engine Information	4
DETAILED INFORMATION	5
Accommodation	5
Additional	5
Vessel Description	5
Exclusions	6
Disclaimer	6
PHOTOS	7
CONTACTS	10
Contact details	10
Telephones	10
Office hours	10
Address	10

SPECIFICATIONS

Overview

The Predator 62 is the ultimate in style and sophistication that Sunseeker are famous for. Her beautiful lines and spacious interior put her way ahead of the competition in her size. "NERO" boasts a beautiful black hull, black bulwarks and touches of Carbon fibre to give her a striking look. Fully coded, this boat makes a great charter vessel for day (10 guests) and weekend charters (6 guests) in the Med. Fully managed and maintained by the Sunseeker team in Malta, this boat comes with a service history and has been fully refurbished in 2015 with new external upholstery, teak treatment, servicing, new anodes, and basically a new crew cabin to name but a few. Viewings highly recommended. She is ready to go! Please contact for more information.

Basic Information

Category: Motor Yacht

Model Year: 2007

Year Built: 2007

Country: Malta

Vessel Top: Hardtop

Dimensions

LOA: 57' 5" (17.50m)

Beam: 16' 4" (4.97m)

Min Draft: 5' 1" (1.54m)

Max Draft: 5' 1" (1.54m)

Speed, Capacities and Weight

Max Speed: 31 Kts. (36 MPH)

Displacement: 63934.05598 Pounds

Water Capacity: 184.9204364 Gallons

Fuel Capacity: 792.516156 Gallons

Accommodations

Total Berths: 6

Crew Berths: 1

Hull and Deck Information

Hull Material: GRP

Hull Color: Black Hull

Engine Information

Engines: 2

Manufacturer: MAN

Model: 1100 CRM

Fuel Type: Diesel

DETAILED INFORMATION

Accommodation

"NERO" features 3 Cabins to sleep 6 guests. Comprising of a full beam Master Cabin, an ensuite forward VIP Cabin and a starboard Guest Cabin. The lower Saloon provides a relaxed, entertaining area that guests can enjoy next to the Galley. The upper Saloon is spacious enough to accommodate all guests with direct access to the aft Cockpit.

Additional

4-blade bronze propeller semintubate Access to the cockpit with sliding doors in stainless steel According Dome Seatel Air conditioning in all cabins, dinette, cabin crew reversible heating with thermostats Aqualuma Underwater Lights LED white (x 4) Automatic bilge pumps Automatic fire extinguishers Autopilot Bathing platform and steps Teak Batteries 8 Boiler 220 + engine Bow sunbathing cushions Bow Thruster - Lewmar 250TT8 - 10.7 HP Capacity 1200 Capacity 3000 liters CD player in the cockpit Ceramic Hob Chain extra 30 meters - 10mm Charge batt. Cockpit cushions replaced in 2012 Courtesy lights at the level of the floor Courtesy lights with white LED low (8 per side) Crew cabin refit 2015 Electric Electric opening window in the wheelhouse deck saloon Electric refrigerator and freezer Electric winch with deck and cockpit Equipment Filter purifier for ice maker with replacement cartridge Flat screen television in all cabins Fresh-water dock Gen. 220 KOHLER Power 13.0Kw Hard Top Hi-fi DVD / CD surround system Hull wrapping on bulwarks and radar domes in Black 2015 Hydraulic lifting platform Hydraulic power steering Increased 13 kw generator. at low speed with silent exhaust Information V DRIVE Inverter Material Stainless Steel Microwave / grill Model D2840LE423 New external cushion upholstery 2015 New glass surfaces on cupboards in the saloon Radar Radar, autopilot, electronic speedometer log, echo sounder and VHF radio Raymarine Auto Pilot Raymarine 240E VHF DSC Class D Raymarine CAM 100 camera aft Raymarine G120 12" display with 4 Ft scanner and AIS receiver Raymarine G120 additional display Raymarine ST70 Display Rear Facing Room and Engine Room Remote control system for boat operation away from helm Replaced engine room insulation 2015 Safe to closing the digital cabin Saloon 32" TV on Rise and Fall Shower bathroom with hot and cold water SRV43 GB Slimline Dishwasher Bosch in the kitchen System warm and cold The AC shorepower / battery charger Transmission line axis Trimtabs Underwater lights fitted 2015 Vacuum toilets with holding tank Voltage 12/24/220 Washer / dryer below steps down Wet bar with ice maker, grill, icebox and sink with hot and cold water

Vessel Description

The Predator 62 is the ultimate in style and sophistication that Sunseeker are famous for. Her beautiful lines and spacious interior put her way ahead of the competition in her size. "NERO" boasts a beautiful black hull, black bulwarks and touches of Carbon fibre to give her a striking

look. Fully coded, this boat makes a great charter vessel for day (10 guests) and weekend charters (6 guests) in the Med. Fully managed and maintained by the Sunseeker team in Malta, this boat comes with a service history and has been fully refurbished in 2015 with new external upholstery, teak treatment, servicing, new anodes, and basically a new crew cabin to name but a few. Viewings highly recommended. She is ready to go! Please contact for more information.

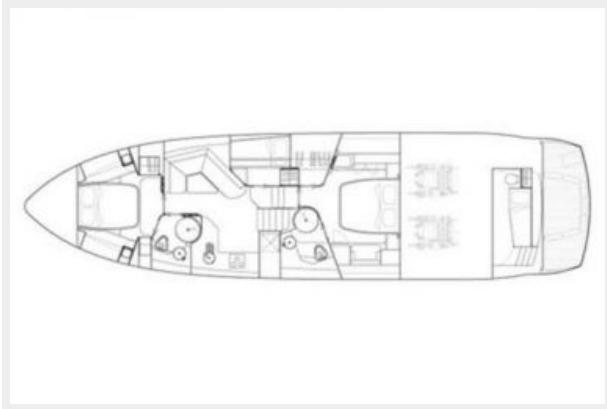
Exclusions

Owner's personal belongings.

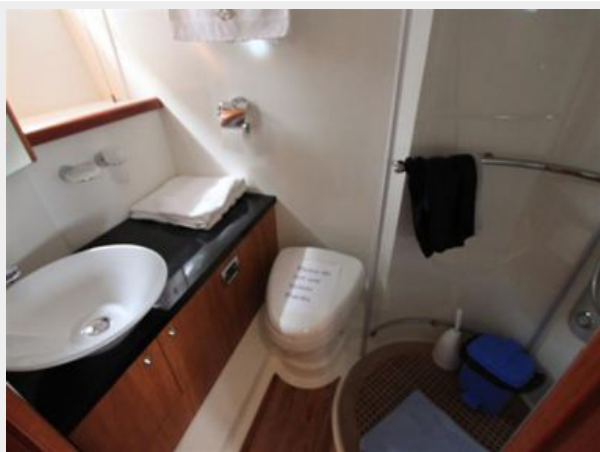
Disclaimer

The Company offers the details of this vessel or yacht in good faith but cannot guarantee or warrant the accuracy of this information nor warrant the condition of the vessel. A buyer should instruct his representatives, agents, or his surveyors, to investigate such details as the buyer desires validated. This vessel or yacht is offered subject to prior sale, price change, or withdrawal without notice.

PHOTOS







CONTACTS

Andrey Shestakov, leading yacht broker of the sales department of Shestakov Yacht Sales Inc. Shestakov Yacht Sales Inc., the official representative of the Miami/Fort Lauderdale FL headquarters.

Contact details

Email: andrey@shestakovyachtsales.com

Web: shestakovyachtsales.com/en/

Telephones

USA: +1(954)274-4435

Office hours

Monday – Saturday: **9:00 - 21:00** EDT

Sunday: **closed**

Address



Harbour Towne Marina, 850 NE 3rd St,
STE 213, Dania, FL 33004