

PALADIN — GRAND ALASKAN



Builder: GRAND ALASKAN

Year Built: 2000

Model: Motor Yacht

Price: PRICE ON APPLICATION

Location: United States

LOA: 60' 0" (18.29m)

Beam: 17' 6" (5.33m)

Max Draft: 4' 9" (1.45m)

Cruise Speed: 15 Kts. (17 MPH)

Max Speed: 18 Kts. (21 MPH)

Our experienced yacht broker, Andrey Shestakov, will help you choose and buy a yacht that best suits your needs **Paladin — GRAND ALASKAN** from our catalogue. Presently, at Shestakov Yacht Sales Inc., we have a wide variety of yachts available on our sale's list. We also work in close contact with all the big yacht manufacturers from all over the world.

If you would like to buy a yacht **Paladin — GRAND ALASKAN** or would like help answering any questions concerning purchasing, selling or chartering a yacht, please call **+1(954)274-4435**

TABLE OF CONTENTS

TABLE OF CONTENTS	2
SPECIFICATIONS	4
Overview	4
Basic Information	4
Dimensions	4
Speed, Capacities and Weight	4
Accommodations	4
Hull and Deck Information	5
Engine Information	5
DETAILED INFORMATION	6
Electronics	6
Inside Equipment	6
Electrical Equipment	6
Outside Equipment/Extras	6
Layout	6
Salon	7
Galley	7
Master Stateroom	8
VIP Stateroom	8
Guest Stateroom	9
Pilothouse	9
Flybridge	10
Engine & Mechanical	10
Deck Equipment	12
Exclusions	12
Disclaimer	13
PHOTOS	14
CONTACTS	28

Contact details	28
Telephones	28
Office hours	28
Address	28

SPECIFICATIONS

Overview

Grand Alaskans were constructed on a modern semi-displacement fiberglass hull (designed by Arthur Deferrer) with cored hullsides, a prop-protecting keel, hard chines, and a fully integrated swim platform. The three-stateroom floorplan includes the owner's suite amidships with the galley location (forward in the salon) is common in pilothouse designs. Additional features include a spacious engine room with near-standing headroom, stabilizers, lifting davit, bow and stern bow thrusters, cockpit storage lazarette, and protected side decks.

Basic Information

Category: Motor Yacht

Sub Category: Pilothouse

Model Year: 2000

Year Built: 2000

Country: United States

Dimensions

LOA: 60' 0" (18.29m)

Beam: 17' 6" (5.33m)

Max Draft: 4' 9" (1.45m)

Speed, Capacities and Weight

Cruise Speed: 15 Kts. (17 MPH)

Max Speed: 18 Kts. (21 MPH)

Water Capacity: 350 Gallons

Holding Tank: 100 Gallons

Fuel Capacity: 1500 Gallons

Accommodations

Total Cabins: 3

Total Berths: 4

Total Heads: 2

Hull and Deck Information

Hull Material: Fiberglass

Engine Information

Engines: 2

Manufacturer: Caterpillar

Model: 3196 TA

Engine Type: Inboard

Fuel Type: Diesel

DETAILED INFORMATION

Electronics

VHF - Icom M-127 Compass - Richie Offshore Autopilot - Simrad GPS - Northstar and Furuno 32
Wind speed and direction TV set Plotter Depthsounder Radar Navigation center Repeater(s)

Inside Equipment

Electric bilge pump Air compressor Deep freezer Battery charger Fresh water maker - 800 GPD
Oven Marine head - Sealand Vacu-flush Bow thruster - Wesmar - Electric Hot water Manual bilge
pump Air conditioning - Cruise Air Reverse Cycle Sea water pump Heating - Webasto Diesel
Hydronic Furnace Dishwasher Washing machine - Frontloading Washer/Dryer Microwave oven
Refrigerator Stern thruster - Lewmar - Electric

Electrical Equipment

Inverter Shore power inlet - Glendinning and Manual FWD Generator

Outside Equipment/Extras

Swimming ladder Liferaft - Winslow 6-man liferaft Tender - 14' Rendova w 50HP Yamaha 4
stroke Teak cockpit Davits - 1500lb Nautical Structures Cockpit shower Teak sidedecks Electric
windlass Bimini Top - Bimini Top with Strata-glass

Layout

Powered by Twin 660 Cats with only 1470 hours. Twin generators, watermaker, 14' Rendova
tender, Naiad Stabilized, SAT TV. PALADIN is hull no.11 of the successful 60-64' Grand Alaskan
Pilothouse series. A large aft deck with built in seat, leads aft to an integrated swim platform,
which was extended 30" and going forward through double doors to a spacious salon with built
in seating using high end decorator fabric, built in entertainment center, other seating and end
tables and high/low seating . The galley adjoins the salon, and is fully equipped with stainless
appliances, corian-counter tops, pantry..The forward companionway leads to the master with full
queen-size berth, large hanging locker, en-suite head, additional hanging locker, drawers,
storage, and of course, stereo and color television. There is access in the master to enter the
engine room or just observe it through a viewing port in the water tight door, which also has a
teak door to disguise this access. The engine room can also be accessed from a hatch on the aft
deck, which leads to the lazarette, and water tight door to the engine room. From the galley
going forward up three steps is a very spacious pilothouse with built in L-shaped seating, Stidd
chair, port and starboard door, excellent storage, and then a staircase leads to a huge flybridge

with two Stidd helm seats, L-shaped seating and tables built in BBQ, icemaker, open area for casual dining or sunning, and separate area for the 14' dinghy and davit. The flybridge is completely enclosed with Barrett Systems. Moving forward and down from the pilothouse are the three staterooms. The forward stateroom has a walk-around queen berth and to port is an upper and lower berth stateroom. There is access to a large head directly from the VIP Queen berth stateroom forward and from a separate door from the hallway for the port side guest cabin. Note that this area has exceptional head room and volume, because of the freeboard of the hull of the 60' Grand Alaskan Series. PALADIN has full covered walk-around decks with Bulwarks and a Portuguese bridge, so she is excellent for safety for adults or children, and the foredeck has a comfortable built-in seat.

Salon

Enter through double doors to a spacious salon with built-in seating using high-end decorator fabric, built-in entertainment center, other seating, end tables and high/low seating

- Air Conditioning - CruiseAir
- L-shaped Custom Made Sofa
- Hi-Lo table
- Carpeting
- Custom Made Barrel Chair

- Stereo System with Bose Speakers throughout
- Television
- CD Player
- Recessed Halogen Lighting
- Indirect Lighting
- Ample Storage
- Built-in Entertainment Center

Galley

Enter through double doors to a spacious salon with built-in seating using high-end decorator fabric, built-in entertainment center, other seating, end tables and high/low seating

- Air Conditioning - CruiseAir
- L-shaped Custom Made Sofa
- Hi-Lo table
- Carpeting
- Custom Made Barrel Chair

- Stereo System with Bose Speakers throughout
- Television

- CD Player
- Recessed Halogen Lighting
- Indirect Lighting
- Ample Storage
- Built-in Entertainment Center

Master Stateroom

Moving forward and down from the pilothouse are three staterooms. The forward stateroom has a walk around queen berth and to port is an upper and lower berth stateroom. There is access to a large head directly from the Queen berth stateroom forward and from a separate door from the hallway for the port side guest cabin. Note that this area has exceptional head room and volume because of the freeboard of the hull of the 60' Grand Alaskan Series.

- Queen Berth - Center Line
- Ample Storage
- Jacuzzi tub and shower
- Sink Located in Master Bath
- Panasonic Television
- Air Conditioning - Cruise Air
- Telephone Outlet

- Clarion CD Player Stereo System
- Night Stands with Reading Lights
- Intercom
- Carpeting
- Hanging Locker
- Built-In Vanity w/Mirror
- Full size Washer/Dryer
- Zoned hydronic heat
- Raytheon Anchor watch and display
- Sealand vacu-flush head

VIP Stateroom

Moving forward and down from the pilothouse are two staterooms. The forward stateroom has a walk around queen berth and to port is an upper and lower berth stateroom. There is access to a large head directly from the VIP Queen berth stateroom forward and from a separate door from the hallway for the port side guest cabin. Note that this area has exceptional head room and volume because of the freeboard of the hull of the 60' Grand Alaskan Series.

- Queen Berth - Center Line
- Ample Storage

- Stall Shower with Seat
- Sink Located in VIP Bath
- Panasonic Television
- Air Conditioning
- Telephone Outlet

- Clarion CD Player Stereo System
- Night Stands with Reading Lights
- Intercom
- Carpeting
- Hanging Locker
- Built-In Vanity w/Mirror
- Sealand vacu-flush head

Guest Stateroom

- Upper and Lower Berth w/Storage
- Panasonic Television
- Air Conditioning
- Intercom

- Carpeting
- Hanging Locker
- Port Lights with Duette Shade

Pilothouse

From the galley going forward up three steps is a very spacious pilothouse with built-in L-shaped seating, Stidd chair, port and starboard door, excellent storage and then a staircase leads to the flybridge.

- Sea 156 VHF Radio
- Nobeltec Visual Navigation Suite 9-Chart Plotter
- Danforth Constellation Compass
- Furuno Plus Depth Display Depthsounder
- Epirb ACR 406 Cat
- Furuno Navtex Receiver MX500 GPS

- ACR Remote Controlled Searchlight
- Simrad Radar and Nobletec Navigation Visual Suite 9 w/Flybridge remote (**new 2005**)
- Furuno GPS 32 (**new 2007**)
- KVH M-5 Satellite TV Antenna (**new 2007**)
- House/Service Batteries 24 x 6V Golf Cart batteries (**new 2007**)

- Furuno Color Echo Sounder Fish Finder
- Panasonic 8 Ext Speaker Telephone
- Interphase Color Twin scope Forward looking sonar (**new 2014**)
- Big Bay Monitor in Pilothouse (**new 2004**)
- Furuno Weather-fax 30 (**new 2005**)
- Cellular phone Booster (**new 2005**)
- Milteck Marine AIS receiver (**new 2008**)
- Broadband WiFi Modem 33dBm with long range antenna (**new 2009**)
- Stern and Engineroom cameras
- 8 station Intercom
- Icom loud hailer
- Teak and Holly flooring

Flybridge

A staircase leads to a huge flybridge with two Stidd helm seats, L-shaped seating and table, built-in BBQ, icemaker, refrigerator, open area for casual dining or sunning and separate area for the 14' dinghy and davit

- Wet Bar
- Refrigerator
- JennAir BBQ
- U-Line Ice Maker
- Large Storage Dock Box
- Nautical Structures 1500 lb Dinghy Davit-Low Profile
- AM/FM CD Player w/Radio
- L-shaped Settee/Storage
- Stidd Admiral Helm Seats (2)
- Triple Kahlengberg Air Horn W/Danforth Constellation Compressor
- 14' Rendova Tender w/50 hp 4 Stroke Yamaha (**new in 2003**)
- Barrett Flybridge Enclosure

Engine & Mechanical

There is access in the master stateroom to enter the engine room or just observe it through a viewing port in the water tight door which also has a teak door to disguise this access. The engine room can also be accessed from a hatch on the aft deck which leads to the lazarette and water tight door to the engine room.

- Twin 1999 Caterpillar 3196TA-x 660 hp Diesels
- 8KW Northern Lights 1390HRS
- 16KW Northern Lights Generator 1420HRS- Fuel lift pump replaced **2014**

- 16,000 BTU SMX Reverse Cycle Air Conditioning
- Glendinning Electronic Pilothouse Engine Controls w/Manual Backup
- Fresh Water Cooling System
- Oil Transfer System
- Spare Set of Propellers
- Raw Water Sea Strainers
- Naiad Stabilizers (**new seals 2011**)
- Pilothouse Wheel Steering
- Glendinning Engine Synchronizers
- Fuel Transfer Pump
- PAR Pressure Water Pump (fresh water)
- Water Tank Level Gauge (Tank Tender)
- Tankwatch III IB 19771 Holding Tank
- Engine Temperature Alarm

- Oil Pressure Alarm
- Bilge Blower
- Engine Hour Meters
- Racor Fuel Filter
- Fuel Shut Off Valve
- Engine Room Light (12V & 110V)
- Bilge Pumps
- Engine Room - Start/Stop Switch
- (4) Fuel Tanks/1500 gal. Capacity
- High Water Alarm
- Oil Temperature Alarm
- Water Temperature Alarm
- Fire Boy Fire Extinguisher
- Newmar 24V 40Amp Charger for engine start batteries (**new 2004**)
- Newmar 12V Charger (**New 2004**)
- 2 x 2 8D Engine Start Batteries (**new 2014**)
- 24 x 6V Batteries (**new 2014**) Total of 5500 Amp hours @12V
- Wesmar 48V Bow Thruster 23HP with Battery Charger (**New 2004**)
- Bow Thruster batteries 4 x 12V (**new 2015**)
- Flaring of bow thruster tunnel (**New 2006**)
- Lewmar Stern Thruster 24V 15HP 3 station (**new 2005**)
- Underwater lights - Stern (**new 2004**)
- Anchor wash-down pump (**new 2004**)
- Swimplatform extension 30" with teak and staple rails (**new 2004**)
- Webasto Diesel Furnace (**refurbished 2006**)
- Magnum Inverter/Charger 2800 watt 12 Volt w/125 Amp Charger (**new 2009**)
- Raw water pump on mains - new impellers (**new 2010**)
- Glendinning Shore Power AFT
- Manual Shore Power FWD with cord

- Electric Guard Bonding System
- Watermaker 800 GPD

Deck Equipment

- Aft Deck Seating
- Winslow Life Raft - Stored Flybridge Seating
- Bruce Anchor-325' Chain
- CQR Anchor-325' Chain
- Raw-water washdown
- Swim Ladder
- Swim Platform 2 gates
- Anchor Hawse Pipes
- Glendinning Remote Helm Control w/50' Cable
- Bow Rail
- Maxwell 3500 Double Capstan Windlass
- Windshield Shades
- Navigation Lights
- Windshield Washer & Wipers
- Anchor Cleat
- Anchor Lines
- Chocks
- Flybridge Cover
- Flag Holder

- Distress Kit
- Side Boarding Gates (4)
- Deck Lights
- Anchor Locker
- Pennant Staff
- Anchor Lights
- Bow Light
- Aft Deck & Engine Room TV Monitors
- Computer with Nobeltec Monitors at Flybridge & Pilothouse for Software & Cameras
- Engine Block Heaters
- Danforth Compass
- Boat was hauled in **2011** and Sea Hawk Anti-fouling applied
- Boat was waxed in **2011** - Boathouse kept

Exclusions

Owner's personal belongings.

Disclaimer

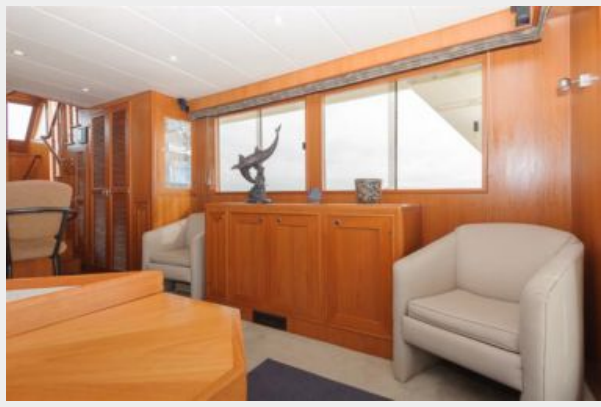
The Company offers the details of this vessel or yacht in good faith but cannot guarantee or warrant the accuracy of this information nor warrant the condition of the vessel. A buyer should instruct his representatives, agents, or his surveyors, to investigate such details as the buyer desires validated. This vessel or yacht is offered subject to prior sale, price change, or withdrawal without notice.

PHOTOS





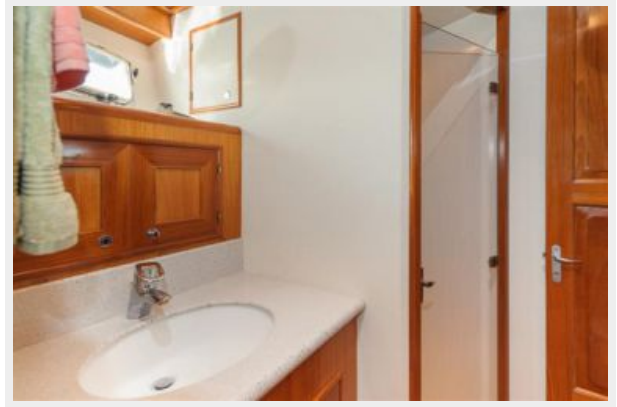








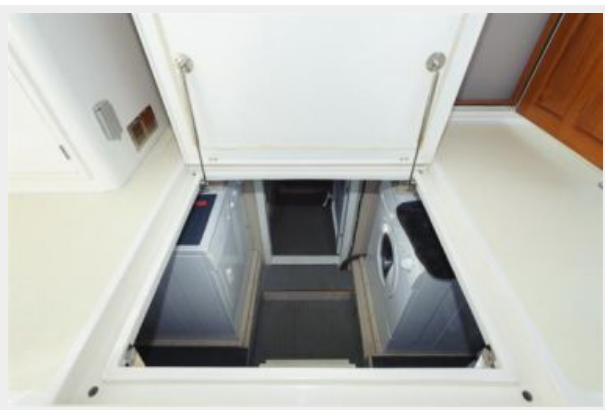




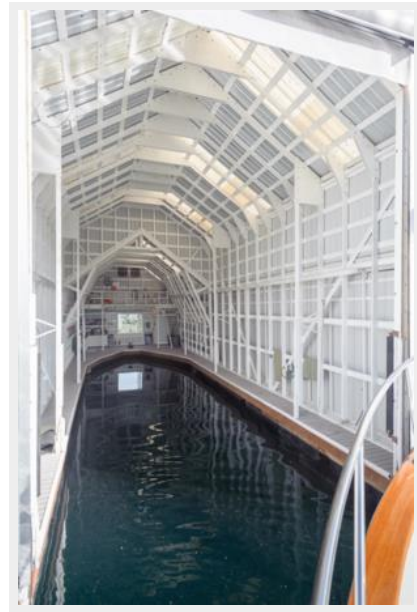












CONTACTS

Andrey Shestakov, leading yacht broker of the sales department of Shestakov Yacht Sales Inc. Shestakov Yacht Sales Inc., the official representative of the Miami/Fort Lauderdale FL headquarters.

Contact details

Email: andrey@shestakovyachtsales.com

Web: shestakovyachtsales.com/en/

Telephones

USA: +1(954)274-4435

Office hours

Monday – Saturday: **9:00 - 21:00** EDT

Sunday: **closed**

Address



Harbour Towne Marina, 850 NE 3rd St,
STE 213, Dania, FL 33004